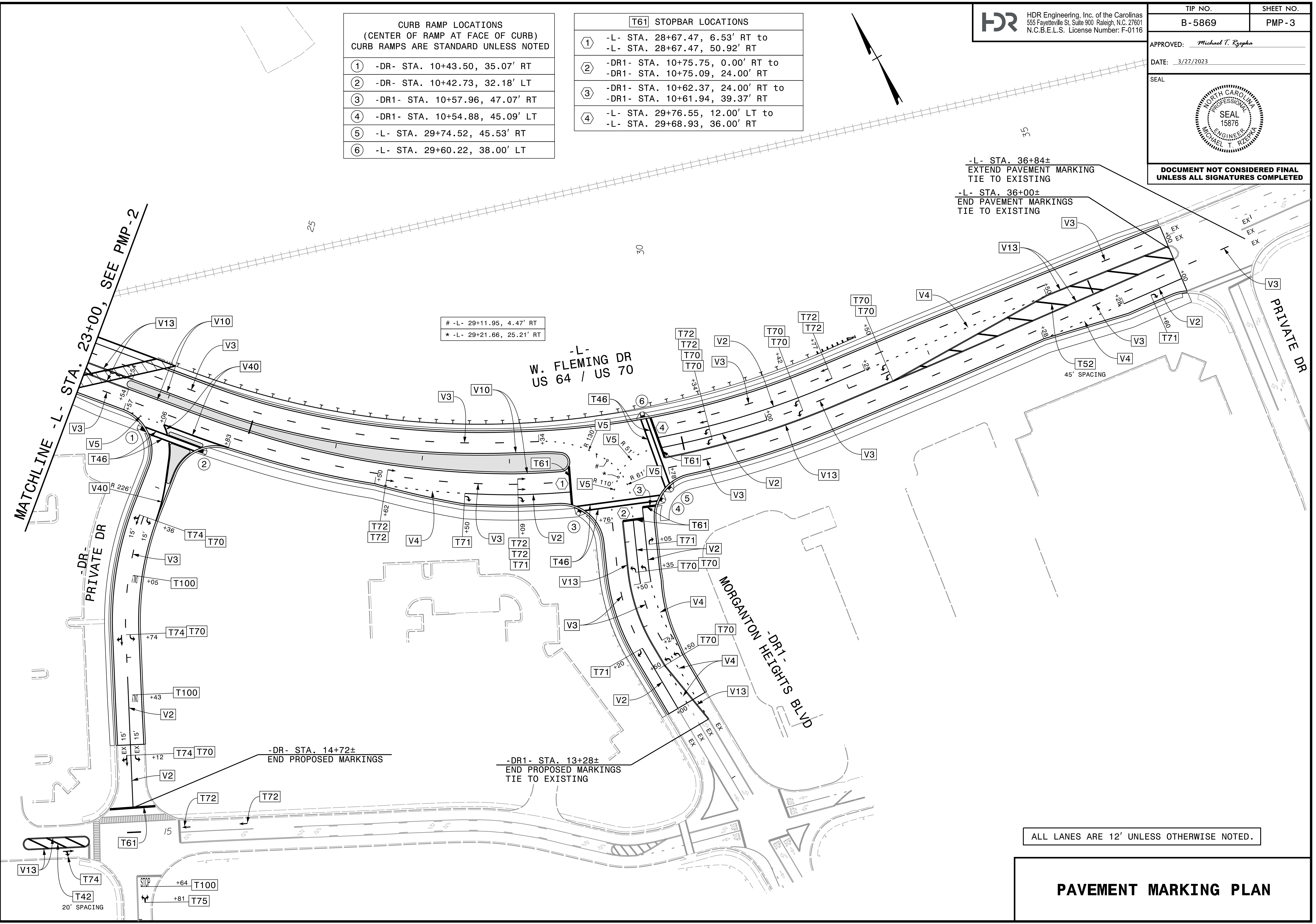
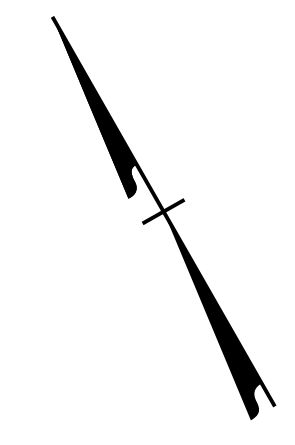


| | |
|--|-----------|
| TIP NO. | SHEET NO. |
| B-5869 | PMP-3 |
| APPROVED: <i>Michael T. Rzepka</i> | |
| DATE: 3/27/2023 | |
| SEAL | |
| | |
| DOCUMENT NOT CONSIDERED FINAL UNLESS ALL SIGNATURES COMPLETED | |

| CURB RAMP LOCATIONS (CENTER OF RAMP AT FACE OF CURB) CURB RAMPS ARE STANDARD UNLESS NOTED | |
|---|--------------------------------|
| ① | -DR- STA. 10+43.50, 35.07' RT |
| ② | -DR- STA. 10+42.73, 32.18' LT |
| ③ | -DR1- STA. 10+57.96, 47.07' RT |
| ④ | -DR1- STA. 10+54.88, 45.09' LT |
| ⑤ | -L- STA. 29+74.52, 45.53' RT |
| ⑥ | -L- STA. 29+60.22, 38.00' LT |

| T61 STOPBAR LOCATIONS | |
|-----------------------|---|
| ① | -L- STA. 28+67.47, 6.53' RT to -L- STA. 28+67.47, 50.92' RT |
| ② | -DR1- STA. 10+75.75, 0.00' RT to -DR1- STA. 10+75.09, 24.00' RT |
| ③ | -DR1- STA. 10+62.37, 24.00' RT to -DR1- STA. 10+61.94, 39.37' RT |
| ④ | -L- STA. 29+76.55, 12.00' LT to -L- STA. 29+68.93, 36.00' RT |



-L- 29+11.95, 4.47' RT
* -L- 29+21.66, 25.21' RT

-L- STA. 36+84±
EXTEND PAVEMENT MARKING
TIE TO EXISTING

-L- STA. 36+00±
END PAVEMENT MARKINGS
TIE TO EXISTING

-DR- STA. 14+72±
END PROPOSED MARKINGS

-DR1- STA. 13+28±
END PROPOSED MARKINGS
TIE TO EXISTING

ALL LANES ARE 12' UNLESS OTHERWISE NOTED.

PAVEMENT MARKING PLAN

PLOT DRIVER: NCDOT_color_eng_50.plt
 USER: CHARNDEN
 FILE: p:\p\h\p\uses\01\HDR_US_East_01\Documents\5705\10121505\6.0_CAD_BIM\6.2_WIP\Division 13\B-5869-Traffic\ Pavement Marking\B5869_PMP\B5869_PMP03.dgn
 PENTABLE: NCDOT_PMP.tbl
 DATE: 3/27/2023
 TIME: 1:30:37 PM