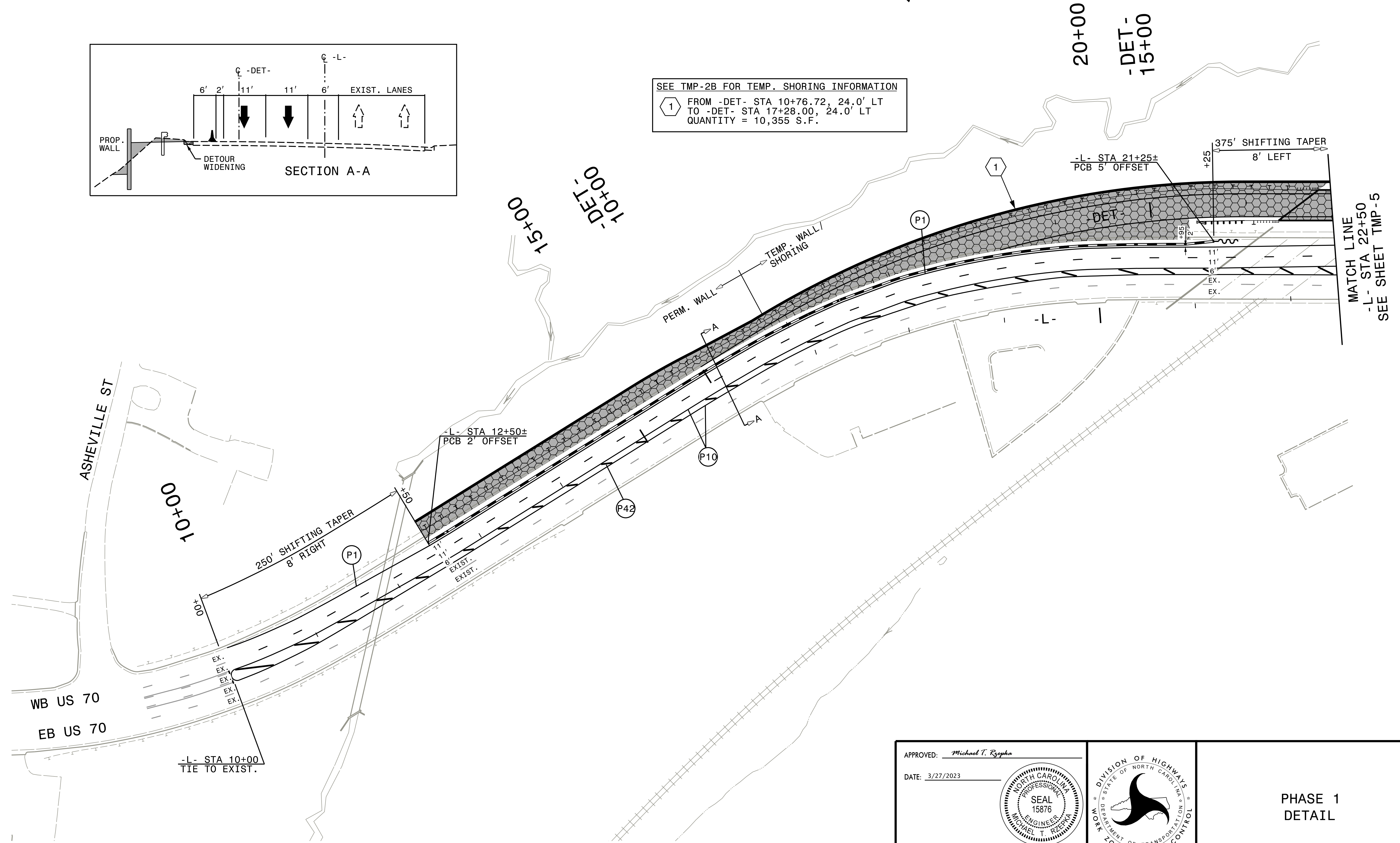


SEE TMP-2B FOR TEMP. SHORING INFORMATION
1 FROM -DET- STA 10+76.72, 24.0' LT
TO -DET- STA 17+28.00, 24.0' LT
QUANTITY = 10,355 S.F.



PLOT DRIVER: NCDOT_pdf_color_eng_50.plt
PENTABLE: NCDOT_tcp.tbl
USER: CHARNDEN
DATE: 1/6/2023
TIME: 3:31:35 PM
FILE: p:\pwhdr\users\01\HDR_US_East\01\Documents\5705\10127505\6.0_CAD_BIM\6.2_WIP\Division 13\B-5869\TrafficControl\TCP\B5869.tmp_04.dtl.dgn

APPROVED: *Michael T. Rzepka*
DATE: 3/27/2023
NORTH CAROLINA
PROFESSIONAL
SEAL
15876
ENGINEER
MICHAEL T. RZEPKA



PHASE 1
DETAIL

DOCUMENT NOT CONSIDERED FINAL
UNLESS ALL SIGNATURES COMPLETED