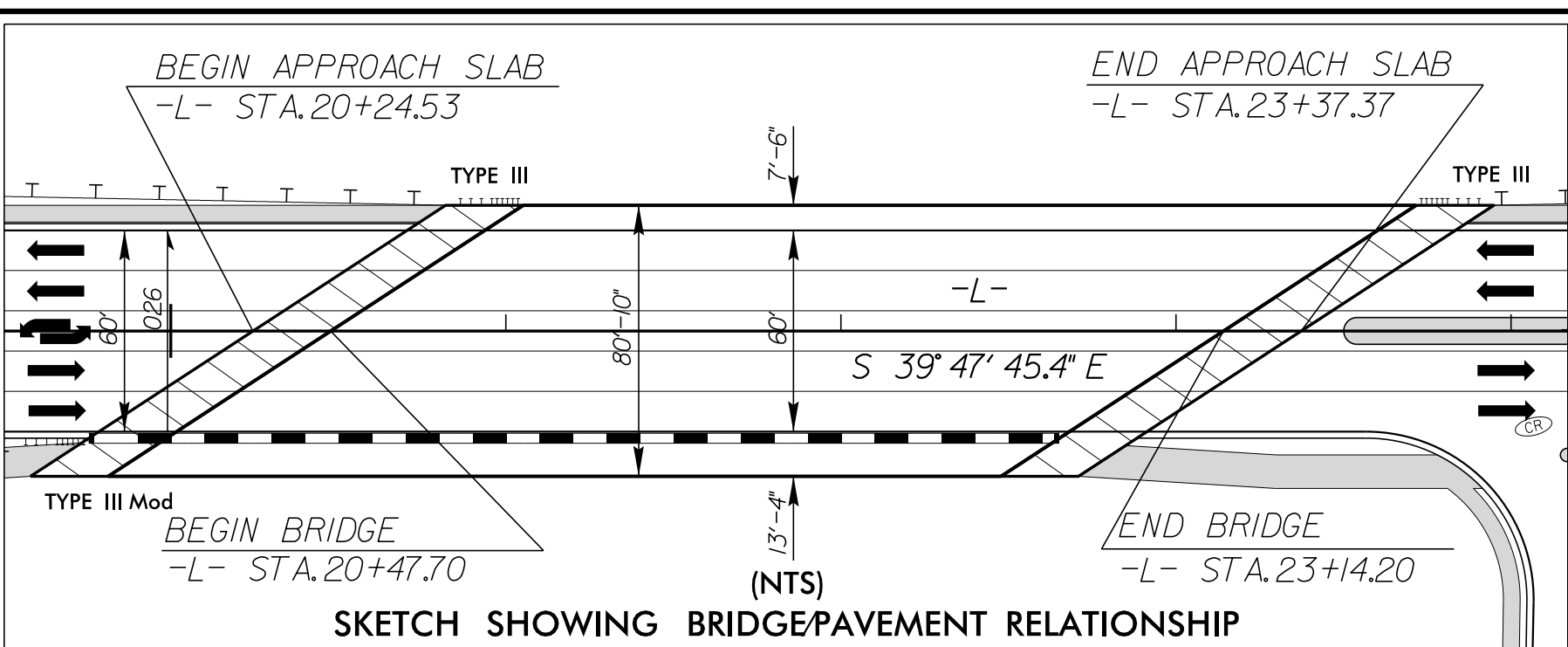


8/17/99  
44.41'  
10/04 PM  
C:\p04\proj\B5869.rdw\p05.dgn  
PK 5869

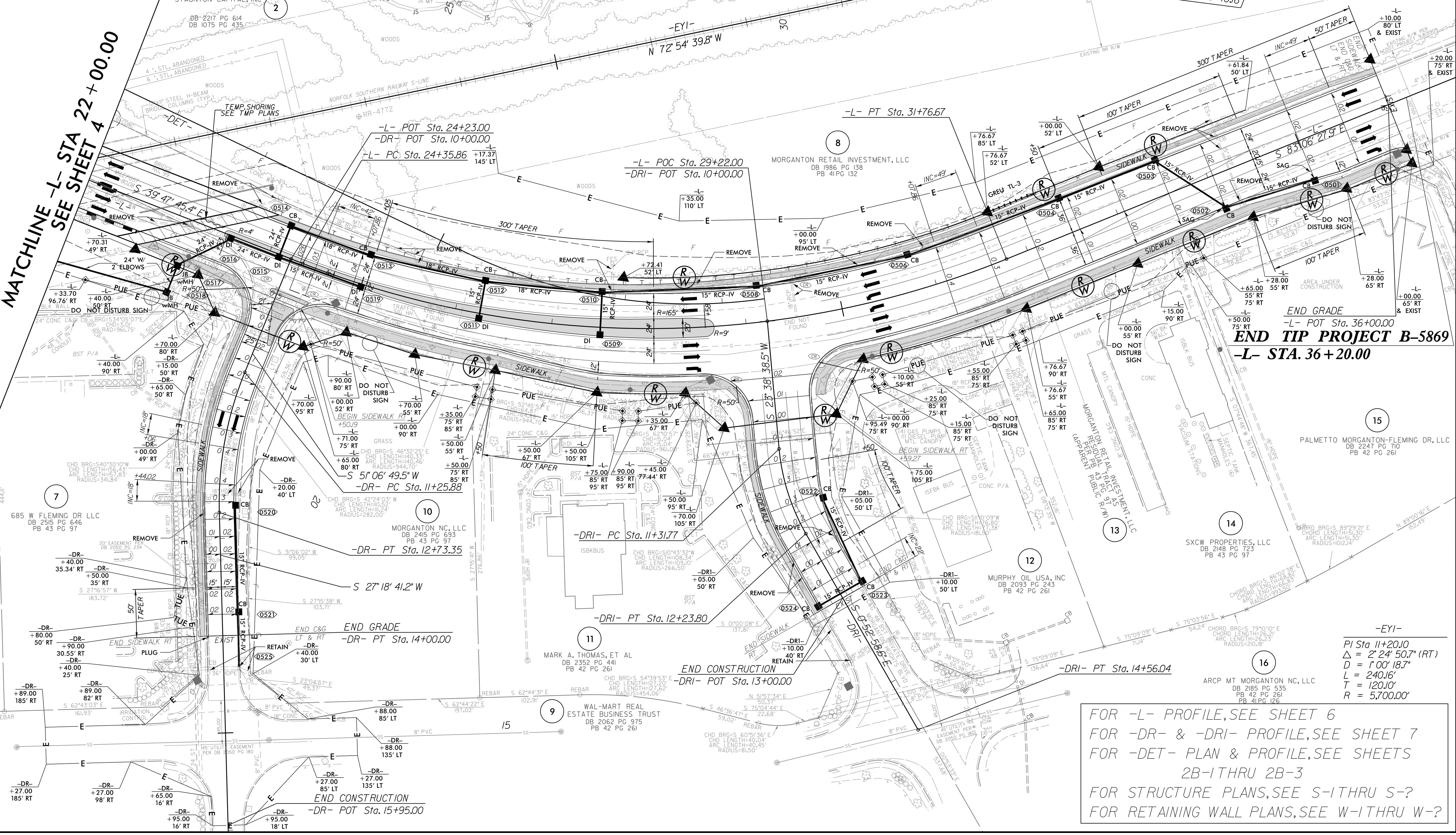


-L-	-DR-	-DRI-
PI Sta 28+24.97	PI Sta 12+00.69	PI Sta 11+78.50
$\Delta = 43^\circ 18' 42.4''$ (LT)	$\Delta = 23^\circ 48' 08.3''$ (LT)	$\Delta = 24^\circ 31' 37.1''$ (LT)
$D = 5^\circ 50' 47.4''$	$D = 16^\circ 08' 22.8''$	$D = 26^\circ 38' 57.1''$
$L = 740.81'$	$L = 147.48'$	$L = 92.04'$
$T = 389.12'$	$T = 74.82'$	$T = 46.73'$
$R = 980.00'$	$R = 355.00'$	$R = 215.00'$
$SE = 0.04$	$SE = 0.04$	$SE = 0.03$
$RO = 168.00'$	$RO = 72.00'$	$RO = 66.00'$

Prepared in the Office of:  
**M** MOTT MACDONALD  
7621 Purfoy Rd., Suite 115  
Fuquay-Varina, NC 27526  
www.mottmac.com/americas

**SUNGATE DESIGN GROUP, P.A.**  
805 JONES FRANKLIN ROAD  
RALEIGH, NORTH CAROLINA 27608  
TEL (919) 885-2243  
FAX (919) 885-2243  
ENG. FIRM LICENSE NO. C-880

PROJECT REFERENCE NO. <b>B-5869</b>		SHEET NO. <b>5</b>	
RW SHEET NO.		HYDRAULICS ENGINEER	
ROADWAY DESIGN ENGINEER		SEAL 27391	
NORTH CAROLINA PROFESSIONAL SEAL		NORTH CAROLINA PROFESSIONAL SEAL	
MOTT MACDONALD ENGINEERS		SUNGATE DESIGN GROUP, P.A.	
LICENSE NO. E-0669		LICENSE NO. C-890	
<b>DOCUMENT NOT CONSIDERED FINAL UNLESS ALL SIGNATURES COMPLETED</b>			



FOR -L- PROFILE, SEE SHEET 6  
FOR -DR- & -DRI- PROFILE, SEE SHEET 7  
FOR -DET- PLAN & PROFILE, SEE SHEETS 2B-1 THRU 2B-3  
FOR STRUCTURE PLANS, SEE S-1 THRU S-?  
FOR RETAINING WALL PLANS, SEE W-1 THRU W-?