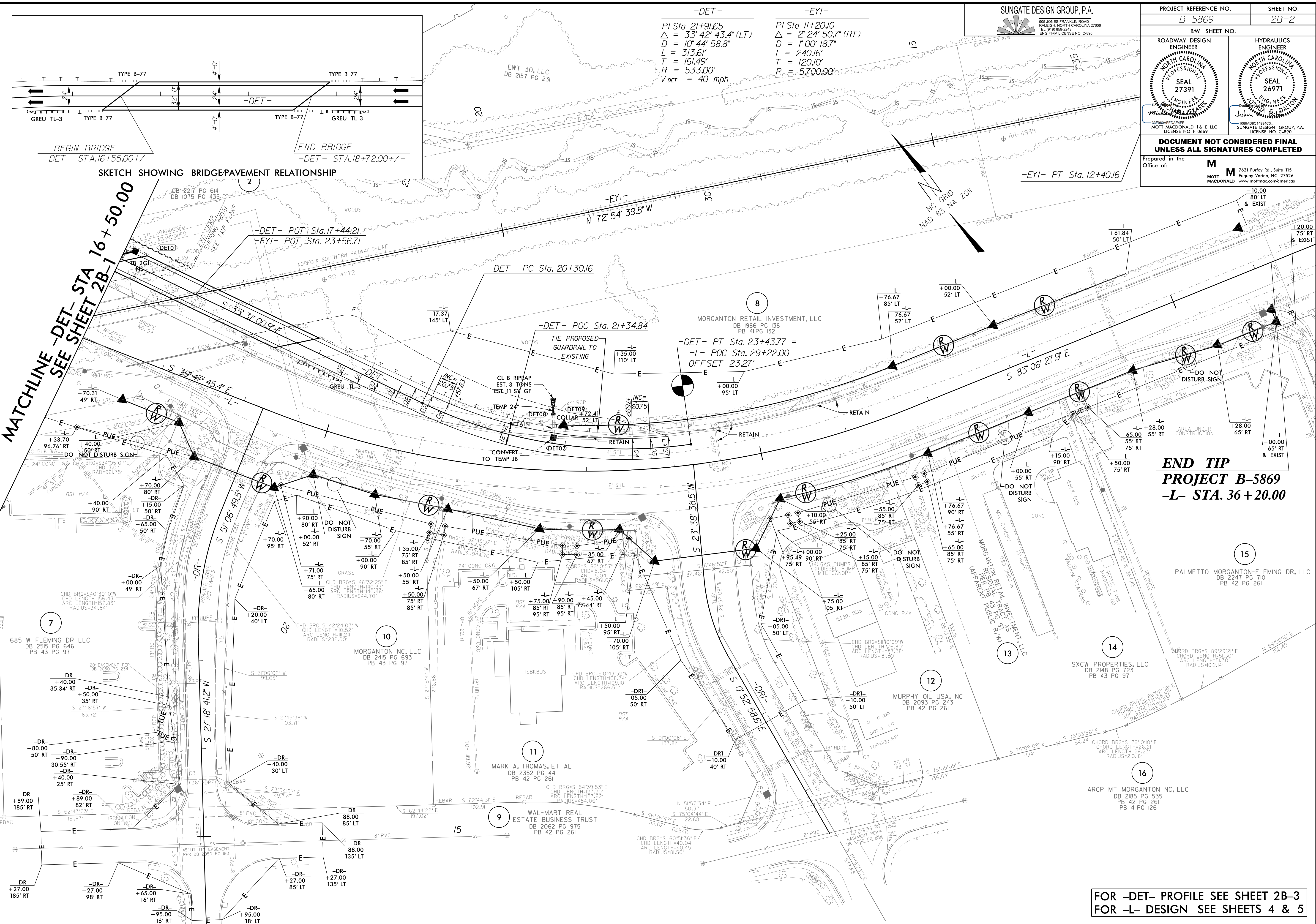
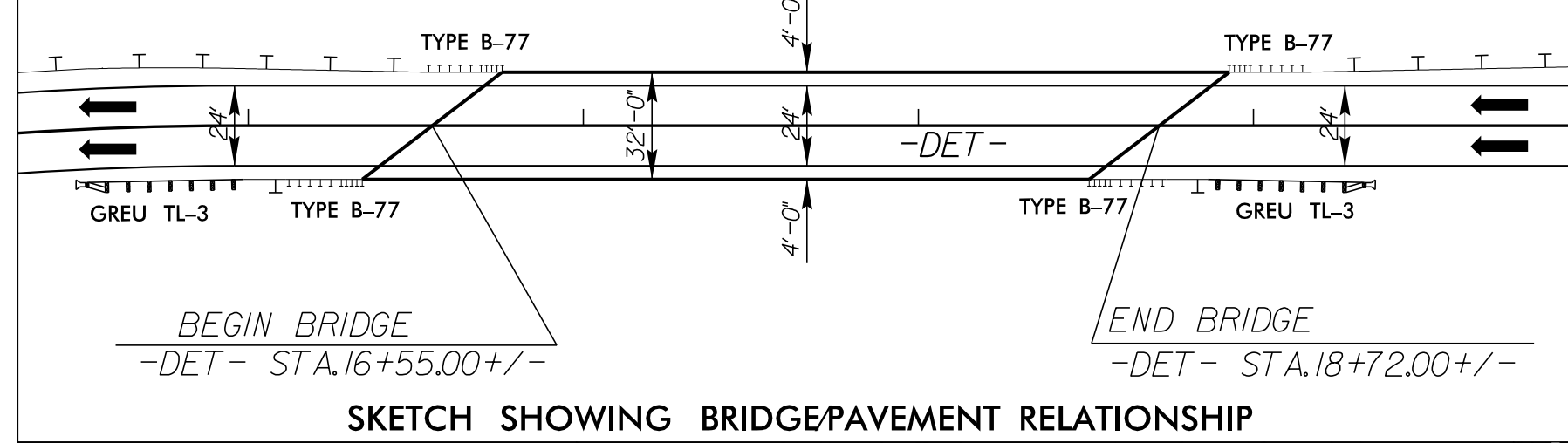


8/17/99
10/30/17 AM
C:\Roadwork\Proj\B5869.rdw_psh02B-2.dgn
PK 56884



MATCHLINE -DET- STA. 16+50.00
SEE SHEET 2B-1



-DET-
 PI Sta 21+91.65
 $\Delta = 33^\circ 42' 43.4''$ (LT)
 $D = 10^\circ 44' 58.8''$
 $L = 313.6'$
 $T = 161.49'$
 $R = 533.00'$
 $V_{DET} = 40$ mph

-EYI-
 PI Sta 11+20.10
 $\Delta = 2^\circ 24' 50.7''$ (RT)
 $D = 1^\circ 00' 18.7''$
 $L = 240.16'$
 $T = 120.10'$
 $R = 5,700.00'$

SUNGATE DESIGN GROUP, P.A.
 805 JONES FRANKLIN ROAD
 RALEIGH, NORTH CAROLINA 27608
 TEL (919) 885-2243
 ENG FIRM LICENSE NO. C-880

PROJECT REFERENCE NO. B-5869		SHEET NO. 2B-2	
RW SHEET NO.			
ROADWAY DESIGN ENGINEER SEAL 27391		HYDRAULICS ENGINEER SEAL 26971	
MOTT MACDONALD 1 & E, LLC LICENSE NO. F-0669		SUNGATE DESIGN GROUP, P.A. LICENSE NO. C-890	
<p>DOCUMENT NOT CONSIDERED FINAL UNLESS ALL SIGNATURES COMPLETED</p> <p>Prepared in the Office of:</p> <p>M MOTT MACDONALD 7621 Purfoy Rd., Suite 115 Fuquay-Varina, NC 27526 www.motmac.com/motmac</p>			

END TIP
PROJECT B-5869
-L- STA. 36+20.00

FOR -DET- PROFILE SEE SHEET 2B-3
 FOR -L- DESIGN SEE SHEETS 4 & 5