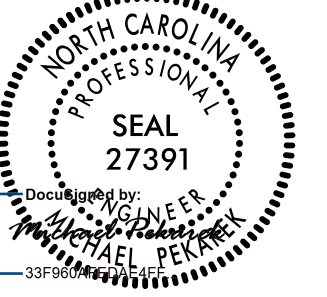

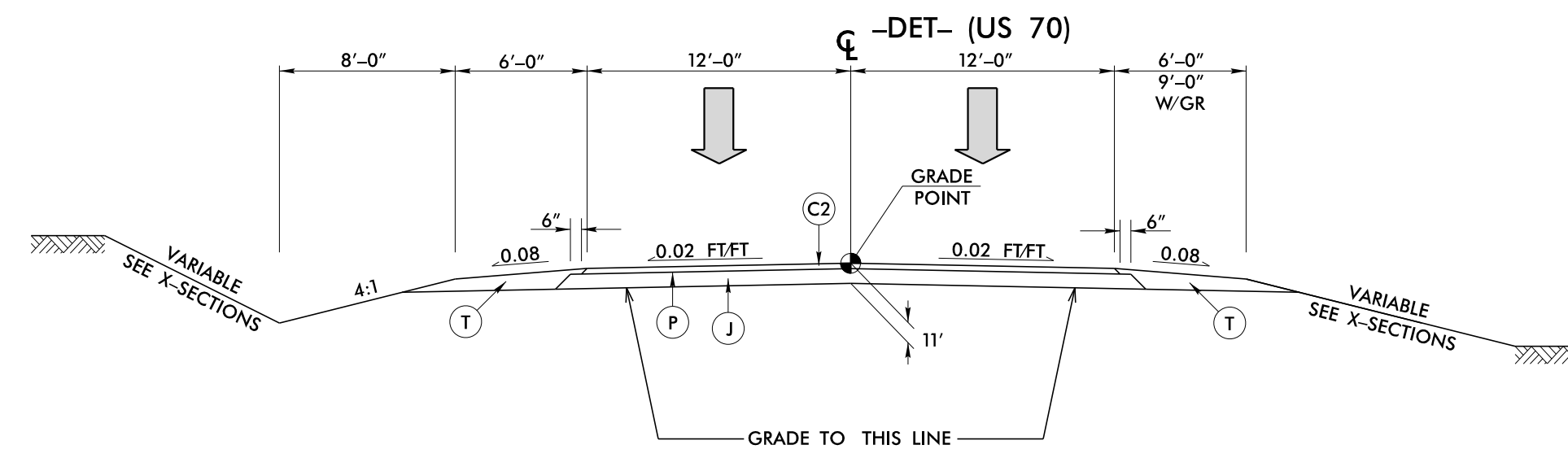


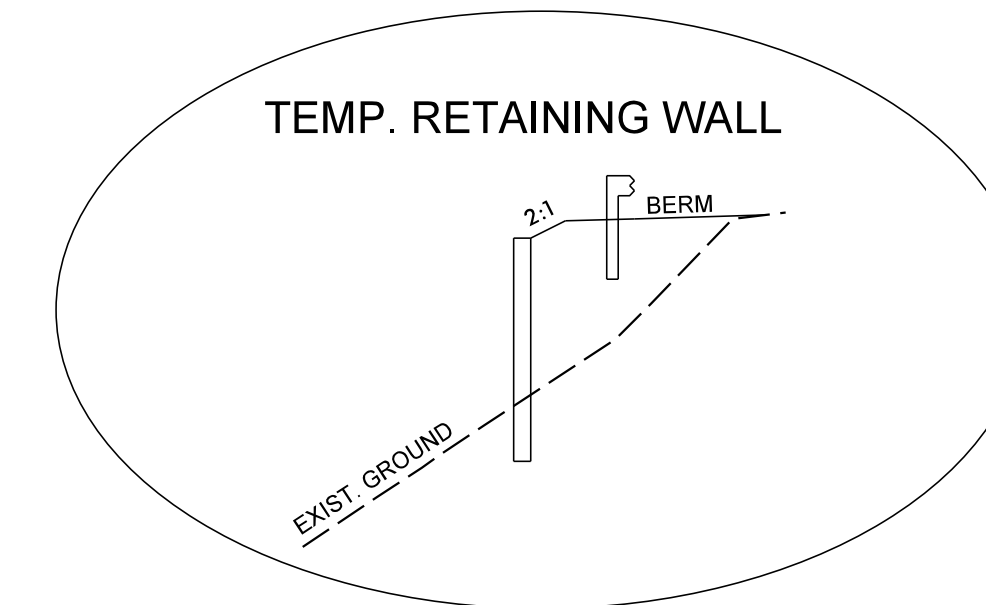
PROJECT REFERENCE NO. B-5869	SHEET NO. 2A-3
RW SHEET NO.	
ROADWAY DESIGN ENGINEER 	PAVEMENT DESIGN ENGINEER 
<p>DOCUMENT NOT CONSIDERED FINAL UNLESS ALL SIGNATURES COMPLETED</p> <p>Prepared in the Office of: M MOTT MACDONALD I & E, LLC <small>7621 Purfoy Rd., Suite 115 Fuquay-Varina, NC 27526 www.mottmac.com/americas</small></p>	



ROADWAY TYPICAL SECTION NO. 6

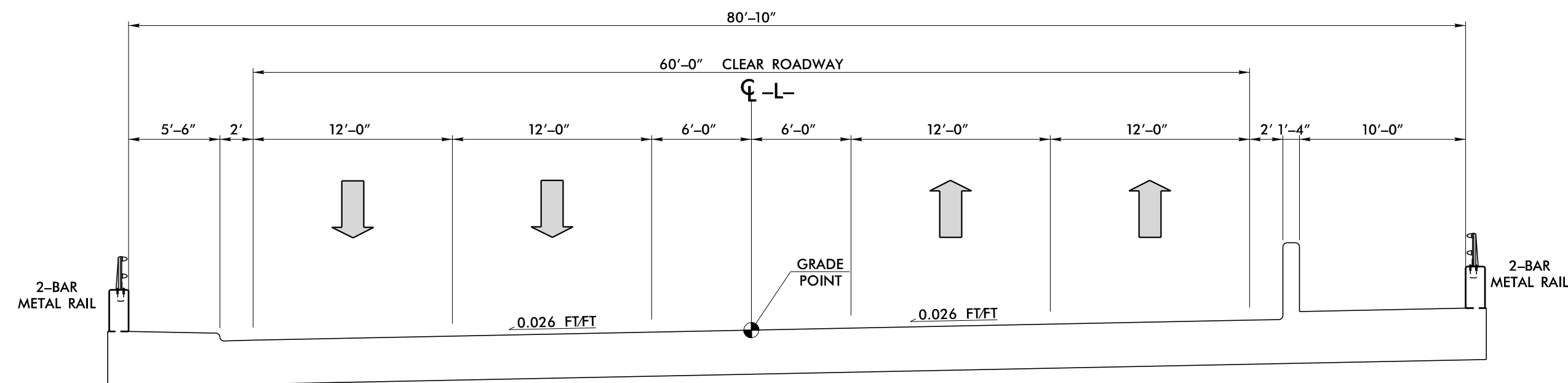
USE TYPICAL SECTION NO. 6:

-DET- STA 12+17.72 TO 16+55.00 +/- (BEGIN BRIDGE)
 -DET- STA 18+72.00 +/- (END BRIDGE) TO 21+34.84



DETAIL D

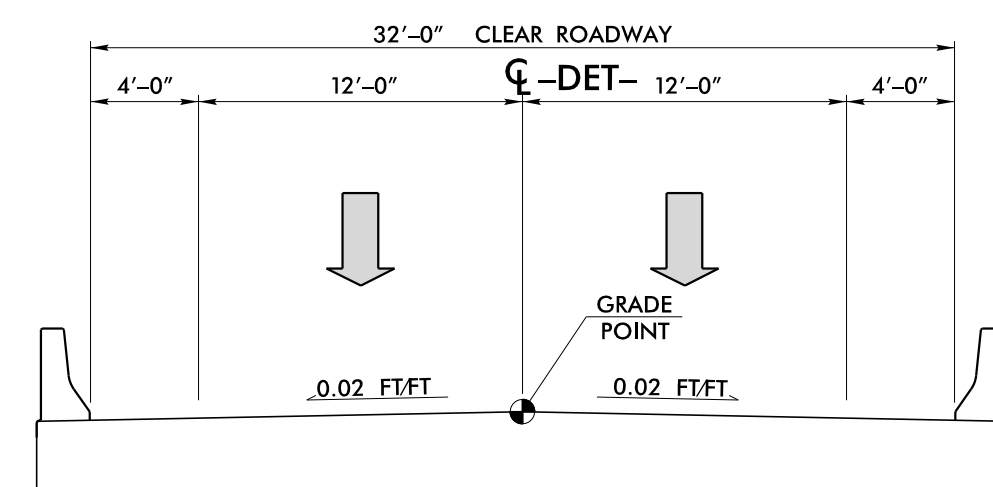
USE IN CONJUNCTION WITH TYPICAL SECTION NO. 6
 -DET- STA. 10+76.72 TO 17+28.00



ROADWAY TYPICAL SECTION NO. 7

USE TYPICAL SECTION NO. 7:

-L- STA 20+47.70 (BEGIN BRIDGE) TO 23+14.20 (END BRIDGE)



ROADWAY TYPICAL SECTION NO. 8

USE TYPICAL SECTION NO. 8:

-DET- STA 16+55.00 +/- (BEGIN BRIDGE) TO 18+72.00 +/- (END BRIDGE)

PAVEMENT SCHEDULE	
C1	1.5" S9.5B
C2	3" S9.5B
C3	VAR. DEPTH S9.5B
D1	4" I19.0C
D2	VAR. DEPTH I19.0C
E1	4" B25.0C
E2	VAR. DEPTH B25.0C
J	8" AGGREGATE BASE COURSE
P	PRIME COAT
R1	2'-6" CURB AND GUTTER
R2	MONOLITHIC CONCRETE ISLAND (KEYED IN)
S	4" CONCRETE SIDEWALK
T	EARTH MATERIAL
U	EXISTING PAVEMENT
V1	INCIDENTAL MILLING
V2	1 1/2" MILLING
W	WEDGING

NOTE: PAVEMENT EDGE SLOPES ARE 1:1 LESS SHOWN OTHERWISE.