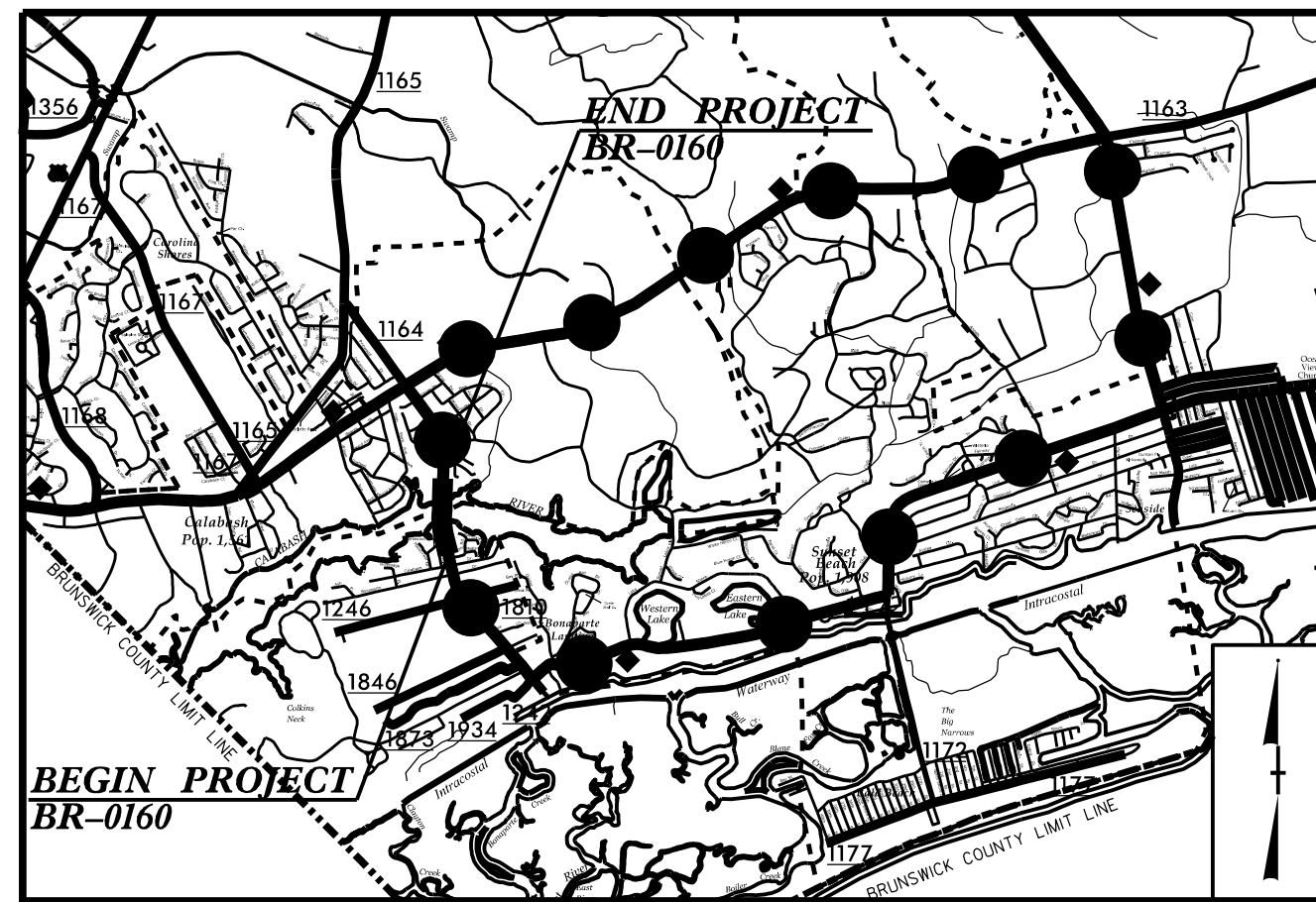
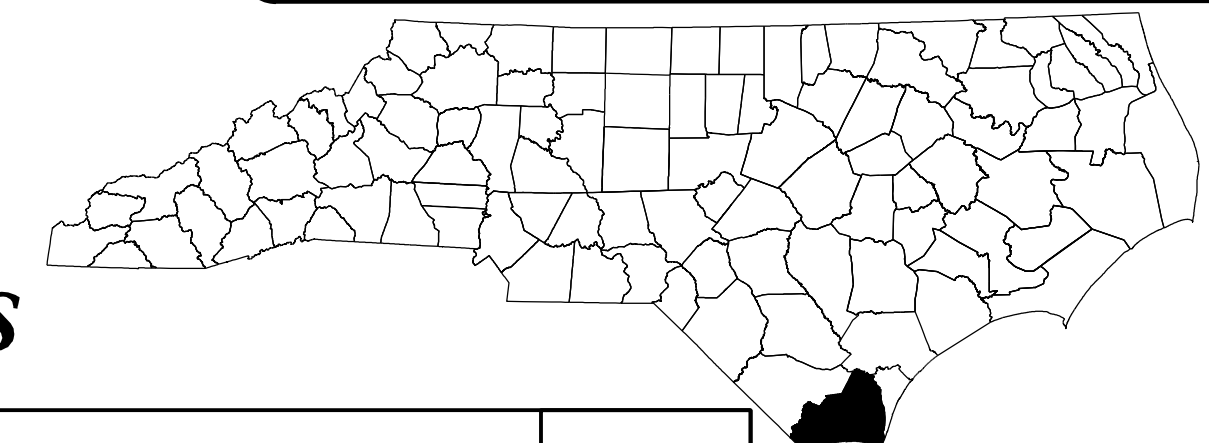


STATE OF NORTH CAROLINA
DIVISION OF HIGHWAYS

NAD 83/
NA 2011

T.I.P. NO.	SHEET NO.
BR-0160	UO-1

NOTE:
ALL UTILITY WORK SHOWN ON THIS SHEET WILL BE DONE BY OTHERS.
NO PAYMENT WILL BE MADE TO THE CONTRACTOR FOR UTILITY WORK SHOWN ON THIS SHEET.



—●—●—●— **DETOUR**
VICINITY MAP N.T.S

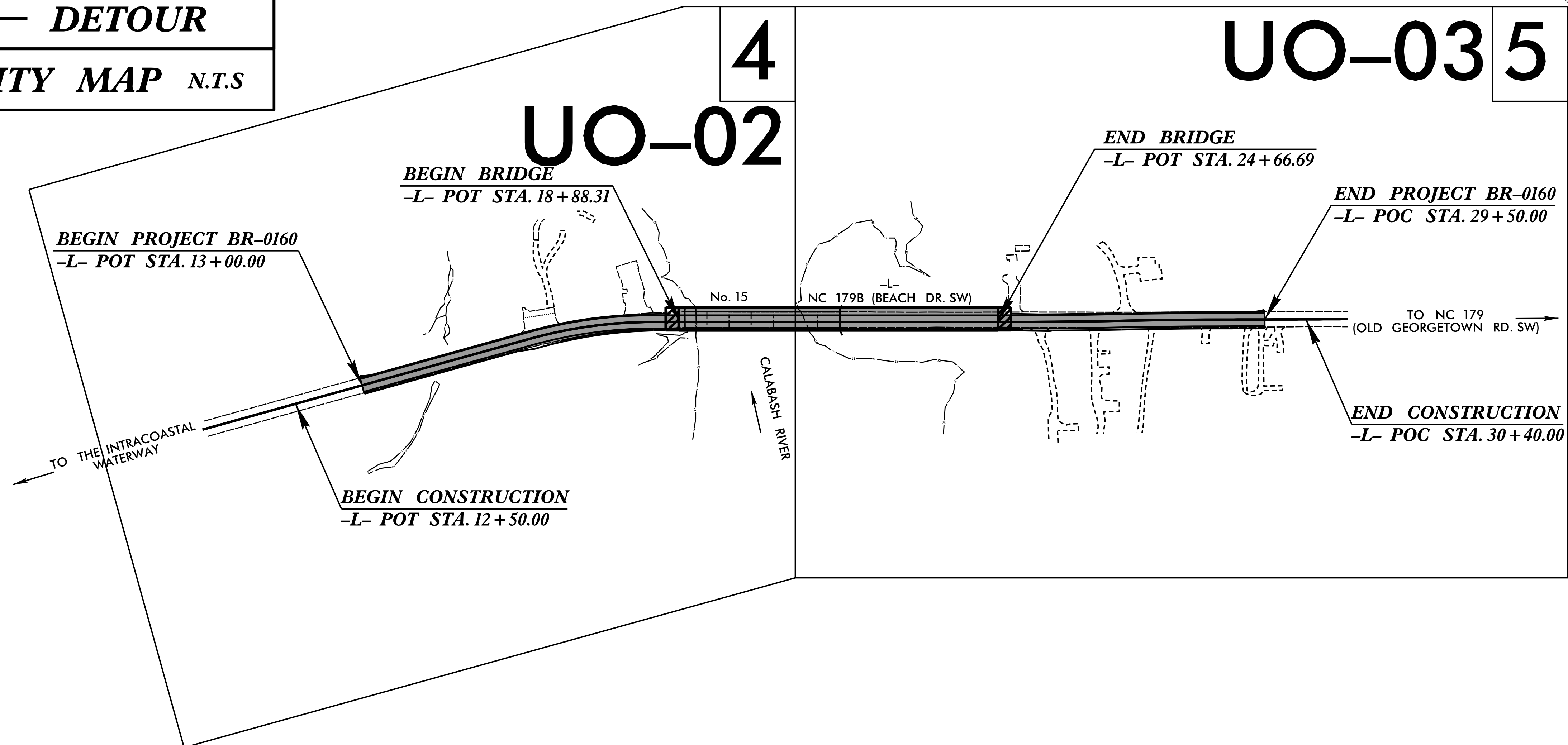
**UTILITIES BY OTHERS PLANS
BRUNSWICK COUNTY**

LOCATION: REPLACE BRIDGE 15 OVER CALABASH RIVER ON NC 179B (BEACH DR. SW)

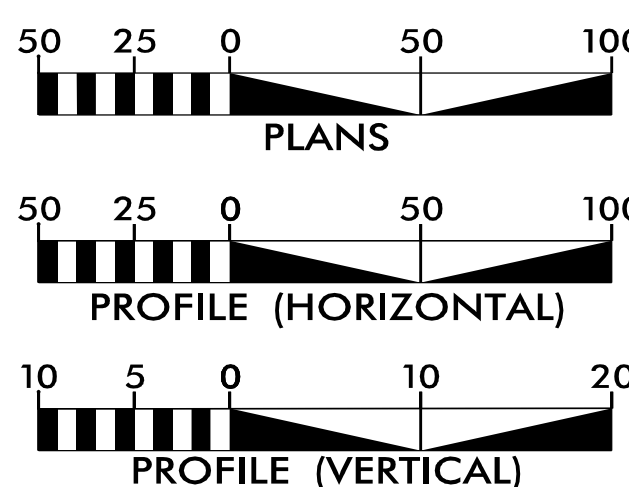
TYPE OF WORK: POWER (DISTRIBUTION) AND COMMUNICATIONS

PROJECT: BR-0160

CONTRACT: C204853



GRAPHIC SCALES



INDEX OF SHEETS

SHEET NO.:	DESCRIPTION:
UO-1	TITLE SHEET
UO-02 THRU UO-03	UBO PLAN SHEETS

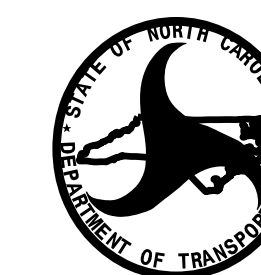
UTILITY OWNERS WITH CONFLICTS

- (A) POWER - BEMC
- (B) COMMUNICATIONS - FOCUS

PREPARED IN THE OFFICE OF:

SAIMTM
2641 Sumner Boulevard
Suite 116
Raleigh, NC 27616
(919) 878-7466

Freddie Bunn **UTILITY PROJECT MANAGER**
Patrick Jones **PROJECT UTILITY COORDINATOR**



**DIVISION OF HIGHWAYS
DIVISION 03**
DIV ADDRESS
5501 Barbados Blvd.
Castle Hayne, NC 28429

Lonny Sleeper **DIVISION UTILITY ENGINEER**
Eric Matuszewski **SENIOR UTILITY COORDINATOR**

09/28/09

2/16/2023
2:36:29 PM
2:\BFO\160_Rdy_tsh.dgn

UTILITIES BY OTHERS

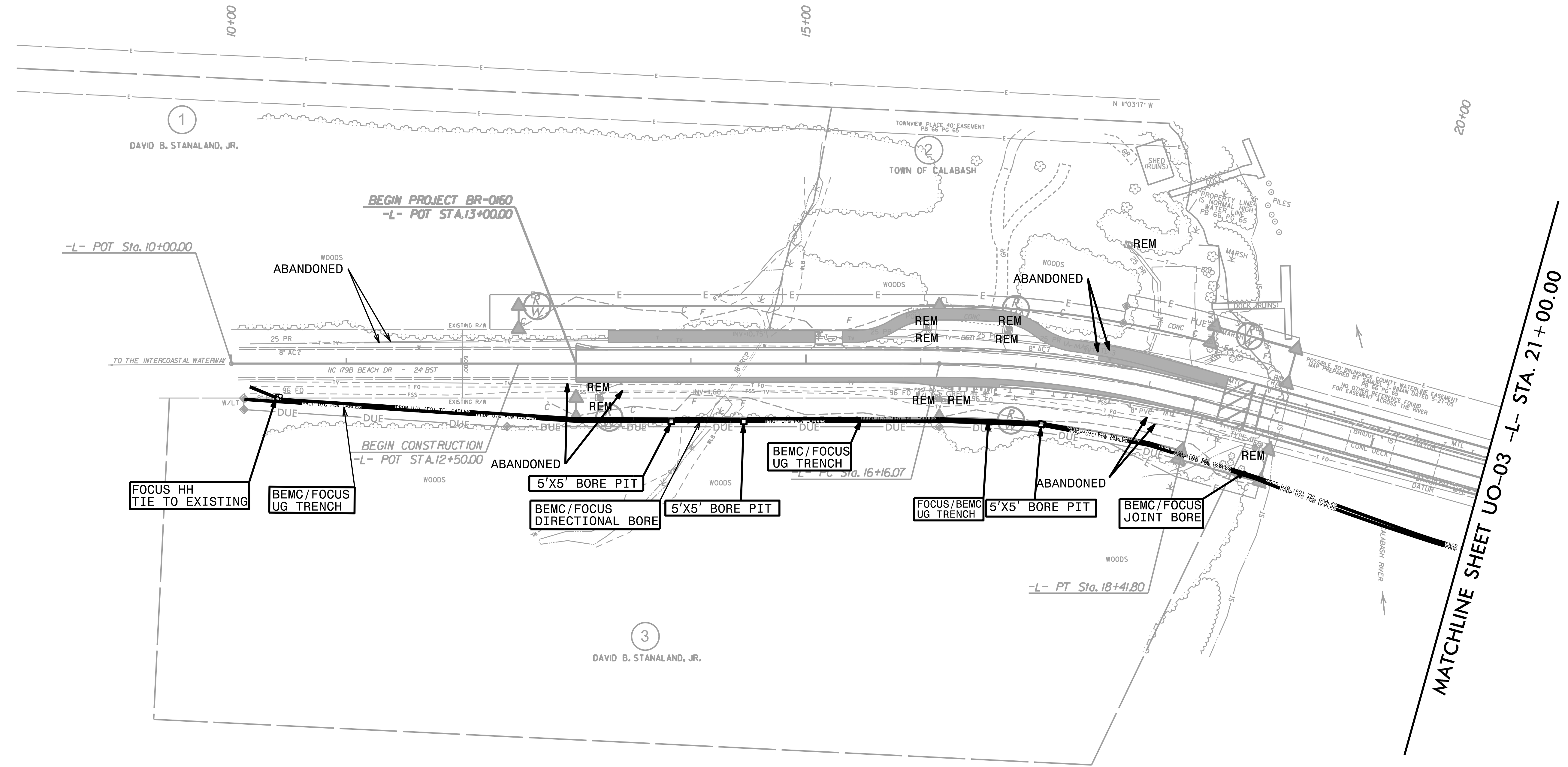
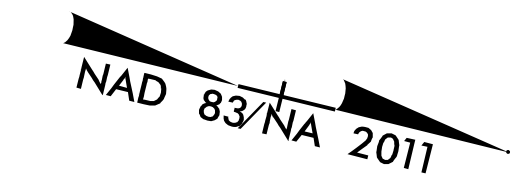
ALL PROPOSED UTILITY WORK SHOWN ON THIS SHEET WILL BE DONE BY OTHERS. NO PAYMENT WILL BE MADE TO THE CONTRACTOR FOR PROPOSED UTILITY WORK SHOWN ON THIS SHEET.

NOTE:
FOCUS TO PLACE (2) 4" CONDUITS FOR BORE LOCATIONS UNDER RIVER AND ROAD

NOTE:
BEMC TO PLACE (4) 4" CONDUITS FOR BORE LOCATIONS UNDER RIVER AND ROAD

NOTE:
FOCUS TO PLACE (2) 4" CONDUITS AND (1) 2" CONDUIT FOR OPEN CUT

NOTE:
BEMC TO PLACE (3) 4" CONDUITS FOR OPEN CUT LOCATIONS FOR A TOTAL OF 1,460 LINEAR FEET



5/14/99
1/11/2003
3:11:33
160_Rdy_psh_4.dgn

PROJECT REFERENCE NO. BR-0160	SHEET NO. UO-03
THIS SHEET CORRESPONDS TO RDY- 5	

UTILITIES BY OTHERS

ALL PROPOSED UTILITY WORK SHOWN ON THIS SHEET WILL BE DONE BY OTHERS. NO PAYMENT WILL BE MADE TO THE CONTRACTOR FOR PROPOSED UTILITY WORK SHOWN ON THIS SHEET.



NOTE:
FOCUS TO PLACE (2) 4" CONDUITS FOR BORE LOCATIONS UNDER RIVER AND ROAD

NOTE:
BEMC TO PLACE (3) 4" CONDUITS FOR OPEN CUT LOCATIONS FOR A TOTAL OF 1,460 LINEAR FEET

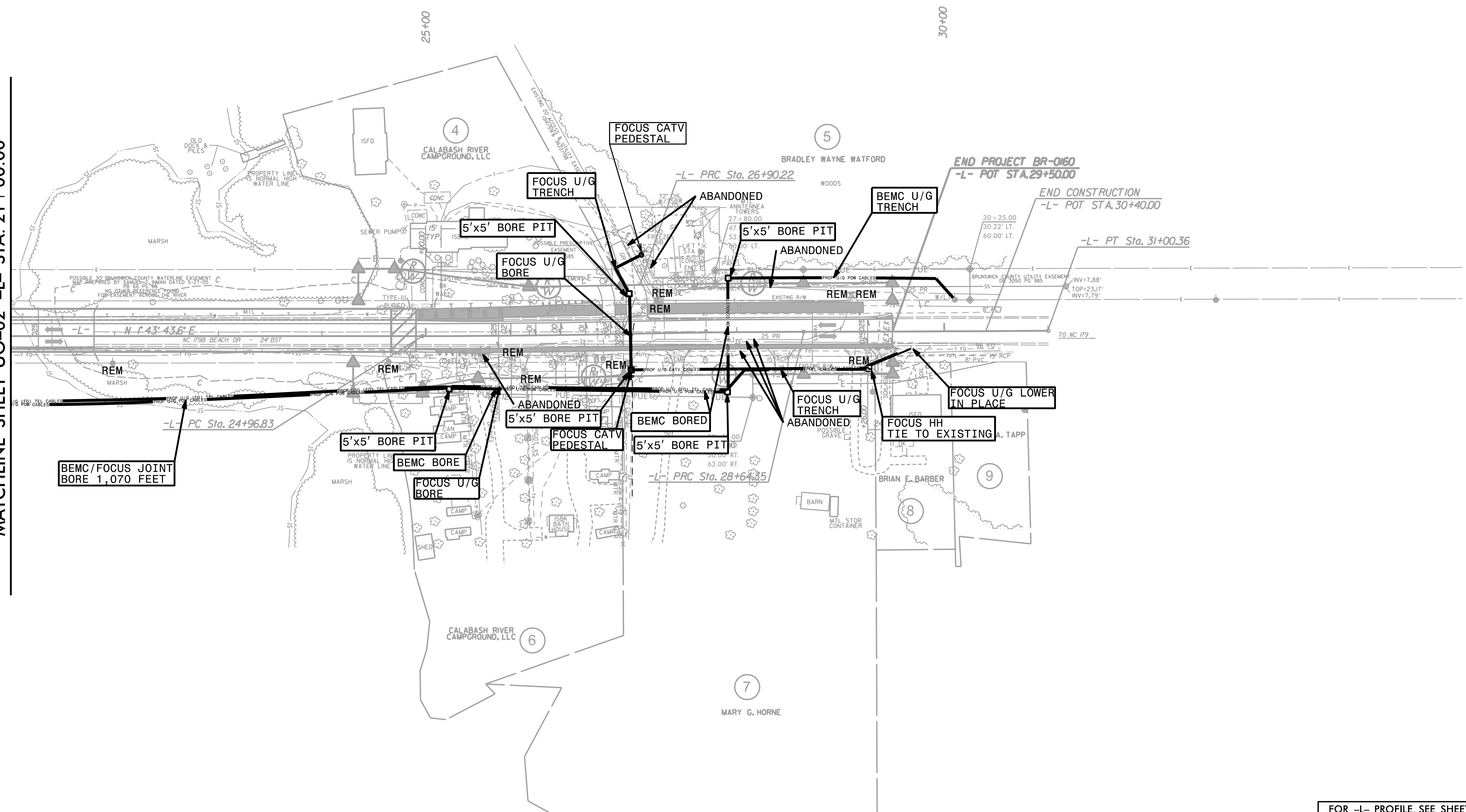
NOTE:
FOCUS TO PLACE (2) 4" CONDUITS AND (1) 2" CONDUIT FOR OPEN CUT

NOTE:
BEMC TO PLACE (4) 4" CONDUITS FOR BORE LOCATIONS UNDER RIVER AND ROAD

8/17/99

REVISIONS

MATCHLINE SHEET UO-02 -L- STA. 21+00.00



FOR -L- PROFILE, SEE SHEET NO. 6

1/11/2023
3:53:29 PM
53185231.dgn