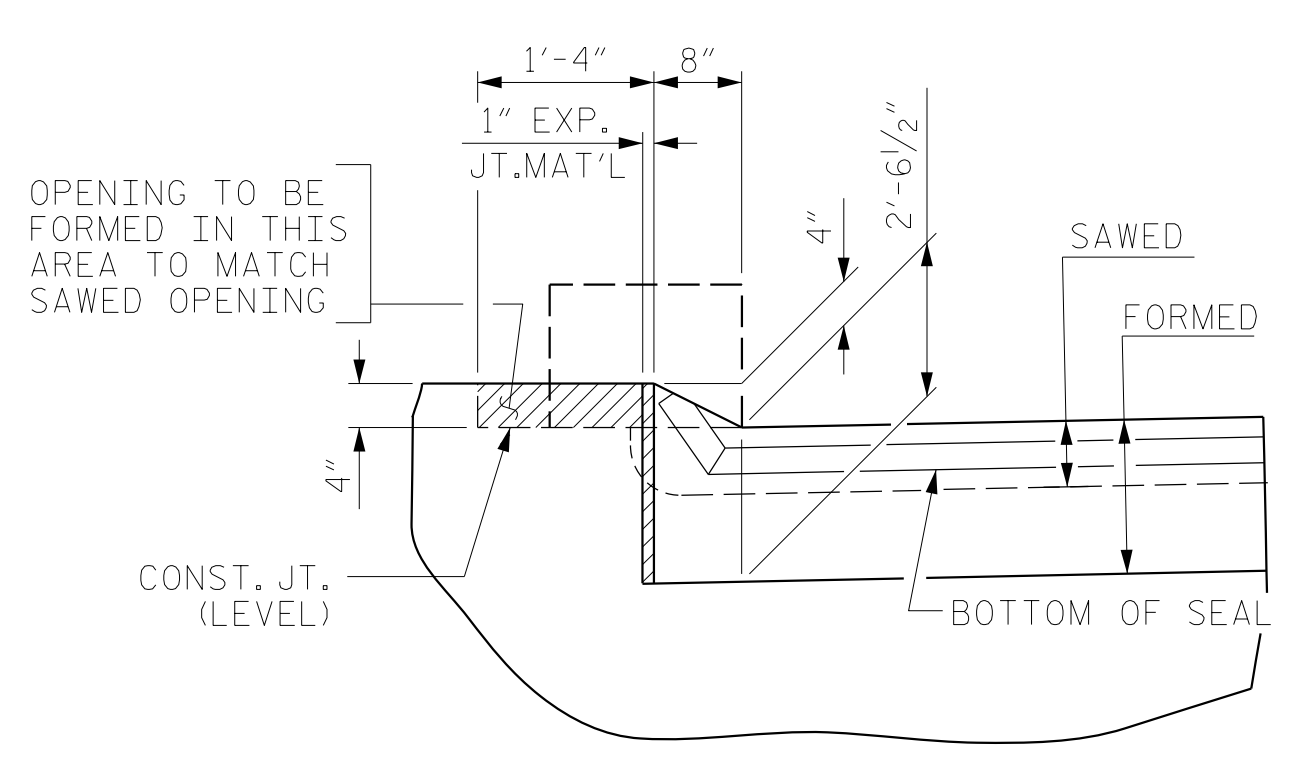
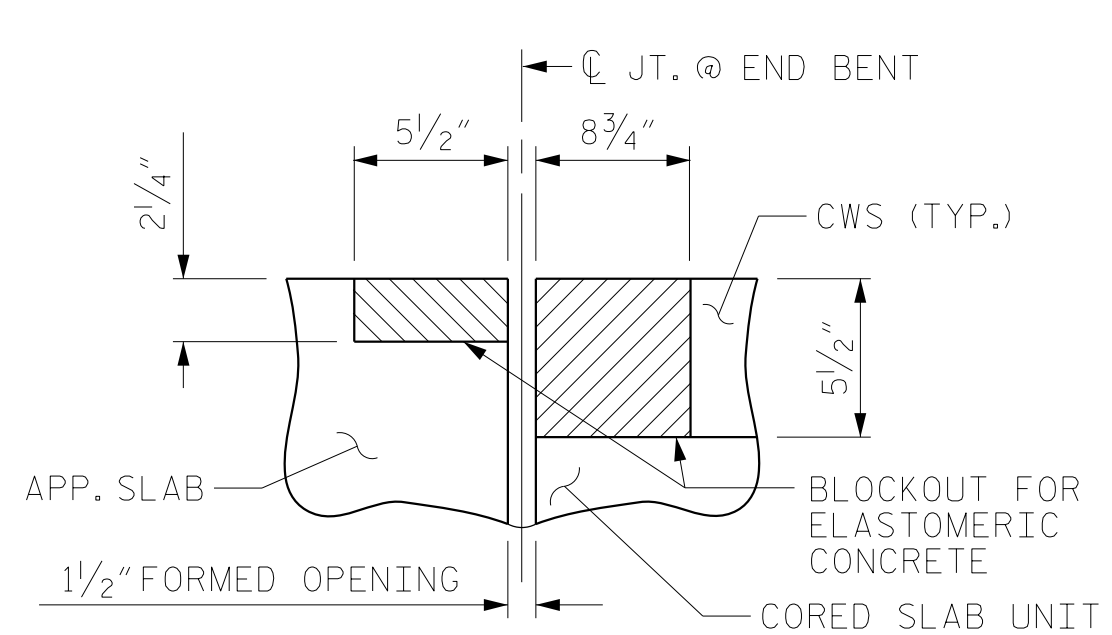


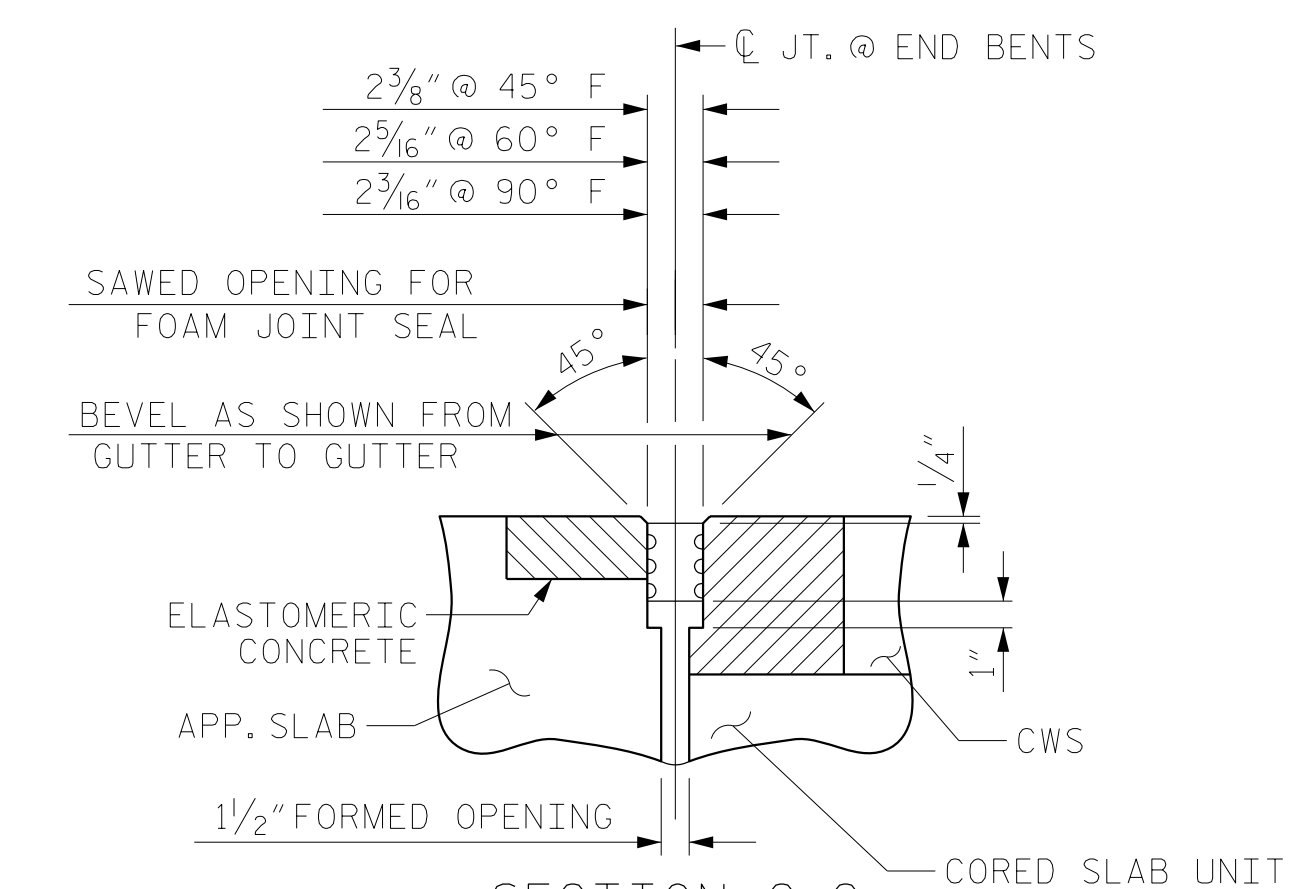
SECTION A-A



SECTION B-B



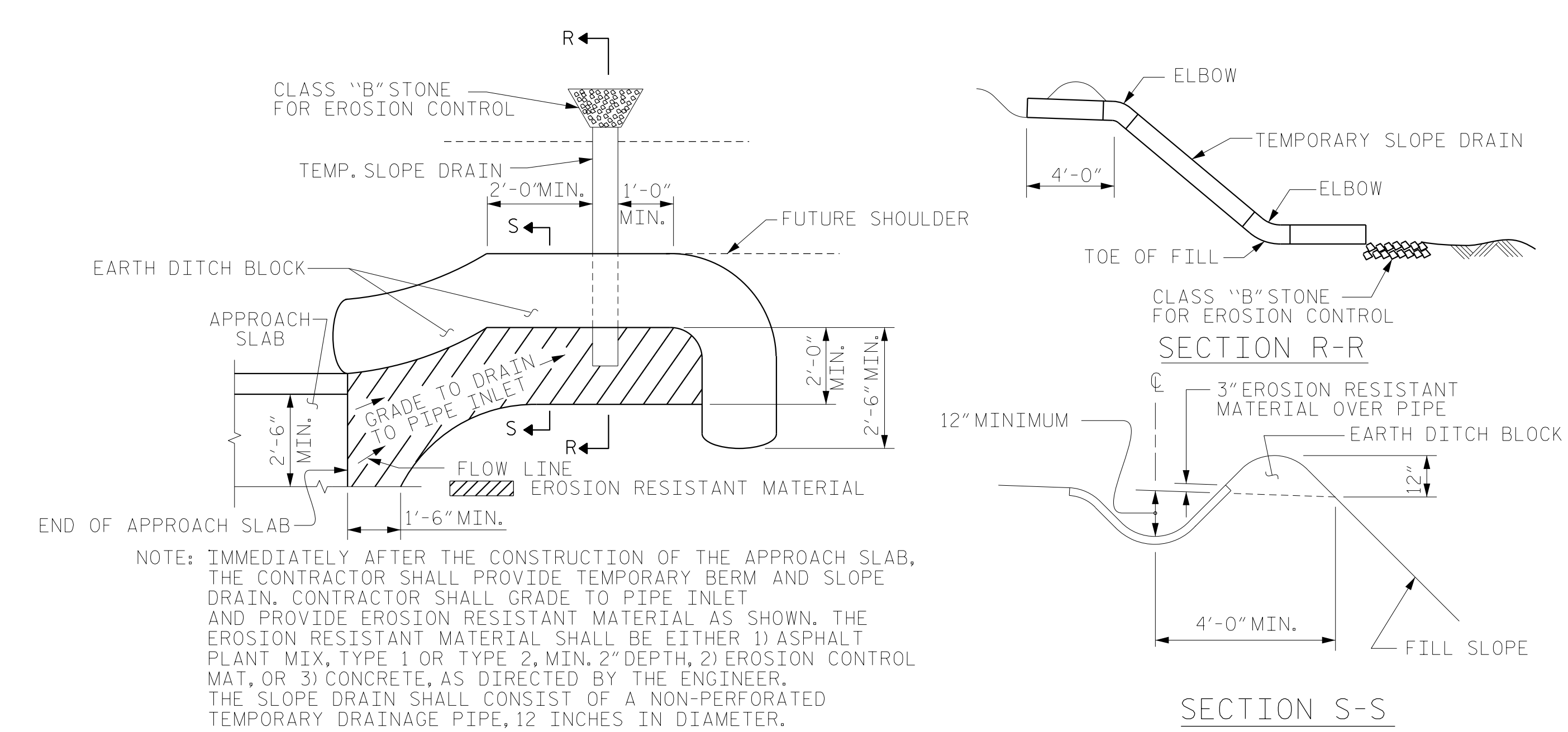
SECTION C-C  
FOAM JOINT SEAL  
(PRE-SAWED ELASTOMERIC  
CONCRETE DIMENSIONS)



SECTION C-C  
FOAM JOINT SEAL  
(EXPANSION)

**JOINT SEAL DETAILS @ END BENTS**

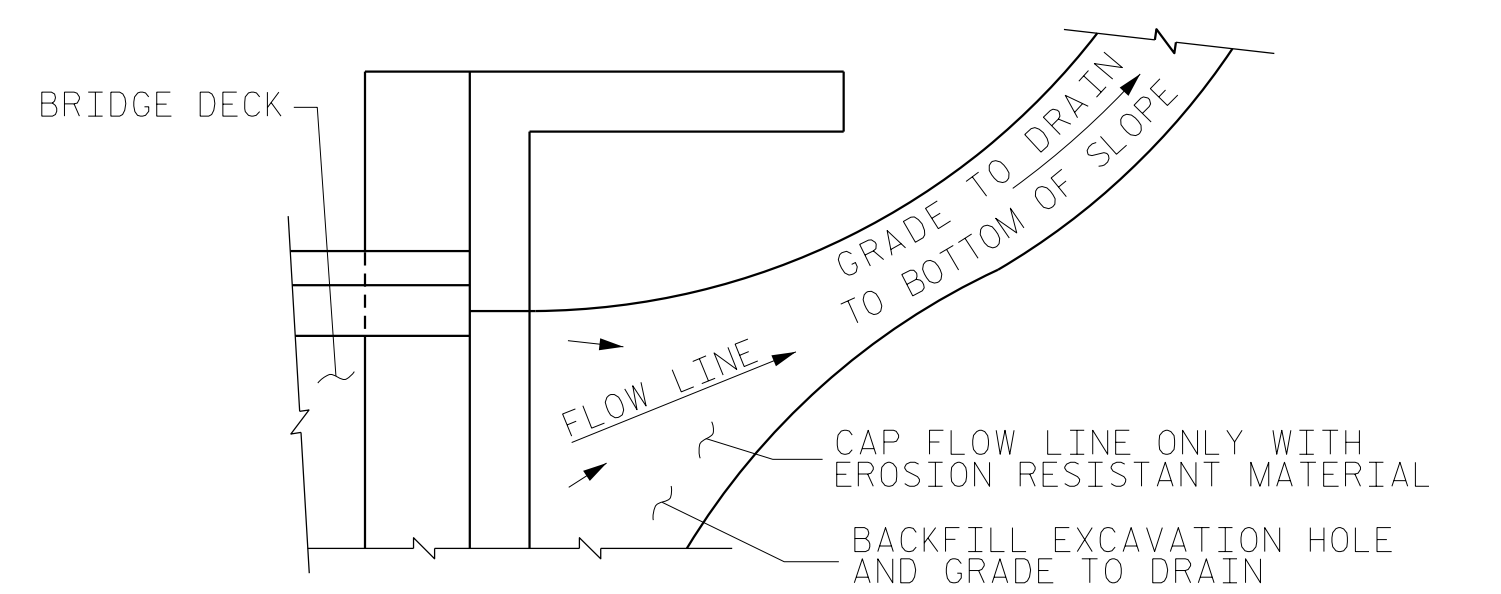
FOAM JOINT SEAL TO BE CUT, HEAT WELDED AND TURNED UP PARALLEL TO SLOPED FACE OF THE CURB.  
END BENT NO. 1 SHOWN.  
END BENT NO. 2 SIMILAR BUT OPPOSITE HAND.



PLAN VIEW

**TEMPORARY BERM AND SLOPE DRAIN DETAILS**

(TO BE USED WHEN SHOULDER BERM GUTTER IS REQUIRED)



NOTE: IF THE APPROACH SLAB IS NOT CONSTRUCTED IMMEDIATELY AFTER THE BACKFILLING OF THE END BENT EXCAVATION, GRADE TO DRAIN TO THE BOTTOM OF THE SLOPE AND PROVIDE EROSION RESISTANT MATERIAL, SUCH AS FIBERGLASS ROVING OR AS DIRECTED BY THE ENGINEER TO PREVENT SOIL EROSION AND TO PROTECT THE AREA ADJACENT TO THE STRUCTURE. THE CONTRACTOR WILL BE REQUIRED TO REMOVE THESE MATERIALS PRIOR TO CONSTRUCTION OF THE APPROACH SLAB.

TEMPORARY DRAINAGE DETAIL

ELASTOMERIC CONCRETE	
END BENT NO.	ELASTOMERIC CONCRETE * (CU. FT.)
1	17.5
2	17.5
TOTAL	35.0

\* BASED ON THE MINIMUM BLOCKOUT SHOWN.

**WITH FOAM JOINT SEAL**

FOR FOAM JOINT SEALS, SEE SPECIAL PROVISIONS.  
FOR ELASTOMERIC CONCRETE, SEE SPECIAL PROVISIONS.  
THE NOMINAL UNCOMPRESSED SEAL WIDTH OF THE FOAM JOINT SEAL SHALL BE 3".  
THE JOINT SHALL BE SAWED AFTER PLACEMENT OF THE CONCRETE WEARING SURFACE (CWS) AND THE APPROACH SLAB BUT BEFORE PLACEMENT OF THE VERTICAL CONCRETE BARRIER RAIL.

**NOTES**

FOR NOTES, SEE SHEET 1 OF 2.

PROJECT NO. BR-0160  
BRUNSWICK COUNTY  
STATION: 21+77.50 -L-

SHEET 2 OF 2



8521 Six Forks Road, Suite 400  
Raleigh, NC 27615  
919-926-4100 FAX 919-846-9080  
www.rsandh.com  
North Carolina License No. 50737-F-0403-C-03

STATE OF NORTH CAROLINA  
DEPARTMENT OF TRANSPORTATION  
RALEIGH  
**BRIDGE APPROACH SLAB  
DETAILS**

REVISIONS						SHEET NO.
NO.	BY:	DATE:	NO.	BY:	DATE:	S-42
1			3			TOTAL SHEETS
2			4			42

DRAWN BY :	NSC	DATE :	01/2022
CHECKED BY :	MRA	DATE :	01/2023
DESIGN ENGINEER OF RECORD:	RLB	DATE :	03/2023

DOCUMENT NOT CONSIDERED  
FINAL UNLESS ALL  
SIGNATURES COMPLETED