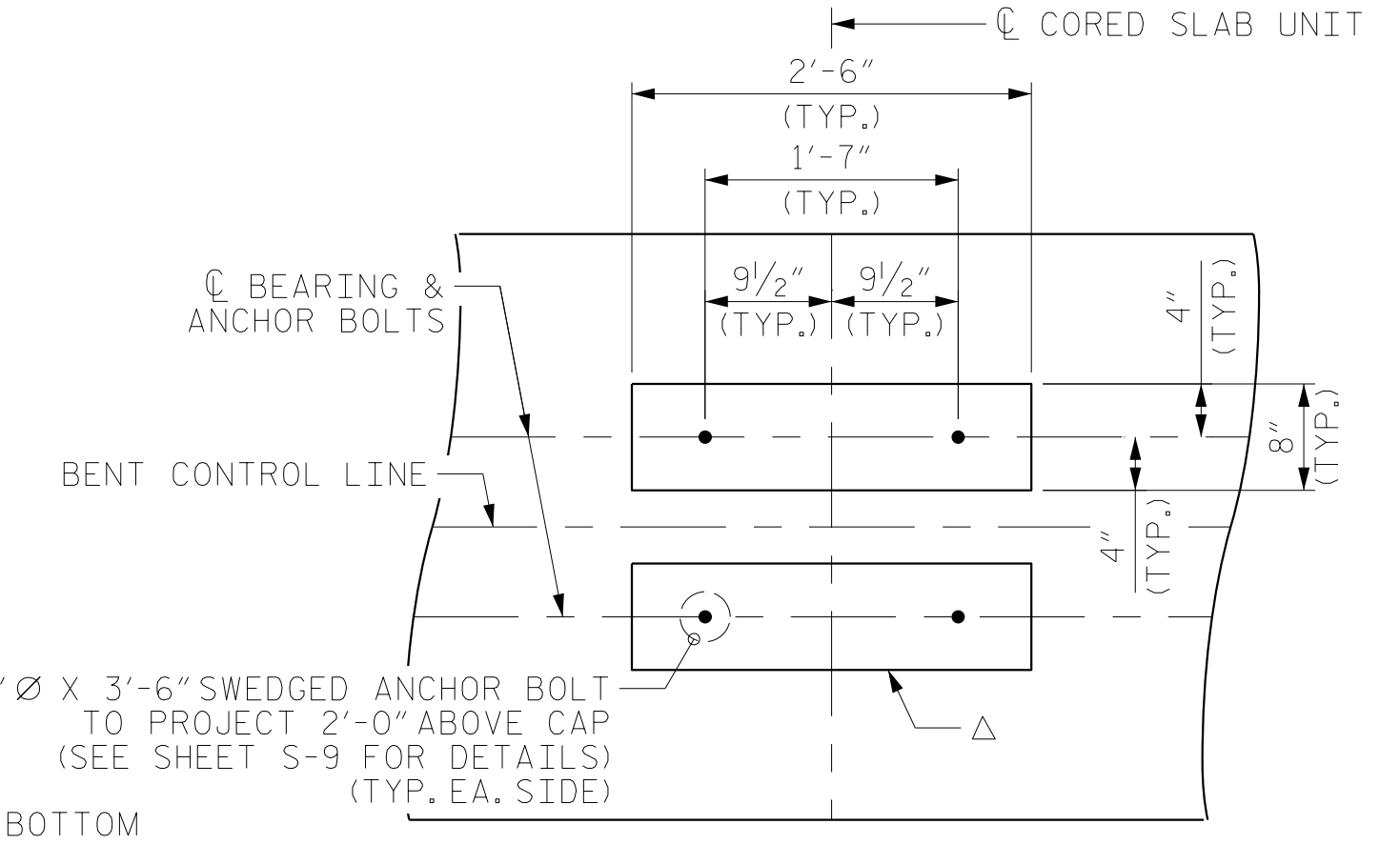
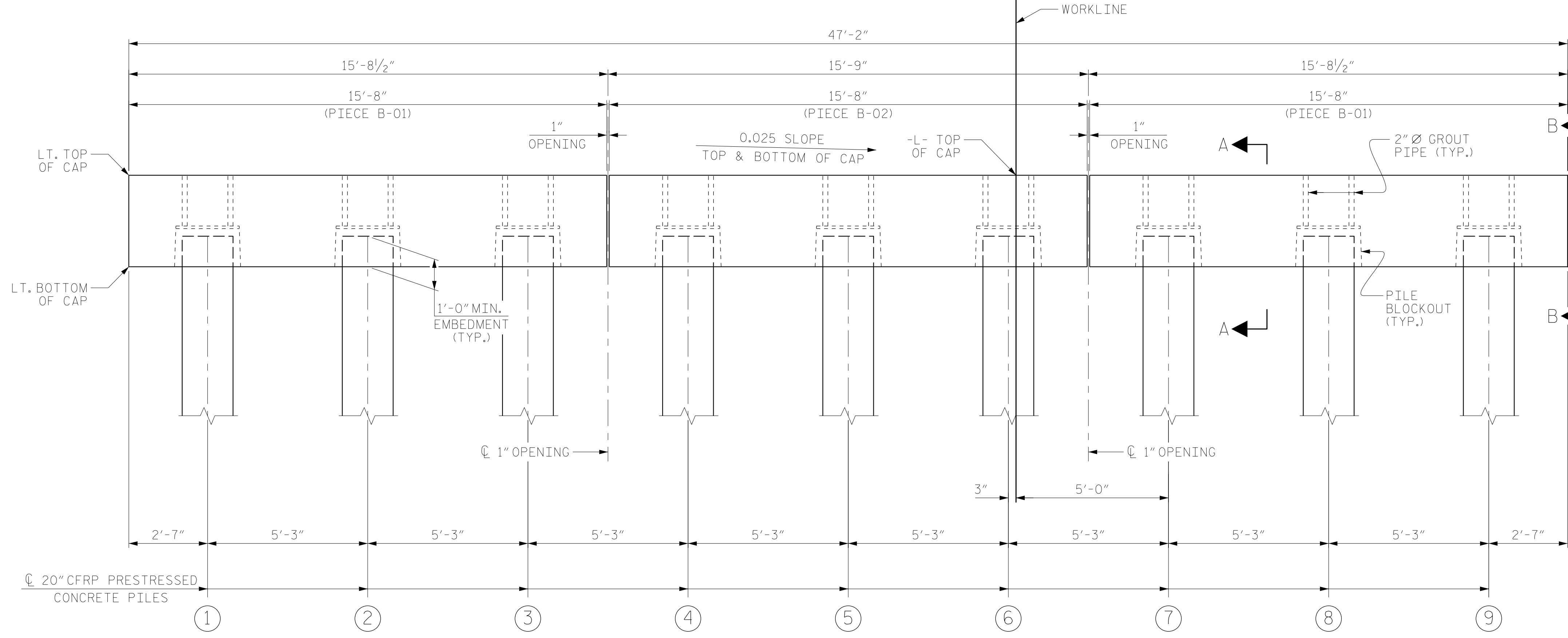
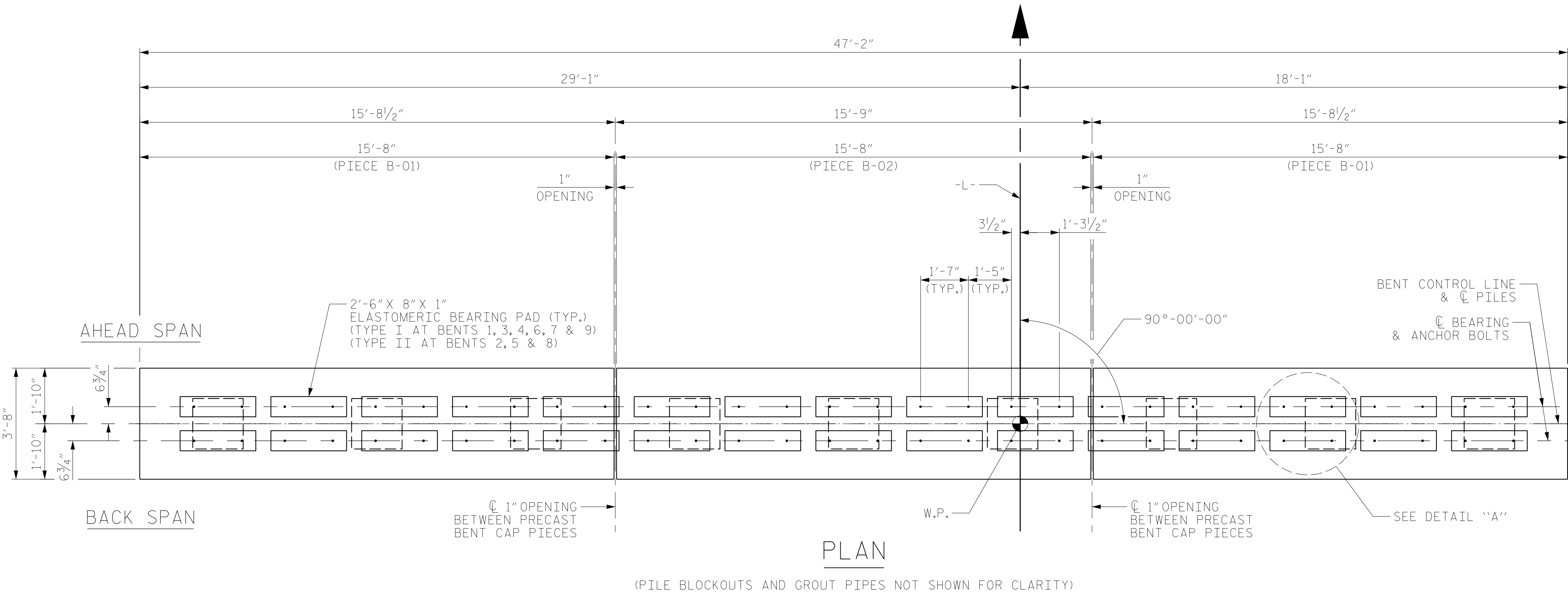


NOTES

FOR PRECAST CAP DETAILS AND BILL OF MATERIAL, SEE "PRECAST PIECE B-01" AND "PRECAST PIECE B-02" SHEETS.
 FOR GROUT FOR STRUCTURES, SEE SPECIAL PROVISIONS.
 FOR 3'-8" x 3'-0" PRESTRESSED CONCRETE BENT CAPS, SEE SPECIAL PROVISIONS.

CAP ELEVATIONS					
BENT NO.	LT. BOT. OF CAP	LT. TOP OF CAP	-L- TOP OF CAP	RT. TOP OF CAP	RT. BOT. OF CAP
1	9.46'	12.46'	11.73'	11.28'	8.28'
2	9.88'	12.88'	12.15'	11.70'	8.70'
3	10.22'	13.22'	12.49'	12.04'	9.04'
4	10.40'	13.40'	12.67'	12.22'	9.22'
5	10.41'	13.41'	12.68'	12.23'	9.23'
6	10.26'	13.26'	12.53'	12.08'	9.08'
7	9.98'	12.98'	12.25'	11.80'	8.80'
8	9.59'	12.59'	11.86'	11.41'	8.41'
9	9.21'	12.21'	11.48'	11.03'	8.03'

TOP OF PILE ELEVATIONS									
PILE NO.	BENT 1	BENT 2	BENT 3	BENT 4	BENT 5	BENT 6	BENT 7	BENT 8	BENT 9
1	10.39'	10.81'	11.16'	11.33'	11.34'	11.19'	10.91'	10.53'	10.14'
2	10.26'	10.68'	11.03'	11.20'	11.21'	11.06'	10.78'	10.39'	10.01'
3	10.13'	10.55'	10.89'	11.07'	11.08'	10.93'	10.65'	10.26'	9.88'
4	10.00'	10.42'	10.76'	10.94'	10.95'	10.80'	10.51'	10.13'	9.75'
5	9.87'	10.29'	10.63'	10.81'	10.81'	10.67'	10.38'	10.00'	9.61'
6	9.74'	10.16'	10.50'	10.68'	10.68'	10.54'	10.25'	9.87'	9.48'
7	9.60'	10.02'	10.37'	10.55'	10.55'	10.41'	10.12'	9.74'	9.35'
8	9.47'	9.89'	10.24'	10.41'	10.42'	10.28'	9.99'	9.61'	9.22'
9	9.34'	9.76'	10.11'	10.28'	10.29'	10.14'	9.86'	9.48'	9.09'



PROJECT NO. BR-0160
 BRUNSWICK COUNTY
 STATION: 21+77.50 -L-



STATE OF NORTH CAROLINA
 DEPARTMENT OF TRANSPORTATION
 RALEIGH
 SUBSTRUCTURE
 ALTERNATE BENT OPTION
 PRECAST BENT
 BENT NO. 1 THRU 9

RS&H
 RS&H Architects-Engineers-Planners, Inc.
 8521 Six Forks Road, Suite 400
 Raleigh, NC 27615
 919-926-4100 FAX 919-846-9080
 www.rsandh.com
 North Carolina License No. 50737-0403-1-C&E

REVISIONS						SHEET NO.
NO.	BY:	DATE:	NO.	BY:	DATE:	S-35
1			3			TOTAL SHEETS 42
2			4			

DRAWN BY : MRA DATE : 01/2023
 CHECKED BY : MKO DATE : 01/2023
 DESIGN ENGINEER OF RECORD: RLB DATE : 03/2023

DOCUMENT NOT CONSIDERED
 FINAL UNLESS ALL
 SIGNATURES COMPLETED