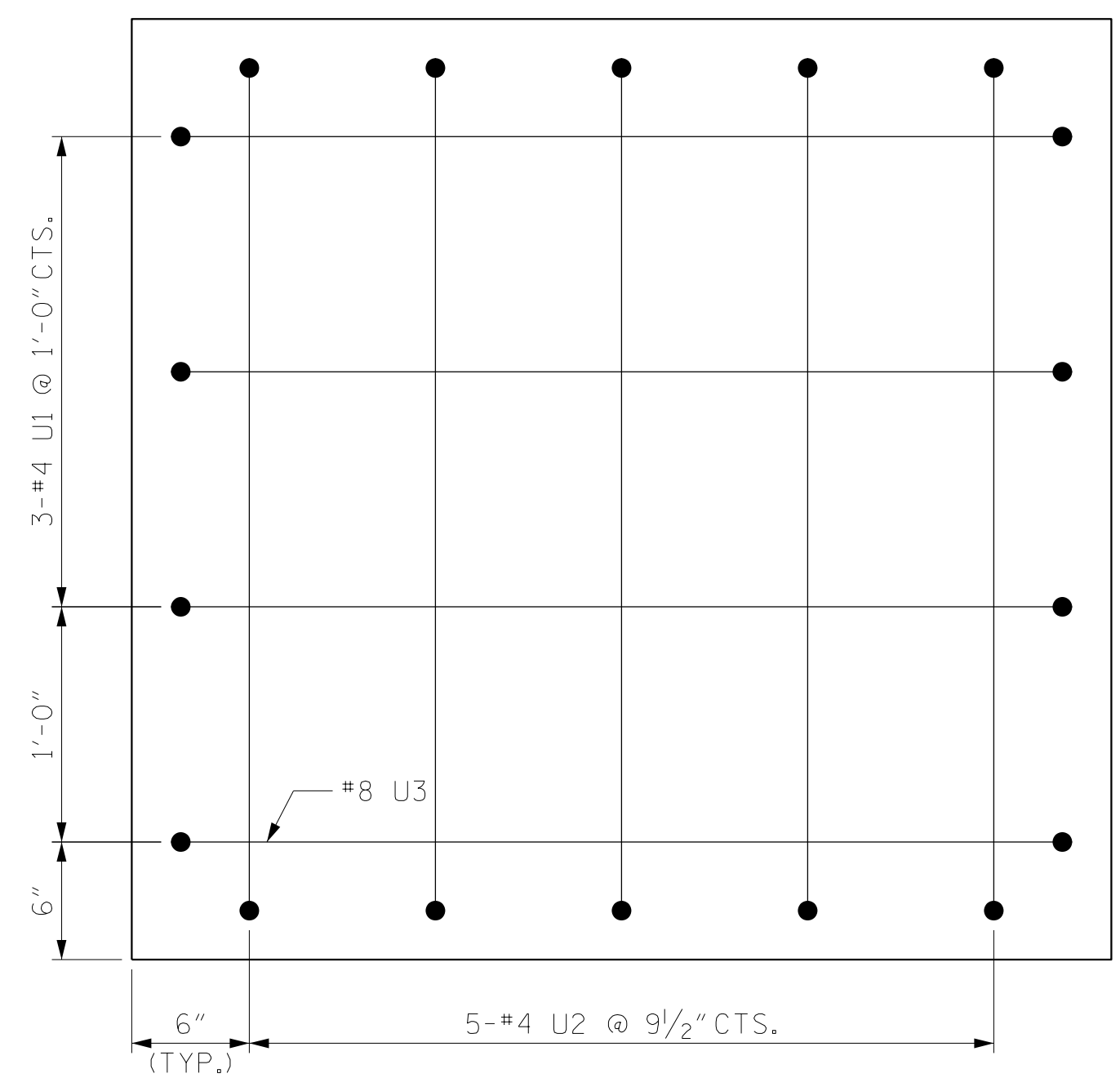


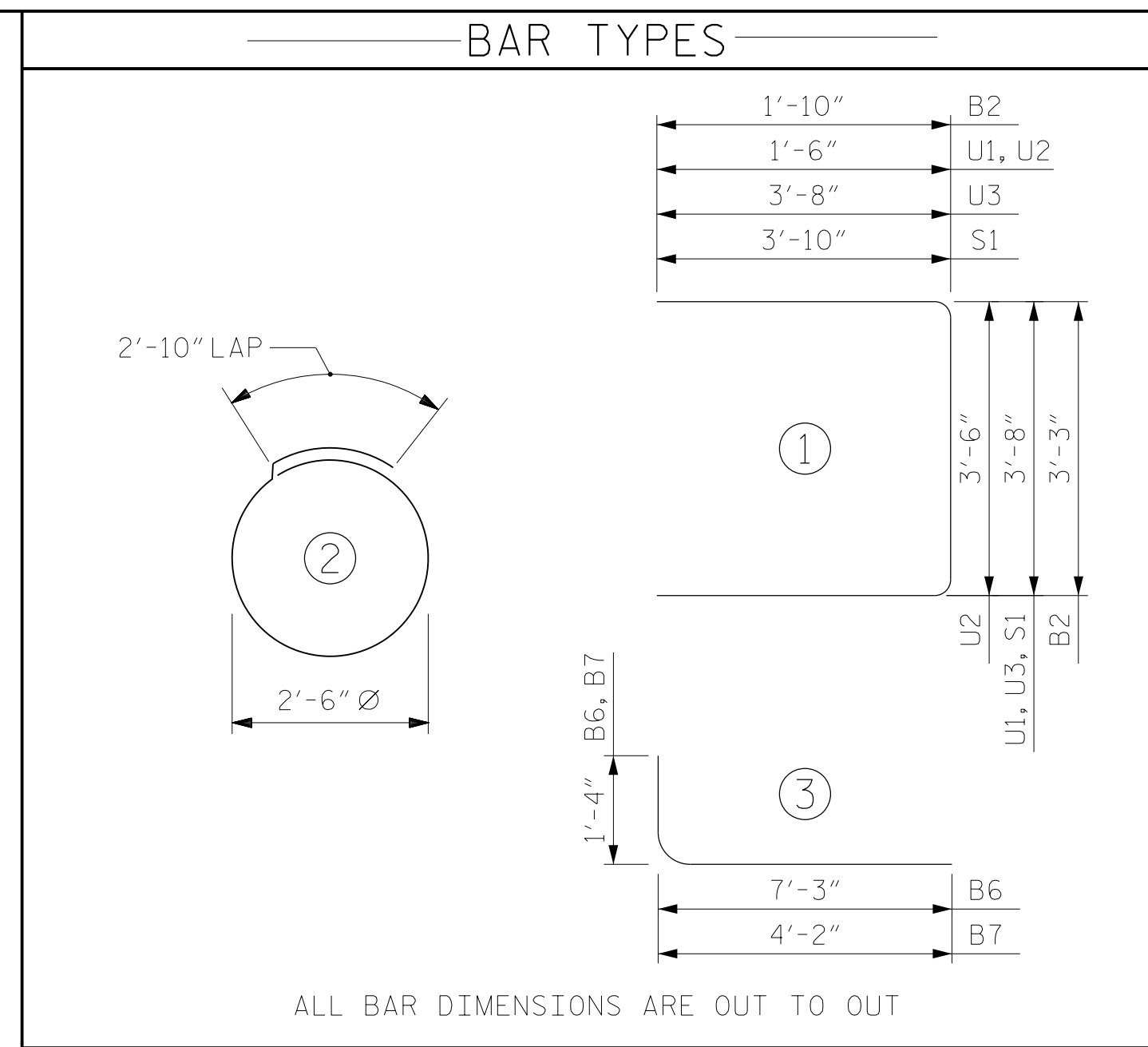
SECTION A-A



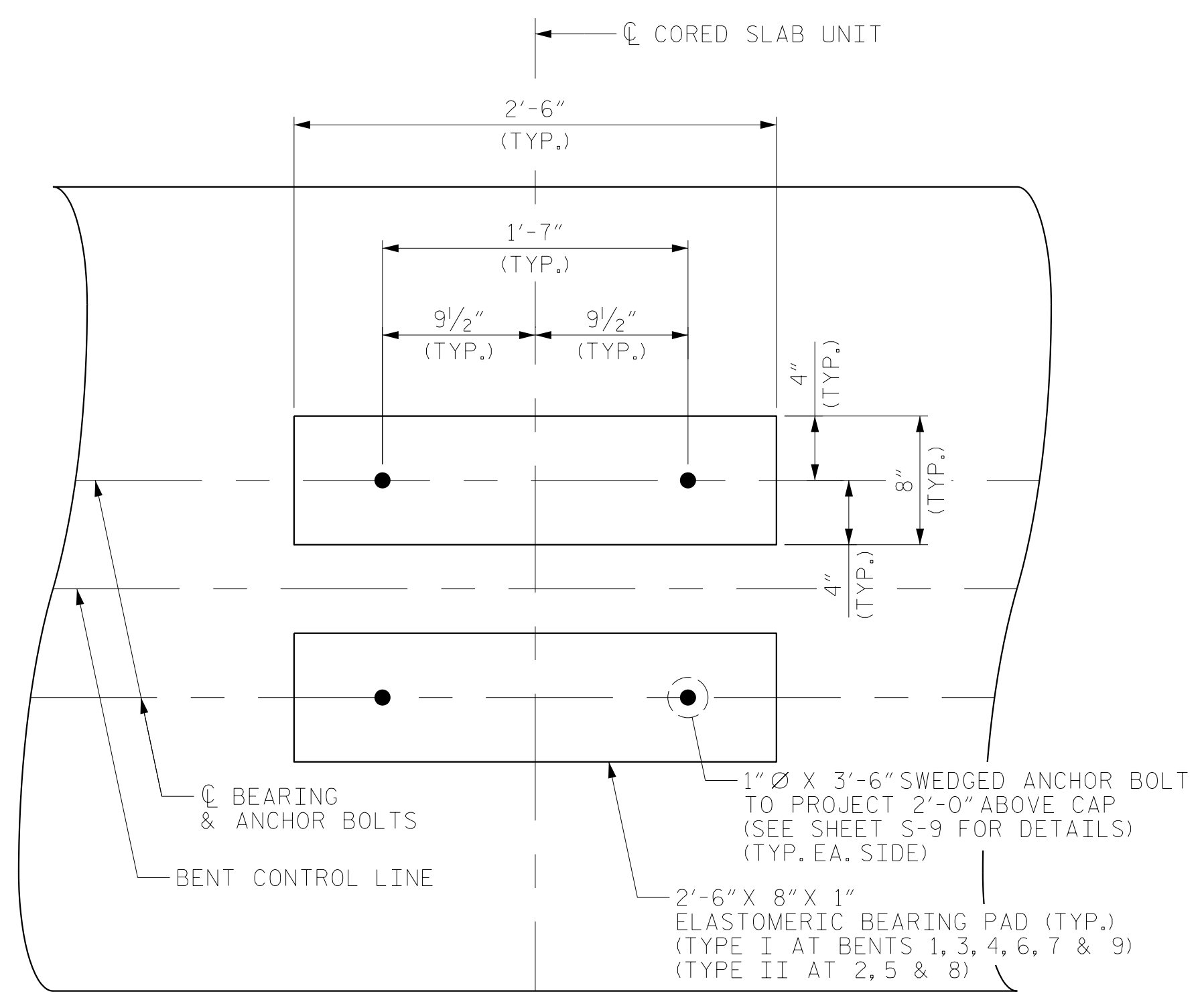
VIEW B-B

DRAWN BY :	MRA	DATE :	.01/2023
CHECKED BY :	MKO	DATE :	.01/2023
DESIGN ENGINEER OF RECORD:	RLB	DATE :	.03/2023

3/28/2023
 X:\P\1034226004.BR-0160 Brunswick 15\Design\Structures\CAD\401.067.BR0160.SMU.B.S-34.090015.dgn
 CuonyN



BILL OF MATERIAL					
FOR ONE BENT					
BAR	NO.	SIZE	TYPE	LENGTH	TOTAL LENGTH
B1	22	#8	STR	47'-2"	1037'-8"
B2	24	#5	1	6'-11"	166'-0"
B3	12	#8	STR	47'-2"	566'-0"
B4	4	#5	STR	47'-2"	188'-8"
B5	22	#5	STR	3'-10"	84'-4"
B6	20	#8	3	8'-7"	171'-8"
B7	24	#8	3	5'-6"	132'-0"
S1	128	#5	1	11'-4"	1450'-8"
S2	36	#5	2	10'-9"	387'-0"
U1	6	#4	1	6'-8"	40'-0"
U2	10	#4	1	6'-6"	65'-0"
U3	2	#8	1	11'-0"	22'-0"
TOTAL LIN. FT. #4 BARS				105.0 LIN. FT.	
TOTAL LIN. FT. #5 BARS				2276.7 LIN. FT.	
TOTAL LIN. FT. #8 BARS				1929.3 LIN. FT.	
GLASS FIBER REINFORCED POLYMER BARS				4311.0 LIN. FT.	
CLASS AA CONCRETE BREAKDOWN					
POUR #1 (CAP)				27.5 C.Y.	
TOTAL CLASS AA CONCRETE				27.5 C.Y.	



DETAIL "A"

DIMENSIONS ARE TYPICAL FOR EACH CORED SLAB UNIT.
 PILES NOT SHOWN FOR CLARITY.

PROJECT NO. BR-0160
BRUNSWICK COUNTY
 STATION: 21+77.50 -L-

SHEET 2 OF 2



STATE OF NORTH CAROLINA					
DEPARTMENT OF TRANSPORTATION					
RALEIGH					
SUBSTRUCTURE					
BENT NO. 1 THRU 9					
REVISIONS					
NO.	BY:	DATE:	NO.	BY:	DATE:
1			3		
2			4		
SHEET NO.					S-34
TOTAL SHEETS					42

DOCUMENT NOT CONSIDERED FINAL UNLESS ALL SIGNATURES COMPLETED

RS&H Architects-Engineers-Planners, Inc.
 8521 Six Forks Road, Suite 400
 Raleigh, NC 27615
 919-926-4100 FAX 919-846-9080
 www.rsandh.com
 North Carolina License Nos. 50737-F-0403-C-08