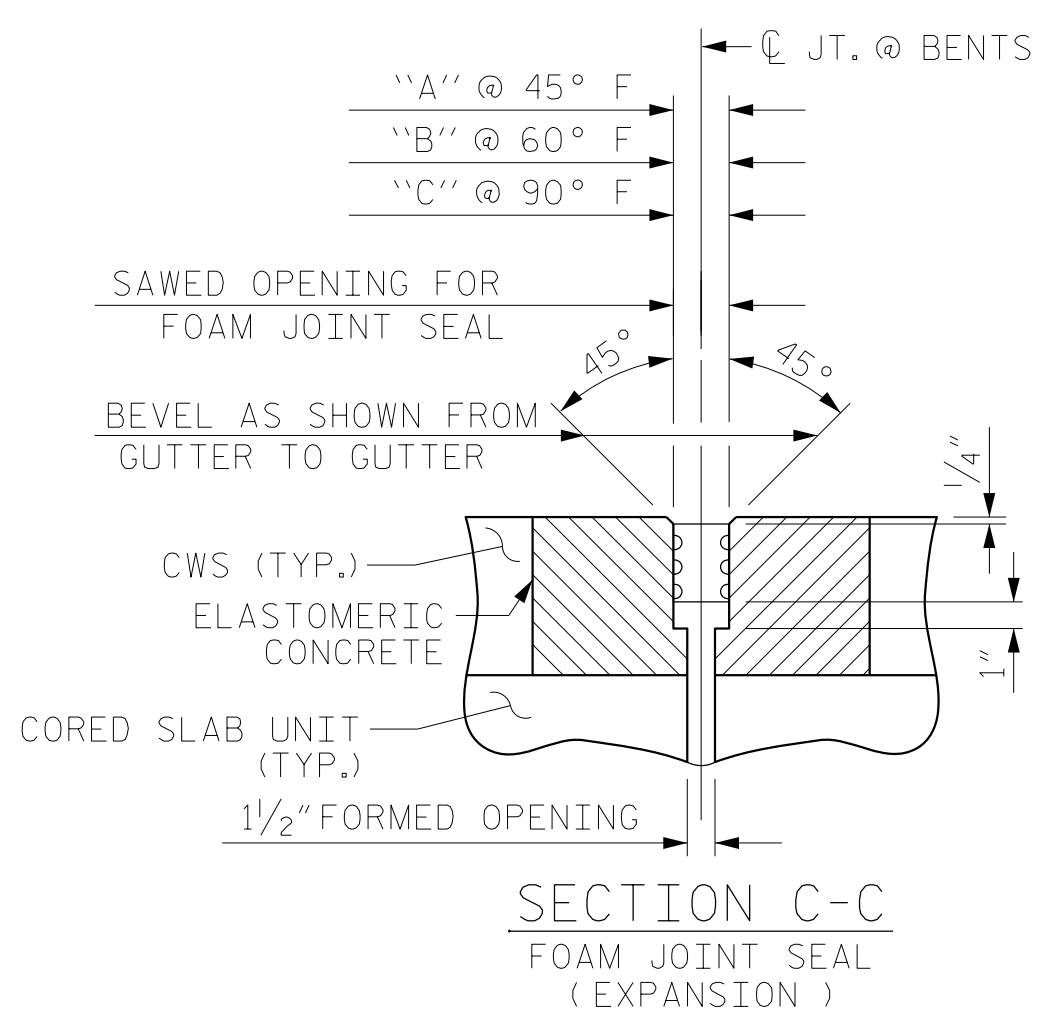
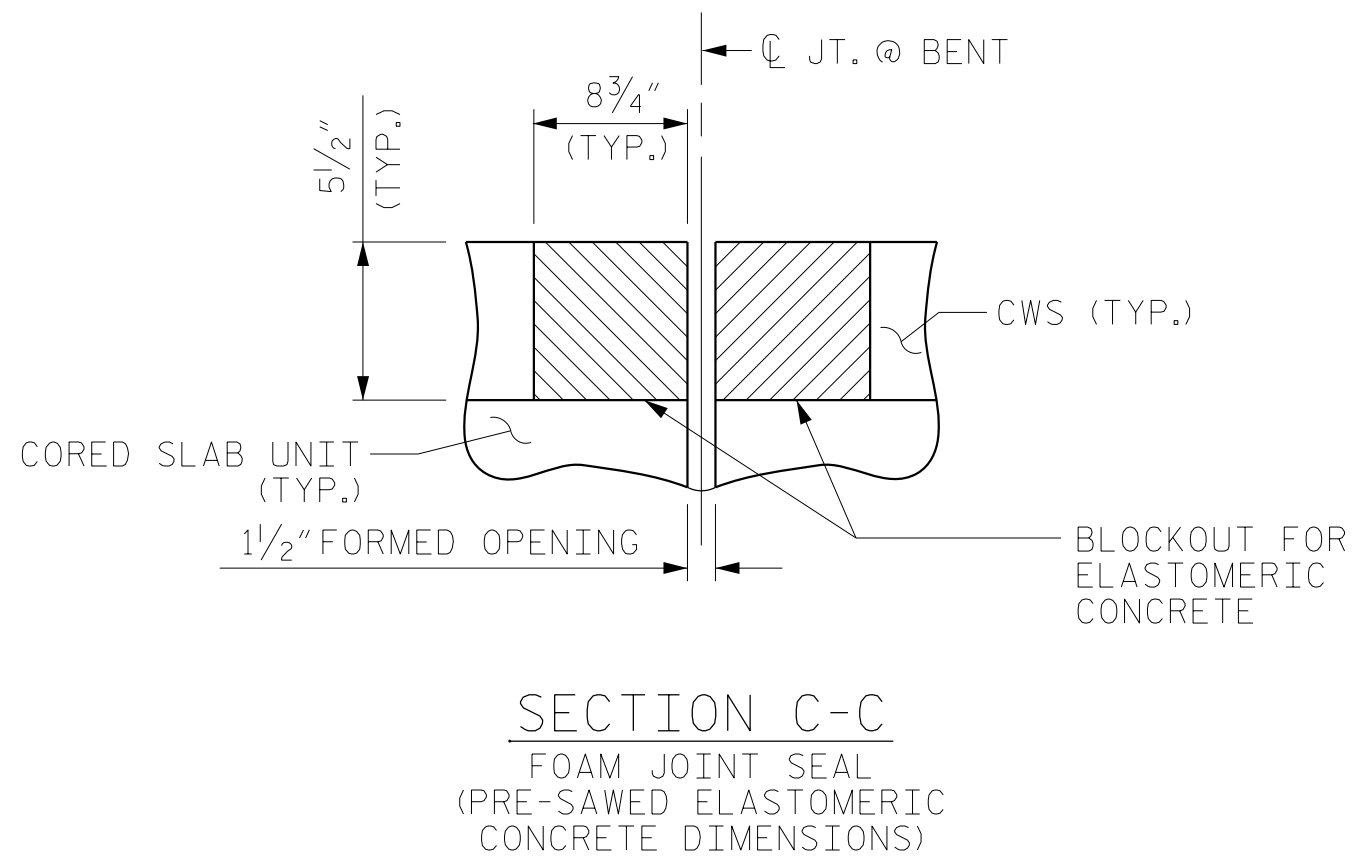


NOTES:
 THE JOINTS SHALL BE SAWED AFTER PLACEMENT OF THE CONCRETE WEARING SURFACE (CWS).
 FOR FOAM JOINT SEALS, SEE SPECIAL PROVISIONS.
 FOR ELASTOMERIC CONCRETE, SEE SPECIAL PROVISIONS.
 FOR FOAM JOINT SEAL AT END BENTS, SEE BRIDGE APPROACH SLABS.
 THE NOMINAL UNCOMPRESSED SEAL WIDTH OF THE FOAM JOINT SEAL SHALL BE 3".



JOINT OPENINGS			
BENT NO.	"A"	"B"	"C"
2	2 1/2"	2 5/16"	2"
5	2 1/2"	2 5/16"	1 5/16"
8	2 7/16"	2 5/16"	2"

ELASTOMERIC CONCRETE	
BENT NO.	ELASTOMERIC CONCRETE * (CU. FT.)
2	27.7
5	27.7
8	27.7
TOTAL	83.1

* BASED ON THE MINIMUM BLOCKOUT SHOWN.

PROJECT NO. BR-0160
BRUNSWICK COUNTY
 STATION: 21+77.50 -L-

JOINT SEAL DETAILS @ BENTS

FOAM JOINT SEAL TO BE CUT, HEAT WELDED AND TURNED UP PARALLEL TO SLOPED FACE OF THE CURB.

DRAWN BY : NSC DATE : .01/2022
 CHECKED BY : MRA DATE : .01/2023
 DESIGN ENGINEER OF RECORD: RLB DATE : .03/2023

DOCUMENT NOT CONSIDERED FINAL UNLESS ALL SIGNATURES COMPLETED



STATE OF NORTH CAROLINA
 DEPARTMENT OF TRANSPORTATION
 RALEIGH

FOAM JOINT DETAILS AT BENT

REVISIONS						SHEET NO.
NO.	BY:	DATE:	NO.	BY:	DATE:	S-28
1			3			TOTAL SHEETS
2			4			42

RS&H Architects-Engineers-Planners, Inc.
 8521 Six Forks Road, Suite 400
 Raleigh, NC 27615
 919-926-4100 FAX 919-846-9080
 www.rsandh.com
 North Carolina License No. 50737-F-0403-C-28