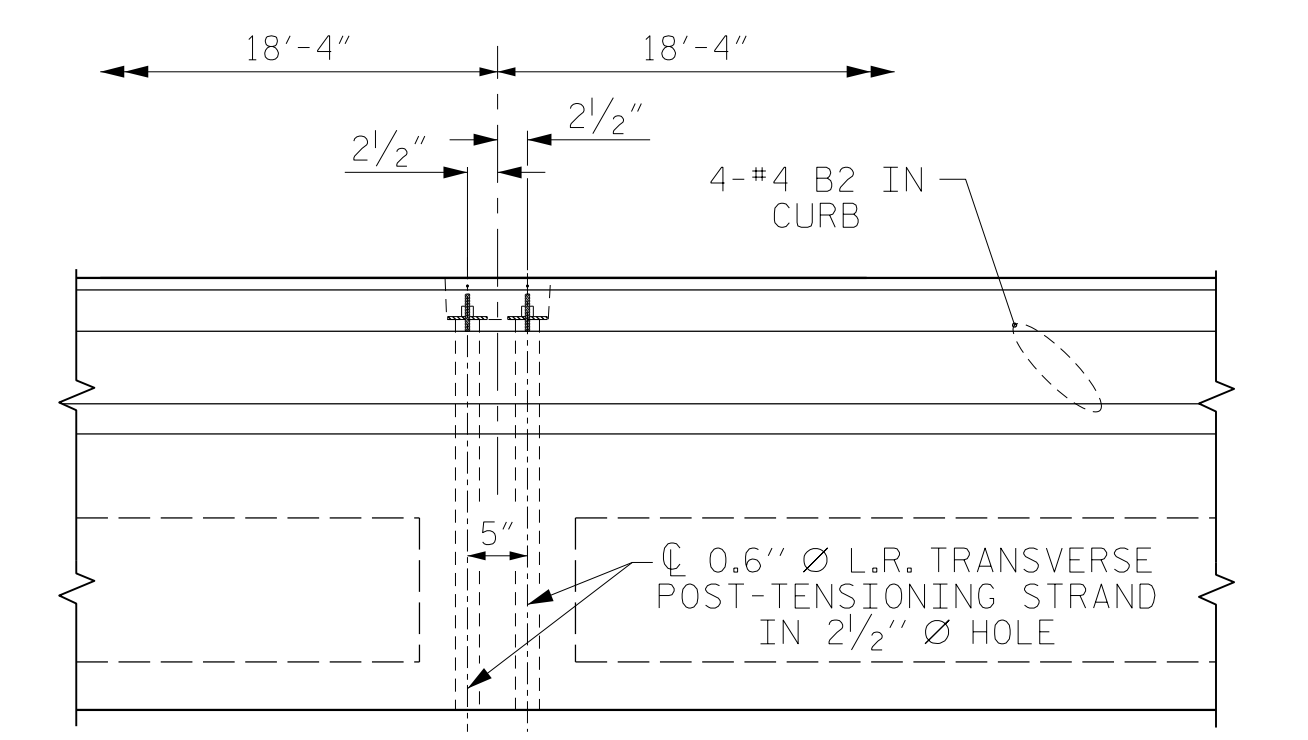


DETAIL 'D'
 MODIFIED INTERIOR SLAB SECTION SHOWN, TYPICAL INTERIOR SLAB SECTION SIMILAR EXCEPT OMIT #5 S12 BARS. (TYP. EA. END OF UNIT)



DETAIL 'E'
 #4 S11 BARS MAY BE SHIFTED AS NECESSARY TO MAINTAIN 1" CLEAR TO GROUDED RECESS AND 2 1/2" Ø TRANSVERSE POST-TENSIONING STRAND HOLES

S3 BAR SPACING		
BAR SPACING	BAR	NUMBER OF SPACES
F1	EQUAL	3
F2	10 1/2"	2
F3	1'-0"	5
F4	1'-0"	4
F5	8"	2
F6	7"	2
F7	11"	3
F8	11 1/4"	4
F9	6 1/2"	2
F10	EQUAL	9
F11	EQUAL	8

NOTES:
 FOR GROUDED RECESS DETAILS, SEE SHEET 1 OF 16.
 FOR DETAIL 'G', SEE SHEET 3 OF 16.
 FOR ADDITIONAL S11 BARS IN EXTERIOR UNITS, SEE SIDE VIEW AT POST LOCATION DETAIL ON SHEET 3 OF 16.
 BLOCKOUTS FOR ANCHOR BOLTS NOT SHOWN FOR CLARITY.
 THE #4 'B' BARS IN THE CURB MAY BE FIELD CUT TO AVOID DRAIN BLOCKOUTS.

SPAN F
 ** = 1'-6"

PROJECT NO. BR-0160
BRUNSWICK COUNTY
 STATION: 21+77.50 -L-

SHEET 7 OF 16

RS&H
 RS&H Architects-Engineers-Planners, Inc.
 8521 Six Forks Road, Suite 400
 Raleigh, NC 27615
 919-926-4100 FAX 919-846-9080
 www.rsandh.com
 North Carolina License No. 50737-2-0403-1-C&B

REVISIONS						SHEET NO.
NO.	BY:	DATE:	NO.	BY:	DATE:	S-15
1			3			TOTAL SHEETS
2			4			42

DOCUMENT NOT CONSIDERED FINAL UNLESS ALL SIGNATURES COMPLETED

DRAWN BY : MRA DATE : 02/2023
 CHECKED BY : MKO DATE : 02/2023
 DESIGN ENGINEER OF RECORD: RLB DATE : 03/2023