

8/17/99

INSTALL 10" WATER LINE...476LF
INSTALL 10" WATER LINE BY HORIZONTAL
DIRECTIONAL DRILLING (HDD)
HDPE (SDR-9)

INSTALL 1" SERVICE LINE...12 LF
ADD TAPPING SADDLE & CORP STOP

INSTALL FIRE HYDRANT LEG...18LF
PVC (C-900)
8" X 6" SWIVEL HYDRANT TEE BRANCH
-WL- STA. 24+01
8" 11.25° R.J. DI BEND (HORZ.)
-WL- STA. 23+76

DOCUMENT NOT CONSIDERED FINAL
UNLESS ALL SIGNATURES COMPLETED

PROJECT REFERENCE NO.	SHEET NO.
BR-0160	UC-5
DESIGNED BY: ARV	
DRAWN BY: BJF	
CHECKED BY: RLB	
APPROVED BY:	
REVISED:	
NORTH CAROLINA DEPARTMENT OF TRANSPORTATION	
UTILITIES ENGINEERING SEC. PHONE: (919) 707-6690 FAX: (919) 250-4151	
UTILITY CONSTRUCTION PLANS ONLY	

MATCHLINE SHEET UC-4 -L- STA. 21+00.00

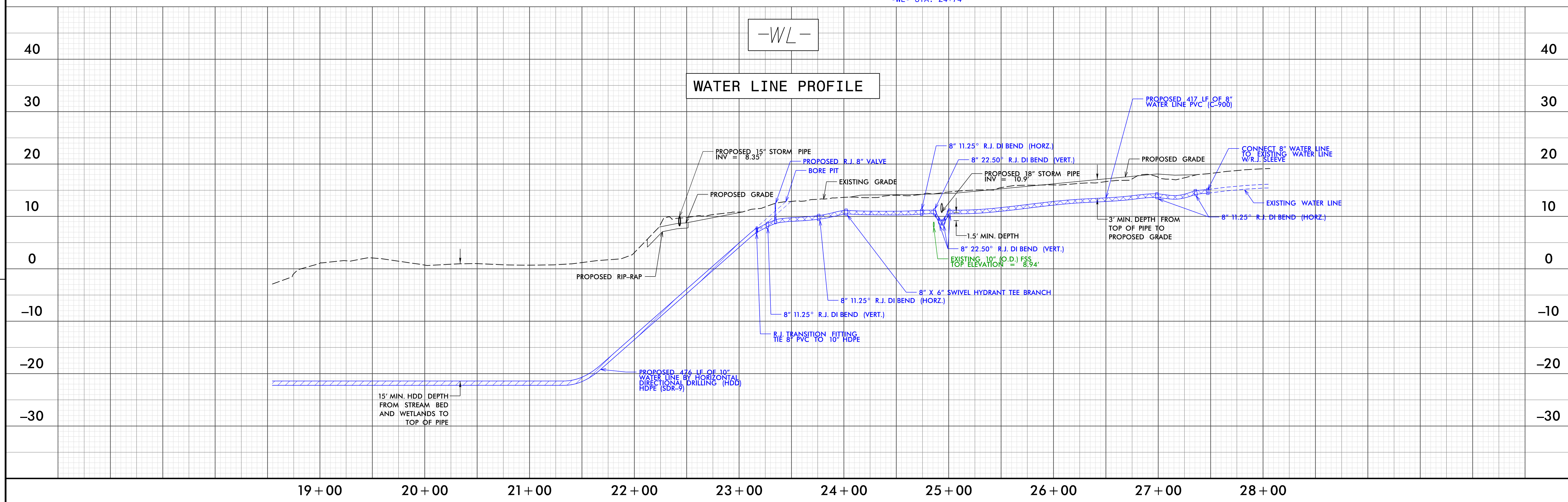
NOTE: PRIOR TO COMMENCING ANY WORK ON ANY TRENCHLESS INSTALLATION ON THIS PROJECT, PROVIDE A DESIGN FOR THE TRENCHLESS INSTALLATION CERTIFIED BY AN ENGINEER LICENSED BY THE STATE OF NORTH CAROLINA, AS REQUIRED BY SUBARTICLE 1550-3(B) OF THE STANDARD SPECIFICATIONS.

NOTE: SOME OF THE MATERIALS DETAILED ON THIS SHEET WILL BE PROVIDED BY NCDOT. SEE UC SPECIAL PROVISION 'MATERIALS PROVIDED BY NCDOT'.

SEE SHEET UC-7 FOR NOTES ON RESIDENTIAL GRAVITY SEWER LOCATES PERTAINING TO WATERLINE INSTALLATION.

UTILITY CONSTRUCTION
RS&H
8521 SIX FORKS ROAD, SUITE 400
RALEIGH, NC 27615
NC FIRM LICENSE No. F-0493

NAD 83/NA 2011



REVISIONS