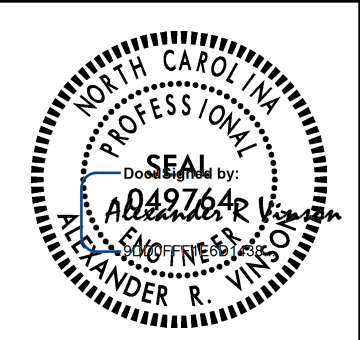
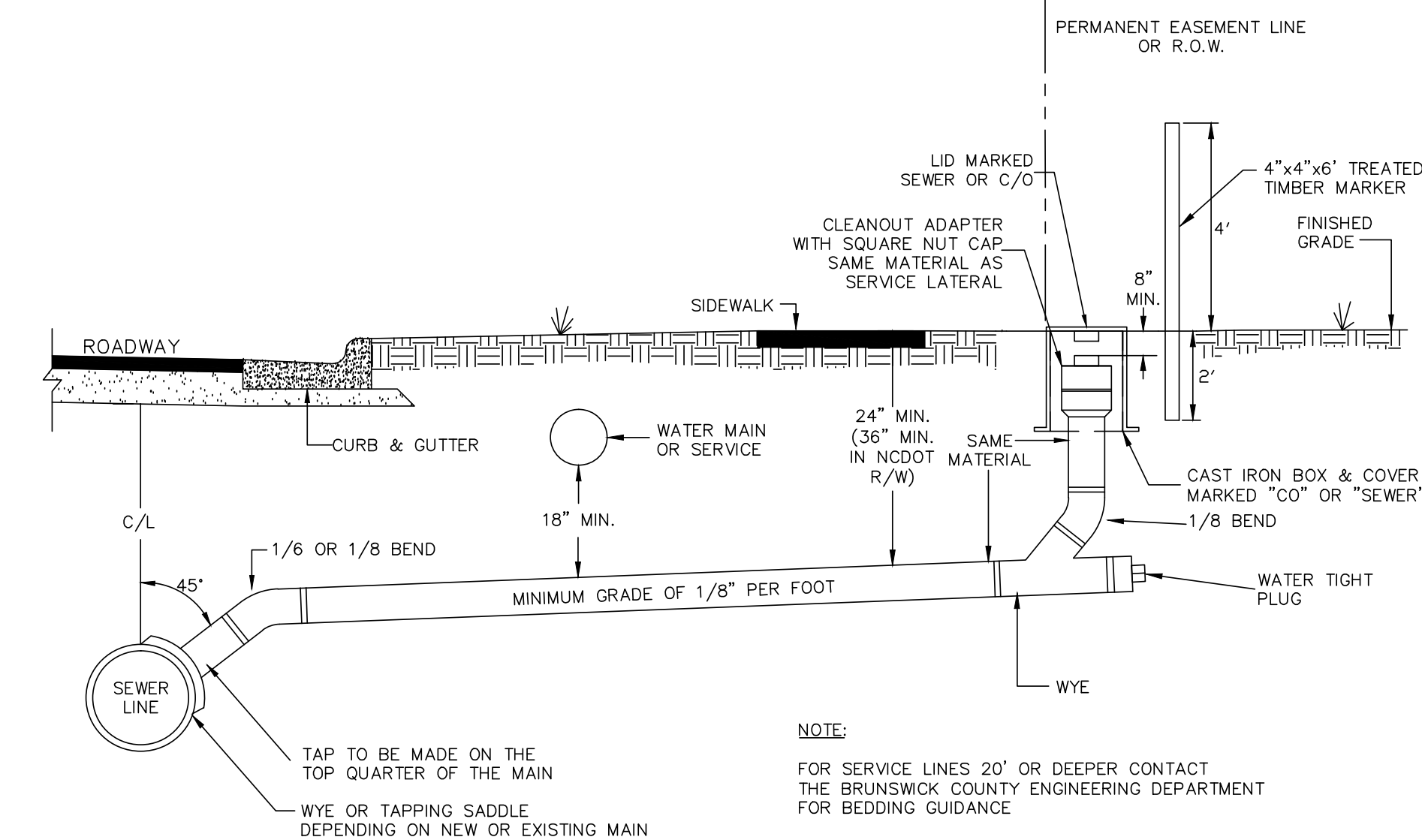
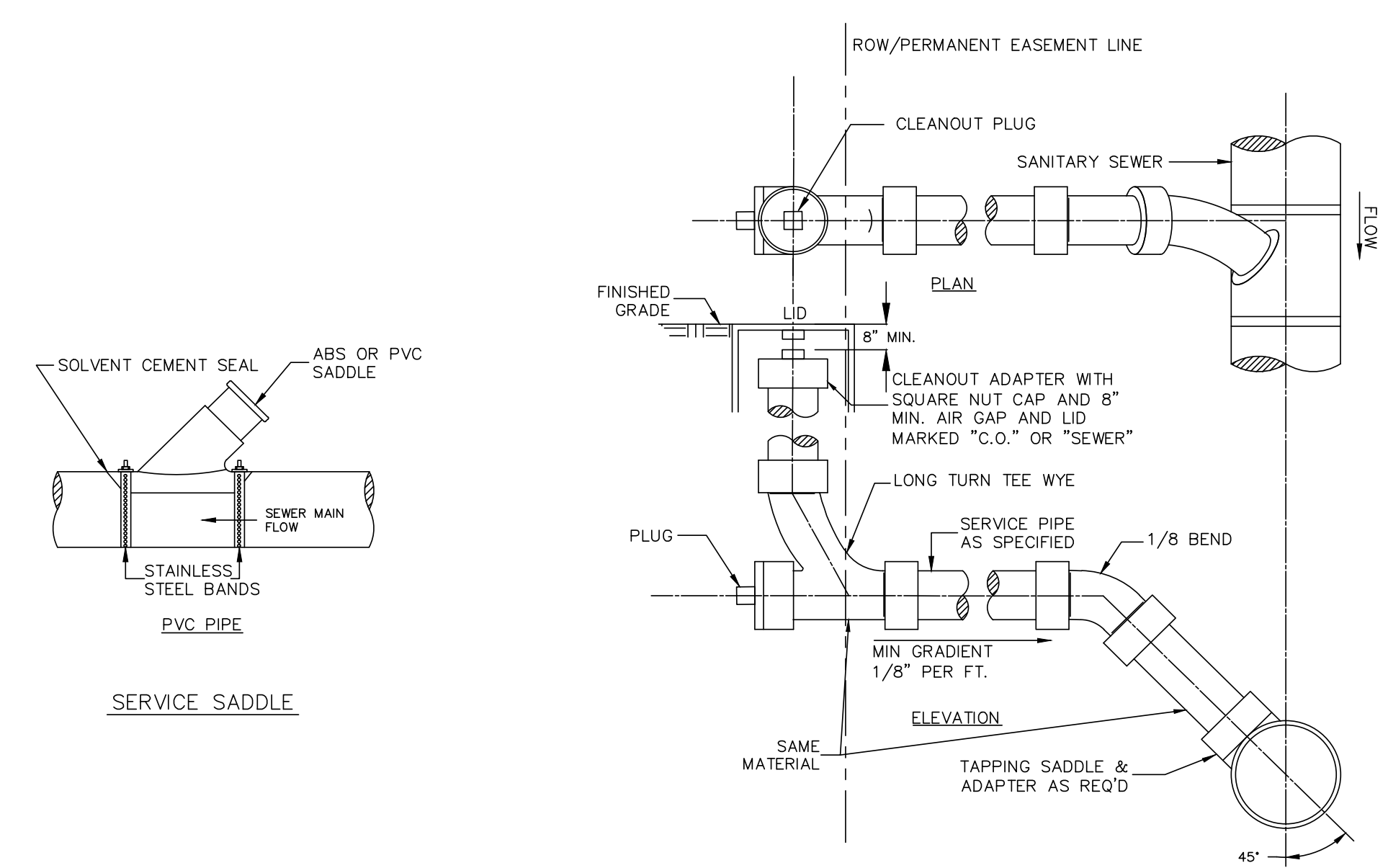


PROJECT REFERENCE NO.	SHEET NO.
BR-0160	UC-3A
DESIGNED BY: ARV	
DRAWN BY: ARV	
CHECKED BY: RLB	
APPROVED BY:	
REVISED:	
NORTH CAROLINA DEPARTMENT OF TRANSPORTATION	
UTILITIES ENGINEERING SEC. PHONE: (919) 707-6690 FAX: (919) 250-4151	UTILITY CONSTRUCTION PLANS ONLY

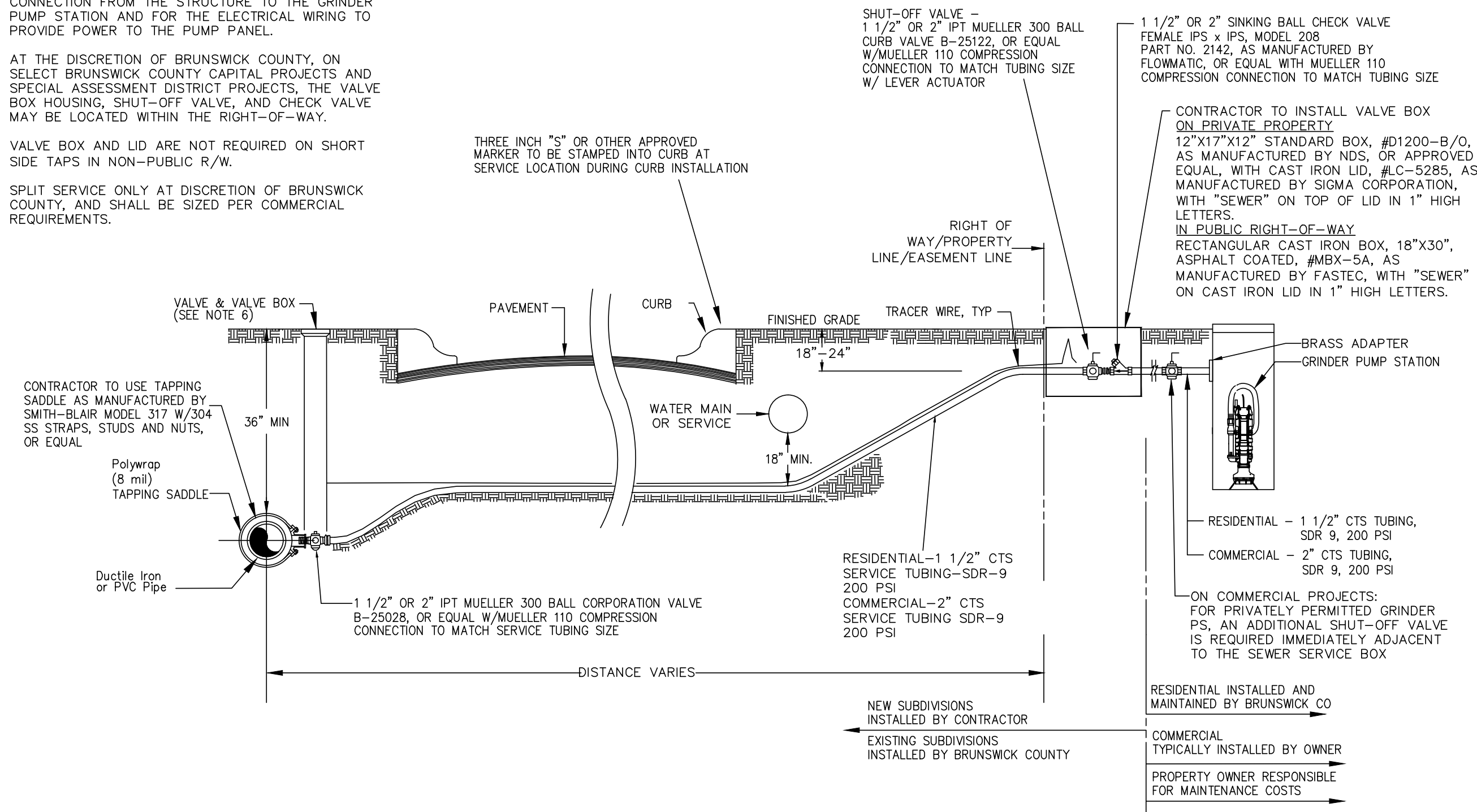
PROJECT TYPICAL DETAILS

UTILITY CONSTRUCTION

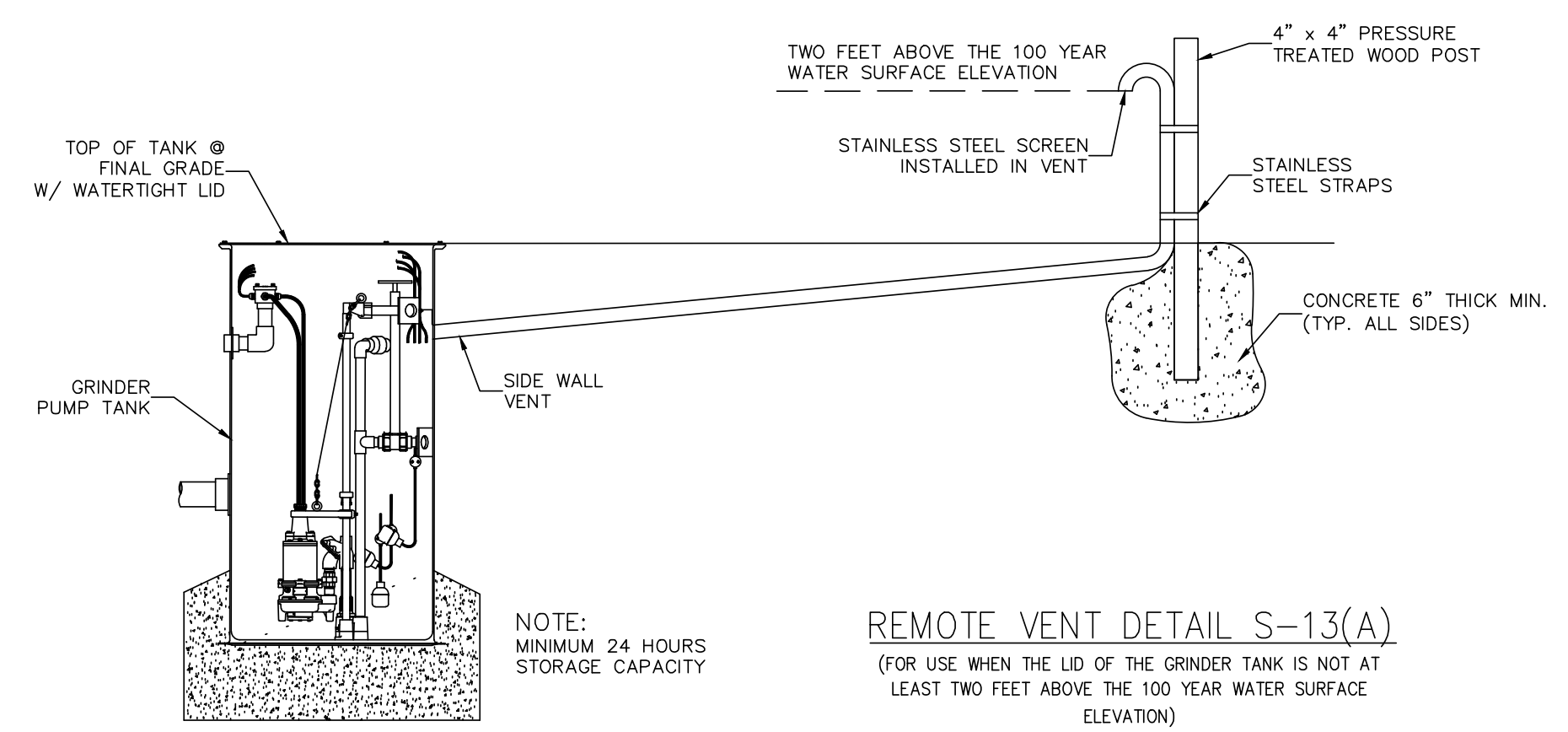


SANITARY SEWER TAPS & SERVICE LATERALS
DETAIL S-11

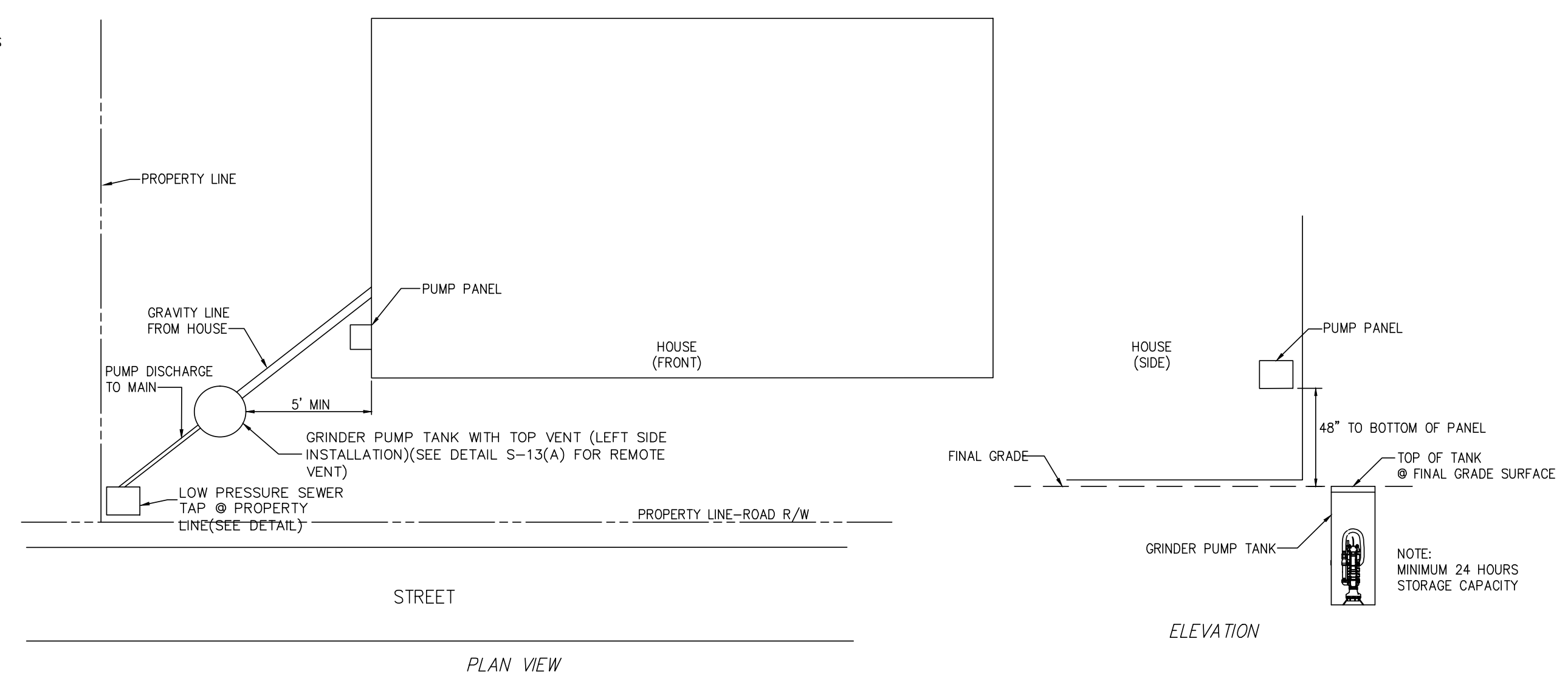
- NOTES:
- ALL TAPS WILL BE MADE IN ACCORDANCE WITH BRUNSWICK COUNTY SPECIFICATIONS AND AWWA GUIDELINE "ANSI/AWWA C600-93" OR LATEST REVISION FOR TAPPING THROUGH POLYETHYLENE ENCASEMENT.
 - ALL MATERIAL TO COMPLY WITH BRUNSWICK COUNTY SPECIFICATIONS.
 - TRACER WIRE SHALL BE INSTALLED FROM THE FORCE MAIN TO THE VALVE BOX.
 - THE HOMEOWNER IS RESPONSIBLE FOR THE GRAVITY CONNECTION FROM THE STRUCTURE TO THE GRINDER PUMP STATION AND FOR THE ELECTRICAL WIRING TO PROVIDE POWER TO THE PUMP PANEL.
 - AT THE DISCRETION OF BRUNSWICK COUNTY, ON SELECT BRUNSWICK COUNTY CAPITAL PROJECTS AND SPECIAL ASSESSMENT DISTRICT PROJECTS, THE VALVE BOX HOUSING, SHUT-OFF VALVE, AND CHECK VALVE MAY BE LOCATED WITHIN THE RIGHT-OF-WAY.
 - VALVE BOX AND LID ARE NOT REQUIRED ON SHORT SIDE TAPS IN NON-PUBLIC R/W.
 - SPLIT SERVICE ONLY AT DISCRETION OF BRUNSWICK COUNTY, AND SHALL BE SIZED PER COMMERCIAL REQUIREMENTS.



LOW PRESSURE SEWER CONNECTION
DETAIL S-12



REMOTE VENT DETAIL S-13(A)
(FOR USE WHEN THE LID OF THE GRINDER TANK IS NOT AT LEAST TWO FEET ABOVE THE 100 YEAR WATER SURFACE ELEVATION)



TYPICAL RESIDENTIAL GRINDER PUMP STATION LOCATION
DETAIL S-13

07-DEC-2021 14:21
 R:\Utilities\Projects\Engineering\UC\Proj\BR-0160_UC_details.dgn
 \$\$\$USERNAME\$\$\$