
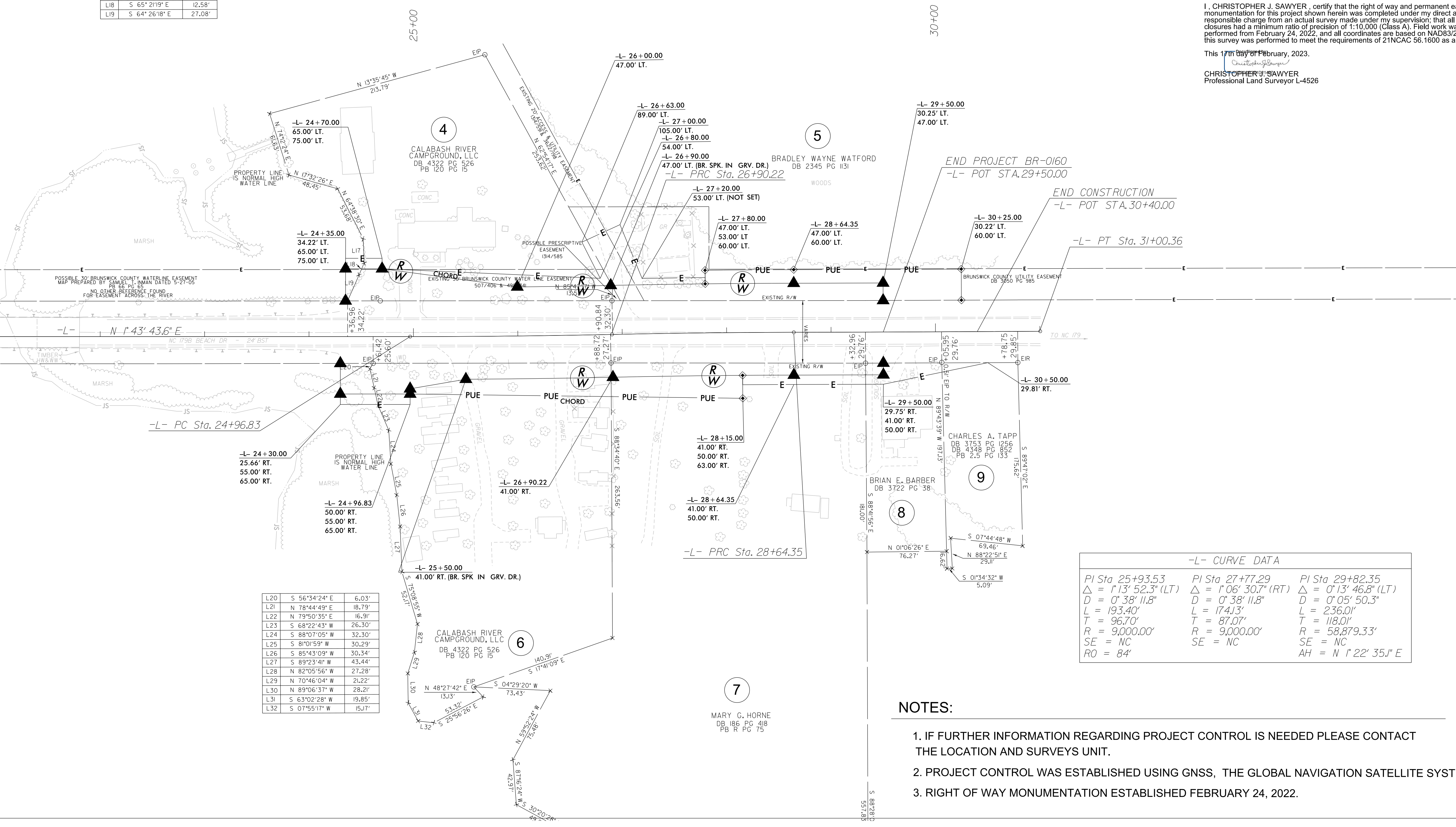


PROJECT REFERENCE NO.	SHEET NO.
BR-0160	RW05
Location and Surveys	
LOCATION AND SURVEYS UNIT DIVISION 3 5310 BARBADOS BLVD., SUITE 102 CASTLE HAYNE, N.C. 28429	
PROJECT SURVEYOR	
	
DOCUMENT NOT CONSIDERED FINAL UNLESS ALL SIGNATURES COMPLETED	

NAD 83/NA 2011

L17	N 89° 24' 55" E	23.27'
L18	S 65° 21' 19" E	12.58'
L19	S 64° 26' 18" E	27.08'

MATCHLINE SHEET 4 -L- STA. 21+00.00



L20	S 56°34'24" E	6.03'
L21	N 78°44'49" E	18.79'
L22	N 79°50'35" E	16.91'
L23	S 68°22'43" W	26.30'
L24	S 88°07'05" W	32.30'
L25	S 81°01'59" W	30.29'
L26	S 85°43'09" W	30.34'
L27	S 89°23'41" W	43.44'
L28	N 82°05'56" W	27.28'
L29	N 70°46'04" W	21.22'
L30	N 89°06'37" W	28.21'
L31	S 63°02'28" W	19.85'
L32	S 07°55'17" W	15.17'

-L- CURVE DATA		
PI Sta 25+93.53	PI Sta 27+77.29	PI Sta 29+82.35
$\Delta = 1°13' 52.3" (LT)$	$\Delta = 1°06' 30.7" (RT)$	$\Delta = 0°13' 46.8" (LT)$
$D = 0°38' 11.8"$	$D = 0°38' 11.8"$	$D = 0°05' 50.3"$
$L = 193.40'$	$L = 174.13'$	$L = 236.01'$
$T = 96.70'$	$T = 87.07'$	$T = 118.01'$
$R = 9,000.00'$	$R = 9,000.00'$	$R = 58,879.33'$
$SE = NC$	$SE = NC$	$SE = NC$
$RO = 84'$		$AH = N 1°22' 35.1" E$

I, CHRISTOPHER J. SAWYER, certify that the right of way and permanent easement monumentation for this project shown herein was completed under my direct and responsible charge from an actual survey made under my supervision; that all horizontal closures had a minimum ratio of precision of 1:10,000 (Class A). Field work was performed from February 24, 2022, and all coordinates are based on NAD83/2011. That this survey was performed to meet the requirements of 21NCAC 56.1600 as applicable.

This 17th day of February, 2023.

Christopher Sawyer
 CHRISTOPHER J. SAWYER
 Professional Land Surveyor L-4526

NOTES:

1. IF FURTHER INFORMATION REGARDING PROJECT CONTROL IS NEEDED PLEASE CONTACT THE LOCATION AND SURVEYS UNIT.
2. PROJECT CONTROL WAS ESTABLISHED USING GNSS, THE GLOBAL NAVIGATION SATELLITE SYSTEM.
3. RIGHT OF WAY MONUMENTATION ESTABLISHED FEBRUARY 24, 2022.

REVISIONS

22-FEB-2023 10:40:00 Projects\BRIDGE\BR-0160\0015\Working\Control Sheets\BR0160.LS.RW05-230215.dgn
 m.juliana