

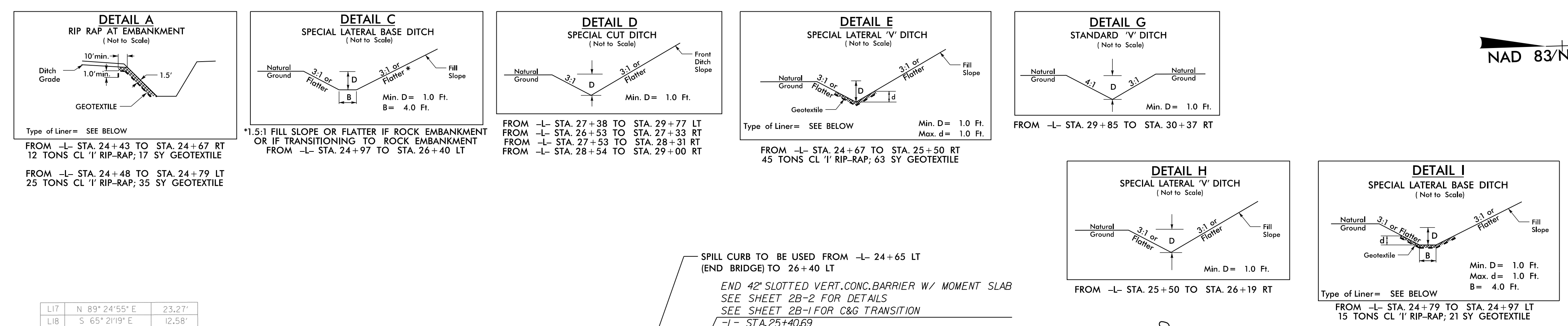
8/17/2023

PROJECT REFERENCE NO. <i>BR-0160</i>	SHEET NO. <i>5</i>
RW SHEET NO.	
ROADWAY DESIGN ENGINEER	HYDRAULICS ENGINEER

**DOCUMENT NOT CONSIDERED FINAL UNLESS ALL SIGNATURES COMPLETED**

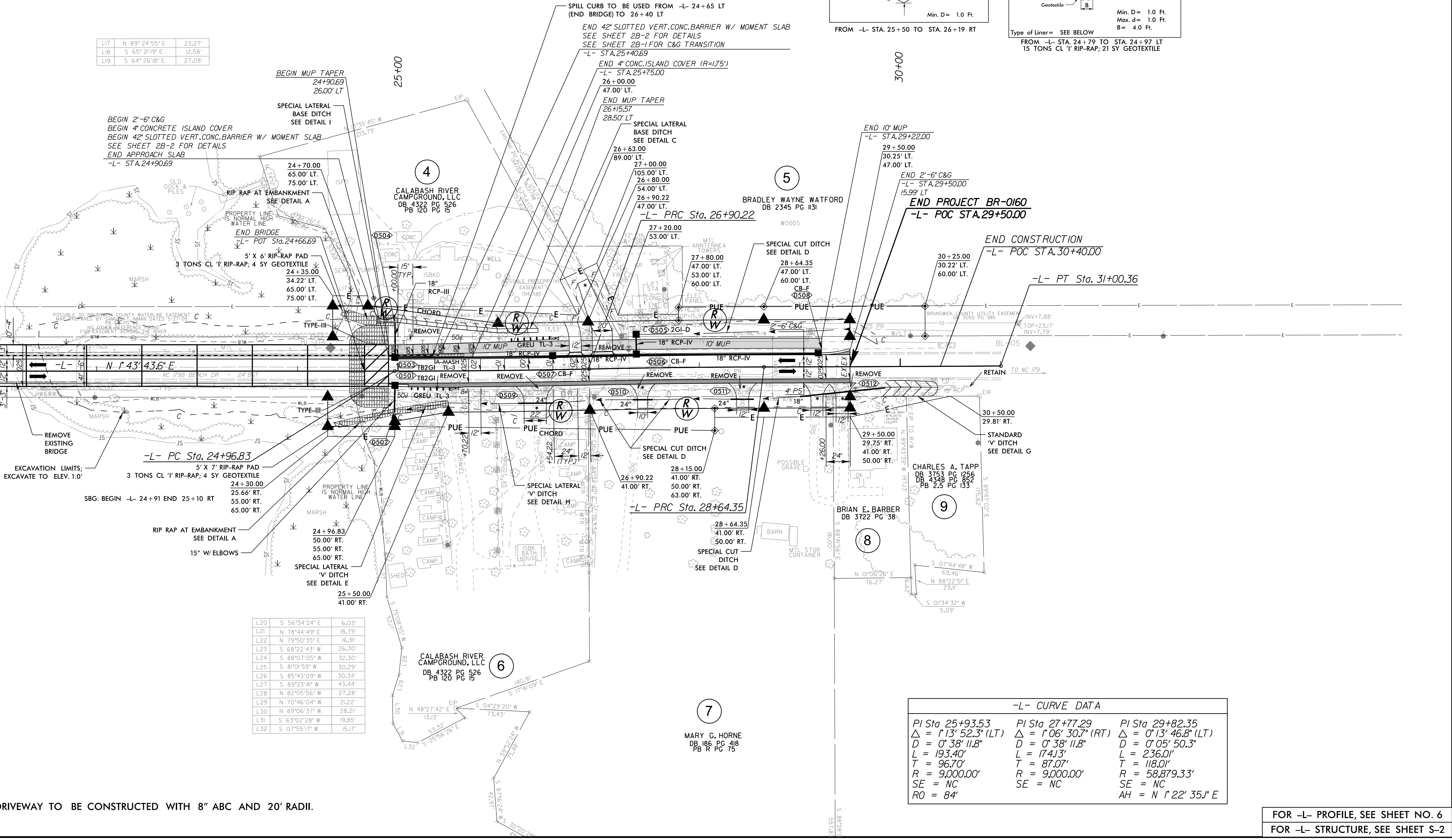
**RS&H** 8521 SIX FORKS ROAD, SUITE 400  
RALEIGH, NC 27615  
NC FIRM LICENSE No. F-0493

NAD 83/NA 2011



L17	N 89° 24' 55" E	23.27'
L18	S 65° 21' 19" E	12.58'
L19	S 64° 26' 18" E	27.08'

MATCHLINE SHEET 4 -L- STA. 21+00.00



L20	S 56° 34' 24" E	6.03'
L21	N 78° 44' 49" E	18.79'
L22	N 79° 50' 35" E	16.9'
L23	S 68° 22' 43" W	26.30'
L24	S 88° 07' 05" W	32.30'
L25	S 81° 01' 59" W	30.29'
L26	S 85° 43' 09" W	30.34'
L27	S 89° 23' 41" W	43.44'
L28	N 82° 05' 56" W	27.28'
L29	N 70° 46' 04" W	21.22'
L30	N 89° 06' 37" W	28.21'
L31	S 63° 02' 28" W	19.85'
L32	S 07° 55' 17" W	15.17'

-L- CURVE DATA		
PI Sta. 25+93.53	PI Sta. 27+77.29	PI Sta. 29+82.35
$\Delta = 1' 13" 52.3" (LT)$	$\Delta = 1' 06" 30.7" (RT)$	$\Delta = 0' 13" 46.8" (LT)$
$D = 0' 38" 11.8"$	$D = 0' 38" 11.8"$	$D = 0' 05" 50.3"$
$L = 193.40'$	$L = 174.13'$	$L = 236.01'$
$T = 96.70'$	$T = 87.07'$	$T = 118.01'$
$R = 9,000.00'$	$R = 9,000.00'$	$R = 58,879.33'$
SE = NC	SE = NC	SE = NC
RO = 84'		AH = N 1° 22' 35.1" E

NOTES:  
 \* DRIVEWAY TO BE CONSTRUCTED WITH 8" ABC AND 20' RADII.

FOR -L- PROFILE, SEE SHEET NO. 6  
 FOR -L- STRUCTURE, SEE SHEET S-2