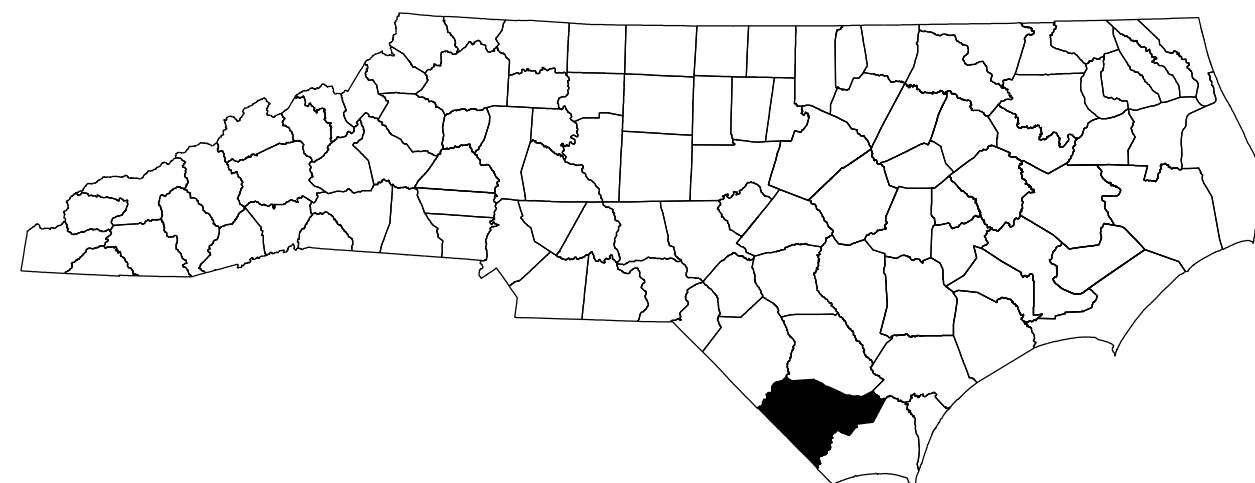


STATE OF NORTH CAROLINA
DIVISION OF HIGHWAYS

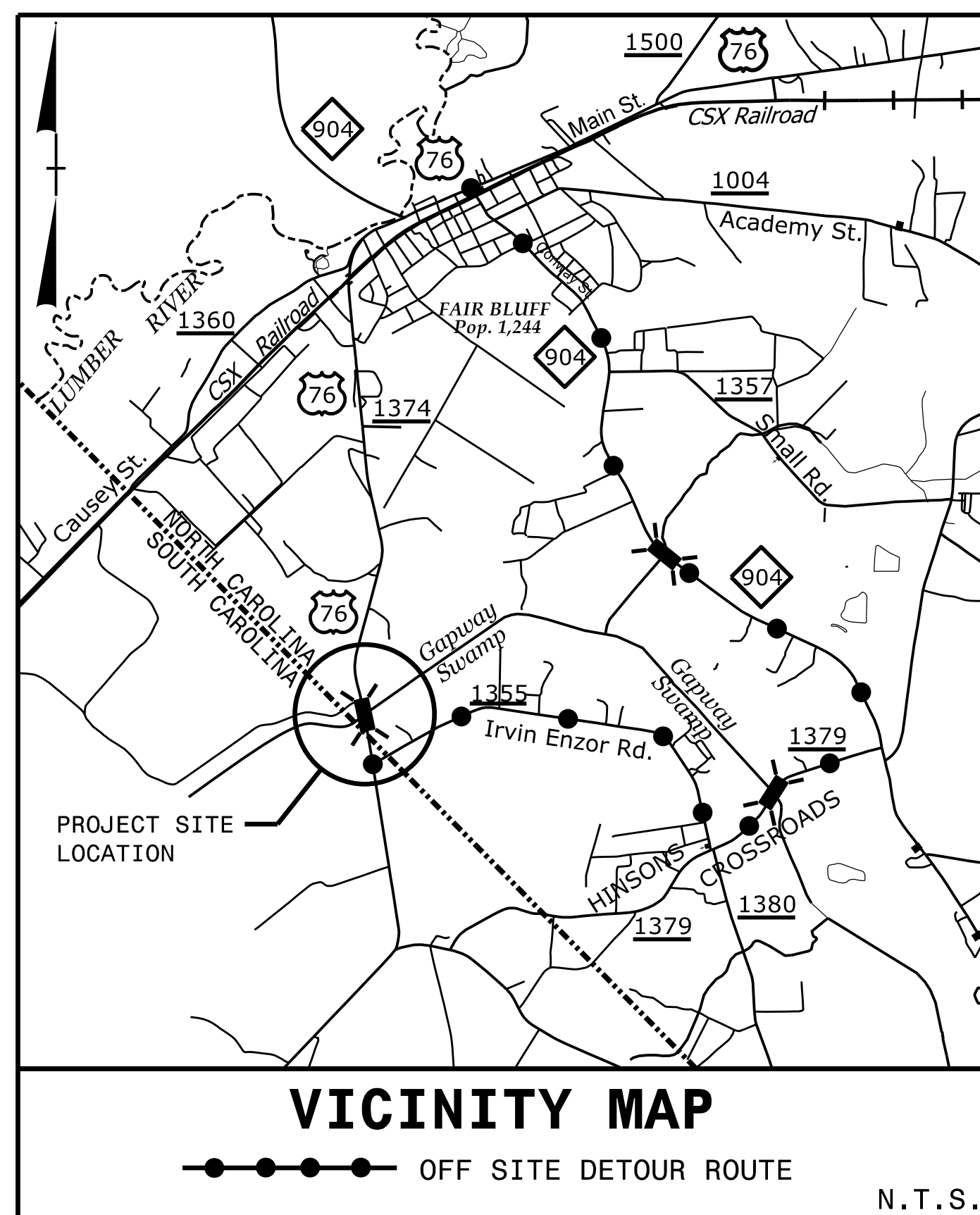
TRANSPORTATION MANAGEMENT PLAN

COLUMBUS COUNTY

DIVISION 6



LOCATION: BRIDGE 230005 OVER GAPWAY SWAMP
ON US 76 (MAIN ST)



SHEET NO.
TMP-1

INDEX OF SHEETS

SHEET NO.	TITLE
TMP-1	TITLE SHEET, VICINITY MAP, INDEX OF SHEETS, ROADWAY STANDARD DRAWINGS, AND LEGEND
TMP-2	GENERAL NOTES, TRAFFIC MANAGEMENT STRATEGY, AND PHASING
TMP-3	US 76 CLOSURE AND DETOUR ROUTE
TMP-4	INSET A DETAIL

ROADWAY STANDARD DRAWINGS

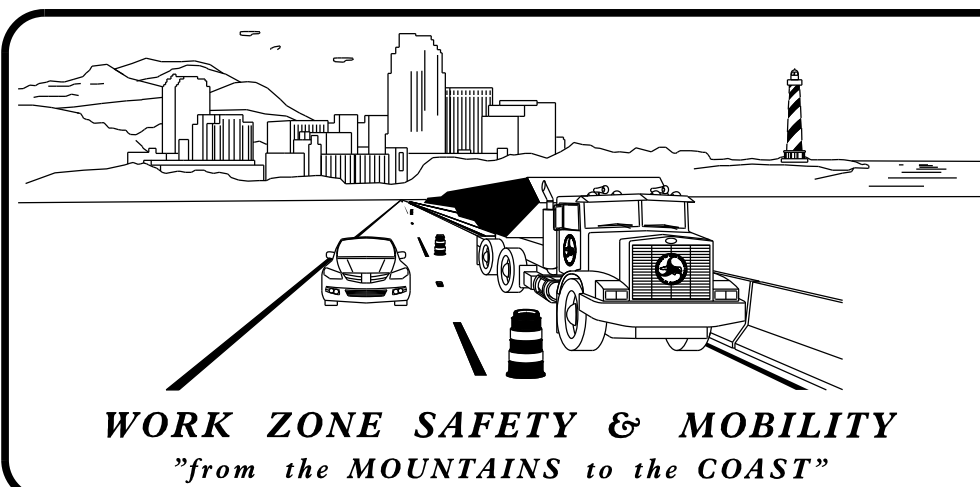
THE FOLLOWING ROADWAY STANDARDS AS SHOWN IN "ROADWAY STANDARD DRAWINGS" - N.C. DEPARTMENT OF TRANSPORTATION - RALEIGH, N.C., DATED JANUARY 2018 ARE APPLICABLE TO THIS PROJECT AND BY REFERENCE HEREBY ARE CONSIDERED A PART OF THESE PLANS:

STD. NO.	TITLE
1101.01	WORK ZONE ADVANCED WARNING SIGNS
1101.02	TEMPORARY LANE CLOSURES
1101.03	TEMPORARY ROAD CLOSURES
1101.04	TEMPORARY SHOULDER CLOSURES
1101.11	TRAFFIC CONTROL DESIGN TABLES
1110.01	STATIONARY WORK ZONE SIGNS
1110.02	PORTABLE WORK ZONE SIGNS
1130.01	DRUMS
1135.01	CONES
1145.01	BARRICADES
1150.01	FLAGGERS
1180.01	SKINNY DRUMS

LEGEND

- NORTH ARROW
- STATIONARY SIGN
- PORTABLE SIGN
- BARRICADE (TYPE III)
- CONES
- DRUM
- SKINNY DRUM
- CHANGEABLE MESSAGE SIGN (CMS)
- DETOUR

DOCUMENT NOT CONSIDERED FINAL
UNLESS ALL SIGNATURES COMPLETED



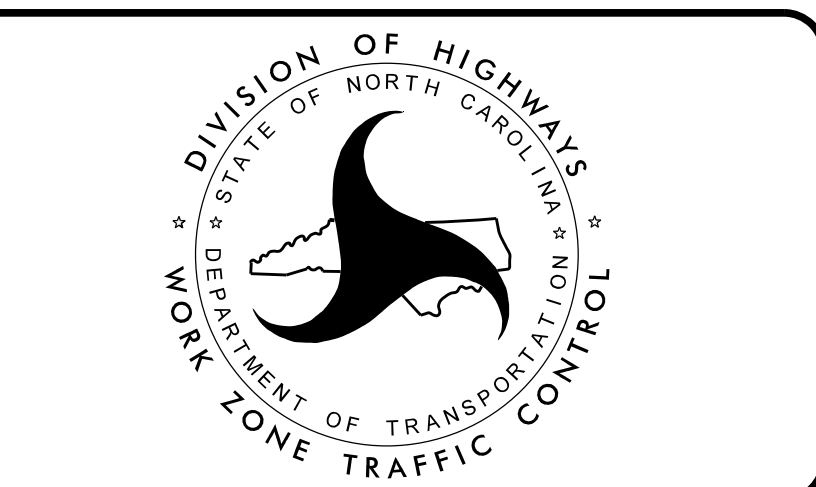
PLANS PREPARED BY:

BRENT BARNHILL
PROJECT DESIGN ENGINEER

ZACHARY THORNTON, PE
PROJECT QC ENGINEER

NCDOT CONTACTS:

TIERRE PETERSON, PE
TEAM LEADER - PEF COORDINATION



VOLKERT

5430 Wade Park Blvd., Suite 410
Raleigh, NC 27607
Tel. 919-854-0344 Fax. 919-854-0355
NC License No. F-0765

APPROVED: _____
DATE: 1/9/2023

SEAL

TIP PROJECT: BR-0073

\$\$\$\$\$SYTIME\$\$\$\$\$
\$\$\$\$\$DGN\$\$\$\$\$
\$\$\$\$\$USERNAME\$\$\$\$\$

GENERAL NOTES

THE FOLLOWING GENERAL NOTES APPLY AT ALL TIMES FOR THE DURATION OF THE CONSTRUCTION PROJECT EXCEPT WHEN OTHERWISE NOTED IN THE PLAN OR DIRECTED BY THE ENGINEER.

CHANGES MAY BE REQUIRED WHEN PHYSICAL DIMENSIONS IN THE PLAN, STANDARD DETAILS, AND ROADWAY STANDARD DRAWINGS ARE NOT ATTAINABLE TO MEET FIELD CONDITIONS, OR RESULT IN DUPLICATE OR UNDESIRED OVERLAPPING OF DEVICES. MODIFICATION MAY INCLUDE, MOVING, SUPPLEMENTING, COVERING, OR REMOVAL OF DEVICES AS DIRECTED BY THE ENGINEER.

REFER TO THE NCDOT 2018 STANDARD SPECIFICATIONS FOR ROADS AND STRUCTURES FOR ADDITIONAL REQUIREMENTS.

TRAFFIC PATTERN ALTERATIONS

A) NOTIFY THE ENGINEER THIRTY (30) CALENDAR DAYS PRIOR TO ANY TRAFFIC PATTERN ALTERATION.

SIGNING

B) INSTALL ADVANCED WORK ZONE SIGNS WHEN WORK IS WITHIN 40 FT FROM THE EDGE OF TRAVEL LANE AND NO MORE THAN THREE (3) DAYS PRIOR TO THE BEGINNING OF CONSTRUCTION.

PROVIDE SIGNING REQUIRED FOR THE OFF-SITE DETOUR ROUTE AS SHOWN IN THE TRANSPORTATION MANAGEMENT PLANS.

C) COVER OR REMOVE ALL SIGNS AND DEVICES REQUIRED TO CLOSE THE ROAD WHEN ROAD CLOSURE IS NOT IN OPERATION.

COVER OR REMOVE ALL SIGNS REQUIRED FOR THE OFF-SITE DETOUR WHEN THE DETOUR IS NOT IN OPERATION.

D) ENSURE ALL NECESSARY SIGNING IS IN PLACE PRIOR TO ALTERING ANY TRAFFIC PATTERN.

E) ENSURE EXISTING SIGNS, AND WZTC SIGNS ARE NOT CONFLICTING WITH ONE ANOTHER DURING THE DURATION OF THE PROJECT.

F) WHEN EXISTING SIGNS CONFLICT WITH THE WZTC SIGNS AND/OR DEVICES COVER EXISTING SIGNS.

LANE AND SHOULDER CLOSURE REQUIREMENTS

G) REMOVE LANE CLOSURE DEVICES FROM THE LANE WHEN WORK IS NOT BEING PERFORMED BEHIND THE LANE CLOSURE OR WHEN A LANE CLOSURE IS NO LONGER NEEDED OR AS DIRECTED BY THE ENGINEER.

H) WHEN PERSONNEL AND/OR EQUIPMENT ARE WORKING WITHIN 15 FT OF AN OPEN TRAVEL LANE, CLOSE THE NEAREST SHOULDER USING ROADWAY STANDARD DRAWING 1101.04 UNLESS THE WORK AREA IS PROTECTED BY BARRIER OR GUARDRAIL OR A LANE CLOSURE IS INSTALLED.

I) WHEN PERSONNEL AND/OR EQUIPMENT ARE WORKING WITHIN A LANE OF TRAVEL OF AN UNDIVIDED OR DIVIDED FACILITY, CLOSE THE LANE ACCORDING TO THE TRAFFIC CONTROL PLANS, ROADWAY STANDARD DRAWINGS, OR AS DIRECTED BY THE ENGINEER. CONDUCT THE WORK SO THAT ALL PERSONNEL AND/OR EQUIPMENT REMAIN WITHIN THE CLOSED TRAVEL LANE.

J) DO NOT WORK SIMULTANEOUSLY WITHIN 15FT OF BOTH SIDES OF AN OPEN TRAVELWAY, RAMP OR LOOP WITHIN THE SAME LOCATION UNLESS PROTECTED WITH GUARDRAIL OR BARRIER.

K) WHEN PERSONNEL AND/OR EQUIPMENT ARE WORKING ON THE SHOULDER ADJACENT TO AN UNDIVIDED FACILITY AND WITHIN 5 FT OF AN OPEN TRAVEL LANE, CLOSE THE NEAREST OPEN TRAVEL LANE USING ROADWAY STANDARD DRAWING NO. 1101.02 UNLESS THE WORK AREA IS PROTECTED BY BARRIER OR GUARDRAIL.

PAVEMENT EDGE DROP OFF REQUIREMENTS

L) BACKFILL AT 6:1 SLOPE UP TO THE EDGE AND ELEVATION OF EXISTING PAVEMENT IN AREAS ADJACENT TO AN OPENED TRAVEL LANE THAT HAS AN EDGE OF PAVEMENT DROP-OFF AS FOLLOWS:

BACKFILL DROP-OFFS THAT EXCEED 2 INCHES ON ROADWAYS WITH POSTED SPEED LIMITS OF 45 MPH OR GREATER. BACKFILL WITH SUPTABLE COMPACTED MATERIAL AS APPROVED BY THE ENGINEER, AT NO EXPENSE TO THE DEPARTMENT.

M) DO NOT EXCEED A DIFFERENCE OF 2 INCHES IN ELEVATION BETWEEN OPEN LANES OF TRAFFIC FOR NOMINAL LIFTS OF 1.5 INCHES. INSTALL ADVANCED WORKING "UNEVEN LANES" SIGNS (W8-11) 500 FT IN ADVANCE AND A MINIMUM OF EVERY HALF MILE THROUGH THE UNEVEN AREA.

TRAFFIC CONTROL DEVICES

N) ENSURE ALL NECESSARY TRAFFIC CONTROL DEVICES, SIGNS, BARRICADES, MARKINGS, ETC ARE IN PLACE PRIOR TO ALTERING ANY TRAFFIC PATTERN.

O) PLACE TYPE III BARRICADES WITH "ROAD CLOSED" SIGN R11-2 ATTACHED, OF SUFFICIENT LENGTH TO CLOSE ENTIRE ROADWAY.

PAVEMENT MARKINGS

P) INSTALL PAVEMENT MARKINGS ON THE FINAL SURFACE AS SHOWN IN THE FINAL PAVEMENT MARKING PLAN AND RESURFACING PLANS.

Q) TIE PROPOSED PAVEMENT MARKING LINES TO EXISTING PAVEMENT MARKING LINES.

PHASING

NOTE: LOCAL ACCESS TO ALL RESIDENCES AND BUSINESSES WILL BE MAINTAINED BETWEEN CLOSURE POINTS AT ALL TIMES DURING CONSTRUCTION.

PHASE I:

STEP 1:

USING RSD 1101.02 (SHEET 1 OF 14), AND FLAGGERS, PERFORM WIDENING AND RESURFACING OPERATIONS ON SR 1355 (IRVIN ENZOR ROAD) AND SR 1379 (HINSONS CROSSROADS) IN ACCORDANCE WITH THE RESURFACING PLANS.

STEP 2:

COMPLETE CONSTRUCTION OF THE PROPOSED WIDENING AND ASPHALT OVERLAY. PLACE PAVEMENT MARKINGS ON SR 1355 AND SR 1379 PRIOR TO REMOVAL OF THE TRAFFIC CONTROL DEVICES.

STEP 3:

REMOVE TEMPORARY TRAFFIC CONTROL DEVICES REQUIRED FOR THE WIDENING AND RESURFACING OPERATIONS.

PHASE II:

STEP 1:

AFTER RESURFACING OPERATIONS HAVE BEEN COMPLETED, INSTALL CMS 1 BOARDS, ACCORDING TO SHEET TMP-3, 7 DAYS BEFORE ROAD CLOSURE.

STEP 2:

USING ROADWAY STANDARD DRAWING 1101.03 (SHEET 1 OF 9) AND TMP-3, INSTALL ROAD CLOSURE AND DETOUR SIGNS, PLACE TRAFFIC ON OFF-SITE DETOUR ROUTE, AND CLOSE US 76 (MAIN ST).

STEP 3:

WITH US 76 CLOSED TO TRAFFIC PERFORM THE FOLLOWING:

-REMOVE EXISTING BRIDGE.

-CONSTRUCT PROPOSED BRIDGE.

-CONSTRUCT PROPOSED ROADWAY THROUGH THE FINAL SURFACE COURSE.

-PLACE FINAL PAVEMENT MARKINGS AND TIE IN WITH EXISTING MARKINGS.

PHASE III:

REMOVE ROAD CLOSURE DEVICES AND DETOUR SIGNS AND OPEN US 76 (MAIN ST) TO TRAFFIC.

LOCAL NOTES

A) NOTIFY THE FOLLOWING AUTHORITIES ONE MONTH PRIOR TO ANY TRAFFIC PATTERN ALTERATION:

LOCAL NC CONTACTS:

JEFF SPIVEY
COLUMBUS COUNTY SCHOOL TRANSPORTATION DIRECTOR
OFFICE: 910-642-2586

DAVID RANSOM
COLUMBUS COUNTY EMERGENCY SERVICES DEPUTY DIRECTOR
OFFICE: 910-640-6610

LOCAL SCDOT CONTACTS:

J. COREY JOHNSON
ASSISTANT RESIDENT MAINTENANCE ENGINEER
OFFICE: 843-431-1130

JOEY SKIPPER
DISTRICT TRAFFIC ENGINEER
OFFICE: 843-661-4710

RANDALL WEBSTER
HORRY COUNTY EMERGENCY MANAGEMENT DEPARTMENT HEAD
OFFICE: 843-915-5150

BENJAMIN PRINCE
HORRY COUNTY SCHOOL EXECUTIVE DIRECTOR OF TRANSPORTATION
OFFICE: 843-488-6957

B) LOCAL ACCESS TO ALL RESIDENCES AND BUSINESSES WILL BE MAINTAINED BETWEEN CLOSURE POINTS AT ALL TIMES DURING CONSTRUCTION.

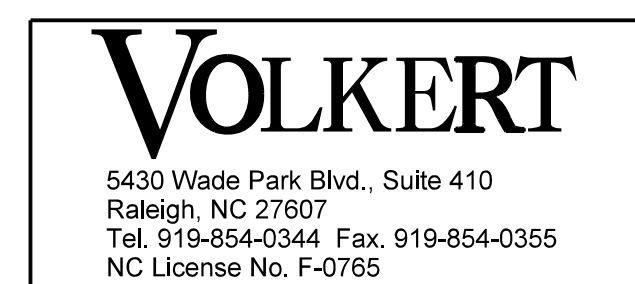
TRANSPORTATION MANAGEMENT STRATEGIES

PROPOSED BRIDGE AND ROADWAY CONSTRUCTION WILL BE PERFORMED UNDER A ROAD CLOSURE, WITH TRAFFIC OPERATING ON AN OFF-SITE DETOUR (3.7 MILES).

ROADS USED FOR OFF-SITE DETOUR INCLUDE SR 1355, SR 1379, AND NC 904.

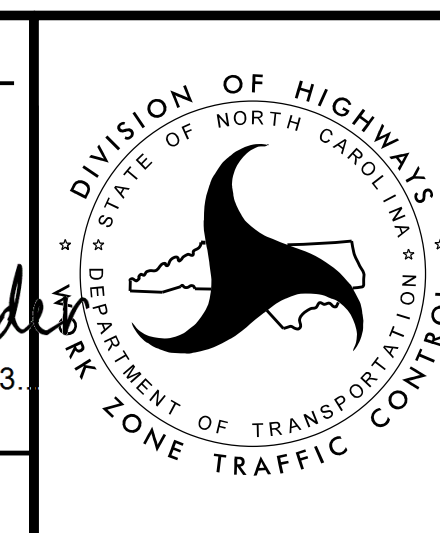
USING FLAGGERS, COMPLETE IMPROVMENTS OF EXISTING SR-1355 AND SR-1379 PRIOR TO PLACE TRAFFIC ONTO OFF-SITE DETOUR

\$\$\$\$\$SYTIME\$\$\$\$\$
\$\$\$\$\$DGN\$\$\$\$\$
\$\$\$\$\$USERNAM\$\$\$\$\$



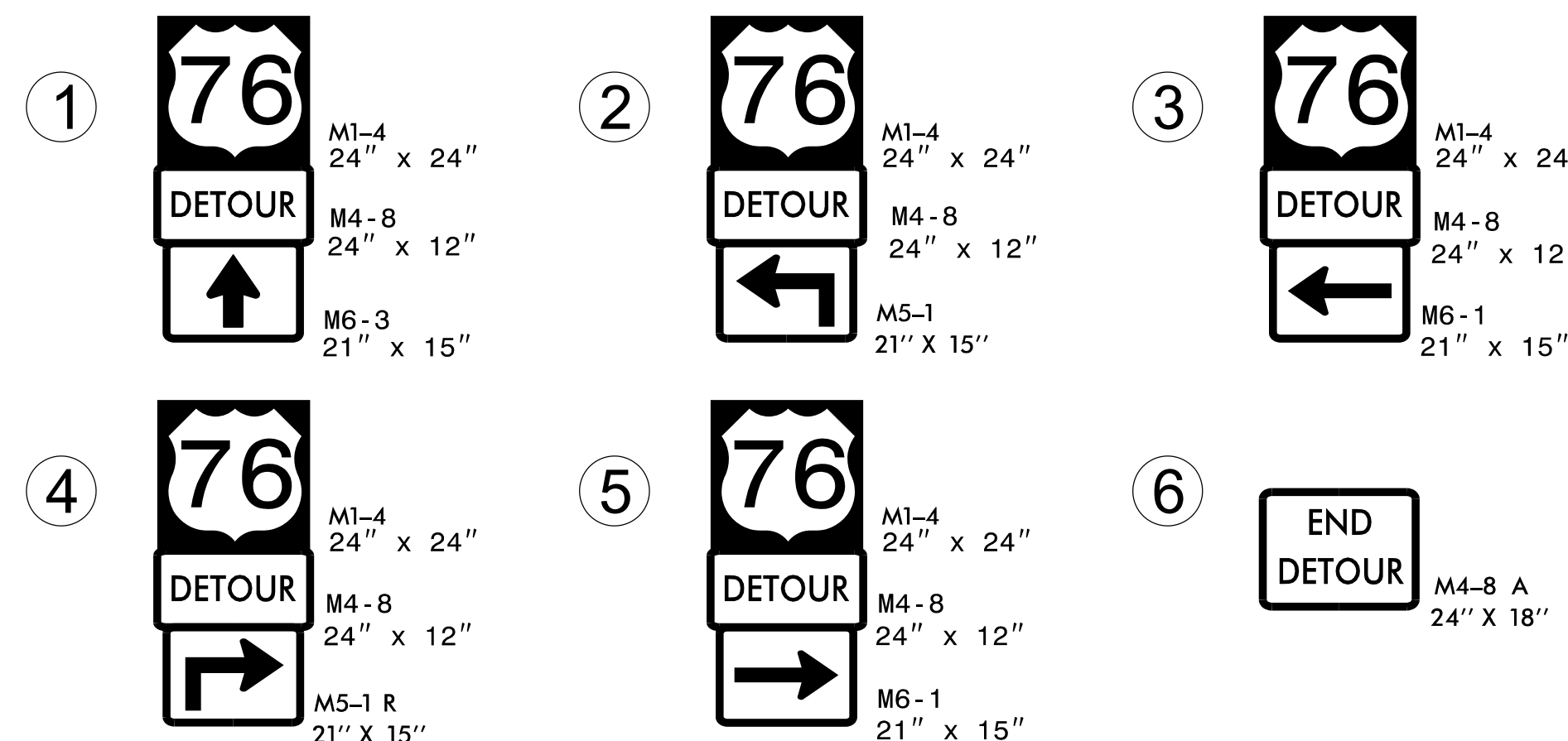
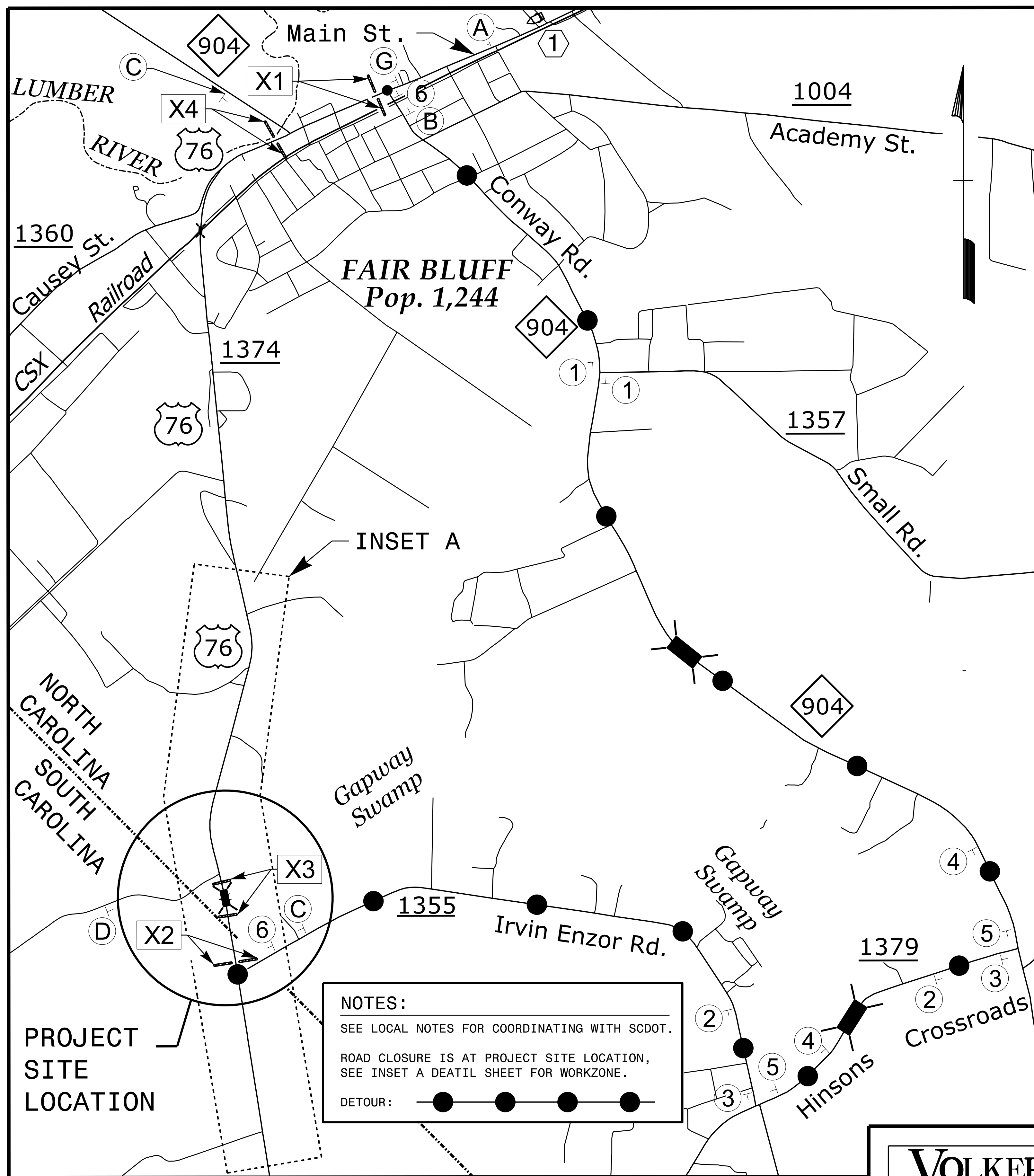
APPROVED: _____
DATE: 1/9/2023
SEAL

DOCUMENT NOT CONSIDERED FINAL UNLESS ALL SIGNATURES COMPLETED

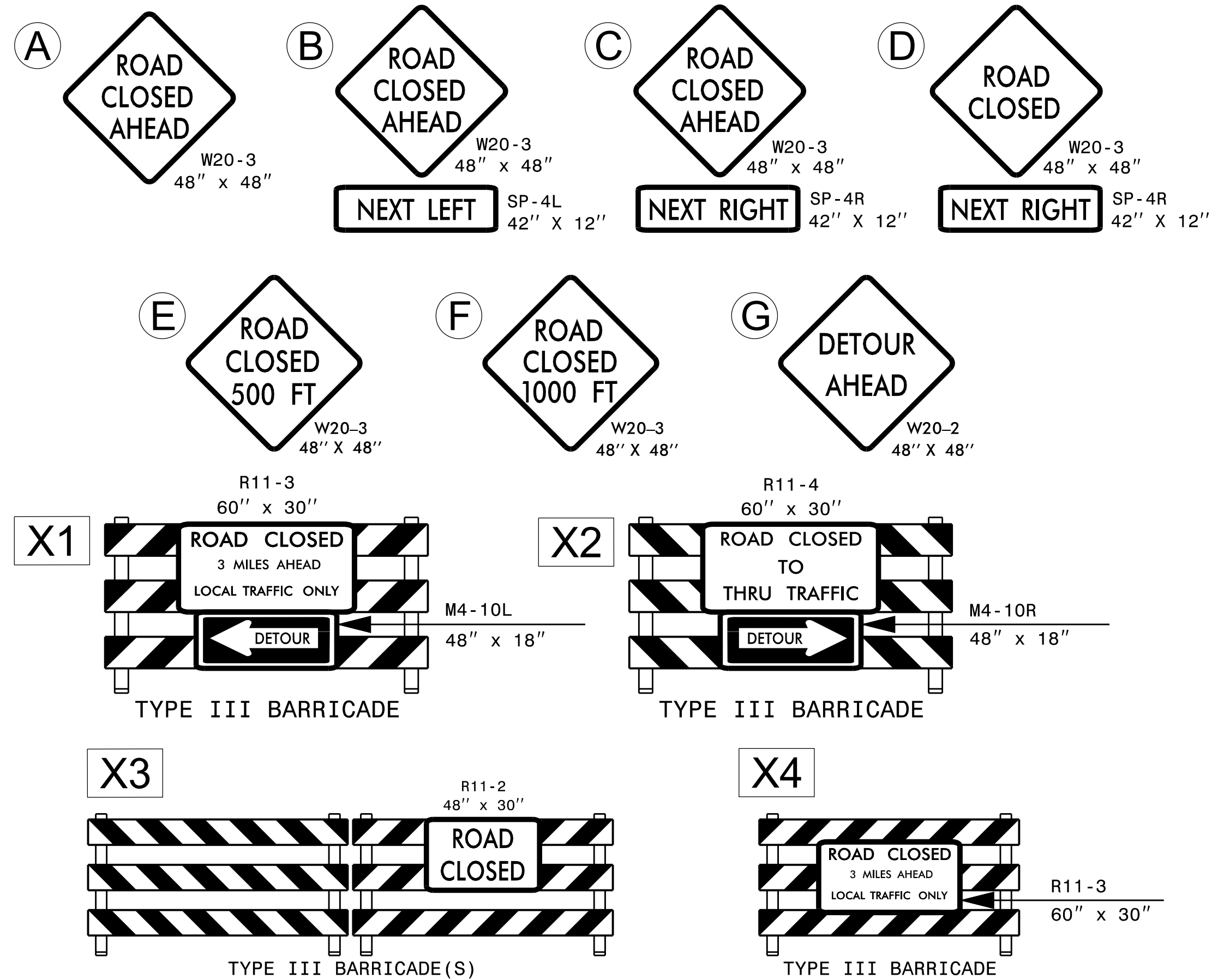


GENERAL NOTES, TRAFFIC
MANAGEMENT STRATEGY, AND
PHASING

1 CHANGEABLE MESSAGE BOARD SHALL BE PLACED 1/2 MILE BEFORE SIGN 2 ON US 76



7 DAYS PRIOR TO CLOSURE		DURING CLOSURE	
MESSAGE NO. 1	MESSAGE NO. 2	MESSAGE NO. 1	MESSAGE NO. 2
US 76 TO CLOSE XX-XX-XX	US 76 TO CLOSE XX-XX-XX	US 76 CLOSED AHEAD	FOLLOW DETOUR SIGNS
CHANGEABLE MESSAGE SIGN	CHANGEABLE MESSAGE SIGN	CHANGEABLE MESSAGE SIGN	CHANGEABLE MESSAGE SIGN



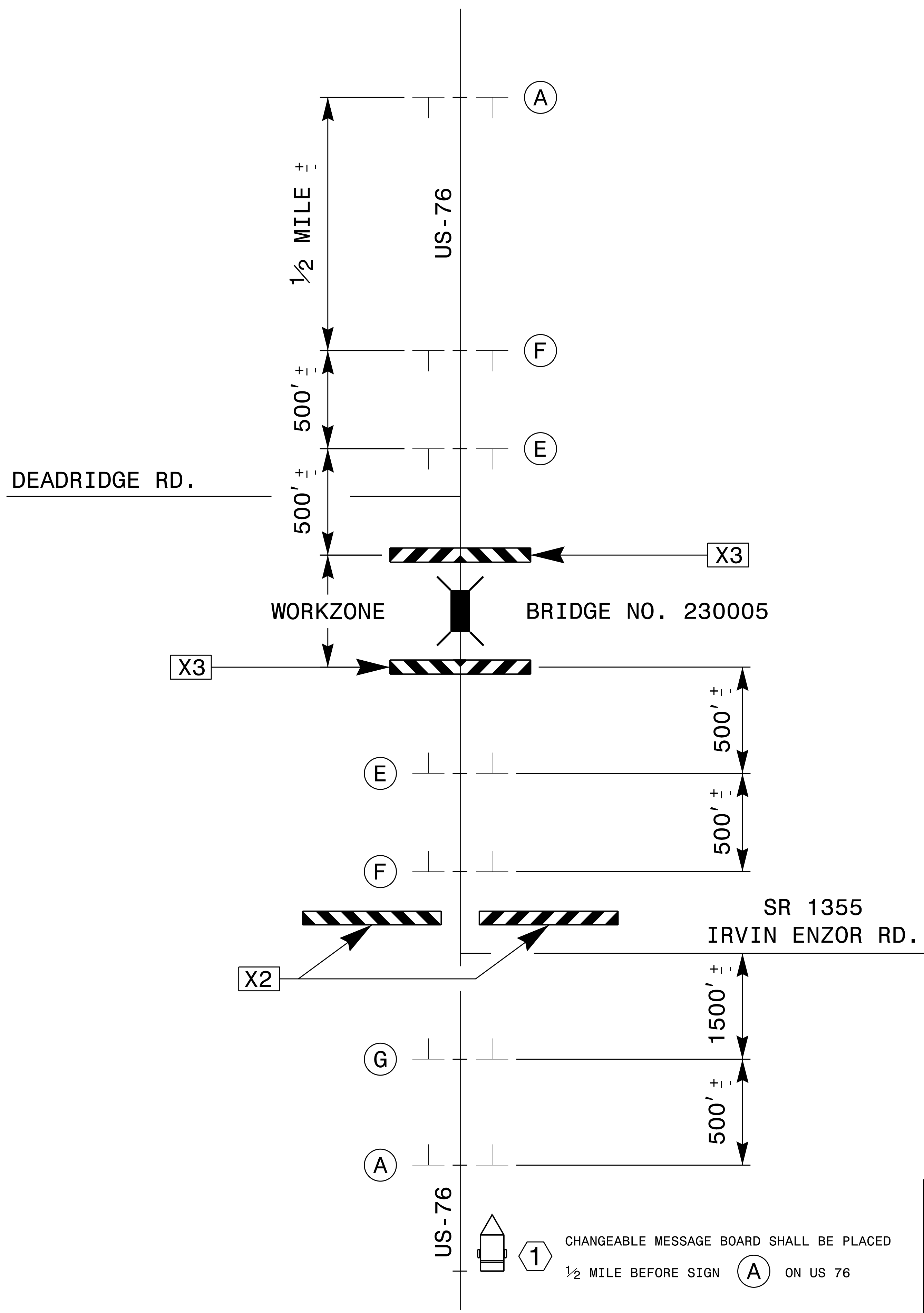
\$\$\$SYSTEMTIME\$\$\$\$\$
\$\$\$DGN\$\$\$\$\$
\$\$\$USERNAME\$\$\$\$\$

VOLKERT
5430 Wade Park Blvd., Suite 410
Raleigh, NC 27607
Tel. 919-854-0344 Fax. 919-854-0355
NC License No. F-0765

APPROVED: _____
DATE: 1/9/2023
SEAL



**US 76 (MAIN ST)
ROAD CLOSURE AND
DETOUR ROUTE**



\$\$\$\$\$SYTIME\$\$\$\$\$
 \$\$\$DDGN\$\$\$\$\$
 \$\$\$USERNAM\$\$\$\$\$

VOLKERT
 5430 Wade Park Blvd., Suite 410
 Raleigh, NC 27607
 Tel. 919-854-0344 Fax. 919-854-0355
 NC License No. F-0765

APPROVED: _____
 DATE: 1/9/2023

SEAL

DOCUMENT NOT CONSIDERED FINAL
 UNLESS ALL SIGNATURES COMPLETED

DIVISION OF HIGHWAYS
 STATE OF NORTH CAROLINA
 DEPARTMENT OF TRANSPORTATION
 WORK ZONE TRAFFIC CONTROL

INSET A DETAIL