




STATE OF NORTH CAROLINA
DEPARTMENT OF TRANSPORTATION

ROY COOPER
GOVERNOR

J. ERIC BOYETTE
SECRETARY

September 28, 2021

MEMORANDUM TO: David Stutts, PE
Structures Project Engineer
Structures Management Unit

FROM: Craig Haden 
GeoEnvironmental Project Manager
GeoEnvironmental Section
Geotechnical Engineering Unit

TIP NO: BR-0073
WBS: 67073.1.1
COUNTY: COLUMBUS
DIVISION: 6
DESCRIPTION: Replace Bridge 230005 on US 76 over Gapway Swamp

SUBJECT: **Pre-Scoping Comments**

The GeoEnvironmental Section performed a records search of readily available information for the given project study area to identify known and potential sites of concern. No sites of concern were identified within the project area. If the project limit changes, please let us know, so we can reevaluate the study area.

cc:
John Pilipchuk, LG, PE, State Geotechnical Engineer
Brian Hanks, PE, State Structures Engineer
Brent Hall, Locations and Surveys
Byron Sanders, Jr., PE, State Utilities Manager
William Marsh PE, Division Construction Engineer
Kaye Baggett, Division Right of Way Agent
David Hering, LG, PE, Geotechnical Regional Manager
Dean Argenbright, LG, Regional Geological Engineer
Neal Strickland, State Negotiator
row-notify@ncdot.gov
roadwaydesign@ncdot.gov
hydraulics_notify@ncdot.gov

File

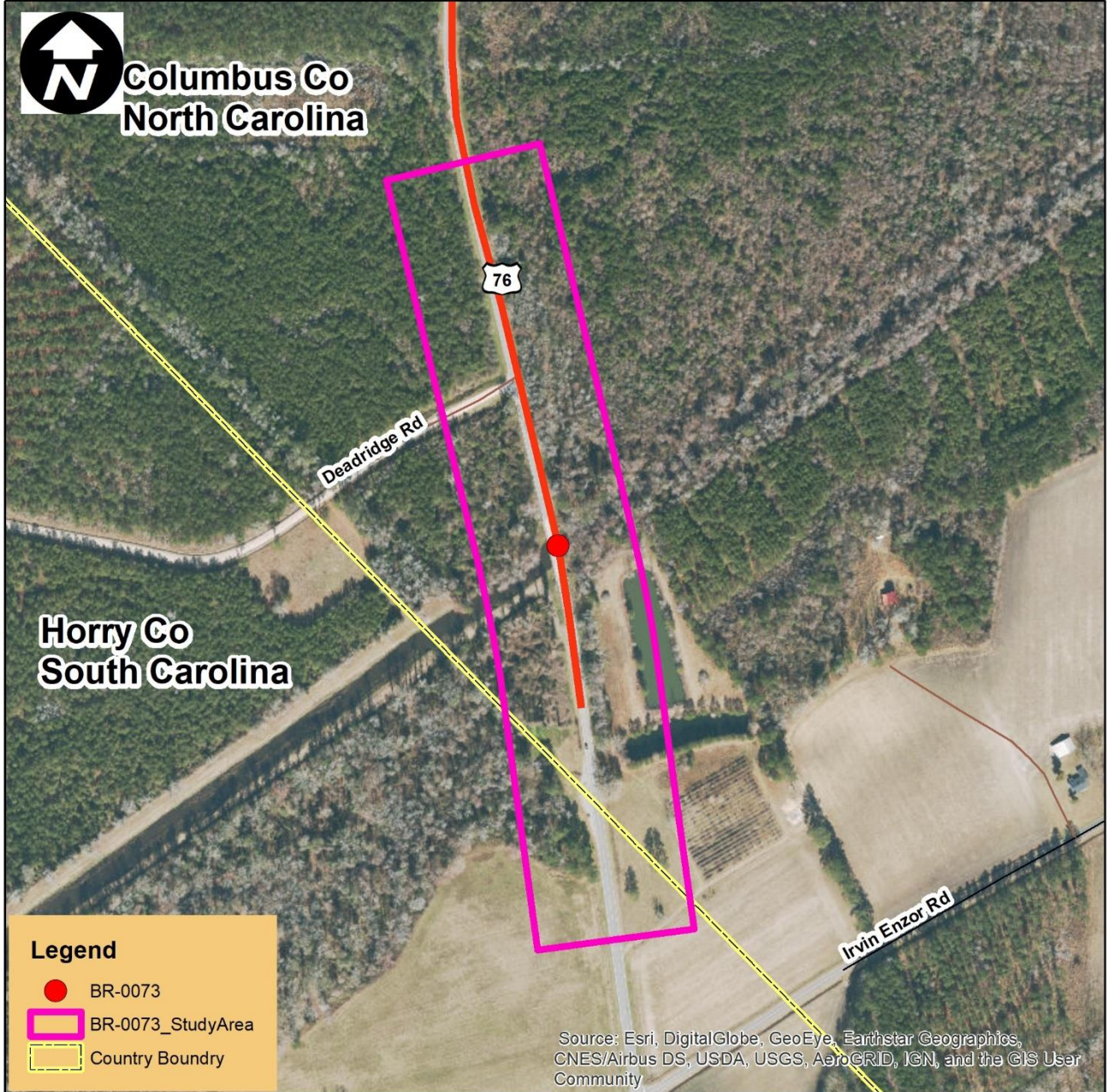
Mailing Address:
NC DEPARTMENT OF TRANSPORTATION
GEOTECHNICAL ENGINEERING UNIT
1589 MAIL SERVICE CENTER
RALEIGH NC 27699-1589

Telephone: 919-707-6850
Fax: 919-250-4237
Customer Service: 1-877-368-4968

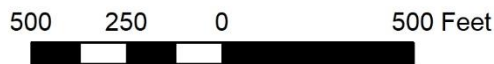
Website: www.ncdot.gov

Location:
CENTURY CENTER COMPLEX
ENTRANCE B-2
1020 BIRCH RIDGE DRIVE
RALEIGH NC

Appendix A
Location of GeoEnvironmental Sites of Concern



Project 67073,1,1 (TIP # BR-0073)
Bridge # 530005 on US 76
over Gapway Swamp
Columbus County



NC Department of Transportation
Geotechnical Engineering Unit
GeoEnvironmental Section

