



NC DEPARTMENT OF TRANSPORTATION
 DIVISION OF HIGHWAYS
 STRUCTURE MANAGEMENT UNIT

ATTENTION: PAR, NEW REPAIRS, DATA CHANGES

Structure Safety Report

Routine Element Inspection - Contract

INSPECTION DATE: 06/03/2020

DIVISION: 6 COUNTY: COLUMBUS STRUCTURE NUMBER: 230005 FREQUENCY: 24 MONTHS

FACILITY CARRIED: US76 MILE POST: _____

LOCATION: 0.3 MI.E.JCT.SR1355

FEATURE INTERSECTED: GAPWAY SWAMP

LATITUDE: 34° 16' 32.84" LONGITUDE: 79° 2' 29.8"

SUPERSTRUCTURE: _____

SUBSTRUCTURE: _____

SPANS: 4 SPANS. SEE SPAN PROFILE SHEET FOR SPAN DETAILS

FRACTURE CRITICAL TEMPORARY SHORING SCOUR CRITICAL SCOUR PLAN OF ACTION

NBI GRADES: DECK 6 SUPERSTRUCTURE 6 SUBSTRUCTURE ~~5~~ 4 CULVERT N

Controlled by U/W inspection per DNS

POSTED SV: Not Posted Not Posted POSTED TTST: Not Posted Not Posted

OTHER SIGNS PRESENT: TWO (2) DELINEATORS



Sign noticed issued for	Number Required
<u>NO</u> WEIGHT LIMIT	<u>0</u>
<u>YES</u> DELINEATORS	<u>2</u>
<u>NO</u> NARROW BRIDGE	<u>0</u>
<u>NO</u> ONE LANE BRIDGE	<u>0</u>
<u>NO</u> LOW CLEARANCE	<u>0</u>

DIRECTION OF INSPECTION W-E

DIRECTION MATCHES PLANS YES

LOOKING EAST

INSPECTED BY D. Curtis	SIGNATURE <i>D Curtis</i>	ASSISTED BY R. Wendlandt
---------------------------	------------------------------	--------------------------

NATIONAL BRIDGE INVENTROY ----- STRUCTURE INVENTORY AND APPRAISAL

08/14/2020

IDENTIFICATION

(1) STATE NAME NORTH CAROLINA BRIDGE 230005
 (8) STRUCTURE NUMBER (FEDERAL) 0470005
 (5) INVENTORY ROUTE (ON/UNDER) ON 121000760
 (2) STATE HIGHWAY DEPARTMENT DISTRICT 6
 (3) COUNTY CODE (FEDERAL) 47 (4) PLACE CODE 00000
 (6) FEATURE INTERSECTED GAPWAY SWAMP
 (7) FACILITY CARRIED US76
 (9) LOCATION 0.3 MI.E.JCT.SR1355
 (11) MILEPOINT 0.0
 (12) BASE HIGHWAY NETWORK 1
 (13) LRS INVENTORY ROUTE & SUBROUTE 20076
 (16) LATITUDE 34° 16' 32.84" (17) LONGITUDE 79° 2' 29.8"
 (98) BORDER BRIDGE STATE CODE PERCENT SHARED
 (99) BORDER BRIDGE STRUCTURE NUMBER

SUFFICIENCY RATING 61.30
 STATUS =
CLASSIFICATION
 (112) NBIS BRIDGE SYSTEM YES
 (104) HIGHWAY SYSTEM Inventory Route is on NHS 1
 (26) FUNCTIONAL CLASS Rural Principal Arterial - Other 02
 (100) STRAHNET HIGHWAY Non-Interstate STRAHNET Route 2
 (101) PARALLEL STRUCTURE No parallel structure exists N
 (102) DIRECTION OF TRAFFIC 2-way traffic 2
 (103) TEMPORARY STRUCTURE
 (110) DESIGNATED NATIONAL NETWORK - on national network for trucks 0
 (20) TOLL On Free Road 3
 (21) MAINT - 01
 (22) OWNER - 01
 (37) HISTORICAL SIGNIFICANCE - 5

STRUCTURE TYPE AND MATERIAL

(43) STRUCTURE TYPE MAIN Concrete
 TYPE Tee Beam CODE 104
 (44) STRUCTURE TYPE APPROACH
 TYPE CODE
 (45) NUMBER OF SPANS IN MAIN UNIT 4
 (46) NUMBER OF SPANS IN APPROACH 0
 (107) DECK STRUCTURE TYPE CODE 1
 (108) WEARING SURFACE/PROTECTIVE SYSTEM
 (A) TYPE OF WEARING SURFACE CODE 1
 (B) TYPE OF MEMBRANE CODE 0
 (C) TYPE OF DECK PROTECTION CODE 0

CONDITION
 (58) DECK 6
 (59) SUPERSTRUCTURE 6
 (60) SUBSTRUCTURE 5
 (61) CHANNEL & CHANNEL PROTECTION 4
 (62) CULVERTS N

LOAD RATING AND POSTING

(31) DESIGN LOAD HS 15 3
 (63) OPERATING RATING METHOD - Load Factor 1
 (64) OPERATING RATING - HS-28 53
 (65) INVENTORY RATING METHOD - 1
 (66) INVENTORY RATING HS-17 32
 (70) BRIDGE POSTING No Posting Required 5
 (41) STRUCTURE OPEN, POSTED, OR CLOSED DESCRIPTION Open, no restriction A

AGE AND SERVICE

(27) YEAR BUILT 1927
 (106) YEAR RECONSTRUCTED 1952
 (42) TYPE OF SERVICE ON - Highway
 OFF - Waterway CODE 15
 (28) LANES ON STRUCTURE 2 LANES UNDER STRUCTURE 0
 (29) AVERAGE DAILY TRAFFIC 1000
 (30) YEAR OF ADT 2017 (109) TRUCK ADT PCT 14
 (19) BYPASS OR DETOUR LENGTH 99.0

APPRAISAL
 (67) STRUCTURAL EVALUATION 5
 (68) DECK GEOMETRY 5
 (69) UNDERCLEARANCES, VERT & HORIZ N
 (71) WATERWAY ADEQUACY 5
 (72) APPROACH ROADWAY ALIGNMENT 5
 (36) TRAFFIC SAFETY FEATURES 0111
 (113) SCOUR CRITICAL BRIDGES 4

GEOMETRIC DATA

(48) LENGTH OF MAXIMUM SPAN 37.0
 (49) STRUCTURE LENGTH 150.0
 (50) CURB OR SIDEWALK: LEFT 1.6 RIGHT 1.6
 (51) BRIDGE ROADWAY WIDTH, CURB TO CURB 28.0
 (52) DECK WIDTH OUT TO OUT 33.5
 (32) APPROACH ROADWAY WITH (W/ SHOULDERS) 25.0
 (33) BRIDGE MEDIAN No median CODE 0
 (34) SKEW 30 (35) STRUCTURE FLARED 0
 (10) INVENTORY ROUTE MIN VERT CLEAR 999.9
 (47) INVENTORY ROUTE TOTAL HORIZ CLEAR 28.0
 (53) MIN VERT CLEAR OVER BRIDGE RDWY 999.9
 (54) MIN VERT UNDERCLEAR: REFERENCE 0.0
 (55) MIN LAT UNDERCLEARANCE RT: REFERENCE N 0.0
 (56) MIN LAT UNDERCLEARANCE LT: 0.0

PROPOSED IMPROVEMENTS

(75) TYPE OF WORK CODE
 (76) LENGTH OF STRUCTURE IMPROVEMENT
 (94) BRIDGE IMPROVEMENT COST
 (95) ROADWAY IMPROVEMENT COST
 (96) TOTAL PROJECT COST
 (97) YEAR OF IMPROVEMENT COST ESTIMATE
 (114) FUTURE ADT 2,000 YEAR OF FUTURE ADT 2040

NAVIGATION DATA

(38) NAVIGATION CONTROL - CODE 0
 (111) PIER PROTECTION CODE
 (39) NAVIGATION VERTICAL CLEARANCE 0.0
 (116) VERT - LIFT BRIDGE NAV MIN VERT CLEAR 0.0
 (40) NAVIGATION HORIZONTAL CLEARANCE 0.0

INSPECTION

(90) INSPECTION DATE 06/20 (91) FREQUENCY 24
 (92) CRITICAL FEATURE INSPECTION (93) CFI DATE
 A) FRACTURE CRIT DETAIL A)
 B) UNDERWATER INSP 60 B) 03/20
 C) OTHER SPECIAL INSP C)
 SCOUR

Superstructure Build Details

Span Number 1

Span Length 37.5000

Skew 60.0000

Number of Items	Type of Component	Element Name	Quantity	Protective System Applied	Quantity (Sq Ft)
2	Concrete Railing	Reinforced Concrete Bridge Railing	76 Feet		
1	Reinforced Concrete Deck	Reinforced Concrete Deck	1182 Square Feet		
4	Reinforced Concrete Girder	Reinforced Concrete Open Girder/Beam	152 Feet		

Span Number 2

Span Length 37.5000

Skew 60.0000

Number of Items	Type of Component	Element Name	Quantity	Protective System Applied	Quantity (Sq Ft)
2	Concrete Railing	Reinforced Concrete Bridge Railing	76 Feet		
1	Standard Joint	Pourable Joint Seal	32 Feet		
1	Reinforced Concrete Deck	Reinforced Concrete Deck	1182 Square Feet		
4	Reinforced Concrete Girder	Reinforced Concrete Open Girder/Beam	152 Feet		

Span Number 3

Span Length 37.5000

Skew 60.0000

Number of Items	Type of Component	Element Name	Quantity	Protective System Applied	Quantity (Sq Ft)
1	Reinforced Concrete Deck	Reinforced Concrete Deck	1182 Square Feet		
4	Reinforced Concrete Girder	Reinforced Concrete Open Girder/Beam	152 Feet		
1	Standard Joint	Pourable Joint Seal	32 Feet		
2	Concrete Railing	Reinforced Concrete Bridge Railing	76 Feet		

Span Number 4

Span Length 37.5000

Skew 60.0000

Number of Items	Type of Component	Element Name	Quantity	Protective System Applied	Quantity (Sq Ft)
2	Concrete Railing	Reinforced Concrete Bridge Railing	76 Feet		
4	Reinforced Concrete Girder	Reinforced Concrete Open Girder/Beam	152 Feet		
2	Standard Joint	Pourable Joint Seal	64 Feet		
1	Reinforced Concrete Deck	Reinforced Concrete Deck	1182 Square Feet		

Structure Element Scoring

Structure Number: 230005

Inspection Date 6/3/2020

Element Number	Parent Number	Element Name	Location	Total Quantity	Level 1 Quantity	Level 2 Quantity	Level 3 Quantity	Level 4 Quantity
12	0	Reinforced Concrete Deck	Deck	4728	893	84	3751	0
110	0	Reinforced Concrete Open Girder/Beam	Beam	608	422	178	8	0
210	0	Reinforced Concrete Pier Wall	Piles and Columns	108	35	71	2	0
215	0	Reinforced Concrete Abutment	Abutments	108	29	79	0	0
220	0	Reinforced Concrete Pile Cap/Footing	Footing	36	0	0	36	0
228	0	Timber Pile	Foundation Pile	22	0	0	22	0
234	0	Reinforced Concrete Pier Cap	Caps	168	144	22	2	0
301	0	Pourable Joint Seal	Expansion Joints	128	127	0	0	1
331	0	Reinforced Concrete Bridge Railing	Bridge Rail	304	292	11	1	0

Summary of Maintenance Needs

Maintenance By Defect

Structure Number: **230005**

Inspection Date: **06/03/2020**

MMS Code	Element Name	Defect Name	Recommended Quantity
3326	Reinforced Concrete Deck	Cracking (RC and Other)	3871 Square Feet
3326	Reinforced Concrete Deck	Delamination/Spall	9 Square Feet
3306	Reinforced Concrete Open Girder/Beam	Exposed Rebar	1 Feet
3306	Reinforced Concrete Open Girder/Beam	Cracking (RC and Other)	3 Feet
3306	Reinforced Concrete Open Girder/Beam	Efflorescence/Rust Staining	1 Feet
3306	Reinforced Concrete Open Girder/Beam	Delamination/Spall	7 Feet
3306	Reinforced Concrete Open Girder/Beam	Patched Area	3 Feet
3348	Reinforced Concrete Pier Wall	Delamination/Spall	5 Feet
3348	Reinforced Concrete Pile Cap/Footing	Scour	36 Feet
3348	Reinforced Concrete Pile Cap/Footing	Delamination/Spall	12 Feet
3344	Timber Pile	Decay/Section Loss	22 Each
3348	Reinforced Concrete Pier Cap	Patched Area	2 Feet
3310	Pourable Joint Seal	Seal Damage	1 Feet
3318	Reinforced Concrete Bridge Railing	Exposed Rebar	3 Feet
3318	Reinforced Concrete Bridge Railing	Cracking (RC and Other)	1 Feet

Element Structure Maintenance Quantities

Structure Number: 230005

Inspection Date 06/03/2020

Location	MMS Code	Description	Maint Quantity	Total Quantity	Severe Quantity	Poor Quantity	Fair Quantity	Good Quantity
Abutments	3350	Maintenance of Concrete Wings and Wall	0	108	0	0	79	29
Beam	3306	Maintenance Concrete Superstructure Components	15	608	0	8	178	422
Bridge Rail	3318	Maintenance of Concrete Bridge Rail	4	304	0	1	11	292
Caps	3348	Maintenance of Concrete Substructure	2	168	0	2	22	144
Deck	3326	Maintenance of Concrete Deck	3880	4728	0	3751	84	893
Expansion Joints	3310	Maintenance of Standard Bridge Expansion Joints	1	128	1	0	0	127
Footing	3348	Maintenance of Concrete Substructure	48	36	0	36	0	0
Foundation Pile	3344	Maintenance To Timber Substrcutre	22	22	0	22	0	0
Piles and Columns	3348	Maintenance of Concrete Substructure	2	108	0	2	71	35

Priority Actions Request

Structure Number 230005

Span1

3306 Beam 1 Reinforced Concrete Girder

Priority Level	Defect Type	Quantity	Defect Description
2	Delamination/Spall	1	Span 1 Beam 1: 21" X 10" X 4" DEEP SPALL WITH EXPOSED REBAR IN LEFT FACE OF GIRDER AT PIER 1.

3306 Beam 3 Reinforced Concrete Girder

Priority Level	Defect Type	Quantity	Defect Description
2	Delamination/Spall	1	Span 1 Beam 3: 11" X 6" X 3" DEEP SPALL WITH EXPOSED REBAR IN RIGHT FACE OF GIRDER AT PIER 1.

Span3

3306 Beam 2 Reinforced Concrete Girder

Priority Level	Defect Type	Quantity	Defect Description
2	Delamination/Spall	1	Span 3 Beam 2: 9" X 2" X 2" DEEP SPALL WITH EXPOSED REBAR IN LEFT FACE OF GIRDER AT PIER 3.

Span4

3326 Deck Reinforced Concrete Deck

Priority Level	Defect Type	Quantity	Defect Description
2	Delamination/Spall	1	Span 4 Deck: 8" X 3" X 1/2" DEEP SPALL WITH EXPOSED REBAR IN TOP OF DECK IN WHEEL LINE OF EASTBOUND LANE, APPROXIMATELY 16" FROM END BENT 2 FILL FACE.

General Comments and Misc Items

General Comments and Misc Items

Priority Level	Defect Type	Quantity	Defect Description
2		1	MISSING DELINEATOR AT NORTHEAST CORNER.
2		1	MISSING DELINEATOR AT NORTHWEST CORNER.
2		250	50' SECTION WITH AREAS OF DECAY UP TO FULL DEPTH WITH EXPOSED FILL THROUGHOUT FACE OF SOUTHEAST WINGWALL, BEGINNING APPROXIMATELY 18' FROM NEAR END OF WINGWALL.

Priority Actions Request

Structure Number 230005

Element Condition and Maintenance Data

Structure Number: 230005

Inspection Date: 06/03/2020

Span 1 **Deck**
Reinforced Concrete Deck

Element Number	Element Name	Total Qty	CS1 Qty	CS2 Qty	CS3 Qty	CS4 Qty
12	Reinforced Concrete Deck	1,182	283	74	825	0 Square Feet

Element Number	Defect Type	Defect Description	CS	CS Qty	Maint Qty
12	Cracking (RC and Other)	UP TO 1/16" DIAGONAL CRACKS IN TOP OF DECK IN WESTBOUND LANE NEAR ABUTMENT 1 FILL FACE (SEE PHOTO)	3		16 Square Feet
12	Cracking (RC and Other)	UP TO 1/16" MAP CRACKS IN TOP OF DECK PRIMARILY IN TRAVEL LANES	3	825	825 Square Feet
12	Delamination/Spall	13" X 4" X 1" DEEP SPALL WITH EXPOSED REBAR AND 16" X 7" AREA OF DELAMINATION WITH UP TO 0.02" MAP CRACKS IN BOTTOM OF DECK IN BAY 1, APPROXIMATELY 7' FROM ABUTMENT 1 (SEE PHOTO)	3		2 Square Feet
12	Abrasion/Wear (PSC/RC)	751 SF OF WORN CONCRETE WITH EXPOSED AGGREGATE THROUGHOUT TOP OF DECK IN TRAVEL LANES	2		Square Feet
12	Cracking (RC and Other)	UP TO 0.012" DIAGONAL, TRANSVERSE, AND LONGITUDINAL CRACKS WITH AND WITHOUT EFFLORESCENCE IN BOTTOM OF DECK IN VARIOUS LOCATIONS THROUGHOUT	2		100 Square Feet
12	Delamination/Spall	12" X 2" X 1/2" DEEP SPALL IN BOTTOM OF DECK IN BAY 1, APPROXIMATELY 1' FROM ABUTMENT 1	2		1 Square Feet
12	Patched Areas	106" X 77" PATCH IN TOP OF DECK IN CENTERLINE OF ROADWAY NEAR ABUTMENT 1 FILL FACE (SEE PHOTO)	2	57	Square Feet
12	Patched Areas	52" X 43" PATCH IN BOTTOM OF DECK IN BAY 2 NEAR ABUTMENT 1 (SEE PHOTO)	2		Square Feet
12	Patched Areas	88" X 27" PATCH IN TOP OF DECK IN LEFT SHOULDER AND WESTBOUND LANE, APPROXIMATELY 13' FROM PIER 1 JOINT	2	17	Square Feet

General Comments

VEGETATION GROWTH ALONG ABUTMENT 1 AT LEFT END, EXTENDING TO BOTTOM OF DECK (SEE PHOTO)

Span 1 **Left Bridge Rail**
Concrete Railing

Element Number	Element Name	Total Qty	CS1 Qty	CS2 Qty	CS3 Qty	CS4 Qty
331	Reinforced Concrete Bridge Railing	38	33	5	0	0 Feet

Element Number	Defect Type	Defect Description	CS	CS Qty	Maint Qty
331	Cracking (RC and Other)	UP TO 0.025" TRANSVERSE AND VERTICAL CRACKS IN TOP AND FACE OF CURB NEAR ABUTMENT 1 FILL FACE (SEE PHOTO)	2	5	Feet

General Comments

Span 1 **Right Bridge Rail**
Concrete Railing

Element Number	Element Name	Total Qty	CS1 Qty	CS2 Qty	CS3 Qty	CS4 Qty
331	Reinforced Concrete Bridge Railing	38	35	3	0	0 Feet

Element Number	Defect Type	Defect Description	CS	CS Qty	Maint Qty
331	Cracking (RC and Other)	UP TO 0.025" TRANSVERSE AND VERTICAL CRACKS IN TOP AND FACE OF CURB ABUTMENT 1 FILL FACE	2	3	Feet

General Comments

Span 1**Beam 1****Reinforced Concrete Girder**

Element Number	Element Name	Total Qty	CS1 Qty	CS2 Qty	CS3 Qty	CS4 Qty
110	Reinforced Concrete Open Girder/Beam	38	21	16	1	0 Feet

Element Number	Defect Type	Defect Description	CS	CS Qty	Maint Qty
110	Cracking (RC and Other)	10" X 5" AREA OF DELAMINATION WITH UP TO 1/4" DIAGONAL CRACK IN RIGHT FACE OF GIRDER AT PIER 1 (SEE PHOTO)	3		1 Feet
110	Delamination/Spall	PAR: 21" X 10" X 4" DEEP SPALL WITH EXPOSED REBAR IN LEFT FACE OF GIRDER AT PIER 1 (SEE PHOTO)	3	1	1 Feet
110	Cracking (RC and Other)	6' SECTION OF UP TO 0.012" DIAGONAL CRACKS IN LEFT FACE OF GIRDER EXTENDING FROM ABUTMENT 1, CRACK APPROXIMATELY 18" FROM ABUTMENT 1 SHOWN IN PHOTO	2	6	Feet
110	Cracking (RC and Other)	UP TO 0.012" TRANSVERSE AND VERTICAL CRACKS IN BOTTOM AND BOTH FACES OF GIRDER IN VARIOUS LOCATIONS THROUGHOUT	2	10	Feet

General Comments

UP TO 1/16" HORIZONTAL CRACKS IN FACE OF PIER 1 DIAPHRAGM IN BAY 1

Span 1**Beam 2****Reinforced Concrete Girder**

Element Number	Element Name	Total Qty	CS1 Qty	CS2 Qty	CS3 Qty	CS4 Qty
110	Reinforced Concrete Open Girder/Beam	38	27	10	1	0 Feet

Element Number	Defect Type	Defect Description	CS	CS Qty	Maint Qty
110	Patched Area	12" X 5" FAILED REPAIR WITH UP TO 1/8" DIAGONAL CRACKS IN RIGHT FACE OF GIRDER AT PIER 1 (SEE PHOTO)	3	1	1 Feet
110	Cracking (RC and Other)	UP TO 0.012" TRANSVERSE AND VERTICAL CRACKS IN BOTTOM AND BOTH FACES OF GIRDER IN VARIOUS LOCATIONS THROUGHOUT	2	10	Feet

General Comments**Span 1****Beam 3****Reinforced Concrete Girder**

Element Number	Element Name	Total Qty	CS1 Qty	CS2 Qty	CS3 Qty	CS4 Qty
110	Reinforced Concrete Open Girder/Beam	38	26	11	1	0 Feet

Element Number	Defect Type	Defect Description	CS	CS Qty	Maint Qty
110	Delamination/Spall	PAR: 11" X 6" X 3" DEEP SPALL WITH EXPOSED REBAR IN RIGHT FACE OF GIRDER AT PIER 1 (SEE PHOTO)	3	1	1 Feet
110	Cracking (RC and Other)	12" X 4" X 5" AREA OF DELAMINATION WITH UP TO 0.02" LONGITUDINAL AND HORIZONTAL CRACKS IN BOTTOM AND LEFT FACE OF GIRDER AT PIER 1 (SEE PHOTO)	2	1	Feet
110	Cracking (RC and Other)	UP TO 0.012" TRANSVERSE AND VERTICAL CRACKS IN BOTTOM AND BOTH FACES OF GIRDER IN VARIOUS LOCATIONS THROUGHOUT	2	10	Feet

General Comments

Span 1 **Beam 4****Reinforced Concrete Girder**

Element Number	Element Name	Total Qty	CS1 Qty	CS2 Qty	CS3 Qty	CS4 Qty
110	Reinforced Concrete Open Girder/Beam	38	26	12	0	0 Feet

Element Number	Defect Type	Defect Description	CS	CS Qty	Maint Qty
110	Cracking (RC and Other)	UP TO 0.012" TRANSVERSE AND VERTICAL CRACKS IN BOTTOM AND BOTH FACES OF GIRDER IN VARIOUS LOCATIONS THROUGHOUT	2	12	Feet

General Comments**Span 2** **Deck****Reinforced Concrete Deck**

Element Number	Element Name	Total Qty	CS1 Qty	CS2 Qty	CS3 Qty	CS4 Qty
12	Reinforced Concrete Deck	1,182	205	1	976	0 Square Feet

Element Number	Defect Type	Defect Description	CS	CS Qty	Maint Qty
12	Cracking (RC and Other)	UP TO 1/16" DIAGONAL CRACK IN TOP OF DECK IN WESTBOUND LANE EXTENDING FROM PIER 1 JOINT	3	6	6 Square Feet
12	Cracking (RC and Other)	UP TO 1/16" MAP CRACKS IN TOP OF DECK PRIMARILY IN TRAVEL LANES	3	970	970 Square Feet
12	Abrasion/Wear (PSC/RC)	800 SF OF WORN CONCRETE WITH EXPOSED AGGREGATE THROUGHOUT TOP OF DECK IN TRAVEL LANES	2		Square Feet
12	Delamination/Spall	10" DIAMETER AREA OF DELAMINATION IN BOTTOM OF DECK IN BAY 3, ADJACENT TO GIRDER 4 NEAR MIDSPAN	2	1	1 Square Feet

General Comments

UP TO 1/2" VERTICAL MISALIGNMENT BETWEEN SPAN 2 AND 3 DECKS ALONG PIER 2 JOINT, CONDITION AT LEFT CURB SHOWN IN PHOTO

Span 2 **Right Bridge Rail****Concrete Railing**

Element Number	Element Name	Total Qty	CS1 Qty	CS2 Qty	CS3 Qty	CS4 Qty
331	Reinforced Concrete Bridge Railing	38	35	3	0	0 Feet

Element Number	Defect Type	Defect Description	CS	CS Qty	Maint Qty
331	Exposed Rebar	(3) AREAS OF EXPOSED REBAR UP TO 7" X 1" IN FACE OF RAIL APPROXIMATELY 7', 12', AND 13' FROM PIER 1 JOINT CONDITION 12' FROM PIER 1 JOINT SHOWN IN PHOTO	2	3	3 Feet

General Comments**Span 2** **Beam 1****Reinforced Concrete Girder**

Element Number	Element Name	Total Qty	CS1 Qty	CS2 Qty	CS3 Qty	CS4 Qty
110	Reinforced Concrete Open Girder/Beam	38	25	13	0	0 Feet

Element Number	Defect Type	Defect Description	CS	CS Qty	Maint Qty
110	Cracking (RC and Other)	UP TO 0.012" TRANSVERSE AND VERTICAL CRACKS IN BOTTOM AND BOTH FACES OF GIRDER IN VARIOUS LOCATIONS THROUGHOUT	2	10	Feet
110	Patched Area	(2) REPAIRS UP TO 14" X 6" IN LEFT FACE OF GIRDER, APPROXIMATELY 1' AND 3' FROM PIER 1 (SEE PHOTO)	2	3	Feet

General Comments**Span 2****Beam 2****Reinforced Concrete Girder**

Element Number	Element Name	Total Qty	CS1 Qty	CS2 Qty	CS3 Qty	CS4 Qty
110	Reinforced Concrete Open Girder/Beam	38	26	12	0	0 Feet

Element Number	Defect Type	Defect Description	CS	CS Qty	Maint Qty
110	Cracking (RC and Other)	6" X 5" AREA OF DELAMINATION WITH UP TO 0.035" DIAGONAL CRACKS IN RIGHT FACE OF GIRDER AT PIER 1	2		Feet
110	Cracking (RC and Other)	UP TO 0.012" TRANSVERSE AND VERTICAL CRACKS IN BOTTOM AND BOTH FACES OF GIRDER IN VARIOUS LOCATIONS THROUGHOUT	2	10	Feet
110	Cracking (RC and Other)	UP TO 0.035" DIAGONAL CRACK IN LEFT FACE OF GIRDER AT PIER 1	2		Feet
110	Delamination/Spall	16" X 4" X 4" AREA OF DELAMINATION WITH UP TO 0.025" LONGITUDINAL AND HORIZONTAL CRACKS IN BOTTOM AND RIGHT FACE OF GIRDER AT PIER 1 (SEE PHOTO)	2	2	2 Feet

General Comments**Span 2****Beam 3****Reinforced Concrete Girder**

Element Number	Element Name	Total Qty	CS1 Qty	CS2 Qty	CS3 Qty	CS4 Qty
110	Reinforced Concrete Open Girder/Beam	38	28	10	0	0 Feet

Element Number	Defect Type	Defect Description	CS	CS Qty	Maint Qty
110	Cracking (RC and Other)	UP TO 0.012" TRANSVERSE AND VERTICAL CRACKS IN BOTTOM AND BOTH FACES OF GIRDER IN VARIOUS LOCATIONS THROUGHOUT	2	10	Feet

General Comments

UP TO 1/16" HORIZONTAL CRACKS IN FACE OF PIER 1 DIAPHRAGM IN BAY 3, ADJACENT TO GIRDER 4 (SEE PHOTO)

Span 2**Beam 4****Reinforced Concrete Girder**

Element Number	Element Name	Total Qty	CS1 Qty	CS2 Qty	CS3 Qty	CS4 Qty
110	Reinforced Concrete Open Girder/Beam	38	26	11	1	0 Feet

Element Number	Defect Type	Defect Description	CS	CS Qty	Maint Qty
110	Cracking (RC and Other)	11" X 8" AREA OF DELAMINATION WITH UP TO 1/8" DIAGONAL CRACKS IN LEFT FACE OF GIRDER AT PIER 1	3	1	1 Feet
110	Efflorescence/Rust Staining	UP TO 0.025" DIAGONAL CRACKS WITH RUST STAINING AND 2" X 1" AREA OF EXPOSED REBAR IN RIGHT FACE OF GIRDER AT PIER 1 (SEE PHOTO)	3		1 Feet
110	Cracking (RC and Other)	2' OF UP TO 0.035" HORIZONTAL CRACKS IN LEFT FACE OF GIRDER AT PIER 1	2	1	Feet
110	Cracking (RC and Other)	UP TO 0.012" TRANSVERSE AND VERTICAL CRACKS IN BOTTOM AND BOTH FACES OF GIRDER IN VARIOUS LOCATIONS THROUGHOUT	2	10	Feet

General Comments

Span 3 Deck**Reinforced Concrete Deck**

Element Number	Element Name	Total Qty	CS1 Qty	CS2 Qty	CS3 Qty	CS4 Qty
12	Reinforced Concrete Deck	1,182	205	6	971	0 Square Feet

Element Number	Defect Type	Defect Description	CS	CS Qty	Maint Qty
12	Cracking (RC and Other)	UP TO 1/16" MAP CRACKS IN TOP OF DECK PRIMARILY IN TRAVEL LANES (SEE PHOTO)	3	970	970 Square Feet
12	Delamination/Spall	10" X 8" X 1" DEEP SPALL WITH EXPOSED REBAR IN BOTTOM OF RIGHT OVERHANG NEAR PIER 3 (SEE PHOTO)	3	1	1 Square Feet
12	Abrasion/Wear (PSC/RC)	800 SF OF WORN CONCRETE WITH EXPOSED AGGREGATE THROUGHOUT TOP OF DECK IN TRAVEL LANES	2		Square Feet
12	Cracking (RC and Other)	UP TO 0.035" DIAGONAL CRACKS IN TOP OF DECK EXTENDING FROM PIER 2 JOINT IN WESTBOUND LANE	2	6	6 Square Feet

General Comments**Span 3 Right Bridge Rail****Concrete Railing**

Element Number	Element Name	Total Qty	CS1 Qty	CS2 Qty	CS3 Qty	CS4 Qty
331	Reinforced Concrete Bridge Railing	38	37	0	1	0 Feet

Element Number	Defect Type	Defect Description	CS	CS Qty	Maint Qty
331	Cracking (RC and Other)	UP TO 1/16" DIAGONAL CRACK IN TOP AND FACE OF CURB, APPROXIMATELY 4' FROM PIER 3 JOINT (SEE PHOTO)	3	1	1 Feet

General Comments**Span 3 Beam 1****Reinforced Concrete Girder**

Element Number	Element Name	Total Qty	CS1 Qty	CS2 Qty	CS3 Qty	CS4 Qty
110	Reinforced Concrete Open Girder/Beam	38	27	11	0	0 Feet

Element Number	Defect Type	Defect Description	CS	CS Qty	Maint Qty
110	Cracking (RC and Other)	UP TO 0.012" TRANSVERSE AND VERTICAL CRACKS IN BOTTOM AND BOTH FACES OF GIRDER IN VARIOUS LOCATIONS THROUGHOUT	2	10	Feet
110	Exposed Rebar	1" DIAMETER X 1/4" DEEP AREA OF EXPOSED REBAR IN LEFT FACE OF GIRDER AT PIER 3	2	1	1 Feet

General Comments**Span 3 Beam 2****Reinforced Concrete Girder**

Element Number	Element Name	Total Qty	CS1 Qty	CS2 Qty	CS3 Qty	CS4 Qty
110	Reinforced Concrete Open Girder/Beam	38	26	10	2	0 Feet

Element Number	Defect Type	Defect Description	CS	CS Qty	Maint Qty
110	Delamination/Spall	PAR: 9" X 2" X 2" DEEP SPALL WITH EXPOSED REBAR IN LEFT FACE OF GIRDER AT PIER 3 (SEE PHOTO)	3	1	1 Feet

Structure Number: **230005**Inspection Date: **06/03/2020**

110	Patched Area	13" X 8" FAILED REPAIR WITH UP TO 1/4" DIAGONAL CRACK IN RIGHT FACE OF GIRDER AT PIER 3 (SEE PHOTO)	3	1	1	Feet
110	Cracking (RC and Other)	UP TO 0.012" TRANSVERSE AND VERTICAL CRACKS IN BOTTOM AND BOTH FACES OF GIRDER IN VARIOUS LOCATIONS THROUGHOUT	2	10		Feet

General Comments**Span 3 Beam 3****Reinforced Concrete Girder**

Element Number	Element Name	Total Qty	CS1 Qty	CS2 Qty	CS3 Qty	CS4 Qty
110	Reinforced Concrete Open Girder/Beam	38	28	10	0	0 Feet

Element Number	Defect Type	Defect Description	CS	CS Qty	Maint Qty
110	Cracking (RC and Other)	UP TO 0.012" TRANSVERSE AND VERTICAL CRACKS IN BOTTOM AND BOTH FACES OF GIRDER IN VARIOUS LOCATIONS THROUGHOUT	2	10	Feet

General Comments**Span 3 Beam 4****Reinforced Concrete Girder**

Element Number	Element Name	Total Qty	CS1 Qty	CS2 Qty	CS3 Qty	CS4 Qty
110	Reinforced Concrete Open Girder/Beam	38	27	10	1	0 Feet

Element Number	Defect Type	Defect Description	CS	CS Qty	Maint Qty
110	Cracking (RC and Other)	10" X 5" AREA OF DELAMINATION WITH UP TO 1/16" VERTICAL AND DIAGONAL CRACKS IN LEFT FACE OF GIRDER AT PIER 2	3	1	1 Feet
110	Cracking (RC and Other)	UP TO 0.012" TRANSVERSE AND VERTICAL CRACKS IN BOTTOM AND BOTH FACES OF GIRDER IN VARIOUS LOCATIONS THROUGHOUT	2	10	Feet

General Comments**Span 3 Expansion Joint 2****Standard Joint**

Element Number	Element Name	Total Qty	CS1 Qty	CS2 Qty	CS3 Qty	CS4 Qty
301	Pourable Joint Seal	32	31	0	0	1 Feet

Element Number	Defect Type	Defect Description	CS	CS Qty	Maint Qty
301	Seal Damage	9" SECTION OF MISSING JOINT MATERIAL ALONG PIER 2 JOINT AT CENTERLINE OF ROADWAY (SEE PHOTO)	4	1	1 Feet

General Comments**Span 4 Deck****Reinforced Concrete Deck**

Element Number	Element Name	Total Qty	CS1 Qty	CS2 Qty	CS3 Qty	CS4 Qty
12	Reinforced Concrete Deck	1,182	200	3	979	0 Square Feet

Element Number	Defect Type	Defect Description	CS	CS Qty	Maint Qty
----------------	-------------	--------------------	----	--------	-----------

Structure Number: **230005**

Inspection Date: **06/03/2020**

12	Cracking (RC and Other)	UP TO 1/16" DIAGONAL CRACKS IN TOP OF DECK NEAR ABUTMENT 2 FILL FACE IN EASTBOUND LANE	3	8	8	Square Feet
12	Cracking (RC and Other)	UP TO 1/16" MAP CRACKS IN TOP OF DECK PRIMARILY IN TRAVEL LANES	3	970	970	Square Feet
12	Delamination/Spall	6" X 6" X 1" DEEP SPALL WITH EXPOSED REBAR IN BOTTOM OF LEFT OVERHANG, APPROXIMATELY 11' FROM PIER 3	3	1	1	Square Feet
12	Abrasion/Wear (PSC/RC)	800 SF OF WORN CONCRETE WITH EXPOSED AGGREGATE THROUGHOUT TOP OF DECK IN TRAVEL LANES	2			Square Feet
12	Delamination/Spall	(2) SPALLS WITH EXPOSED REBAR UP TO 8" X 3" X 1" DEEP ALONG RIGHT EDGE OF DECK NEAR ABUTMENT 2	2	2	2	Square Feet
12	Delamination/Spall	PAR: 8" X 3" X 1/2" DEEP SPALL WITH EXPOSED REBAR IN TOP OF DECK IN WHEEL LINE OF EASTBOUND LANE, APPROXIMATELY 16" FROM ABUTMENT 2 FILL FACE (SEE PHOTO)	2	1	1	Square Feet

General Comments

Span 4 Beam 1
Reinforced Concrete Girder

Element Number	Element Name	Total Qty	CS1 Qty	CS2 Qty	CS3 Qty	CS4 Qty
110	Reinforced Concrete Open Girder/Beam	38	27	11	0	0 Feet

Element Number	Defect Type	Defect Description	CS	CS Qty	Maint Qty
110	Cracking (RC and Other)	UP TO 0.012" TRANSVERSE AND VERTICAL CRACKS IN BOTTOM AND BOTH FACES OF GIRDER IN VARIOUS LOCATIONS THROUGHOUT, CONDITION ON RIGHT SIDE NEAR MIDSPAN SHOWN IN PHOTO	2	10	Feet
110	Delamination/Spall	(2) SPALLS WITH EXPOSED REBAR UP TO 3" DIAMETER X 1/2" DEEP IN LEFT FACE OF GIRDER, APPROXIMATELY 3' FROM PIER 3 (SEE PHOTO)	2	1	1 Feet

General Comments

8" X 5" X 1" DEEP SPALL WITH EXPOSED REBAR IN BOTTOM OF PIER 3 DIAPHRAGM IN BAY 1 (SEE PHOTO)

Span 4 Beam 2
Reinforced Concrete Girder

Element Number	Element Name	Total Qty	CS1 Qty	CS2 Qty	CS3 Qty	CS4 Qty
110	Reinforced Concrete Open Girder/Beam	38	27	11	0	0 Feet

Element Number	Defect Type	Defect Description	CS	CS Qty	Maint Qty
110	Cracking (RC and Other)	UP TO 0.012" TRANSVERSE AND VERTICAL CRACKS IN BOTTOM AND BOTH FACES OF GIRDER IN VARIOUS LOCATIONS THROUGHOUT	2	10	Feet
110	Delamination/Spall	7" X 2" X 1" DEEP SPALL IN LEFT FACE OF GIRDER AT PIER 3	2	1	1 Feet

General Comments

Span 4 Beam 3
Reinforced Concrete Girder

Element Number	Element Name	Total Qty	CS1 Qty	CS2 Qty	CS3 Qty	CS4 Qty
110	Reinforced Concrete Open Girder/Beam	38	28	10	0	0 Feet

Element Number	Defect Type	Defect Description	CS	CS Qty	Maint Qty
110	Cracking (RC and Other)	UP TO 0.012" TRANSVERSE AND VERTICAL CRACKS IN BOTTOM AND BOTH FACES OF GIRDER IN VARIOUS LOCATIONS THROUGHOUT	2	10	Feet

General Comments

Span 4 **Beam 4****Reinforced Concrete Girder**

Element Number	Element Name	Total Qty	CS1 Qty	CS2 Qty	CS3 Qty	CS4 Qty
110	Reinforced Concrete Open Girder/Beam	38	27	10	1	0 Feet

Element Number	Defect Type	Defect Description	CS	CS Qty	Maint Qty
110	Patched Area	13" X 10" FAILED REPAIR WITH UP TO 1/8" DIAGONAL CRACKS IN LEFT FACE OF GIRDER AT PIER 3	3	1	1 Feet
110	Cracking (RC and Other)	UP TO 0.012" TRANSVERSE AND VERTICAL CRACKS IN BOTTOM AND BOTH FACES OF GIRDER IN VARIOUS LOCATIONS THROUGHOUT	2	10	Feet

General Comments

Bent 1 **Cap 1****Reinforced Concrete Pier Cap**

Element Number	Element Name	Total Qty	CS1 Qty	CS2 Qty	CS3 Qty	CS4 Qty
234	Reinforced Concrete Pier Cap	36	34	0	2	0 Feet

Element Number	Defect Type	Defect Description	CS	CS Qty	Maint Qty
234	Patched Area	21" X 12" FAILED REPAIR WITH UP TO 0.012" MAP CRACKS AND (2) SPALLS UP TO 12" X 4" X 1/2" DEEP IN SPAN 1 FACE OF CAP BENEATH GIRDER 3 (SEE PHOTO)	3	2	2 Feet

General Comments

Bent 1 **Pile 1****Reinforced Concrete Pier Wall**

Element Number	Element Name	Total Qty	CS1 Qty	CS2 Qty	CS3 Qty	CS4 Qty
210	Reinforced Concrete Pier Wall	36	35	0	1	0 Feet

Element Number	Defect Type	Defect Description	CS	CS Qty	Maint Qty
210	Delamination/Spall	12" X 6" X 1" DEEP SPALL WITH EXPOSED REBAR IN SPAN 1 FACE OF PIER WALL, APPROXIMATELY 1' FROM BOTTOM OF CAP (SEE PHOTO)	3	1	1 Feet
210	Delamination/Spall	16" X 14" X 2" DEEP SPALL IN SPAN 2 FACE OF PIER WALL, APPROXIMATELY 2' FROM GROUND LINE	3	2	2 Feet
210	Abrasion/Wear (PSC/RC)	36' OF UP TO 7' HIGH SCALING WITH EXPOSED AGGREGATE THROUGHOUT PIER WALL	2	32	Feet
210	Delamination/Spall	4" DIAMETER X 1" DEEP SPALL WITH EXPOSED REBAR IN SPAN 2 FACE OF PIER WALL, APPROXIMATELY 3' FROM GROUND LINE	2	1	1 Feet

General Comments

End Bent 1 **Abutment****Reinforced Concrete Abutment**

Element Number	Element Name	Total Qty	CS1 Qty	CS2 Qty	CS3 Qty	CS4 Qty
215	Reinforced Concrete Abutment	54	20	34	0	0 Feet

Element Number	Defect Type	Defect Description	CS	CS Qty	Maint Qty
----------------	-------------	--------------------	----	--------	-----------

Structure Number: **230005**Inspection Date: **06/03/2020**

215	Abrasion/Wear (PSC/RC)	34' OF UP TO 32" HIGH SCALING WITH EXPOSED AGGREGATE THROUGHOUT FACE OF ABUTMENT FROM BENEATH BAY 1 TO RIGHT END	2	25	Feet
215	Cracking (RC and Other)	UP TO 0.012" LONGITUDINAL AND VERTICAL CRACKS IN FACE OF CURTAIN WALL IN VARIOUS LOCATIONS THROUGHOUT	2	5	Feet
215	Cracking (RC and Other)	UP TO 0.016" VERTICAL CRACKS IN FACE OF ABUTMENT IN VARIOUS LOCATIONS, CRACK BENEATH BAY 2 SHOWN IN PHOTO	2	4	Feet

General Comments

End Bent 1 Cap 1**Reinforced Concrete Pier Cap**

Element Number	Element Name	Total Qty	CS1 Qty	CS2 Qty	CS3 Qty	CS4 Qty
234	Reinforced Concrete Pier Cap	30	25	5	0	0 Feet

Element Number	Defect Type	Defect Description	CS	CS Qty	Maint Qty
234	Cracking (RC and Other)	UP TO 0.012" VERTICAL CRACKS IN FACE OF CAP IN VARIOUS LOCATIONS THROUGHOUT, CRACK IN BAY 2 TO LEFT OF GIRDER 3 SHOWN IN PHOTO	2	5	Feet

General Comments

Bent 2 Cap 1**Reinforced Concrete Pier Cap**

Element Number	Element Name	Total Qty	CS1 Qty	CS2 Qty	CS3 Qty	CS4 Qty
234	Reinforced Concrete Pier Cap	36	29	7	0	0 Feet

Element Number	Defect Type	Defect Description	CS	CS Qty	Maint Qty
234	Patched Area	APPROXIMATELY 7' X 12" REPAIR IN SPAN 2 FACE OF CAP BENEATH BAY 1 (SEE PHOTO)	2	7	Feet

General Comments

Bent 2 Pile 1**Reinforced Concrete Pier Wall**

Element Number	Element Name	Total Qty	CS1 Qty	CS2 Qty	CS3 Qty	CS4 Qty
210	Reinforced Concrete Pier Wall	36	0	35	1	0 Feet

Element Number	Defect Type	Defect Description	CS	CS Qty	Maint Qty
210	Delamination/Spall	11" X 4" X 2" DEEP SPALL IN SPAN 2 FACE OF PIER WALL, APPROXIMATELY 2' FROM TOP OF FOOTING BENEATH BAY 1	3	1	1 Feet
210	Abrasion/Wear (PSC/RC)	36' OF UP TO 7' HIGH SCALING WITH EXPOSED AGGREGATE THROUGHOUT PIER WALL	2	32	Feet
210	Patched Area	33" X 16" REPAIR IN SPAN 3 FACE OF PIER WALL AT TOP OF FOOTING BENEATH GIRDER 4 (SEE PHOTO)	2	3	Feet

General Comments

Bent 2 Reinforced Concrete Footing 1**Reinforced Concrete Footing**

Element Number	Element Name	Total Qty	CS1 Qty	CS2 Qty	CS3 Qty	CS4 Qty
220	Reinforced Concrete Pile Cap/Footing	36	0	0	36	0 Feet

Element Number	Defect Type	Defect Description	CS	CS Qty	Maint Qty
220	Delamination/Spall	UNDERWATER 3/9/20 - 12-SPALLS AROUND TOP PERIMETER OF FOOTING 4" - 8" DIAMETER X 2" DEEP	3		12 Feet
220	Scour	UNDERWATER 3/9/20 - FOOTING IS COMPLETELY UNDERMINED EXPOSING FOUNDATION PILES(MEASUREMENTS TAKEN FROM BOTTOM OF FOOTING TO MUDLINE) SOUTH.WEST. CORNER 2.0', NORTH.WEST. CORNER 1.6', CAP/LOOKING OF WEST FACE 2.2', SOUTH.EAST. CORNER 2.0', NORTH.EAST. CORNER 0.8', CAP/LOOKING OF EAST FACE 1.0'	3	36	36 Feet
220	Abrasion/Wear (PSC/RC)	UNDERWATER 3/9/20 - WATER ABRASION WITH COARSE AGGREGATE EXPOSED TO 1/4"	2		Feet

General Comments

Bent 2 Foundation Pile 1**Timber Foundation Pile**

Element Number	Element Name	Total Qty	CS1 Qty	CS2 Qty	CS3 Qty	CS4 Qty
228	Timber Pile	1	0	0	1	0 Each

Element Number	Defect Type	Defect Description	CS	CS Qty	Maint Qty
228	Decay/Section Loss	UNDERWATER 3/9/20 - SURFACE SOFT TO 1/2" WITH AREAS OF SPOT DECAY TO 1.5" DEEP, LIMITED ACCESS DUE TO LOW CLEARANCE UNDER FOOTING	3	1	1 Each

General Comments

Bent 2 Foundation Pile 2**Timber Foundation Pile**

Element Number	Element Name	Total Qty	CS1 Qty	CS2 Qty	CS3 Qty	CS4 Qty
228	Timber Pile	1	0	0	1	0 Each

Element Number	Defect Type	Defect Description	CS	CS Qty	Maint Qty
228	Decay/Section Loss	UNDERWATER 3/9/20 - SURFACE SOFT TO 1/2" WITH AREAS OF SPOT DECAY TO 1.5" DEEP, LIMITED ACCESS DUE TO LOW CLEARANCE UNDER FOOTING	3	1	1 Each

General Comments

Bent 2 Foundation Pile 3**Timber Foundation Pile**

Element Number	Element Name	Total Qty	CS1 Qty	CS2 Qty	CS3 Qty	CS4 Qty
228	Timber Pile	1	0	0	1	0 Each

Element Number	Defect Type	Defect Description	CS	CS Qty	Maint Qty
228	Decay/Section Loss	UNDERWATER 3/9/20 - SURFACE SOFT TO 1/2" WITH AREAS OF SPOT DECAY TO 1.5" DEEP, LIMITED ACCESS DUE TO LOW CLEARANCE UNDER FOOTING	3	1	1 Each

General Comments

Bent 2 Foundation Pile 4**Timber Foundation Pile**

Element Number	Element Name	Total Qty	CS1 Qty	CS2 Qty	CS3 Qty	CS4 Qty
228	Timber Pile	1	0	0	1	0 Each

Element Number	Defect Type	Defect Description	CS	CS Qty	Maint Qty
228	Decay/Section Loss	UNDERWATER 3/9/20 - SURFACE SOFT TO 1/2" WITH AREAS OF SPOT DECAY TO 1.5" DEEP, LIMITED ACCESS DUE TO LOW CLEARANCE UNDER FOOTING	3	1	1 Each

General Comments

Bent 2 Foundation Pile 5**Timber Foundation Pile**

Element Number	Element Name	Total Qty	CS1 Qty	CS2 Qty	CS3 Qty	CS4 Qty
228	Timber Pile	1	0	0	1	0 Each

Element Number	Defect Type	Defect Description	CS	CS Qty	Maint Qty
228	Decay/Section Loss	UNDERWATER 3/9/20 - SURFACE SOFT TO 1/2" WITH AREAS OF SPOT DECAY TO 1.5" DEEP, LIMITED ACCESS DUE TO LOW CLEARANCE UNDER FOOTING	3	1	1 Each

General Comments

Bent 2 Foundation Pile 6**Timber Foundation Pile**

Element Number	Element Name	Total Qty	CS1 Qty	CS2 Qty	CS3 Qty	CS4 Qty
228	Timber Pile	1	0	0	1	0 Each

Element Number	Defect Type	Defect Description	CS	CS Qty	Maint Qty
228	Decay/Section Loss	UNDERWATER 3/9/20 - SURFACE SOFT TO 1/2" WITH AREAS OF SPOT DECAY TO 1.5" DEEP, LIMITED ACCESS DUE TO LOW CLEARANCE UNDER FOOTING	3	1	1 Each

General Comments

Bent 2 Foundation Pile 7**Timber Foundation Pile**

Element Number	Element Name	Total Qty	CS1 Qty	CS2 Qty	CS3 Qty	CS4 Qty
228	Timber Pile	1	0	0	1	0 Each

Element Number	Defect Type	Defect Description	CS	CS Qty	Maint Qty
228	Decay/Section Loss	UNDERWATER 3/9/20 - SURFACE SOFT TO 1/2" WITH AREAS OF SPOT DECAY TO 1.5" DEEP, LIMITED ACCESS DUE TO LOW CLEARANCE UNDER FOOTING	3	1	1 Each

General Comments

Bent 2 Foundation Pile 8**Timber Foundation Pile**

Element Number	Element Name	Total Qty	CS1 Qty	CS2 Qty	CS3 Qty	CS4 Qty
228	Timber Pile	1	0	0	1	0 Each

Element Number	Defect Type	Defect Description	CS	CS Qty	Maint Qty
228	Decay/Section Loss	UNDERWATER 3/9/20 - SURFACE SOFT TO 1/2" WITH AREAS OF SPOT DECAY TO 1.5" DEEP, LIMITED ACCESS DUE TO LOW CLEARANCE UNDER FOOTING	3	1	1 Each

General Comments

Bent 2 Foundation Pile 9**Timber Foundation Pile**

Element Number	Element Name	Total Qty	CS1 Qty	CS2 Qty	CS3 Qty	CS4 Qty
228	Timber Pile	1	0	0	1	0 Each

Element Number	Defect Type	Defect Description	CS	CS Qty	Maint Qty
228	Decay/Section Loss	UNDERWATER 3/9/20 - SURFACE SOFT TO 1/2" WITH AREAS OF SPOT DECAY TO 1.5" DEEP, LIMITED ACCESS DUE TO LOW CLEARANCE UNDER FOOTING	3	1	1 Each

General Comments

Bent 2 Foundation Pile 10**Timber Foundation Pile**

Element Number	Element Name	Total Qty	CS1 Qty	CS2 Qty	CS3 Qty	CS4 Qty
228	Timber Pile	1	0	0	1	0 Each

Element Number	Defect Type	Defect Description	CS	CS Qty	Maint Qty
228	Decay/Section Loss	UNDERWATER 3/9/20 - SURFACE SOFT TO 1/2" WITH AREAS OF SPOT DECAY TO 1.5" DEEP, LIMITED ACCESS DUE TO LOW CLEARANCE UNDER FOOTING	3	1	1 Each

General Comments

Bent 2 Foundation Pile 11**Timber Foundation Pile**

Element Number	Element Name	Total Qty	CS1 Qty	CS2 Qty	CS3 Qty	CS4 Qty
228	Timber Pile	1	0	0	1	0 Each

Element Number	Defect Type	Defect Description	CS	CS Qty	Maint Qty
228	Decay/Section Loss	UNDERWATER 3/9/20 - SURFACE SOFT TO 1/2" WITH AREAS OF SPOT DECAY TO 1.5" DEEP, LIMITED ACCESS DUE TO LOW CLEARANCE UNDER FOOTING	3	1	1 Each

General Comments

Bent 2 Foundation Pile 12**Timber Foundation Pile**

Element Number	Element Name	Total Qty	CS1 Qty	CS2 Qty	CS3 Qty	CS4 Qty
228	Timber Pile	1	0	0	1	0 Each

Element Number	Defect Type	Defect Description	CS	CS Qty	Maint Qty
228	Decay/Section Loss	UNDERWATER 3/9/20 - SURFACE SOFT TO 1/2" WITH AREAS OF SPOT DECAY TO 1.5" DEEP, LIMITED ACCESS DUE TO LOW CLEARANCE UNDER FOOTING	3	1	1 Each

General Comments

Bent 2 Foundation Pile 13**Timber Foundation Pile**

Element Number	Element Name	Total Qty	CS1 Qty	CS2 Qty	CS3 Qty	CS4 Qty
228	Timber Pile	1	0	0	1	0 Each

Element Number	Defect Type	Defect Description	CS	CS Qty	Maint Qty
228	Decay/Section Loss	UNDERWATER 3/9/20 - SURFACE SOFT TO 1/2" WITH AREAS OF SPOT DECAY TO 1.5" DEEP, LIMITED ACCESS DUE TO LOW CLEARANCE UNDER FOOTING	3	1	1 Each

General Comments

Bent 2 Foundation Pile 14**Timber Foundation Pile**

Element Number	Element Name	Total Qty	CS1 Qty	CS2 Qty	CS3 Qty	CS4 Qty
228	Timber Pile	1	0	0	1	0 Each

Element Number	Defect Type	Defect Description	CS	CS Qty	Maint Qty
228	Decay/Section Loss	UNDERWATER 3/9/20 - SURFACE SOFT TO 1/2" WITH AREAS OF SPOT DECAY TO 1.5" DEEP, LIMITED ACCESS DUE TO LOW CLEARANCE UNDER FOOTING	3	1	1 Each

General Comments

Bent 2 Foundation Pile 15**Timber Foundation Pile**

Element Number	Element Name	Total Qty	CS1 Qty	CS2 Qty	CS3 Qty	CS4 Qty
228	Timber Pile	1	0	0	1	0 Each

Element Number	Defect Type	Defect Description	CS	CS Qty	Maint Qty
228	Decay/Section Loss	UNDERWATER 3/9/20 - SURFACE SOFT TO 1/2" WITH AREAS OF SPOT DECAY TO 1.5" DEEP, LIMITED ACCESS DUE TO LOW CLEARANCE UNDER FOOTING	3	1	1 Each

General Comments

Bent 2 Foundation Pile 16
Timber Foundation Pile

Element Number	Element Name	Total Qty	CS1 Qty	CS2 Qty	CS3 Qty	CS4 Qty
228	Timber Pile	1	0	0	1	0 Each

Element Number	Defect Type	Defect Description	CS	CS Qty	Maint Qty
228	Decay/Section Loss	UNDERWATER 3/9/20 - SURFACE SOFT TO 1/2" WITH AREAS OF SPOT DECAY TO 1.5" DEEP, LIMITED ACCESS DUE TO LOW CLEARANCE UNDER FOOTING	3	1	1 Each

General Comments

Bent 2 Foundation Pile 17
Timber Foundation Pile

Element Number	Element Name	Total Qty	CS1 Qty	CS2 Qty	CS3 Qty	CS4 Qty
228	Timber Pile	1	0	0	1	0 Each

Element Number	Defect Type	Defect Description	CS	CS Qty	Maint Qty
228	Decay/Section Loss	UNDERWATER 3/9/20 - SURFACE SOFT TO 1/2" WITH AREAS OF SPOT DECAY TO 1.5" DEEP, LIMITED ACCESS DUE TO LOW CLEARANCE UNDER FOOTING	3	1	1 Each

General Comments

Bent 2 Foundation Pile 18
Timber Foundation Pile

Element Number	Element Name	Total Qty	CS1 Qty	CS2 Qty	CS3 Qty	CS4 Qty
228	Timber Pile	1	0	0	1	0 Each

Element Number	Defect Type	Defect Description	CS	CS Qty	Maint Qty
228	Decay/Section Loss	UNDERWATER 3/9/20 - SURFACE SOFT TO 1/2" WITH AREAS OF SPOT DECAY TO 1.5" DEEP, LIMITED ACCESS DUE TO LOW CLEARANCE UNDER FOOTING	3	1	1 Each

General Comments

Bent 2 Foundation Pile 19
Timber Foundation Pile

Element Number	Element Name	Total Qty	CS1 Qty	CS2 Qty	CS3 Qty	CS4 Qty
228	Timber Pile	1	0	0	1	0 Each

Element Number	Defect Type	Defect Description	CS	CS Qty	Maint Qty
228	Decay/Section Loss	UNDERWATER 3/9/20 - SURFACE SOFT TO 1/2" WITH AREAS OF SPOT DECAY TO 1.5" DEEP, LIMITED ACCESS DUE TO LOW CLEARANCE UNDER FOOTING	3	1	1 Each

General Comments

Bent 2 Foundation Pile 20**Timber Foundation Pile**

Element Number	Element Name	Total Qty	CS1 Qty	CS2 Qty	CS3 Qty	CS4 Qty
228	Timber Pile	1	0	0	1	0 Each

Element Number	Defect Type	Defect Description	CS	CS Qty	Maint Qty
228	Decay/Section Loss	UNDERWATER 3/9/20 - SURFACE SOFT TO 1/2" WITH AREAS OF SPOT DECAY TO 1.5" DEEP, LIMITED ACCESS DUE TO LOW CLEARANCE UNDER FOOTING	3	1	1 Each

General Comments

Bent 2 Foundation Pile 21**Timber Foundation Pile**

Element Number	Element Name	Total Qty	CS1 Qty	CS2 Qty	CS3 Qty	CS4 Qty
228	Timber Pile	1	0	0	1	0 Each

Element Number	Defect Type	Defect Description	CS	CS Qty	Maint Qty
228	Decay/Section Loss	UNDERWATER 3/9/20 - SURFACE SOFT TO 1/2" WITH AREAS OF SPOT DECAY TO 1.5" DEEP, LIMITED ACCESS DUE TO LOW CLEARANCE UNDER FOOTING	3	1	1 Each

General Comments

Bent 2 Foundation Pile 22**Timber Foundation Pile**

Element Number	Element Name	Total Qty	CS1 Qty	CS2 Qty	CS3 Qty	CS4 Qty
228	Timber Pile	1	0	0	1	0 Each

Element Number	Defect Type	Defect Description	CS	CS Qty	Maint Qty
228	Decay/Section Loss	UNDERWATER 3/9/20 - SURFACE SOFT TO 1/2" WITH AREAS OF SPOT DECAY TO 1.5" DEEP, LIMITED ACCESS DUE TO LOW CLEARANCE UNDER FOOTING	3	1	1 Each

General Comments

End Bent 2 Abutment**Reinforced Concrete Abutment**

Element Number	Element Name	Total Qty	CS1 Qty	CS2 Qty	CS3 Qty	CS4 Qty
215	Reinforced Concrete Abutment	54	9	45	0	0 Feet

Element Number	Defect Type	Defect Description	CS	CS Qty	Maint Qty
215	Abrasion/Wear (PSC/RC)	45' OF UP TO 55" HIGH SCALING WITH EXPOSED AGGREGATE THROUGHOUT FACE OF ABUTMENT, EXTENDING FROM BAY 1 TO RIGHT END	2	43	Feet
215	Cracking (RC and Other)	UP TO 0.025" VERTICAL CRACKS IN FACE OF CURTAIN WALL AT RIGHT END (SEE PHOTO)	2	2	Feet

General Comments

End Bent 2 Cap 1**Reinforced Concrete Pier Cap**

Element Number	Element Name	Total Qty	CS1 Qty	CS2 Qty	CS3 Qty	CS4 Qty	
234	Reinforced Concrete Pier Cap	30	22	8	0	0	Feet

Element Number	Defect Type	Defect Description	CS	CS Qty	Maint Qty	
234	Cracking (RC and Other)	UP TO 0.012" VERTICAL CRACKS IN FACE OF CAP IN VARIOUS LOCATIONS THROUGHOUT	2	8		Feet

General Comments

Bent 3 Cap 1**Reinforced Concrete Pier Cap**

Element Number	Element Name	Total Qty	CS1 Qty	CS2 Qty	CS3 Qty	CS4 Qty	
234	Reinforced Concrete Pier Cap	36	34	2	0	0	Feet

Element Number	Defect Type	Defect Description	CS	CS Qty	Maint Qty	
234	Cracking (RC and Other)	UP TO 0.012" VERTICAL CRACK IN SPAN 3 FACE OF CAP BENEATH GIRDER 1	2	1		Feet
234	Patched Area	12" X 12" REPAIR IN SPAN 3 FACE OF CAP BENEATH GIRDER 2	2	1		Feet

General Comments

Bent 3 Pile 1**Reinforced Concrete Pier Wall**

Element Number	Element Name	Total Qty	CS1 Qty	CS2 Qty	CS3 Qty	CS4 Qty	
210	Reinforced Concrete Pier Wall	36	0	36	0	0	Feet

Element Number	Defect Type	Defect Description	CS	CS Qty	Maint Qty	
210	Abrasion/Wear (PSC/RC)	UP TO 38" HIGH SCALING WITH EXPOSED AGGREGATE THROUGHOUT PIER WALL, CONDITION IN SPAN 3 FACE SHOWN IN PHOTO	2	36		Feet

General Comments

Elements Verified

Location	Name	Component	Element Name	Amount
Span 1	Deck	Reinforced Concrete Deck	Reinforced Concrete Deck	1182
Span 1	Beam 1	Reinforced Concrete Girder	Reinforced Concrete Open Girder/Beam	38
Span 1	Beam 2	Reinforced Concrete Girder	Reinforced Concrete Open Girder/Beam	38
Span 1	Beam 3	Reinforced Concrete Girder	Reinforced Concrete Open Girder/Beam	38
Span 1	Beam 4	Reinforced Concrete Girder	Reinforced Concrete Open Girder/Beam	38
Span 1	Left Bridge Rail	Concrete Railing	Reinforced Concrete Bridge Railing	38
Span 1	Right Bridge Rail	Concrete Railing	Reinforced Concrete Bridge Railing	38
Span 2	Deck	Reinforced Concrete Deck	Reinforced Concrete Deck	1182
Span 2	Beam 1	Reinforced Concrete Girder	Reinforced Concrete Open Girder/Beam	38
Span 2	Beam 2	Reinforced Concrete Girder	Reinforced Concrete Open Girder/Beam	38
Span 2	Beam 3	Reinforced Concrete Girder	Reinforced Concrete Open Girder/Beam	38
Span 2	Beam 4	Reinforced Concrete Girder	Reinforced Concrete Open Girder/Beam	38
Span 2	Left Bridge Rail	Concrete Railing	Reinforced Concrete Bridge Railing	38
Span 2	Right Bridge Rail	Concrete Railing	Reinforced Concrete Bridge Railing	38
Span 2	Expansion Joint 1	Standard Joint	Pourable Joint Seal	32
Span 3	Deck	Reinforced Concrete Deck	Reinforced Concrete Deck	1182
Span 3	Beam 1	Reinforced Concrete Girder	Reinforced Concrete Open Girder/Beam	38
Span 3	Beam 2	Reinforced Concrete Girder	Reinforced Concrete Open Girder/Beam	38
Span 3	Beam 3	Reinforced Concrete Girder	Reinforced Concrete Open Girder/Beam	38
Span 3	Beam 4	Reinforced Concrete Girder	Reinforced Concrete Open Girder/Beam	38
Span 3	Left Bridge Rail	Concrete Railing	Reinforced Concrete Bridge Railing	38
Span 3	Right Bridge Rail	Concrete Railing	Reinforced Concrete Bridge Railing	38
Span 3	Expansion Joint 2	Standard Joint	Pourable Joint Seal	32
Span 4	Deck	Reinforced Concrete Deck	Reinforced Concrete Deck	1182
Span 4	Beam 1	Reinforced Concrete Girder	Reinforced Concrete Open Girder/Beam	38
Span 4	Beam 2	Reinforced Concrete Girder	Reinforced Concrete Open Girder/Beam	38
Span 4	Beam 3	Reinforced Concrete Girder	Reinforced Concrete Open Girder/Beam	38
Span 4	Beam 4	Reinforced Concrete Girder	Reinforced Concrete Open Girder/Beam	38
Span 4	Left Bridge Rail	Concrete Railing	Reinforced Concrete Bridge Railing	38
Span 4	Right Bridge Rail	Concrete Railing	Reinforced Concrete Bridge Railing	38
Span 4	Expansion Joint 3	Standard Joint	Pourable Joint Seal	32
Span 4	Expansion Joint 4	Standard Joint	Pourable Joint Seal	32
Bent 1	Cap 1	Reinforced Concrete Pier Cap	Reinforced Concrete Pier Cap	36
Bent 1	Pile 1	Reinforced Concrete Pier Wall	Reinforced Concrete Pier Wall	36
End Bent 1	Cap 1	Reinforced Concrete Pier Cap	Reinforced Concrete Pier Cap	30
End Bent 1	Abutment	Reinforced Concrete Abutment	Reinforced Concrete Abutment	54
Bent 2	Cap 1	Reinforced Concrete Pier Cap	Reinforced Concrete Pier Cap	36
Bent 2	Pile 1	Reinforced Concrete Pier Wall	Reinforced Concrete Pier Wall	36
End Bent 2	Cap 1	Reinforced Concrete Pier Cap	Reinforced Concrete Pier Cap	30
End Bent 2	Abutment	Reinforced Concrete Abutment	Reinforced Concrete Abutment	54
Bent 3	Cap 1	Reinforced Concrete Pier Cap	Reinforced Concrete Pier Cap	36
Bent 3	Pile 1	Reinforced Concrete Pier Wall	Reinforced Concrete Pier Wall	36

General Inspection Notes

Span 4

Expansion Joint 3

BROKEN AND HANGING BACKER ROD ALONG PIER 3 JOINT IN VARIOUS LOCATIONS THROUGHOUT BAYS,
CONDITION IN BAY 2 SHOWN IN PHOTO

National Bridge and NC Inspection Items

Structure Number: 230005

Inspection Date: 06/03/2020

National Bridge Inventory Items

Item	Grade Scale	Grade
Item 58: Deck	0 - 9 , N	6
Item 59: Superstructure	0 - 9 , N	6
Item 60: Substructure	0 - 9 , N	5 4
Item 61: Channel and Channel Protection	0 - 9 , N	4
Item 62: Culvert	0 - 9 , N	N
Item 71: Waterway Adequacy	0 - 9 , N	7
Item 72: Approach Roadway Alignment	0 - 9 , N	8

Controlled by U/W inspection per DNS

Note: If NBI Inspection Item is not present, code NBI item with "N"

NC SMU Inspection Items

Item	Grade Scale	Grade	Maint. Qty.	Maint. Code
Deck Debris	G, F, P, or C	F	4200	3376
Drainage System	G, F, P, or C	G	0	3332
Utilities	G, F, P, or C			
Slope Protection	G, F, P, or C		0	3352
Scour	G, F, P, or C	P		
Wingwall	G, F, P, or C	F	250	3350
Field Scour Evaluation		P		
Drift	G, F, P, or C	G	0	3366
Fender System	G, F, P, or C		0	3364
Movable Span Machinery	G, F, P, or C			
Response to Live Load	G, F, P, or C	G		
Superstructure Paint Code				

Note: If NC SMU Inspection Item is not present, leave NC SMU item blank

Inspection Information

Item	Grade Scale	Grade
Sign Noticed Issued	YES/NO	Y
Priority Maintenance Request Submitted	YES/NO	Y
Inspection Time	Hours	12
Traffic Control Time	Hours	
Snooper Time	Hours	
Ladder Used	YES/NO	Y
Bucket Truck Used	YES/NO	N
Boat Used	YES/NO	Y
Other Equipment Used	YES/NO	N

National Bridge and NC SMU Inspection Item Details

Structure Number: 230005

Inspection Date: 06/03/2020

Item	Channel and Channel Protection - Item 61	Grade	4	Maint Code	Qty. 0
Details	GRADE TAKEN FROM UNDERWATER REPORT DATED 3.09.2020				
Item	Sign Notice Issued	Grade	Y	Maint Code	Qty. 0
Details	MISSING DELINEATOR AT NORTHWEST CORNER MISSING DELINEATOR AT NORTHEAST CORNER				
Item	Priority Maintenance Issued	Grade	Y	Maint Code	Qty. 0
Details	SPAN 4 DECK SPAN 1 GIRDER 1 SPAN 1 GIRDER 3 SPAN 3 GIRDER 2 SOUTHEAST WINGWALL DELINEATOR AT NORTHWEST CORNER DELNEATOR AT NORTHEAST CORNER				
Item	Deck Debris	Grade	F	Maint Code 3376	Qty. 4200
Details	DIRT AND DEBRIS ACCUMULATION IN BOTH SHOULDERS, ACCUMULATION IN LEFT SHOULDER SHOWN IN PHOTO				
Item	Scour	Grade	P	Maint Code	Qty. 0
Details	SCOUR AND EXPOSED TIMBER FOUNDATION PILES AT PIER 2 NOTED IN UNDERWATER INSPECTION REPORT DATED 3.09.2020				
Item	Wingwalls	Grade	F	Maint Code 3350	Qty. 250
Details	PAR: 50' SECTION WITH AREAS OF DECAY UP TO FULL DEPTH WITH EXPOSED FILL THROUGHOUT FACE OF SOUTHEAST WINGWALL, BEGINNING APPROXIMATELY 18' FROM NEAR END OF WINGWALL (SEE PHOTOS) (2) AREAS OF SHOULDER EROSION UP TO 55" X 26" X 21" DEEP BEHIND SOUTHEAST WINGWALL, APPROXIMATELY 20' AND 24' FROM ABUTMENT 2 FILL FACE (SEE PHOTO) PRIORITY MAINTENANCE REPAIR TO SOUTHWEST WINGWALL SINCE 2018 INSPECTOIN (SEE PHOTO) PRIORITY MAINTENANCE REPAIR TO SOUTHWEST WINGWALL BRACE PILE 1 WITH ADDITION OF PILE TO RIGHT OF ORIGINAL PILE SINCE 2018 INSPECTOIN (SEE PHOTO) PRIORITY MAINTENANCE REPAIR TO SOUTHEAST WINGWALL SINCE 2018 INSPECTOIN (SEE PHOTO) PRIORITY MAINTENANCE REPAIR TO SOUTHEAST WINGWALL BRACE PILE 4 SINCE 2018 INSPECTOIN, APPROXIMATELY 13' FROM NEAR END OF SOUTHEAST WINGWALL (SEE PHOTO)				
Item	Field Scour Evaluation	Grade	P	Maint Code	Qty. 0
Details	SCOUR BENEATH PIER 2 FOOTING EXPOSING TIMBER FOUNDATION PILES NOTED IN UNDERWATER REPORT DATED 3.9.2020; PRIORITY MAINTENANCE SUBMITTED FOR SCOUR AT PIER 2 AND AREAS OF DECAY IN EXPOSED TIMBER FOUNDATION PILES				
Item	General Comments and Misc Items	Grade		Maint Code	Qty. 0
Details	PAR: MISSING DELINEATOR AT NORTHWEST CORNER PAR: MISSING DELINEATOR AT NORTHEAST CORNER (2) AREAS OF DISTORTION UP TO 33" LONG X 2" ALONG TOP OF NORTHEAST APPROACH GUARDRAIL, APPROXIMATELY 23' AND 32' FROM ABUTMENT 2 FILL FACE, CONDITION APPROXIMATELY 32' FROM ABUTMENT 2 FILL FACE SHOWN IN PHOTO; PREVIOUSLY NOTED IN SPAN 4 RIGHT RAIL				



Span 1 Left Bridge Rail: UP TO 0.025" TRANSVERSE AND VERTICAL CRACKS IN TOP AND FACE OF CURB NEAR ABUTMENT 1 FILL FACE



Span 2 Right Bridge Rail: (3) AREAS OF EXPOSED REBAR UP TO 7" X 1" IN FACE OF RAIL APPROXIMATELY 7', 12', AND 13' FROM PIER 1 JOINT, CONDITION 12' FROM PIER 1 JOINT SHOWN



Span 3 Right Bridge Rail: UP TO 1/16" DIAGONAL CRACK IN TOP AND FACE OF CURB, APPROXIMATELY 4' FROM PIER 3 JOINT



(2) AREAS OF DISTORTION UP TO 33" LONG X 2" ALONG TOP OF NORTHEAST APPROACH GUARDRAIL, APPROXIMATELY 23' AND 32' FROM ABUTMENT 2 FILL FACE, CONDITION APPROXIMATELY 32' FROM ABUTMENT 2 FILL FACE SHOWN; PREVIOUSLY NOTED IN SPAN 4 RIGHT RAIL



DIRT AND DEBRIS ACCUMULATION IN BOTH SHOULDERS, ACCUMULATION IN LEFT SHOULDER SHOWN



Span 1 Deck: 106" X 77" PATCH IN TOP OF DECK IN CENTERLINE OF ROADWAY NEAR ABUTMENT 1 FILL FACE



Span 1 Deck: UP TO 1/16" DIAGONAL CRACKS IN TOP OF DECK IN WESTBOUND LANE NEAR ABUTMENT 1 FILL FACE



Span 3 Expansion Joint 2: 9" SECTION OF MISSING JOINT MATERIAL ALONG PIER 2 JOINT AT CENTERLINE OF ROADWAY



Span 2 Deck: UP TO 1/2" VERTICAL MISALIGNMENT BETWEEN SPAN 2 AND 3 DECKS ALONG PIER 2 JOINT, CONDITION AT LEFT CURB SHOWN



Span 3 Deck: UP TO 1/16" MAP CRACKS IN TOP OF DECK PRIMARILY IN TRAVEL LANES



Span 4 Deck: PAR: 8" X 3" X 1/2" DEEP SPALL WITH EXPOSED REBAR IN TOP OF DECK IN WHEEL LINE OF EASTBOUND LANE, APPROXIMATELY 16" FROM ABUTMENT 2 FILL FACE



(2) AREAS OF SHOULDER EROSION UP TO 55" X 26" X 21" DEEP BEHIND SOUTHEAST WINGWALL, APPROXIMATELY 20' AND 24' FROM ABUTMENT 2 FILL FACE



PRIORITY MAINTENANCE REPAIR TO SOUTHWEST WINGWALL SINCE 2018 INSPECTOIN



End Bent 1 Cap 1: UP TO 0.012" VERTICAL CRACKS IN FACE OF CAP IN VARIOUS LOCATIONS THROUGHOUT, CRACK IN BAY 2 TO LEFT OF GIRDER 3 SHOWN



End Bent 1 Abutment: UP TO 0.016" VERTICAL CRACKS IN FACE OF ABUTMENT IN VARIOUS LOCATIONS, CRACK BENEATH BAY 2 SHOWN



Span 1 Deck: VEGETATION GROWTH ALONG ABUTMENT 1 AT LEFT END, EXTENDING TO BOTTOM OF DECK



Span 1 Deck: 52" X 43" PATCH IN BOTTOM OF DECK IN BAY 2 NEAR ABUTMENT 1



Span 1 Deck: 13" X 4" X 1" DEEP SPALL WITH EXPOSED REBAR AND 16" X 7" AREA OF DELAMINATION WITH UP TO 0.02" MAP CRACKS IN BOTTOM OF DECK IN BAY 1, APPROXIMATELY 7' FROM ABUTMENT 1



Span 1 Beam 1: 6' SECTION OF UP TO 0.012" DIAGONAL CRACKS IN LEFT FACE OF GIRDER EXTENDING FROM ABUTMENT 1, CRACK APPROXIMATELY 18" FROM ABUTMENT 1 SHOWN



Span 1 Beam 1: PAR: 21" X 10" X 4" DEEP SPALL WITH EXPOSED REBAR IN LEFT FACE OF GIRDER AT PIER 1



Span 2 Beam 1: (2) REPAIRS UP TO 14" X 6" IN LEFT FACE OF GIRDER, APPROXIMATELY 1' AND 3' FROM PIER
1



Span 1 Beam 1: 10" X 5" AREA OF DELAMINATION WITH UP TO 1/4" DIAGONAL CRACK IN RIGHT FACE OF GIRDER AT PIER 1



Span 2 Beam 2: 16" X 4" X 4" AREA OF DELAMINATION WITH UP TO 0.025" LONGITUDINAL AND HORIZONTAL CRACKS IN BOTTOM AND RIGHT FACE OF GIRDER AT PIER 1



Span 1 Beam 2: 12" X 5" FAILED REPAIR WITH UP TO 1/8" DIAGONAL CRACKS IN RIGHT FACE OF GIRDER AT PIER 1



Span 1 Beam 3: 12" X 4" X 5" AREA OF DELAMINATION WITH UP TO 0.02" LONGITUDINAL AND HORIZONTAL CRACKS IN BOTTOM AND LEFT FACE OF GIRDER AT PIER 1



Span 1 Beam 3: PAR: 11" X 6" X 3" DEEP SPALL WITH EXPOSED REBAR IN RIGHT FACE OF GIRDER AT PIER 1



Span 2 Beam 4: UP TO 0.025" DIAGONAL CRACKS WITH RUST STAINING AND 2" X 1" AREA OF EXPOSED REBAR IN RIGHT FACE OF GIRDER AT PIER 1



Bent 1 Cap 1: 21" X 12" FAILED REPAIR WITH UP TO 0.012" MAP CRACKS AND (2) SPALLS UP TO 12" X 4" X 1/2" DEEP IN SPAN 1 FACE OF CAP BENEATH GIRDER 3



Bent 1 Pile 1: 12" X 6" X 1" DEEP SPALL WITH EXPOSED REBAR IN SPAN 1 FACE OF PIER WALL, APPROXIMATELY 1' FROM BOTTOM OF CAP



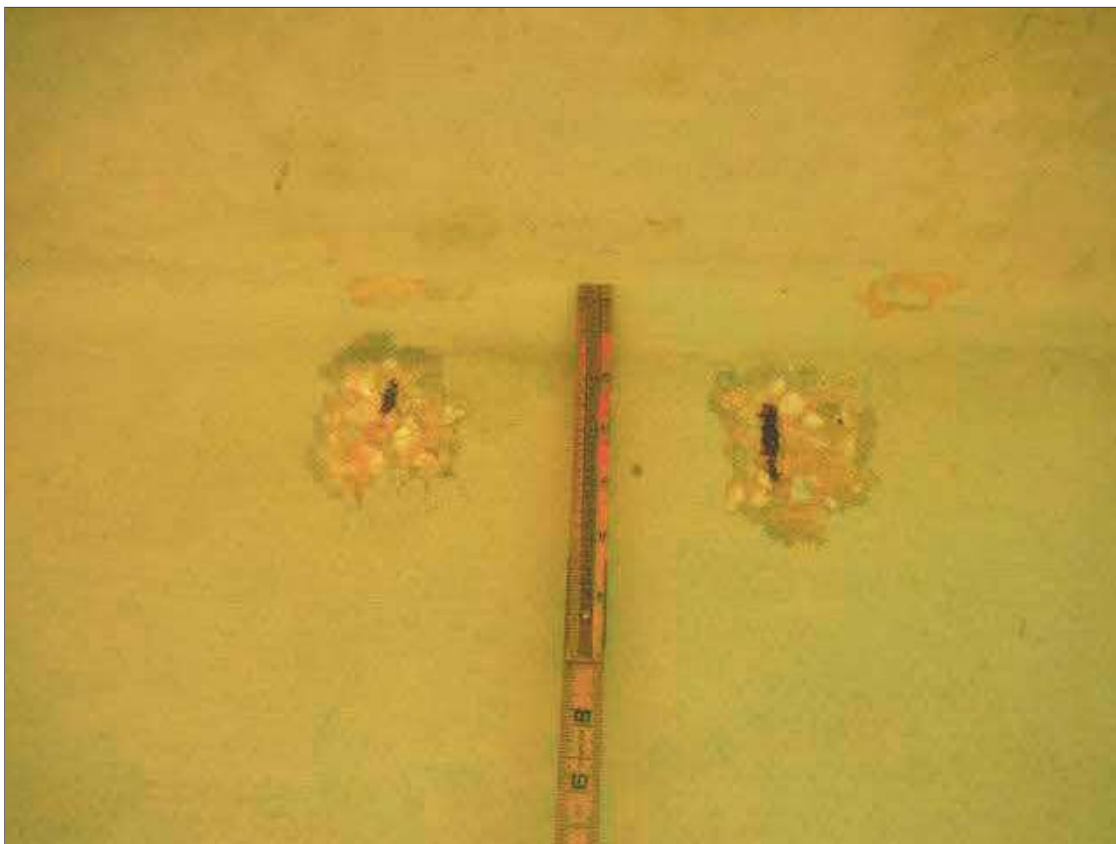
Span 2 Beam 3: UP TO 1/16" HORIZONTAL CRACKS IN FACE OF PIER 1 DIAPHRAGM IN BAY 3, ADJACENT TO GIRDER 4



Bent 2 Pile 1: 33" X 16" REPAIR IN SPAN 3 FACE OF PIER WALL AT TOP OF FOOTING BENEATH GIRDER 4



Bent 2 Cap 1: APPROXIMATELY 7' X 12" REPAIR IN SPAN 2 FACE OF CAP BENEATH BAY 1



Span 4 Beam 1: (2) SPALLS WITH EXPOSED REBAR UP TO 3" DIAMETER X 1/2" DEEP IN LEFT FACE OF GIRDER, APPROXIMATELY 3' FROM PIER 3



Bent 3 Pile 1: UP TO 38" HIGH SCALING WITH EXPOSED AGGREGATE THROUGHOUT PIER WALL, CONDITION IN SPAN 3 FACE SHOWN



Span 3 Deck: 10" X 8" X 1" DEEP SPALL WITH EXPOSED REBAR IN BOTTOM OF RIGHT OVERHANG NEAR PIER
3



Span 4 Beam 1: 8" X 5" X 1" DEEP SPALL WITH EXPOSED REBAR IN BOTTOM OF PIER 3 DIAPHRAGM IN BAY 1



Span 3 Beam 2: PAR: 9" X 2" X 2" DEEP SPALL WITH EXPOSED REBAR IN LEFT FACE OF GIRDER AT PIER 3



Span 4 Expansion Joint 3: BROKEN AND HANGING BACKER ROD ALONG PIER 3 JOINT IN VARIOUS LOCATIONS THROUGHOUT BAYS, CONDITION IN BAY 2 SHOWN



Span 3 Beam 2: 13" X 8" FAILED REPAIR WITH UP TO 1/4" DIAGONAL CRACK IN RIGHT FACE OF GIRDER AT PIER 3



Span 4 Beam 1: UP TO 0.012" TRANSVERSE AND VERTICAL CRACKS IN BOTTOM AND BOTH FACES OF GIRDER IN VARIOUS LOCATIONS THROUGHOUT, CONDITION ON RIGHT SIDE NEAR MIDSPAN SHOWN



End Bent 2 Abutment: UP TO 0.025" VERTICAL CRACKS IN FACE OF CURTAIN WALL AT RIGHT END



PRIORITY MAINTENANCE REPAIR TO SOUTHEAST WINGWALL SINCE 2018 INSPECTOIN



PAR: 50' SECTION WITH AREAS OF DECAY UP TO FULL DEPTH WITH EXPOSED FILL THROUGHOUT FACE OF SOUTHEAST WINGWALL, BEGINNING APPROXIMATELY 18' FROM NEAR END OF WINGWALL, CONDITION APPROXIMATELY 20' FROM NEAR END OF WINGWALL SHOWN



PAR: 50' SECTION WITH AREAS OF DECAY UP TO FULL DEPTH WITH EXPOSED FILL THROUGHOUT FACE OF SOUTHEAST WINGWALL, BEGINNING APPROXIMATELY 18' FROM NEAR END OF WINGWALL, CONDITION APPROXIMATELY 40' FROM NEAR END OF WINGWALL SHOWN



PAR: 50' SECTION WITH AREAS OF DECAY UP TO FULL DEPTH WITH EXPOSED FILL THROUGHOUT FACE OF SOUTHEAST WINGWALL, BEGINNING APPROXIMATELY 18' FROM NEAR END OF WINGWALL, CONDITION APPROXIMATELY 60' FROM NEAR END OF WINGWALL SHOWN



PRIORITY MAINTENANCE REPAIR TO SOUTHEAST WINGWALL BRACE PILE 4 SINCE 2018 INSPECTOIN, APPROXIMATELY 13' FROM NEAR END OF SOUTHEAST WINGWALL



PRIORITY MAINTENANCE REPAIR TO SOUTHWEST WINGWALL BRACE PILE 1 WITH ADDITION OF PILE TO RIGHT OF ORIGINAL PILE SINCE 2018 INSPECTOIN

Stream Bed Soundings

(Profile diagram on following sheet)

County **COLUMBUS**

Structure Number: **230005**

Inspection Date **06/03/2020**

Sounding recorded from: **Top of Bridge Rail**

Highwater Mark Distance **5**

Location of Highwater Mark **DRIFT ON CAP**

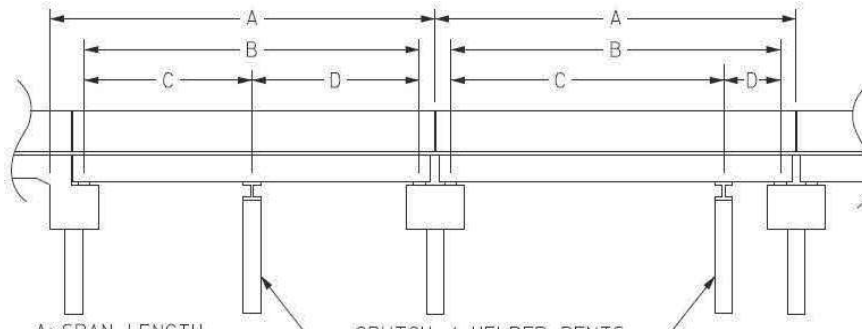
Distance (Station) ft.	Downstream Sounding ft.	Upstream Sounding ft.	Description
0.000	2.300	0.000	TOP OF WINGWALL
0.100	5.300	10.500	GROUND AT WINGWALL
5.000	8.800	0.000	GROUND
15.000	11.200	0.000	GROUND
30.000	11.800	0.000	GROUND
37.500	14.100	12.200	PIER 1
40.000	15.300	0.000	WSWE
50.000	18.400	0.000	STREAMBED
60.000	19.200	0.000	STREAMBED
70.000	19.500	0.000	STREAMBED
75.000	18.500	19.000	PIER 2
85.000	19.800	0.000	STREAMBED
95.000	19.800	0.000	STREAMBED
105.000	15.500	0.000	WSWE
112.500	10.400	12.000	PIER 3
125.000	11.500	0.000	GROUND
135.000	12.300	0.000	GROUND
145.000	11.300	0.000	GROUND
149.900	8.900	11.300	GROUND AT WINGWALL
150.000	2.400	0.000	TOP OF WINGWALL

Structure Data Worksheet

Span Profile

County: **COLUMBUS**

Structure Number: **230005**



A: SPAN LENGTH
 B: BEARING TO BEARING
 C: DISTANCE FROM NEAR BEARING
 D: DISTANCE TO FAR BEARING

Span Number	Span Length	Bearing to Bearing	Crutch/ Helper Bent	Distance to Near Bearing	Distance to Far Bearing
1	37.500	34.083			
2	37.500	36.667			
3	37.500	36.667			
4	37.500	34.083			



GUARDRAIL END TREATMENT AT SOUTHEAST CORNER, OTHERS SIMILAR



SOUTHEAST APPROACH GUARDRAIL POST SPACING AT MID LENGTH, OTHERS SIMILAR



EAST APPROACH, LOOKING WEST



NORTHEAST APPROACH GUARDRAIL POST SPACING AT BRIDGE, OTHERS SIMILAR



TRANSITION ALONG ABUTMENT 2 FILL FACE, TRANSITION ALONG ABUTMENT 1 FILL FACE SIMILAR



EAST APPROACH



WEST APPROACH



LOOKING DOWNSTREAM, NORTH



LOOKING UPSTREAM, SOUTH



PIER 1 JOINT, OTHERS SIMILAR



RIGHT RAIL, LEFT RAIL SIMILAR



GUARDRAIL TO BRIDGE RAIL CONNECTION AT SOUTHWEST CORNER, OTHERS SIMILAR



LOOKING EAST



ABUTMENT 1, ABUTMENT 2 SIMILAR



SPAN 1 DOWNSTREAM PROFILE, LOOKING SOUTH



DOWNSTREAM PROFILE, LOOKING SOUTHEAST



PIER 2, OTHERS SIMILAR



SPAN 2 UNDERDECK, OTHERS SIMILAR



LOOKING UPSTREAM, SOUTHEAST



LOOKING DOWNSTREAM, NORTHWEST



SPAN 2 DOWNSTREAM PROFILE, LOOKING SOUTH



SPAN 3 DOWNSTREAM PROFILE, LOOKING SOUTHEAST



SPAN 4 UPSTREAM PROFILE, LOOKING NORTHWEST



UPSTREAM PROFILE, LOOKING NORTHWEST








BRIDGE INSPECTOR'S RECOMMENDATION FOR MAINTENANCE REPAIRS

Bridge: 230005

County COLUMBUS

Date:

These Repairs Should Be Made Within Twelve Months From Date Of This Inspection

MMS Code	Description of Function	Unit	Quantity	Remarks	Est. Cost
 0	No Maintenance Required	NA	1	MISSING DELINEATOR AT NORTHWEST CORNER.	
 0	No Maintenance Required	NA	1	MISSING DELINEATOR AT NORTHEAST CORNER.	
 3306	Maintain Concrete Superstructure Components	SF	1	Span 1 Beam 1: 21" X 10" X 4" DEEP SPALL WITH EXPOSED REBAR IN LEFT FACE OF GIRDER AT PIER 1.	
 3306	Maintain Concrete Superstructure Components	SF	1	Span 1 Beam 3: 11" X 6" X 3" DEEP SPALL WITH EXPOSED REBAR IN RIGHT FACE OF GIRDER AT PIER 1.	
 3306	Maintain Concrete Superstructure Components	SF	1	Span 3 Beam 2: 9" X 2" X 2" DEEP SPALL WITH EXPOSED REBAR IN LEFT FACE OF GIRDER AT PIER 3.	
 3326	Maintain Concrete Deck	SF	1	Span 4 Deck: 8" X 3" X 1/2" DEEP SPALL WITH EXPOSED REBAR IN TOP OF DECK IN WHEEL LINE OF EASTBOUND LANE, APPROXIMATELY 16" FROM END BENT 2 FILL FACE.	
 3350	Maint R C Wings and Walls	SF	250	50' SECTION WITH AREAS OF DECAY UP TO FULL DEPTH WITH EXPOSED FILL THROUGHOUT FACE OF SOUTHEAST WINGWALL, BEGINNING APPROXIMATELY 18' FROM NEAR END OF WINGWALL.	

Key

 Priority Maintenance Item

 Critical Finding Item

 Priority Maintenance Level Not Determined

BRIDGE INSPECTOR'S RECOMMENDATION FOR PRIORITY MAINTENANCE REPAIRS

Bridge: 230005

County COLUMBUS

THE FOLLOWING MAINTENANCE ITEMS HAVE BEEN SUBMITTED IN CONJUNCTION WITH A PRIORITY MAINTENANCE REQUEST

MMS Code	MMS Description	Quantity
0	No Maintenance Required	1 NA
Location:		
Bent/Span No.		
Priority Level	Status	
Priority Maintenance	Division Maintenance Work In Process	
Submitted Date:	Submitted By:	Assisted By:
06/04/2020	D. Curtis	
Details		
MISSING DELINEATOR AT NORTHWEST CORNER.		

MMS Code	MMS Description	Quantity
0	No Maintenance Required	1 NA
Location:		
Bent/Span No.		
Priority Level	Status	
Priority Maintenance	Division Maintenance Work In Process	
Submitted Date:	Submitted By:	Assisted By:
06/04/2020	D. Curtis	
Details		
MISSING DELINEATOR AT NORTHEAST CORNER.		

BRIDGE INSPECTOR'S RECOMMENDATION FOR PRIORITY MAINTENANCE REPAIRS

Bridge: 230005

County COLUMBUS

THE FOLLOWING MAINTENANCE ITEMS HAVE BEEN SUBMITTED IN CONJUNCTION WITH A PRIORITY MAINTENANCE REQUEST

MMS Code	MMS Description	Quantity
3306	Maintain Concrete Superstructure Components	1 SF
Location:		
Bent/Span No.		
Priority Level	Status	
Priority Maintenance	Division Maintenance Work In Process	
Submitted Date:	Submitted By:	Assisted By:
06/04/2020	D. Curtis	
Details		
Span 1 Beam 1: 21" X 10" X 4" DEEP SPALL WITH EXPOSED REBAR IN LEFT FACE OF GIRDER AT PIER 1.		

MMS Code	MMS Description	Quantity
3306	Maintain Concrete Superstructure Components	1 SF
Location:		
Bent/Span No.		
Priority Level	Status	
Priority Maintenance	Division Maintenance Work In Process	
Submitted Date:	Submitted By:	Assisted By:
06/04/2020	D. Curtis	
Details		
Span 1 Beam 3: 11" X 6" X 3" DEEP SPALL WITH EXPOSED REBAR IN RIGHT FACE OF GIRDER AT PIER 1.		

BRIDGE INSPECTOR'S RECOMMENDATION FOR PRIORITY MAINTENANCE REPAIRS

Bridge: 230005

County COLUMBUS

THE FOLLOWING MAINTENANCE ITEMS HAVE BEEN SUBMITTED IN CONJUNCTION WITH A PRIORITY MAINTENANCE REQUEST

MMS Code	MMS Description	Quantity
3306	Maintain Concrete Superstructure Components	1 SF
Location:		
Bent/Span No.		
Priority Level	Status	
Priority Maintenance	Division Maintenance Work In Process	
Submitted Date:	Submitted By:	Assisted By:
06/04/2020	D. Curtis	
Details		
Span 3 Beam 2: 9" X 2" X 2" DEEP SPALL WITH EXPOSED REBAR IN LEFT FACE OF GIRDER AT PIER 3.		

MMS Code	MMS Description	Quantity
3326	Maintain Concrete Deck	1 SF
Location:		
Bent/Span No.		
Priority Level	Status	
Priority Maintenance	Division Maintenance Work In Process	
Submitted Date:	Submitted By:	Assisted By:
06/04/2020	D. Curtis	
Details		
Span 4 Deck: 8" X 3" X 1/2" DEEP SPALL WITH EXPOSED REBAR IN TOP OF DECK IN WHEEL LINE OF EASTBOUND LANE, APPROXIMATELY 16" FROM END BENT 2 FILL FACE.		

BRIDGE INSPECTOR'S RECOMMENDATION FOR PRIORITY MAINTENANCE REPAIRS

Bridge: 230005 County COLUMBUS

THE FOLLOWING MAINTENANCE ITEMS HAVE BEEN SUBMITTED IN CONJUNCTION WITH A PRIORITY MAINTENANCE REQUEST

MMS Code	MMS Description	Quantity
3350	Maint R C Wings and Walls	250 SF
Location:		
Bent/Span No.		
Priority Level	Status	
Priority Maintenance	Division Maintenance Work In Process	
Submitted Date:	Submitted By:	Assisted By:
06/04/2020	D. Curtis	
Details		
50' SECTION WITH AREAS OF DECAY UP TO FULL DEPTH WITH EXPOSED FILL THROUGHOUT FACE OF SOUTHEAST WINGWALL, BEGINNING APPROXIMATELY 18' FROM NEAR END OF WINGWALL.		

Bridge Inspection Field Sketch



Roadway	20.75ft Wide	2 Paved Lanes	Looking East
Left Shoulder	2.75ft Wide	2.00ft Paved	0.75ft Unpaved
Right Shoulder	4.92ft Wide	1.67ft Paved	3.25ft Unpaved
Left Guardrail	2.75ft from road		
Right Guardrail	4.92ft from road		

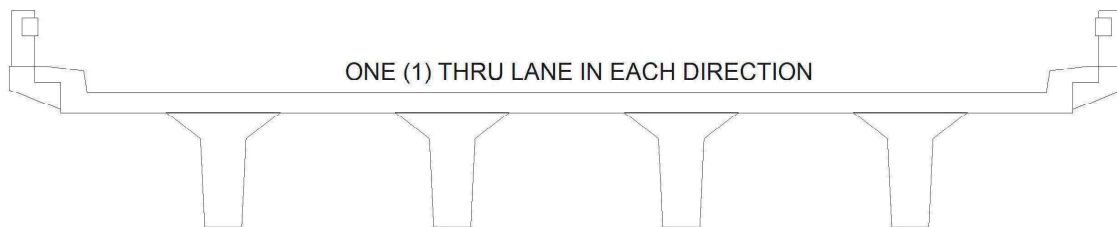
Measurements recorded approximately 20ft from End Bent 1 fill face along centerline of roadway.

SKETCH REVISED BY RKW ON 6.3.20

Title APPROACH ROADWAY		Description LOOKING EAST	
Bridge No: 230005	Drawn By: RLK	Date: 07/21/2010	File Name: S0326000031

Bridge Inspection Field Sketch

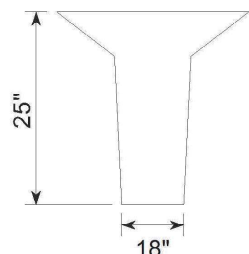
Deck Width/Out to Out	33.50ft*	Between Rails	31.333ft
Clear Roadway	28.00ft	Wearing Surface	
Median Width		Median Height	
Curb Height		Left 0.792ft	Right 0.792ft
Curb Width		Left 1.75ft	Right 1.75ft
Clear Roadway (Rail to Median)		Left	Right
Guardrail Width		Left 0.667ft	Right 0.667ft
Top of Rail to Deck/Wearing Surface		Left 2.50ft	Right 2.50ft
Bridge Rail		Left Type 11	Right Type 11



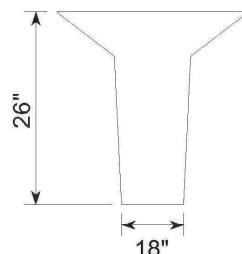
Measurements for Spans	1 thru 4		
Deck Thickness	0.562	Left Overhang	4.75*
Top of Rail to Bottom of Beam	5.229	Right Overhang	4.75*

Beam Number	Beam Type	Spacing	Comments
1	RC Deck Girder	8.00ft	
2	RC Deck Girder	8.00ft	
3	RC Deck Girder	8.00ft	
4	RC Deck Girder		

*Measurements including brackets, measurements without brackets: Out to Out = 31.50ft and Overhangs 3.75ft



GIRDER DETAILS
Girders 1 and 4



GIRDER DETAILS
Girders 2 and 3

SKETCH REVISED BY RKW ON 6.3.20 (CHANGES IN RED)

Title

TYPICAL SECTION

Description

4 LINES OF RC DECK GIRDERS

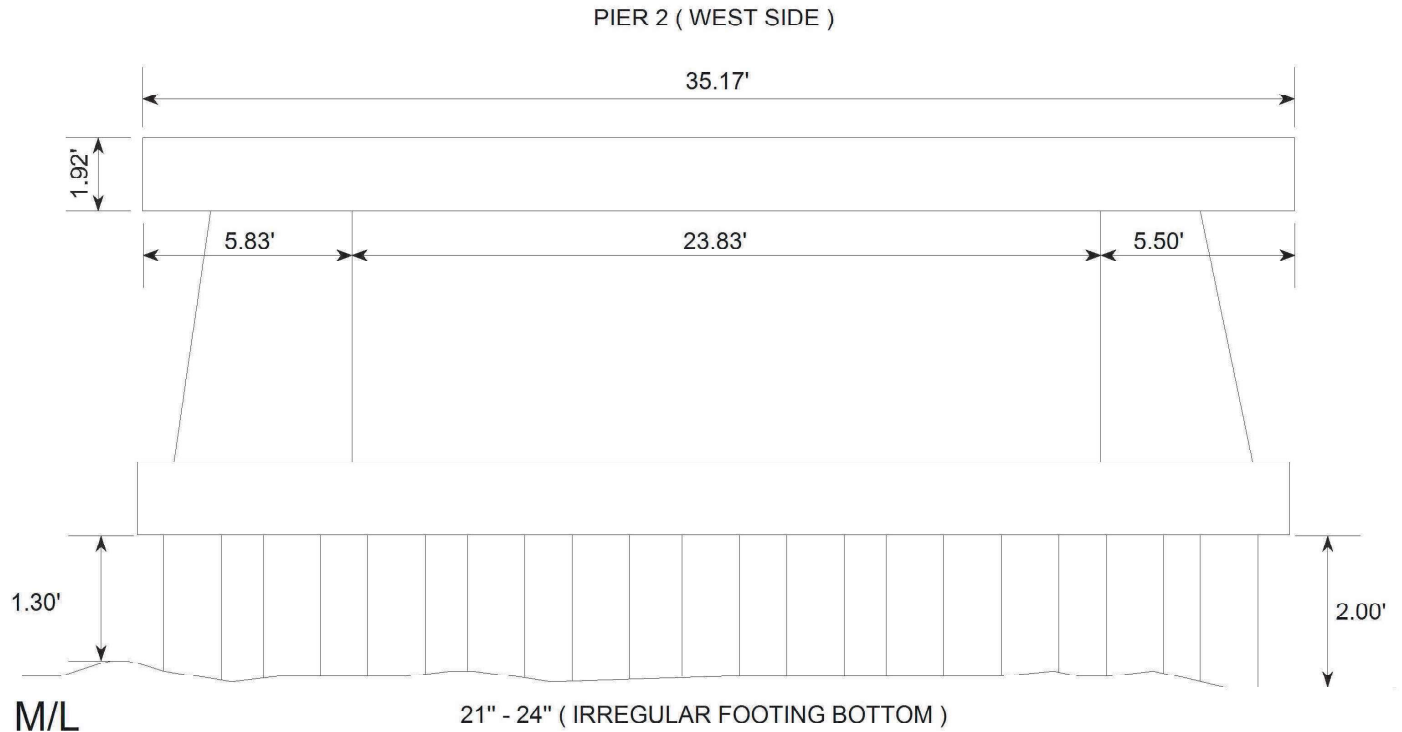
Bridge No: 230005

Drawn By: SLK

Date: 06/07/2006

File Name: S0326000032

Bridge Inspection Field Sketch



NOTE: TIMBER PILE SPACINGS NOT VISIBLE DUE TO WATERLEVEL

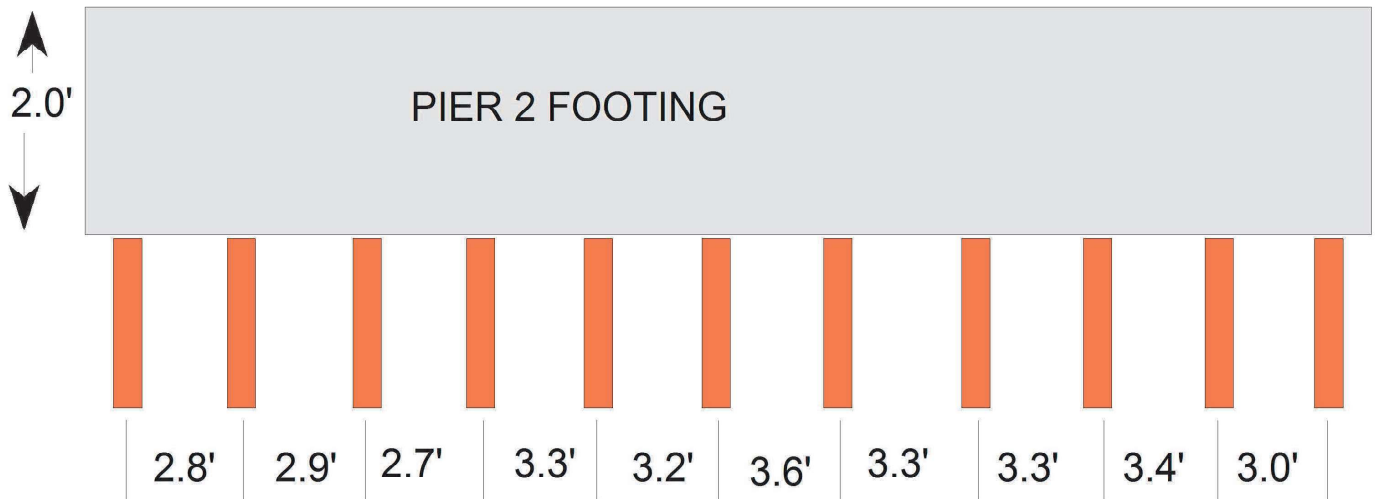
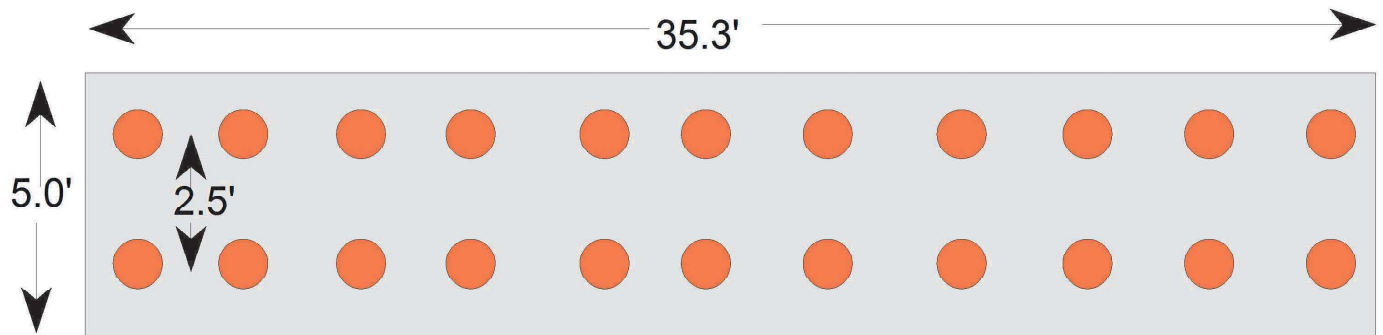
Cap Width: 1.917ft
 Beam to end of Cap: Left: 3.75ft
 Right: 3.75ft

SKETCH VERIFIED BY RKW ON 6.3.20

Title PIER PROFILE		Description PIERS 1 THRU 3	
Bridge No: 230005	Drawn By: PGR	Date: 4/28/2008	File Name: S0174012406

Bridge Inspection Field Sketch

PIER 2 FOUNDATION PILE LAYOUT



NOT TO SCALE

Title
FOOTING PILE LAYOUT

Description
TOP VIEW

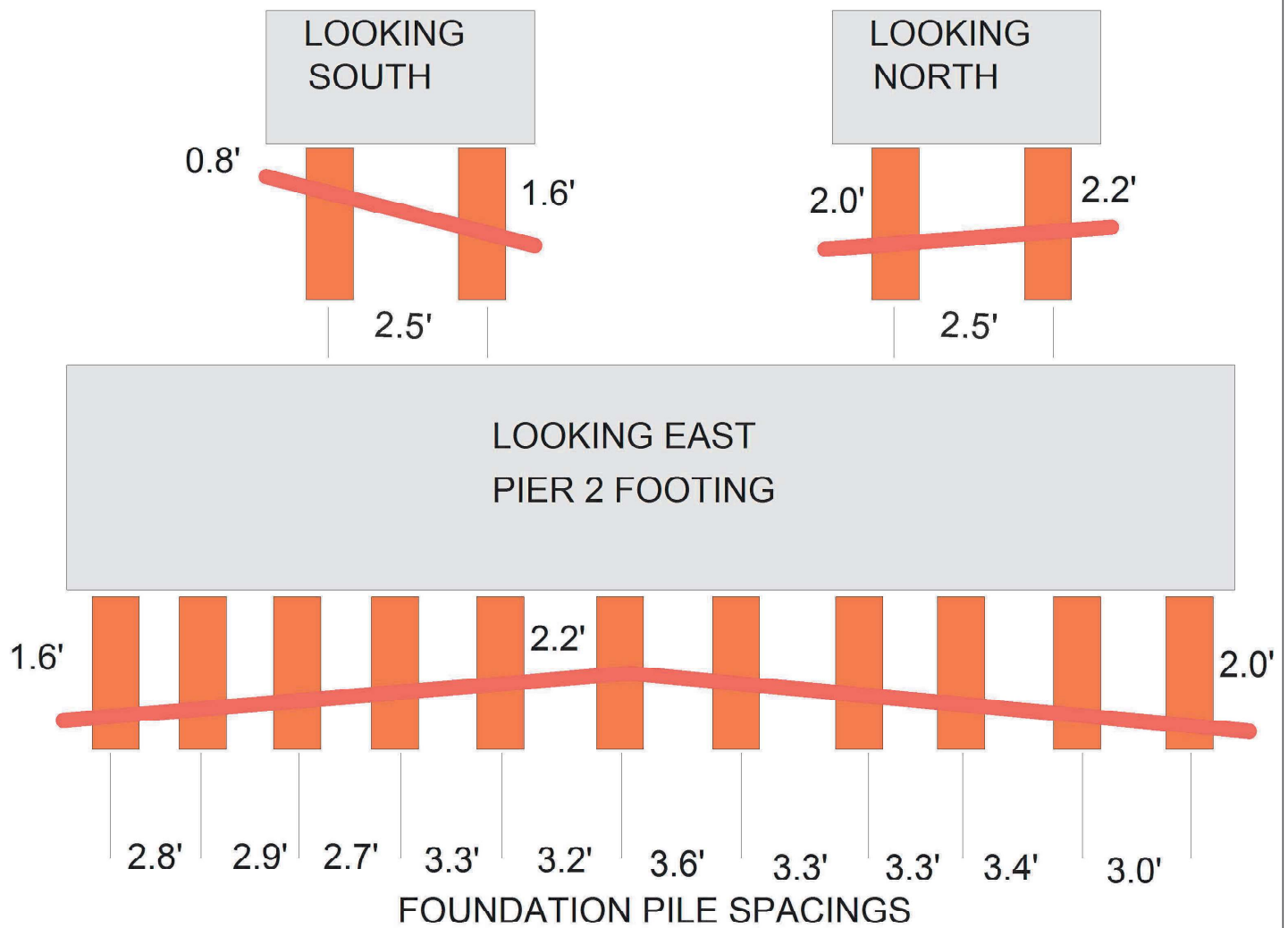
Bridge No: 230005

Drawn By: PGR

Date: 3/9/2016

File Name: S0174013219

Bridge Inspection Field Sketch

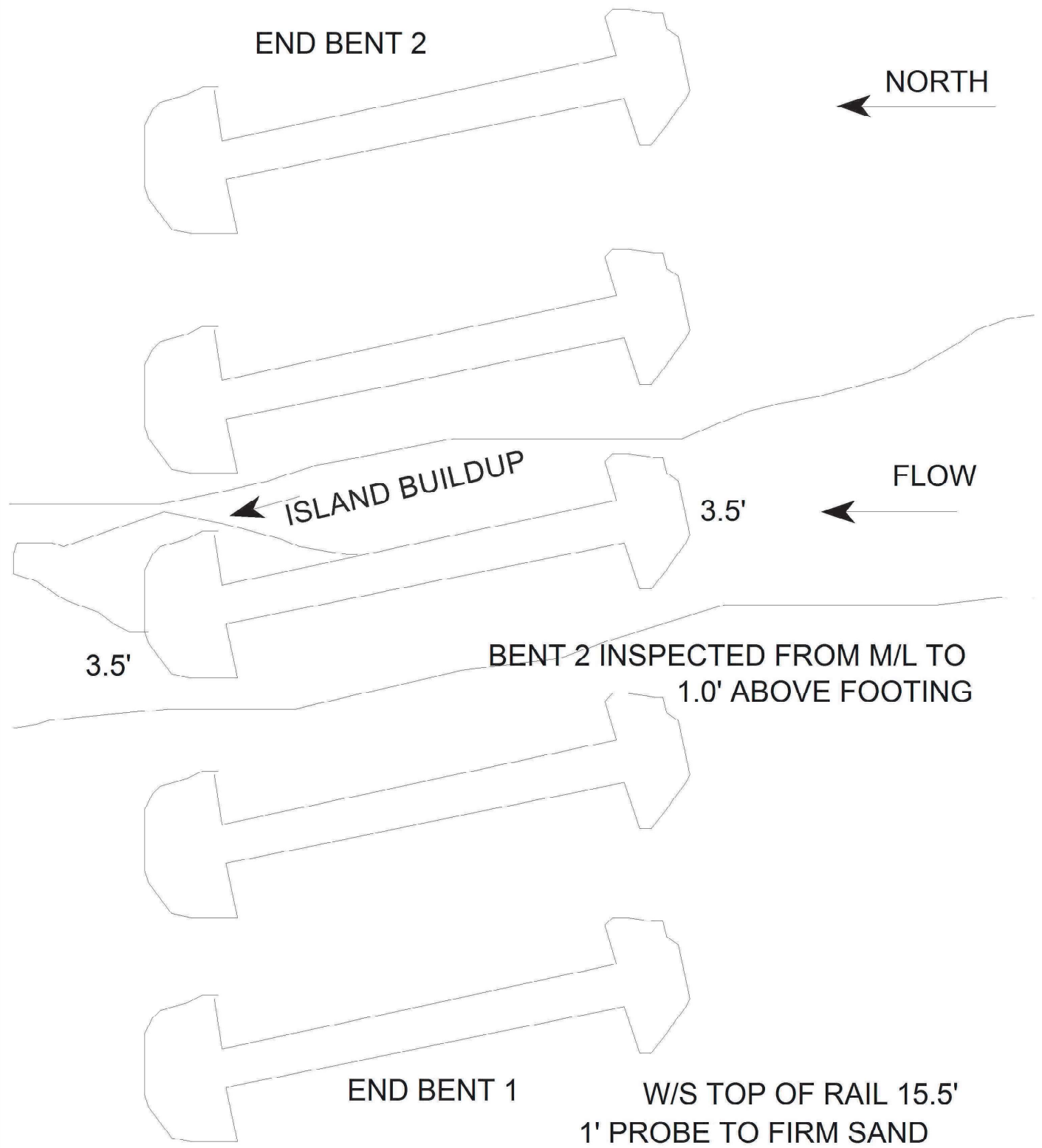


 = BOTTOM CONTOUR OF SCOUR

UPDATED 3/9/20 BY PGR

Title SCOUR CONTOUR		Description SIDE VIEW	
Bridge No: 230005	Drawn By: PGR	Date: 3/9/2016	File Name: S0174013220

Bridge Inspection Field Sketch



Title
PLAN VIEW

Description
TOP VIEW

Bridge No: 230005

Drawn By: PGR

Date: 3/9/20

File Name: S0174012405