



NC DEPARTMENT OF TRANSPORTATION
 DIVISION OF HIGHWAYS
 STRUCTURE MANAGEMENT UNIT

ATTENTION: **CHANGE TO STRUCTURE DATA, PAR SUBMITTED, REQUEST LIDAR, NEWLY STRUCTURALLY DEFICIENT**

Structure Safety Report

Routine Element Inspection - Contract

STRUCTURE NUMBER: 400225 SAP STRUCTURE NO: 0410225 FHWA STRUCTURE NO: 00000000810225

DIVISION: 7 COUNTY: GUILFORD INSPECTION DATE: 10/04/2022 FREQUENCY: 24 MONTHS

FACILITY CARRIED: SR1115 MILE POST: _____

LOCATION: 0.3 MI. W. JCT. SR3303

FEATURE INTERSECTED: I85BUS,US29/70

LATITUDE: 36° 1' 19.08" LONGITUDE: 79° 49' 7.61"

SUPERSTRUCTURE: **REINFORCED CONCRETE DECK ON I-BEAMS**
REINFORCED CONCRETE DECK ON I-BEAMS; APPROACH SLABS

SUBSTRUCTURE: END BTS:RC CAP ON STEEL PILES,INT.BTS:4COL.RCP&B ON SPRD FTG

SPANS: 4 SPANS. SEE SPAN PROFILE SHEET FOR SPAN DETAILS

FRACTURE CRITICAL TEMPORARY SHORING SCOUR CRITICAL SCOUR PLAN OF ACTION

GRADES: (Inspector/NBI Coding) DECK 4 / 4 SUPERSTRUCTURE 5 / 5 SUBSTRUCTURE 4 / 4 CULVERT N / N

POSTED SV: Not Posted POSTED TTST: Not Posted

OTHER SIGNS PRESENT: NONE



LOOKING EAST

Sign noticed issued for	Number Required
<u>NO</u> WEIGHT LIMIT	<u>0</u>
<u>NO</u> DELINEATORS	<u>0</u>
<u>NO</u> NARROW BRIDGE	<u>0</u>
<u>NO</u> ONE LANE BRIDGE	<u>0</u>
<u>NO</u> LOW CLEARANCE	<u>0</u>

DIRECTION OF INSPECTION W-E

DIRECTION MATCHES PLANS NO

INSPECTED BY Garrett Hamilton	SIGNATURE 	ASSISTED BY D. Drum
----------------------------------	---------------	------------------------

NATIONAL BRIDGE INVENTROY ----- STRUCTURE INVENTORY AND APPRAISAL

12/02/2022

IDENTIFICATION

(1) STATE NAME NORTH CAROLINA BRIDGE 400225
 (8) STRUCTURE NUMBER (FEDERAL) 0810225
 (5) INVENTORY ROUTE (ON/UNDER) ON 131011150
 (2) STATE HIGHWAY DEPARTMENT DISTRICT 7
 (3) COUNTY CODE (FEDERAL) 81 (4) PLACE CODE 28000
 (6) FEATURE INTERSECTED 185BUS,US29/70
 (7) FACILITY CARRIED SR1115
 (9) LOCATION 0.3 MI. W. JCT. SR3303
 (11) MILEPOINT 0.0
 (12) BASE HIGHWAY NETWORK 0
 (13) LRS INVENTORY ROUTE & SUBROUTE 0
 (16) LATITUDE 36° 1' 19.08" (17) LONGITUDE 79° 49' 7.61"
 (98) BORDER BRIDGE STATE CODE PERCENT SHARED
 (99) BORDER BRIDGE STRUCTURE NUMBER

SUFFICIENCY RATING 67.16
 STATUS = Structurally Deficient

CLASSIFICATION **CODE**

(112) NBIS BRIDGE SYSTEM Y
 (104) HIGHWAY SYSTEM Inventory Route not on NHS 0
 (26) FUNCTIONAL CLASS Urban Collector 17
 (100) STRAHNET HIGHWAY Not a STRAHNET Route 0
 (101) PARALLEL STRUCTURE 0
 (102) DIRECTION OF TRAFFIC 2-way traffic 2
 (103) TEMPORARY STRUCTURE
 (110) DESIGNATED NATIONAL NETWORK - on national network for trucks 0
 (20) TOLL On Free Road 3
 (21) MAINT - 01
 (22) OWNER - 01
 (37) HISTORICAL SIGNIFICANCE - 5

STRUCTURE TYPE AND MATERIAL

(43) STRUCTURE TYPE MAIN Steel
 TYPE Stringer/Multi-beam or girder CODE 302
 (44) STRUCTURE TYPE APPROACH
 TYPE CODE
 (45) NUMBER OF SPANS IN MAIN UNIT 4
 (46) NUMBER OF SPANS IN APPROACH 0
 (107) DECK STRUCTURE TYPE CODE 1
 (108) WEARING SURFACE/PROTECTIVE SYSTEM
 (A) TYPE OF WEARING SURFACE CODE 6
 (B) TYPE OF MEMBRANE CODE 0
 (C) TYPE OF DECK PROTECTION CODE 0

CONDITION **CODE**

(58) DECK 4
 (59) SUPERSTRUCTURE 5
 (60) SUBSTRUCTURE 4
 (61) CHANNEL & CHANNEL PROTECTION N
 (62) CULVERTS N

LOAD RATING AND POSTING **CODE**

(31) DESIGN LOAD H 20 + Mod 6
 (63) OPERATING RATING METHOD - Load Factor 1
 (64) OPERATING RATING - HS-38 68
 (65) INVENTORY RATING METHOD - 1
 (66) INVENTORY RATING HS-22 40
 (70) BRIDGE POSTING No Posting Required 5
 (41) STRUCTURE OPEN, POSTED, OR CLOSED DESCRIPTION Open, no restriction A

AGE AND SERVICE

(27) YEAR BUILT 1975
 (106) YEAR RECONSTRUCTED 0
 (42) TYPE OF SERVICE ON - Overpass Structure
 OFF - Highway CODE 61
 (28) LANES ON STRUCTURE 4 LANES UNDER STRUCTURE 16
 (29) AVERAGE DAILY TRAFFIC 7000
 (30) YEAR OF ADT 2019 (109) TRUCK ADT PCT 7
 (19) BYPASS OR DETOUR LENGTH 1.0

APPRAISAL **CODE**

(67) STRUCTURAL EVALUATION 4
 (68) DECK GEOMETRY N
 (69) UNDERCLEARANCES, VERT & HORIZ 4
 (71) WATERWAY ADEQUACY N
 (72) APPROACH ROADWAY ALIGNMENT 8
 (36) TRAFFIC SAFETY FEATURES 1111
 (113) SCOUR CRITICAL BRIDGES N

GEOMETRIC DATA

(48) LENGTH OF MAXIMUM SPAN 90.0
 (49) STRUCTURE LENGTH 255.0
 (50) CURB OR SIDEWALK: LEFT 0.0 RIGHT 0.0
 (51) BRIDGE ROADWAY WIDTH, CURB TO CURB 68.0
 (52) DECK WIDTH OUT TO OUT 70.0
 (32) APPROACH ROADWAY WITH (W/ SHOULDERS) 49.0
 (33) BRIDGE MEDIAN No median CODE 0
 (34) SKEW 16 (35) STRUCTURE FLARED 0
 (10) INVENTORY ROUTE MIN VERT CLEAR 999.9
 (47) INVENTORY ROUTE TOTAL HORIZ CLEAR 67.0
 (53) MIN VERT CLEAR OVER BRIDGE RDWY 999.9
 (54) MIN VERT UNDERCLEAR: REFERENCE H 16.4
 (55) MIN LAT UNDERCLEARANCE RT: REFERENCE H 11.0
 (56) MIN LAT UNDERCLEARANCE LT: 13.3

PROPOSED IMPROVEMENTS

(75) TYPE OF WORK CODE
 (76) LENGTH OF STRUCTURE IMPROVEMENT
 (94) BRIDGE IMPROVEMENT COST
 (95) ROADWAY IMPROVEMENT COST
 (96) TOTAL PROJECT COST
 (97) YEAR OF IMPROVEMENT COST ESTIMATE
 (114) FUTURE ADT 14,000 YEAR OF FUTURE ADT 2040

NAVIGATION DATA

(38) NAVIGATION CONTROL - CODE N
 (111) PIER PROTECTION CODE
 (39) NAVIGATION VERTICAL CLEARANCE 0.0
 (116) VERT - LIFT BRIDGE NAV MIN VERT CLEAR 0.0
 (40) NAVIGATION HORIZONTAL CLEARANCE 0.0

INSPECTION

(90) INSPECTION DATE 10/22 (91) FREQUENCY 24
 (92) CRITICAL FEATURE INSPECTION (93) CFI DATE
 A) FRACTURE CRIT DETAIL A)
 B) UNDERWATER INSP B)
 C) OTHER SPECIAL INSP C)

SCOUR

Span Number	Facility Carried	Inventory Route	Maximum Minimum Vertical Clearance	Milepoint	Base Highway	LRS Inventory Route	Functional Classification	Number of Lanes	Average Daily Traffic	Year of Average Daily Traffic	Total Horizontal Clearance	See Note Below					STRAHNET Highway	Direction of Traffic	National Highway System	National Truck Network
												Reference Feature	Minimum Vertical Underclearance	Righth Lateral Underclearance	Left Lateral Underclearance	Underclearance Appraisal Grade				
	7	5	10	11	12	13	26	28	29	30	47	54A	54	55	56	69	100	102	104	110
2	I85S,US29S,US70W	16000850	16.6	35.2	1	10085	12	4	19000	2015	72.8	H	16.1	23.4	19.2	5		1	<input type="checkbox"/>	<input type="checkbox"/>
3	I85N,US29N,US70E	16000850	17.4	35.2	1	10085	12	4	19000	2015	72.3	H	16.4	23.0	18.8	5		1	<input type="checkbox"/>	<input type="checkbox"/>

Note: Items 54, 55, and 56 are not reported FHWA under route data points but are collected for each under route to determine the minimum value for Underclearance Appraisal Item 69.

Superstructure Build Details

Span Number 1

Span Length 33.875

Skew 71.736

Number of Items	Type of Component	Element Name	Quantity	Protective System Applied	Quantity (Sq Ft)
1	Reinforced Concrete Deck	Reinforced Concrete Deck	2372 Square Feet		
9	Fixed Bearing	Fixed Bearing	9 Each	Organic Zinc Primer with Acrylic Topcoat	9
9	Plate Girder	Steel Open Girder/Beam	2493 Feet	Legacy Non Lead Primer System with various Topcoats	2493
2	Concrete and Metal Railing	Other Bridge Railing	68 Feet		
9	Movable Bearing	Movable Bearing	9 Each	Organic Zinc Primer with Acrylic Topcoat	9

Span Number 2

Span Length 92.891

Skew 73.000

Number of Items	Type of Component	Element Name	Quantity	Protective System Applied	Quantity (Sq Ft)
9	Plate Girder	Steel Open Girder/Beam	837 Feet	Legacy Non Lead Primer System with various Topcoats	9612
1	Reinforced Concrete Deck	Reinforced Concrete Deck	6503 Square Feet		
1	Concrete Wearing Surface	Wearing Surface	4691 Square Feet		
1	Standard Joint	Pourable Joint Seal	71 Feet		
9	Movable Bearing	Movable Bearing	9 Each	Organic Zinc Primer with Acrylic Topcoat	9
9	Fixed Bearing	Fixed Bearing	9 Each	Organic Zinc Primer with Acrylic Topcoat	9
2	Concrete and Metal Railing	Other Bridge Railing	186 Feet		

Span Number 3

Span Length 92.030

Skew 74.850

Number of Items	Type of Component	Element Name	Quantity	Protective System Applied	Quantity (Sq Ft)
1	Reinforced Concrete Deck	Reinforced Concrete Deck	6443 Square Feet		
9	Fixed Bearing	Fixed Bearing	9 Each	Organic Zinc Primer with Acrylic Topcoat	9
9	Plate Girder	Steel Open Girder/Beam	837 Feet	Legacy Non Lead Primer System with various Topcoats	9522
1	Standard Joint	Pourable Joint Seal	71 Feet		
2	Concrete and Metal Railing	Other Bridge Railing	184 Feet		

Superstructure Build Details

1	Concrete Wearing Surface	Wearing Surface	4648	Square Feet		
9	Movable Bearing	Movable Bearing	9	Each	Organic Zinc Primer with Acrylic Topcoat	9

Span Number 4

Span Length 35.708

Skew 71.736

Number of Items	Type of Component	Element Name	Quantity	Protective System Applied	Quantity (Sq Ft)	
2	Concrete Railing	Reinforced Concrete Bridge Railing	72	Feet		
1	Concrete Wearing Surface	Wearing Surface	1804	Square Feet		
1	Reinforced Concrete Deck	Reinforced Concrete Deck	2500	Square Feet		
9	Plate Girder	Steel Open Girder/Beam	324	Feet	Legacy Non Lead Primer System with various Topcoats	2746
9	Movable Bearing	Movable Bearing	9	Each	Organic Zinc Primer with Acrylic Topcoat	9
9	Fixed Bearing	Fixed Bearing	9	Each	Organic Zinc Primer with Acrylic Topcoat	9
1	Standard Joint	Pourable Joint Seal	71	Feet		

Structure Element Scoring

Structure Number: 400225

Inspection Date 10/4/2022

Element Number	Parent Number	Element Name	Location	Total Quantity	Level 1 Quantity	Level 2 Quantity	Level 3 Quantity	Level 4 Quantity
12		Reinforced Concrete Deck	Deck	17,818	4,767	10,439	2,612	0
107		Steel Open Girder/Beam	Beam	4,491	4,436	11	43	1
515	107	Steel Protective Coating	Beam	24,373	24,335	0	29	9
301		Pourable Joint Seal	Expansion Joints	213	176	0	16	21
311		Movable Bearing	Bearing Device	36	5	31	0	0
515	311	Steel Protective Coating	Bearing Device	36	5	14	17	0
313		Fixed Bearing	Bearing Device	36	20	11	5	0
515	313	Steel Protective Coating	Bearing Device	36	20	1	11	4
331		Reinforced Concrete Bridge Railing	Bridge Rail	72	0	72	0	0
333		Other Bridge Railing	Bridge Rail	438	0	420	18	0
510		Wearing Surface	Wearing Surfaces	11,143	11,060	0	83	0
205		Reinforced Concrete Column	Piles and Columns	12	0	2	10	0
215		Reinforced Concrete Abutment	Abutments	140	42	98	0	0
225		Steel Pile	Piles and Columns	30	30	0	0	0
234		Reinforced Concrete Pier Cap	Caps	372	99	123	150	0

Summary of Maintenance Needs

Maintenance By Defect

Structure Number: **400225**

Inspection Date: **10/04/2022**

MMS Code	Element Name	Defect Name	Recommended Quantity
3326	Reinforced Concrete Deck	Cracking (RC and Other)	10310 Square Feet
3326	Reinforced Concrete Deck	Delamination/Spall	1303 Square Feet
3326	Reinforced Concrete Deck	Exposed Rebar	3 Square Feet
3326	Reinforced Concrete Deck	Patched Areas	60 Square Feet
3314	Steel Open Girder/Beam	Corrosion	39 Feet
3348	Reinforced Concrete Column	Cracking (RC and Other)	105 Each
3348	Reinforced Concrete Column	Delamination/Spall	10 Each
3348	Reinforced Concrete Column	Patched Area	25 Each
3348	Reinforced Concrete Pier Cap	Patched Area	2 Feet
3348	Reinforced Concrete Pier Cap	Exposed Rebar	21 Feet
3348	Reinforced Concrete Pier Cap	Delamination/Spall	34 Feet
3348	Reinforced Concrete Pier Cap	Cracking (RC and Other)	155 Feet
3310	Pourable Joint Seal	Seal Adhesion	15 Feet
3310	Pourable Joint Seal	Debris Impaction	6 Feet
3334	Fixed Bearing	Corrosion	5 Each
3318	Other Bridge Railing	Connection	1 Feet
3318	Other Bridge Railing	Delamination/Spall	1 Feet
3318	Other Bridge Railing	Cracking (RC and Other)	16 Feet
2816	Wearing Surface	Crack (Wearing Surface)	79 Square Feet
2816	Wearing Surface	Patched Area/Pothole (Wearing Surface)	4 Square Feet
3342	Steel Protective Coating	Effectiveness (Steel Protective Coatings)	84 Square Feet

Element Structure Maintenance Quantities

Structure Number: **400225**

Inspection Date **10/04/2022**

Location	MMS Code	Description	Maint Quantity	Total Quantity	Severe Quantity	Poor Quantity	Fair Quantity	Good Quantity
Beam	3314	Maintenance Steel Superstructure Components	39	4491	1.000	43.000	11.000	4436.000
Beam	3342	Clean and Paint Steel	38	24373	9.000	29.000	0.000	24335.000
Bearing Device	3334	Bridge Bearing	0	36	0.000	0.000	31.000	5.000
Bearing Device	3334	Bridge Bearing	5	36	0.000	5.000	11.000	20.000
Bearing Device	3342	Clean and Paint Steel	30	36	0.000	17.000	14.000	5.000
Bearing Device	3342	Clean and Paint Steel	16	36	4.000	11.000	1.000	20.000
Bridge Rail	3318	Maintenance of Concrete Bridge Rail	0	72	0.000	0.000	72.000	0.000
Bridge Rail	3318	Maintenance of Concrete Bridge Rail	18	438	0.000	18.000	420.000	0.000
Deck	3326	Maintenance of Concrete Deck	11676	17818	0.000	2612.000	10439.000	4767.000
Expansion Joints	3310	Maintenance of Standard Bridge Expansion Joints	21	213	21.000	16.000	0.000	176.000
Wearing Surfaces	2816	Asphalt Surface Repair	83	11143	0.000	83.000	0.000	11060.000
Abutments	3350	Maintenance of Concrete Wings and Wall	0	140	0.000	0.000	98.000	42.000
Caps	3348	Maintenance of Concrete Substructure	212	372	0.000	150.000	123.000	99.000
Piles and Columns	3348	Maintenance of Concrete Substructure	140	12	0.000	10.000	2.000	0.000
Piles and Columns	3354	Maintenance of Steel Substructure Components	0	30	0.000	0.000	0.000	30.000

Priority Actions Request

Structure Number 400225

Span1

3318 Left Bridge Rail Concrete and Metal Railing

Priority Level	Defect Type	Quantity	Defect Description
1	Connection	1	Span 1 Left Bridge Rail: PAR: 1 BOLT OF LEFT GUARDRAIL CONNECTION AT END BENT 1 HAS FAILED, CONNECTION STILL FUNCTIONING

Span3

3326 Deck Reinforced Concrete Deck

Priority Level	Defect Type	Quantity	Defect Description
2	Exposed Rebar	1	Span 3 Deck: PAR: 10 INCH DIAMETER X 1 INCH DEEP SPALL WITH EXPOSED REBAR, 5 PERCENT SECTION LOSS, IN UNDERSIDE BAY 3 AT 3 FEET PAST CENTER DIAPHRAGM
2	Exposed Rebar	2	Span 3 Deck: PAR: 2 FEET X 10 INCH X 5 INCH DEEP SPALL WITH EXPOSED REBAR, 5 PERCENT SECTION LOSS, IN UNDERSIDE OF BAY 5 OVER BENT 2

3314 Beam 1 Plate Girder

Priority Level	Defect Type	Quantity	Defect Description
2	Damage	2	Span 3 Beam 1: PAR: AT BENT 2 LEFT OVERHANG DIAPHRAGM, SPALL 2 FOOT WIDE X 8 INCH LONG X 2 INCH DEEP WITH EXPOSED REBAR, 5 PERCENT SECTION LOSS

3314 Beam 4 Plate Girder

Priority Level	Defect Type	Quantity	Defect Description
2	Corrosion	1	Span 3 Beam 4: PAR: CORROSION WITH 5/16 INCH SECTION LOSS (15/16 INCH REMAINING) ON LEFT BOTTOM FLANGE FOR OUTER 2 INCH FOR 9 INCH LONG STARTING 7 INCH FROM BENT 3

Bent 3

3348 Cap 1 Reinforced Concrete Pier Cap

Priority Level	Defect Type	Quantity	Defect Description
2	Delamination/Spall	1	Bent 3 Cap 1: PAR: 6 INCH X 4 INCH X 5 INCH SPALL ON PEDESTAL UNDER GIRDER 5 SPAN 4 WITH 1 INCH X 1 1/2 INCH UNDER BEARING, NO EXPOSED REINFORCEMENT

Element Condition and Maintenance Data

Structure Number: 400225

Inspection Date: 10/04/2022

Span 1 **Deck**
Reinforced Concrete Deck

Element Number	Element Name	Total Qty	CS1 Qty	CS2 Qty	CS3 Qty	CS4 Qty	
12	Reinforced Concrete Deck	2,372	0	1,179	1,193	0	Square Feet

Element Number	Defect Type	Defect Description	CS	CS Qty	Maint Qty	
<input checked="" type="checkbox"/> 12	Cracking (RC and Other)	SCATTERED MAP CRACKING UP TO 1/16 INCH WIDE THROUGHOUT UNDERSIDE OF DECK IN ALL SPANS	3	1,186	1,186	Square Feet
<input checked="" type="checkbox"/> 12	Delamination/Spall	LEFT EASTBOUND LANE, SPALL, 1 FOOT WIDE X 4 INCH LONG X 1 1/2 DEEP	3	1	1	Square Feet
<input checked="" type="checkbox"/> 12	Delamination/Spall	TOP OF DECK IN FAR RIGHT EASTBOUND LANE AT BENT 1, 6 FEET X 1 FOOT DELAMINATION WITH CRACKING UP TO 1/8 INCH WIDE	3	6	6	Square Feet
<input checked="" type="checkbox"/> 12	Cracking (RC and Other)	HAIRLINE MAP CRACKING TOPSIDE WITH WEARING SCATTERED THROUGHOUT	2	1,179	1,179	Square Feet
<input checked="" type="checkbox"/> 12	Cracking (RC and Other)	SCATTERED HAIRLINE TRANSVERSE CRACKS IN UNDERSIDE OF BOTH OVERHANGS, (4) IN NORTH OVERHANG, (6) IN SOUTH OVERHANG	2			Square Feet

General Comments

Span 1 **Left Bridge Rail**
Concrete and Metal Railing

Element Number	Element Name	Total Qty	CS1 Qty	CS2 Qty	CS3 Qty	CS4 Qty	
333	Other Bridge Railing	34	0	24	10	0	Feet

Element Number	Defect Type	Defect Description	CS	CS Qty	Maint Qty	
<input checked="" type="checkbox"/> 333	Connection	PAR: 1 BOLT OF LEFT GUARDRAIL CONNECTION AT END BENT 1 HAS FAILED, CONNECTION STILL FUNCTIONING	3	1	1	Feet
<input checked="" type="checkbox"/> 333	Cracking (RC and Other)	MAP CRACKING UP TO 1/16 INCH WIDE X UP TO FULL HEIGHT NEAR BENT 1 FOR 8 FEET LONG	3	8	8	Feet
<input checked="" type="checkbox"/> 333	Delamination/Spall	6 INCH X 3 INCH X 1 INCH DEEP SPALL AT BENT 1, NO EXPOSED REINFORCEMENT	3	1	1	Feet
<input checked="" type="checkbox"/> 333	Cracking (RC and Other)	HAIRLINE VERTICAL CRACKING THROUGHOUT, UP TO FULL HEIGHT	2	24		Feet
<input checked="" type="checkbox"/> 333	Deterioration (Other)	SCATTERED ABRASION WITH EXPOSED AGGREGATE THROUGHOUT, AGGREGATE STABLE	2			Feet

General Comments

Span 1 **Right Bridge Rail**
Concrete and Metal Railing

Element Number	Element Name	Total Qty	CS1 Qty	CS2 Qty	CS3 Qty	CS4 Qty	
333	Other Bridge Railing	34	0	34	0	0	Feet

Element Number	Defect Type	Defect Description	CS	CS Qty	Maint Qty	
<input checked="" type="checkbox"/> 333	Cracking (RC and Other)	HAIRLINE VERTICAL CRACKING THROUGHOUT, UP TO FULL HEIGHT	2	34		Feet

General Comments**Span 1****Beam 1****Plate Girder**

Element Number	Element Name	Total Qty	CS1 Qty	CS2 Qty	CS3 Qty	CS4 Qty
107	Steel Open Girder/Beam	277	276	1	0	0 Feet
515	Steel Protective Coating	277	277	0	0	0 Square Feet

Element Number	Defect Type	Defect Description	CS	CS Qty	Maint Qty
<input checked="" type="checkbox"/> 107	Damage	AT BENT 1 LEFT OVERHANG DIAPHRAGM, DELAMINATION, 12 INCH X 6 INCH WITH RUST STAINS	2	1	Feet

General Comments**Span 1****Beam 2****Plate Girder**

Element Number	Element Name	Total Qty	CS1 Qty	CS2 Qty	CS3 Qty	CS4 Qty
107	Steel Open Girder/Beam	277	276	0	1	0 Feet
515	Steel Protective Coating	277	276	0	1	0 Square Feet

Element Number	Defect Type	Defect Description	CS	CS Qty	Maint Qty
<input checked="" type="checkbox"/> 107	Corrosion	AT BENT 1, CORROSION WITH 1/8 INCH SECTION LOSS (7/16 INCH REMAINING) ON TOP 1 INCH OF WEB FOR 9 INCH LONG	3	1	1 Feet
<input checked="" type="checkbox"/> 515	Effectiveness (Steel Protective Coatings)	SECTION LOSS PAINTED OVER, COATING HAS LIMITED EFFECTIVENESS, CORROSION NOT FULLY ARRESTED	3	1	1 Square Feet

General Comments**Span 1****Beam 3****Plate Girder**

Element Number	Element Name	Total Qty	CS1 Qty	CS2 Qty	CS3 Qty	CS4 Qty
107	Steel Open Girder/Beam	277	276	0	1	0 Feet
515	Steel Protective Coating	277	276	0	1	0 Square Feet

Element Number	Defect Type	Defect Description	CS	CS Qty	Maint Qty
<input checked="" type="checkbox"/> 107	Corrosion	AT BENT 1, CORROSION WITH 1/8 INCH SECTION LOSS (7/16 INCH REMAINING) ON TOP 6 INCH OF WEB FOR 9 INCH	3	1	1 Feet
<input checked="" type="checkbox"/> 515	Effectiveness (Steel Protective Coatings)	SECTION LOSS PAINTED OVER, COATING HAS LIMITED EFFECTIVENESS, CORROSION NOT FULLY ARRESTED	3	1	1 Square Feet

General Comments

Span 1**Beam 4****Plate Girder**

Element Number	Element Name	Total Qty	CS1 Qty	CS2 Qty	CS3 Qty	CS4 Qty
107	Steel Open Girder/Beam	277	276	1	0	0 Feet
515	Steel Protective Coating	277	276	0	1	0 Square Feet

Element Number	Defect Type	Defect Description	CS	CS Qty	Maint Qty
<input checked="" type="checkbox"/> 107	Corrosion	AT BENT 1, TOP 9 INCHES OF WEB HAS A REPAIR PLATE, 9 INCH HIGH X 9 INCH LONG X 1/2 INCH THICK WITH RUST SCALE	2	1	Feet
<input checked="" type="checkbox"/> 515	Effectiveness (Steel Protective Coatings)	AT BENT 1, LIMITED EFFECTIVENESS, NO PROTECTION OF UNDERLYING METAL	3	1	1 Square Feet

General Comments**Span 1****Beam 5****Plate Girder**

Element Number	Element Name	Total Qty	CS1 Qty	CS2 Qty	CS3 Qty	CS4 Qty
107	Steel Open Girder/Beam	277	276	0	1	0 Feet
515	Steel Protective Coating	277	276	0	1	0 Square Feet

Element Number	Defect Type	Defect Description	CS	CS Qty	Maint Qty
<input checked="" type="checkbox"/> 107	Corrosion	AT BENT 1, CORROSION WITH 1/8 INCH SECTION LOSS (7/16 INCH REMAINING) ON TOP 1 INCH OF WEB FOR 9 INCH LONG	3	1	1 Feet
<input checked="" type="checkbox"/> 515	Effectiveness (Steel Protective Coatings)	SECTION LOSS PAINTED OVER, COATING HAS LIMITED EFFECTIVENESS, CORROSION NOT FULLY ARRESTED	3	1	1 Square Feet

General Comments**Span 1****Beam 6****Plate Girder**

Element Number	Element Name	Total Qty	CS1 Qty	CS2 Qty	CS3 Qty	CS4 Qty
107	Steel Open Girder/Beam	277	276	0	1	0 Feet
515	Steel Protective Coating	277	276	0	1	0 Square Feet

Element Number	Defect Type	Defect Description	CS	CS Qty	Maint Qty
<input checked="" type="checkbox"/> 107	Corrosion	AT BENT 1, CORROSION WITH 1/8 INCH SECTION LOSS (7/16 INCH REMAINING) ON TOP 6 INCH AND BOTTOM 6 INCH OF WEB FOR 9 INCH LONG	3	1	1 Feet
<input checked="" type="checkbox"/> 515	Effectiveness (Steel Protective Coatings)	SECTION LOSS PAINTED OVER, COATING HAS LIMITED EFFECTIVENESS, CORROSION NOT FULLY ARRESTED	3	1	1 Square Feet

General Comments

Span 1**Beam 7****Plate Girder**

Element Number	Element Name	Total Qty	CS1 Qty	CS2 Qty	CS3 Qty	CS4 Qty
107	Steel Open Girder/Beam	277	276	0	1	0 Feet
515	Steel Protective Coating	277	276	0	1	0 Square Feet

Element Number	Defect Type	Defect Description	CS	CS Qty	Maint Qty
<input checked="" type="checkbox"/> 107	Corrosion	AT BENT 1, CORROSION WITH 1/8 INCH SECTION LOSS (7/16 INCH REMAINING) ON TOP 3 INCH AND BOTTOM 6 INCH OF WEB FOR 9 INCH LONG	3	1	1 Feet
<input checked="" type="checkbox"/> 515	Effectiveness (Steel Protective Coatings)	SECTION LOSS PAINTED OVER, COATING HAS LIMITED EFFECTIVENESS, CORROSION NOT FULLY ARRESTED	3	1	1 Square Feet

General Comments**Span 1****Near Bearing****Fixed Bearing**

Element Number	Element Name	Total Qty	CS1 Qty	CS2 Qty	CS3 Qty	CS4 Qty
313	Fixed Bearing	1	0	1	0	0 Each
515	Steel Protective Coating	1	0	1	0	0 Square Feet

Element Number	Defect Type	Defect Description	CS	CS Qty	Maint Qty
<input checked="" type="checkbox"/> 313	Corrosion	FRECKLED RUST ON BEARING PLATES	2	1	Each
<input checked="" type="checkbox"/> 515	Effectiveness (Steel Protective Coatings)	COATING IS SUBSTANTIALLY EFFECTIVE, FRECKLED RUST PRESENT	2	1	1 Square Feet

General Comments**Span 1****Far Bearing****Movable Bearing**

Element Number	Element Name	Total Qty	CS1 Qty	CS2 Qty	CS3 Qty	CS4 Qty
311	Movable Bearing	1	0	1	0	0 Each
515	Steel Protective Coating	1	0	1	0	0 Square Feet

Element Number	Defect Type	Defect Description	CS	CS Qty	Maint Qty
<input checked="" type="checkbox"/> 311	Corrosion	FRECKLED RUST ON BEARING PLATES	2	1	Each
<input checked="" type="checkbox"/> 515	Effectiveness (Steel Protective Coatings)	COATING IS SUBSTANTIALLY EFFECTIVE, FRECKLED RUST PRESENT	2	1	1 Square Feet

General Comments

Span 1 Near Bearing
Fixed Bearing

Element Number	Element Name	Total Qty	CS1 Qty	CS2 Qty	CS3 Qty	CS4 Qty	
313	Fixed Bearing	1	0	1	0	0	Each
515	Steel Protective Coating	1	0	0	1	0	Square Feet

Element Number	Defect Type	Defect Description	CS	CS Qty	Maint Qty	
<input checked="" type="checkbox"/> 313	Corrosion	SURFACE CORROSION ON BEARING PLATES	2	1		Each
<input checked="" type="checkbox"/> 515	Effectiveness (Steel Protective Coatings)	PROTECTIVE COATING INEFFECTIVE, SURFACE CORROSION PRESENT	3	1	1	Square Feet

General Comments

Span 1 Far Bearing
Movable Bearing

Element Number	Element Name	Total Qty	CS1 Qty	CS2 Qty	CS3 Qty	CS4 Qty	
311	Movable Bearing	1	0	1	0	0	Each
515	Steel Protective Coating	1	0	0	1	0	Square Feet

Element Number	Defect Type	Defect Description	CS	CS Qty	Maint Qty	
<input checked="" type="checkbox"/> 311	Corrosion	SURFACE CORROSION ON BEARING PLATES	2	1		Each
<input checked="" type="checkbox"/> 515	Effectiveness (Steel Protective Coatings)	PROTECTIVE COATING INEFFECTIVE, SURFACE CORROSION PRESENT	3	1	1	Square Feet

General Comments

Span 1 Far Bearing
Movable Bearing

Element Number	Element Name	Total Qty	CS1 Qty	CS2 Qty	CS3 Qty	CS4 Qty	
311	Movable Bearing	1	0	1	0	0	Each
515	Steel Protective Coating	1	0	1	0	0	Square Feet

Element Number	Defect Type	Defect Description	CS	CS Qty	Maint Qty	
<input checked="" type="checkbox"/> 311	Corrosion	FRECKLED RUST ON BEARING PLATES	2	1		Each
<input checked="" type="checkbox"/> 515	Effectiveness (Steel Protective Coatings)	COATING IS SUBSTANTIALLY EFFECTIVE, FRECKLED RUST PRESENT	2	1	1	Square Feet

General Comments

Span 1 Far Bearing
Movable Bearing

Element Number	Element Name	Total Qty	CS1 Qty	CS2 Qty	CS3 Qty	CS4 Qty	
311	Movable Bearing	1	0	1	0	0	Each
515	Steel Protective Coating	1	0	0	1	0	Square Feet

Element Number	Defect Type	Defect Description	CS	CS Qty	Maint Qty	
<input checked="" type="checkbox"/> 311	Corrosion	SURFACE CORROSION ON BEARING PLATES	2	1		Each

<input checked="" type="checkbox"/>	515	Effectiveness (Steel Protective Coatings)	PROTECTIVE COATING INEFFECTIVE, SURFACE CORROSION PRESENT	3	1	1	Square Feet
-------------------------------------	------------	---	---	---	---	---	-------------

General Comments**Span 1 Far Bearing****Movable Bearing**

Element Number	Element Name	Total Qty	CS1 Qty	CS2 Qty	CS3 Qty	CS4 Qty	
311	Movable Bearing	1	0	1	0	0	Each
515	Steel Protective Coating	1	0	0	1	0	Square Feet

Element Number	Defect Type	Defect Description	CS	CS Qty	Maint Qty	
<input checked="" type="checkbox"/>	311	Corrosion				Each
<input checked="" type="checkbox"/>	515	Effectiveness (Steel Protective Coatings)				1 Square Feet

General Comments**Span 1 Far Bearing****Movable Bearing**

Element Number	Element Name	Total Qty	CS1 Qty	CS2 Qty	CS3 Qty	CS4 Qty	
311	Movable Bearing	1	0	1	0	0	Each
515	Steel Protective Coating	1	0	0	1	0	Square Feet

Element Number	Defect Type	Defect Description	CS	CS Qty	Maint Qty	
<input checked="" type="checkbox"/>	311	Corrosion				Each
<input checked="" type="checkbox"/>	515	Effectiveness (Steel Protective Coatings)				1 Square Feet

General Comments**Span 1 Far Bearing****Movable Bearing**

Element Number	Element Name	Total Qty	CS1 Qty	CS2 Qty	CS3 Qty	CS4 Qty	
311	Movable Bearing	1	0	1	0	0	Each
515	Steel Protective Coating	1	0	1	0	0	Square Feet

Element Number	Defect Type	Defect Description	CS	CS Qty	Maint Qty	
<input checked="" type="checkbox"/>	311	Corrosion				Each
<input checked="" type="checkbox"/>	515	Effectiveness (Steel Protective Coatings)				Square Feet

General Comments

Span 1 Far Bearing
Movable Bearing

Element Number	Element Name	Total Qty	CS1 Qty	CS2 Qty	CS3 Qty	CS4 Qty	
311	Movable Bearing	1	0	1	0	0	Each
515	Steel Protective Coating	1	0	1	0	0	Square Feet

Element Number	Defect Type	Defect Description	CS	CS Qty	Maint Qty	
<input checked="" type="checkbox"/> 311	Corrosion	FRECKLED RUST ON BEARING PLATES	2	1		Each
<input checked="" type="checkbox"/> 515	Effectiveness (Steel Protective Coatings)	COATING IS SUBSTANTIALLY EFFECTIVE, FRECKLED RUST PRESENT	2	1	1	Square Feet

General Comments

Span 2 Deck
Reinforced Concrete Deck

Element Number	Element Name	Total Qty	CS1 Qty	CS2 Qty	CS3 Qty	CS4 Qty	
12	Reinforced Concrete Deck	6,503	3,520	2,460	523	0	Square Feet

Element Number	Defect Type	Defect Description	CS	CS Qty	Maint Qty	
<input checked="" type="checkbox"/> 12	Cracking (RC and Other)	BAY 4 STARTING 15 FEET FROM BENT 2, 2 AREAS UP TO 20 SQUARE FEET OF CRACKING UP TO 1/16 INCH WIDE WITH RUST STAINING	3	40	40	Square Feet
<input checked="" type="checkbox"/> 12	Delamination/Spall	3 FEET WIDE DELAMINATION ALONG LEFT SHOULDER FOR ENTIRE SPAN LENGTH	3	460	460	Square Feet
<input checked="" type="checkbox"/> 12	Delamination/Spall	5 INCH X 9 INCH X 5 INCH DEEP SPALL ON LEFT SHOULDER AT BENT 1 JOINT, REBAR COVERED BY PACKED DEBRIS	3	5	5	Square Feet
<input checked="" type="checkbox"/> 12	Delamination/Spall	6 FEET X 6 INCH X 5 INCH DEEP SPALL ON LEFT SHOULDER AT BENT 2 JOINT, REBAR COVERED BY PACKED DEBRIS	3	6	6	Square Feet
<input checked="" type="checkbox"/> 12	Delamination/Spall	MIDSPAN, ALONG RIGHT SHOULDER, 12 SQUARE FEET OF DELAMINATION	3	12	12	Square Feet
<input checked="" type="checkbox"/> 12	Cracking (RC and Other)	HAIRLINE MAP CRACKING IN TOP OF LEFT AND RIGHT SHOULDERS FOR FULL WIDTH OF SHOULDER X FULL LENGTH OF SPAN	2	1,260	1,260	Square Feet
<input checked="" type="checkbox"/> 12	Cracking (RC and Other)	HAIRLINE MAP CRACKING WITH EFFLORESCENCE SCATTERED THROUGHOUT UNDERSIDE	2	1,200	1,200	Square Feet

General Comments

Span 2 Beam 1
Plate Girder

Element Number	Element Name	Total Qty	CS1 Qty	CS2 Qty	CS3 Qty	CS4 Qty	
107	Steel Open Girder/Beam	93	88	1	4	0	Feet
515	Steel Protective Coating	1,068	1,065	0	3	0	Square Feet

Element Number	Defect Type	Defect Description	CS	CS Qty	Maint Qty	
----------------	-------------	--------------------	----	--------	-----------	--

Structure Number: **400225**

Inspection Date: **10/04/2022**

<input checked="" type="checkbox"/>	107	Corrosion	CORROSION WITH 1/8 INCH SECTION LOSS (1 1/8 INCH REMAINING) ON BOTTOM FLANGES FOR OUTER 2 INCH FOR 3 FEET AT BENT 1 AND 1/8 INCH SECTION LOSS (5/8 INCH REMAINING) ON TOP 1 INCH OF WEB FOR 9 INCH LONG AT BENT 1	3	3	3 Feet
<input checked="" type="checkbox"/>	107	Damage	AT BENT 1 BAY 1 DIAPHRAGM, SPALL, 1 FOOT LONG X 2 INCH HIGH X 1 INCH DEEP	3	1	Feet
<input checked="" type="checkbox"/>	107	Damage	AT BENT 1 LEFT OVERHANG DIAPHRAGM, DELAMINATION, 12 INCH X 6 INCH WITH EFFLORESCENCE	2	1	Feet
<input checked="" type="checkbox"/>	515	Effectiveness (Steel Protective Coatings)	SECTION LOSS PAINTED OVER, COATING HAS LIMITED EFFECTIVENESS, CORROSION NOT FULLY ARRESTED	3	3	3 Square Feet

General Comments

Span 2 Beam 2 Plate Girder

Element Number	Element Name	Total Qty	CS1 Qty	CS2 Qty	CS3 Qty	CS4 Qty
107	Steel Open Girder/Beam	93	92	0	1	0 Feet
515	Steel Protective Coating	1,068	1,067	0	1	0 Square Feet

Element Number	Defect Type	Defect Description	CS	CS Qty	Maint Qty
<input checked="" type="checkbox"/>	107	Corrosion			
		CORROSION WITH 1/8 INCH SECTION LOSS (5/8 INCH REMAINING) ON TOP 1 INCH OF WEB FOR 9 INCH LONG AT BENT 1	3	1	1 Feet
<input checked="" type="checkbox"/>	515	Effectiveness (Steel Protective Coatings)			
		SECTION LOSS PAINTED OVER, COATING HAS LIMITED EFFECTIVENESS, CORROSION NOT FULLY ARRESTED	3	1	1 Square Feet

General Comments

Span 2 Beam 3 Plate Girder

Element Number	Element Name	Total Qty	CS1 Qty	CS2 Qty	CS3 Qty	CS4 Qty
107	Steel Open Girder/Beam	93	92	0	1	0 Feet
515	Steel Protective Coating	1,068	1,067	0	1	0 Square Feet

Element Number	Defect Type	Defect Description	CS	CS Qty	Maint Qty
<input checked="" type="checkbox"/>	107	Corrosion			
		CORROSION WITH 1/8 INCH SECTION LOSS (5/8 INCH REMAINING) ON TOP 6 INCH OF WEB FOR 9 INCH LONG AT BENT 1	3	1	1 Feet
<input checked="" type="checkbox"/>	515	Effectiveness (Steel Protective Coatings)			
		SECTION LOSS PAINTED OVER, COATING HAS LIMITED EFFECTIVENESS, CORROSION NOT FULLY ARRESTED	3	1	1 Square Feet

General Comments

Span 2**Beam 5****Plate Girder**

Element Number	Element Name	Total Qty	CS1 Qty	CS2 Qty	CS3 Qty	CS4 Qty
107	Steel Open Girder/Beam	93	91	0	2	0 Feet
515	Steel Protective Coating	1,068	1,067	0	1	0 Square Feet

Element Number	Defect Type	Defect Description	CS	CS Qty	Maint Qty
<input checked="" type="checkbox"/> 107	Corrosion	3/16 INCH SECTION LOSS (9/16 INCH REMAINING) ON LOWER 10 INCH AND TOP 3 INCH OF WEB FOR 10 INCH LONG AT BENT 1. CORROSION HAS BEEN ARRESTED	3	1	1 Feet
<input checked="" type="checkbox"/> 107	Damage	BENT 1 BAY 5 DIAPHRAGM, SPALL, 10 INCH X 3 INCH X 1 INCH DEEP	3	1	Feet
<input checked="" type="checkbox"/> 515	Effectiveness (Steel Protective Coatings)	SECTION LOSS PAINTED OVER, COATING HAS LIMITED EFFECTIVENESS, CORROSION NOT FULLY ARRESTED	3	1	1 Square Feet

General Comments**Span 2****Beam 6****Plate Girder**

Element Number	Element Name	Total Qty	CS1 Qty	CS2 Qty	CS3 Qty	CS4 Qty
107	Steel Open Girder/Beam	93	91	0	2	0 Feet
515	Steel Protective Coating	1,068	1,067	0	1	0 Square Feet

Element Number	Defect Type	Defect Description	CS	CS Qty	Maint Qty
<input checked="" type="checkbox"/> 107	Corrosion	AT BENT 2, FULL HEIGHT OF WEB, PITTING UP TO 1/16 INCH DEEP WITH RUST STAINS	3	1	1 Feet
<input checked="" type="checkbox"/> 107	Corrosion	CORROSION WITH 1/8 INCH SECTION LOSS (5/8 INCH REMAINING) ON TOP 6 INCH AND BOTTOM 6 INCH OF WEB FOR 9 INCH LONG AT BENT 1	3	1	1 Feet
<input checked="" type="checkbox"/> 515	Effectiveness (Steel Protective Coatings)	SECTION LOSS PAINTED OVER, COATING HAS LIMITED EFFECTIVENESS, CORROSION NOT FULLY ARRESTED	3	1	1 Square Feet

General Comments**Span 2****Beam 7****Plate Girder**

Element Number	Element Name	Total Qty	CS1 Qty	CS2 Qty	CS3 Qty	CS4 Qty
107	Steel Open Girder/Beam	93	92	0	1	0 Feet
515	Steel Protective Coating	1,068	1,067	0	1	0 Square Feet

Element Number	Defect Type	Defect Description	CS	CS Qty	Maint Qty
<input checked="" type="checkbox"/> 107	Corrosion	CORROSION WITH 1/8 INCH SECTION LOSS (5/8 INCH REMAINING) ON TOP 3 INCH AND BOTTOM 6 INCH OF WEB FOR 9 INCH LONG AT BENT 1	3	1	1 Feet
<input checked="" type="checkbox"/> 515	Effectiveness (Steel Protective Coatings)	SECTION LOSS PAINTED OVER, COATING HAS LIMITED EFFECTIVENESS, CORROSION NOT FULLY ARRESTED	3	1	1 Square Feet

General Comments

Span 2 **Beam 9**
Plate Girder

Element Number	Element Name	Total Qty	CS1 Qty	CS2 Qty	CS3 Qty	CS4 Qty
107	Steel Open Girder/Beam	93	92	0	1	0 Feet
515	Steel Protective Coating	1,068	1,067	0	1	0 Square Feet

Element Number	Defect Type	Defect Description	CS	CS Qty	Maint Qty
<input checked="" type="checkbox"/> 107	Corrosion	CORROSION WITH 1/8 INCH SECTION LOSS (5/8 INCH REMAINING) ON TOP 1 INCH OF WEB FOR 9 INCH LONG AT BENT 3	3	1	1 Feet
<input checked="" type="checkbox"/> 515	Effectiveness (Steel Protective Coatings)	SECTION LOSS PAINTED OVER, COATING HAS LIMITED EFFECTIVENESS, CORROSION NOT FULLY ARRESTED	3	1	1 Square Feet

General Comments

Span 2 **Bent 1 Expansion Joint**
Standard Joint

Element Number	Element Name	Total Qty	CS1 Qty	CS2 Qty	CS3 Qty	CS4 Qty
301	Pourable Joint Seal	71	56	0	0	15 Feet

Element Number	Defect Type	Defect Description	CS	CS Qty	Maint Qty
<input checked="" type="checkbox"/> 301	Seal Adhesion	WESTBOUND LANES, SEPARATION OF JOINT MATERIAL OVER BENT 1, UP TO FULL DEPTH OF FILLER MATERIAL	4	15	15 Feet

General Comments

Span 2 **Left Bridge Rail**
Concrete and Metal Railing

Element Number	Element Name	Total Qty	CS1 Qty	CS2 Qty	CS3 Qty	CS4 Qty
333	Other Bridge Railing	93	0	85	8	0 Feet

Element Number	Defect Type	Defect Description	CS	CS Qty	Maint Qty
<input checked="" type="checkbox"/> 333	Cracking (RC and Other)	MAP CRACKING UP TO 1/16 INCH WIDE FOR UP TO FULL HEIGHT OF RAIL FOR 8 FEET LONG AT BENT 1	3	8	8 Feet
<input checked="" type="checkbox"/> 333	Cracking (RC and Other)	SCATTERED HAIRLINE VERTICAL CRACKING THROUGHOUT, UP TO FULL HEIGHT	2	85	Feet

General Comments

Span 2 **Right Bridge Rail**
Concrete and Metal Railing

Element Number	Element Name	Total Qty	CS1 Qty	CS2 Qty	CS3 Qty	CS4 Qty
333	Other Bridge Railing	93	0	93	0	0 Feet

Element Number	Defect Type	Defect Description	CS	CS Qty	Maint Qty
----------------	-------------	--------------------	----	--------	-----------

<input checked="" type="checkbox"/>	333	Cracking (RC and Other)	SCATTERED HAIRLINE VERTICAL CRACKING THROUGHOUT, UP TO FULL HEIGHT OF RAIL	2	93	Feet
-------------------------------------	------------	-------------------------	--	---	----	------

General Comments**Span 2 Near Bearing****Movable Bearing**

Element Number	Element Name	Total Qty	CS1 Qty	CS2 Qty	CS3 Qty	CS4 Qty
311	Movable Bearing	1	0	1	0	0 Each
515	Steel Protective Coating	1	0	1	0	0 Square Feet

Element Number	Defect Type	Defect Description	CS	CS Qty	Maint Qty	
<input checked="" type="checkbox"/>	311	Corrosion	FRECKLED RUST ON BEARING PLATES	2	1	Each
<input checked="" type="checkbox"/>	515	Effectiveness (Steel Protective Coatings)	COATING IS SUBSTANTIALLY EFFECTIVE, FRECKLED RUST PRESENT	2	1	1 Square Feet

General Comments**Span 2 Near Bearing****Movable Bearing**

Element Number	Element Name	Total Qty	CS1 Qty	CS2 Qty	CS3 Qty	CS4 Qty
311	Movable Bearing	1	0	1	0	0 Each
515	Steel Protective Coating	1	0	1	0	0 Square Feet

Element Number	Defect Type	Defect Description	CS	CS Qty	Maint Qty	
<input checked="" type="checkbox"/>	311	Corrosion	FRECKLED RUST ON BEARING PLATES	2	1	Each
<input checked="" type="checkbox"/>	515	Effectiveness (Steel Protective Coatings)	COATING IS SUBSTANTIALLY EFFECTIVE, FRECKLED RUST PRESENT	2	1	1 Square Feet

General Comments**Span 2 Near Bearing****Movable Bearing**

Element Number	Element Name	Total Qty	CS1 Qty	CS2 Qty	CS3 Qty	CS4 Qty
311	Movable Bearing	1	0	1	0	0 Each
515	Steel Protective Coating	1	0	1	0	0 Square Feet

Element Number	Defect Type	Defect Description	CS	CS Qty	Maint Qty	
<input checked="" type="checkbox"/>	311	Corrosion	FRECKLED RUST ON BEARING PLATES	2	1	Each
<input checked="" type="checkbox"/>	515	Effectiveness (Steel Protective Coatings)	COATING IS SUBSTANTIALLY EFFECTIVE, FRECKLED RUST PRESENT	2	1	1 Square Feet

General Comments

Span 2 Near Bearing
Movable Bearing

Element Number	Element Name	Total Qty	CS1 Qty	CS2 Qty	CS3 Qty	CS4 Qty	
311	Movable Bearing	1	0	1	0	0	Each
515	Steel Protective Coating	1	0	1	0	0	Square Feet

Element Number	Defect Type	Defect Description	CS	CS Qty	Maint Qty	
<input checked="" type="checkbox"/> 311	Corrosion	FRECKLED RUST ON BEARING PLATES	2	1		Each
<input checked="" type="checkbox"/> 515	Effectiveness (Steel Protective Coatings)	COATING IS SUBSTANTIALLY EFFECTIVE, FRECKLED RUST PRESENT	2	1	1	Square Feet

General Comments

Span 2 Near Bearing
Movable Bearing

Element Number	Element Name	Total Qty	CS1 Qty	CS2 Qty	CS3 Qty	CS4 Qty	
311	Movable Bearing	1	0	1	0	0	Each
515	Steel Protective Coating	1	0	1	0	0	Square Feet

Element Number	Defect Type	Defect Description	CS	CS Qty	Maint Qty	
<input checked="" type="checkbox"/> 311	Corrosion	FRECKLED RUST ON BEARING PLATES	2	1		Each
<input checked="" type="checkbox"/> 515	Effectiveness (Steel Protective Coatings)	COATING IS SUBSTANTIALLY EFFECTIVE, FRECKLED RUST PRESENT	2	1	1	Square Feet

General Comments

Span 2 Near Bearing
Movable Bearing

Element Number	Element Name	Total Qty	CS1 Qty	CS2 Qty	CS3 Qty	CS4 Qty	
311	Movable Bearing	1	0	1	0	0	Each
515	Steel Protective Coating	1	0	1	0	0	Square Feet

Element Number	Defect Type	Defect Description	CS	CS Qty	Maint Qty	
<input checked="" type="checkbox"/> 311	Corrosion	FRECKLED RUST ON BEARING PLATES	2	1		Each
<input checked="" type="checkbox"/> 515	Effectiveness (Steel Protective Coatings)	COATING IS SUBSTANTIALLY EFFECTIVE, FRECKLED RUST PRESENT	2	1	1	Square Feet

General Comments

Span 2 Near Bearing
Movable Bearing

Element Number	Element Name	Total Qty	CS1 Qty	CS2 Qty	CS3 Qty	CS4 Qty	
311	Movable Bearing	1	0	1	0	0	Each
515	Steel Protective Coating	1	0	1	0	0	Square Feet

Element Number	Defect Type	Defect Description	CS	CS Qty	Maint Qty	
<input checked="" type="checkbox"/> 311	Corrosion	FRECKLED RUST ON BEARING PLATES	2	1		Each

<input checked="" type="checkbox"/>	515	Effectiveness (Steel Protective Coatings)	COATING IS SUBSTANTIALLY EFFECTIVE, FRECKLED RUST PRESENT	2	1	1	Square Feet
-------------------------------------	------------	---	---	---	---	---	-------------

General Comments**Span 2 Near Bearing****Movable Bearing**

Element Number	Element Name	Total Qty	CS1 Qty	CS2 Qty	CS3 Qty	CS4 Qty	
311	Movable Bearing	1	0	1	0	0	Each
515	Steel Protective Coating	1	0	1	0	0	Square Feet

Element Number	Defect Type	Defect Description	CS	CS Qty	Maint Qty	
<input checked="" type="checkbox"/>	311	Corrosion	FRECKLED RUST ON BEARING PLATES	2	1	Each
<input checked="" type="checkbox"/>	515	Effectiveness (Steel Protective Coatings)	COATING IS SUBSTANTIALLY EFFECTIVE, FRECKLED RUST PRESENT	2	1	1 Square Feet

General Comments**Span 2 Near Bearing****Movable Bearing**

Element Number	Element Name	Total Qty	CS1 Qty	CS2 Qty	CS3 Qty	CS4 Qty	
311	Movable Bearing	1	0	1	0	0	Each
515	Steel Protective Coating	1	0	1	0	0	Square Feet

Element Number	Defect Type	Defect Description	CS	CS Qty	Maint Qty	
<input checked="" type="checkbox"/>	311	Corrosion	FRECKLED RUST ON BEARING PLATES	2	1	Each
<input checked="" type="checkbox"/>	515	Effectiveness (Steel Protective Coatings)	COATING IS SUBSTANTIALLY EFFECTIVE, FRECKLED RUST PRESENT	2	1	1 Square Feet

General Comments**Span 3 Deck****Reinforced Concrete Deck**

Element Number	Element Name	Total Qty	CS1 Qty	CS2 Qty	CS3 Qty	CS4 Qty	
12	Reinforced Concrete Deck	6,443	1,247	4,415	781	0	Square Feet

Element Number	Defect Type	Defect Description	CS	CS Qty	Maint Qty	
<input checked="" type="checkbox"/>	12	Delamination/Spall	4 FEET X 6 INCH X 5 INCH DEEP SPALL WITH EXPOSED REBAR IN UNDERSIDE OF BAY 6 OVER BENT 3, NO SECTION LOSS	3	4	4 Square Feet
<input checked="" type="checkbox"/>	12	Delamination/Spall	DELAMINATION 360 SQUARE FEET IN WESTBOUND SHOULDER AND 360 SQUARE FEET IN EASTBOUND SHOULDER	3	720	720 Square Feet
<input checked="" type="checkbox"/>	12	Delamination/Spall	UP TO 4 FEET X 1 FOOT X 5 INCH DEEP SPALL ON LEFT SHOULDER AT BENT 2 JOINT, REBAR COVERED BY PACKED DEBRIS	3	4	4 Square Feet
<input checked="" type="checkbox"/>	12	Exposed Rebar	PAR: 10 INCH DIAMETER X 1 INCH DEEP SPALL WITH EXPOSED REBAR, 5 PERCENT SECTION LOSS, IN UNDERSIDE BAY 3 AT 3 FEET PAST CENTER DIAPHRAGM	3	1	1 Square Feet

Structure Number: **400225**

Inspection Date: **10/04/2022**

<input checked="" type="checkbox"/>	12	Exposed Rebar	PAR: 2 FEET X 10 INCH X 5 INCH DEEP SPALL WITH EXPOSED REBAR, 5 PERCENT SECTION LOSS, IN UNDERSIDE OF BAY 5 OVER BENT 2	3	2	2	Square Feet
<input checked="" type="checkbox"/>	12	Patched Areas	LEFT SHOULDER, UP TO 50 SQUARE FEET OF UNSOUND PATCHED AREAS WITH CRACKS UP TO 1/16 INCH WIDE WITH EFFLORESCENCE	3	50	50	Square Feet
<input checked="" type="checkbox"/>	12	Cracking (RC and Other)	SCATTERED HAIRLINE MAP CRACKING IN LEFT AND RIGHT SHOULDERS FOR FULL WIDTH OF SHOULDER X FULL LENGTH OF SPAN	2	1,200		Square Feet
<input checked="" type="checkbox"/>	12	Cracking (RC and Other)	SCATTERED THROUGHOUT BOTH OVERHANGS, HAIRLINE TRANSVERSE CRACKS WITH EFFLORESCENCE	2	540	540	Square Feet
<input checked="" type="checkbox"/>	12	Cracking (RC and Other)	THROUGHOUT UNDERSIDE IN ALL BAYS, HAIRLINE CRACKS WITH EFFLORESCENCE	2	2,500	2,500	Square Feet
<input checked="" type="checkbox"/>	12	Patched Areas	IN BAYS 2 AND 3, SCATTERED FORMWORK LEFT IN PLACE	2	175		Square Feet

General Comments

Span 3 Bent 2 Expansion Joint Standard Joint

Element Number	Element Name	Total Qty	CS1 Qty	CS2 Qty	CS3 Qty	CS4 Qty
301	Pourable Joint Seal	71	65	0	0	6 Feet

Element Number	Defect Type	Defect Description	CS	CS Qty	Maint Qty
<input checked="" type="checkbox"/>	301	Debris Impaction			
		LEFT SHOULDER, JOINT IS COMPLETELY FILLED WITH VEGETATION GROWTH	4	6	6 Feet

General Comments

Span 3 Beam 1 Plate Girder

Element Number	Element Name	Total Qty	CS1 Qty	CS2 Qty	CS3 Qty	CS4 Qty
107	Steel Open Girder/Beam	93	90	0	3	0 Feet
515	Steel Protective Coating	1,058	1,057	0	1	0 Square Feet

Element Number	Defect Type	Defect Description	CS	CS Qty	Maint Qty
<input checked="" type="checkbox"/>	107	Corrosion			
		CORROSION WITH 1/16 INCH SECTION LOSS FULL HEIGHT OF WEB AT END OF BEAM	3	1	1 Feet
<input checked="" type="checkbox"/>	107	Damage			
		PAR: AT BENT 2 LEFT OVERHANG DIAPHRAGM, SPALL 2 FOOT WIDE X 8 INCH LONG X 2 INCH DEEP WITH EXPOSED REBAR, 5 PERCENT SECTION LOSS	3	2	Feet
<input checked="" type="checkbox"/>	515	Effectiveness (Steel Protective Coatings)			
		SECTION LOSS PAINTED OVER, COATING HAS LIMITED EFFECTIVENESS, CORROSION NOT FULLY ARRESTED	3	1	1 Square Feet

General Comments

Span 3**Beam 2****Plate Girder**

Element Number	Element Name	Total Qty	CS1 Qty	CS2 Qty	CS3 Qty	CS4 Qty
107	Steel Open Girder/Beam	93	91	1	1	0 Feet
515	Steel Protective Coating	1,058	1,057	0	0	1 Square Feet

Element Number	Defect Type	Defect Description	CS	CS Qty	Maint Qty
<input checked="" type="checkbox"/> 107	Corrosion	CORROSION WITH SECTION LOSS (0.99 INCH REMAINING) ON BOTH BOTTOM FLANGES FOR OUTER 2 INCH FOR 1 FOOT AT BENT 3	3	1	1 Feet
<input checked="" type="checkbox"/> 107	Corrosion	WELDED REPAIR TO BOTH SIDES OF BOTH BEARING STIFFENERS AT BENT 3, 9 INCH X 8 INCH X 3/8 INCH THICK STEEL PLATE	2	1	Feet
<input checked="" type="checkbox"/> 515	Effectiveness (Steel Protective Coatings)	COATING FAILING, CORROSION WITH SECTION LOSS AT BENT 3	4	1	1 Square Feet

General Comments**Span 3****Beam 3****Plate Girder**

Element Number	Element Name	Total Qty	CS1 Qty	CS2 Qty	CS3 Qty	CS4 Qty
107	Steel Open Girder/Beam	93	90	1	2	0 Feet
515	Steel Protective Coating	1,058	1,057	0	1	0 Square Feet

Element Number	Defect Type	Defect Description	CS	CS Qty	Maint Qty
<input checked="" type="checkbox"/> 107	Corrosion	CORROSION WITH 1/8 INCH SECTION LOSS (5/8 INCH REMAINING) ON LOWER 4 INCH OF WEB FOR 2 FEET LONG AT BENT 3	3	2	2 Feet
<input checked="" type="checkbox"/> 107	Corrosion	WELDED REPAIR TO BOTH SIDES OF BOTH BEARING STIFFENERS AT BENT 3, 9 INCH X 8 INCH X 3/8 INCH THICK STEEL PLATE	2	1	Feet
<input checked="" type="checkbox"/> 515	Effectiveness (Steel Protective Coatings)	SECTION LOSS PAINTED OVER, COATING HAS LIMITED EFFECTIVENESS, CORROSION NOT FULLY ARRESTED	3	1	1 Square Feet

General Comments**Span 3****Beam 4****Plate Girder**

Element Number	Element Name	Total Qty	CS1 Qty	CS2 Qty	CS3 Qty	CS4 Qty
107	Steel Open Girder/Beam	93	91	1	0	1 Feet
515	Steel Protective Coating	1,058	1,057	0	0	1 Square Feet

Element Number	Defect Type	Defect Description	CS	CS Qty	Maint Qty
<input checked="" type="checkbox"/> 107	Corrosion	PAR: CORROSION WITH 5/16 INCH SECTION LOSS (15/16 INCH REMAINING) ON LEFT BOTTOM FLANGE FOR OUTER 2 INCH FOR 9 INCH LONG STARTING 7 INCH FROM BENT 3	4	1	1 Feet
<input checked="" type="checkbox"/> 107	Corrosion	WELDED REPAIR TO BOTH SIDES OF BOTH BEARING STIFFENERS AT BENT 3, 9 INCH X 8 INCH X 3/8 INCH THICK STEEL PLATE	2	1	Feet

<input checked="" type="checkbox"/>	515	Effectiveness (Steel Protective Coatings)	COATING FAILING ON BOTTOM FLANGE NEAR BENT 3, CORROSION WITH SECTION LOSS PRESENT	4	1	1 Square Feet
-------------------------------------	------------	---	---	---	---	---------------

General Comments

Span 3 Beam 5 Plate Girder

Element Number	Element Name	Total Qty	CS1 Qty	CS2 Qty	CS3 Qty	CS4 Qty
107	Steel Open Girder/Beam	93	91	1	1	0 Feet
515	Steel Protective Coating	1,058	1,057	0	0	1 Square Feet

Element Number	Defect Type	Defect Description	CS	CS Qty	Maint Qty
<input checked="" type="checkbox"/>	107	Corrosion			
		CORROSION ARRESTED WITH PAINT, 1/2 INCH SECTION LOSS (3/4 INCH REMAINING) ON BOTH BOTTOM FLANGES FOR OUTER 2 INCH FOR 1 FOOT STARTING AT BENT 3	3	1	1 Feet
<input checked="" type="checkbox"/>	107	Corrosion			
		AT BENT 2, TOP 6 INCHES OF WEB HAS A REPAIR PLATE, 6 INCH X 6 INCH X 1/2 INCH THICK WITH RUST SCALE	2	1	Feet
<input checked="" type="checkbox"/>	107	Corrosion			
		WELDED REPAIR TO BOTH SIDES OF BOTH BEARING STIFFENERS AT BENT 3, 9 INCH X 8 INCH X 3/8 INCH THICK STEEL PLATE	2		Feet
<input checked="" type="checkbox"/>	515	Effectiveness (Steel Protective Coatings)			
		COATING FAILING ON BOTTOM FLANGE AT BENT 3, CORROSION WITH SECTION LOSS PRESENT	4	1	1 Square Feet

General Comments

Span 3 Beam 6 Plate Girder

Element Number	Element Name	Total Qty	CS1 Qty	CS2 Qty	CS3 Qty	CS4 Qty
107	Steel Open Girder/Beam	93	90	0	3	0 Feet
515	Steel Protective Coating	1,058	1,056	0	2	0 Square Feet

Element Number	Defect Type	Defect Description	CS	CS Qty	Maint Qty
<input checked="" type="checkbox"/>	107	Corrosion			
		CORROSION WITH 1/16 INCH PITTING (11/16 INCH REMAINING) ON FULL HEIGHT OF WEB AT BENT 2	3	1	1 Feet
<input checked="" type="checkbox"/>	107	Corrosion			
		CORROSION WITH 1/4 INCH SECTION LOSS (1 INCH REMAINING) ON BOTTOM FLANGES FOR OUTER 2 INCH FOR 6 INCH LONG AT BENT 3	3	1	1 Feet
<input checked="" type="checkbox"/>	107	Corrosion			
		WELDED PLATE REPAIR TO BOTH SIDES OF LEFT BEARING STIFFENER AT BENT 3, 5 INCH HIGH X 4 INCH WIDE X 3/8 INCH THICK WITH RUST SCALE	3	1	1 Feet
<input checked="" type="checkbox"/>	515	Effectiveness (Steel Protective Coatings)			
		SECTION LOSS PAINTED OVER, COATING HAS LIMITED EFFECTIVENESS, CORROSION NOT FULLY ARRESTED	3	2	2 Square Feet

General Comments

Span 3**Beam 7****Plate Girder**

Element Number	Element Name	Total Qty	CS1 Qty	CS2 Qty	CS3 Qty	CS4 Qty
107	Steel Open Girder/Beam	93	91	0	2	0 Feet
515	Steel Protective Coating	1,058	1,056	0	2	0 Square Feet

Element Number	Defect Type	Defect Description	CS	CS Qty	Maint Qty
<input checked="" type="checkbox"/> 107	Corrosion	CORROSION WITH 1/8 INCH SECTION LOSS (5/8 INCH REMAINING) ON LOWER 6 INCH OF WEB FOR 20 INCH LONG AT BENT 3 AND 1/4 INCH SECTION LOSS (1 INCH REMAINING) ON BOTTOM FLANGES FOR OUTER 2 INCH FOR 1 FOOT STARTING 8 INCH FROM BENT 3	3	2	2 Feet
<input checked="" type="checkbox"/> 515	Effectiveness (Steel Protective Coatings)	SECTION LOSS PAINTED OVER, COATING HAS LIMITED EFFECTIVENESS, CORROSION NOT FULLY ARRESTED	3	2	2 Square Feet

General Comments**Span 3****Beam 8****Plate Girder**

Element Number	Element Name	Total Qty	CS1 Qty	CS2 Qty	CS3 Qty	CS4 Qty
107	Steel Open Girder/Beam	93	91	0	2	0 Feet
515	Steel Protective Coating	1,058	1,056	0	2	0 Square Feet

Element Number	Defect Type	Defect Description	CS	CS Qty	Maint Qty
<input checked="" type="checkbox"/> 107	Corrosion	CORROSION WITH 1/16 INCH SECTION LOSS (5/8 INCH REMAINING) ON LOWER 3 INCH OF WEB AND 1/16 INCH SECTION LOSS (1 3/16 INCH REMAINING) ON BOTTOM FLANGES FOR OUTER 2 INCH FOR 2 FEET LONG AT BENT 3	3	2	2 Feet
<input checked="" type="checkbox"/> 515	Effectiveness (Steel Protective Coatings)	SECTION LOSS PAINTED OVER, COATING HAS LIMITED EFFECTIVENESS, CORROSION NOT FULLY ARRESTED	3	2	2 Square Feet

General Comments**Span 3****Beam 9****Plate Girder**

Element Number	Element Name	Total Qty	CS1 Qty	CS2 Qty	CS3 Qty	CS4 Qty
107	Steel Open Girder/Beam	93	92	0	1	0 Feet
515	Steel Protective Coating	1,058	1,057	0	1	0 Square Feet

Element Number	Defect Type	Defect Description	CS	CS Qty	Maint Qty
<input checked="" type="checkbox"/> 107	Corrosion	CORROSION WITH 1/8 INCH SECTION LOSS (5/8 INCH REMAINING) ON TOP 1 INCH OF WEB FOR 9 INCH LONG AT BENT 3	3	1	1 Feet
<input checked="" type="checkbox"/> 515	Effectiveness (Steel Protective Coatings)	SECTION LOSS PAINTED OVER, COATING HAS LIMITED EFFECTIVENESS, CORROSION NOT FULLY ARRESTED	3	1	1 Square Feet

General Comments

Span 3 Far Bearing
Fixed Bearing

Element Number	Element Name	Total Qty	CS1 Qty	CS2 Qty	CS3 Qty	CS4 Qty	
313	Fixed Bearing	1	0	1	0	0	Each
515	Steel Protective Coating	1	0	0	1	0	Square Feet

Element Number	Defect Type	Defect Description	CS	CS Qty	Maint Qty	
<input checked="" type="checkbox"/> 313	Corrosion	SURFACE CORROSION ON BEARING PLATES	2	1		Each
<input checked="" type="checkbox"/> 515	Effectiveness (Steel Protective Coatings)	PROTECTIVE COATING INEFFECTIVE, SURFACE CORROSION PRESENT	3	1	1	Square Feet

General Comments

Span 3 Far Bearing
Fixed Bearing

Element Number	Element Name	Total Qty	CS1 Qty	CS2 Qty	CS3 Qty	CS4 Qty	
313	Fixed Bearing	1	0	1	0	0	Each
515	Steel Protective Coating	1	0	0	1	0	Square Feet

Element Number	Defect Type	Defect Description	CS	CS Qty	Maint Qty	
<input checked="" type="checkbox"/> 313	Corrosion	SURFACE CORROSION ON BEARING PLATES	2	1		Each
<input checked="" type="checkbox"/> 515	Effectiveness (Steel Protective Coatings)	PROTECTIVE COATING INEFFECTIVE, SURFACE CORROSION PRESENT	3	1	1	Square Feet

General Comments

Span 3 Far Bearing
Fixed Bearing

Element Number	Element Name	Total Qty	CS1 Qty	CS2 Qty	CS3 Qty	CS4 Qty	
313	Fixed Bearing	1	0	1	0	0	Each
515	Steel Protective Coating	1	0	0	1	0	Square Feet

Element Number	Defect Type	Defect Description	CS	CS Qty	Maint Qty	
<input checked="" type="checkbox"/> 313	Corrosion	SURFACE CORROSION ON BEARING PLATES	2	1		Each
<input checked="" type="checkbox"/> 515	Effectiveness (Steel Protective Coatings)	PROTECTIVE COATING INEFFECTIVE, SURFACE CORROSION PRESENT	3	1	1	Square Feet

General Comments

Span 3 Far Bearing
Fixed Bearing

Element Number	Element Name	Total Qty	CS1 Qty	CS2 Qty	CS3 Qty	CS4 Qty	
313	Fixed Bearing	1	0	1	0	0	Each
515	Steel Protective Coating	1	0	0	1	0	Square Feet

Element Number	Defect Type	Defect Description	CS	CS Qty	Maint Qty	
----------------	-------------	--------------------	----	--------	-----------	--

Structure Number: **400225**

Inspection Date: **10/04/2022**

<input checked="" type="checkbox"/>	313	Corrosion	SURFACE CORROSION ON BEARING PLATES	2	1	Each
<input checked="" type="checkbox"/>	515	Effectiveness (Steel Protective Coatings)	PROTECTIVE COATING INEFFECTIVE, SURFACE CORROSION PRESENT	3	1	1 Square Feet

General Comments

Span 3 Near Bearing

Movable Bearing

Element Number	Element Name	Total Qty	CS1 Qty	CS2 Qty	CS3 Qty	CS4 Qty
311	Movable Bearing	1	0	1	0	0 Each
515	Steel Protective Coating	1	0	1	0	0 Square Feet

Element Number	Defect Type	Defect Description	CS	CS Qty	Maint Qty	
<input checked="" type="checkbox"/>	311	Corrosion	FRECKLED RUST ON BEARING PLATES	2	1	Each
<input checked="" type="checkbox"/>	515	Effectiveness (Steel Protective Coatings)	COATING IS SUBSTANTIALLY EFFECTIVE, FRECKLED RUST PRESENT	2	1	1 Square Feet

General Comments

Span 3 Far Bearing

Fixed Bearing

Element Number	Element Name	Total Qty	CS1 Qty	CS2 Qty	CS3 Qty	CS4 Qty
313	Fixed Bearing	1	0	1	0	0 Each
515	Steel Protective Coating	1	0	0	1	0 Square Feet

Element Number	Defect Type	Defect Description	CS	CS Qty	Maint Qty	
<input checked="" type="checkbox"/>	313	Corrosion	SURFACE CORROSION ON BEARING PLATES	2	1	Each
<input checked="" type="checkbox"/>	515	Effectiveness (Steel Protective Coatings)	PROTECTIVE COATING INEFFECTIVE, SURFACE CORROSION PRESENT	3	1	1 Square Feet

General Comments

Span 3 Near Bearing

Movable Bearing

Element Number	Element Name	Total Qty	CS1 Qty	CS2 Qty	CS3 Qty	CS4 Qty
311	Movable Bearing	1	0	1	0	0 Each
515	Steel Protective Coating	1	0	0	1	0 Square Feet

Element Number	Defect Type	Defect Description	CS	CS Qty	Maint Qty	
<input checked="" type="checkbox"/>	311	Corrosion	SURFACE CORROSION ON BEARING PLATES	2	1	Each
<input checked="" type="checkbox"/>	515	Effectiveness (Steel Protective Coatings)	PROTECTIVE COATING INEFFECTIVE, SURFACE CORROSION PRESENT	3	1	1 Square Feet

General Comments

Span 3 Far Bearing
Fixed Bearing

Element Number	Element Name	Total Qty	CS1 Qty	CS2 Qty	CS3 Qty	CS4 Qty	
313	Fixed Bearing	1	0	1	0	0	Each
515	Steel Protective Coating	1	0	0	1	0	Square Feet

Element Number	Defect Type	Defect Description	CS	CS Qty	Maint Qty	
<input checked="" type="checkbox"/> 313	Corrosion	SURFACE CORROSION ON BEARING PLATES	2	1		Each
<input checked="" type="checkbox"/> 515	Effectiveness (Steel Protective Coatings)	PROTECTIVE COATING INEFFECTIVE, SURFACE CORROSION PRESENT	3	1	1	Square Feet

General Comments

Span 3 Near Bearing
Movable Bearing

Element Number	Element Name	Total Qty	CS1 Qty	CS2 Qty	CS3 Qty	CS4 Qty	
311	Movable Bearing	1	0	1	0	0	Each
515	Steel Protective Coating	1	0	0	1	0	Square Feet

Element Number	Defect Type	Defect Description	CS	CS Qty	Maint Qty	
<input checked="" type="checkbox"/> 311	Corrosion	SURFACE CORROSION ON BEARING PLATES	2	1		Each
<input checked="" type="checkbox"/> 515	Effectiveness (Steel Protective Coatings)	PROTECTIVE COATING INEFFECTIVE, SURFACE CORROSION PRESENT	3	1	1	Square Feet

General Comments

Span 3 Far Bearing
Fixed Bearing

Element Number	Element Name	Total Qty	CS1 Qty	CS2 Qty	CS3 Qty	CS4 Qty	
313	Fixed Bearing	1	0	1	0	0	Each
515	Steel Protective Coating	1	0	0	1	0	Square Feet

Element Number	Defect Type	Defect Description	CS	CS Qty	Maint Qty	
<input checked="" type="checkbox"/> 313	Corrosion	SURFACE CORROSION ON BEARING PLATES	2	1		Each
<input checked="" type="checkbox"/> 515	Effectiveness (Steel Protective Coatings)	PROTECTIVE COATING INEFFECTIVE, SURFACE CORROSION PRESENT	3	1	1	Square Feet

General Comments

Span 3 Near Bearing
Movable Bearing

Element Number	Element Name	Total Qty	CS1 Qty	CS2 Qty	CS3 Qty	CS4 Qty	
311	Movable Bearing	1	0	1	0	0	Each
515	Steel Protective Coating	1	0	0	1	0	Square Feet

Element Number	Defect Type	Defect Description	CS	CS Qty	Maint Qty	
<input checked="" type="checkbox"/> 311	Corrosion	SURFACE CORROSION ON BEARING PLATES	2	1		Each

<input checked="" type="checkbox"/>	515	Effectiveness (Steel Protective Coatings)	PROTECTIVE COATING INEFFECTIVE, SURFACE CORROSION PRESENT	3	1	1 Square Feet
-------------------------------------	------------	---	---	---	---	---------------

General Comments**Span 3 Far Bearing****Fixed Bearing**

Element Number	Element Name	Total Qty	CS1 Qty	CS2 Qty	CS3 Qty	CS4 Qty
313	Fixed Bearing	1	0	1	0	0 Each
515	Steel Protective Coating	1	0	0	1	0 Square Feet

Element Number	Defect Type	Defect Description	CS	CS Qty	Maint Qty
<input checked="" type="checkbox"/>	313	Corrosion			Each
		SURFACE CORROSION ON BEARING PLATES	2	1	
<input checked="" type="checkbox"/>	515	Effectiveness (Steel Protective Coatings)			1 Square Feet
		PROTECTIVE COATING INEFFECTIVE, SURFACE CORROSION PRESENT	3	1	

General Comments**Span 3 Near Bearing****Movable Bearing**

Element Number	Element Name	Total Qty	CS1 Qty	CS2 Qty	CS3 Qty	CS4 Qty
311	Movable Bearing	1	0	1	0	0 Each
515	Steel Protective Coating	1	0	0	1	0 Square Feet

Element Number	Defect Type	Defect Description	CS	CS Qty	Maint Qty
<input checked="" type="checkbox"/>	311	Corrosion			Each
		SURFACE CORROSION ON BEARING PLATES	2	1	
<input checked="" type="checkbox"/>	515	Effectiveness (Steel Protective Coatings)			1 Square Feet
		PROTECTIVE COATING INEFFECTIVE, SURFACE CORROSION PRESENT	3	1	

General Comments**Span 3 Far Bearing****Fixed Bearing**

Element Number	Element Name	Total Qty	CS1 Qty	CS2 Qty	CS3 Qty	CS4 Qty
313	Fixed Bearing	1	0	1	0	0 Each
515	Steel Protective Coating	1	0	0	1	0 Square Feet

Element Number	Defect Type	Defect Description	CS	CS Qty	Maint Qty
<input checked="" type="checkbox"/>	313	Corrosion			Each
		SURFACE CORROSION ON BEARING PLATES	2	1	
<input checked="" type="checkbox"/>	515	Effectiveness (Steel Protective Coatings)			1 Square Feet
		PROTECTIVE COATING INEFFECTIVE, SURFACE CORROSION PRESENT	3	1	

General Comments

Span 3 Wearing Surface**Concrete Wearing Surface**

Element Number	Element Name	Total Qty	CS1 Qty	CS2 Qty	CS3 Qty	CS4 Qty
510	Wearing Surface	4,648	4,620	0	28	0 Square Feet

Element Number	Defect Type	Defect Description	CS	CS Qty	Maint Qty
<input checked="" type="checkbox"/> 510	Crack (Wearing Surface)	SCATTERED TRANSVERSE CRACKING UP TO 1/16 INCH WIDE FOR 50 PERCENT OF PAVED JOINT LENGTH AT BENT 2	3	24	24 Square Feet
<input checked="" type="checkbox"/> 510	Patched Area/Pothole (Wearing Surface)	WESTBOUND LANE, 10 FEET FROM BENT 2, 2 POTHOLES UP TO 2 FOOT DIAMETER WITH ADJACENT CRACKS UP TO 1/16 INCH WIDE	3	4	4 Square Feet

General Comments**Span 3 Left Bridge Rail****Concrete and Metal Railing**

Element Number	Element Name	Total Qty	CS1 Qty	CS2 Qty	CS3 Qty	CS4 Qty
333	Other Bridge Railing	92	0	92	0	0 Feet

Element Number	Defect Type	Defect Description	CS	CS Qty	Maint Qty
<input checked="" type="checkbox"/> 333	Cracking (RC and Other)	SCATTERED HAIRLINE VERTICAL CRACKING THROUGHOUT, UP TO FULL HEIGHT	2	92	Feet

General Comments**Span 3 Right Bridge Rail****Concrete and Metal Railing**

Element Number	Element Name	Total Qty	CS1 Qty	CS2 Qty	CS3 Qty	CS4 Qty
333	Other Bridge Railing	92	0	92	0	0 Feet

Element Number	Defect Type	Defect Description	CS	CS Qty	Maint Qty
<input checked="" type="checkbox"/> 333	Cracking (RC and Other)	SCATTERED HAIRLINE VERTICAL CRACKING THROUGHOUT, UP TO FULL HEIGHT	2	92	Feet

General Comments**Span 4 Deck****Reinforced Concrete Deck**

Element Number	Element Name	Total Qty	CS1 Qty	CS2 Qty	CS3 Qty	CS4 Qty
12	Reinforced Concrete Deck	2,500	0	2,385	115	0 Square Feet

Element Number	Defect Type	Defect Description	CS	CS Qty	Maint Qty
<input checked="" type="checkbox"/> 12	Cracking (RC and Other)	8 FEET TRANSVERSE CRACK UP TO 1/16 INCH WIDE IN FAR RIGHT EASTBOUND TRAVEL LANE NEAR END BENT 2	3	20	20 Square Feet
<input checked="" type="checkbox"/> 12	Delamination/Spall	26 FEET X 3 FEET DELAMINATION AT CENTERLINE AND WESTBOUND LANES AT END BENT 2 WITH (2) SPALLS UP TO 2 FEET X 9 INCH X 1 1/2 INCH DEEP, NO EXPOSED REINFORCEMENT	3	82	82 Square Feet

Structure Number: **400225**

Inspection Date: **10/04/2022**

<input checked="" type="checkbox"/>	12	Delamination/Spall	BENT 3 LEFT OVERHANG SOFFIT, 8 INCH DIAMETER DELAMINATION	3	1	1	Square Feet
<input checked="" type="checkbox"/>	12	Delamination/Spall	EASTBOUND LANE AT END BENT 2, SPALL, 18 INCH WIDE X 8 INCH LONG X UP TO 1 INCH DEEP	3	2	2	Square Feet
<input checked="" type="checkbox"/>	12	Patched Areas	NEAR CENTERLINE OF ROAD IN EASTBOUND LANE, UNSOUND ASPHALT PATCH, 5 FEET WIDE X 2 FEET LONG WITH AREAS OF SPALLS UP TO 2 INCH DEEP	3	10	10	Square Feet
<input checked="" type="checkbox"/>	12	Cracking (RC and Other)	SCATTERED HAIRLINE MAP CRACKING THROUGHOUT DECK UNDERSIDE	2	1,700	1,700	Square Feet
<input checked="" type="checkbox"/>	12	Cracking (RC and Other)	SCATTERED HAIRLINE MAP CRACKING THROUGHOUT EXPOSED TOPSIDE	2	685	685	Square Feet

General Comments

Span 4 Beam 3 Plate Girder

Element Number	Element Name	Total Qty	CS1 Qty	CS2 Qty	CS3 Qty	CS4 Qty
107	Steel Open Girder/Beam	36	32	1	3	0 Feet
515	Steel Protective Coating	292	289	0	0	3 Square Feet

Element Number	Defect Type	Defect Description	CS	CS Qty	Maint Qty
<input checked="" type="checkbox"/>	107	Corrosion			
		CORROSION ARRESTED WITH PAINT, 3/16 INCH SECTION LOSS (9/16 INCH REMAINING) ON BOTH BOTTOM FLANGES FOR OUTER 2 INCH FOR 3 FEET STARTING 1.5 FEET FROM BENT 3 WITH 1/8 INCH SECTION LOSS (7/16 INCH REMAINING) ON LOWER 4 INCH OF WEB IN SAME AREA	3	3	3 Feet
<input checked="" type="checkbox"/>	107	Corrosion			
		AT BENT 3, LEFT BEARING STIFFENER HAS WELDED REPAIR PLATE, 5 INCH X 5 INCH X 1/2 INCH THICK WITH RUST SCALE	2	1	Feet
<input checked="" type="checkbox"/>	515	Effectiveness (Steel Protective Coatings)			
		PROTECTIVE COATING FAILING, CORROSION WITH SECTION LOSS PRESENT	4	3	3 Square Feet

General Comments

Span 4 Beam 4 Plate Girder

Element Number	Element Name	Total Qty	CS1 Qty	CS2 Qty	CS3 Qty	CS4 Qty
107	Steel Open Girder/Beam	36	34	0	2	0 Feet
515	Steel Protective Coating	292	290	0	0	2 Square Feet

Element Number	Defect Type	Defect Description	CS	CS Qty	Maint Qty
<input checked="" type="checkbox"/>	107	Corrosion			
		CORROSION HAS BEEN ARRESTED WITH PAINT, 3/4 INCH SECTION LOSS (1/2 INCH REMAINING) ON BOTTOM LEFT FLANGE FOR OUTER 2 INCH FOR 18 INCH LONG STARTING 8 INCH FROM BENT 3	3	2	2 Feet
<input checked="" type="checkbox"/>	515	Effectiveness (Steel Protective Coatings)			
		PROTECTIVE COATING FAILING AT BENT 3, CORROSION WITH SECTION LOSS PRESENT	4	2	2 Square Feet

General Comments

Span 4

Beam 5

Plate Girder

Element Number	Element Name	Total Qty	CS1 Qty	CS2 Qty	CS3 Qty	CS4 Qty
107	Steel Open Girder/Beam	36	33	0	3	0 Feet
515	Steel Protective Coating	292	291	0	1	0 Square Feet

Element Number	Defect Type	Defect Description	CS	CS Qty	Maint Qty
<input checked="" type="checkbox"/> 107	Corrosion	CORROSION WITH 1/8 INCH SECTION LOSS (5/8 INCH REMAINING) ON BOTTOM FLANGES FOR OUTER 2 INCH FOR 2 FEET LONG AT BENT 3	3	2	2 Feet
<input checked="" type="checkbox"/> 107	Corrosion	WELDED STEEL PLATE REPAIR AT END OF BEAM BEHIND BEARING STIFFENER AT BENT 3, 6 INCH LONG X FULL HEIGHT WITH RUST SCALE	3	1	Feet
<input checked="" type="checkbox"/> 515	Effectiveness (Steel Protective Coatings)	SECTION LOSS PAINTED OVER, COATING HAS LIMITED EFFECTIVENESS, CORROSION NOT FULLY ARRESTED	3	1	1 Square Feet

General Comments

Span 4

Beam 6

Plate Girder

Element Number	Element Name	Total Qty	CS1 Qty	CS2 Qty	CS3 Qty	CS4 Qty
107	Steel Open Girder/Beam	36	34	1	1	0 Feet
515	Steel Protective Coating	292	291	0	0	1 Square Feet

Element Number	Defect Type	Defect Description	CS	CS Qty	Maint Qty
<input checked="" type="checkbox"/> 107	Corrosion	CORROSION HAS BEEN ARRESTED WITH PAINT, 3/16 INCH SECTION LOSS (9/16 INCH REMAINING) ON TOP 6 INCH OF WEB FOR 10 INCH LONG AT BENT 3	3	1	1 Feet
<input checked="" type="checkbox"/> 107	Corrosion	WELDED PLATE REPAIR TO BOTH SIDES OF LEFT BEARING STIFFENER AT BENT 3, 5 INCH HIGH X 4 INCH WIDE X 3/8 INCH THICK	2	1	Feet
<input checked="" type="checkbox"/> 515	Effectiveness (Steel Protective Coatings)	PROTECTIVE COATING FAILING AT BENT 3, CORROSION WITH SECTION LOSS PRESENT	4	1	1 Square Feet

General Comments

Span 4

Beam 7

Plate Girder

Element Number	Element Name	Total Qty	CS1 Qty	CS2 Qty	CS3 Qty	CS4 Qty
107	Steel Open Girder/Beam	36	34	0	2	0 Feet
515	Steel Protective Coating	292	290	0	2	0 Square Feet

Element Number	Defect Type	Defect Description	CS	CS Qty	Maint Qty
<input checked="" type="checkbox"/> 107	Corrosion	CORROSION WITH 1/8 INCH SECTION LOSS (5/8 INCH REMAINING) ON BOTTOM FLANGES FOR OUTER 2 INCH FOR 15 INCH LONG STARTING 8 INCH FROM BENT 3 AND 1/8 INCH SECTION LOSS (7/16 INCH REMAINING) ON TOP 8 INCH OF WEB FOR 10 INCH LONG AT BENT 3	3	2	2 Feet

<input checked="" type="checkbox"/>	515	Effectiveness (Steel Protective Coatings)	SECTION LOSS PAINTED OVER, COATING HAS LIMITED EFFECTIVENESS, CORROSION NOT FULLY ARRESTED	3	2	2	Square Feet
-------------------------------------	------------	---	--	---	---	---	-------------

General Comments

Span 4 Beam 8 Plate Girder

Element Number	Element Name	Total Qty	CS1 Qty	CS2 Qty	CS3 Qty	CS4 Qty	
107	Steel Open Girder/Beam	36	34	2	0	0	Feet
515	Steel Protective Coating	292	290	0	2	0	Square Feet

Element Number	Defect Type	Defect Description	CS	CS Qty	Maint Qty	
<input checked="" type="checkbox"/>	107	Corrosion				Feet
		CORROSION WITH 1/16 INCH SECTION LOSS (11/16 INCH REMAINING) ON BOTTOM FLANGES FOR OUTER 1 INCH FOR 2 FEET STARTING AT BENT 3 AND 1/16 INCH SECTION LOSS (1/2 INCH REMAINING) ON LOWER 3 INCH AND TOP 5 INCH OF WEB FOR 10 INCH AT BENT 3	2	2		
<input checked="" type="checkbox"/>	515	Effectiveness (Steel Protective Coatings)				2 Square Feet
		SECTION LOSS PAINTED OVER, COATING HAS LIMITED EFFECTIVENESS, CORROSION NOT FULLY ARRESTED	3	2		

General Comments

Span 4 Bent 3 Expansion Joint Standard Joint

Element Number	Element Name	Total Qty	CS1 Qty	CS2 Qty	CS3 Qty	CS4 Qty	
301	Pourable Joint Seal	71	55	0	16	0	Feet

Element Number	Defect Type	Defect Description	CS	CS Qty	Maint Qty	
<input checked="" type="checkbox"/>	301	Seal Adhesion				Feet
		LOSS OF SEAL ADHESION ALONG EXPOSED JOINT IN SHOULDERS	3	16		

General Comments

Span 4 Wearing Surface Concrete Wearing Surface

Element Number	Element Name	Total Qty	CS1 Qty	CS2 Qty	CS3 Qty	CS4 Qty	
510	Wearing Surface	1,804	1,749	0	55	0	Square Feet

Element Number	Defect Type	Defect Description	CS	CS Qty	Maint Qty	
<input checked="" type="checkbox"/>	510	Crack (Wearing Surface)				55 Square Feet
		TRANSVERSE CRACK UP TO 1/4 INCHES WIDE AT BENT 3 JOINT	3	55		

General Comments

Span 4 Left Bridge Rail**Concrete Railing**

Element Number	Element Name	Total Qty	CS1 Qty	CS2 Qty	CS3 Qty	CS4 Qty
331	Reinforced Concrete Bridge Railing	36	0	36	0	0 Feet

Element Number	Defect Type	Defect Description	CS	CS Qty	Maint Qty
<input checked="" type="checkbox"/> 331	Cracking (RC and Other)	SCATTERED HAIRLINE VERTICAL CRACKING THROUGHOUT, UP TO FULL HEIGHT	2	36	Feet

General Comments

Span 4 Near Bearing**Movable Bearing**

Element Number	Element Name	Total Qty	CS1 Qty	CS2 Qty	CS3 Qty	CS4 Qty
311	Movable Bearing	1	0	1	0	0 Each
515	Steel Protective Coating	1	0	0	1	0 Square Feet

Element Number	Defect Type	Defect Description	CS	CS Qty	Maint Qty
<input checked="" type="checkbox"/> 311	Corrosion	SURFACE CORROSION ON BEARING PLATES	2	1	Each
<input checked="" type="checkbox"/> 515	Effectiveness (Steel Protective Coatings)	PROTECTIVE COATING INEFFECTIVE, SURFACE CORROSION PRESENT	3	1	1 Square Feet

General Comments

Span 4 Far Bearing**Fixed Bearing**

Element Number	Element Name	Total Qty	CS1 Qty	CS2 Qty	CS3 Qty	CS4 Qty
313	Fixed Bearing	1	0	0	1	0 Each
515	Steel Protective Coating	1	0	0	1	0 Square Feet

Element Number	Defect Type	Defect Description	CS	CS Qty	Maint Qty
<input checked="" type="checkbox"/> 313	Corrosion	CORROSION WITH PACK RUST, NO SECTION LOSS	3	1	1 Each
<input checked="" type="checkbox"/> 515	Effectiveness (Steel Protective Coatings)	PROTECTIVE COATING INEFFECTIVE, SURFACE CORROSION PRESENT	3	1	1 Square Feet

General Comments

Span 4 Near Bearing**Movable Bearing**

Element Number	Element Name	Total Qty	CS1 Qty	CS2 Qty	CS3 Qty	CS4 Qty
311	Movable Bearing	1	0	1	0	0 Each
515	Steel Protective Coating	1	0	0	1	0 Square Feet

Element Number	Defect Type	Defect Description	CS	CS Qty	Maint Qty
<input checked="" type="checkbox"/> 311	Corrosion	SURFACE CORROSION ON BEARING PLATES	2	1	Each
<input checked="" type="checkbox"/> 515	Effectiveness (Steel Protective Coatings)	PROTECTIVE COATING INEFFECTIVE, SURFACE CORROSION PRESENT	3	1	1 Square Feet

General Comments

Span 4 Far Bearing
Fixed Bearing

Element Number	Element Name	Total Qty	CS1 Qty	CS2 Qty	CS3 Qty	CS4 Qty
313	Fixed Bearing	1	0	0	1	0 Each
515	Steel Protective Coating	1	0	0	0	1 Square Feet

Element Number	Defect Type	Defect Description	CS	CS Qty	Maint Qty
<input checked="" type="checkbox"/> 313	Corrosion	CORROSION WITH PACK RUST, NO SECTION LOSS	3	1	1 Each
<input checked="" type="checkbox"/> 515	Effectiveness (Steel Protective Coatings)	COATING FAILING, PACK RUST PRESENT	4	1	1 Square Feet

General Comments

Span 4 Near Bearing
Movable Bearing

Element Number	Element Name	Total Qty	CS1 Qty	CS2 Qty	CS3 Qty	CS4 Qty
311	Movable Bearing	1	0	1	0	0 Each
515	Steel Protective Coating	1	0	0	1	0 Square Feet

Element Number	Defect Type	Defect Description	CS	CS Qty	Maint Qty
<input checked="" type="checkbox"/> 311	Corrosion	SURFACE CORROSION ON BEARING PLATES	2	1	Each
<input checked="" type="checkbox"/> 515	Effectiveness (Steel Protective Coatings)	PROTECTIVE COATING INEFFECTIVE, SURFACE CORROSION PRESENT	3	1	1 Square Feet

General Comments

Span 4 Far Bearing
Fixed Bearing

Element Number	Element Name	Total Qty	CS1 Qty	CS2 Qty	CS3 Qty	CS4 Qty
313	Fixed Bearing	1	0	0	1	0 Each
515	Steel Protective Coating	1	0	0	0	1 Square Feet

Element Number	Defect Type	Defect Description	CS	CS Qty	Maint Qty
<input checked="" type="checkbox"/> 313	Corrosion	CORROSION WITH PACK RUST, NO SECTION LOSS	3	1	1 Each
<input checked="" type="checkbox"/> 515	Effectiveness (Steel Protective Coatings)	COATING FAILING, PACK RUST PRESENT	4	1	1 Square Feet

General Comments

Span 4 Near Bearing
Movable Bearing

Element Number	Element Name	Total Qty	CS1 Qty	CS2 Qty	CS3 Qty	CS4 Qty
311	Movable Bearing	1	0	1	0	0 Each
515	Steel Protective Coating	1	0	0	1	0 Square Feet

Element Number	Defect Type	Defect Description	CS	CS Qty	Maint Qty
----------------	-------------	--------------------	----	--------	-----------

Structure Number: **400225**Inspection Date: **10/04/2022**

<input checked="" type="checkbox"/>	311	Corrosion	SURFACE CORROSION ON BEARING PLATES	2	1	Each
<input checked="" type="checkbox"/>	515	Effectiveness (Steel Protective Coatings)	PROTECTIVE COATING INEFFECTIVE, SURFACE CORROSION PRESENT	3	1	1 Square Feet

General Comments**Span 4 Near Bearing****Movable Bearing**

Element Number	Element Name	Total Qty	CS1 Qty	CS2 Qty	CS3 Qty	CS4 Qty
311	Movable Bearing	1	0	1	0	0 Each
515	Steel Protective Coating	1	0	0	1	0 Square Feet

Element Number	Defect Type	Defect Description	CS	CS Qty	Maint Qty
<input checked="" type="checkbox"/>	311 Corrosion	SURFACE CORROSION ON BEARING PLATES	2	1	Each
<input checked="" type="checkbox"/>	515 Effectiveness (Steel Protective Coatings)	PROTECTIVE COATING INEFFECTIVE, SURFACE CORROSION PRESENT	3	1	1 Square Feet

General Comments**Span 4 Near Bearing****Movable Bearing**

Element Number	Element Name	Total Qty	CS1 Qty	CS2 Qty	CS3 Qty	CS4 Qty
311	Movable Bearing	1	0	1	0	0 Each
515	Steel Protective Coating	1	0	0	1	0 Square Feet

Element Number	Defect Type	Defect Description	CS	CS Qty	Maint Qty
<input checked="" type="checkbox"/>	311 Corrosion	SURFACE CORROSION ON BEARING PLATES	2	1	Each
<input checked="" type="checkbox"/>	515 Effectiveness (Steel Protective Coatings)	PROTECTIVE COATING INEFFECTIVE, SURFACE CORROSION PRESENT	3	1	1 Square Feet

General Comments**Span 4 Near Bearing****Movable Bearing**

Element Number	Element Name	Total Qty	CS1 Qty	CS2 Qty	CS3 Qty	CS4 Qty
311	Movable Bearing	1	0	1	0	0 Each
515	Steel Protective Coating	1	0	0	1	0 Square Feet

Element Number	Defect Type	Defect Description	CS	CS Qty	Maint Qty
<input checked="" type="checkbox"/>	311 Corrosion	SURFACE CORROSION ON BEARING PLATES	2	1	Each
<input checked="" type="checkbox"/>	515 Effectiveness (Steel Protective Coatings)	PROTECTIVE COATING INEFFECTIVE, SURFACE CORROSION PRESENT	3	1	1 Square Feet

General Comments

Span 4**Far Bearing****Fixed Bearing**

Element Number	Element Name	Total Qty	CS1 Qty	CS2 Qty	CS3 Qty	CS4 Qty
313	Fixed Bearing	1	0	0	1	0 Each
515	Steel Protective Coating	1	0	0	0	1 Square Feet

Element Number	Defect Type	Defect Description	CS	CS Qty	Maint Qty
<input checked="" type="checkbox"/> 313	Corrosion	CORROSION WITH PACK RUST, NO SECTION LOSS	3	1	1 Each
<input checked="" type="checkbox"/> 515	Effectiveness (Steel Protective Coatings)	COATING FAILING, PACK RUST PRESENT	4	1	1 Square Feet

General Comments**Span 4****Near Bearing****Movable Bearing**

Element Number	Element Name	Total Qty	CS1 Qty	CS2 Qty	CS3 Qty	CS4 Qty
311	Movable Bearing	1	0	1	0	0 Each
515	Steel Protective Coating	1	0	0	1	0 Square Feet

Element Number	Defect Type	Defect Description	CS	CS Qty	Maint Qty
<input checked="" type="checkbox"/> 311	Corrosion	SURFACE CORROSION ON BEARING PLATES	2	1	Each
<input checked="" type="checkbox"/> 515	Effectiveness (Steel Protective Coatings)	PROTECTIVE COATING INEFFECTIVE, SURFACE CORROSION PRESENT	3	1	1 Square Feet

General Comments**Span 4****Far Bearing****Fixed Bearing**

Element Number	Element Name	Total Qty	CS1 Qty	CS2 Qty	CS3 Qty	CS4 Qty
313	Fixed Bearing	1	0	0	1	0 Each
515	Steel Protective Coating	1	0	0	0	1 Square Feet

Element Number	Defect Type	Defect Description	CS	CS Qty	Maint Qty
<input checked="" type="checkbox"/> 313	Corrosion	CORROSION WITH PACK RUST, NO SECTION LOSS	3	1	1 Each
<input checked="" type="checkbox"/> 515	Effectiveness (Steel Protective Coatings)	COATING FAILING PACK RUST PRESENT	4	1	1 Square Feet

General Comments**Span 4****Near Bearing****Movable Bearing**

Element Number	Element Name	Total Qty	CS1 Qty	CS2 Qty	CS3 Qty	CS4 Qty
311	Movable Bearing	1	0	1	0	0 Each
515	Steel Protective Coating	1	0	0	1	0 Square Feet

Element Number	Defect Type	Defect Description	CS	CS Qty	Maint Qty
<input checked="" type="checkbox"/> 311	Corrosion	SURFACE CORROSION ON BEARING PLATES	2	1	Each

<input checked="" type="checkbox"/>	515	Effectiveness (Steel Protective Coatings)	PROTECTIVE COATING INEFFECTIVE, SURFACE CORROSION PRESENT	3	1	1 Square Feet
-------------------------------------	------------	---	---	---	---	---------------

General Comments

Span 4 Right Bridge Rail

Concrete Railing

Element Number	Element Name	Total Qty	CS1 Qty	CS2 Qty	CS3 Qty	CS4 Qty
331	Reinforced Concrete Bridge Railing	36	0	36	0	0 Feet

Element Number	Defect Type	Defect Description	CS	CS Qty	Maint Qty	
<input checked="" type="checkbox"/>	331	Cracking (RC and Other)	SCATTERED HAIRLINE VERTICAL CRACKING THROUGHOUT, UP TO FULL HEIGHT	2	36	Feet

General Comments

End Bent 1 Cap 1

Reinforced Concrete Pier Cap

Element Number	Element Name	Total Qty	CS1 Qty	CS2 Qty	CS3 Qty	CS4 Qty
234	Reinforced Concrete Pier Cap	81	61	20	0	0 Feet

Element Number	Defect Type	Defect Description	CS	CS Qty	Maint Qty	
<input checked="" type="checkbox"/>	234	Cracking (RC and Other)	SCATTERED VERTICAL HAIRLINE CRACKS UP TO 1 FOOT HIGH ALONG FACE OF END BENT CAP	2	7	Feet
<input checked="" type="checkbox"/>	234	Patched Area	PATCHED AREA UNDER GIRDER 1, 3 FEET LONG WITH WOOD FORM LEFT IN PLACE	2	3	Feet
<input checked="" type="checkbox"/>	234	Patched Area	SOUND PATCHED AREA UNDER BAY 2 AND GIRDER 2, 10 FEET LONG X FULL HEIGHT OF CAP	2	10	Feet

General Comments

Bent 1 Pile 1

Reinforced Concrete Column

Element Number	Element Name	Total Qty	CS1 Qty	CS2 Qty	CS3 Qty	CS4 Qty
205	Reinforced Concrete Column	1	0	0	1	0 Each

Element Number	Defect Type	Defect Description	CS	CS Qty	Maint Qty	
<input checked="" type="checkbox"/>	205	Patched Area	15 FEET OF SEALED CRACK, SOME WITH RUST STAINING	3	1	15 Each

General Comments

Bent 1 Pile 2

Reinforced Concrete Column

Element Number	Element Name	Total Qty	CS1 Qty	CS2 Qty	CS3 Qty	CS4 Qty
205	Reinforced Concrete Column	1	0	0	1	0 Each

Element Number	Defect Type	Defect Description	CS	CS Qty	Maint Qty	
<input checked="" type="checkbox"/>	205	Cracking (RC and Other)	1/4 INCH VERTICAL CRACKING UP TO 8 FEET HIGH	3	1	8 Each

<input checked="" type="checkbox"/>	205	Delamination/Spall	STARTING AT BOTTOM OF PILE ON EAST FACE, DELAMINATION 4 FOOT HIGH X 1 FOOT WIDE	3	4	Each
-------------------------------------	------------	--------------------	--	---	---	------

General Comments**Bent 1 Pile 3****Reinforced Concrete Column**

Element Number	Element Name	Total Qty	CS1 Qty	CS2 Qty	CS3 Qty	CS4 Qty
205	Reinforced Concrete Column	1	0	0	1	0 Each

Element Number	Defect Type	Defect Description	CS	CS Qty	Maint Qty	
<input checked="" type="checkbox"/>	205	Cracking (RC and Other)	8 FEET OF CRACKING UP TO 1/4 INCH WIDE (2 CRACKS TOTAL)	3	1	8 Each

General Comments**Bent 1 Pile 4****Reinforced Concrete Column**

Element Number	Element Name	Total Qty	CS1 Qty	CS2 Qty	CS3 Qty	CS4 Qty
205	Reinforced Concrete Column	1	0	0	1	0 Each

Element Number	Defect Type	Defect Description	CS	CS Qty	Maint Qty	
<input checked="" type="checkbox"/>	205	Cracking (RC and Other)	8 FEET OF CRACKING UP TO 1/16 INCH WIDE	3	1	8 Each

General Comments**Bent 1 Cap 1****Reinforced Concrete Pier Cap**

Element Number	Element Name	Total Qty	CS1 Qty	CS2 Qty	CS3 Qty	CS4 Qty
234	Reinforced Concrete Pier Cap	71	0	62	9	0 Feet

Element Number	Defect Type	Defect Description	CS	CS Qty	Maint Qty	
<input checked="" type="checkbox"/>	234	Cracking (RC and Other)	1/4 INCH DIAGONAL CRACK ON PEDESTAL UNDER GIRDER 7 SPAN 1	3	1	1 Feet
<input checked="" type="checkbox"/>	234	Delamination/Spall	14 INCH X 3 INCH X 1 INCH DEEP SPALL ON PEDESTAL UNDER GIRDER 4 SPAN 1 WITH NO LOSS OF BEARING AT EAST END OF BEAM, NO EXPOSED REINFORCEMENT	3	2	2 Feet
<input checked="" type="checkbox"/>	234	Delamination/Spall	EAST FACE, BELOW GIRDER 7, DELAMINATED AREA UP TO 6 FEET LONG X 2 FEET HIGH WITH HAIRLINE CRACKS AND RUST STAINING	3	6	6 Feet
<input checked="" type="checkbox"/>	234	Cracking (RC and Other)	SCATTERED HAIRLINE MAP CRACKING THROUGHOUT FULL LENGTH OF CAP, UP TO FULL HEIGHT	2	60	Feet
<input checked="" type="checkbox"/>	234	Patched Area	14 INCH X 3 INCH SOUND PATCH ON PEDESTAL UNDER GIRDER 4 SPAN 1	2		Feet
<input checked="" type="checkbox"/>	234	Patched Area	PATCHED PREVIOUS PRIORITY MAINTENANCE UNDER GIRDER 5 SPAN 1	2	1	Feet
<input checked="" type="checkbox"/>	234	Patched Area	PATCHED PREVIOUS PRIORITY MAINTENANCE UNDER GIRDER 6 SPAN 1	2		Feet
<input checked="" type="checkbox"/>	234	Patched Area	SOUND PATCH 1/16 INCH WIDE CRACKING ON NORTH FACE	2	1	Feet

General Comments

End Bent 1**Abutment****Reinforced Concrete Abutment**

Element Number	Element Name	Total Qty	CS1 Qty	CS2 Qty	CS3 Qty	CS4 Qty
215	Reinforced Concrete Abutment	70	0	70	0	0 Feet

Element Number	Defect Type	Defect Description	CS	CS Qty	Maint Qty
<input checked="" type="checkbox"/> 215	Cracking (RC and Other)	HAIRLINE MAP CRACKING THROUGHOUT FULL LENGTH OF BACKWALL	2	70	Feet
General Comments					

Bent 2**Cap 1****Reinforced Concrete Pier Cap**

Element Number	Element Name	Total Qty	CS1 Qty	CS2 Qty	CS3 Qty	CS4 Qty
234	Reinforced Concrete Pier Cap	71	0	12	59	0 Feet

Element Number	Defect Type	Defect Description	CS	CS Qty	Maint Qty
<input checked="" type="checkbox"/> 234	Cracking (RC and Other)	1/16 INCH VERTICAL AND HORIZONTAL CRACKING THROUGHOUT EAST AND WEST FACES AND UNDERSIDE	3	46	71 Feet
<input checked="" type="checkbox"/> 234	Cracking (RC and Other)	FULL WIDTH X FULL HEIGHT AREA OF MAP CRACKING ON NORTH END OF CAP UP TO 1/4 INCH WIDE WITH EFFLORESCENCE BUILDUP AND RUST STAINING	3	1	1 Feet
<input checked="" type="checkbox"/> 234	Delamination/Spall	(5) DELAMINATIONS UP TO 1 FOOT DIAMETER SCATTERED THROUGHOUT EAST FACE	3	5	5 Feet
<input checked="" type="checkbox"/> 234	Delamination/Spall	DELAMINATION ON EAST FACE OF CAP ABOVE COLUMN 1, 2 FEET WIDE X FULL HEIGHT	3	2	2 Feet
<input checked="" type="checkbox"/> 234	Delamination/Spall	WEST FACE BELOW GIRDER 5 AT BOTTOM OF CAP, DELAMINATION 2 FOOT LONG X 6 INCH HIGH	3		2 Feet
<input checked="" type="checkbox"/> 234	Patched Area	PATCHED PREVIOUS PRIORITY MAINTENANCE ON WEST FACE UNDER GIRDER 5 WITH DELAMINATED AREAS UP TO 2 FOOT DIAMETER	3	5	2 Feet
<input checked="" type="checkbox"/> 234	Exposed Rebar	4 INCH LENGTH OF EXPOSED REINFORCEMENT IN TOP OF EAST FACE OF CAP BELOW BEAM 1, NO SECTION LOSS	2		Feet
<input checked="" type="checkbox"/> 234	Exposed Rebar	ALONG CAP SOFFIT, 12 FEET OF EXPOSED REBAR CHAIRS	2	12	12 Feet
General Comments					

Bent 2**Pile 1****Reinforced Concrete Column**

Element Number	Element Name	Total Qty	CS1 Qty	CS2 Qty	CS3 Qty	CS4 Qty
205	Reinforced Concrete Column	1	0	0	1	0 Each

Element Number	Defect Type	Defect Description	CS	CS Qty	Maint Qty
<input checked="" type="checkbox"/> 205	Patched Area	FULL HEIGHT PATCHED AREAS ON WEST FACE WITH RUST STAINS	3	1	10 Each
General Comments					

Bent 2 Pile 2**Reinforced Concrete Column**

Element Number	Element Name	Total Qty	CS1 Qty	CS2 Qty	CS3 Qty	CS4 Qty
205	Reinforced Concrete Column	1	0	1	0	0 Each

Element Number	Defect Type	Defect Description	CS	CS Qty	Maint Qty
<input checked="" type="checkbox"/> 205	Patched Area	SOUND PATCHED AREAS ON EAST AND WEST FACES, 4 FEET HIGH AT BASE OF COLUMN	2	1	Each

General Comments**Bent 2 Pile 3****Reinforced Concrete Column**

Element Number	Element Name	Total Qty	CS1 Qty	CS2 Qty	CS3 Qty	CS4 Qty
205	Reinforced Concrete Column	1	0	0	1	0 Each

Element Number	Defect Type	Defect Description	CS	CS Qty	Maint Qty
<input checked="" type="checkbox"/> 205	Delamination/Spall	SOUTHEAST FACE STARTING AT GROUND LINE, 6 FOOT HIGH X 2 FOOT WIDE DELAMINATION WITH CRACK UP TO 1/8 INCH WIDE	3		6 Each
<input checked="" type="checkbox"/> 205	Patched Area	PATCHED AREAS WITH HAIRLINE CRACKS ON WEST FACE AND SOUTH FACE, 4 FEET WIDE X 7 FEET HIGH	3	1	Each
<input checked="" type="checkbox"/> 205	Scour	20 INCH X 24 INCH X 10 INCH DEEP HOLE AT BASE OF PILE 3 ON WEST FACE	2		Each

General Comments**Bent 2 Pile 4****Reinforced Concrete Column**

Element Number	Element Name	Total Qty	CS1 Qty	CS2 Qty	CS3 Qty	CS4 Qty
205	Reinforced Concrete Column	1	0	1	0	0 Each

Element Number	Defect Type	Defect Description	CS	CS Qty	Maint Qty
<input checked="" type="checkbox"/> 205	Patched Area	(3) SOUND PATCHED AREAS ON WEST FACE, UP TO 10 FEET HIGH BEGINNING AT TOP OF COLUMN	2	1	Each

General Comments**End Bent 2 Cap 1****Reinforced Concrete Pier Cap**

Element Number	Element Name	Total Qty	CS1 Qty	CS2 Qty	CS3 Qty	CS4 Qty
234	Reinforced Concrete Pier Cap	79	38	17	24	0 Feet

Element Number	Defect Type	Defect Description	CS	CS Qty	Maint Qty
<input checked="" type="checkbox"/> 234	Cracking (RC and Other)	10 FEET HORIZONTAL CRACK UP TO 1/8 INCH WIDE IN FACE OF CAP BELOW BAY 2	3	10	10 Feet
<input checked="" type="checkbox"/> 234	Delamination/Spall	1 FOOT DIAMETER DELAMINATION IN CAP BELOW BEAM 8	3	1	1 Feet

Structure Number: **400225**Inspection Date: **10/04/2022**

<input checked="" type="checkbox"/>	234	Delamination/Spall	6 FEET LONG X 8 INCH HIGH DELAMINATION WITH RUST STAINING IN FACE OF CAP BELOW BAY 1 AND BAY 3 WITH 12 INCH X 3 INCH X 1/2 INCH DEEP SPALL BELOW BAY 3, NO EXPOSED REINFORCEMENT	3	12	12	Feet
<input checked="" type="checkbox"/>	234	Delamination/Spall	BEAM 2 BEARING SEAT IS DELAMINATED FOR 1 FOOT LONG	3	1	1	Feet
<input checked="" type="checkbox"/>	234	Cracking (RC and Other)	(3) HORIZONTAL HAIRLINE CRACKS WITH EFFLORESCENCE SCATTERED THROUGHOUT CAP, UP TO 4 FEET	2	9		Feet
<input checked="" type="checkbox"/>	234	Cracking (RC and Other)	SCATTERED VERTICAL HAIRLINE CRACKS UP TO FULL HEIGHT OF CAP	2	8		Feet

General Comments**End Bent 2****Abutment****Reinforced Concrete Abutment**

Element Number	Element Name	Total Qty	CS1 Qty	CS2 Qty	CS3 Qty	CS4 Qty
215	Reinforced Concrete Abutment	70	42	28	0	0 Feet

Element Number	Defect Type	Defect Description	CS	CS Qty	Maint Qty
<input checked="" type="checkbox"/>	215	Cracking (RC and Other)			
		FULL LENGTH HORIZONTAL HAIRLINE CRACK IN BAY 5 BACKWALL	2	9	Feet
<input checked="" type="checkbox"/>	215	Cracking (RC and Other)			
		HAIRLINE MAP CRACKING IN BACKWALL OUTSIDE OF GIRDER 1, 2 FEET X 2 FEET	2	2	Feet
<input checked="" type="checkbox"/>	215	Cracking (RC and Other)			
		SCATTERED HAIRLINE MAP CRACKING IN BACKWALL OF BAY 3 AND BAY 4, FULL WIDTH X UP TO 2 FEET HIGH	2	17	Feet

General Comments**Bent 3****Cap 1****Reinforced Concrete Pier Cap**

Element Number	Element Name	Total Qty	CS1 Qty	CS2 Qty	CS3 Qty	CS4 Qty
234	Reinforced Concrete Pier Cap	70	0	12	58	0 Feet

Element Number	Defect Type	Defect Description	CS	CS Qty	Maint Qty
<input checked="" type="checkbox"/>	234	Cracking (RC and Other)			
		MAP CRACKING UP TO 1/16 INCH WIDE THROUGHOUT	3	53	70 Feet
<input checked="" type="checkbox"/>	234	Cracking (RC and Other)			
		MAP CRACKING UP TO 1/4 INCH WIDE WITH EFFLORESCENCE AND RUST STAINING IN EAST FACE OF CAP ABOVE COLUMN 1, 2 FEET WIDE X 3.5 FEET HIGH	3	2	2 Feet
<input checked="" type="checkbox"/>	234	Delamination/Spall			
		18 INCH X 6 INCH X 5 INCH SPALL ON PEDESTAL UNDER END OF SPAN 4 GIRDER 4, NO EXPOSED REBAR, NO BEARING LOSS	3	2	2 Feet
<input checked="" type="checkbox"/>	234	Delamination/Spall			
		PAR: 6 INCH X 4 INCH X 5 INCH SPALL ON PEDESTAL UNDER GIRDER 5 SPAN 4 WITH 1 INCH X 1 1/2 INCH UNDER BEARING, NO EXPOSED REINFORCEMENT	3	1	1 Feet
<input checked="" type="checkbox"/>	234	Exposed Rebar			
		ALONG SOFFIT, 9 FEET OF EXPOSED REBAR CHAIRS	2	9	9 Feet
<input checked="" type="checkbox"/>	234	Patched Area			
		SOUND PATCHED AREA ON WEST FACE UNDER GIRDER 7	2	2	Feet
<input checked="" type="checkbox"/>	234	Patched Area			
		SOUND PATCHED SPALL ON EAST FACE UNDER GIRDER 4	2	1	Feet

General Comments**Bent 3 Pile 1****Reinforced Concrete Column**

Element Number	Element Name	Total Qty	CS1 Qty	CS2 Qty	CS3 Qty	CS4 Qty
205	Reinforced Concrete Column	1	0	0	1	0 Each

Element Number	Defect Type	Defect Description	CS	CS Qty	Maint Qty
<input checked="" type="checkbox"/> 205	Cracking (RC and Other)	FULL HEIGHT 1/8 INCH WIDE VERTICAL CRACK	3	1	10 Each

General Comments**Bent 3 Pile 2****Reinforced Concrete Column**

Element Number	Element Name	Total Qty	CS1 Qty	CS2 Qty	CS3 Qty	CS4 Qty
205	Reinforced Concrete Column	1	0	0	1	0 Each

Element Number	Defect Type	Defect Description	CS	CS Qty	Maint Qty
<input checked="" type="checkbox"/> 205	Cracking (RC and Other)	(3) VERTICAL CRACKS UP TO FULL HEIGHT X 1/8 INCH WIDE	3	1	30 Each

General Comments**Bent 3 Pile 3****Reinforced Concrete Column**

Element Number	Element Name	Total Qty	CS1 Qty	CS2 Qty	CS3 Qty	CS4 Qty
205	Reinforced Concrete Column	1	0	0	1	0 Each

Element Number	Defect Type	Defect Description	CS	CS Qty	Maint Qty
<input checked="" type="checkbox"/> 205	Cracking (RC and Other)	(4) SCATTERED VERTICAL CRACKS UP TO 11 FEET X 1/4 INCH WIDE	3	1	11 Each
<input checked="" type="checkbox"/> 205	Patched Area	PATCHED AREA, WEST FACE, 2 FEET WIDE X FULL HEIGHT WITH AREA OF DELAMINATION 4 FEET ABOVE GROUND, 16 INCH IN DIAMETER	3		Each

General Comments**Bent 3 Pile 4****Reinforced Concrete Column**

Element Number	Element Name	Total Qty	CS1 Qty	CS2 Qty	CS3 Qty	CS4 Qty
205	Reinforced Concrete Column	1	0	0	1	0 Each

Element Number	Defect Type	Defect Description	CS	CS Qty	Maint Qty
<input checked="" type="checkbox"/> 205	Cracking (RC and Other)	(3) VERTICAL CRACKS UP TO FULL HEIGHT X 1/8 INCH WIDE	3	1	30 Each

General Comments

Elements Verified

Location	Name	Component	Element Name	Amount
Span 1	Deck	Reinforced Concrete Deck	Reinforced Concrete Deck	2372
Span 1	Beam 1	Plate Girder	Steel Open Girder/Beam	277
Span 1	Beam 2	Plate Girder	Steel Open Girder/Beam	277
Span 1	Beam 3	Plate Girder	Steel Open Girder/Beam	277
Span 1	Beam 4	Plate Girder	Steel Open Girder/Beam	277
Span 1	Beam 5	Plate Girder	Steel Open Girder/Beam	277
Span 1	Beam 6	Plate Girder	Steel Open Girder/Beam	277
Span 1	Beam 7	Plate Girder	Steel Open Girder/Beam	277
Span 1	Beam 8	Plate Girder	Steel Open Girder/Beam	277
Span 1	Beam 9	Plate Girder	Steel Open Girder/Beam	277
Span 1	Left Bridge Rail	Concrete and Metal Railing	Other Bridge Railing	34
Span 1	Right Bridge Rail	Concrete and Metal Railing	Other Bridge Railing	34
Span 1	Near Bearing	Fixed Bearing	Fixed Bearing	1
Span 1	Far Bearing	Movable Bearing	Movable Bearing	1
Span 1	Far Bearing	Movable Bearing	Movable Bearing	1
Span 1	Near Bearing	Fixed Bearing	Fixed Bearing	1
Span 1	Near Bearing	Fixed Bearing	Fixed Bearing	1
Span 1	Far Bearing	Movable Bearing	Movable Bearing	1
Span 1	Far Bearing	Movable Bearing	Movable Bearing	1
Span 1	Near Bearing	Fixed Bearing	Fixed Bearing	1
Span 1	Near Bearing	Fixed Bearing	Fixed Bearing	1
Span 1	Far Bearing	Movable Bearing	Movable Bearing	1
Span 1	Far Bearing	Movable Bearing	Movable Bearing	1
Span 1	Near Bearing	Fixed Bearing	Fixed Bearing	1
Span 1	Near Bearing	Fixed Bearing	Fixed Bearing	1
Span 1	Far Bearing	Movable Bearing	Movable Bearing	1
Span 1	Far Bearing	Movable Bearing	Movable Bearing	1
Span 1	Near Bearing	Fixed Bearing	Fixed Bearing	1
Span 1	Near Bearing	Fixed Bearing	Fixed Bearing	1
Span 1	Far Bearing	Movable Bearing	Movable Bearing	1
Span 2	Deck	Reinforced Concrete Deck	Reinforced Concrete Deck	6503
Span 2	Beam 1	Plate Girder	Steel Open Girder/Beam	93
Span 2	Beam 2	Plate Girder	Steel Open Girder/Beam	93
Span 2	Beam 3	Plate Girder	Steel Open Girder/Beam	93
Span 2	Beam 4	Plate Girder	Steel Open Girder/Beam	93
Span 2	Beam 5	Plate Girder	Steel Open Girder/Beam	93
Span 2	Beam 6	Plate Girder	Steel Open Girder/Beam	93
Span 2	Beam 7	Plate Girder	Steel Open Girder/Beam	93
Span 2	Beam 8	Plate Girder	Steel Open Girder/Beam	93
Span 2	Beam 9	Plate Girder	Steel Open Girder/Beam	93
Span 2	Left Bridge Rail	Concrete and Metal Railing	Other Bridge Railing	93
Span 2	Right Bridge Rail	Concrete and Metal Railing	Other Bridge Railing	93
Span 2	Bent 1 Expansion Joint	Standard Joint	Pourable Joint Seal	71
Span 2	Wearing Surface	Concrete Wearing Surface	Wearing Surface	4691
Span 2	Near Bearing	Movable Bearing	Movable Bearing	1

Elements Verified

Location	Name	Component	Element Name	Amount
Span 2	Far Bearing	Fixed Bearing	Fixed Bearing	1
Span 2	Far Bearing	Fixed Bearing	Fixed Bearing	1
Span 2	Near Bearing	Movable Bearing	Movable Bearing	1
Span 2	Near Bearing	Movable Bearing	Movable Bearing	1
Span 2	Far Bearing	Fixed Bearing	Fixed Bearing	1
Span 2	Far Bearing	Fixed Bearing	Fixed Bearing	1
Span 2	Near Bearing	Movable Bearing	Movable Bearing	1
Span 2	Near Bearing	Movable Bearing	Movable Bearing	1
Span 2	Far Bearing	Fixed Bearing	Fixed Bearing	1
Span 2	Far Bearing	Fixed Bearing	Fixed Bearing	1
Span 2	Near Bearing	Movable Bearing	Movable Bearing	1
Span 2	Near Bearing	Movable Bearing	Movable Bearing	1
Span 2	Far Bearing	Fixed Bearing	Fixed Bearing	1
Span 2	Far Bearing	Fixed Bearing	Fixed Bearing	1
Span 2	Near Bearing	Movable Bearing	Movable Bearing	1
Span 2	Near Bearing	Movable Bearing	Movable Bearing	1
Span 2	Far Bearing	Fixed Bearing	Fixed Bearing	1
Span 3	Deck	Reinforced Concrete Deck	Reinforced Concrete Deck	6443
Span 3	Beam 1	Plate Girder	Steel Open Girder/Beam	93
Span 3	Beam 2	Plate Girder	Steel Open Girder/Beam	93
Span 3	Beam 3	Plate Girder	Steel Open Girder/Beam	93
Span 3	Beam 4	Plate Girder	Steel Open Girder/Beam	93
Span 3	Beam 5	Plate Girder	Steel Open Girder/Beam	93
Span 3	Beam 6	Plate Girder	Steel Open Girder/Beam	93
Span 3	Beam 7	Plate Girder	Steel Open Girder/Beam	93
Span 3	Beam 8	Plate Girder	Steel Open Girder/Beam	93
Span 3	Beam 9	Plate Girder	Steel Open Girder/Beam	93
Span 3	Left Bridge Rail	Concrete and Metal Railing	Other Bridge Railing	92
Span 3	Right Bridge Rail	Concrete and Metal Railing	Other Bridge Railing	92
Span 3	Bent 2 Expansion Joint	Standard Joint	Pourable Joint Seal	71
Span 3	Wearing Surface	Concrete Wearing Surface	Wearing Surface	4648
Span 3	Near Bearing	Movable Bearing	Movable Bearing	1
Span 3	Far Bearing	Fixed Bearing	Fixed Bearing	1
Span 3	Far Bearing	Fixed Bearing	Fixed Bearing	1
Span 3	Near Bearing	Movable Bearing	Movable Bearing	1
Span 3	Near Bearing	Movable Bearing	Movable Bearing	1
Span 3	Far Bearing	Fixed Bearing	Fixed Bearing	1
Span 3	Far Bearing	Fixed Bearing	Fixed Bearing	1
Span 3	Near Bearing	Movable Bearing	Movable Bearing	1
Span 3	Near Bearing	Movable Bearing	Movable Bearing	1
Span 3	Far Bearing	Fixed Bearing	Fixed Bearing	1
Span 3	Far Bearing	Fixed Bearing	Fixed Bearing	1
Span 3	Near Bearing	Movable Bearing	Movable Bearing	1
Span 3	Near Bearing	Movable Bearing	Movable Bearing	1
Span 3	Far Bearing	Fixed Bearing	Fixed Bearing	1
Span 3	Far Bearing	Fixed Bearing	Fixed Bearing	1
Span 3	Near Bearing	Movable Bearing	Movable Bearing	1
Span 3	Near Bearing	Movable Bearing	Movable Bearing	1
Span 3	Far Bearing	Fixed Bearing	Fixed Bearing	1

Elements Verified

Location	Name	Component	Element Name	Amount
Span 3	Far Bearing	Fixed Bearing	Fixed Bearing	1
Span 3	Near Bearing	Movable Bearing	Movable Bearing	1
Span 3	Near Bearing	Movable Bearing	Movable Bearing	1
Span 3	Far Bearing	Fixed Bearing	Fixed Bearing	1
Span 4	Deck	Reinforced Concrete Deck	Reinforced Concrete Deck	2500
Span 4	Beam 1	Plate Girder	Steel Open Girder/Beam	36
Span 4	Beam 2	Plate Girder	Steel Open Girder/Beam	36
Span 4	Beam 3	Plate Girder	Steel Open Girder/Beam	36
Span 4	Beam 4	Plate Girder	Steel Open Girder/Beam	36
Span 4	Beam 5	Plate Girder	Steel Open Girder/Beam	36
Span 4	Beam 6	Plate Girder	Steel Open Girder/Beam	36
Span 4	Beam 7	Plate Girder	Steel Open Girder/Beam	36
Span 4	Beam 8	Plate Girder	Steel Open Girder/Beam	36
Span 4	Beam 9	Plate Girder	Steel Open Girder/Beam	36
Span 4	Left Bridge Rail	Concrete Railing	Reinforced Concrete Bridge Railing	36
Span 4	Right Bridge Rail	Concrete Railing	Reinforced Concrete Bridge Railing	36
Span 4	Bent 3 Expansion Joint	Standard Joint	Pourable Joint Seal	71
Span 4	Wearing Surface	Concrete Wearing Surface	Wearing Surface	1804
Span 4	Near Bearing	Movable Bearing	Movable Bearing	1
Span 4	Far Bearing	Fixed Bearing	Fixed Bearing	1
Span 4	Far Bearing	Fixed Bearing	Fixed Bearing	1
Span 4	Near Bearing	Movable Bearing	Movable Bearing	1
Span 4	Near Bearing	Movable Bearing	Movable Bearing	1
Span 4	Far Bearing	Fixed Bearing	Fixed Bearing	1
Span 4	Far Bearing	Fixed Bearing	Fixed Bearing	1
Span 4	Near Bearing	Movable Bearing	Movable Bearing	1
Span 4	Near Bearing	Movable Bearing	Movable Bearing	1
Span 4	Far Bearing	Fixed Bearing	Fixed Bearing	1
Span 4	Far Bearing	Fixed Bearing	Fixed Bearing	1
Span 4	Near Bearing	Movable Bearing	Movable Bearing	1
Span 4	Near Bearing	Movable Bearing	Movable Bearing	1
Span 4	Far Bearing	Fixed Bearing	Fixed Bearing	1
Span 4	Far Bearing	Fixed Bearing	Fixed Bearing	1
Span 4	Near Bearing	Movable Bearing	Movable Bearing	1
Span 4	Near Bearing	Movable Bearing	Movable Bearing	1
Span 4	Far Bearing	Fixed Bearing	Fixed Bearing	1
Bent 1	Cap 1	Reinforced Concrete Pier Cap	Reinforced Concrete Pier Cap	71
Bent 1	Pile 1	Reinforced Concrete Column	Reinforced Concrete Column	1
Bent 1	Pile 2	Reinforced Concrete Column	Reinforced Concrete Column	1
Bent 1	Pile 3	Reinforced Concrete Column	Reinforced Concrete Column	1
Bent 1	Pile 4	Reinforced Concrete Column	Reinforced Concrete Column	1
End Bent 1	Cap 1	Reinforced Concrete Pier Cap	Reinforced Concrete Pier Cap	81
End Bent 1	Abutment	Reinforced Concrete Abutment	Reinforced Concrete Abutment	70
Bent 2	Cap 1	Reinforced Concrete Pier Cap	Reinforced Concrete Pier Cap	71
Bent 2	Pile 1	Reinforced Concrete Column	Reinforced Concrete Column	1

Elements Verified

Location	Name	Component	Element Name	Amount
Bent 2	Pile 2	Reinforced Concrete Column	Reinforced Concrete Column	1
Bent 2	Pile 3	Reinforced Concrete Column	Reinforced Concrete Column	1
Bent 2	Pile 4	Reinforced Concrete Column	Reinforced Concrete Column	1
End Bent 2	Cap 1	Reinforced Concrete Pier Cap	Reinforced Concrete Pier Cap	79
End Bent 2	Abutment	Reinforced Concrete Abutment	Reinforced Concrete Abutment	70
Bent 3	Cap 1	Reinforced Concrete Pier Cap	Reinforced Concrete Pier Cap	70
Bent 3	Pile 1	Reinforced Concrete Column	Reinforced Concrete Column	1
Bent 3	Pile 2	Reinforced Concrete Column	Reinforced Concrete Column	1
Bent 3	Pile 3	Reinforced Concrete Column	Reinforced Concrete Column	1
Bent 3	Pile 4	Reinforced Concrete Column	Reinforced Concrete Column	1

General Inspection Notes

Bent 1 Pile 1
piles not visible for inspection

Bent 2 Pile 1
piles not visible for inspection

National Bridge and NC Inspection Items

Structure Number: 400225

Inspection Date: 10/04/2022

National Bridge Inventory Items

Item	Grade Scale	Grade
Item 58: Deck	0 - 9 , N	4
Item 59: Superstructure	0 - 9 , N	5
Item 60: Substructure	0 - 9 , N	4
Item 61: Channel and Channel Protection	0 - 9 , N	N
Item 62: Culvert	0 - 9 , N	N
Item 71: Waterway Adequacy	0 - 9 , N	N
Item 72: Approach Roadway Alignment	0 - 9 , N	8

Note:
Items 58,59,60,62 reflect this inspection only.

For overall NBI coding grade, see cover sheet.

Note: If NBI Inspection Item is not present, code NBI item with "N"

NC SMU Inspection Items

Item	Grade Scale	Grade	Maint. Qty.	Maint. Code
Deck Debris	G, F, P, or C	G	0	3376
Drainage System	G, F, P, or C	F	2	3332
Utilities	G, F, P, or C			
Slope Protection	G, F, P, or C	G	0	3352
Scour	G, F, P, or C			
Wingwall	G, F, P, or C	F	7	3350
Field Scour Evaluation		N		
Drift	G, F, P, or C		0	3366
Fender System	G, F, P, or C		0	3364
Movable Span Machinery	G, F, P, or C			
Response to Live Load	G, F, P, or C	G		
Superstructure Paint Code		B		

Note: If NC SMU Inspection Item is not present, leave NC SMU item blank

Inspection Information

Item	Grade Scale	Grade
Sign Noticed Issued	YES/NO	N
Priority Maintenance Request Submitted	YES/NO	Y
Inspection Time	Hours	10
Traffic Control Time	Hours	4
Snooper Time	Hours	
Ladder Used	YES/NO	Y
Bucket Truck Used	YES/NO	N
Boat Used	YES/NO	N
Other Equipment Used	YES/NO	N
Portion of Structure in > 3' of water	YES/NO	N

National Bridge and NC SMU Inspection Item Details

Structure Number: 400225

Inspection Date: 10/04/2022

Item	Deck - Item 58	Grade 4	Maint Code	Qty. 0
Details	DELAMINATED AREAS AT TOPSIDE ALONG SHOULDER POOR SPALLS AT JOINTS AT SHOULDERS SOFFIT HAS CRACKING WITH EFFLORESCENCE AND RUST STAINS THROUGHOUT SOFFIT AT BENT 2 HAS SPALL WITH EXPOSED REBAR SPAN 3 HAS WOOD FORMWORK IN PLACE AT PREVIOUS PATCHES			
Item	Superstructure - Item 59	Grade 5	Maint Code	Qty. 0
Details	BEAM ENDS HAVE CORROSION WITH SECTION LOSS AND SOME WITH WELDED REPAIR PLATES WITH RUST SCALE			
Item	Substructure - Item 60	Grade 4	Maint Code	Qty. 0
Details	BENT CAPS HAVE DELAMINATIONS AND CRACKS SCATTERED THROUGHOUT SPALL UNDERMINING BEAM BEARING AT BENT 3 PILES HAVE POOR CRACKS WITH DELAMINATIONS THROUGHOUT			
Item	Priority Maintenance Issued	Grade Y	Maint Code	Qty. 0
Details	BEAM ENDS HAVE CORROSION WITH SECTION LOSS DECK SOFFIT AT BENT 2 HAS SPALL WITH EXPOSED REBAR WITH SECTION LOSS BENT 3 CAP AT BEAM BEARING HAS SPALL UNDERMINING BEARING			
Item	Drainage System	Grade F	Maint Code 3332	Qty. 2
Details	NORTHWEST CATCH BASIN CLOGGED WITH DEBRIS			
Item	Wingwalls	Grade F	Maint Code 3350	Qty. 7
Details	NORTHEAST WINGWALL AT TOP LEFT CORNER, SPALL, 4 INCH DIAMETER X 1/4 INCH DEEP SOUTHEAST WINGWALL, ALONG TOP, 4 SPALLS UP TO 16 INCH LONG X 6 INCH WIDE X 1 INCH DEEP SOUTHWEST WINGWALL AT TOP CORNER, 2 SPALLS, UP TO 1 FOOT LONG X 5 INCH HIGH X 1 INCH DEEP			
Item	General Comments and Misc Items	Grade	Maint Code	Qty. 0
Details	END BENT 2 SLOPE PROTECTION AT SOUTHEAST CORNER, 50 SQUARE FEET OF VEGETATION GROWTH NORTHEAST GUARDRAIL TERMINAL, 1 FOOT OF IMPACT DAMAGE SOUTHEAST GUARDRAIL, STARTING 27 FEET FROM END BENT 2, 15 FEET OF IMPACT DAMAGE WITH UP TO 1 FOOT OF HORIZONTAL DISPLACEMENT WEST APPROACH ASPHALT WEARING SURFACE HAS LONGITUDINAL CRACKS UP TO 1/4 INCH WIDE WITH POTHOLES UP TO 6 INCH DIAMETER X 1 INCH DEEP SOUTHWEST GUARDRAIL, STARTING 115 FEET FROM BRIDGE, 20 FEET OF GUARDRAIL DAMAGE WITH UP TO 1 FOOT HORIZONTAL DISPLACEMENT END BENT 1 SLOPE PROTECTION AT PILE 4, 250 SQUARE FEET OF VEGETATION GROWTH			



Span 3 Deck: IN BAYS 2 AND 3, SCATTERED FORMWORK LEFT IN PLACE



Span 3 Deck: SCATTERED THROUGHOUT BOTH OVERHANGS, HAIRLINE TRANSVERSE CRACKS WITH EFFLORESCENCE



Span 3 Deck: PAR: 10 INCH DIAMETER X 1 INCH DEEP SPALL WITH EXPOSED REBAR, 5 PERCENT SECTION LOSS, IN UNDERSIDE BAY 3 AT 3 FEET PAST CENTER DIAPHRAGM, NO SECTION LOSS



Span 4 Beam 1 - Far Bearing: CORROSION WITH PACK RUST, NO SECTION LOSS



End Bent 2 Cap 1: 6 FEET LONG X 8 INCH HIGH DELAMINATION WITH RUST STAINING IN FACE OF CAP BELOW BAY 1 AND BAY 3 WITH 12 INCH X 3 INCH X 1/2 INCH DEEP SPALL BELOW BAY 3, NO EXPOSED REINFORCEMENT



End Bent 2 Abutment: SCATTERED HAIRLINE MAP CRACKING IN BACKWALL OF BAY 3 AND BAY 4, FULL WIDTH X UP TO 2 FEET HIGH



End Bent 2 Cap 1: BEAM 2 BEARING SEAT IS DELAMINATED FOR 1 FOOT LONG



END BENT 2 SLOPE PROTECTION AT SOUTHEAST CORNER, 50 SQUARE FEET OF VEGETATION GROWTH



NORTHEAST WINGWALL AT TOP LEFT CORNER, SPALL, 4 INCH DIAMETER X 1/4 INCH DEEP



NORTHEAST GUARDRAIL TERMINAL, 1 FOOT OF IMPACT DAMAGE



Span 4 Deck: 26 FEET X 3 FEET DELAMINATION AT CENTERLINE AND WESTBOUND LANES AT END BENT 2 WITH (2) SPALLS UP TO 2 FEET X 9 INCH X 1 1/2 INCH DEEP, NO EXPOSED REINFORCEMENT



Span 4 Deck: NEAR CENTERLINE OF ROAD IN EASTBOUND LANE, UNSOUND ASPHALT PATCH, 5 FEET WIDE X 2 FEET LONG WITH AREAS OF SPALLS UP TO 2 INCH DEEP



Span 4 Expansion Joint: LOSS OF SEAL ADHESION ALONG EXPOSED JOINT IN SHOULDERS



Span 3 Deck: DELAMINATION 360 SQUARE FEET IN WESTBOUND SHOULDER AND 360 SQUARE FEET IN EASTBOUND SHOULDER



Span 4 Deck: EASTBOUND LANE AT END BENT 2, SPALL, 18 INCH WIDE X 8 INCH LONG X UP TO 1 INCH DEEP



SOUTHEAST GUARDRAIL, STARTING 27 FEET FROM END BENT 2, 15 FEET OF IMPACT DAMAGE WITH UP TO 1 FOOT OF HORIZONTAL DISPLACEMENT



SOUTHEAST WINGWALL, ALONG TOP, 4 SPALLS UP TO 16 INCH LONG X 6 INCH WIDE X 1 INCH DEEP



Span 4 Right Bridge Rail: SCATTERED HAIRLINE VERTICAL CRACKING THROUGHOUT, UP TO FULL HEIGHT



Span 4 Deck: 8 FEET TRANSVERSE CRACK UP TO 1/16 INCH WIDE IN FAR RIGHT EASTBOUND TRAVEL LANE NEAR END BENT 2



Span 3 Deck: LEFT SHOULDER, UP TO 50 SQUARE FEET OF UNSOUND PATCHED AREAS WITH CRACKS UP TO 1/16 INCH WIDE WITH EFFLORESCENCE



Span 3 Expansion Joint: LEFT SHOULDER, JOINT IS COMPLETELY FILLED WITH VEGETATION GROWTH



Span 3 Deck: UP TO 4 FEET X 1 FOOT X 5 INCH DEEP SPALL ON LEFT SHOULDER AT BENT 2 JOINT, REBAR COVERED BY PACKED DEBRIS



Span 2 Deck: 6 FEET X 6 INCH X 5 INCH DEEP SPALL ON LEFT SHOULDER AT BENT 2 JOINT, REBAR COVERED BY PACKED DEBRIS



Span 3 Wearing Surface: WESTBOUND LANE, 10 FEET FROM BENT 2, 2 POTHOLES UP TO 2 FOOT DIAMETER WITH ADJACENT CRACKS UP TO 1/16 INCH WIDE



Span 3 Wearing Surface: SCATTERED TRANSVERSE CRACKING UP TO 1/16 INCH WIDE FOR 50 PERCENT OF PAVED JOINT LENGTH AT BENT 2



Span 2 Deck: HAIRLINE MAP CRACKING IN TOP OF LEFT AND RIGHT SHOULDERS FOR FULL WIDTH OF SHOULDER X FULL LENGTH OF SPAN



Span 2 Deck: 3 FEET WIDE DELAMINATION ALONG LEFT SHOULDER FOR ENTIRE SPAN LENGTH



Span 2 Deck: MIDSPAN, ALONG RIGHT SHOULDER, 12 SQUARE FEET OF DELAMINATION



Span 2 Expansion Joint: WESTBOUND LANES, SEPARATION OF JOINT MATERIAL OVER BENT 1, UP TO FULL DEPTH OF FILLER MATERIAL



Span 2 Deck: 5 INCH X 9 INCH X 5 INCH DEEP SPALL ON LEFT SHOULDER AT BENT 1 JOINT, REBAR COVERED BY PACKED DEBRIS



Span 1 Deck: HAIRLINE MAP CRACKING TOPSIDE WITH WEARING SCATTERED THROUGHOUT



Span 1 Deck: TOP OF DECK IN FAR RIGHT EASTBOUND LANE AT BENT 1, 6 FEET X 1 FOOT DELAMINATION WITH CRACKING UP TO 1/8 INCH WIDE



Span 1 Deck: LEFT EASTBOUND LANE, SPALL, 1 FOOT WIDE X 4 INCH LONG X 1 1/2 DEEP



WEST APPROACH ASPHALT WEARING SURFACE HAS LONGITUDINAL CRACKS UP TO 1/4 INCH WIDE WITH POTHOLES UP TO 6 INCH DIAMETER X 1 INCH DEEP



SOUTHWEST GUARDRAIL, STARTING 115 FEET FROM BRIDGE, 20 FEET OF GUARDRAIL DAMAGE WITH UP TO 1 FOOT HORIZONTAL DISPLACEMENT



SOUTHWEST WINGWALL AT TOP CORNER, 2 SPALLS, UP TO 1 FOOT LONG X 5 INCH HIGH X 1 INCH DEEP



End Bent 1 Cap 1: SCATTERED VERTICAL HAIRLINE CRACKS UP TO 1 FOOT HIGH ALONG FACE OF END BENT CAP



End Bent 1 Cap 1: SOUND PATCHED AREA UNDER BAY 2 AND GIRDER 2, 10 FEET LONG X FULL HEIGHT OF CAP



Span 1 Beam 2 - Near Bearing: SURFACE CORROSION ON BEARING PLATES



End Bent 1 Abutment: HAIRLINE MAP CRACKING THROUGHOUT FULL LENGTH OF BACKWALL



NORTHWEST CATCH BASIN CLOGGED WITH DEBRIS



Span 1 Left Bridge Rail: PAR: 1 BOLT OF LEFT GUARDRAIL CONNECTION AT END BENT 1 HAS FAILED, CONNECTION STILL FUNCTIONING



Bent 1 Cap 1: SCATTERED HAIRLINE MAP CRACKING THROUGHOUT FULL LENGTH OF CAP, UP TO FULL HEIGHT



Bent 1 Pile 1: 15 FEET OF SEALED CRACK, SOME WITH RUST STAINING



Span 1 Beam 1: AT BENT 1 LEFT OVERHANG DIAPHRAGM, DELAMINATION, 12 INCH X 6 INCH WITH RUST STAINS



Span 2 Beam 1: AT BENT 1 LEFT OVERHANG DIAPHRAGM, DELAMINATION, 12 INCH X 6 INCH WITH EFFLORESCENCE



Bent 1 Pile 2: 1/4 INCH VERTICAL CRACKING UP TO 8 FEET HIGH



Bent 1 Pile 2: STARTING AT BOTTOM OF PILE ON EAST FACE, DELAMINATION 4 FOOT HIGH X 1 FOOT WIDE



Bent 1 Cap 1: PATCHED PREVIOUS PRIORITY MAINTENANCE UNDER GIRDER 5 SPAN 1



Bent 1 Cap 1: EAST FACE, BELOW GIRDER 7, DELAMINATED AREA UP TO 6 FOOT LONG X 2 FOOT HIGH WITH HAIRLINE CRACKS AND RUST STAINING



Bent 1 Pile 4: 8 FEET OF CRACKING UP TO 1/16 INCH WIDE



END BENT 1 SLOPE PROTECTION AT PILE 4, 250 SQUARE FEET OF VEGETATION GROWTH



Span 2 Beam 5: 3/16 INCH SECTION LOSS (9/16 INCH REMAINING) ON LOWER 10 INCH AND TOP 3 INCH OF WEB FOR 10 INCH LONG AT BENT 1. CORROSION HAS BEEN ARRESTED



Bent 1 Cap 1: PATCHED PREVIOUS PRIORITY MAINTENANCE UNDER GIRDER 5 SPAN 1



Span 2 Beam 5 - Near Bearing: FRECKLED RUST ON BEARING PLATES



Bent 1 Cap 1: PATCHED PREVIOUS PRIORITY MAINTENANCE UNDER GIRDER 6 SPAN 1



Span 2 Beam 5: BENT 1 BAY 5 DIAPHRAGM, SPALL, 10 INCH X 3 INCH X 1 INCH DEEP



Span 1 Beam 4: AT BENT 1, TOP 9 INCHES OF WEB HAS A REPAIR PLATE, 9 INCH HIGH X 9 INCH LONG X 1/2 INCH THICK WITH RUST SCALE



Bent 1 Cap 1: 14 INCH X 3 INCH X 1 INCH DEEP SPALL ON PEDESTAL UNDER GIRDER 4 SPAN 1 WITH NO LOSS OF BEARING AT EAST END OF BEAM, NO EXPOSED REINFORCEMENT



Span 2 Beam 1: AT BENT 1 BAY 1 DIAPHRAGM, SPALL, 1 FOOT LONG X 2 INCH HIGH X 1 INCH DEEP



Span 2 Deck: HAIRLINE MAP CRACKING WITH EFFLORESCENCE SCATTERED THROUGHOUT UNDERSIDE



Span 3 Beam 1: PAR: AT BENT 2 LEFT OVERHANG DIAPHRAGM, SPALL 2 FOOT WIDE X 8 INCH LONG X 2 INCH DEEP WITH EXPOSED REBAR, 5 PERCENT SECTION LOSS



Bent 2 Pile 1: FULL HEIGHT PATCHED AREAS ON WEST FACE WITH RUST STAINS



Bent 2 Cap 1: ALONG CAP SOFFIT, 12 FEET OF EXPOSED REBAR CHAIRS



Bent 2 Cap 1: (5) DELAMINATIONS UP TO 1 FOOT DIAMETER SCATTERED THROUGHOUT EAST FACE



Bent 2 Cap 1: PATCHED PREVIOUS PRIORITY MAINTENANCE ON WEST FACE UNDER GIRDER 5 WITH DELAMINATED AREAS UP TO 2 FOOT DIAMETER



Span 3 Beam 5: AT BENT 2, TOP 6 INCHES OF WEB HAS A REPAIR PLATE, 6 INCH X 6 INCH X 1/2 INCH THICK WITH RUST SCALE



Span 3 Deck: PAR: 2 FEET X 10 INCH X 5 INCH DEEP SPALL WITH EXPOSED REBAR, 5 PERCENT SECTION LOSS, IN UNDERSIDE OF BAY 5 OVER BENT 2



Span 3 Beam 6: CORROSION WITH 1/16 INCH PITTING (11/16 INCH REMAINING) ON FULL HEIGHT OF WEB AT BENT 2



Bent 2 Cap 1: WEST FACE BELOW GIRDER 5 AT BOTTOM OF CAP, DELAMINATION 2 FOOT LONG X 6 INCH HIGH



Bent 2 Pile 3: PATCHED AREAS WITH HAIRLINE CRACKS ON WEST FACE AND SOUTH FACE, 4 FEET WIDE X 7 FEET HIGH



Bent 2 Pile 3: SOUTHEAST FACE STARTING AT GROUND LINE, 6 FOOT HIGH X 2 FOOT WIDE DELAMINATION WITH CRACK UP TO 1/8 INCH WIDE



Bent 2 Pile 3: 20 INCH X 24 INCH X 10 INCH DEEP HOLE AT BASE OF PILE 3 ON WEST FACE



Span 2 Deck: BAY 4 STARTING 15 FEET FROM BENT 2, 2 AREAS UP TO 20 SQUARE FEET OF CRACKING UP TO 1/16 INCH WIDE WITH RUST STAINING



Span 3 Deck: THROUGHOUT UNDERSIDE IN ALL BAYS, HAIRLINE CRACKS WITH EFFLORESCENCE



Span 4 Deck: BENT 3 LEFT OVERHANG SOFFIT, 8 INCH DIAMETER DELAMINATION



Bent 3 Pile 1: FULL HEIGHT 1/8 INCH WIDE VERTICAL CRACK



Bent 3 Pile 3: PATCHED AREA, WEST FACE, 2 FEET WIDE X FULL HEIGHT WITH AREA OF DELAMINATION 4 FEET ABOVE GROUND, 16 INCH IN DIAMETER



Bent 3 Cap 1: ALONG SOFFIT, 9 FEET OF EXPOSED REBAR CHAIRS



Span 3 Beam 2: CORROSION WITH SECTION LOSS (0.99 INCH REMAINING) ON BOTH BOTTOM FLANGES FOR OUTER 2 INCH FOR 1 FOOT AT BENT 3



Span 3 Beam 2: WELDED REPAIR TO BOTH SIDES OF BOTH BEARING STIFFENERS AT BENT 3, 9 INCH X 8 INCH X 3/8 INCH THICK STEEL PLATE



Span 3 Beam 1: CORROSION WITH 1/16 INCH SECTION LOSS FULL HEIGHT OF WEB AT END OF BEAM



Span 4 Beam 3: CORROSION ARRESTED WITH PAINT, 3/16 INCH SECTION LOSS (9/16 INCH REMAINING) ON BOTH BOTTOM FLANGES FOR OUTER 2 INCH FOR 3 FEET STARTING 1.5 FEET FROM BENT 3 WITH 1/8 INCH SECTION LOSS (7/16 INCH REMAINING) ON LOWER 4 INCH OF WEB IN SAME AREA



Span 4 Beam 3: AT BENT 3, LEFT BEARING STIFFENER HAS WELDED REPAIR PLATE, 5 INCH X 5 INCH X 1/2 INCH THICK WITH RUST SCALE



Span 3 Beam 3: WELDED REPAIR TO BOTH SIDES OF BOTH BEARING STIFFENERS AT BENT 3, 9 INCH X 8 INCH X 3/8 INCH THICK STEEL PLATE



Span 4 Beam 4: CORROSION HAS BEEN ARRESTED WITH PAINT, 3/4 INCH SECTION LOSS (1/2 INCH REMAINING) ON BOTTOM LEFT FLANGE FOR OUTER 2 INCH FOR 18 INCH LONG STARTING 8 INCH FROM BENT 3



Span 3 Beam 4: PAR: CORROSION WITH 5/16 INCH SECTION LOSS (15/16 INCH REMAINING) ON LEFT BOTTOM FLANGE FOR OUTER 2 INCH FOR 9 INCH LONG STARTING 7 INCH FROM BENT 3



Bent 3 Cap 1: 18 INCH X 6 INCH X 5 INCH SPALL ON PEDESTAL UNDER END OF SPAN 4 GIRDER 4, NO EXPOSED REBAR, NO BEARING LOSS



Span 3 Beam 5: CORROSION ARRESTED WITH PAINT, 1/2 INCH SECTION LOSS (3/4 INCH REMAINING) ON BOTH BOTTOM FLANGES FOR OUTER 2 INCH FOR 1 FOOT STARTING AT BENT 3



Span 4 Beam 5: WELDED STEEL PLATE REPAIR AT END OF BEAM BEHIND BEARING STIFFENER AT BENT 3, 6 INCH LONG X FULL HEIGHT



Bent 3 Cap 1: PAR: 6 INCH X 4 INCH X 5 INCH SPALL ON PEDESTAL UNDER GIRDER 5 SPAN 4 WITH 1 INCH X 1 1/2 INCH UNDER BEARING, NO EXPOSED REINFORCEMENT



Span 4 Beam 6: CORROSION HAS BEEN ARRESTED WITH PAINT, 3/16 INCH SECTION LOSS (9/16 INCH REMAINING) ON TOP 6 INCH OF WEB FOR 10 INCH LONG AT BENT 3



Span 3 Beam 6: WELDED PLATE REPAIR TO BOTH SIDES OF LEFT BEARING STIFFENER AT BENT 3, 5 INCH HIGH X 4 INCH WIDE X 3/8 INCH THICK WITH RUST SCALE



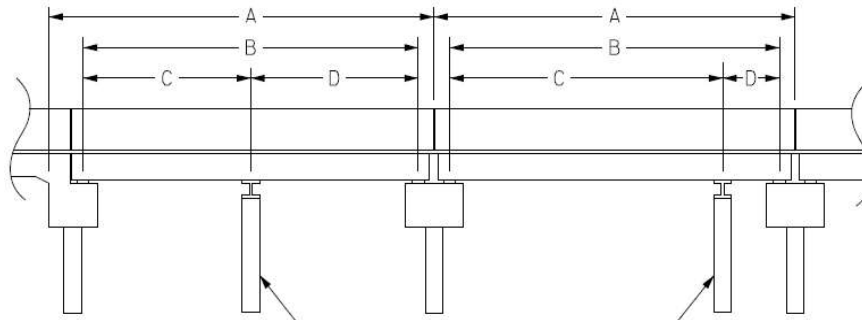
Bent 3 Cap 1: MAP CRACKING UP TO 1/16 INCH WIDE THROUGHOUT

Structure Data Worksheet

Span Profile

County: **GUILFORD**

Structure Number: **400225**



A: SPAN LENGTH
 B: BEARING TO BEARING
 C: DISTANCE FROM NEAR BEARING
 D: DISTANCE TO FAR BEARING

Span Number	Span Length	Bearing to Bearing	Crutch/ Helper Bent	Distance to Near Bearing	Distance to Far Bearing
1	33.875	32.000			
2	92.891	90.170			
3	92.030	90.080			
4	35.708	32.090			

Structure Number: 400225

Span: 2

Route Name: I85S,US29S,US70W



SPAN 2 VERTICAL CLEARANCE, LOOKING SOUTH - REQUEST LIDAR

Route Number: 16000850		Route Name: I85S,US29S,US70W			Reference Feature: H	
Minimum Vertical Clearance 16.080 feet		Maximum Minimum Vertical Clearance 16.580 feet				
Total Horizontal Clearance 72.750 feet		Lateral Clearances: Left: 19.167 feet Right 23.417 feet				
<input checked="" type="checkbox"/> Base Highway Network		LRS Inventory Route, Sub Route Number 10085				
Milepost: 35.200	Number of Lanes: 4	ADT: 19000	Year of ADT: 2015	Percentage of Trucks: 12		
<input checked="" type="checkbox"/> National Highway System			<input type="checkbox"/> STRAHNET Highway Designator			
Functional Classification 12 Local Principal Arterial - Other		Direction of Traffic: 1 1 - way traffic				

LIDAR

Structure Number: 400225

Span: 3

Route Name: I85N,US29N,US70E



SPAN 3 VERTICAL CLEARANCE, LOOKING NORTH - REQUEST LIDAR

Route Number: 16000850		Route Name: I85N,US29N,US70E			Reference Feature: H	
Minimum Vertical Clearance 16.420 feet		Maximum Minimum Vertical Clearance 17.420 feet				
Total Horizontal Clearance 72.333 feet		Lateral Clearances: Left: 18.833 feet Right 23.000 feet				
<input checked="" type="checkbox"/> Base Highway Network		LRS Inventory Route, Sub Route Number 10085				
Milepost: 35.200	Number of Lanes: 4	ADT: 19000	Year of ADT: 2015	Percentage of Trucks: 12		
<input checked="" type="checkbox"/> National Highway System			<input type="checkbox"/> STRAHNET Highway Designator			
Functional Classification 12 Local Principal Arterial - Other		Direction of Traffic: 1 1 - way traffic				

LIDAR

Bridge Inspection Field Sketch



Roadway	47ft Wide	4 Paved Lanes	Looking East
Left Shoulder	10ft Wide	1ft Paved	9ft Unpaved
Right Shoulder	10.5ft Wide	1ft Paved	9.5ft Unpaved
Left Guardrail	10ft from road		
Right Guardrail	10.5ft from road		

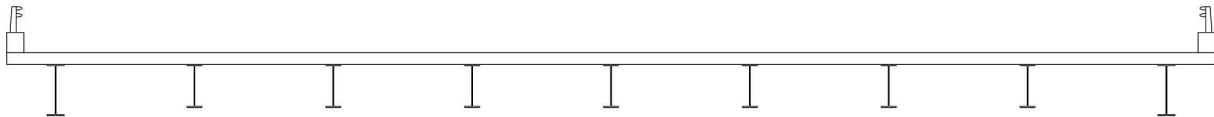
MEASUREMENTS TAKEN 25 FEET WEST OF BRIDGE

VERIFIED 10/04/2022 BY GLH & DRD

Title APPROACH ROADWAY		Description LOOKING EAST	
Structure No: 400225	Drawn By: DRD	Date: 10/7/2022	Filename: S001194000167.wes

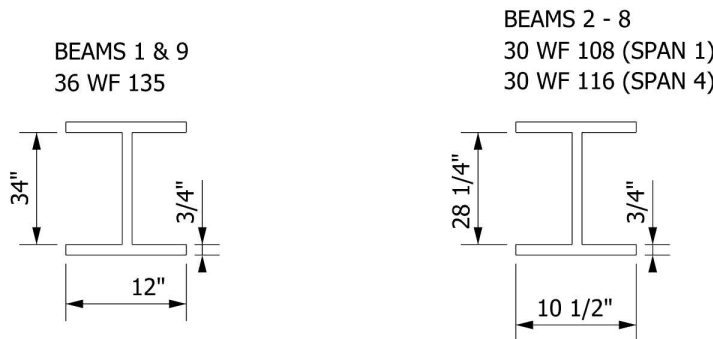
Bridge Inspection Field Sketch

Deck Width/Out to Out	70ft	Between Rails	68ft	
Clear Roadway	67.333ft	Wearing Surface		
Median Width		Median Height		
Curb Height		Left		Right
Sidewalk Width		Left		Right
Clear Roadway (Rail to Median)		Left		Right
Guardrail Width		Left	12in	Right 12in
Top of Rail to Deck/Wearing Surface		Left	2.667ft	Right 2.667ft
Bridge Rail Type		Left	Type 1	Right Type 1



Measurements for Span #	1	SPAN 4 SIMILAR	
Deck Thickness	8.25in	Left Overhang	2.833ft
Top of Rail to Bottom of Beam (Avg)	6.321ft	Right Overhang	2.833ft

Beam #	Beam Type	Width	Height	Spacing	From
1	Rolled Steel Beam	12in	35.6in	2.833ft	Left Edge of Deck
2	Rolled Steel Beam	10.5in	29.8in	8.042ft	Beam 1
3	Rolled Steel Beam	10.5in	29.8in	8.042ft	Beam 2
4	Rolled Steel Beam	10.5in	29.8in	8.042ft	Beam 3
5	Rolled Steel Beam	10.5in	29.8in	8.042ft	Beam 4
6	Rolled Steel Beam	10.5in	29.8in	8.042ft	Beam 5
7	Rolled Steel Beam	10.5in	29.8in	8.042ft	Beam 6
8	Rolled Steel Beam	10.5in	29.8in	8.042ft	Beam 7
9	Rolled Steel Beam	12in	35.6in	8.042ft	Beam 8

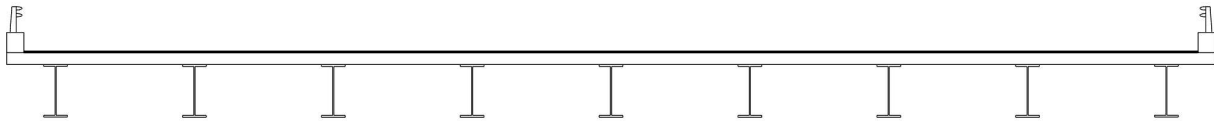


UPDATED 10/04/2022 BY GLH & DRD

Title TYPICAL SECTION - SPAN 1		Description 9 LINES OF STEEL I BEAMS	
Structure No: 400225	Drawn By: DRD	Date: 10/7/2022	Filename: S001194000171.wes

Bridge Inspection Field Sketch

Deck Width/Out to Out	70ft	Between Rails	68ft		
Clear Roadway	67.333ft	Wearing Surface	1in		
Median Width		Median Height			
Curb Height		Left	Right		
Sidewalk Width		Left	Right		
Clear Roadway (Rail to Median)		Left	Right		
Guardrail Width		Left	12in	Right	12in
Top of Rail to Deck/Wearing Surface		Left	2.584ft	Right	2.584ft
Bridge Rail Type		Left	Type 1	Right	Type 1



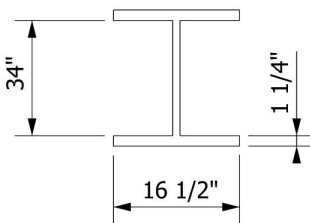
Measurements for Span #	2	SPAN 3 SIMILAR	
Deck Thickness	8.25in	Left Overhang	2.833ft
Top of Rail to Bottom of Beam (Avg)	6.396ft	Right Overhang	2.833ft

Beam #	Beam Type	Width	Height	Spacing	From
1	Plate Girder	16.5in	36.5in	2.833ft	Left Edge of Deck
2	Plate Girder	16.5in	36.7in	8.042ft	Beam 1
3	Plate Girder	16.5in	36.7in	8.042ft	Beam 2
4	Plate Girder	16.5in	36.7in	8.042ft	Beam 3
5	Plate Girder	16.5in	36.7in	8.042ft	Beam 4
6	Plate Girder	16.5in	36.7in	8.042ft	Beam 5
7	Plate Girder	16.5in	36.7in	8.042ft	Beam 6
8	Plate Girder	16.5in	36.7in	8.042ft	Beam 7
9	Plate Girder	16.5in	36.5in	8.042ft	Beam 8

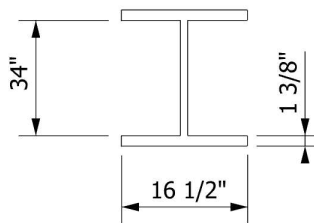
BEAMS 1 & 9: BOTTOM COVER PLATE 1 1/2" X 12"

BEAMS 2-8: BOTTOM COVER PLATE 1 3/4" X 12"

SPAN 2 BEAMS 2 - 8
SPAN 3 ALL BEAMS
36 WF 230



SPAN 2 BEAMS 1 & 9
36 WF 245



UPDATED 10/04/2022 BY GLH & DRD

Title
TYPICAL SECTION - SPANS 2 & 3

Description
9 LINES OF STEEL I BEAMS

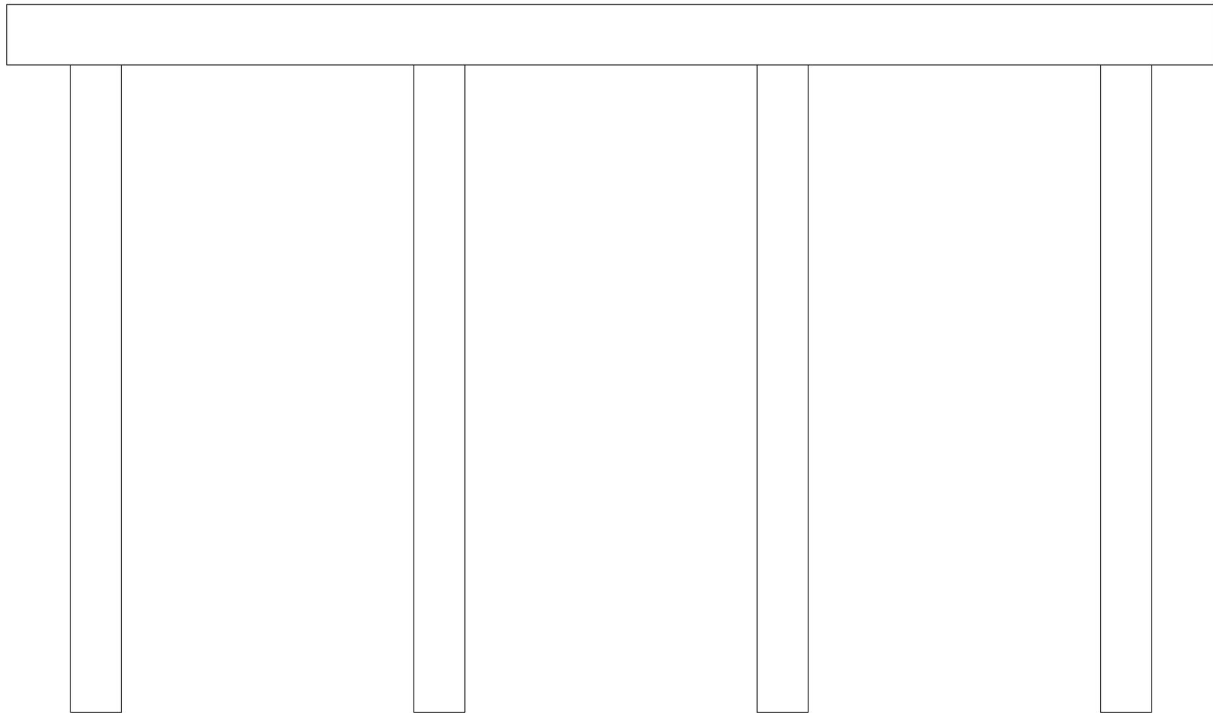
Structure No: 400225

Drawn By: DRD

Date: 10/7/2022

Filename: S001194000172.wes

Bridge Inspection Field Sketch

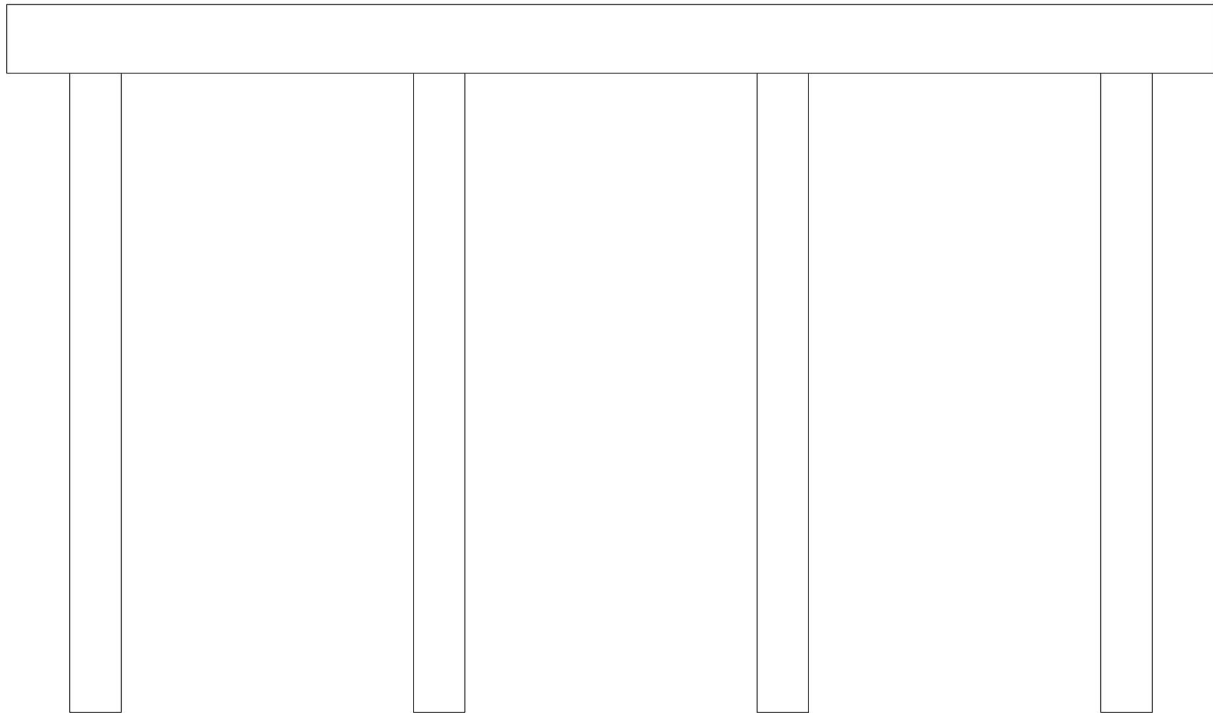


Caps							
#	Name	Type	Length	Width	Height	Left Beam to End of Cap	Right Beam to End of Cap
1	Cap 1	Reinforced Concrete Pier Cap	71ft	38in	42.6in	1.688ft	1.698ft
Piles							
#	Name	Type	Spacing	From	Height/Diam.	Width	Length
1	Pile 1	Reinforced Concrete Column	5.25ft	Left End of Bent	36in		15.75ft
2	Pile 2	Reinforced Concrete Column	20.167ft	Pile 1	36in		20.75ft
3	Pile 3	Reinforced Concrete Column	20.167ft	Pile 2	36in		21.25ft
4	Pile 4	Reinforced Concrete Column	20.167ft	Pile 3	36in		21.87ft

UPDATED 10/04/2022 BY GLH & DRD

Title BENT 1		Description BENT 1					
Structure No: 400225	Drawn By: DRD	Date: 10/7/2022	Filename: S001194000168.wes				

Bridge Inspection Field Sketch

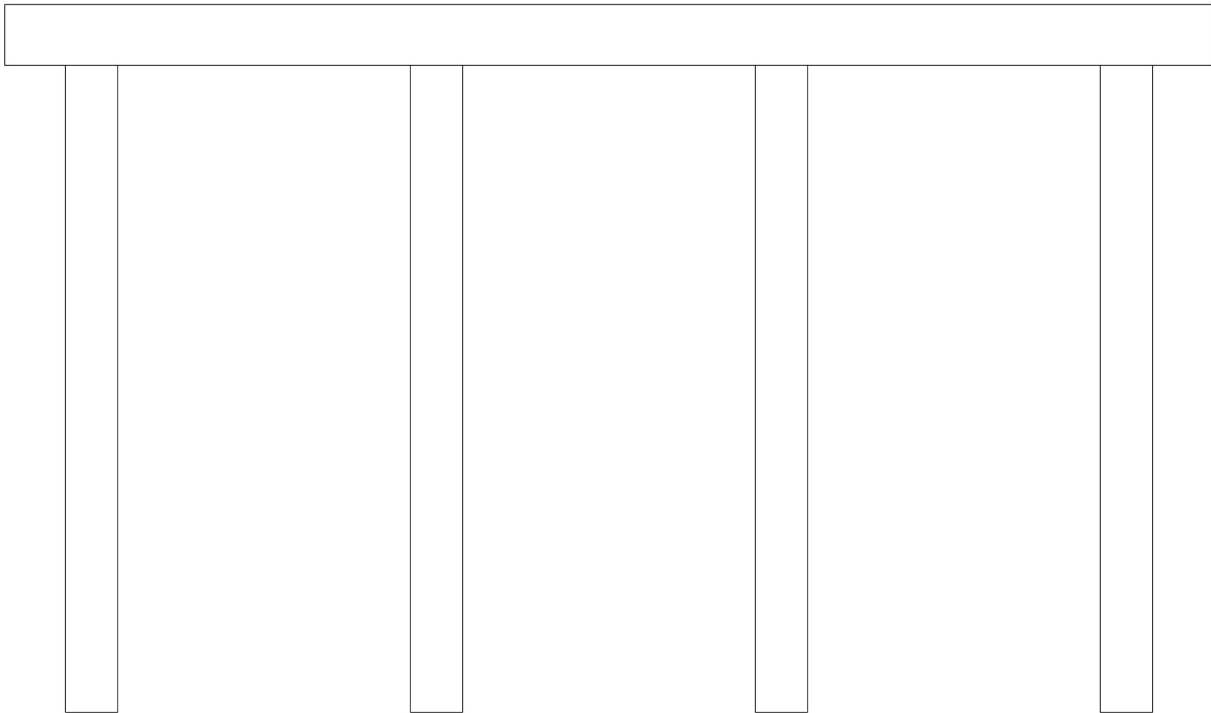


Caps							
#	Name	Type	Length	Width	Height	Left Beam to End of Cap	Right Beam to End of Cap
1	Cap 1	Reinforced Concrete Pier Cap	70.333ft	38in	48in	1.667ft	1.667ft
Piles							
#	Name	Type	Spacing	From	Height/Diam.	Width	Length
1	Pile 1	Reinforced Concrete Column	5.167ft	Left End of Bent	36in		18.75ft
2	Pile 2	Reinforced Concrete Column	20ft	Pile 1	36in		0ft
3	Pile 3	Reinforced Concrete Column	20ft	Pile 2	36in		19.26ft
4	Pile 4	Reinforced Concrete Column	20ft	Pile 3	36in		19.776ft

UPDATED 10/04/2022 BY GLH & DRD

Title BENT 2		Description BENT 2	
Structure No: 400225	Drawn By: DRD	Date: 10/7/2022	Filename: S001194000169.wes

Bridge Inspection Field Sketch



Caps							
#	Name	Type	Length	Width	Height	Left Beam to End of Cap	Right Beam to End of Cap
1	Cap 1	Reinforced Concrete Pier Cap	69.5ft	38in	42in	1.641ft	1.49ft
Piles							
#	Name	Type	Spacing	From	Height/Diam.	Width	Length
1	Pile 1	Reinforced Concrete Column	5ft	Left End of Bent	36in		17ft
2	Pile 2	Reinforced Concrete Column	19.833ft	Pile 1	36in		21.167ft
3	Pile 3	Reinforced Concrete Column	19.833ft	Pile 2	36in		21.67ft
4	Pile 4	Reinforced Concrete Column	19.833ft	Pile 3	36in		25.167ft

UPDATED 10/04/2022 BY GLH & DRD

Title BENT 3		Description BENT 3	
Structure No: 400225	Drawn By: DRD	Date: 10/7/2022	Filename: S001194000170.wes



SPAN 3 SUPERSTRUCTURE



SPAN 3 BAY 1 INTERMEDIATE DIAPHRAGM



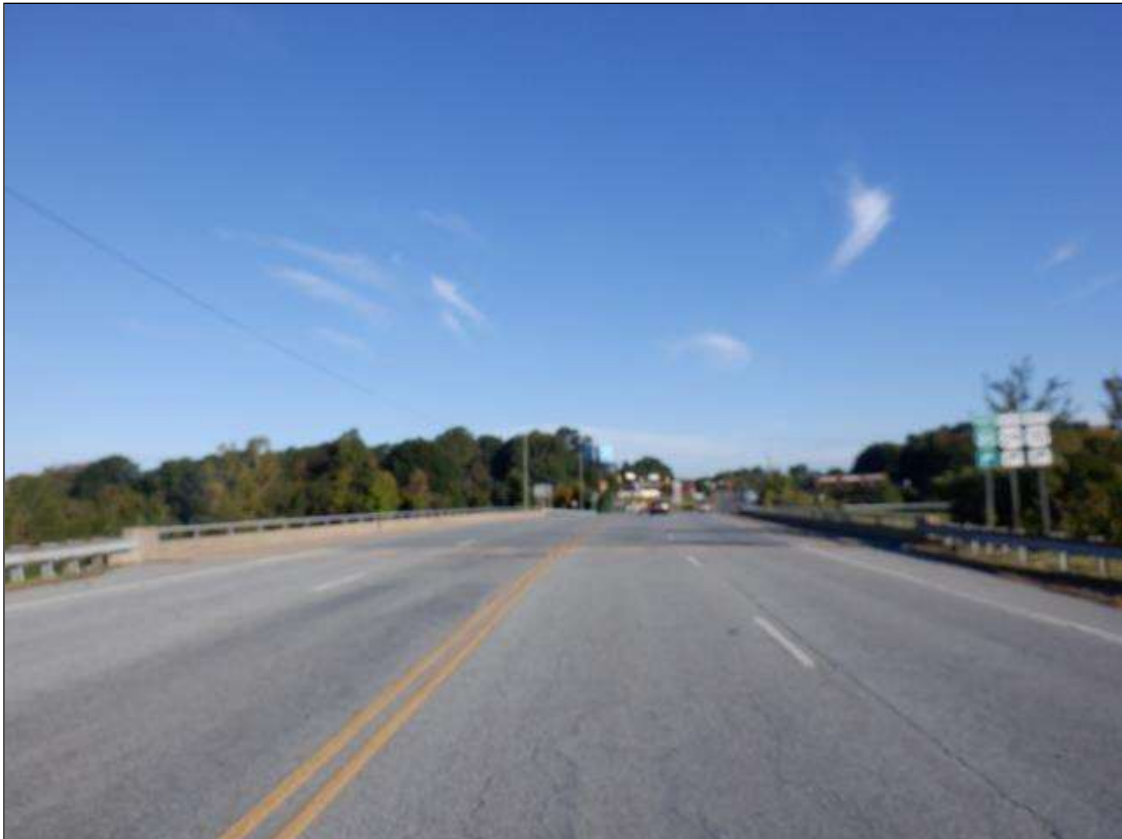
END BENT 2



SPAN 4 BEAM 6 FAR BEARING



NORTHEAST WINGWALL



LOOKING WEST



NORTHEAST GUARDRAIL TRANSITION



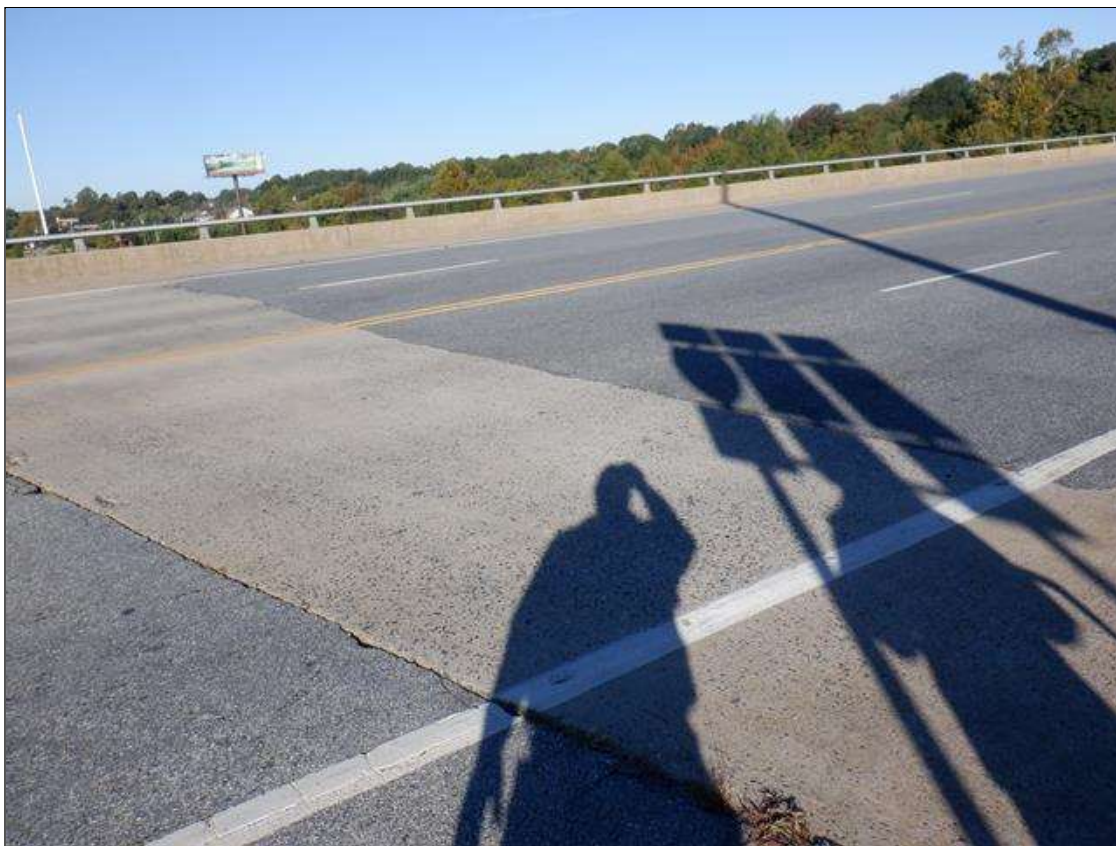
NORTHEAST GUARDRAIL ATTACHMENT



NORTHEAST BRIDGE PLAQUE



LEFT BRIDGE RAIL



SPAN 4 DECK/WEARING SURFACE



EAST APPROACH



LOOKING NORTH FROM BRIDGE



LOOKING SOUTH FROM BRIDGE



WEST APPROACH



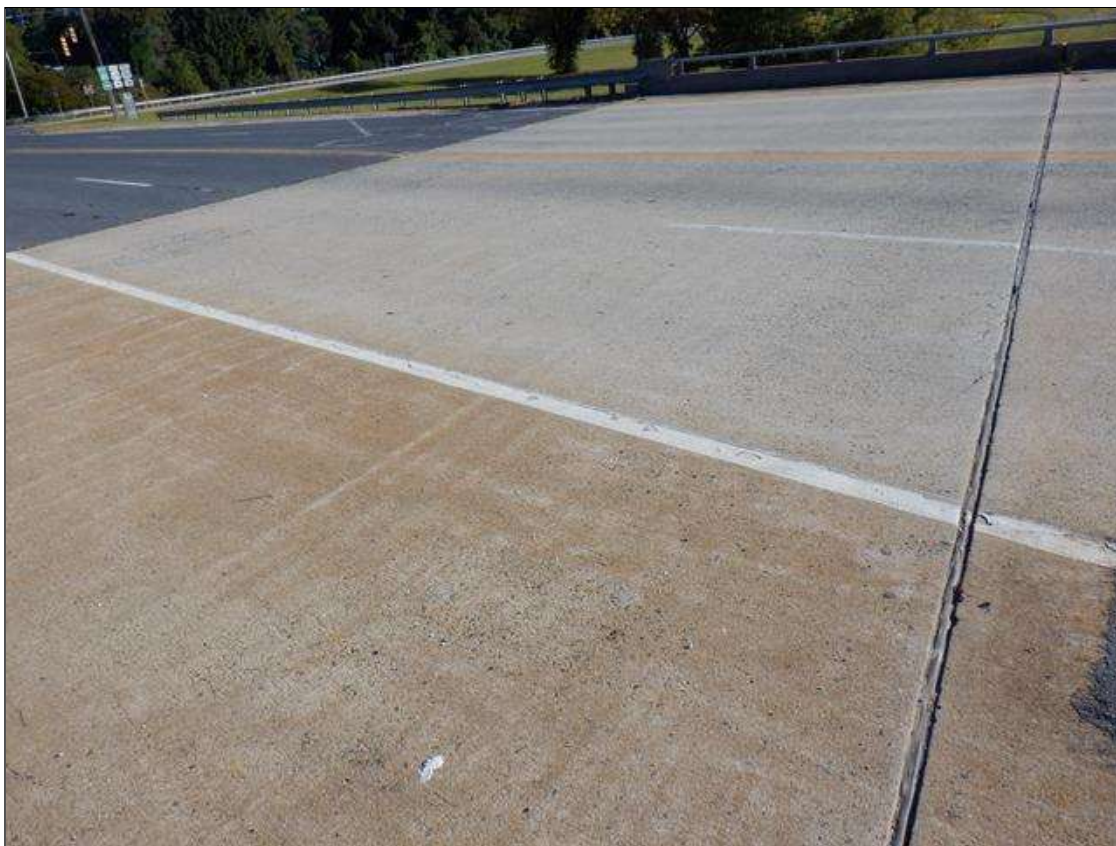
ALONG LEFT BRIDGE RAIL, 4 INCH DIAMETER SCUPPER



SPAN 3 WEARING SURFACE



BENT 1 JOINT



SPAN 1 DECK



LOOKING EAST



END BENT 1



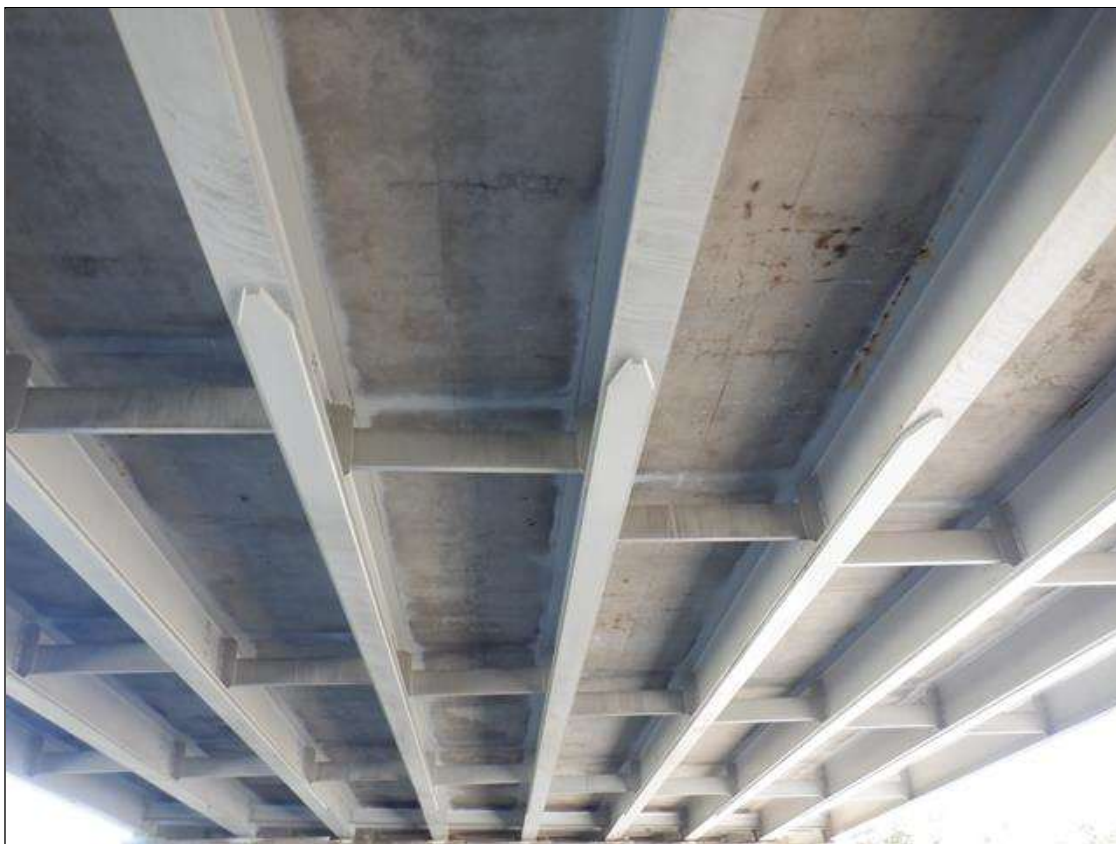
SPAN 1 BEAM 9 NEAR BEARING



SOUTH STRUCTURE PROFILE



SPAN 3 VERTICAL CLEARANCE, LOOKING NORTH



SPAN 2 SUPERSTRUCTURE



NORTH STRUCTURE PROFILE



SPAN 2 VERTICAL CLEARANCE, LOOKING SOUTH



BENT 1 BEAM 5 BEARINGS



BENT 2 BEAM 5 BEARINGS



TRAFFIC CONTROL USE BELOW SPAN 2



BENT 2 LOOKING EAST