



STATE OF NORTH CAROLINA
DEPARTMENT OF TRANSPORTATION

ROY COOPER
GOVERNOR

J. ERIC BOYETTE
SECRETARY

April 11, 2023

Addendum No. 1

RE: Contract # C204793

WBS # 67041.3.1, 67043.3.1

STATE FUNDED

Rockingham County (BR-0041, BR-0043)

BRIDGE 78001 OVER US-29 ON SR-2817 AND BRIDGE 780151 OVER US-29 ON US-158.

April 18, 2023 Letting

To Whom It May Concern:

Reference is made to the proposal and plans furnished to you on this project.

The following revisions have been made to the Utility Construction Plans.

Sheet No.	Revision
UC-5	Revised to remove roadway and drainage notes that do not apply to the utility construction.
UC-6	Revised to call for a 12-inch vertical separation between the water main WL1 and existing gas mains.

Please void the above listed Sheets in your Plans and staple the revised Sheets thereto.

The following revisions have been made to the proposal.

Page No.	Revision
Proposal Cover	Note added that reads "Includes Addendum No. 1 Dated 04-11-2023".
UC-4	Unit Project Special Provision entitled UTILITY CONSTRUCTION EXHIBIT C revised. Added the following statement: "The valve shall be manufactured in accordance with AWWA C512."
UC-9	Unit Project Special Provision entitled UTILITY CONSTRUCTION EXHIBIT C revised. Combined and revised sixth and seventh paragraphs.

Mailing Address:
NC DEPARTMENT OF TRANSPORTATION
CONTRACT STANDARDS AND DEVELOPMENT
1591 MAIL SERVICE CENTER
RALEIGH, NC 27699-1591

Telephone: (919) 707-6900
Fax: (919) 250-4127
Customer Service: 1-877-368-4968

Location:
1020 BIRCH RIDGE DR.
RALEIGH, NC 27610

Website: www.ncdot.gov

Please void the above listed existing Pages in your proposal and staple the revised Pages thereto.

The contract will be prepared accordingly.

Sincerely,

DocuSigned by:

F81B6038A47A442...

Ronald E. Davenport, Jr., PE
State Contract Officer

RED/cms
Attachments

cc: Mr. Boyd Tharrington, PE
Mr. Wright R. Archer, III, PE
Mr. Ken Kennedy, PE
Mr. Mike Gwyn
Project File (2)

Mr. Forrest Dungan, PE
Ms. Jaci Kincaid
Mr. Jon Weathersbee, PE

STATE OF NORTH CAROLINA
DEPARTMENT OF TRANSPORTATION
RALEIGH, N.C.

PROPOSAL

INCLUDES ADDENDUM No. 1 DATED 04-11-2023

DATE AND TIME OF BID OPENING: **Apr 18, 2023 AT 02:00 PM**

CONTRACT ID C204793
WBS 67041.3.1, 67043.3.1

FEDERAL-AID NO. STATE FUNDED
COUNTY ROCKINGHAM
T.I.P NO. BR-0041, BR-0043
MILES 0.887
ROUTE NO.
LOCATION BRIDGE 78001 OVER US-29 ON SR-2817 AND BRIDGE 780151 OVER US-29 ON US-158.

TYPE OF WORK GRADING, DRAINAGE, PAVING, SIGNAL, AND STRUCTURE.

NOTICE:

ALL BIDDERS SHALL COMPLY WITH ALL APPLICABLE LAWS REGULATING THE PRACTICE OF GENERAL CONTRACTING AS CONTAINED IN CHAPTER 87 OF THE GENERAL STATUTES OF NORTH CAROLINA WHICH REQUIRES THE BIDDER TO BE LICENSED BY THE N.C. LICENSING BOARD FOR CONTRACTORS WHEN BIDDING ON ANY NON-FEDERAL AID PROJECT WHERE THE BID IS \$30,000 OR MORE, EXCEPT FOR CERTAIN SPECIALTY WORK AS DETERMINED BY THE LICENSING BOARD. BIDDERS SHALL ALSO COMPLY WITH ALL OTHER APPLICABLE LAWS REGULATING THE PRACTICES OF ELECTRICAL, PLUMBING, HEATING AND AIR CONDITIONING AND REFRIGERATION CONTRACTING AS CONTAINED IN CHAPTER 87 OF THE GENERAL STATUTES OF NORTH CAROLINA. NOTWITHSTANDING THESE LIMITATIONS ON BIDDING, THE BIDDER WHO IS AWARDED ANY FEDERAL - AID FUNDED PROJECT SHALL COMPLY WITH CHAPTER 87 OF THE GENERAL STATUTES OF NORTH CAROLINA FOR LICENSING REQUIREMENTS WITHIN 60 CALENDAR DAYS OF BID OPENING.

BIDS WILL BE RECEIVED AS SHOWN BELOW:

THIS IS A ROADWAY & STRUCTURE PROPOSAL

5% BID BOND OR BID DEPOSIT REQUIRED

Project: BR-0041

UC-4

County: Rockingham

PROJECT SPECIAL PROVISIONS

Utility Construction

175 psi working pressure and 300 psi hydrostatic test pressure with a 2-inch operating nut. Valves shall be cast iron or ductile iron.

Page 10-63; Sub-article 1036-7 Water Valves

Add the following:

Air Release Valves

Air release valves shall be 2-inch Pressure Air Valves with a vacuum check unit, or 2-inch with a vacuum check unit or equal as approved by the Public Utilities Director. These valves shall be suitable for 150 psi working pressure and designed to allow air to escape automatically while the main is in service and under pressure. The valve shall be manufactured in accordance with AWWA C512. The valve shall be housed in an approved eccentric manhole and shall be installed in accordance with the Standard Detail of these specifications. Air release valve locations shall be approved by the Public Utilities Director and shown on the plans.

Tapping Sleeves and Tapping Saddles

Tapping sleeves shall be mechanical joint outlet seal, or square seal as approved by the City. All sleeves shall have a minimum of 150 psi working pressure. All sleeves larger than 12 inches shall be ductile iron. All taps shall be machine drilled; no burned taps will be allowed.

Tapping saddles may be used on mains sixteen (16) inches and larger. Tapping saddles shall be manufactured of ductile iron providing a factor of safety of 2.5 at a working pressure of 250 psi. Saddles shall be equipped with a standard AWWA C-110 flange connection on the branch. Sealing gaskets shall be "O"-ring type, high quality molder rubber having an approximate seventy durometer hardness, placed into a groove on the curved surface of the tapping saddle. Straps shall be of alloy steel. The tapping saddle shall be approved by the City. All taps shall be machine cut; no burned taps will be allowed. Saddles may be used for taps one-half the size of the main or less (i.e., 8-inch tapping saddle for use on a 16-inch main). Sleeves shall be used on taps over one-half the size of the main.

Valve Boxes

Adjustable valve boxes shall be gray cast iron of the dimensions specified in the Standard Details of these specifications. The word "Water" shall be cast into the lid. The valve box shall be approved by the City.

Project: BR-0041

UC-9

County: Rockingham

PROJECT SPECIAL PROVISIONS

Utility Construction

The following quantities of 65% HTH compound per 1000 feet of line is required to produce a solution concentration of 50ppm total chlorine as state above:

Pipe Size (inches)	65% HTH (lbs. per 1,000 feet of line)
2-inch	0.11
4-inch	0.42
6-inch	0.94
8-inch	1.68
12-inch	3.77
16-inch	6.72
24-inch	15.70

The HTH solution shall be circulated in the line by opening the control valve and systematically manipulating hydrants and taps at the line extremities. The HTH solution must be pumped into the line at a constant rate for each discharge rate in order that a uniform concentration will be maintained in the line.

The HTH solution shall remain in the lines for a minimum of 24 hours. If directed by the Engineer, the HTH solution shall remain in the lines longer than 24 hours. At the end of this period the free residual chlorine shall be a minimum of 25 ppm or the lines shall be re-chlorinated.

Extreme caution shall be exercised at all times in order to prevent the HTH solution from entering the City of Reidsville's existing water system.

The lines shall be flushed after the 24 hour or longer period outlined above, provided the free residual chlorine analysis is satisfactory. The flushing shall continue until an orthotolidine check shows that the lines contain only the normal chlorine residual.

Provide certified bacteriological and contaminant test results from a state-approved or state-certified laboratory. If test results are unsatisfactory, all lines shall immediately be re-chlorinated, then proceed with such measures as are necessary to secure sterile lines. All laterals shall be re-chlorinated during this process.

At the satisfactory completion of the bacteriological requirements, the lines shall be placed into service under the supervision of the Engineer. All valves shall be fully opened.

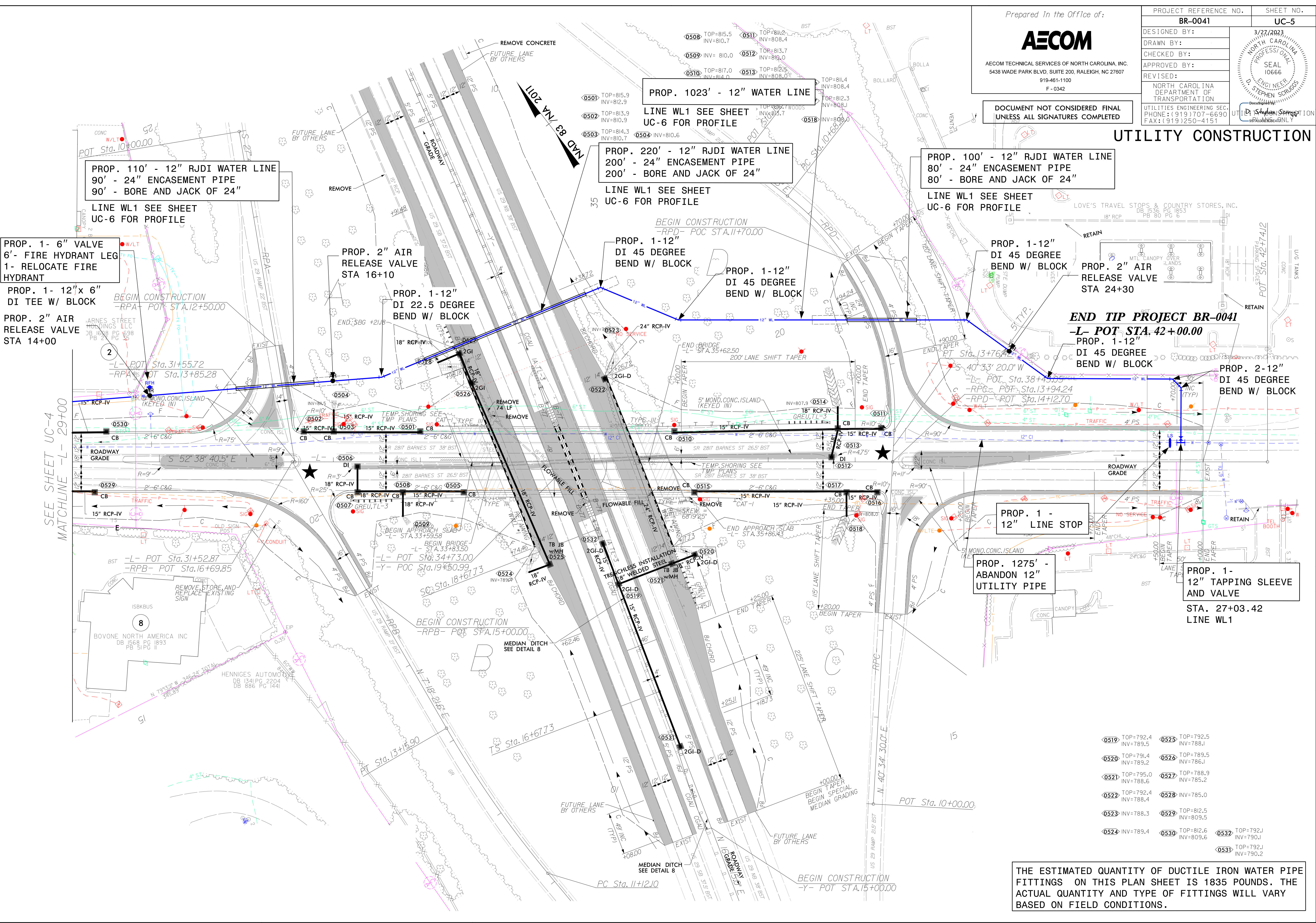


AECOM TECHNICAL SERVICES OF NORTH CAROLINA, INC.
5438 WADE PARK BLVD, SUITE 200, RALEIGH, NC 27607
919-461-1100
F-0342

DOCUMENT NOT CONSIDERED FINAL
UNLESS ALL SIGNATURES COMPLETED

PROJECT REFERENCE NO.	SHEET NO.
BR-0041	UC-5
DESIGNED BY:	3/27/2023
DRAWN BY:	
CHECKED BY:	
APPROVED BY:	
REVISED:	
UTILITIES ENGINEERING SEC. PHONE: (919) 707-6690 FAX: (919) 250-4151	

UTILITY CONSTRUCTION



PROP. 110' - 12" RJDI WATER LINE
90' - 24" ENCASEMENT PIPE
90' - BORE AND JACK OF 24"
LINE WL1 SEE SHEET UC-6 FOR PROFILE

PROP. 1023' - 12" WATER LINE
LINE WL1 SEE SHEET UC-6 FOR PROFILE

PROP. 220' - 12" RJDI WATER LINE
200' - 24" ENCASEMENT PIPE
200' - BORE AND JACK OF 24"
LINE WL1 SEE SHEET UC-6 FOR PROFILE

PROP. 100' - 12" RJDI WATER LINE
80' - 24" ENCASEMENT PIPE
80' - BORE AND JACK OF 24"
LINE WL1 SEE SHEET UC-6 FOR PROFILE

PROP. 1- 6" VALVE
6'- FIRE HYDRANT LEG
1- RELOCATE FIRE HYDRANT

PROP. 1- 12"x 6" DI TEE W/ BLOCK
PROP. 2" AIR RELEASE VALVE STA 14+00

PROP. 2" AIR RELEASE VALVE STA 16+10

PROP. 1- 12" DI 22.5 DEGREE BEND W/ BLOCK

PROP. 1- 12" DI 45 DEGREE BEND W/ BLOCK

PROP. 1- 12" DI 45 DEGREE BEND W/ BLOCK

PROP. 1- 12" DI 45 DEGREE BEND W/ BLOCK

PROP. 2" AIR RELEASE VALVE STA 24+30

END TIP PROJECT BR-0041
-L- POT STA. 42+00.00
PROP. 1- 12" DI 45 DEGREE BEND W/ BLOCK

PROP. 2- 12" DI 45 DEGREE BEND W/ BLOCK

PROP. 1 - 12" LINE STOP

PROP. 1275' - ABANDON 12" UTILITY PIPE

PROP. 1- 12" TAPPING SLEEVE AND VALVE STA. 27+03.42 LINE WL1

0519	TOP=792.4 INV=789.5	0525	TOP=792.5 INV=788.1
0520	TOP=791.4 INV=789.2	0526	TOP=789.5 INV=786.1
0521	TOP=795.0 INV=788.6	0527	TOP=788.9 INV=785.2
0522	TOP=792.4 INV=788.4	0528	INV=785.0
0523	INV=788.3	0529	TOP=812.5 INV=809.5
0524	INV=789.4	0530	TOP=812.6 INV=809.6
		0532	TOP=792.1 INV=790.1
		0531	TOP=792.1 INV=790.2

THE ESTIMATED QUANTITY OF DUCTILE IRON WATER PIPE FITTINGS ON THIS PLAN SHEET IS 1835 POUNDS. THE ACTUAL QUANTITY AND TYPE OF FITTINGS WILL VARY BASED ON FIELD CONDITIONS.

DOCUMENT NOT CONSIDERED FINAL
UNLESS ALL SIGNATURES COMPLETED

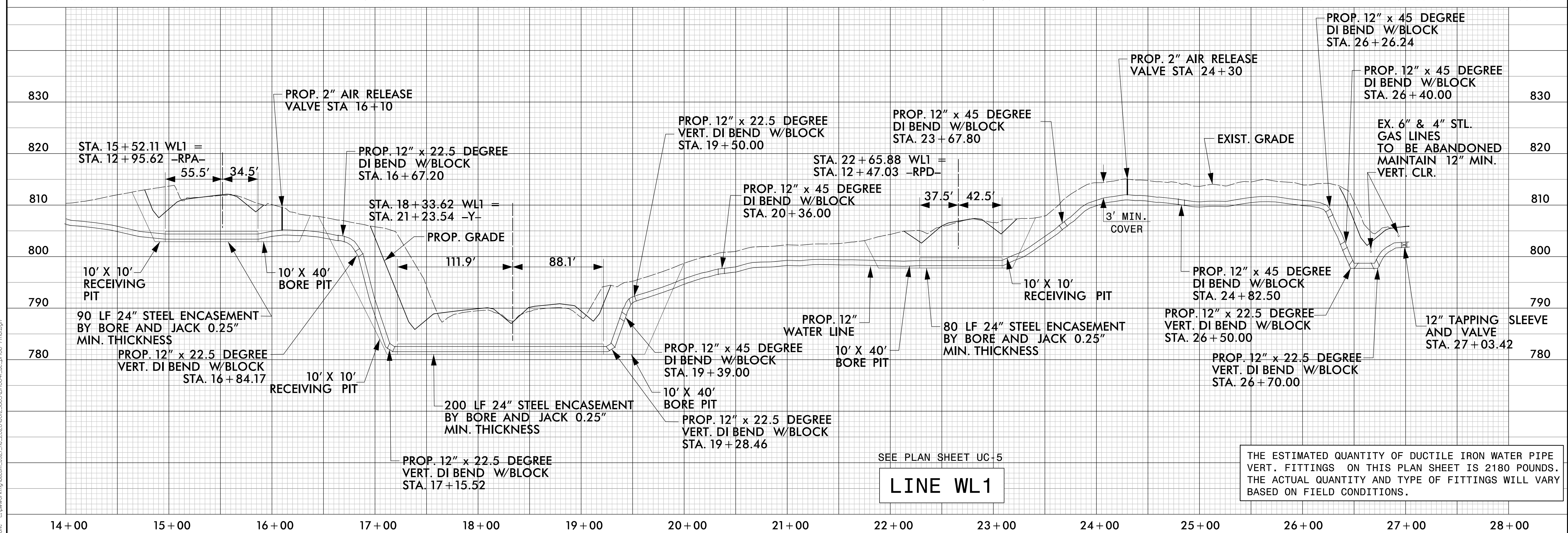
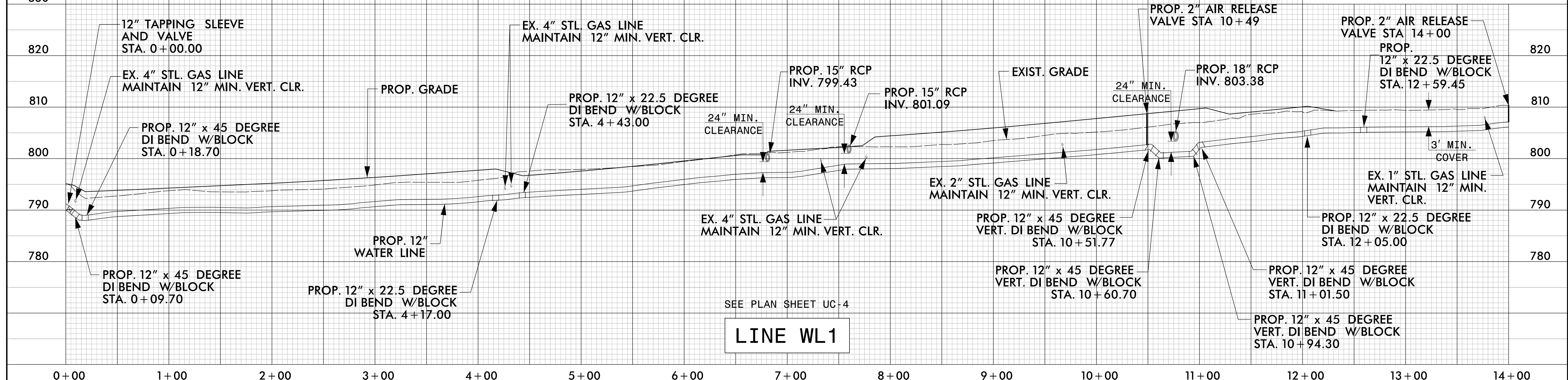
Prepared in the Office of:



AECOM TECHNICAL SERVICES OF NORTH CAROLINA, INC.
5438 WADE PARK BLVD, SUITE 200, RALEIGH, NC 27607
919-461-1100
F-0342

PROJECT REFERENCE NO. BR-0041	SHEET NO. UC-6
DESIGNED BY:	3/27/2023
DRAWN BY:	
CHECKED BY:	
APPROVED BY:	
REVISED:	
NORTH CAROLINA DEPARTMENT OF TRANSPORTATION	
UTILITIES ENGINEERING SEC. PHONE: (919) 707-6690 FAX: (919) 250-4151	
D. Stephen Scruggs 957A10C3DE477	

UTILITY CONSTRUCTION



THE ESTIMATED QUANTITY OF DUCTILE IRON WATER PIPE VERT. FITTINGS ON THIS PLAN SHEET IS 2180 POUNDS. THE ACTUAL QUANTITY AND TYPE OF FITTINGS WILL VARY BASED ON FIELD CONDITIONS.

DATE: 3/27/2023
TIME: 4:05:54 PM
DWG: 230909K17g/ucm/462/na_2022/00/25665/BR0041/uc/6-1/na/1.dgn