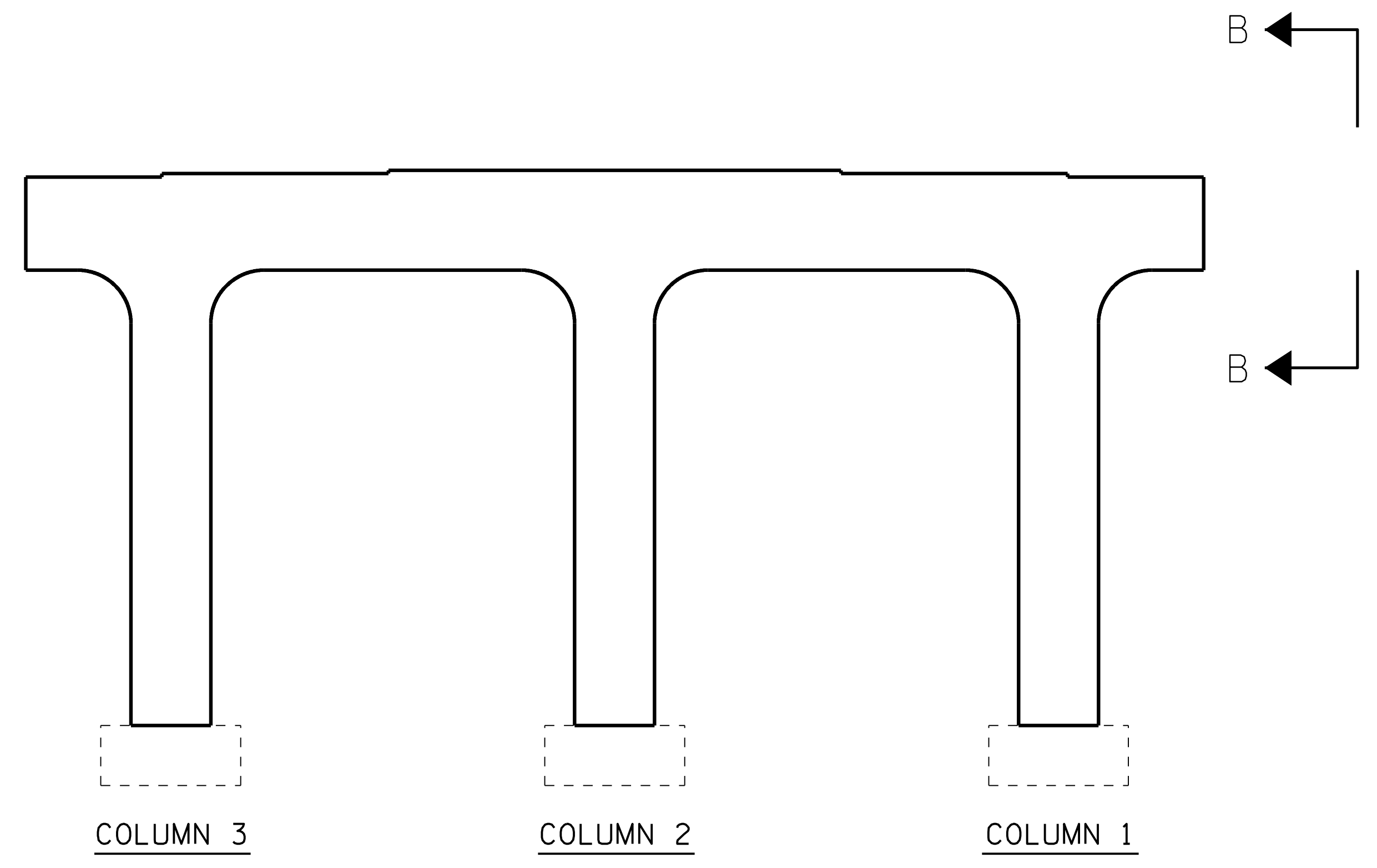
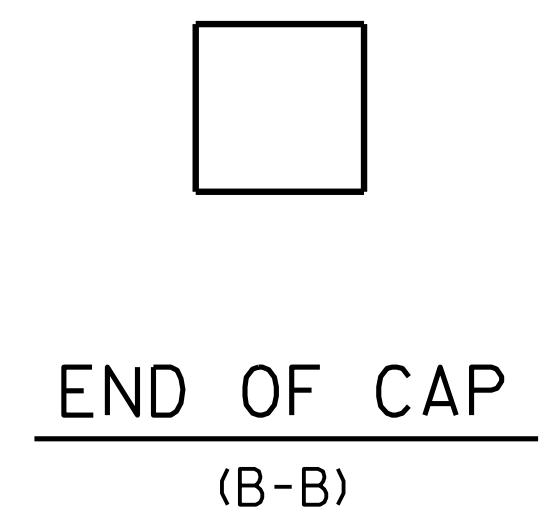


BOTTOM OF CAP @ BENT 2



ELEVATION @ BENT 2 (SPAN C)



AS-BUILT REPAIR QUANTITY TABLE				
REPAIRS BENT 2	QUANTITIES			
	ESTIMATE		ACTUAL	
SHOTCRETE REPAIRS	AREA SF	VOLUME CF	AREA SF	VOLUME CF
CAP	4.1	2.1		
COLUMN	0.0	0.0		
CONCRETE REPAIRS	AREA SF	VOLUME CF	AREA SF	VOLUME CF
CAP	0.0	0.0		
COLUMN	0.0	0.0		
EPOXY RESIN INJECTION		LN. FT.		LN. FT.
CAP		5.6		
COLUMN		6.8		
EPOXY COATING		SQ. FT.		SQ. FT.
TOP OF BENT CAP		129.0		

VALUES IN CHART REPRESENT ESTIMATED REPAIR TOTALS AFTER REMOVAL OF UNSOUND CONCRETE, MIN. OF 1" BEHIND REBAR AND 2" MIN. CLEAR TO SAWCUT.

- SHOTCRETE REPAIR
- CONCRETE REPAIR
- EPOXY RESIN INJECTION (ERI)

PROJECT NO. I-5927
POLK COUNTY
 BRIDGE NO. 740025

SHEET 2 OF 2

STATE OF NORTH CAROLINA
 DEPARTMENT OF TRANSPORTATION
 RALEIGH

**BENT 2
 (SPAN C)**



VOLKERT

5540 Centerview Drive, Suite 305
 Raleigh, NC 27606
 Tel. 919-854-0344 Fax. 919-854-0355
 NC License No. F-0765

DOCUMENT NOT CONSIDERED
 FINAL UNLESS ALL
 SIGNATURES COMPLETED

REVISIONS						SHEET NO.
NO.	BY:	DATE:	NO.	BY:	DATE:	S-27
1			3			TOTAL SHEETS
2			4			79

DRAWN BY : D. A. GLADDEN DATE : 5/21
 CHECKED BY : E. MURRAY DATE : 12/22