

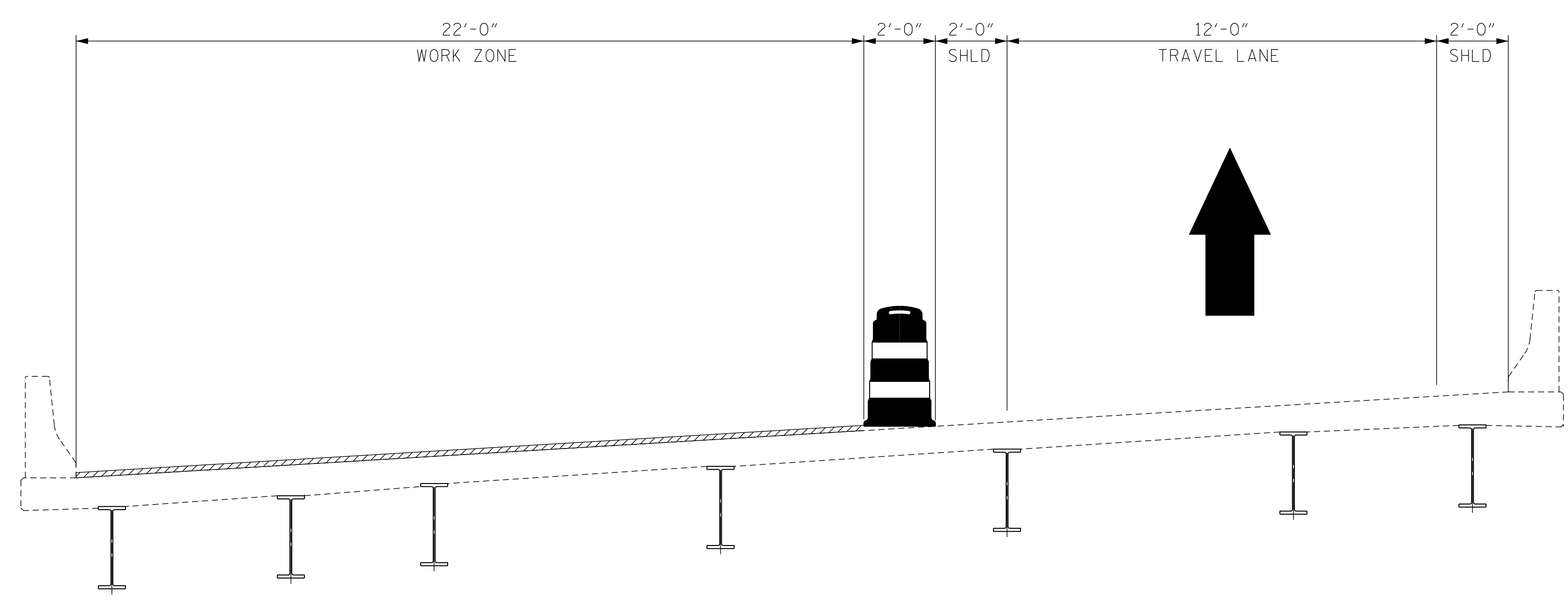
TRAFFIC CONTROL PHASING NOTES:

PHASE I (I-26 EB):

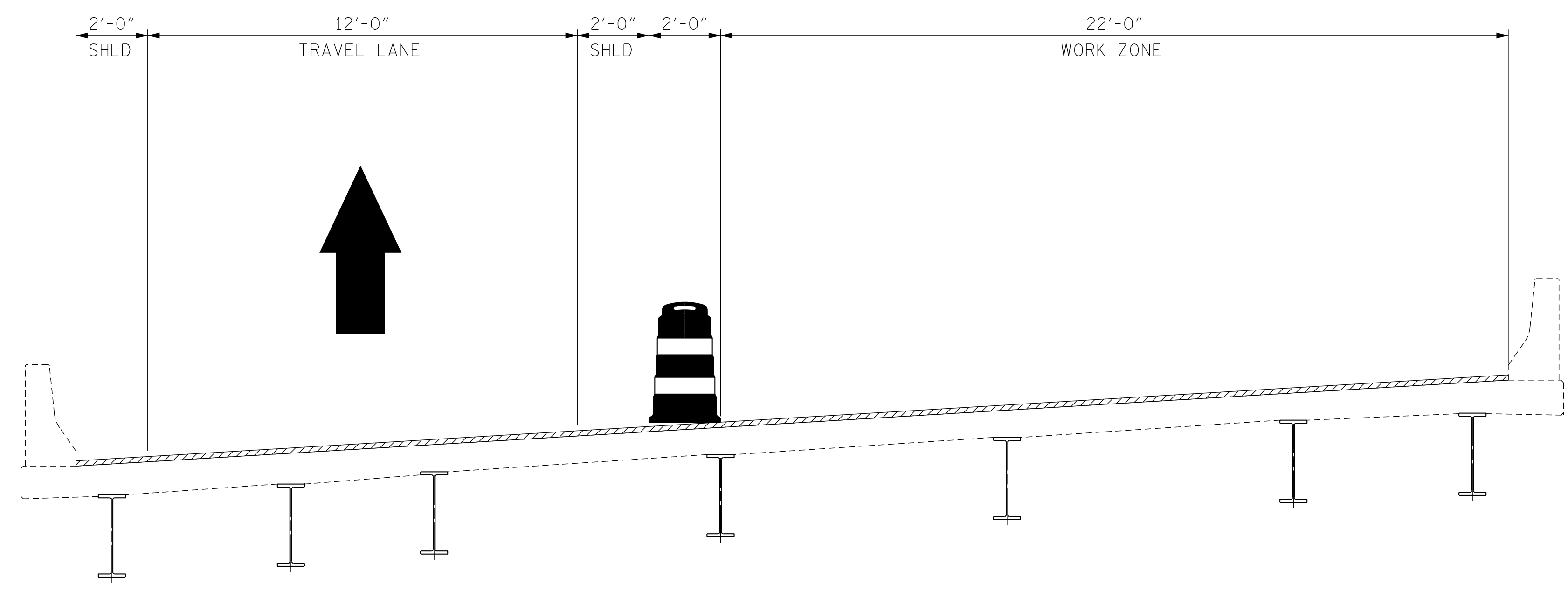
1. USE TMP-09, ROADWAY STANDARD DRAWINGS (RSD) 1101.02 SHEET 4 OF 14 AND RSD 1101.01 SHEET 1 OF 3, TO PLACE ADVANCED WARNING SIGNS AND TRAFFIC CONTROL DEVICES.
2. RECORD EXISTING PAVEMENT MARKINGS.
3. COMPLETE PHASE I BRIDGE WORK.
4. REPLACE ANY EXISTING PAVEMENT MARKINGS THAT WERE OBLITERATED DURING CONSTRUCTION.
5. REMOVE ALL TRAFFIC CONTROL DEVICES. COVER OR REMOVE ALL ADVANCED WARNING SIGNS AND RETURN TRAFFIC TO EXISTING PATTERN.

PHASE II (I-26 EB):

1. USE TMP-09, ROADWAY STANDARD DRAWINGS (RSD) 1101.02 SHEET 4 OF 14 AND RSD 1101.01 SHEET 1 OF 3, TO PLACE ADVANCED WARNING SIGNS AND TRAFFIC CONTROL DEVICES.
2. RECORD EXISTING PAVEMENT MARKINGS.
3. COMPLETE PHASE II BRIDGE WORK.
4. REPLACE ANY EXISTING PAVEMENT MARKINGS THAT WERE OBLITERATED DURING CONSTRUCTION.
5. REMOVE ALL TRAFFIC CONTROL DEVICES. COVER OR REMOVE ALL ADVANCED WARNING SIGNS AND RETURN TRAFFIC TO EXISTING PAVEMENT PATTERN.

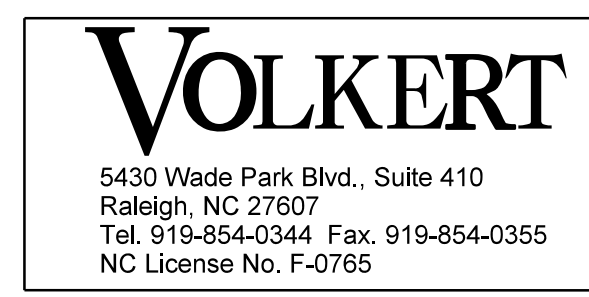


TYPICAL SECTION - PHASE I (I-26 EB)



TYPICAL SECTION - PHASE II (I-26 EB)

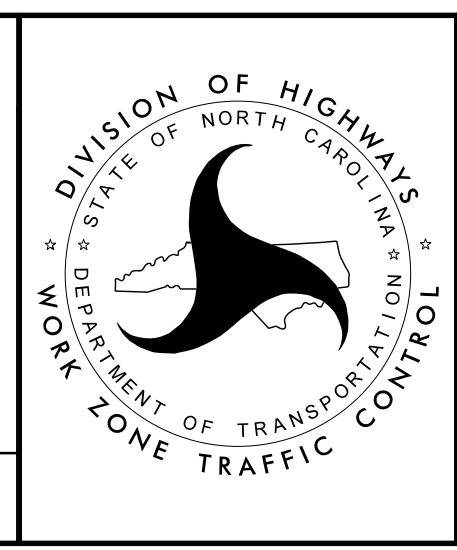
I8-JAN-2023 14:33 P:\PROJECTS\Engineering\Projects\I0420\I60 I-5927 Polk County Bridge Preservation\WZTC\I-5927 POLK.WZTC.TMP-09.dgn \$\$\$USERNAME\$\$\$



APPROVED: _____
DATE: _____

SEAL 1/19/2023
NORTH CAROLINA PROFESSIONAL ENGINEER
SEAL 48615
PATRICK N. HOLLIER
3182A238FC7473

DOCUMENT NOT CONSIDERED FINAL UNLESS ALL SIGNATURES COMPLETED



POLK COUNTY
BRIDGE 740050

TYPICAL SECTION
PHASE I & II (I-26 EB)