

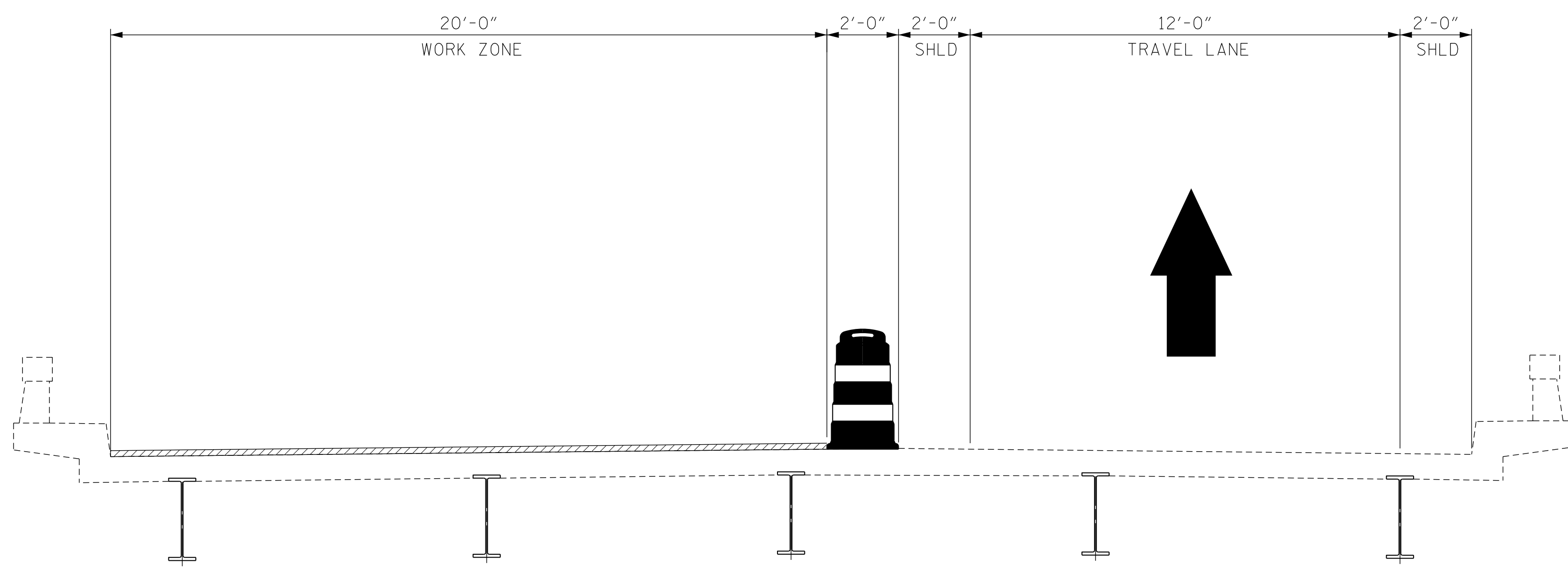
### TRAFFIC CONTROL PHASING NOTES:

#### PHASE I (I-26 EB):

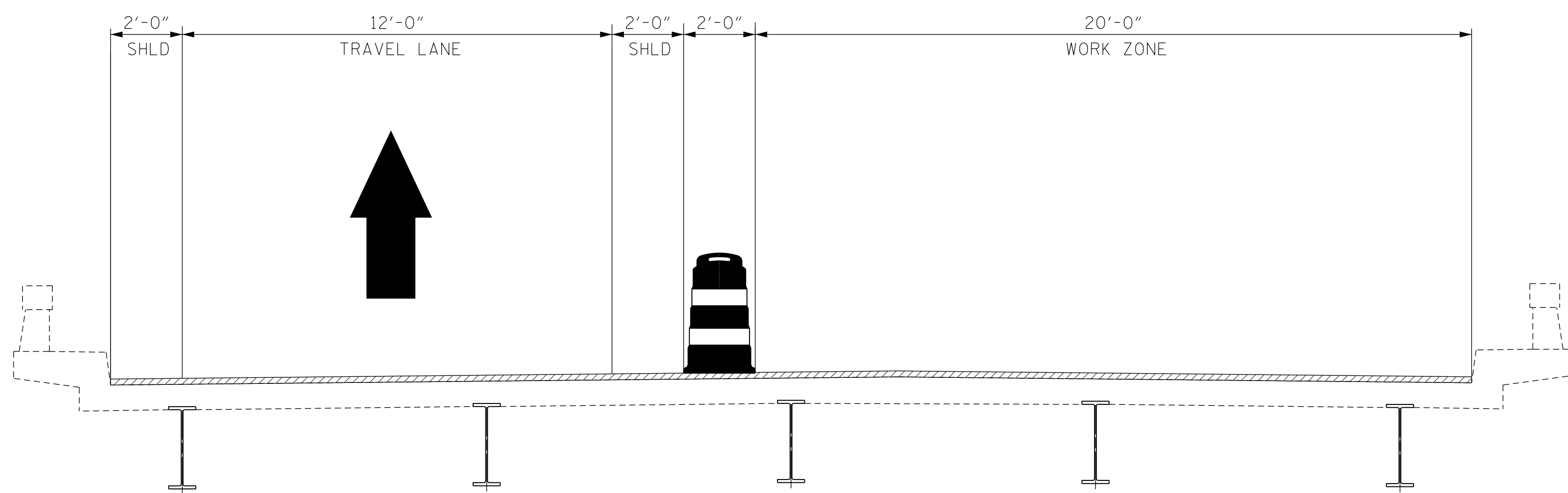
1. USE TMP-04 ROADWAY STANDARD DRAWINGS (RSD) 1101.02 SHEET 4 OF 14 AND RSD 1101.01 SHEET 1 OF 3, TO PLACE ADVANCED WARNING SIGNS AND TRAFFIC CONTROL DEVICES.
2. RECORD EXISTING PAVEMENT MARKINGS.
3. COMPLETE PHASE I BRIDGE WORK.
4. REPLACE ANY EXISTING PAVEMENT MARKINGS THAT WERE OBLITERATED DURING CONSTRUCTION.
5. REMOVE ALL TRAFFIC CONTROL DEVICES. COVER OR REMOVE ALL ADVANCED WARNING SIGNS AND RETURN TRAFFIC TO EXISTING PATTERN.

#### PHASE II (I-26 EB):

1. USE TMP-04 ROADWAY STANDARD DRAWINGS (RSD) 1101.02 SHEET 4 OF 14 AND RSD 1101.01 SHEET 1 OF 3, TO PLACE ADVANCED WARNING SIGNS AND TRAFFIC CONTROL DEVICES.
2. RECORD EXISTING PAVEMENT MARKINGS.
3. COMPLETE PHASE II BRIDGE WORK.
4. REPLACE ANY EXISTING PAVEMENT MARKINGS THAT WERE OBLITERATED DURING CONSTRUCTION.
5. REMOVE ALL TRAFFIC CONTROL DEVICES. COVER OR REMOVE ALL ADVANCED WARNING SIGNS AND RETURN TRAFFIC TO EXISTING PAVEMENT PATTERN.



TYPICAL SECTION - PHASE I (I-26 EB)



TYPICAL SECTION - PHASE II (I-26 EB)

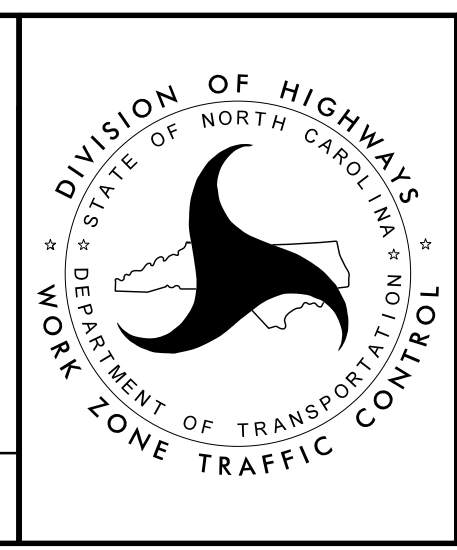
I8-JAN-2023 14:27 P:\PROJECTS\Engineering\Projects\I0420\I60 I-5927 Polk County Bridge Preservation\WZTC\I-5927 POLK.WZTC.TMP-04.dgn \$\$\$USERNAME\$\$\$

**VOLKERT**  
 5430 Wade Park Blvd., Suite 410  
 Raleigh, NC 27607  
 Tel. 919-854-0344 Fax. 919-854-0355  
 NC License No. F-0765

APPROVED: \_\_\_\_\_  
 DATE: \_\_\_\_\_

SEAL 1/19/2023  
 NORTH CAROLINA PROFESSIONAL ENGINEER  
 SEAL 48615  
 PATRICK N. HOLLIER  
 31822A38FC7473

**DOCUMENT NOT CONSIDERED FINAL  
 UNLESS ALL SIGNATURES COMPLETED**



POLK COUNTY  
 BRIDGE 740025

TYPICAL SECTION  
 PHASE I & II (I-26 EB)