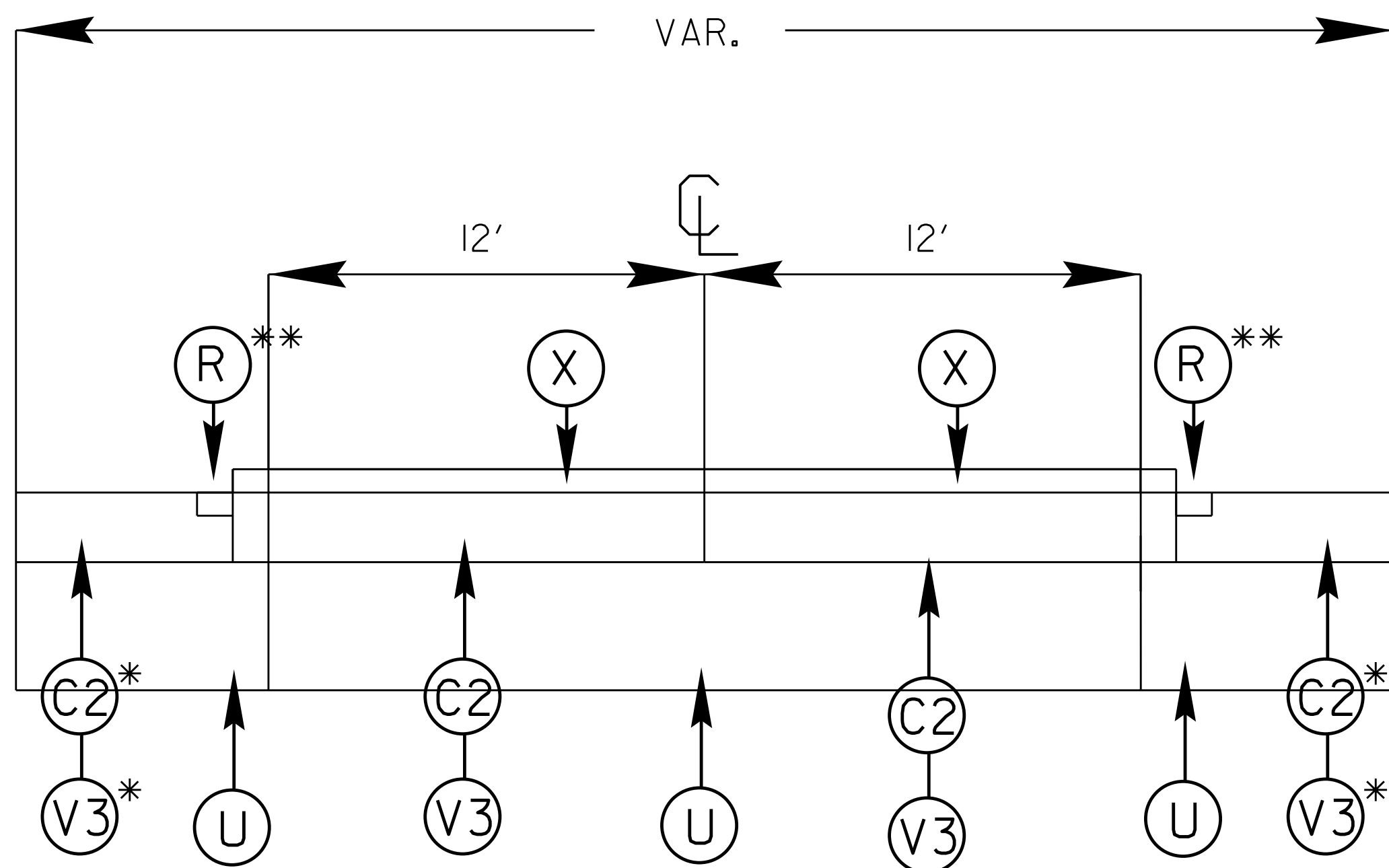


# TYPICAL 1



\* USE IN AREAS WHERE SHOULDERS HAVE EXISTING OGFC OR AS DIRECTED BY PROJECT ENGINEER

\*\* USE IN AREAS WHERE RUMBLE STRIPS WERE REMOVED OR AS DIRECTED BY PROJECT ENGINEER

\* NOTE\* QUANTITIES INCLUDE ACCELERATION/DECELERATION LANES.

## SURFACING SCHEDULE

ITEM NO	DESCRIPTION
C1	PROP. APPROX. 1 1/2" ASPHALT CONCRETE SURFACE COURSE, TYPE S9.5C AT AN AVERAGE RATE OF 168 LBS.PER.SQ.YD
C2	PROP. APPROX. 1 1/2" ASPHALT CONCRETE SURFACE COURSE, TYPE S9.5D AT AN AVERAGE RATE OF 168 LBS.PER.SQ.YD
V1	MILLED ASPHALT PAVEMENT 3/4" IN DEPTH IN LOCATIONS AS DIRECTED BY PROJECT ENGINEER
V2	MILLED ASPHALT PAVEMENT 1 1/2" IN DEPTH IN LOCATIONS AS DIRECTED BY PROJECT ENGINEER
V3	MILLED ASPHALT PAVEMENT 2-1/4" IN DEPTH IN LOCATIONS AS DIRECTED BY PROJECT ENGINEER
R	MILLED RUMBLE STRIPS AS DIRECTED BY PROJECT ENGINEER
U	EXISTING ASPHALT
X	PROP. APPROX. 3/4" OPEN GRADE FRICTION COURSE TYPE FC1 MOD AT AN AVERAGE RATE OF 90 LBS PER SQ. YD.

# TYPICAL 2

