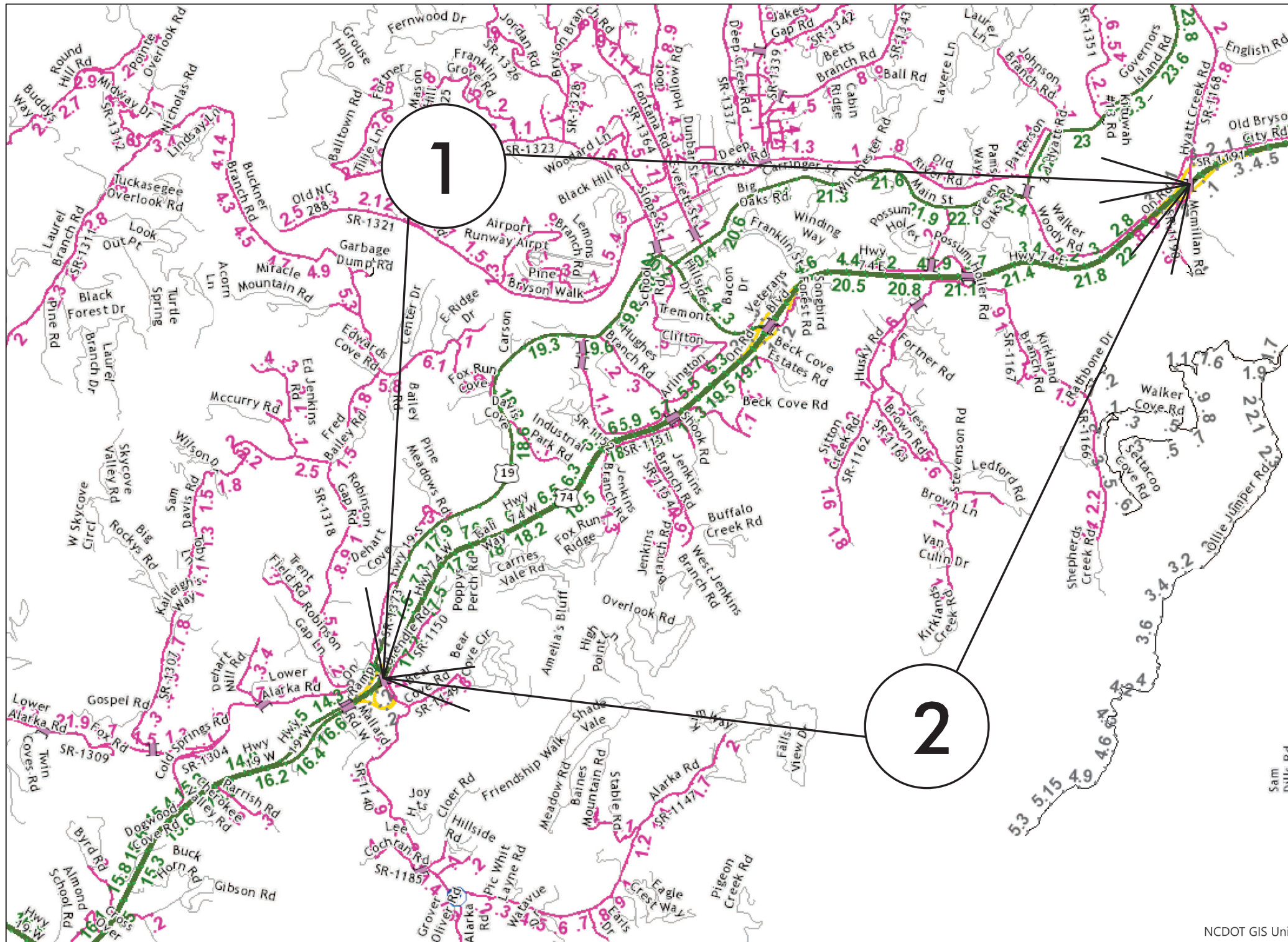


STATE	STATE PROJECT REFERENCE NO.	SHEET NO.	TOTAL SHEETS
N.C.	2023CPT.14.02.10871	1	10
STATE PROJ. NO.	F. A. PROJ. NO.	DESCRIPTION	

SWAIN COUNTY



MAP 1



BEG

END

MAP 2



BEG

END

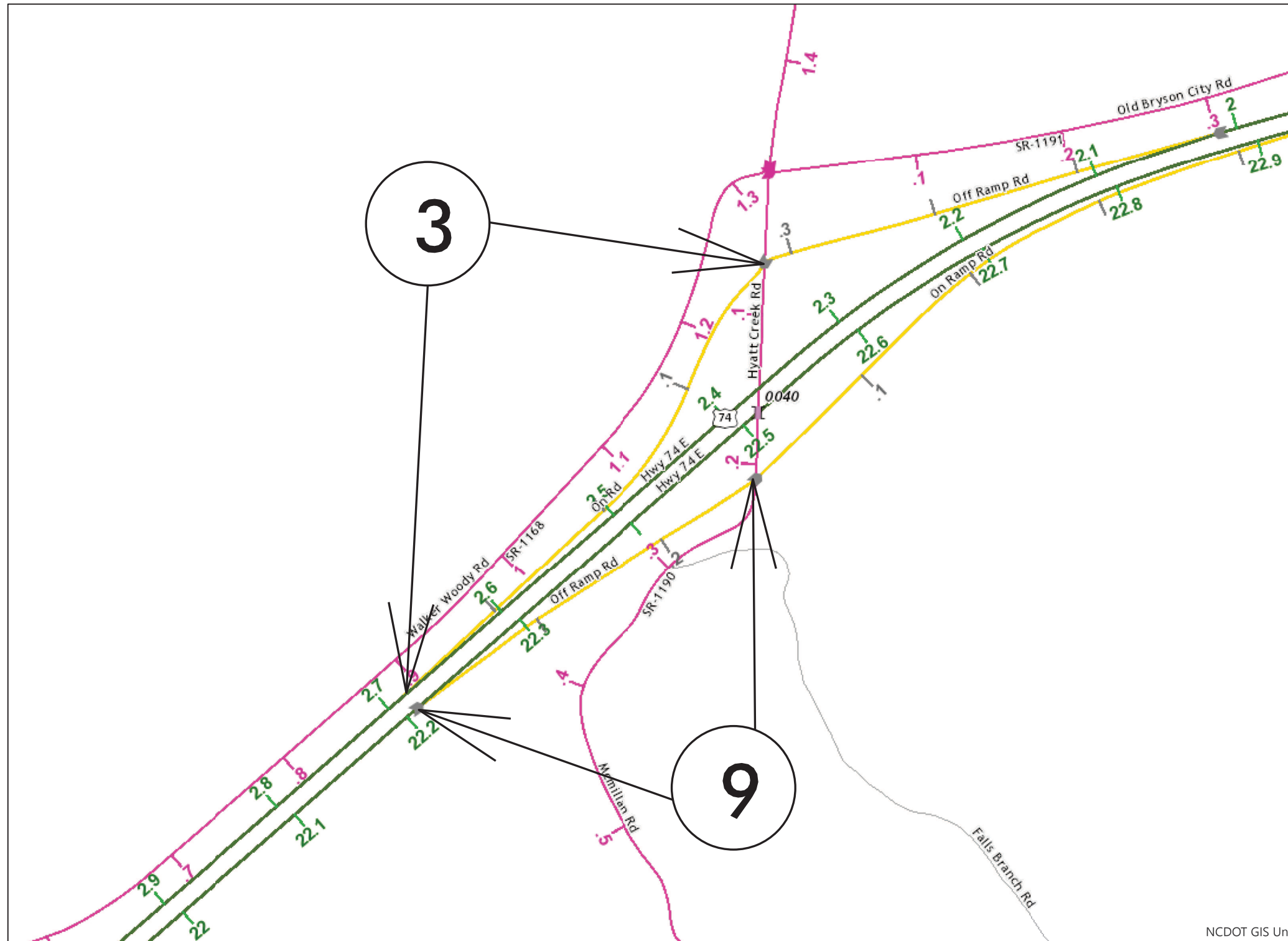
NCDOT GIS Unit

CONTRACT: C204774

09/08/20

STATE	STATE PROJECT REFERENCE NO.	SHEET NO.	TOTAL SHEETS
N.C.	2023CPT.14.02.10871	2	
STATE PROJ. NO.	F. A. PROJ. NO.	DESCRIPTION	

SWAIN COUNTY



MAP 3



BEG



END

MAP 9



BEG



END

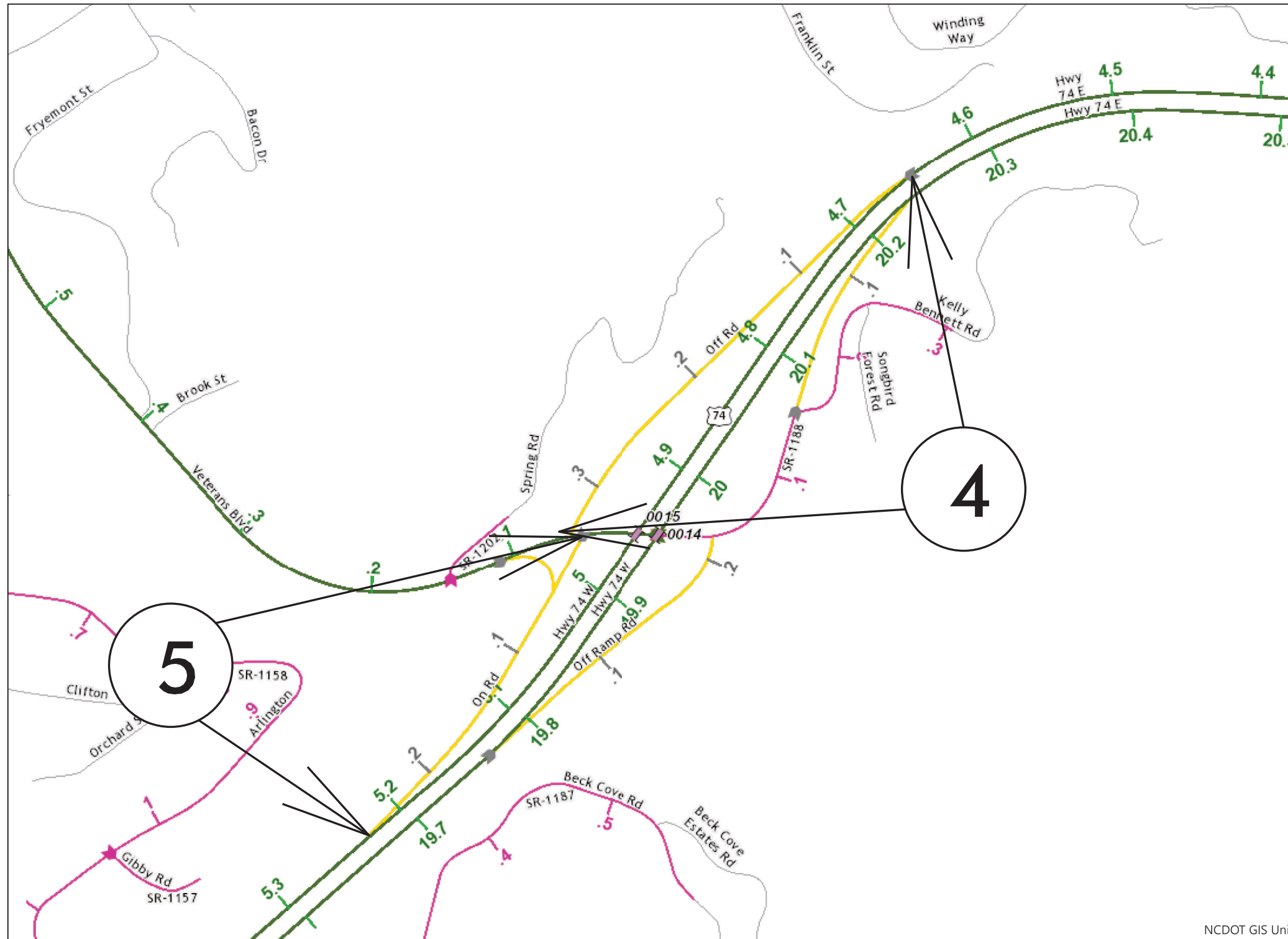
NCDOT GIS Unit

CONTRACT: C204774

09/08/09

STATE	STATE PROJECT REFERENCE NO.	SHEET NO.	TOTAL SHEETS
N.C.	2023CPT.14.02.10871	3	
STATE PROJ. NO.	F. A. PROJ. NO.	DESCRIPTION	

SWAIN COUNTY



MAP 4



BEG

END

MAP 5



BEG

END

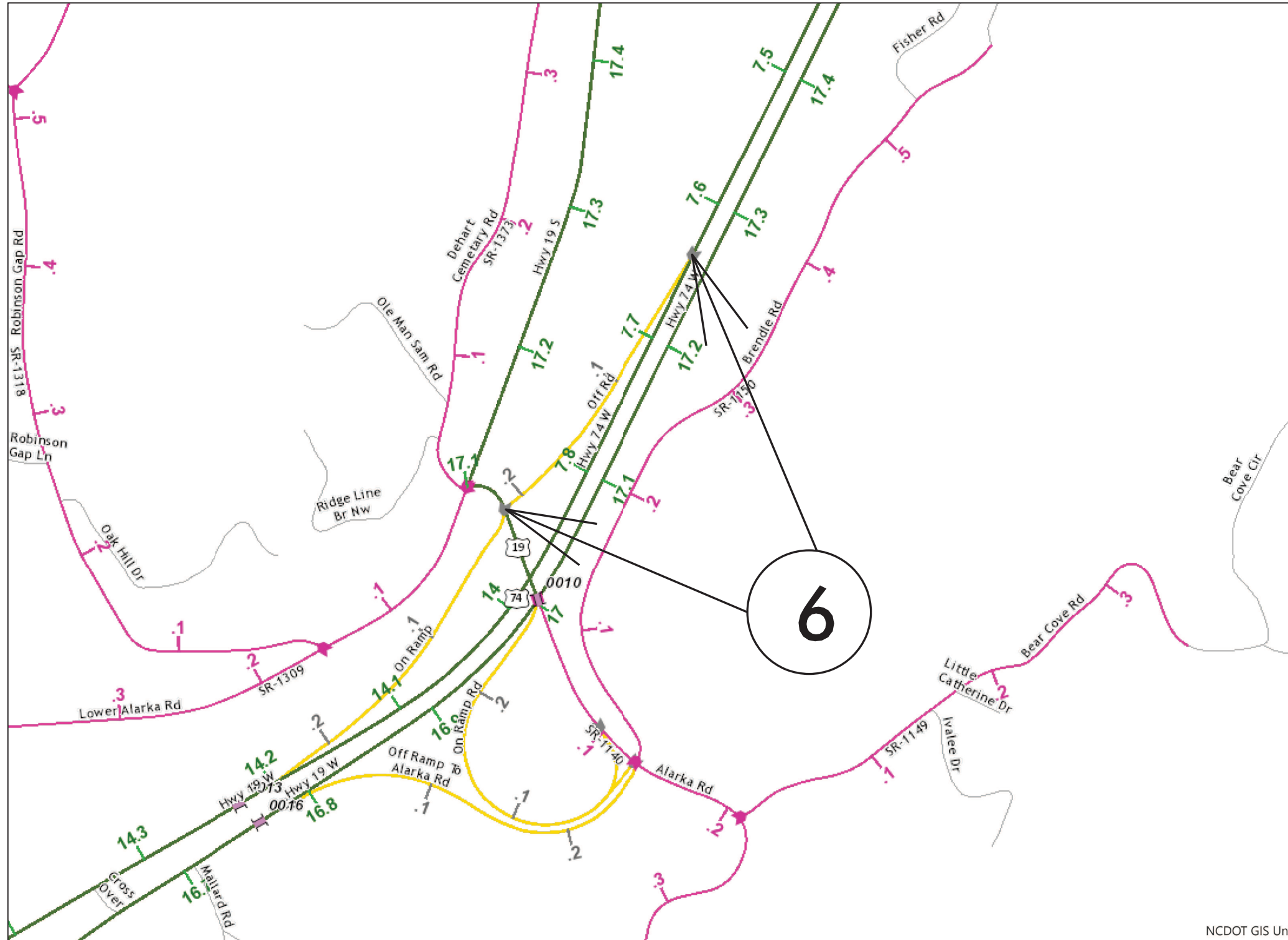
NCDOT GIS Unit

CONTRACT: C204774

09/08/09

SWAIN COUNTY

STATE	STATE PROJECT REFERENCE NO.	SHEET NO.	TOTAL SHEETS
N.C.	2023CPT.14.02.10871	4	
STATE PROJ. NO.	F. A. PROJ. NO.	DESCRIPTION	



MAP 6



BEG

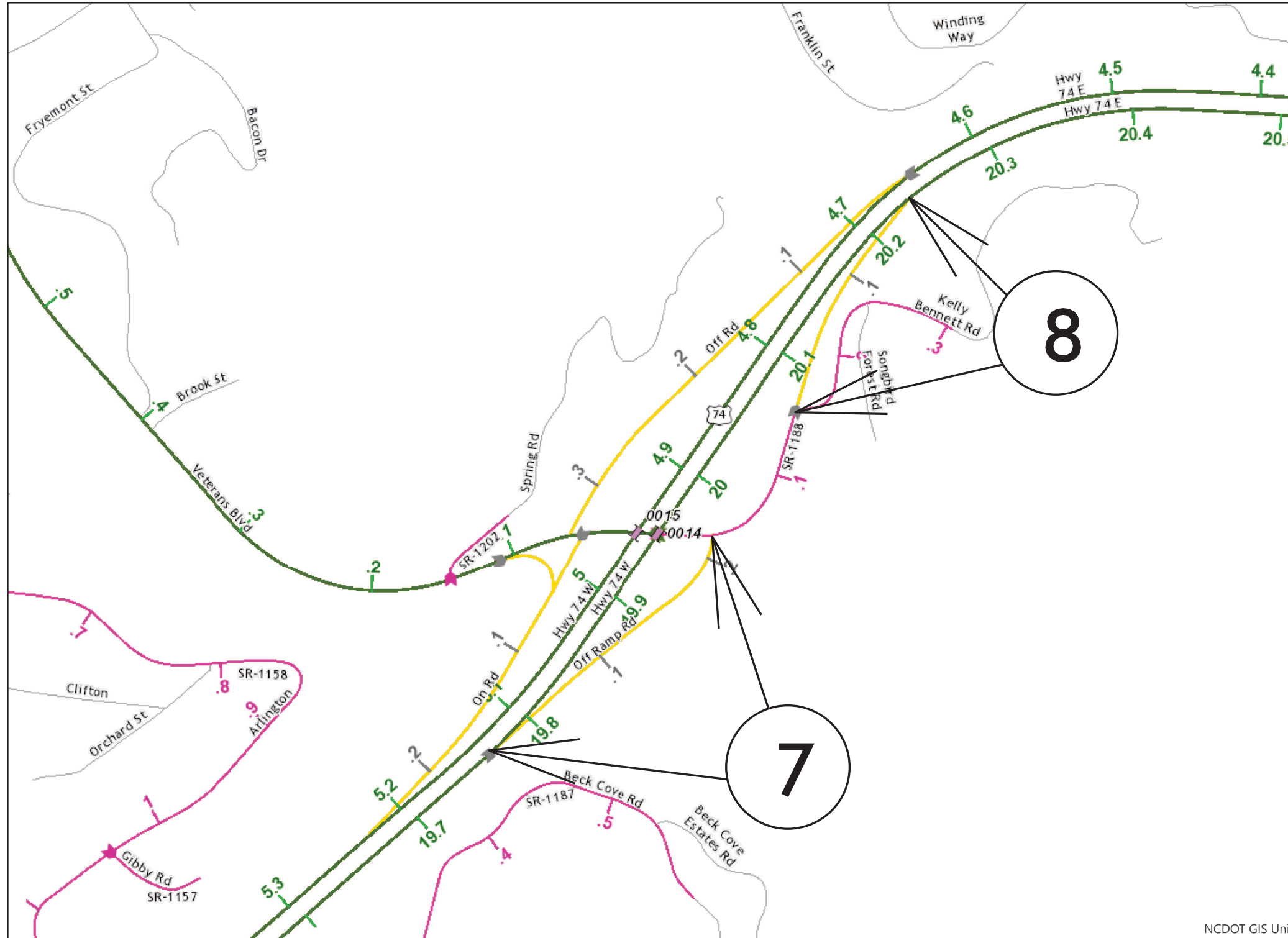


END

CONTRACT: C204774

STATE	STATE PROJECT REFERENCE NO.	SHEET NO.	TOTAL SHEETS
N.C.	2023CPT.14.02.10871	5	
STATE PROJ. NO.	F. A. PROJ. NO.	DESCRIPTION	

SWAIN COUNTY



MAP 7



BEG



END

MAP 8



BEG



END

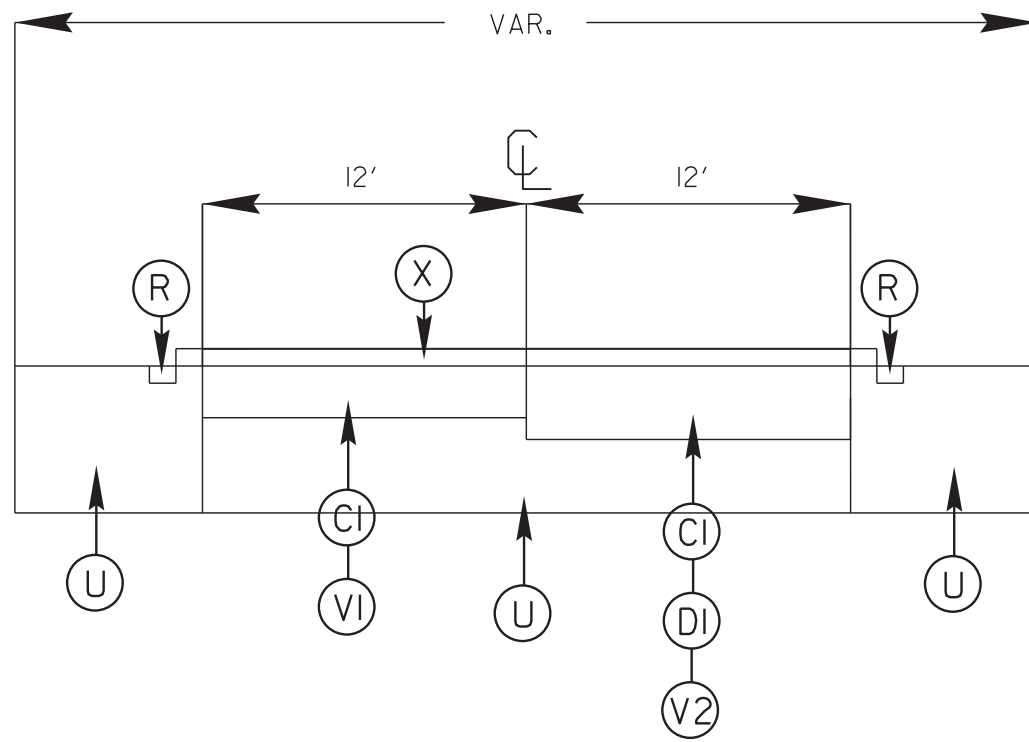
NCDOT GIS Unit

CONTRACT: C204774

09/08/09

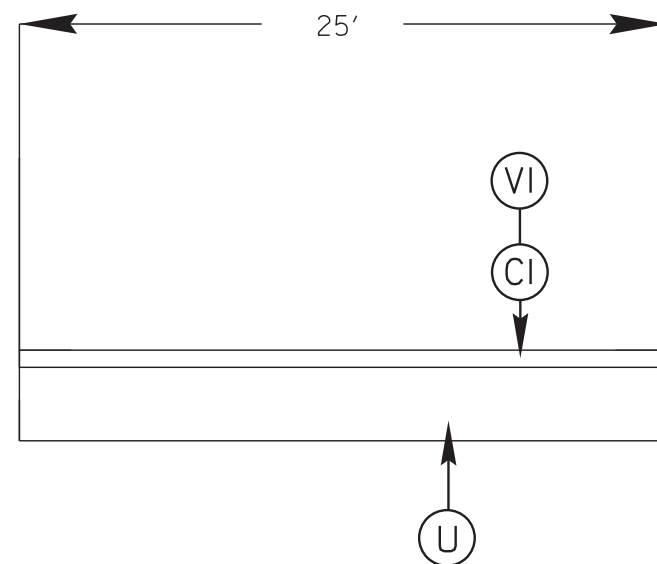
STATE	STATE PROJECT REFERENCE NO.	SHEET NO.	TOTAL SHEETS
N.C.	2023CPT.14.02.10871	6	
STATE PROJ. NO.	F. A. PROJ. NO.	DESCRIPTION	

TYPICAL 1



* NOTE *
QUANTITIES INCLUDE ACCELERATION/DECELERATION LANES.

TYPICAL 2



Bridge Milling Table

Map #	Route No.	Road Name	Structure No.	Posted SV (Tons)	Posted TTST (Tons)	Bridge Milling	Pave Across Bridge
1	US 74 West	Hwy 74 West	860019	N	N	No	No
1	US 74 West	Hwy 74 West	860015	N	N	No	*Yes
1	US 74 West	Hwy 74 West	860012	N	N	No	*Yes
2	US 74 East	Hwy 74 East	860011	N	N	No	*Yes
2	US 74 East	Hwy 74 East	860014	N	N	No	*Yes
2	US 74 East	Hwy 74 East	860018	N	N	No	No

* Ultra-Thin Bond Course Only

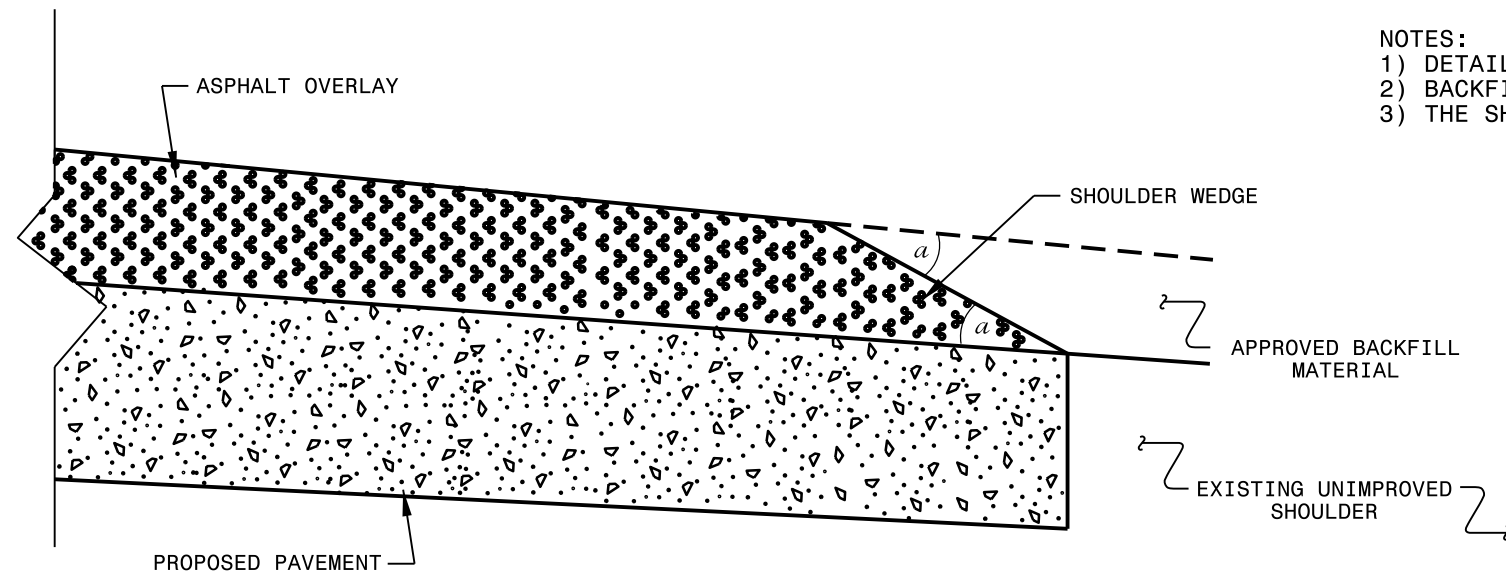
SURFACING SCHEDULE

ITEM NO	DESCRIPTION
C1	PROP. APPROX. 1 1/2" ASPHALT CONCRETE SURFACE COURSE, TYPE S9.5C AT AN AVERAGE RATE OF 168 LBS.PER.SQ.YD
D1	PROP. APPROX. 2 1/2" ASPHALT CONCRETE INTERMEDIATE COURSE, TYPE I19.0C AT AN AVERAGE RATE OF 285 LBS PER SQ.YD.
V1	MILLED ASPHALT PAVEMENT 1 1/2" IN DEPTH IN LOCATIONS AS DIRECTED BY PROJECT ENGINEER
V2	MILLED ASPHALT PAVEMENT 4" IN DEPTH IN LOCATIONS AS DIRECTED BY PROJECT ENGINEER
R	EXISTING MILLED RUMBLE STRIPS
U	EXISTING ASPHALT
X	PROP. APPROX. 3/4" ASPHALT CONCRETE ULTRA THIN BOND WEAR COURSE, AT AN AVERAGE RATE OF 75 LBS. PER SQ. YD.

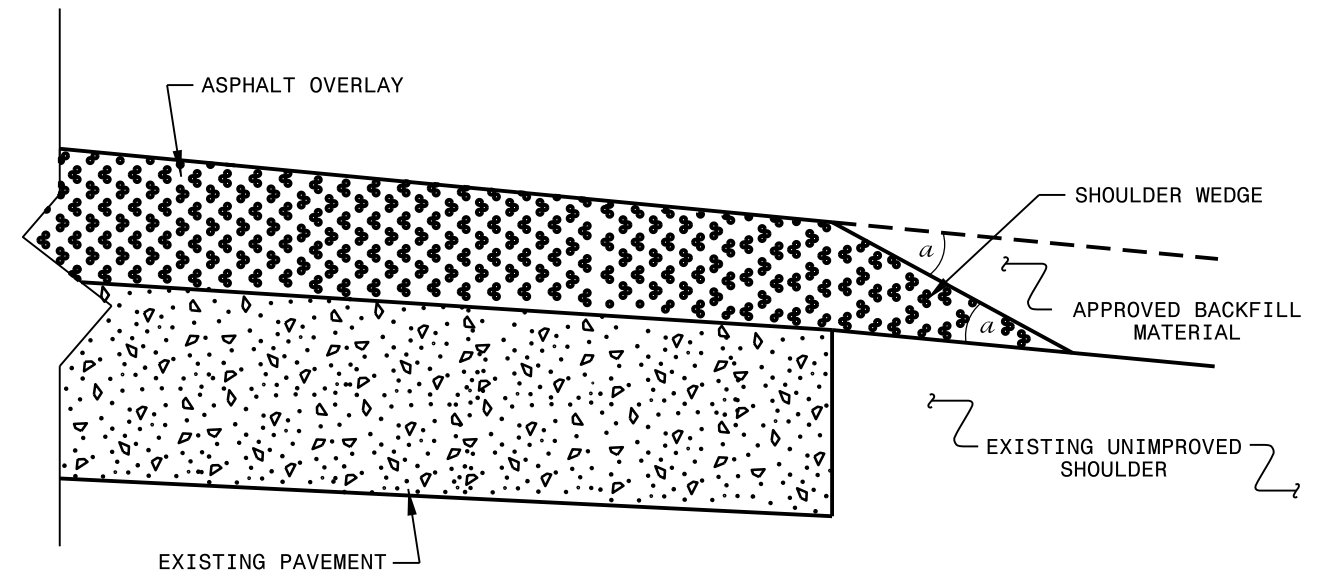
CONTRACT: C204774

09/08/09

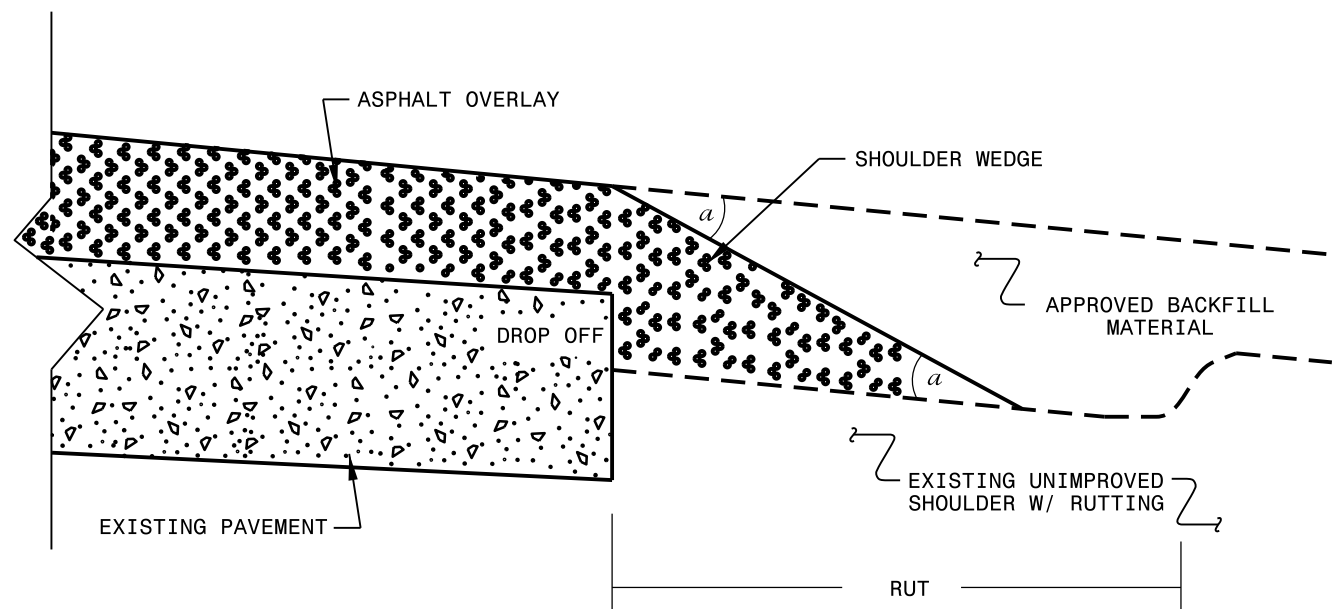
- NOTES:
 1) DETAIL DOES NOT APPLY TO OGAFc AND ULTRA-THIN BONDED WEARING COURSE.
 2) BACKFILL SHOULDER WITH APPROVED MATERIAL.
 3) THE SHOULDER WEDGE DEVICE MAY BE DISENGAGED AT PAVED DRIVEWAYS AND SIDE STREETS.



SHOULDER WEDGE DETAIL
 (Resurfacing Projects w/ Widening or
 with Existing Paved Shoulder having no dropoffs)



SHOULDER WEDGE DETAIL
 (Resurfacing Projects w/ NO Widening)



SHOULDER WEDGE DETAIL
 (Resurfacing Adjacent to
 Rutted Shoulder)

- SHOULDER WEDGE ANGLE = 30°

CONTRACT STANDARDS AND DEVELOPMENT UNIT			
Office 919-707-6950		FAX 919-250-4119	
SHOULDER WEDGE DETAILS			
ORIGINAL BY: T.SPELL	DATE: 7-19-11		
MODIFIED BY:	DATE: 10/16/12		
CHECKED BY:	DATE:		
FILE SPEC.: susr/details/stand/shoulderwedgedetail.dgn			

SYSTEM: 2011
 USER: T.SPELL
 DATE: 10/16/12

PROJECT NO.	SHEET NO.	TOTAL NO.
2023CPT.14.02.10871	8	

SUMMARY OF QUANTITIES

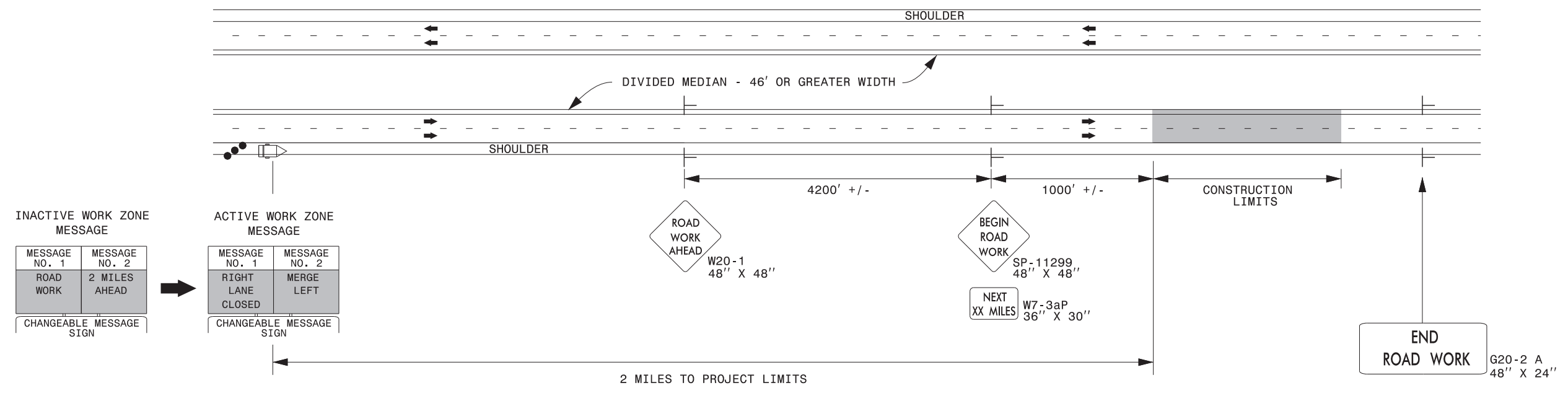
PROJECT NO	COUNTY	MAP NO	ROUTE	DESCRIPTION	TYP NO	LANES	LANE TYPE	FINAL SURFACE TESTING REQUIRED	WARM MIX ASPHALT REQUIRED	LENGTH	WIDTH	1297000000-E		1503000000-E	1523000000-E	1575000000-E	1577000000-E	1704000000-E	1839140000-E
												1½" MILLING	4" MILLING	INTERMEDIATE COURSE, I19.0C	SURFACE COURSE, S9.5C	ASPHALT BINDER FOR PLANT MIX	POLYMER MODIFIED ASPHALT BINDER FOR PLANT MIX	PATCHING EXISTING PAVEMENT	ULTRA-THIN BONDED WEARING COURSE
												MI	FT	SY	SY	TONS	TONS	TONS	TONS
2023CPT.14.02.10871	Swain	1	US 74 WEST	SR 1190 (MP 2.38) TO US 19 ALARKA RD (MP 7.88)	1	2	MD	NO	NO	5.5	32	49,488	42,592	6,070	7,735	819	180	1,325	3,471
TOTAL FOR MAP NO. 1										5.5		49,488	42,592	6,070	7,735	819	180	1,325	3,471
2023CPT.14.02.10871	Swain	2	US 74 EAST	US 19 ALARKA RD (MP 17.01) TO SR 1190 (MP 22.5)0	1	2		NO	NO	5.49	32	49,743	43,460	6,059	7,750	820	181	1,322	3,477
TOTAL FOR MAP NO. 2										5.49		49,743	43,460	6,059	7,750	820	181	1,322	3,477
2023CPT.14.02.10871	Swain	3	ON RAMP MP 69 WB	FROM SR 1190 TO US 74 W	2	2		NO	NO	0.19	24	2,948			248	15			
TOTAL FOR MAP NO. 3										0.19		2,948			248	15			
2023CPT.14.02.10871	Swain	4	OFF RAMP MP 67 WB	FROM US 74 TO US 19	2	2	MD	NO	NO	0.235	24	2,895			336	20			
TOTAL FOR MAP NO. 4										0.235		2,895			336	20			
2023CPT.14.02.10871	Swain	5	ON RAMP MP 67 WB	FROM US 19 TO US 74	2	2	MD	NO	NO	0.192	24	3,620			304	18			
TOTAL FOR MAP NO. 5										0.192		3,620			304	18			
2023CPT.14.02.10871	Swain	6	OFF RAMP MP 64 WB	FROM US 74 TO US 19 (ALARKA RD)	2	2	MD	NO	NO	0.12	24	2,169			183	11			
TOTAL FOR MAP NO. 6										0.12		2,169			183	11			
2023CPT.14.02.10871	Swain	7	OFF RAMP MP 67 EB	FROM US 74 TO SR 188 (VETRANS BLVD)	2	2	MD	NO	NO	0.14	24	2,343			197	12			
TOTAL FOR MAP NO. 7										0.14		2,343			197	12			
2023CPT.14.02.10871	Swain	8	ON RAMP MP 67 EB	FRFROM SR 188 TO US 74	2	2	MD	NO	NO	0.1	25	1,726			146	9			
TOTAL FOR MAP NO. 8										0.1		1,726			146	9			
2023CPT.14.02.10871	Swain	9	OFF RAMP MP 69 EB	FROM US 74 TO SR 1190	2	2	MD	NO	NO	0.16	24	2,681			226	14			
TOTAL FOR MAP NO. 9										0.16		2,681			226	14			
TOTAL FOR PROJ NO. 2023CPT.14.02.10871										12.127		117,613	86,052	12,129	17,125	1,738	361	2,647	6,948
GRAND TOTAL										12.127		117,613	86,052	12,129	17,125	1,738	361	2,647	6,948

PROJECT NO.	SHEET NO.	TOTAL NO.
2023CPT.14.02.10871	9	

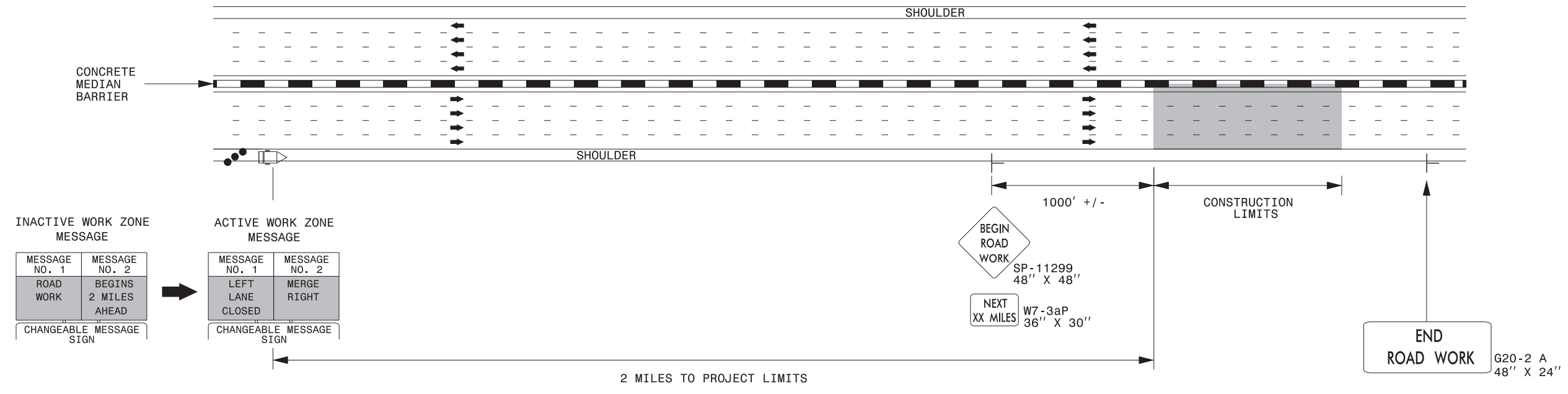
THERMOPLASTIC AND PAINT QUANTITIES

PROJECT NO	COUNTY	MAP NO	ROUTE	DESCRIPTION	TYP NO	LANES	LANE TYPE	4413000000-E	4457000000-N	4695000000-E	4700000000-E	4725000000-E	4815000000-E		4825000000-E	4890000000-E		4905100000-N				
								WORK ZONE ADVANCE/GENERAL WARNING SIGNING	TEMPORARY TRAFFIC CONTROL	8" X 90 M WHITE THERMO	12" X 90 M WHITE THERMO	ARROW 90 M RAMP ARROW	6" WHITE PAINT	6" YELLOW PAINT	12" WHITE PAINT	GENERIC PAVEMENT MARKING ITEM HOT SPRAY THERMOPLASTIC PAVEMENT MARKING LINES, 6", 50 MILS, WHITE	GENERIC PAVEMENT MARKING ITEM HOT SPRAY THERMOPLASTIC PAVEMENT MARKING LINES, 6", 50 MILS, YELLOW	NON-CAST IRON SNOWPLOWABLE PAVEMENT MARKERS				
								MI	FT	SF	LS	LF	LF	EA	LF	LF	LF	LF	LF	EA		
2023CPT.14.02.10871	Swain	1	US 74 WEST	SR 1190 (MP 2.38) TO US 19 ALARKA RD (MP 7.88)	1	2	MD	5.5	32	313												
TOTAL FOR MAP NO. 1								5.5		313												
2023CPT.14.02.10871	Swain	2	US 74 EAST	US 19 ALARKA RD (MP 17.01) TO SR 1190 (MP 22.5)0	1	2		5.49	32	313												
TOTAL FOR MAP NO. 2								5.49		313												
2023CPT.14.02.10871	Swain	3	ON RAMP MP 69 WB	FROM SR 1190 TO US 74 W	2	2		0.19	24	32												
TOTAL FOR MAP NO. 3								0.19		32												
2023CPT.14.02.10871	Swain	4	OFF RAMP MP 67 WB	FROM US 74 TO US 19	2	2	MD	0.235	24	8		490										
TOTAL FOR MAP NO. 4								0.235		8		490										
2023CPT.14.02.10871	Swain	5	ON RAMP MP 67 WB	FROM US 19 TO US 74	2	2	MD	0.192	24	32		735										
TOTAL FOR MAP NO. 5								0.192		32		735										
2023CPT.14.02.10871	Swain	6	OFF RAMP MP 64 WB	FROM US 74 TO US 19 (ALARKA RD)	2	2	MD	0.12	24	8												
TOTAL FOR MAP NO. 6								0.12		8												
2023CPT.14.02.10871	Swain	7	OFF RAMP MP 67 EB	FROM US 74 TO SR 188 (VETRANS BLVD)	2	2	MD	0.14	24	16												
TOTAL FOR MAP NO. 7								0.14		16												
2023CPT.14.02.10871	Swain	8	ON RAMP MP 67 EB	FRFROM SR 188 TO US 74	2	2	MD	0.1	25	32												
TOTAL FOR MAP NO. 8								0.1		32												
2023CPT.14.02.10871	Swain	9	OFF RAMP MP 69 EB	FROM US 74 TO SR 1190	2	2	MD	0.16	24	16												
TOTAL FOR MAP NO. 9								0.16		16												
TOTAL FOR PROJ NO. 2023CPT.14.02.10871								12.127		770	1	1,225	5,141	12	167,479	67,977	5,342	92,750	63,750	1,177		
GRAND TOTAL								12.127		770	1	1,225	5,141	12	167,479	67,977	5,342	92,750	63,750	1,177		
													235,456		156,500							

DIVIDED MEDIANS WITH WIDTHS 46' OR GREATER



DIVIDED MEDIANS WITH WIDTHS LESS THAN 46' OR WITH PERMANENT MEDIAN BARRIER

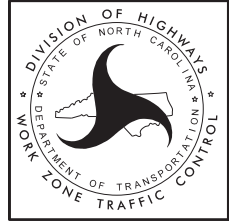


NOTES:

- 1) LATERAL CLEARANCE AT ALL SIGN LOCATIONS SHALL BE 6' AS MEASURED FROM THE EDGE OF PAVEMENT.
- 2) MOUNT SIGNS THAT ARE LARGER THAN 10 SQUARE FEET IN AREA ON TWO OR MORE WOOD OR U-CHANNEL SUPPORTS. PERFORATED SQUARE TUBING SUPPORT SYSTEMS MAY SUPPORT LARGER AREAS ON A SINGLE SUPPORT. FOLLOW MANUFACTURER'S RECOMMENDATIONS. THESE SYSTEMS SHALL BE NCHRP 350 COMPLIANT AND NCDOT APPROVED.
- 3) FOR MEDIAN WIDTHS LESS THAN 46' (MEASURED EDGELINE TO EDGELINE) USE THE BOTTOM DRAWING.
- 4) IF STATIONARY GENERAL WARNING SIGNS ARE USED, THEY WILL BE PAID FOR PER SECTION 104 OF THE NCDOT STANDARD SPECIFICATIONS AS EXTRA WORK.
- 5) INSTALL "ROAD WORK AHEAD" (W20-1) ALONG ENTRANCE RAMP 500' PRIOR TO RAMP TERMINAL, AND "END ROAD WORK" (G20-2a) AT THE END OF EXIT RAMP WITHIN THE WORK ZONE.
- 6) IF MILLED AREAS ARE NOT PAVED BACK BY THE END OF THE WORK DAY, PORTABLE SIGNS SHALL BE USED TO WARN DRIVERS OF THE PRESENT CONDITIONS. THESE ARE TO INCLUDE, BUT NOT LIMITED TO "ROUGH ROAD" W8-8, "UNEVEN LANES" W8-11, "GROOVED PAVEMENT" W8-15 w/MOTORCYCLE PLAQUE MOUNTED BELOW. THESE ARE TO BE DOUBLE INDICATED ON MULTI-LANE ROADWAYS WITH SPEED LIMITS 45 MPH AND GREATER AND WITH DIVIDED MEDIANS OF 46' OR GREATER. THESE PORTABLE SIGNS ARE INCIDENTAL TO THE OTHER ITEMS OF WORK INCLUDED IN THE TEMPORARY TRAFFIC CONTROL (LUMP SUM) PAY ITEM.

LEGEND

- CHANGEABLE MESSAGE SIGN (CMS)
- STATIONARY SIGN
- DIRECTION OF TRAFFIC FLOW
- TRAFFIC DRUM



**RESURFACING ADVANCE
WARNING SIGNS FOR
HIGH SPEED FACILITIES
≥ 60 MPH**

3/23/2015 C:\Users\rmgarrrett\Downloads\Resurfacing_AdvWarn_HSpd.dgn User:rmgarrrett