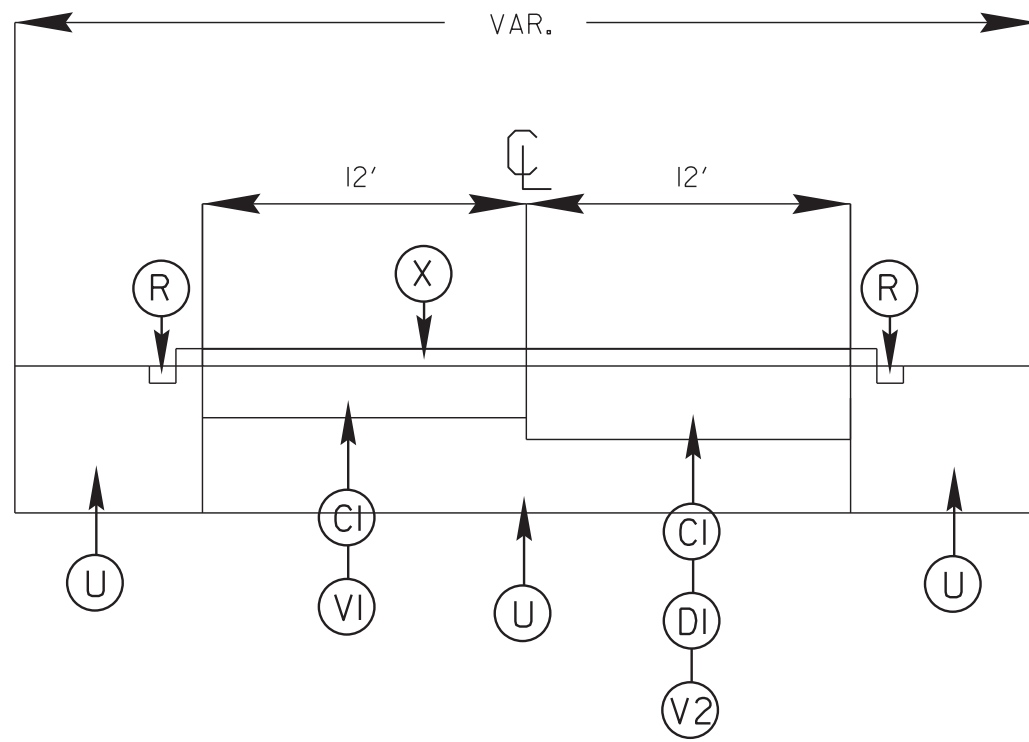


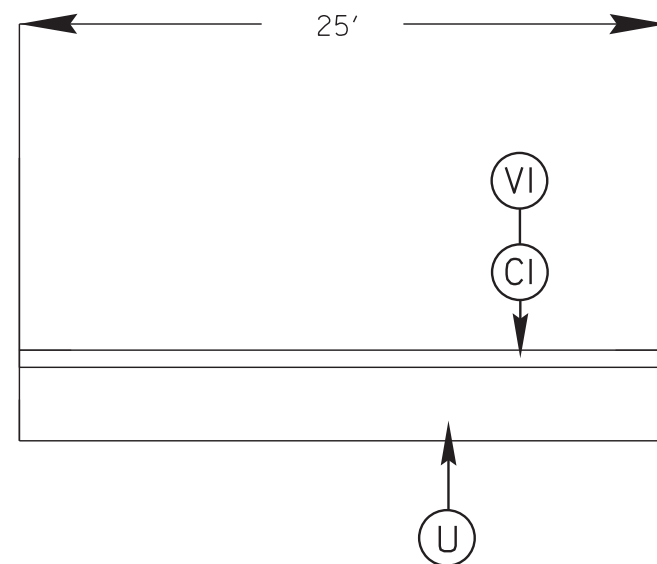
STATE	STATE PROJECT REFERENCE NO.	SHEET NO.	TOTAL SHEETS
N.C.	2023CPT.14.02.10871	6	
STATE PROJ. NO.	F. A. PROJ. NO.	DESCRIPTION	

TYPICAL 1



* NOTE *
QUANTITIES INCLUDE ACCELERATION/DECELERATION LANES.

TYPICAL 2



Bridge Milling Table

Map #	Route No.	Road Name	Structure No.	Posted SV (Tons)	Posted TTST (Tons)	Bridge Milling	Pave Across Bridge
1	US 74 West	Hwy 74 West	860019	N	N	No	No
1	US 74 West	Hwy 74 West	860015	N	N	No	*Yes
1	US 74 West	Hwy 74 West	860012	N	N	No	*Yes
2	US 74 East	Hwy 74 East	860011	N	N	No	*Yes
2	US 74 East	Hwy 74 East	860014	N	N	No	*Yes
2	US 74 East	Hwy 74 East	860018	N	N	No	No

* Ultra-Thin Bond Course Only

SURFACING SCHEDULE

ITEM NO	DESCRIPTION
C1	PROP. APPROX. 1 1/2" ASPHALT CONCRETE SURFACE COURSE, TYPE S9.5C AT AN AVERAGE RATE OF 168 LBS.PER.SQ.YD
D1	PROP. APPROX. 2 1/2" ASPHALT CONCRETE INTERMEDIATE COURSE, TYPE I19.0C AT AN AVERAGE RATE OF 285 LBS PER SQ.YD.
V1	MILLED ASPHALT PAVEMENT 1 1/2" IN DEPTH IN LOCATIONS AS DIRECTED BY PROJECT ENGINEER
V2	MILLED ASPHALT PAVEMENT 4" IN DEPTH IN LOCATIONS AS DIRECTED BY PROJECT ENGINEER
R	EXISTING MILLED RUMBLE STRIPS
U	EXISTING ASPHALT
X	PROP. APPROX. 3/4" ASPHALT CONCRETE ULTRA THIN BOND WEAR COURSE, AT AN AVERAGE RATE OF 75 LBS. PER SQ. YD.

CONTRACT: C204774

09/08/09