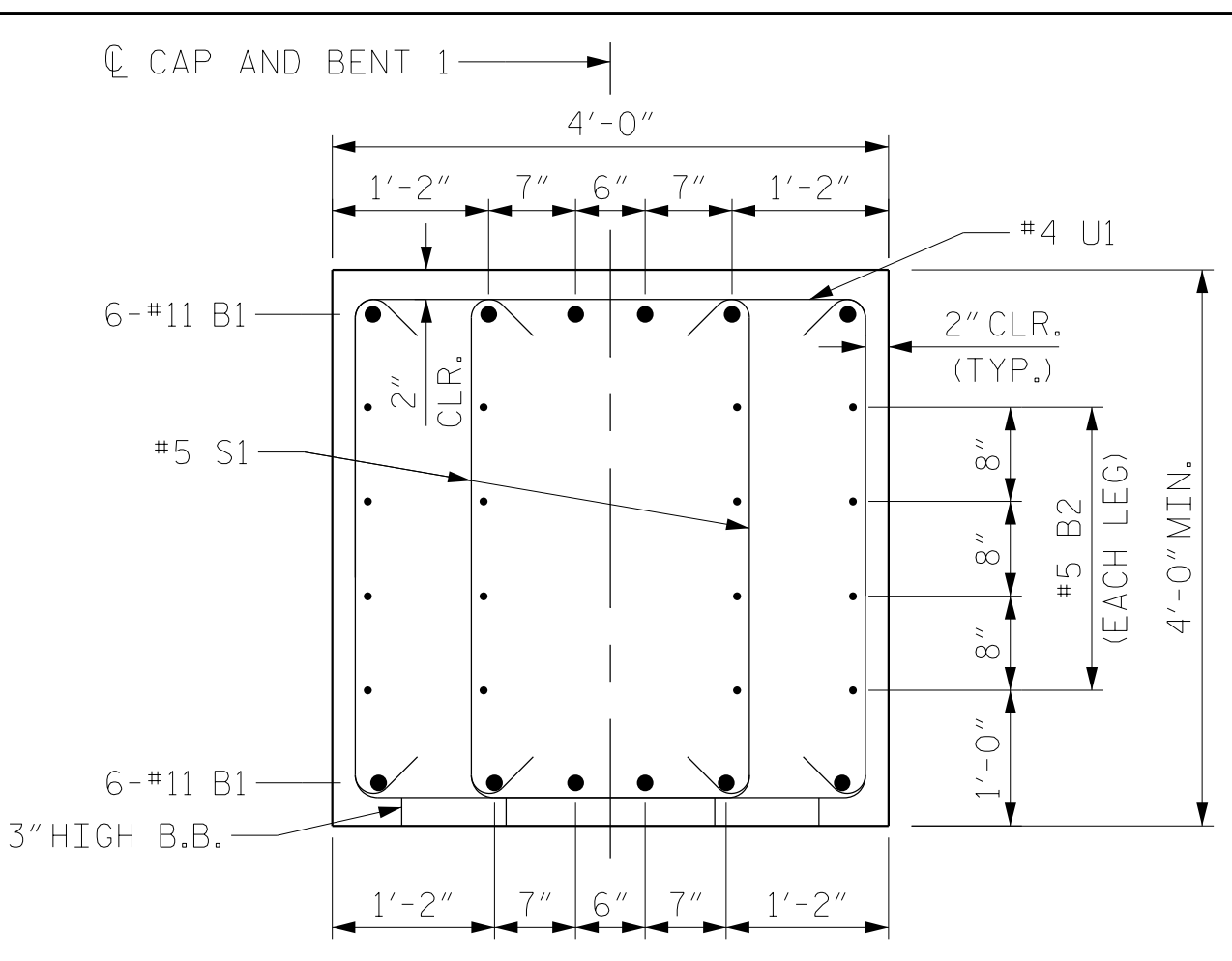
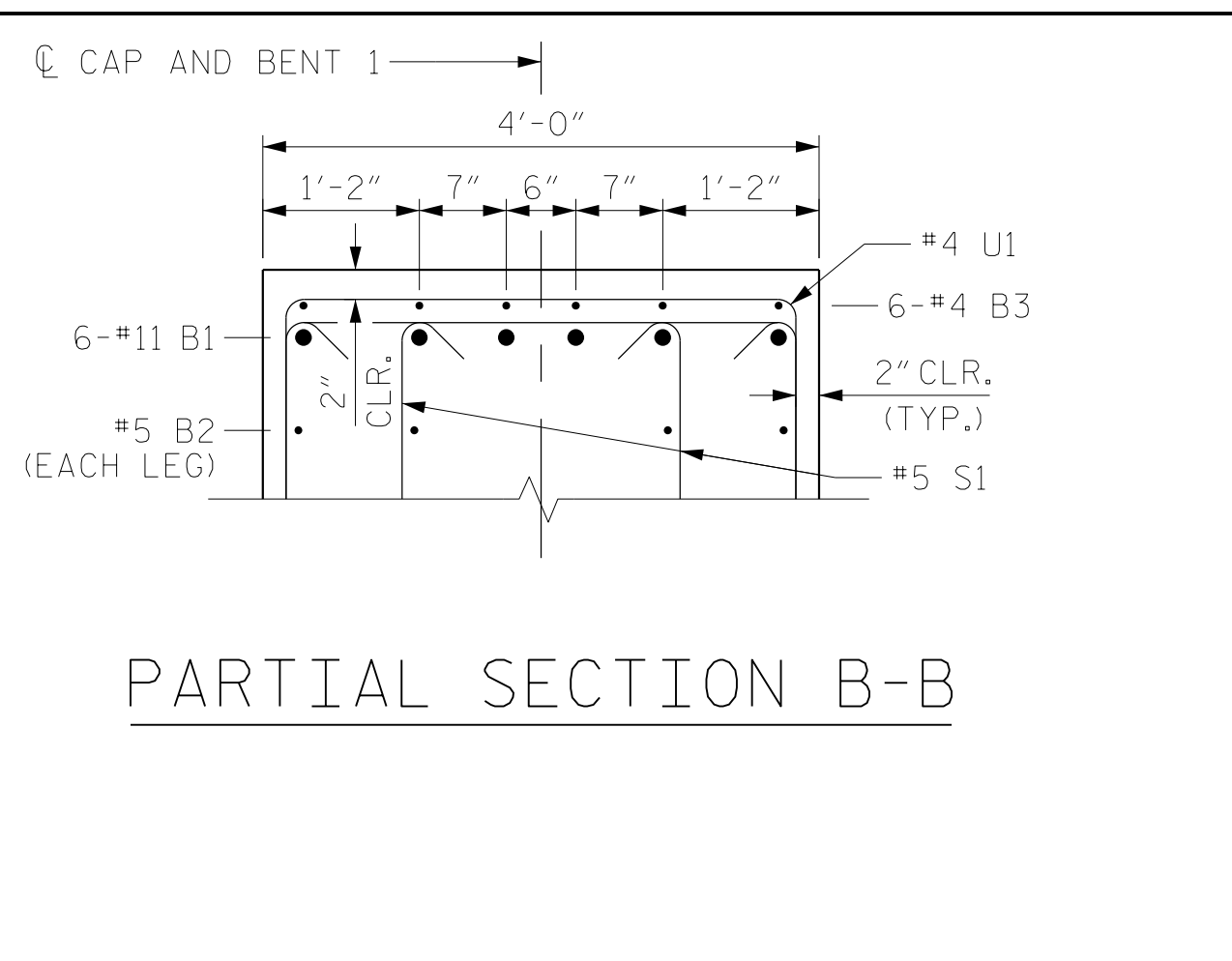


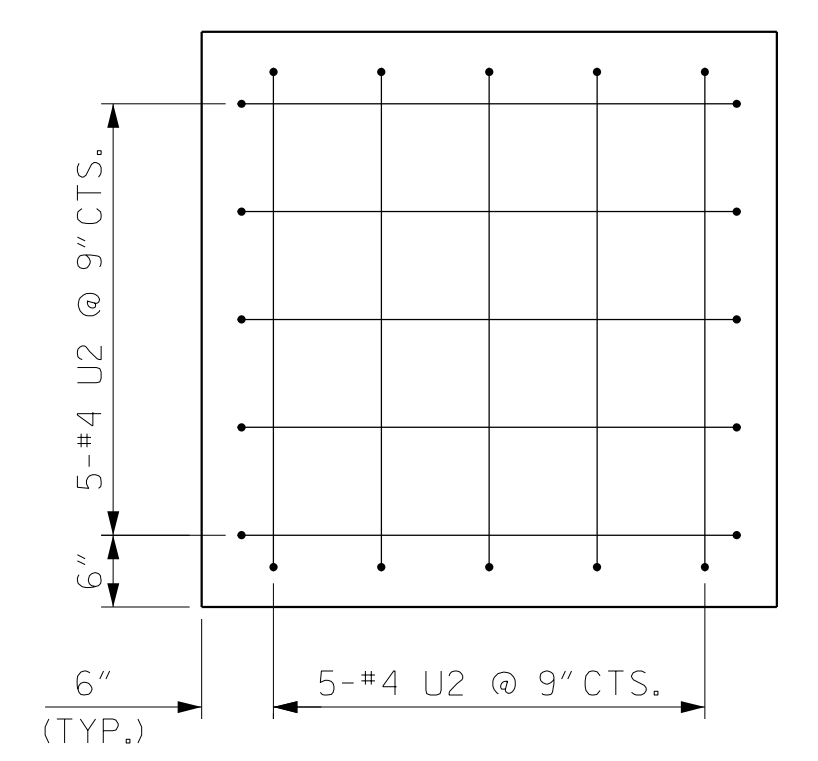
END ELEVATION
 T.O.F. = TOP OF FOOTING
 B.O.F. = BOTTOM OF FOOTING
 T.L. = TOP LAYER
 B.L. = BOTTOM LAYER



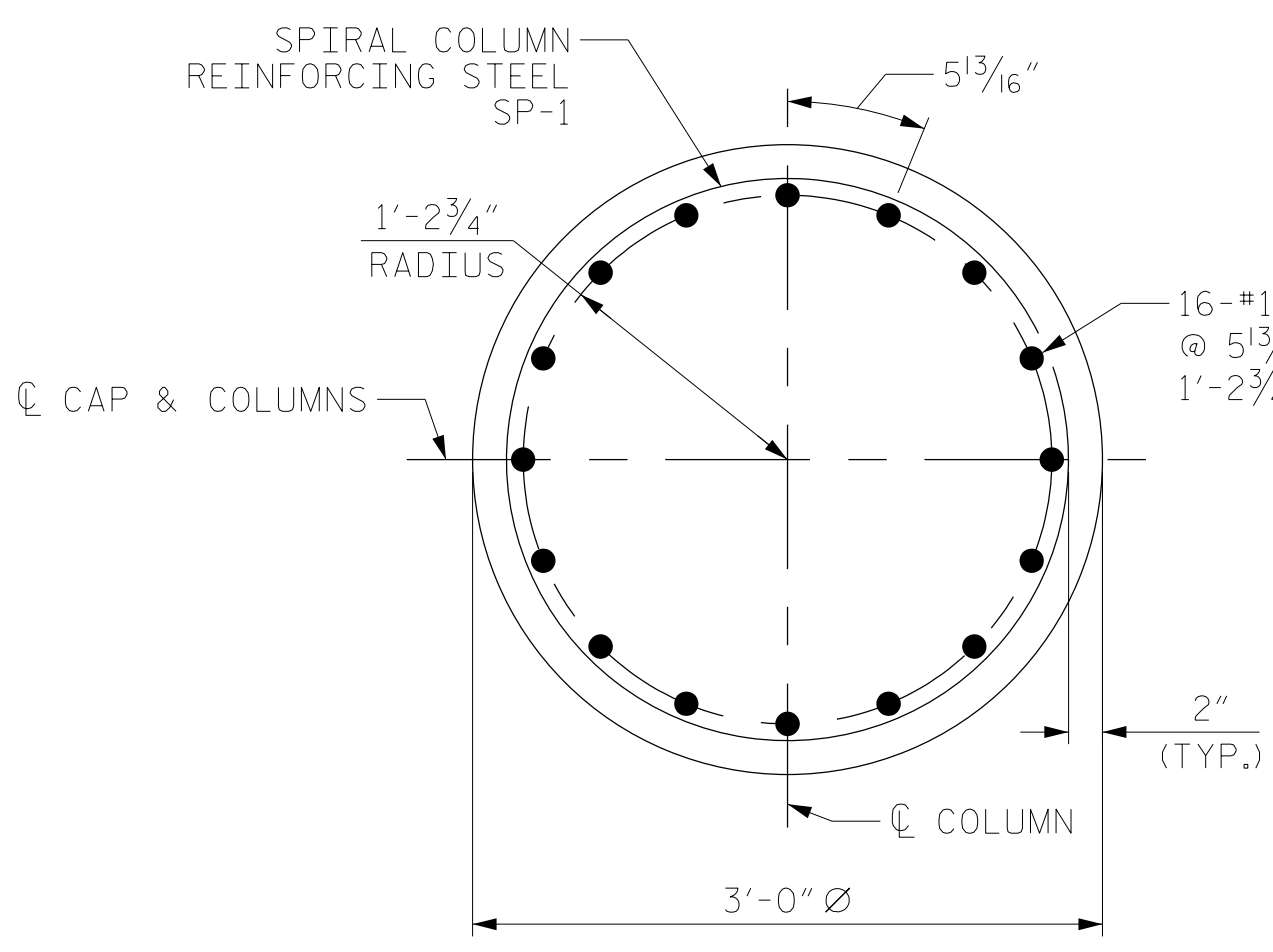
SECTION A-A



PARTIAL SECTION B-B

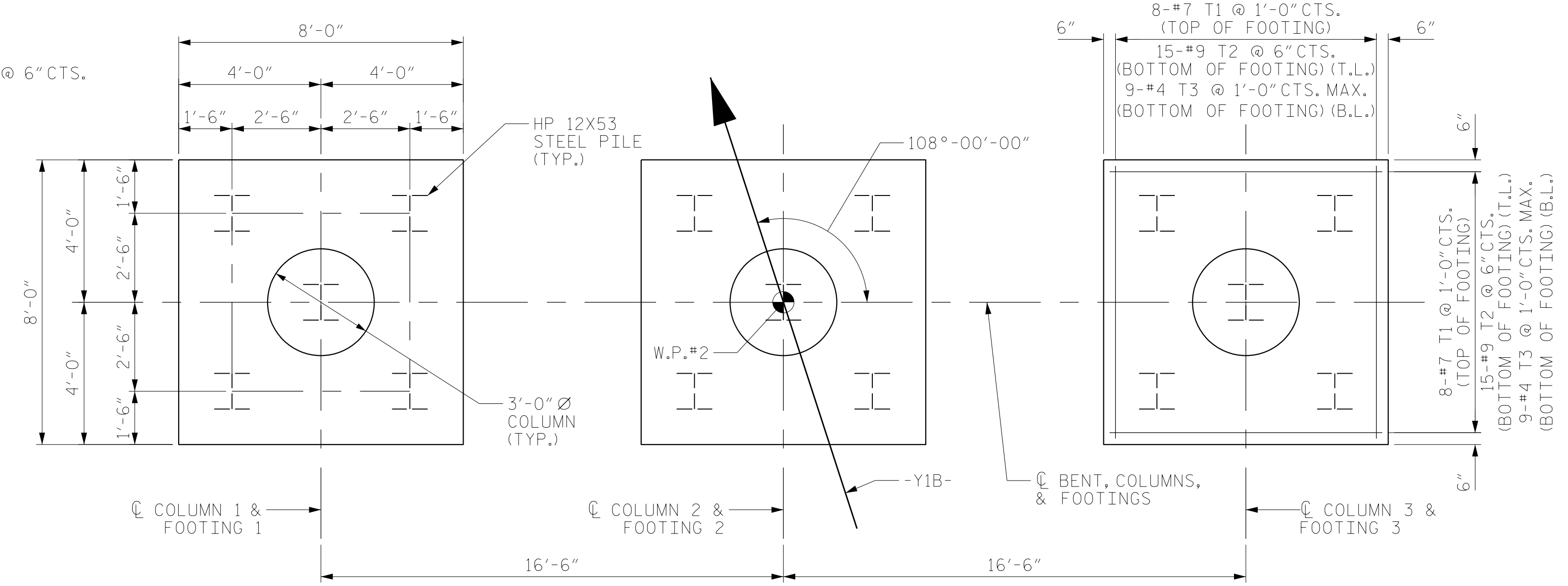


VIEW C-C



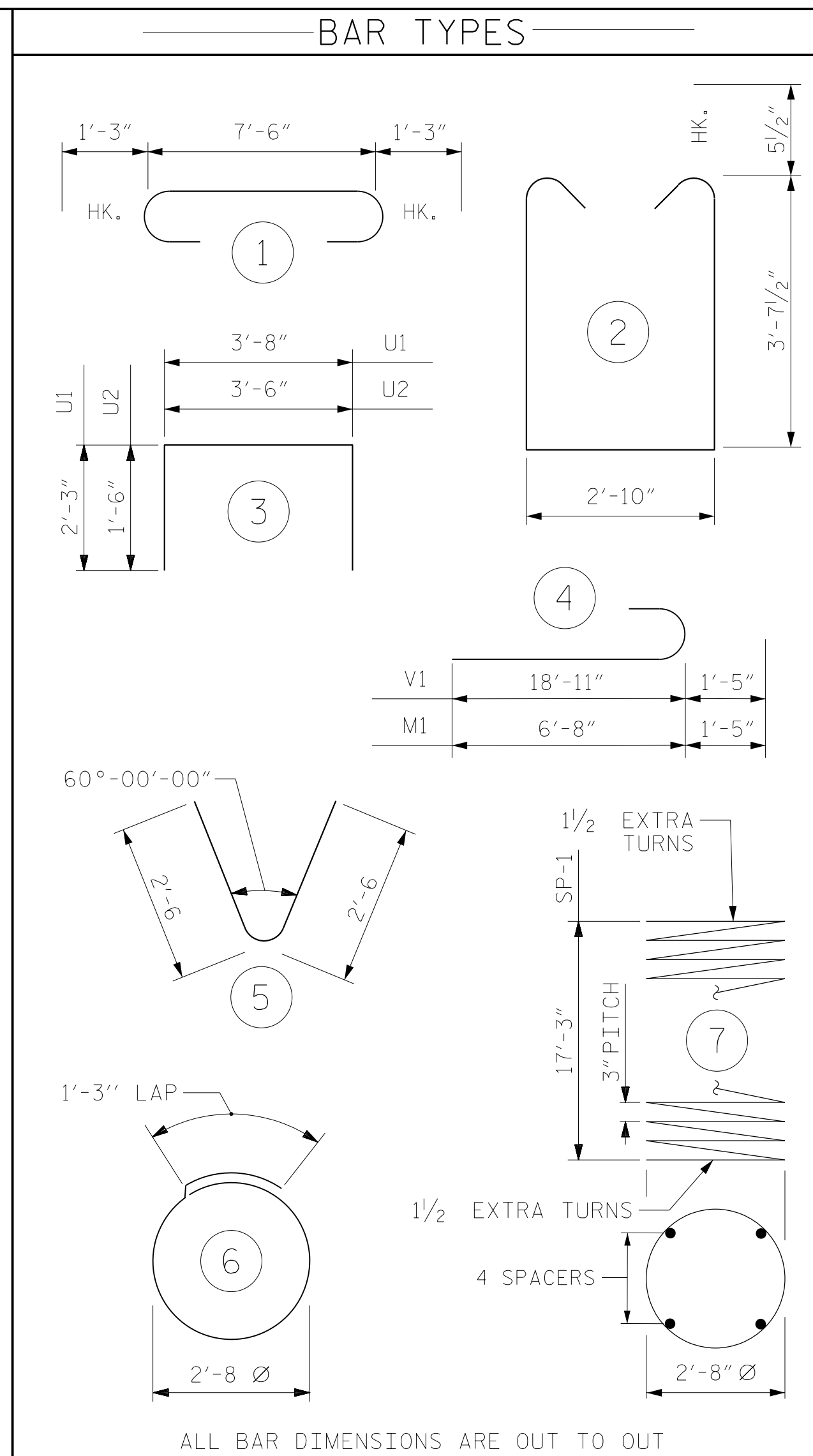
COLUMN SECTION

DIMENSIONS OF REINFORCING STEEL ARE TYPICAL FOR EACH COLUMN



PLAN OF FOOTINGS

ALL DIMENSIONS AND REINFORCING STEEL ARE TYPICAL FOR EACH FOOTING.
 HOOKS ON #9 T2 BARS NOT SHOWN FOR CLARITY.
 #4 T3 BARS SHALL BE TRIMMED AS NECESSARY AROUND PILES TO MAINTAIN 3" CLR.
 T.L. = TOP LAYER
 B.L. = BOTTOM LAYER



ALL BAR DIMENSIONS ARE OUT TO OUT

BILL OF MATERIAL					
BENT 1					
BAR	NO.	SIZE	TYPE	LENGTH	WEIGHT
B1	12	#11	STR	42'-8"	2720
B2	16	#5	STR	42'-8"	712
B3	6	#4	STR	23'-8"	95
M1	48	#10	4	8'-1"	1670
S1	108	#5	2	11'-0"	1239
S2	33	#4	6	9'-8"	213
T1	48	#7	STR	7'-6"	736
T2	90	#9	1	10'-0"	3060
T3	54	#4	STR	7'-6"	271
U1	52	#4	3	8'-2"	284
U2	20	#4	3	6'-6"	87
V1	48	#10	4	20'-4"	4200
V2	30	#7	5	5'-0"	307

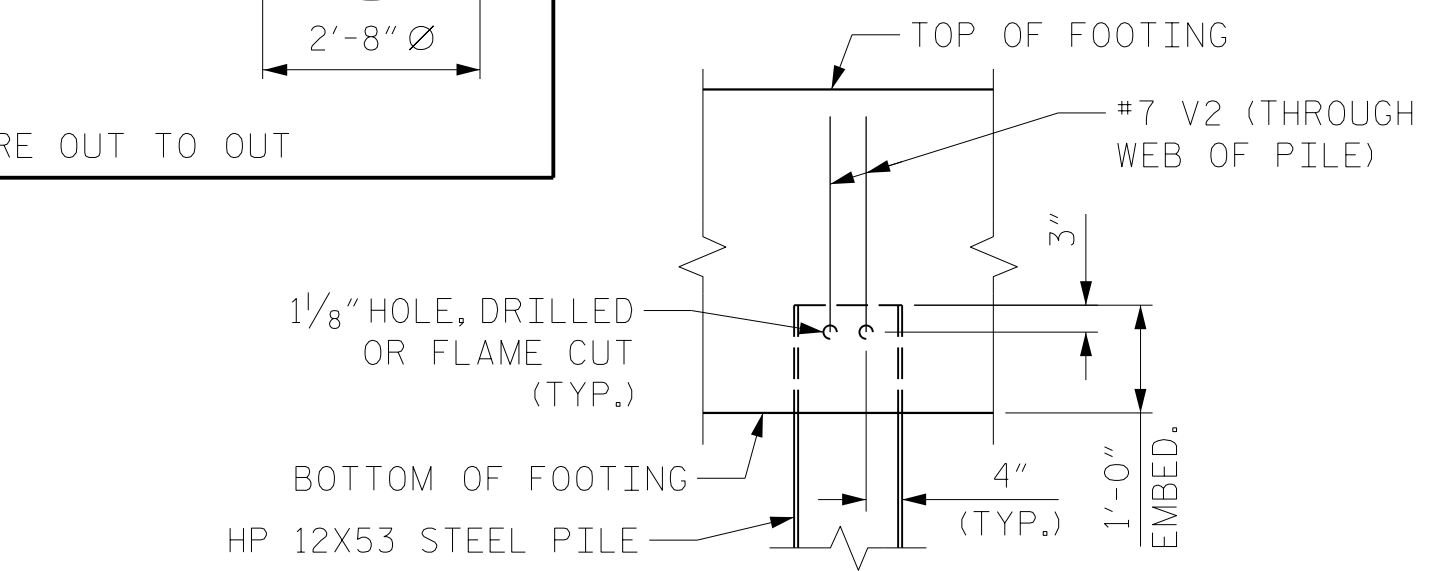
REINFORCING STEEL 15,594 LBS.

SP-1	3	*	7	591'-8"	1851
------	---	---	---	---------	------

SPIRAL COLUMN REINFORCING STEEL 1,851 LBS.

* THE SP-1 SPIRAL REINFORCING STEEL SHALL BE W31 OR D31 COLD DRAWN WIRE OR #5 PLAIN OR DEFORMED BAR.

CLASS A CONCRETE BREAKDOWN					
POUR #1 (FOOTINGS)					24.9 C.Y.
POUR #2 (COLUMNS)					13.4 C.Y.
POUR #3 (CAP)					26.5 C.Y.
TOTAL CLASS A CONCRETE					64.8 C.Y.
FOUNDATION EXCAVATION					LUMP SUM



PILE DETAIL

OTHER REINFORCING IN FOOTING NOT SHOWN FOR CLARITY (TYP. EA. PILE)

SPAN B

SPAN A

PROJECT NO. R-5751
 ROBESON COUNTY
 STATION: 37+99.89 -Y1B-

SHEET 2 OF 2

RS&H
 RS&H Architects-Engineers-Planners, Inc.
 8521 Six Forks Road, Suite 400
 Raleigh, NC 27615
 919-926-4100 FAX 919-846-9080
 www.rsandh.com
 North Carolina License No. 00737-5403-C&E

DEPARTMENT OF TRANSPORTATION					
RALEIGH					
SUBSTRUCTURE					
BENT 1					
DETAILS					
REVISIONS		SHEET NO.			
NO.	BY:	DATE:	NO.	BY:	DATE:
1			3		
2			4		
TOTAL SHEETS					28

DRAWN BY :	NSC	DATE :	10/20/2021
CHECKED BY :	MRA	DATE :	11/20/2021
DESIGN ENGINEER OF RECORD:	MKO	DATE :	10/20/2022

DOCUMENT NOT CONSIDERED FINAL UNLESS ALL SIGNATURES COMPLETED