

PLAN OF BARRIER RAIL

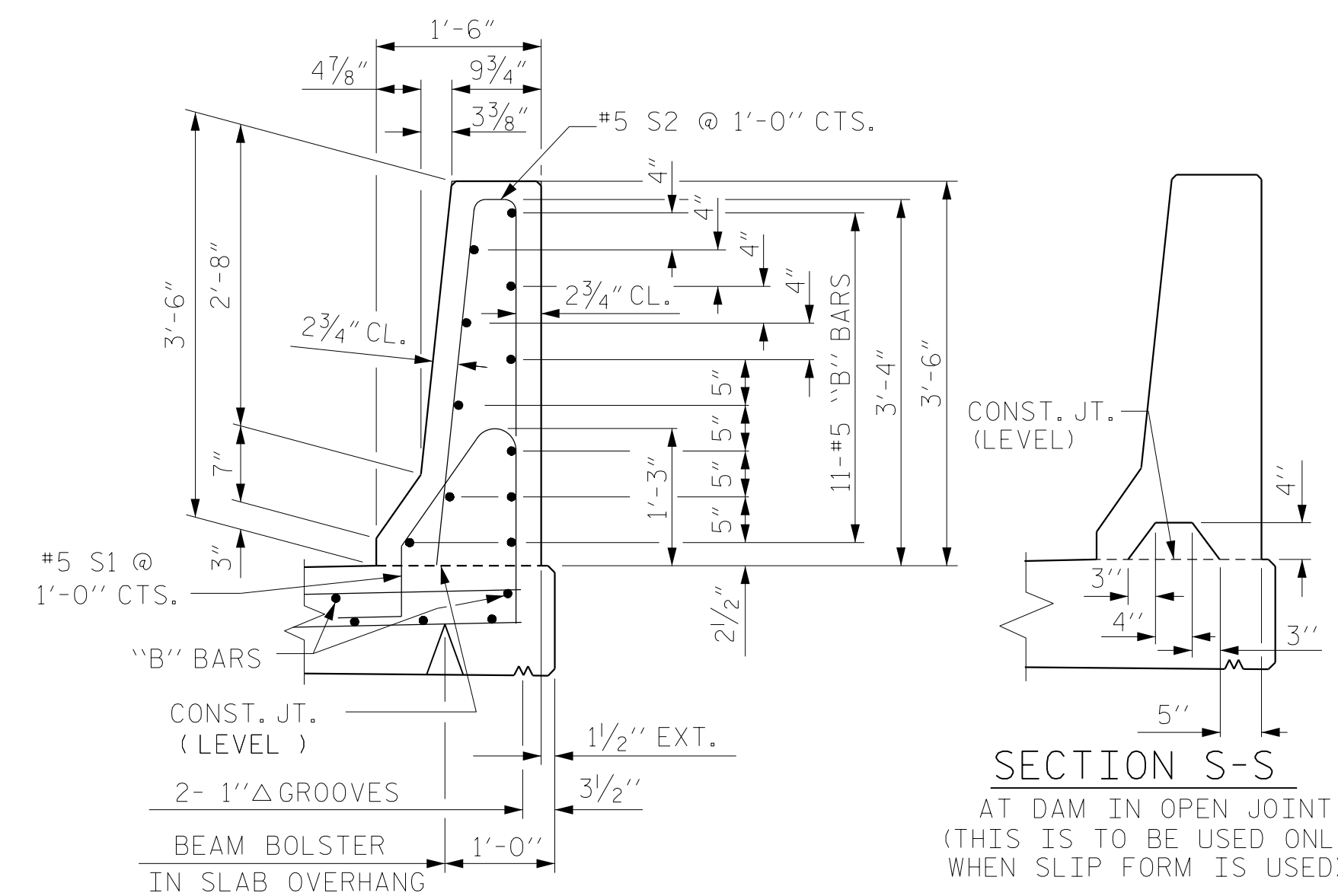
NOTES

THE BARRIER RAIL IN EACH SPAN SHALL NOT BE CAST UNTIL ALL SLAB CONCRETE IN THAT SPAN HAS BEEN CAST AND HAS REACHED A MINIMUM COMPRESSIVE STRENGTH OF 3,000 PSI.

ALL REINFORCING STEEL IN BARRIER RAILS SHALL BE EPOXY COATED.

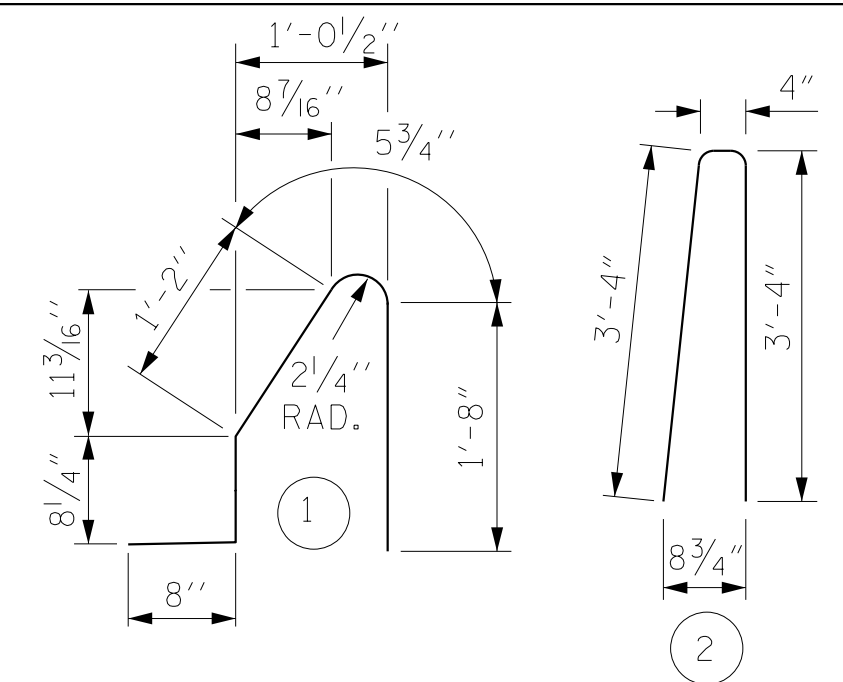
GROOVED CONTRACTION JOINTS, 1/2" IN DEPTH, SHALL BE TOOLED IN ALL EXPOSED FACES OF THE BARRIER RAIL AND IN ACCORDANCE WITH ARTICLE 825-10(B) OF THE STANDARD SPECIFICATIONS. THE CONTRACTION JOINT SHALL BE LOCATED AT EACH THIRD POINT BETWEEN BARRIER RAIL EXPANSION JOINTS. ONLY ONE CONTRACTION JOINT IS REQUIRED AT MIDPOINT OF BARRIER RAIL SEGMENTS LESS THAN 20 FEET IN LENGTH AND NO CONTRACTION JOINTS ARE REQUIRED FOR THOSE SEGMENTS LESS THAN 10 FEET IN LENGTH.

ANY FIELD CUT EPOXY COATED REINFORCEMENT SHALL BE REPAIRED AS DIRECTED BY THE ENGINEER.



SECTION THRU RAIL

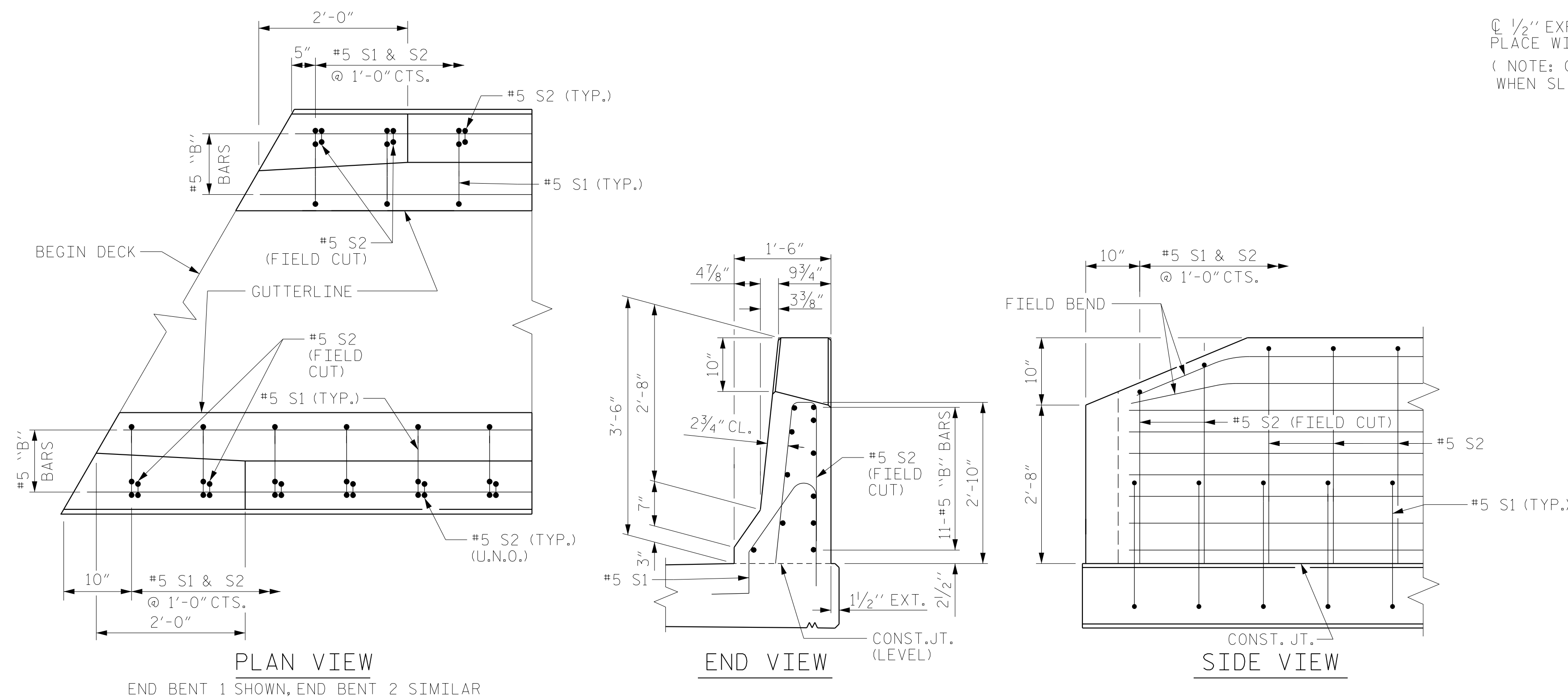
BAR TYPES



ALL BAR DIMENSIONS ARE OUT TO OUT

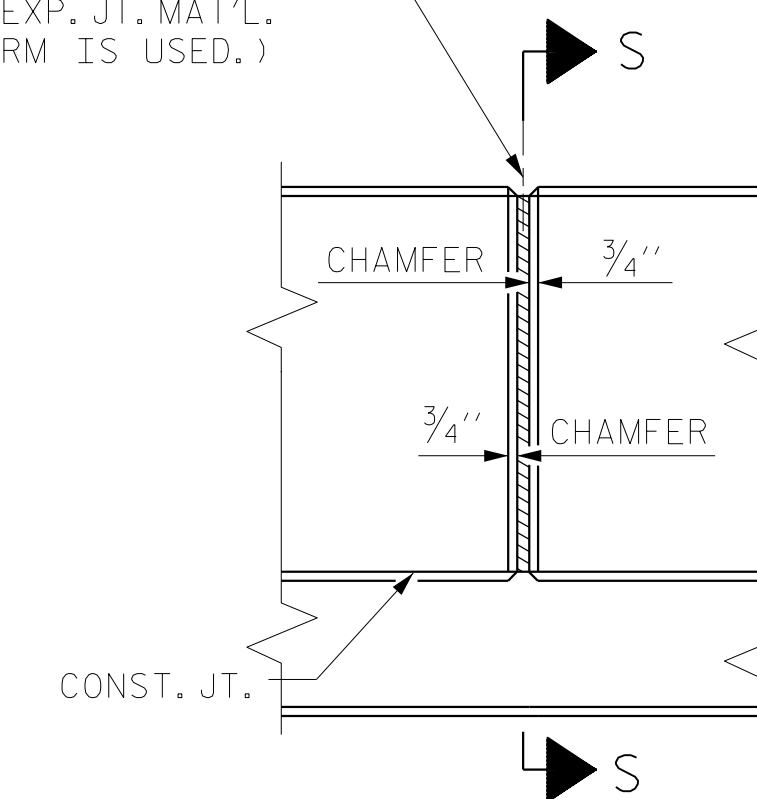
BILL OF MATERIAL

FOR CONCRETE BARRIER RAIL ONLY					
BAR	NO.	SIZE	TYPE	LENGTH	WEIGHT
* B1	132	#5	STR.	24'-7"	3385
* B2	22	#5	STR.	17'-10"	409
* B3	22	#5	STR.	17'-7"	403
* S1	372	#5	1	4'-8"	1811
* S2	372	#5	2	7'-0"	2716
* EPOXY COATED REINFORCING STEEL					8,724 LBS.
CLASS AA CONCRETE					50.7 CU. YDS.
CONCRETE BARRIER RAIL					372.50 LIN. FT.



END OF BARRIER RAIL DETAILS

1/2" EXP. JT. MAT'L HELD IN PLACE WITH GALVANIZED NAILS.
(NOTE: OMIT EXP. JT. MAT'L WHEN SLIP FORM IS USED.)



ELEVATION AT EXPANSION JOINTS
BARRIER RAIL DETAILS

PROJECT NO. R-5751
ROBESON COUNTY
STATION: 37+99.89 -Y1B-



STATE OF NORTH CAROLINA
DEPARTMENT OF TRANSPORTATION
RALEIGH
SUPERSTRUCTURE
CONCRETE
BARRIER RAIL

REVISIONS						SHEET NO.
NO.	BY:	DATE:	NO.	BY:	DATE:	S-15
1			3			TOTAL SHEETS
2			4			28

DOCUMENT NOT CONSIDERED FINAL UNLESS ALL SIGNATURES COMPLETED

DRAWN BY : TWL DATE : 10/2021
CHECKED BY : MRA DATE : 10/2021
DESIGN ENGINEER OF RECORD: MKO DATE : 10/2022