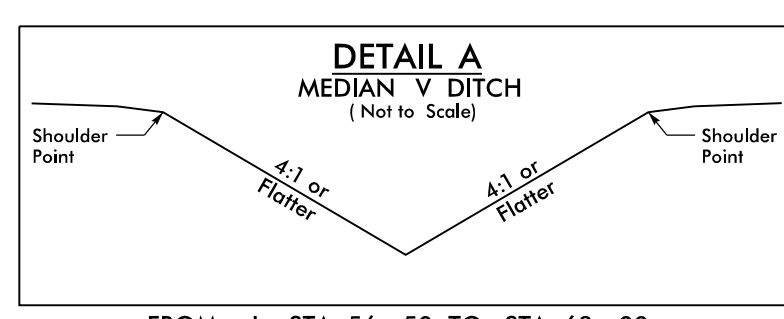


NORTH CAROLINA DEPT.
 OF ADMINISTRATION
 DB 1918 PG 636

-L- CURVE DATA

Pls Sta 60+65.59 Δs = 1°54'35.5" Ls = 300.00' LT = 200.01' ST = 100.01'	Pls Sta 65+86.83 Δ = 10°41'45.2" (LT) D = 1°16'23.7" L = 840.05' T = 421.25' R = 4,500.00' SE = 05 RO = SEE PLANS	Pls Sta 71+05.64 Δs = 1°54'35.5" Ls = 300.00' LT = 200.01' ST = 100.01'
-------------------------------------------------------------------------------------	----------------------------------------------------------------------------------------------------------------------------------------	-------------------------------------------------------------------------------------



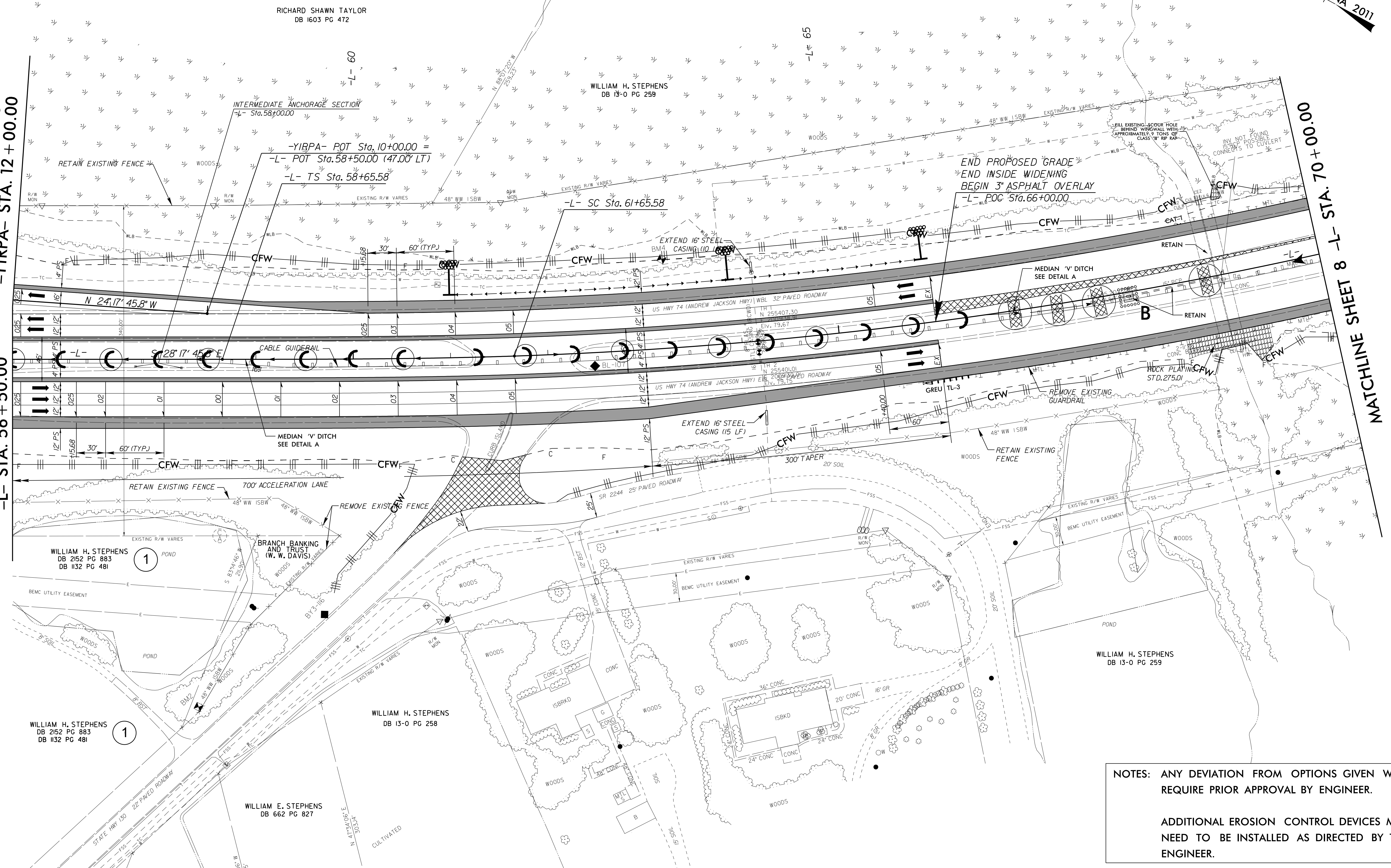
FROM -L- STA. 56+50 TO STA. 63+00
 FROM -L- STA. 66+50 TO STA. 68+00

NAD 83/NA 2011

MATCHLINE SHEET 6
 -YIRPA- STA. 12+00.00

MATCHLINE SHEET 6
 -L- STA. 56+50.00

MATCHLINE SHEET 8
 -L- STA. 70+00.00



NOTES: ANY DEVIATION FROM OPTIONS GIVEN WILL REQUIRE PRIOR APPROVAL BY ENGINEER.

ADDITIONAL EROSION CONTROL DEVICES MAY NEED TO BE INSTALLED AS DIRECTED BY THE ENGINEER.

REVISIONS
 06-SEP-2022 09:57
 C:\Users\jcc\OneDrive\Documents\Transportation\1030036026.R-5751.US.74.NC.72.NC.130.Final.Design\Design\Environmental\Design\PSH\R5751_EC_PSH_EC-16.dgn
 \$\$\$\$\$\$USERNAME\$\$\$\$\$\$