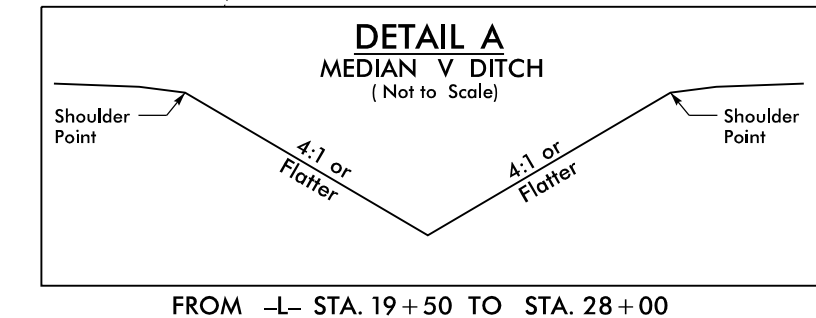
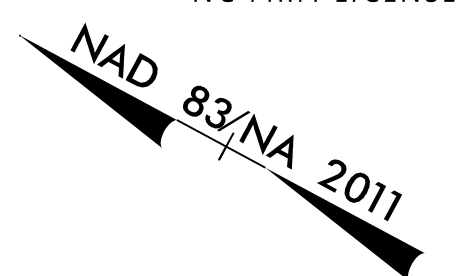
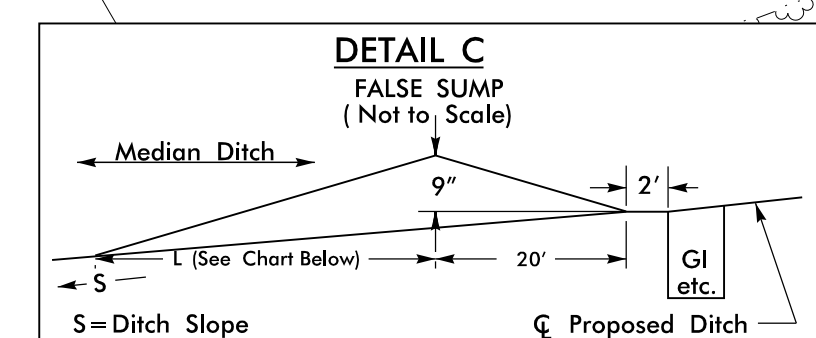




8521 SIX FORKS ROAD, SUITE 400
RALEIGH, NC 27615
NC FIRM LICENSE No: F-0493



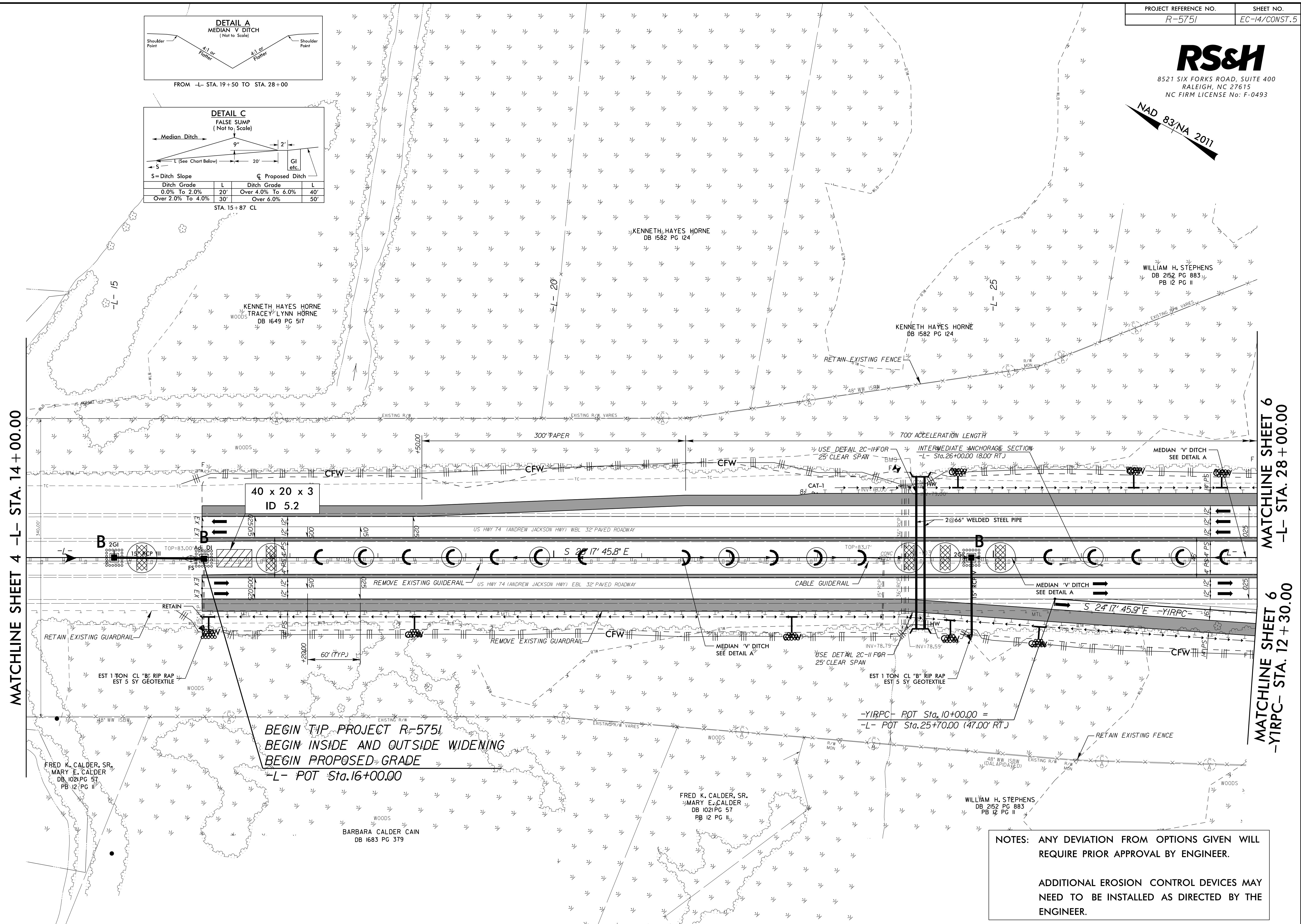
FROM -L- STA. 19+50 TO STA. 28+00



STA. 15+87 CL

MATCHLINE SHEET 4 -L- STA. 14+00.00

MATCHLINE SHEET 6 -L- STA. 28+00.00
MATCHLINE SHEET 6 -YIRPC- STA. 12+30.00



BEGIN TIP PROJECT R-5751
BEGIN INSIDE AND OUTSIDE WIDENING
BEGIN PROPOSED GRADE
-L- POT Sta.16+00.00

-YIRPC- POT Sta.10+00.00 =
-L- POT Sta.25+70.00 (47.00' RT.)

NOTES: ANY DEVIATION FROM OPTIONS GIVEN WILL REQUIRE PRIOR APPROVAL BY ENGINEER.

ADDITIONAL EROSION CONTROL DEVICES MAY NEED TO BE INSTALLED AS DIRECTED BY THE ENGINEER.

REVISIONS
 06-SEP-2022, 09:51
 C:\Users\jcalder\OneDrive\Documents\Transportation\1030036026\R-5751 US 74 NC 72 NC 130 Final Design\Design\Environmental\Design\PSH\R5751_EC_PSH_EC-14.dgn
 \$\$\$BUSPERM\$\$\$