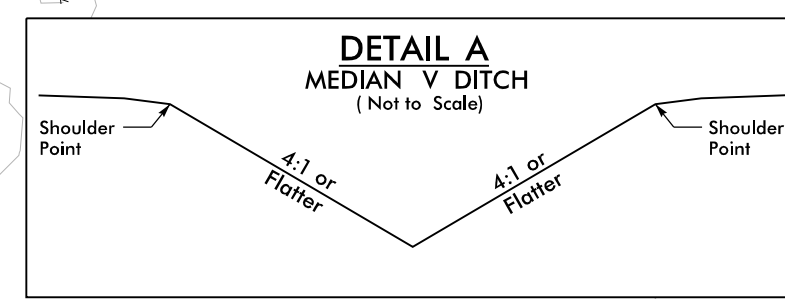


**-L- CURVE DATA**

Pls Sta 60+65.59 $\Theta_s = 1^{\circ}54'35.5''$ $L_s = 300.00'$ $LT = 200.01'$ $ST = 100.01'$	Pls Sta 65+86.83 $\Delta = 10^{\circ}41'45.2''$ (LT) $D = 1^{\circ}16'23.7''$ $L = 840.05'$ $T = 421.25'$ $R = 4500.00'$ $SE = 05$ $RO = \text{SEE PLANS}$	Pls Sta 71+05.64 $\Theta_s = 1^{\circ}54'35.5''$ $L_s = 300.00'$ $LT = 200.01'$ $ST = 100.01'$
--	---	--



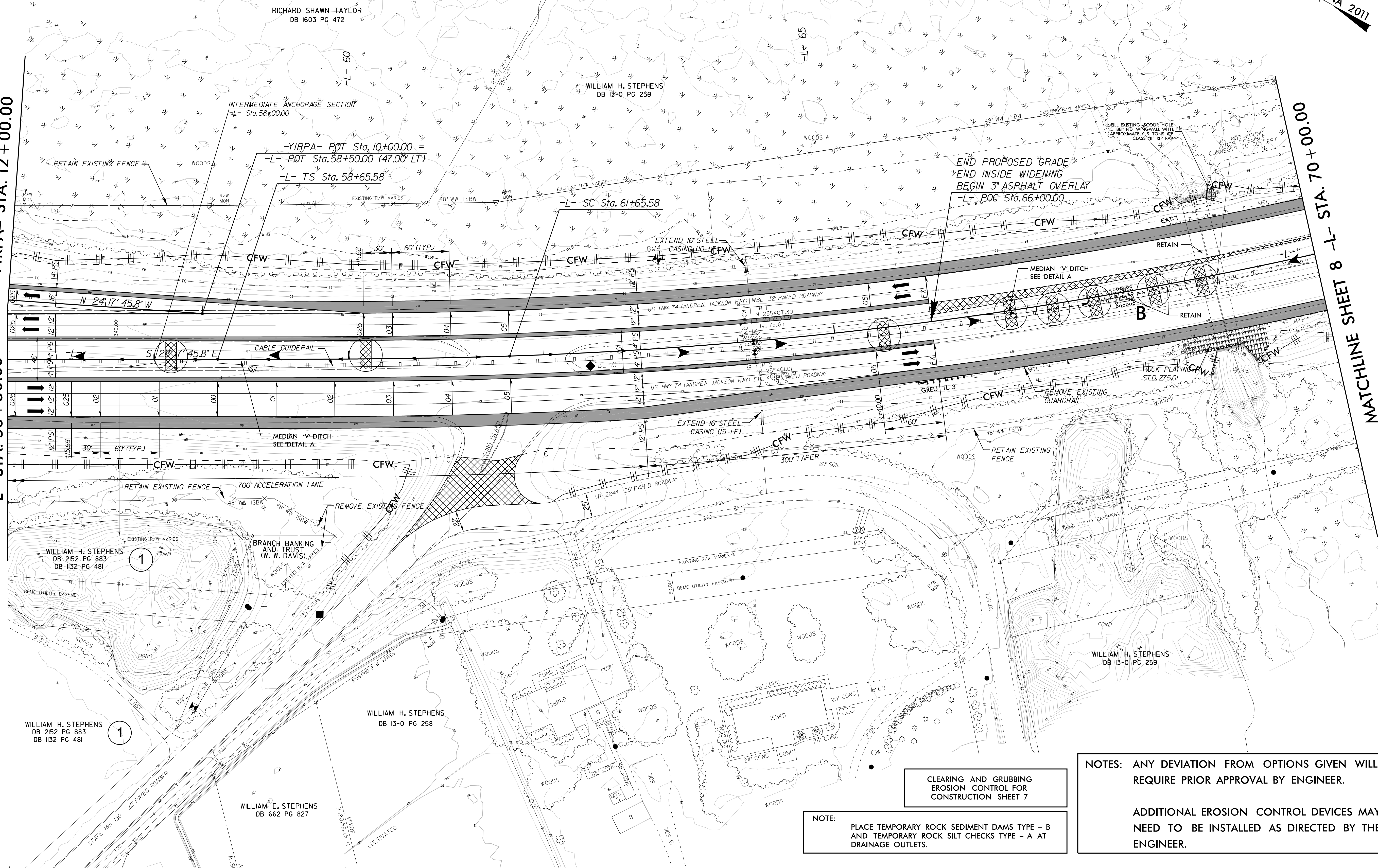
FROM -L- STA. 56+50 TO STA. 63+00  
 FROM -L- STA. 66+50 TO STA. 68+00

NORTH CAROLINA DEPT.  
 OF ADMINISTRATION  
 DB 1918 PG 636

MATCHLINE SHEET 6  
 -YIRPA- STA. 12+00.00

MATCHLINE SHEET 6  
 -L- STA. 56+50.00

MATCHLINE SHEET 8  
 -L- STA. 70+00.00



REVISIONS  
 06-SEP-2022 09:42  
 C:\Users\jcm\OneDrive\Documents\Transportation\1030036026.R-5751.US.74.NC.72.NC.130.Final.Design\Design\Environmental\Design\PSH\R5751\_EC\_PSH\_EC-7.dgn  
 \$\$\$USERNAME\$\$\$

CLEARING AND GRUBBING  
 EROSION CONTROL FOR  
 CONSTRUCTION SHEET 7

NOTE:  
 PLACE TEMPORARY ROCK SEDIMENT DAMS TYPE - B  
 AND TEMPORARY ROCK SILT CHECKS TYPE - A AT  
 DRAINAGE OUTLETS.

NOTES: ANY DEVIATION FROM OPTIONS GIVEN WILL  
 REQUIRE PRIOR APPROVAL BY ENGINEER.

ADDITIONAL EROSION CONTROL DEVICES MAY  
 NEED TO BE INSTALLED AS DIRECTED BY THE  
 ENGINEER.