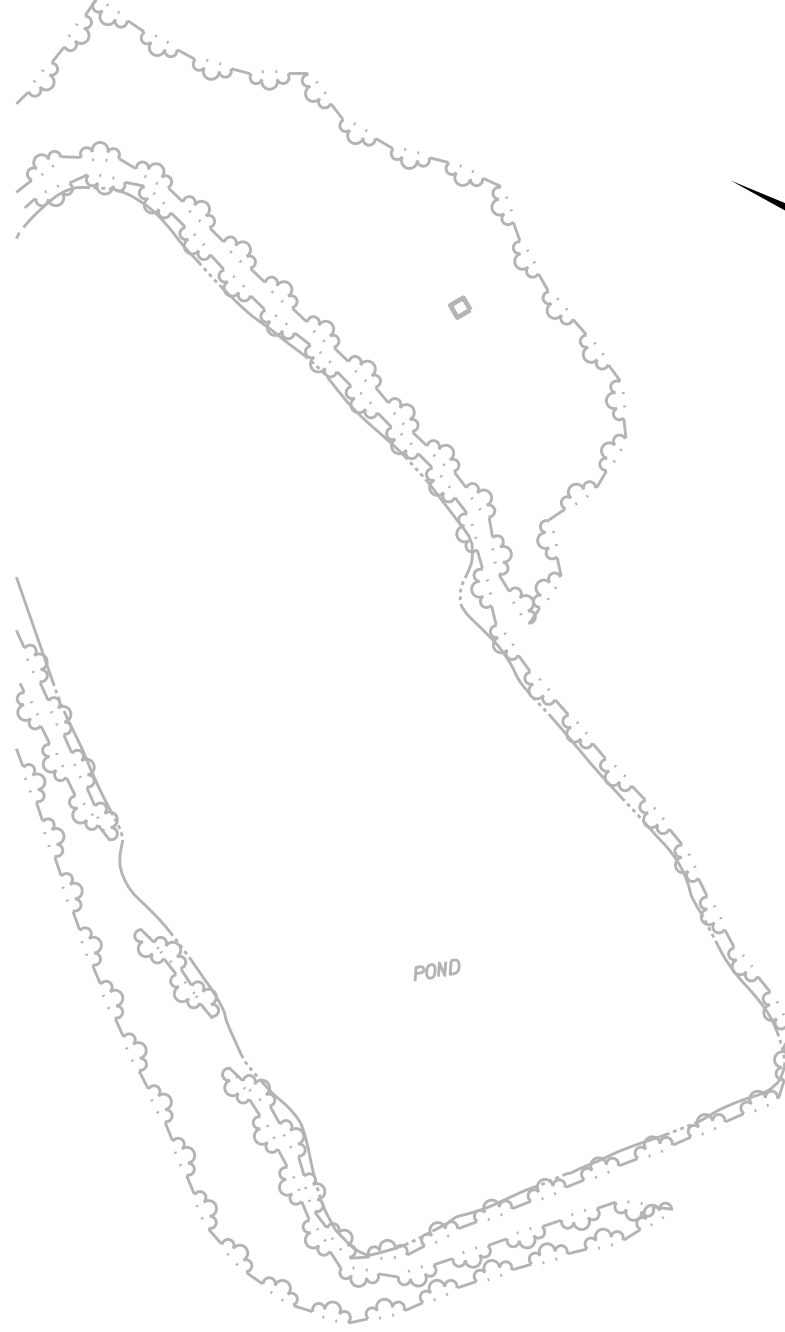
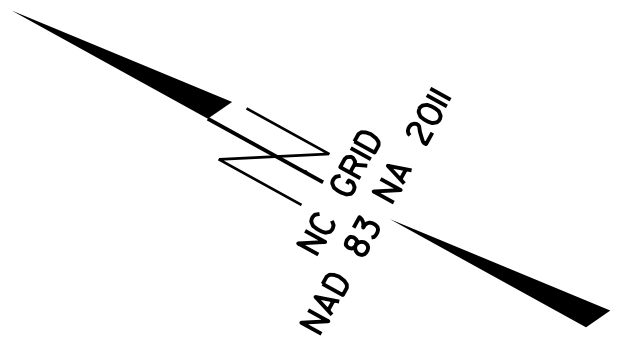


# SURVEY CONTROL SHEET

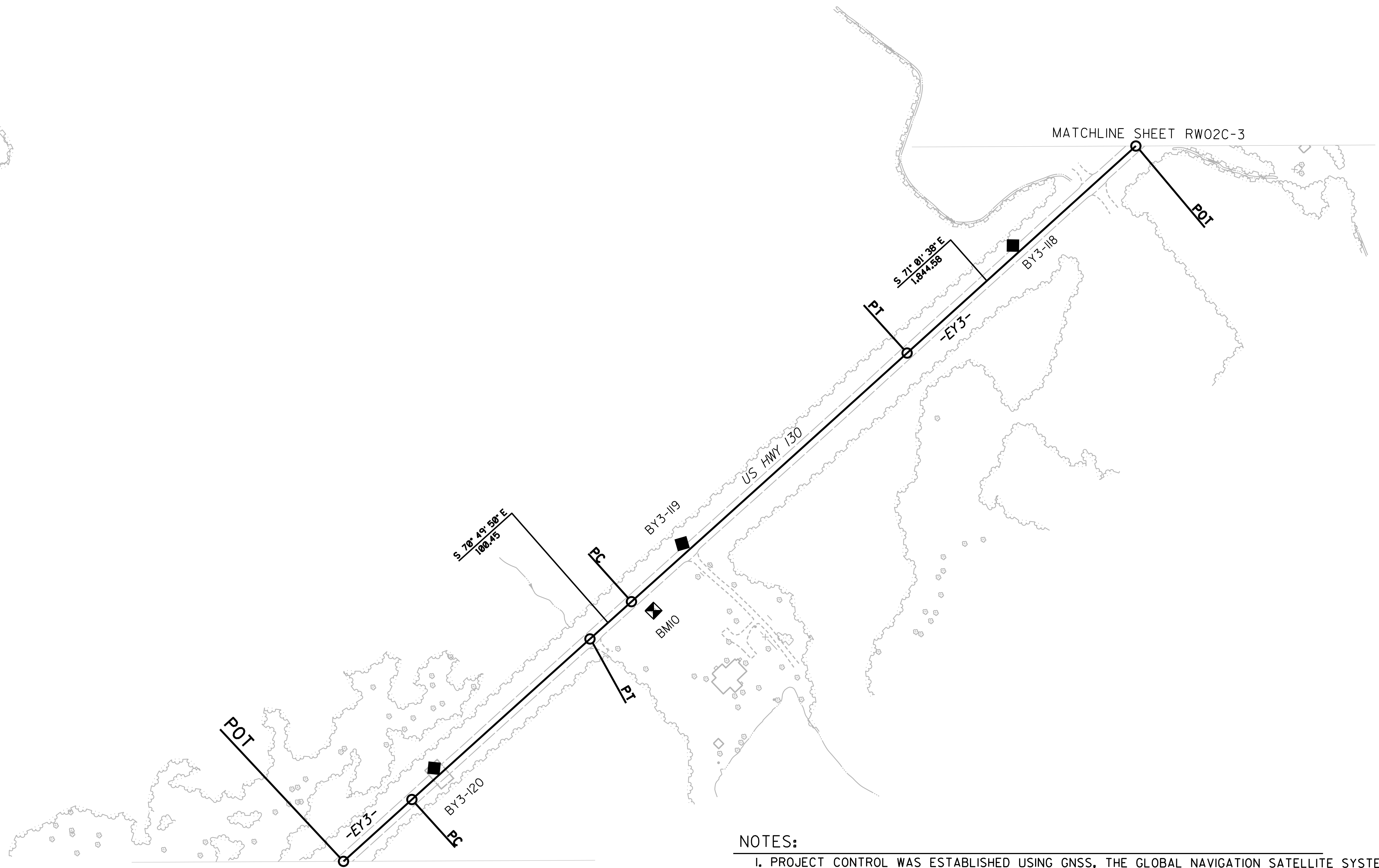
W/ EXISTING CENTERLINE ALIGNMENTS PRIOR TO CONSTRUCTION

6/2/99



REVISIONS

04 SEP 2018 07:21 from: SEP1\R-5751 Revised Control Sheets 8.30.18\final revised files\R5751 revised control sheets 180830\R5751-1s\_RW02C-6-180830.dgn  
 21 JUN 2018 09:06 from: SEP1\R-5751 Revised Control Sheets 8.30.18\final revised files\R5751 revised control sheets 180830\R5751-1s\_RW02C-6-180830.dgn



**NOTES:**

1. PROJECT CONTROL WAS ESTABLISHED USING GNSS, THE GLOBAL NAVIGATION SATELLITE SYSTEM.
2. THE SURVEY CONTROL DATA FOR THIS PROJECT HAS BEEN COMPILED FROM VARIOUS SOURCES. IF FURTHER INFORMATION REGARDING PROJECT CONTROL IS NEEDED, PLEASE CONTACT THE LOCATION AND SURVEYS UNIT.