

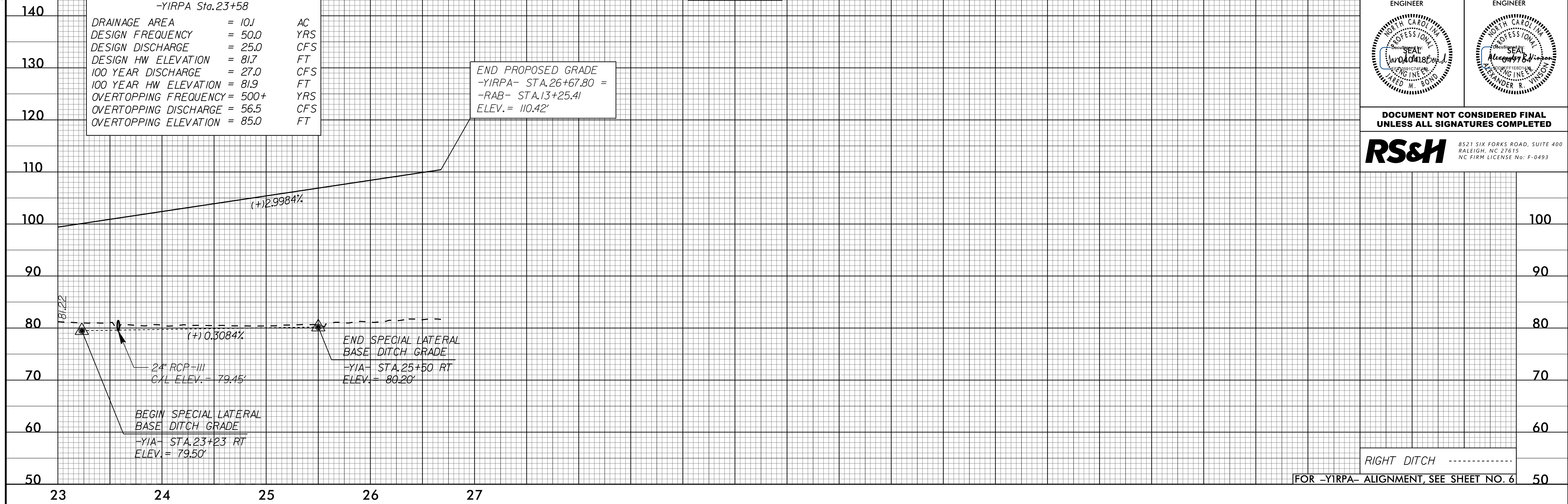
5/14/99

**PIPE HYDRAULIC DATA**  
-YIRPA Sta.23+58

DRAINAGE AREA	= 10.1	AC
DESIGN FREQUENCY	= 50.0	YRS
DESIGN DISCHARGE	= 25.0	CFS
DESIGN HW ELEVATION	= 81.7	FT
100 YEAR DISCHARGE	= 27.0	CFS
100 YEAR HW ELEVATION	= 81.9	FT
OVERTOPPING FREQUENCY	= 500+	YRS
OVERTOPPING DISCHARGE	= 56.5	CFS
OVERTOPPING ELEVATION	= 85.0	FT

-YIRPA-

END PROPOSED GRADE  
-YIRPA- STA.26+67.80 =  
-RAB- STA.13+25.41  
ELEV. = 110.42'



DOCUMENT NOT CONSIDERED FINAL  
UNLESS ALL SIGNATURES COMPLETED

**RS&H** 8521 SIX FORKS ROAD, SUITE 400  
RALEIGH, NC 27615  
NC FIRM LICENSE No: F-0493

PROJECT REFERENCE NO. R-5751	SHEET NO. 21
ROADWAY DESIGN ENGINEER 	HYDRAULICS ENGINEER 

05-OCT-2002 10:42 P:\P\05751-Rdy.pfl\_21.dgn

-YIRPB-

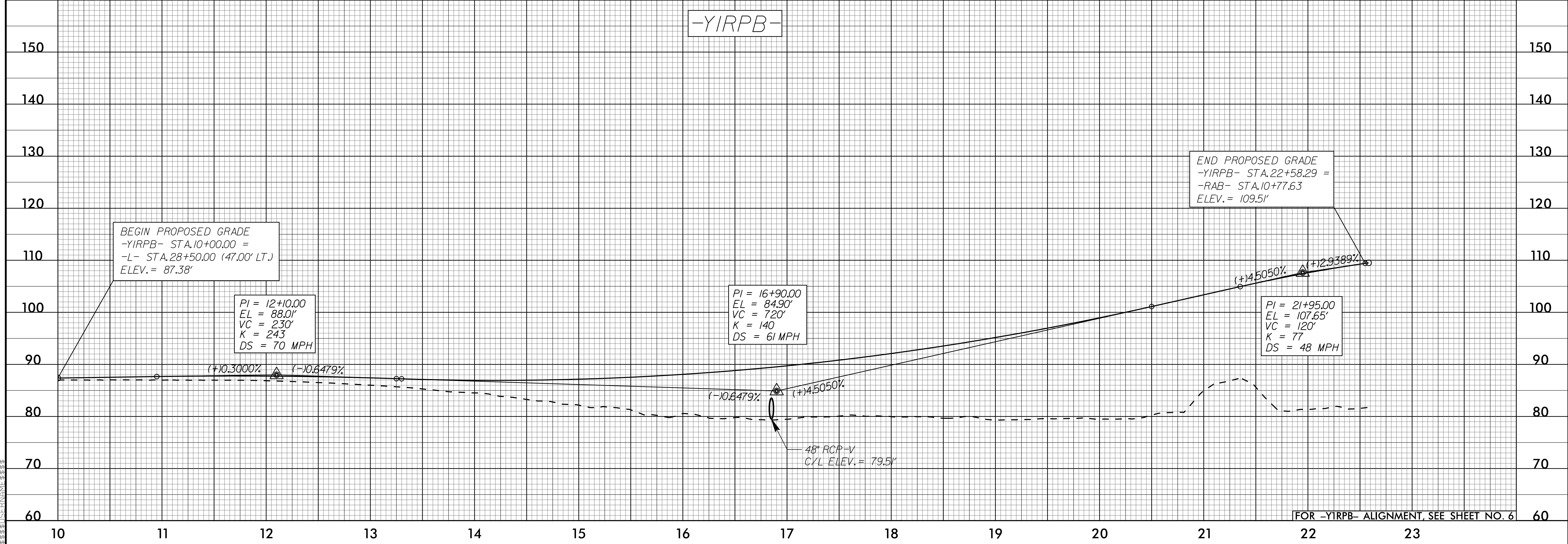
BEGIN PROPOSED GRADE  
-YIRPB- STA.10+00.00 =  
-L- STA.28+50.00 (47.00' LT.)  
ELEV. = 87.38'

END PROPOSED GRADE  
-YIRPB- STA.22+58.29 =  
-RAB- STA.10+77.63  
ELEV. = 109.51'

PI = 12+10.00  
EL = 88.01'  
VC = 230'  
K = 243  
DS = 70 MPH

PI = 16+90.00  
EL = 84.90'  
VC = 720'  
K = 140  
DS = 61 MPH

PI = 21+95.00  
EL = 107.65'  
VC = 120'  
K = 77  
DS = 48 MPH



FOR -YIRPB- ALIGNMENT, SEE SHEET NO. 6