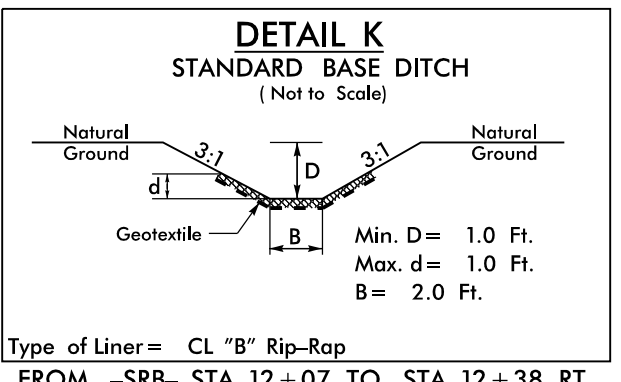
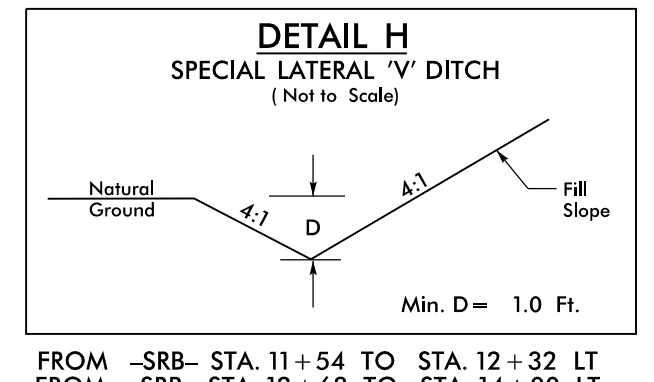
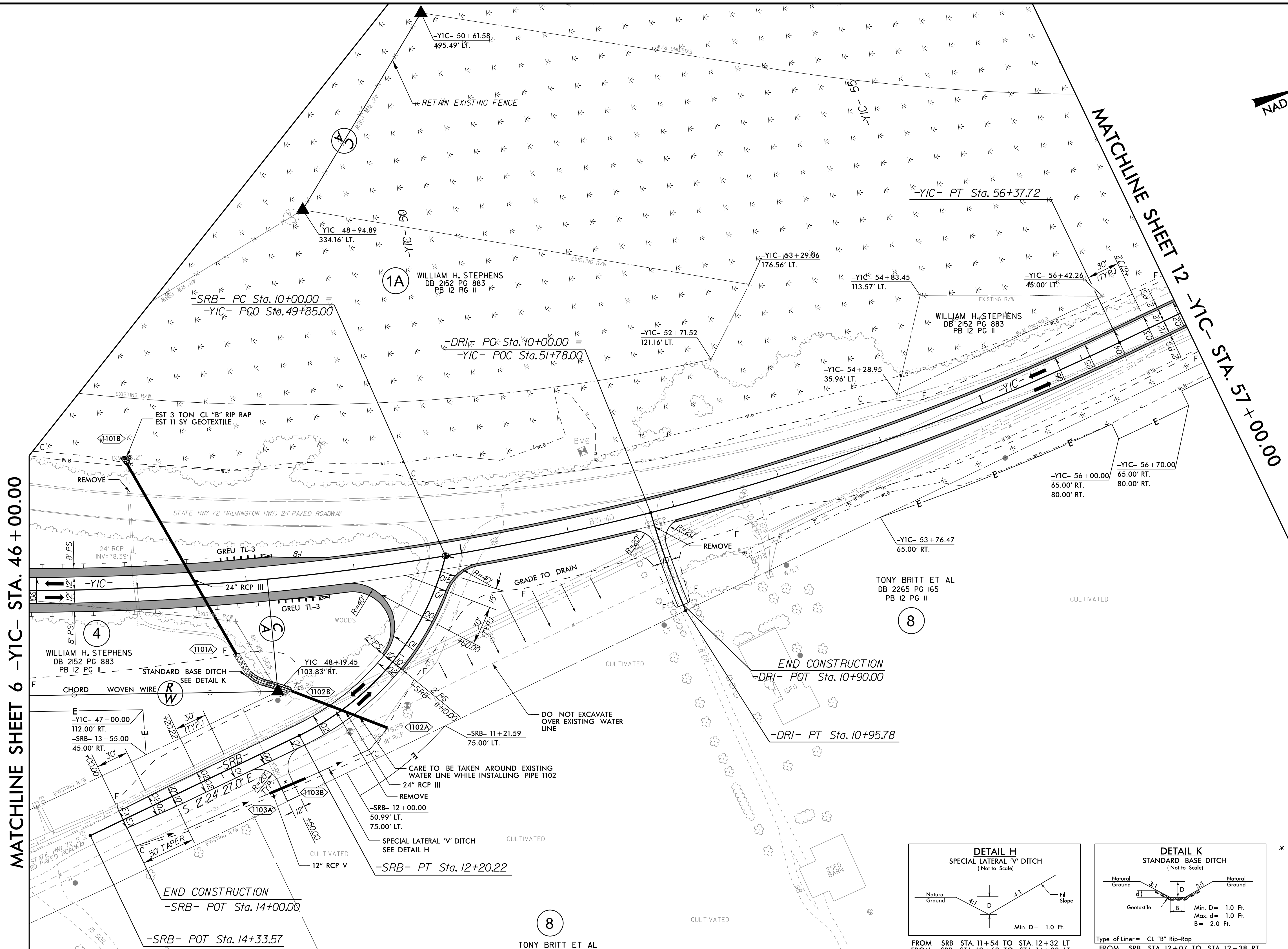
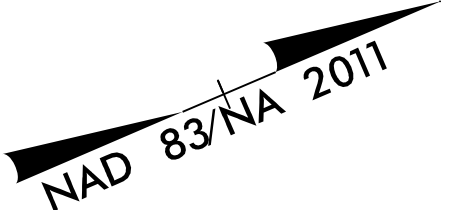


DOCUMENT NOT CONSIDERED FINAL
UNLESS ALL SIGNATURES COMPLETED

RS&H 8521 SIX FORKS ROAD, SUITE 400
RALEIGH, NC 27615
NC FIRM LICENSE No: F-0493



* 8" ABC DRIVEWAY
ACTUAL LOCATION MAY NEED TO BE FIELD ADJUSTED
TO MATCH EXISTING FIELD ACCESS.

-YIC- CURVE DATA

PI Sta 49+05.07
$\Delta = 37^\circ 35' 51.9" (LT)$
$D = 2^\circ 28' 10.7"$
$L = 1,522.39'$
$T = 789.74'$
$R = 2,320.00'$
SE = 06
RO = SEE PLANS
DS = 60 MPH

-SRB- CURVE DATA

PI Sta 11+17.83
$\Delta = 50^\circ 28' 17.2" (RT)$
$D = 22^\circ 55' 05.9"$
$L = 220.22'$
$T = 117.83'$
$R = 250.00'$
SE = 02
RO = SEE PLANS

-DRI- CURVE DATA

PI Sta 10+47.96
$\Delta = 7^\circ 19' 02.3" (LT)$
$D = 7^\circ 38' 22.0"$
$L = 95.78'$
$T = 47.96'$
$R = 750.00'$
SE = NC

FOR -YIC- PROFILE, SEE SHEET NO. 19 & 20
FOR -SRB- PROFILE, SEE SHEET NO. 24
FOR -DRI- PROFILE, SEE SHEET NO. 25

REVISIONS

8/17/99
27-OCT-2022 17:45
R:\Roadway\Projects\195751_Rdy.psh_11.dgn
SUSAN@RSANDH.COM