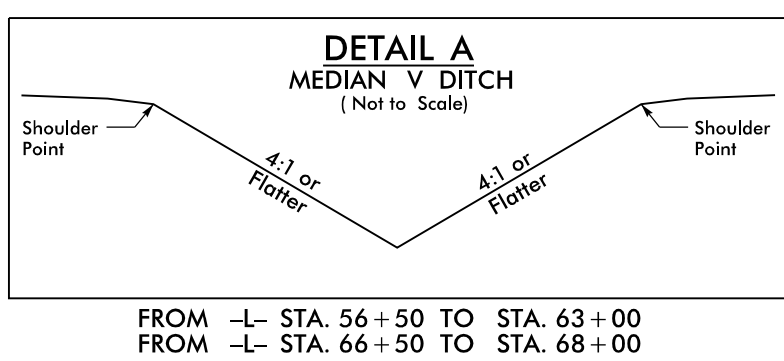


**DOCUMENT NOT CONSIDERED FINAL
UNLESS ALL SIGNATURES COMPLETED**

RS&H
8521 SIX FORKS ROAD, SUITE 400
RALEIGH, NC 27615
NC FIRM LICENSE No: F-0493

-L- CURVE DATA

| | | |
|---------------------------------|-------------------------------------|---------------------------------|
| Pls Sta 60+65.59 | Pls Sta 65+86.83 | Pls Sta 71+05.64 |
| $\Theta_s = 1^\circ 54' 35.5''$ | $\Delta = 10^\circ 41' 45.2''$ (LT) | $\Theta_s = 1^\circ 54' 35.5''$ |
| Ls = 300.00' | D = 116' 23.7" | Ls = 300.00' |
| LT = 200.01' | L = 840.05' | LT = 200.01' |
| ST = 100.01' | T = 421.25' | ST = 100.01' |
| | R = 4,500.00' | |
| | SE = 05 | |
| | RO = SEE PLANS | |



FROM -L- STA. 56+50 TO STA. 63+00
FROM -L- STA. 66+50 TO STA. 68+00

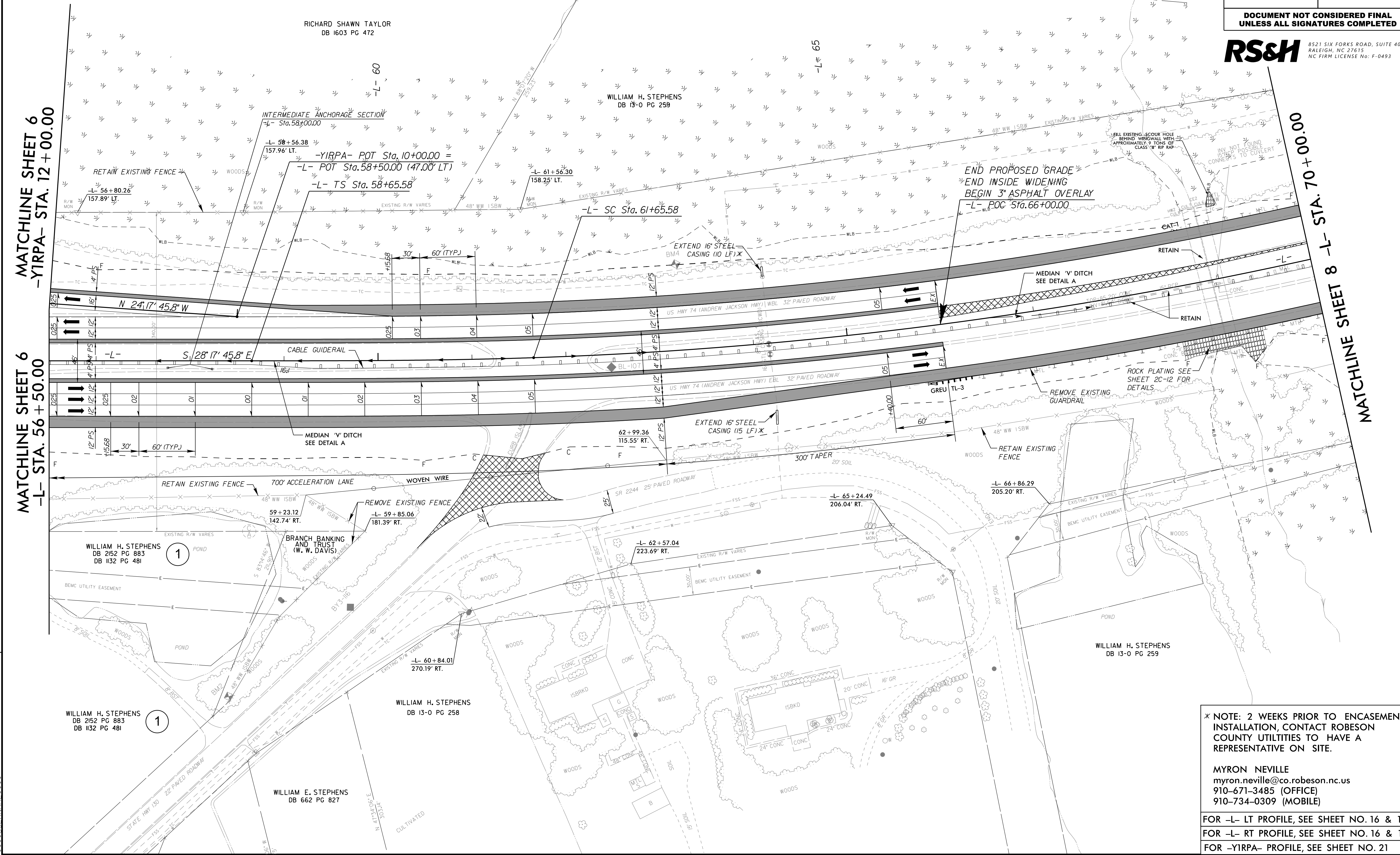
NORTH CAROLINA DEPT.
OF ADMINISTRATION
DB 1918 PG 636

NAD 83/NA 2011

MATCHLINE SHEET 6
-YIRPA- STA. 12+00.00

MATCHLINE SHEET 6
-L- STA. 56+50.00

MATCHLINE SHEET 8
-L- STA. 70+00.00



REVISIONS

* NOTE: 2 WEEKS PRIOR TO ENCASUREMENT
INSTALLATION, CONTACT ROBESON
COUNTY UTILITIES TO HAVE A
REPRESENTATIVE ON SITE.

MYRON NEVILLE
myron.neville@co.robeson.nc.us
910-671-3485 (OFFICE)
910-734-0309 (MOBILE)

FOR -L- LT PROFILE, SEE SHEET NO. 16 & 17
FOR -L- RT PROFILE, SEE SHEET NO. 16 & 17
FOR -YIRPA- PROFILE, SEE SHEET NO. 21

05-OCT-2022 10:42
R:\Roadway\Projects\R575J_L_Rdy_psh_7.dgn
MUSHER\AMF