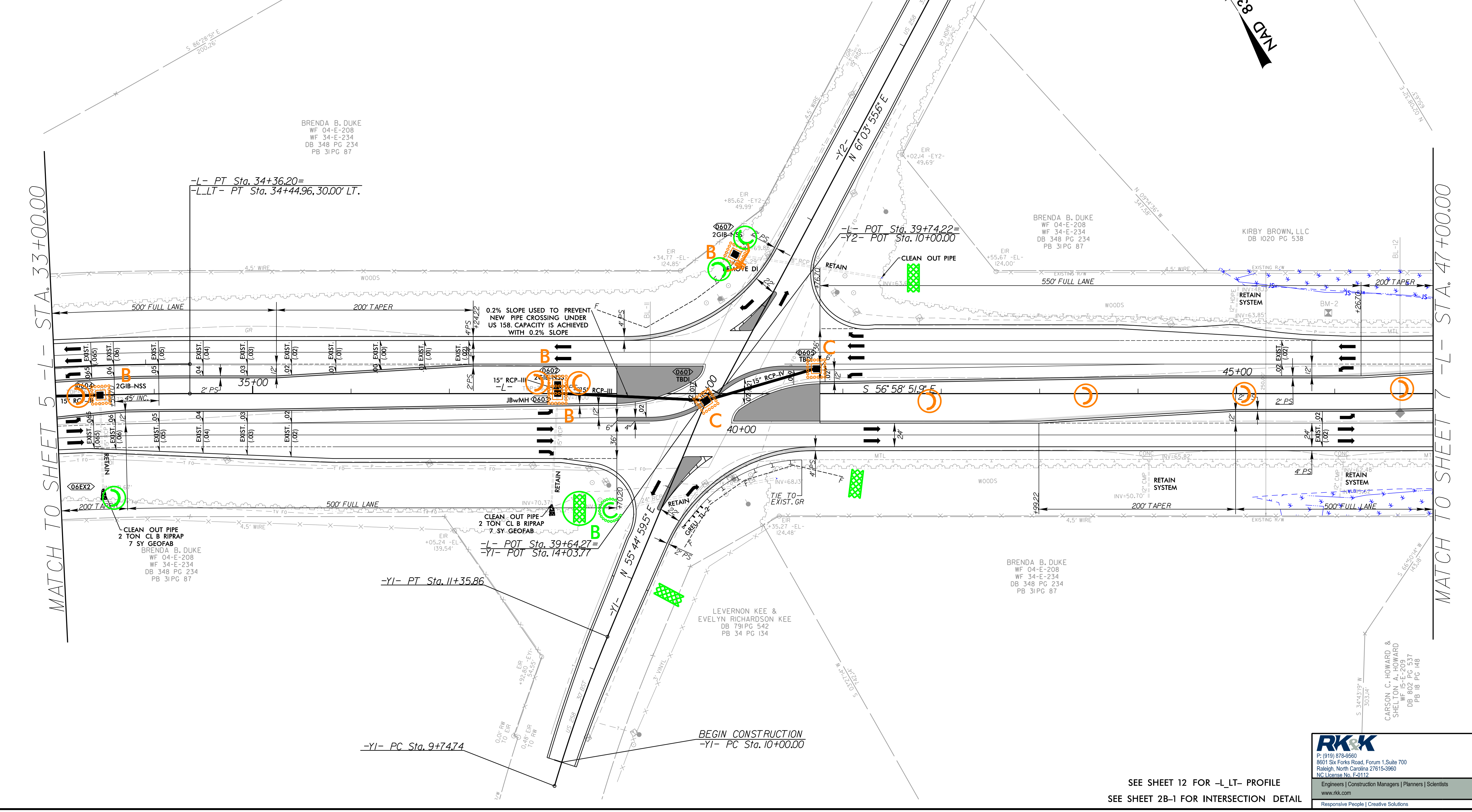
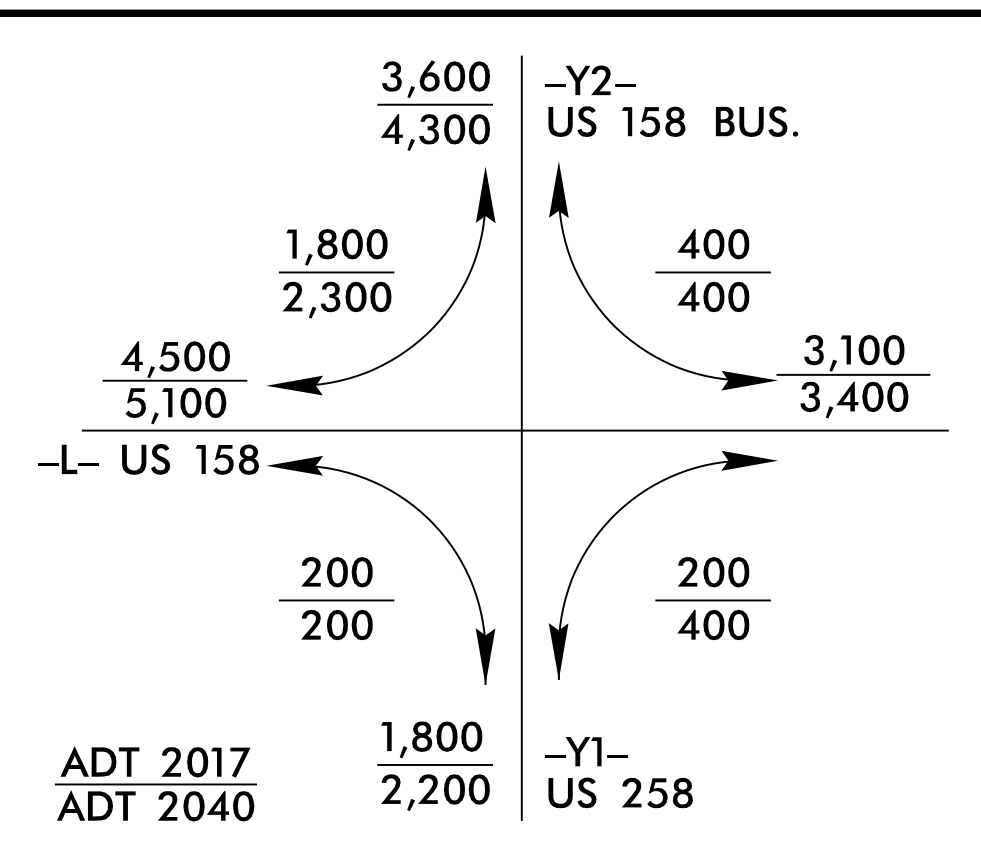


PROJECT REFERENCE NO.	SHEET NO.
W-5701B	EC-14/CONST.06
R/W SHEET NO.	
ROADWAY DESIGN ENGINEER	HYDRAULICS ENGINEER

-L-
 PI Sta 26+66.49
 $\Delta = 31^{\circ}36'47.0"$ (RT)
 $D = 1^{\circ}59'59.5"$
 $L = 1,580.77'$
 $T = 811.07'$
 $R = 2,865.00'$
 SE = EXIST.

-YI-
 PI Sta 10+55.38
 $\Delta = 6^{\circ}21'59.4"$ (RT)
 $D = 3^{\circ}57'05.2"$
 $L = 161.2'$
 $T = 80.64'$
 $R = 1,450.00'$
 SE = EXIST.

NOTE: UTILIZE FABRIC INSERT INLET PROTECTION IN LIEU OF TYPE C INLET PROTECTION WHERE WATER MIGHT POND ON ROADWAY USED BY PUBLIC TRAFFIC.



5/14/99
 C:\Users\CAAD00\OneDrive\Documents\Control\W5701B_Hyd_EC.psh.14.dgn
 6/8/2022
 10:00 AM