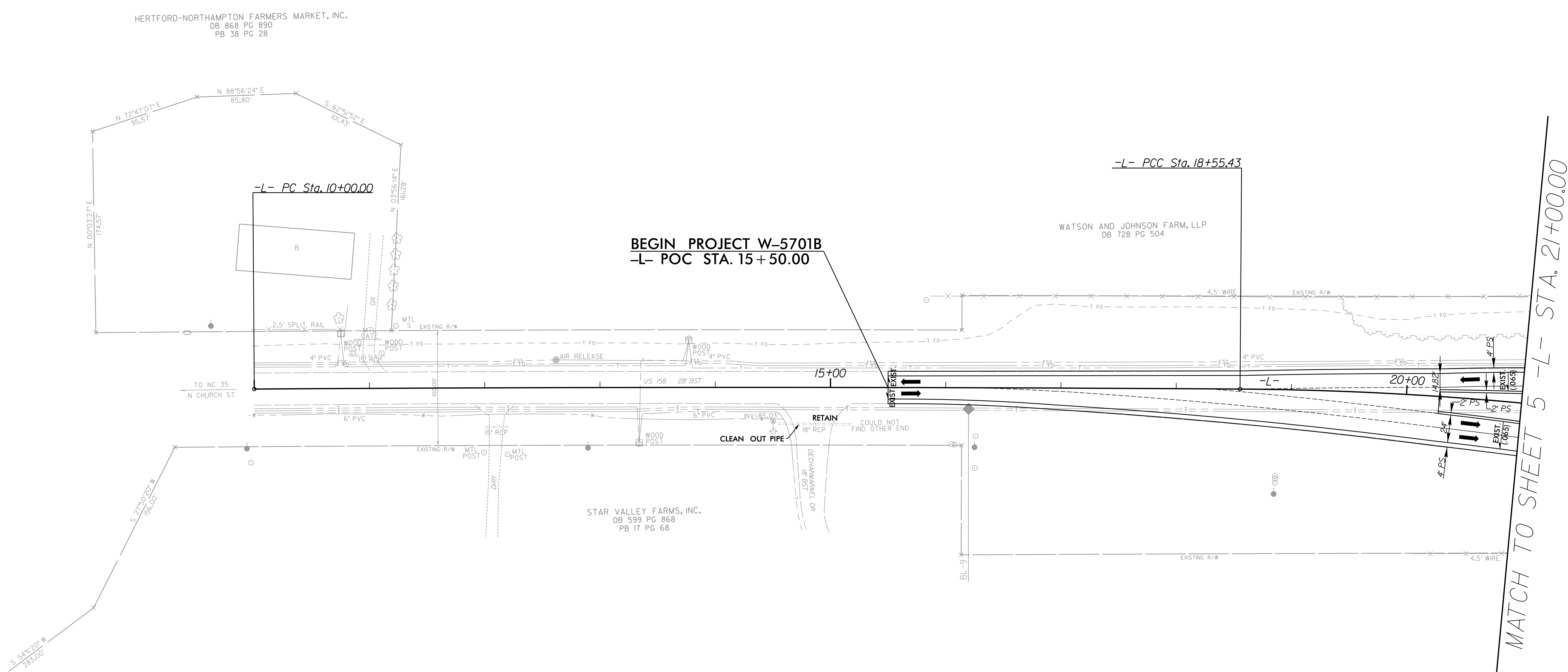


5/14/99

PI Sta 14+27.72 Δ = 0° 47' 25.9" (RT) D = 0° 05' 32.7" L = 855.43' T = 427.72' R = 62,000.00' SE = EXIST.	-L-	PI Sta 26+66.49 Δ = 31° 36' 47.0" (RT) D = 1° 59' 59.5" L = 1,580.77' T = 811.07' R = 2,865.00' SE = EXIST.
---	-----	---

PROJECT REFERENCE NO. W-5701B	SHEET NO. EC-12/CONST.04
ROADWAY DESIGN ENGINEER	HYDRAULICS ENGINEER

NOTE: UTILIZE FABRIC INSERT INLET PROTECTION IN LIEU OF TYPE C INLET PROTECTION WHERE WATER MIGHT POND ON ROADWAY USED BY PUBLIC TRAFFIC.



NAD 83/NA 2011

C:\Users\cra001\Documents\2022\Position Control\W5701B_Hyd_EC.psh.12.dgn
 5/14/2022 10:00 AM