

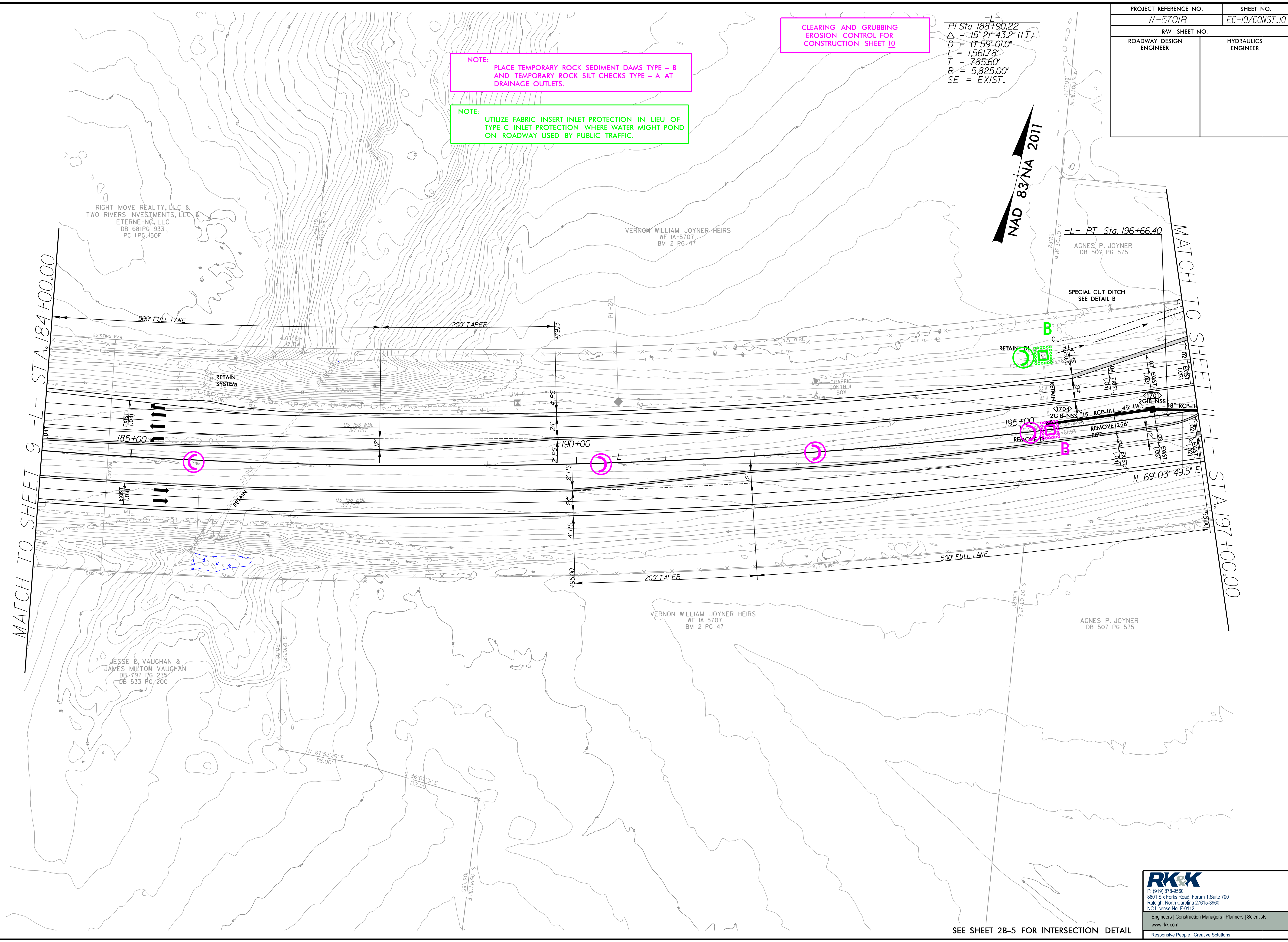
PROJECT REFERENCE NO.	SHEET NO.
W-5701B	EC-10/CONST.10
RW SHEET NO.	
ROADWAY DESIGN ENGINEER	HYDRAULICS ENGINEER

CLEARING AND GRUBBING  
EROSION CONTROL FOR  
CONSTRUCTION SHEET 10

-L-  
PI Sta 188+90.22  
 $\Delta = 15^{\circ} 21' 43.2" (LT)$   
 $D = 0^{\circ} 59' 01.0"$   
 $L = 1,561.78'$   
 $T = 785.60'$   
 $R = 5,825.00'$   
SE = EXIST.

NOTE:  
PLACE TEMPORARY ROCK SEDIMENT DAMS TYPE - B  
AND TEMPORARY ROCK SILT CHECKS TYPE - A AT  
DRAINAGE OUTLETS.

NOTE:  
UTILIZE FABRIC INSERT INLET PROTECTION IN LIEU OF  
TYPE C INLET PROTECTION WHERE WATER MIGHT POND  
ON ROADWAY USED BY PUBLIC TRAFFIC.



RIGHT MOVE REALTY, LLC &  
TWO RIVERS INVESTMENTS, LLC  
ETERNE-NG, LLC  
DB 681 PG 933  
PC 1PG 150F

VERNON WILLIAM JOYNER HEIRS  
WF 1A-5707  
BM 2 PG 47

AGNES P. JOYNER  
DB 507 PG 575

JESSE E. VAUGHAN &  
JAMES MILTON VAUGHAN  
DB 797 PG 275  
DB 533 PG 200

VERNON WILLIAM JOYNER HEIRS  
WF 1A-5707  
BM 2 PG 47

AGNES P. JOYNER  
DB 507 PG 575

5/14/99

C:\Users\CAAD0618\OneDrive\Documents\Control\W5701B-Hyd-EC-psd-10.dgn

**RK&K**  
P: (919) 878-9560  
8601 Six Forks Road, Forum 1, Suite 700  
Raleigh, North Carolina 27615-3960  
NC License No. F-0112  
Engineers | Construction Managers | Planners | Scientists  
www.rkk.com  
Responsive People | Creative Solutions

SEE SHEET 2B-5 FOR INTERSECTION DETAIL