

PROJECT REFERENCE NO.	SHEET NO.
W-5701B	EC-08/CONST.08
RW SHEET NO.	
ROADWAY DESIGN ENGINEER	HYDRAULICS ENGINEER

PI Sta 165+43.38
 $\Delta = 20' 53" 20.9" (LT)$
 $D = 1'00' 18.7"$
 $L = 2,078.13'$
 $T = 1,050.73'$
 $R = 5,700.00'$
 $SE = EXIST.$

CLEARING AND GRUBBING
EROSION CONTROL FOR
CONSTRUCTION SHEET 8

NOTE:
PLACE TEMPORARY ROCK SEDIMENT DAMS TYPE - B
AND TEMPORARY ROCK SILT CHECKS TYPE - A AT
DRAINAGE OUTLETS.

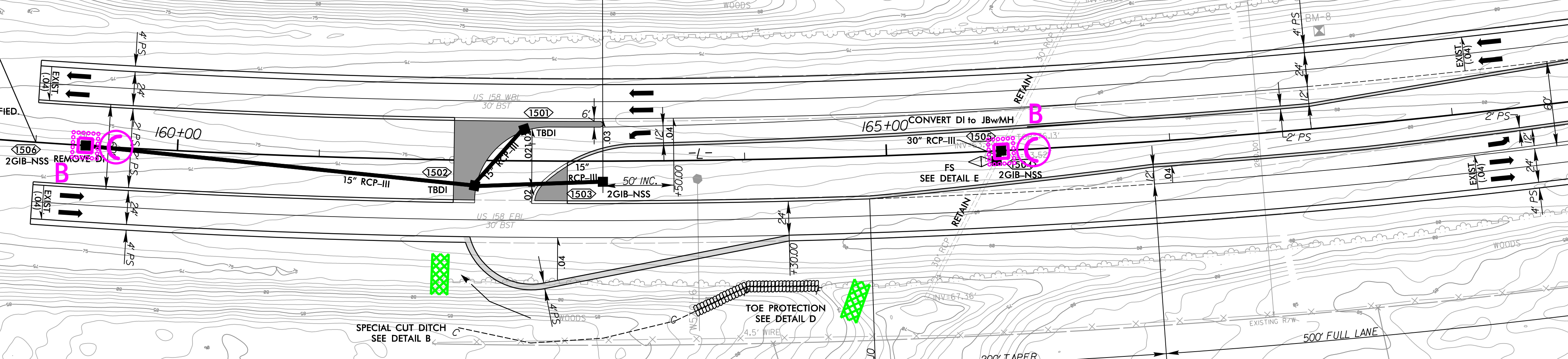
NOTE:
UTILIZE FABRIC INSERT INLET PROTECTION IN LIEU OF
TYPE C INLET PROTECTION WHERE WATER MIGHT POND
ON ROADWAY USED BY PUBLIC TRAFFIC.

1102
NAD 83
NAD 2011

MATCH TO SHEET 9-1- STA 170+00.00

BEGIN CONSTRUCTION
L- POC Sta. 159+00.00

EXISTING DI APPROXIMATELY LOCATED
BASED ON AERIAL AND LIDAR. RIM AND
INVERT ELEVATIONS WILL NEED TO BE FIELD VERIFIED.



SPECIAL CUT DITCH
SEE DETAIL B

TOE PROTECTION
SEE DETAIL D

5/14/99
 C:\Users\jacob\OneDrive\Documents\Projects\W-5701B-Hyd-EC-psd.dgn
 10/18/2022
 10:00 AM

RK&K
 P: (919) 878-9560
 8601 Six Forks Road, Forum 1, Suite 700
 Raleigh, North Carolina 27615-3960
 NC License No. F-0112
 Engineers | Construction Managers | Planners | Scientists
 www.rkk.com
 Responsive People | Creative Solutions

SEE SHEET 2B-3 FOR INTERSECTION DETAIL