

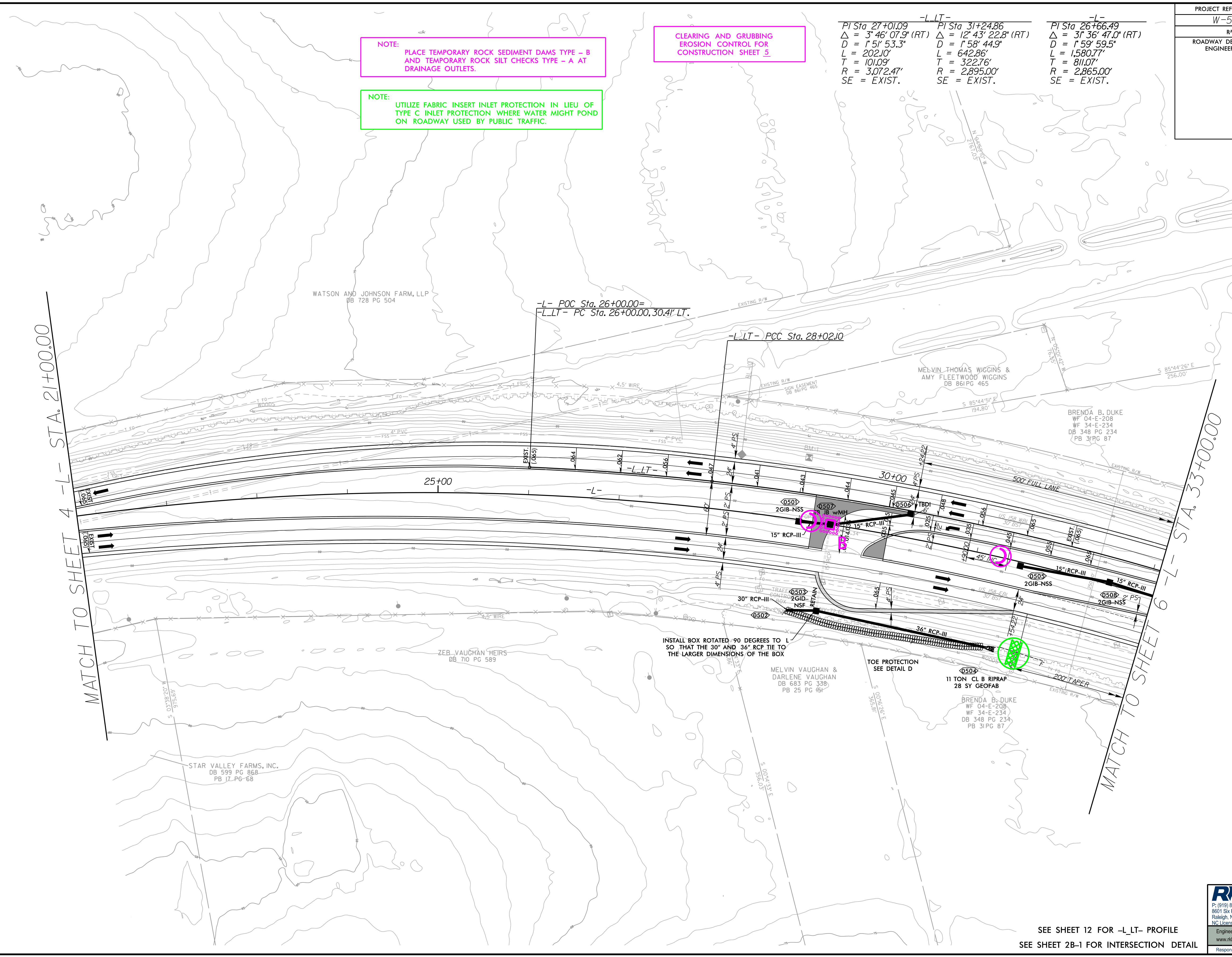
PROJECT REFERENCE NO.	SHEET NO.
W-5701B	EC-05/CONST.05
RW SHEET NO.	
ROADWAY DESIGN ENGINEER	HYDRAULICS ENGINEER

-L LT-		-L-	
PI Sta 27+01.09	PI Sta 31+24.86	PI Sta 26+66.49	
$\Delta = 3' 46' 07.9''$ (RT)	$\Delta = 12' 43' 22.8''$ (RT)	$\Delta = 3' 36' 47.0''$ (RT)	
D = 151' 53.3'	D = 158' 44.9'	D = 159' 59.5'	
L = 202.10'	L = 642.86'	L = 1,580.77'	
T = 101.09'	T = 322.76'	T = 811.07'	
R = 3,072.47'	R = 2,895.00'	R = 2,865.00'	
SE = EXIST.	SE = EXIST.	SE = EXIST.	

NOTE: PLACE TEMPORARY ROCK SEDIMENT DAMS TYPE - B AND TEMPORARY ROCK SILT CHECKS TYPE - A AT DRAINAGE OUTLETS.

CLEARING AND GRUBBING EROSION CONTROL FOR CONSTRUCTION SHEET 5

NOTE: UTILIZE FABRIC INSERT INLET PROTECTION IN LIEU OF TYPE C INLET PROTECTION WHERE WATER MIGHT POND ON ROADWAY USED BY PUBLIC TRAFFIC.



NAD 83/NA 2011

MATCH TO SHEET 4 - L- STA. 21+00.00

MATCH TO SHEET 6 - L- STA. 33+00.00

INSTALL BOX ROTATED 90 DEGREES TO L SO THAT THE 30" AND 36" RCP TIE TO THE LARGER DIMENSIONS OF THE BOX

TOE PROTECTION SEE DETAIL D

5/14/99
C:\Users\CAD\OneDrive\Documents\Projects\W5701B-Hyd-EC-ps-h_05.dgn
10/22/2022

SEE SHEET 12 FOR -L LT- PROFILE
SEE SHEET 2B-1 FOR INTERSECTION DETAIL

RK&K
 P: (919) 878-9560
 8601 Six Forks Road, Forum 1, Suite 700
 Raleigh, North Carolina 27615-3960
 NC License No. F-0112
 Engineers | Construction Managers | Planners | Scientists
 www.rkk.com
 Responsive People | Creative Solutions