

5/14/99

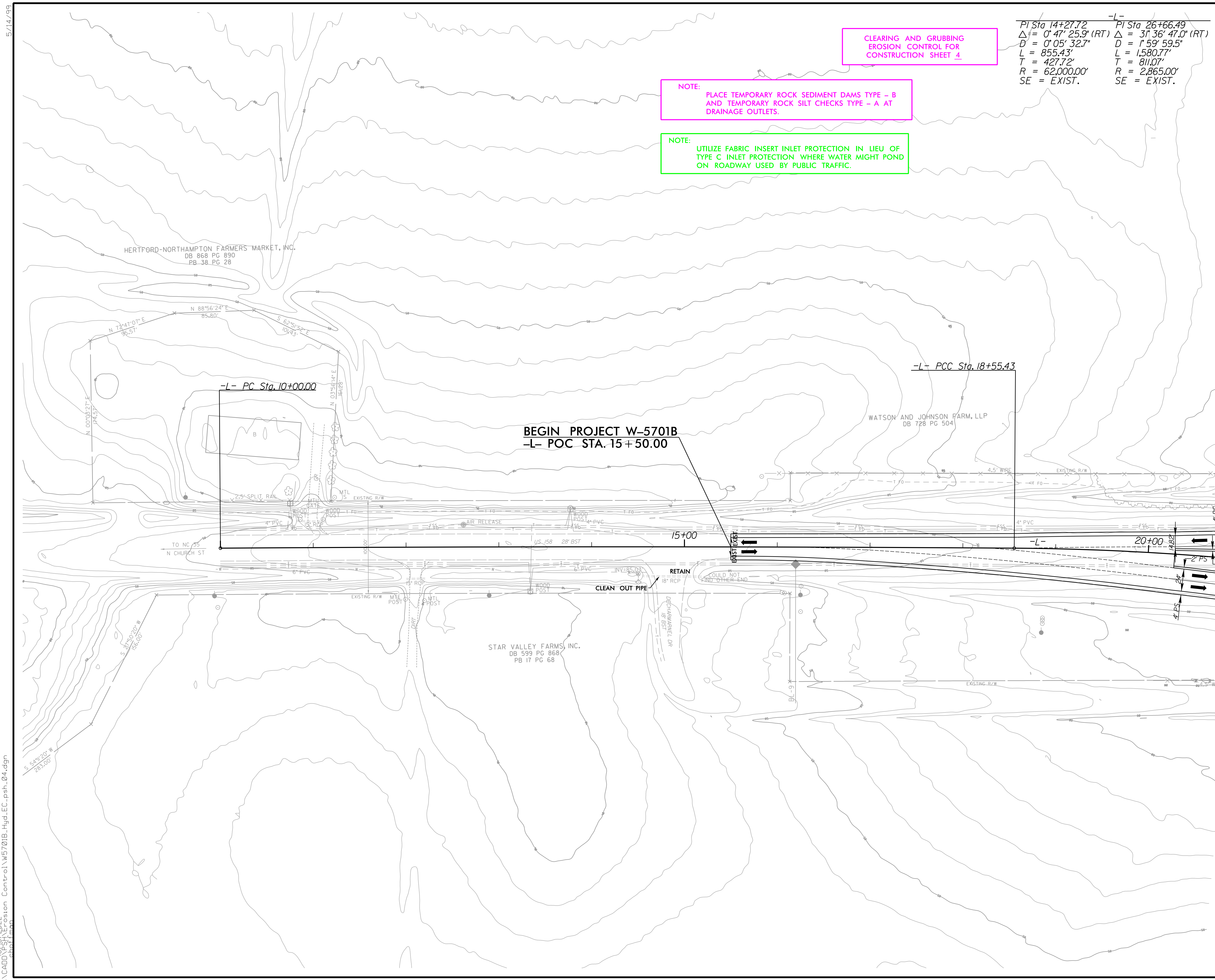
PROJECT REFERENCE NO.	SHEET NO.
W-5701B	EC-04/CONST.04
R/W SHEET NO.	
ROADWAY DESIGN ENGINEER	HYDRAULICS ENGINEER

$PI\ Sta\ 14+27.72$ $PI\ Sta\ 26+66.49$
 $\Delta = 0^\circ 47' 25.9" (RT)$ $\Delta = 31^\circ 36' 47.0" (RT)$
 $D = 0^\circ 05' 32.7"$ $D = 1^\circ 59' 59.5"$
 $L = 855.43'$ $L = 1,580.77'$
 $T = 427.72'$ $T = 811.07'$
 $R = 62,000.00'$ $R = 2,865.00'$
 $SE = EXIST.$ $SE = EXIST.$

CLEARING AND GRUBBING
EROSION CONTROL FOR
CONSTRUCTION SHEET 4

NOTE:
PLACE TEMPORARY ROCK SEDIMENT DAMS TYPE - B
AND TEMPORARY ROCK SILT CHECKS TYPE - A AT
DRAINAGE OUTLETS.

NOTE:
UTILIZE FABRIC INSERT INLET PROTECTION IN LIEU OF
TYPE C INLET PROTECTION WHERE WATER MIGHT POND
ON ROADWAY USED BY PUBLIC TRAFFIC.



MATCH TO SHEET 5 -L- STA. 21+00.00

NAD 83/NA 2011

C:\Users\jacob\OneDrive\Documents\Projects\W5701B_Hyd_EC_psh_04.dgn
 5/14/2022 10:52:22 AM
 jacob

RK&K
 P: (919) 878-9560
 8601 Six Forks Road, Forum 1, Suite 700
 Raleigh, North Carolina 27615-3960
 NC License No. F-0112
 Engineers | Construction Managers | Planners | Scientists
 www.rkk.com
 Responsive People | Creative Solutions