
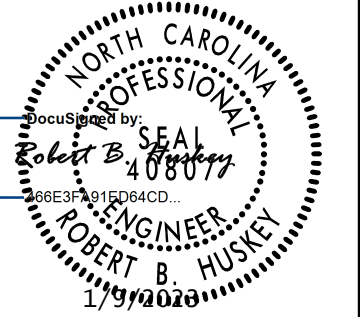
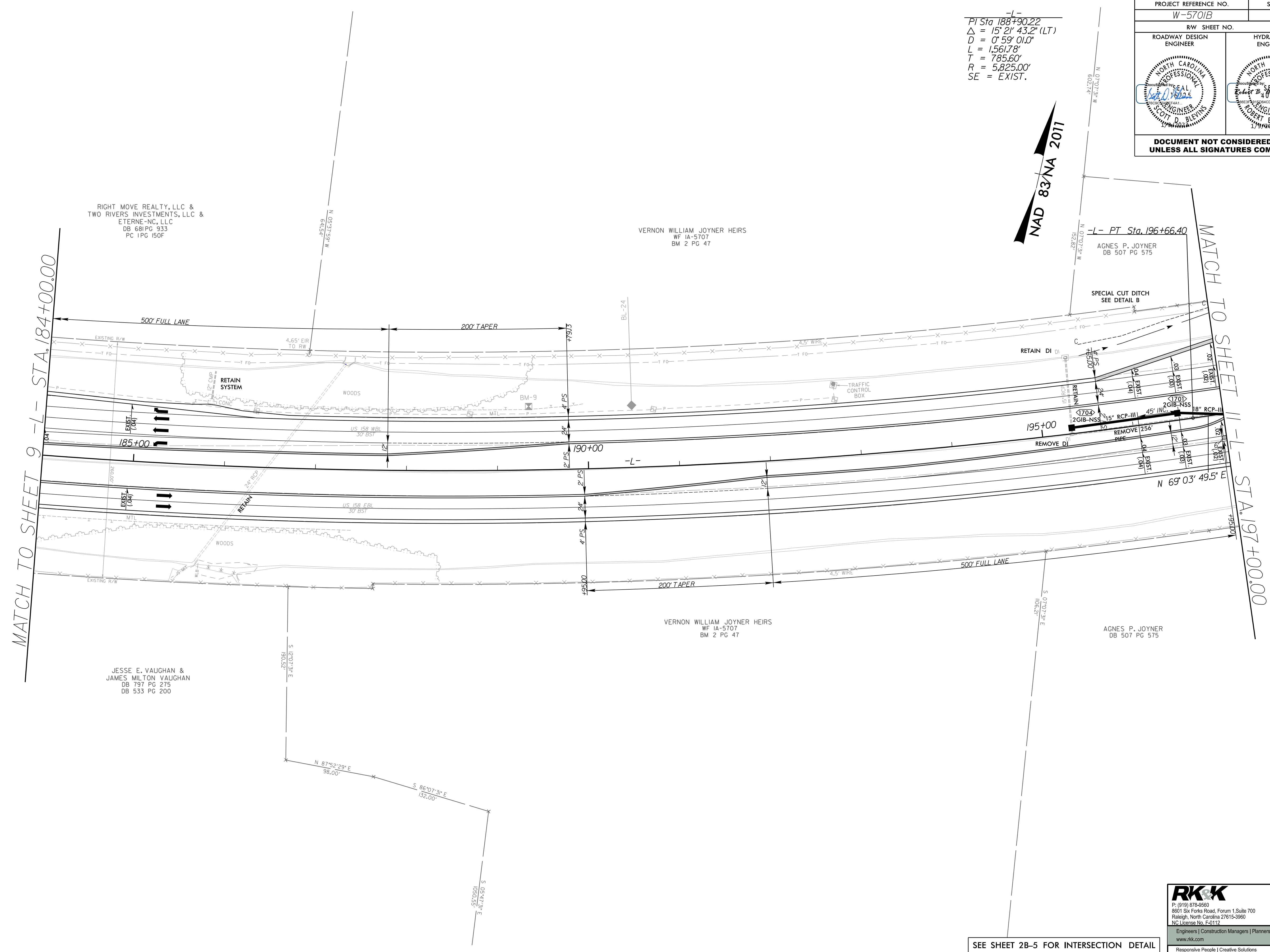


5/14/99
 1/9/2007
 R:\Road\2007\2007-01\W5701B_Rdy_psh_10.dgn

-L-
 PI Sta 188+90.22
 $\Delta = 15^\circ 21' 43.2''$ (LT)
 $D = 0^\circ 59' 01.0''$
 $L = 1,561.78'$
 $T = 785.60'$
 $R = 5,825.00'$
 SE = EXIST.

PROJECT REFERENCE NO. W-5701B		SHEET NO. 10	
ROADWAY DESIGN ENGINEER		HYDRAULICS ENGINEER	
			
DOCUMENT NOT CONSIDERED FINAL UNLESS ALL SIGNATURES COMPLETED			



RIGHT MOVE REALTY, LLC &
 TWO RIVERS INVESTMENTS, LLC &
 ETERNE-NC, LLC
 DB 681PG 933
 PC 1PG 150F

VERNON WILLIAM JOYNER HEIRS
 WF IA-5707
 BM 2 PG 47

JESSE E. VAUGHAN &
 JAMES MILTON VAUGHAN
 DB 797 PG 275
 DB 533 PG 200

VERNON WILLIAM JOYNER HEIRS
 WF IA-5707
 BM 2 PG 47

AGNES P. JOYNER
 DB 507 PG 575

SEE SHEET 2B-5 FOR INTERSECTION DETAIL



P: (919) 878-0660
 8601 Six Forks Road, Forum 1, Suite 700
 Raleigh, North Carolina 27615-3960
 NC License No. F-0112
 Engineers | Construction Managers | Planners | Scientists
 www.rkk.com
 Responsive People | Creative Solutions