

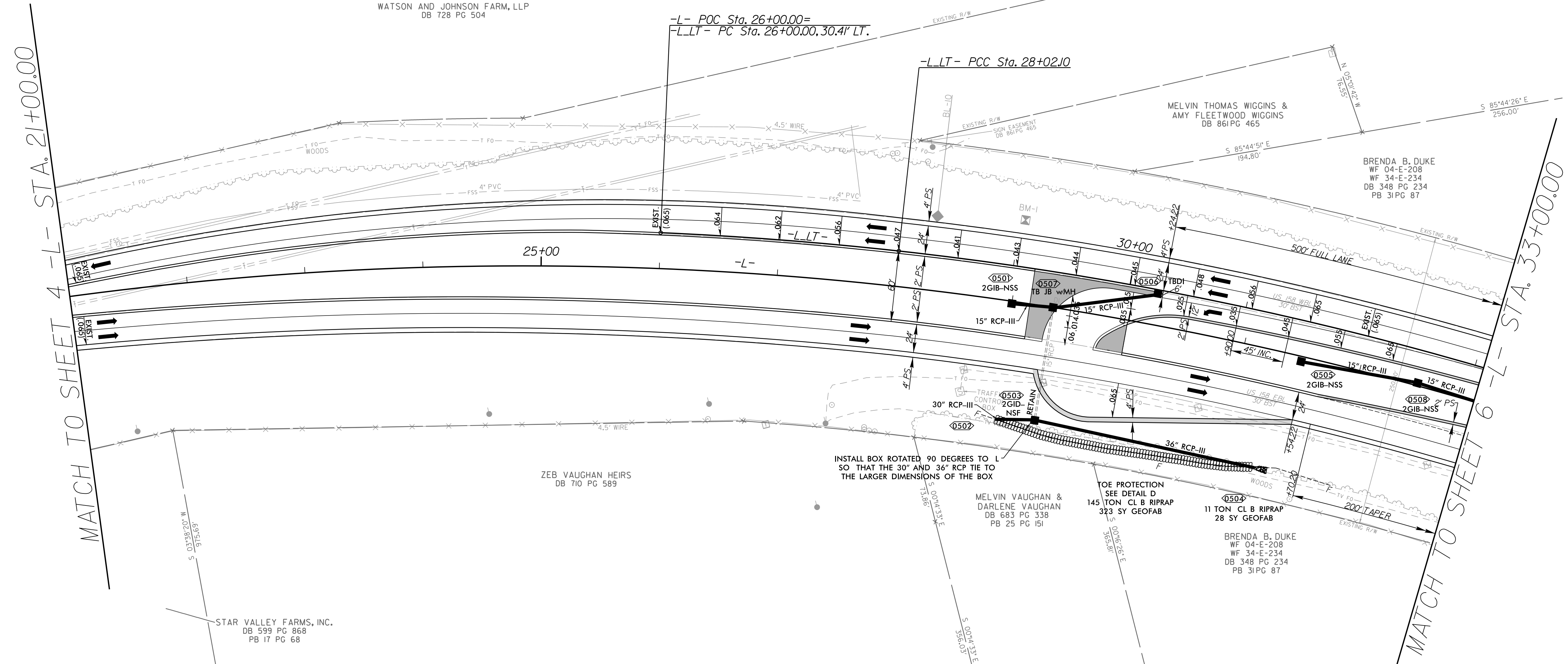
5/14/99

R:\Road\2023\05\W5701B_Rdy_esh_05.dgn

-L-LT-		-L-	
PI Sta 27+01.09	PI Sta 31+24.86	PI Sta 26+66.49	
$\Delta = 3' 46' 07.9" (RT)$	$\Delta = 12' 43' 22.8" (RT)$	$\Delta = 3' 36' 47.0" (RT)$	
$D = 1' 51' 53.3"$	$D = 1' 58' 44.9"$	$D = 1' 59' 59.5"$	
$L = 202.10'$	$L = 642.86'$	$L = 1,580.77'$	
$T = 101.09'$	$T = 322.76'$	$T = 811.07'$	
$R = 3,072.47'$	$R = 2,895.00'$	$R = 2,865.00'$	
SE = EXIST.	SE = EXIST.	SE = EXIST.	

PROJECT REFERENCE NO. W-5701B	SHEET NO. 5
ROADWAY DESIGN ENGINEER	HYDRAULICS ENGINEER
DOCUMENT NOT CONSIDERED FINAL UNLESS ALL SIGNATURES COMPLETED	

NAD 83/NA 2011



MATCH TO SHEET 4 -L- STA. 21+00.00

MATCH TO SHEET 6 -L- STA. 33+00.00

SEE SHEET 12 FOR -L-LT- PROFILE
SEE SHEET 2B-1 FOR INTERSECTION DETAIL

RK&K
 P: (919) 878-0560
 8601 Six Forks Road, Forum 1, Suite 700
 Raleigh, North Carolina 27615-3960
 NC License No. F-0112
 Engineers | Construction Managers | Planners | Scientists
 www.rkk.com
 Responsive People | Creative Solutions