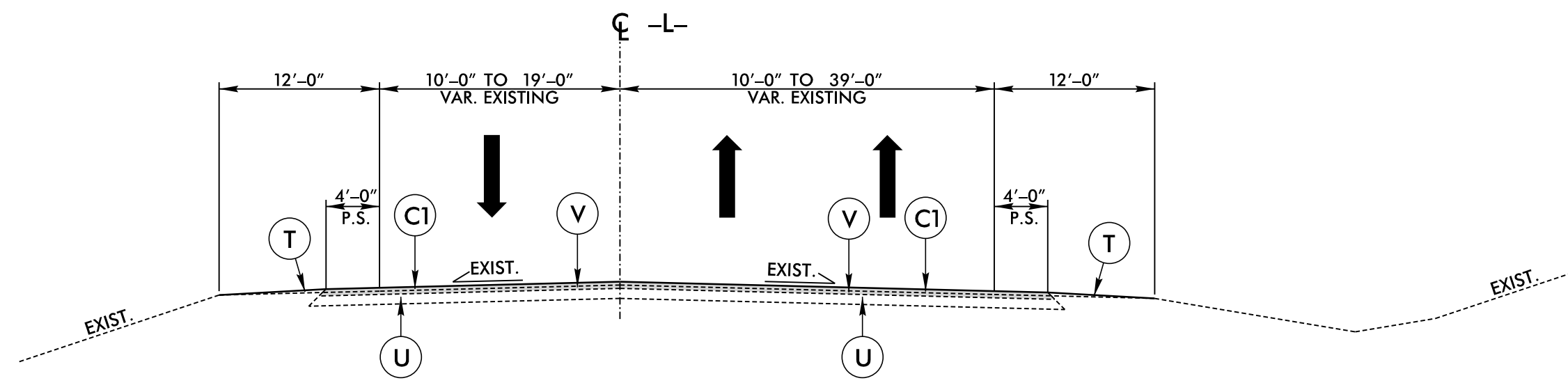


5/14/99

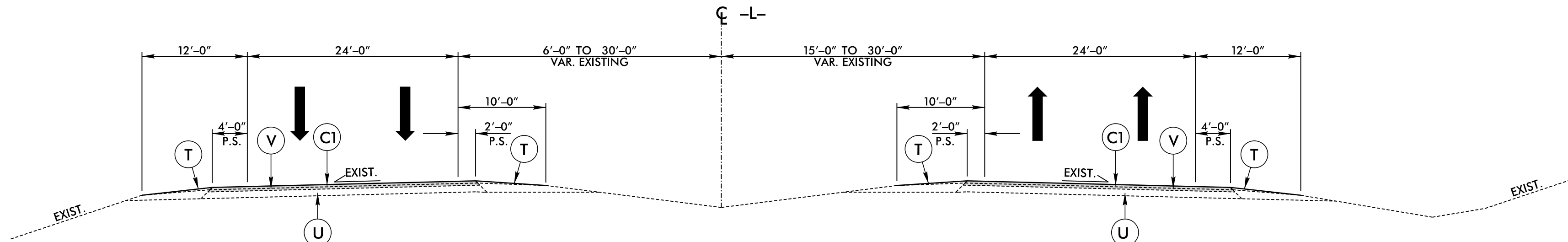
FINAL PAVEMENT SCHEDULE	
C1	PROP. APPROX. 1.5" ASPHALT CONCRETE SURFACE COURSE, TYPE S9.5C, AT AN AVERAGE RATE OF 168 LBS PER SQ. YARD.
C2	PROP. VAR. DEPTH ASPHALT CONCRETE SURFACE COURSE, TYPE S9.5C, AT AN AVERAGE RATE OF 112 LBS. PER SQ. YD. PER 1" DEPTH TO BE PLACED IN LAYERS NOT LESS THAN 1.5" OR GREATER THAN 2.0" IN DEPTH.
D1	PROP. APPROX. 4" ASPHALT CONCRETE INTERMEDIATE COURSE, TYPE I19.0C, AT AN AVERAGE RATE OF 456 LBS PER SQ. YARD.
D2	PROP. VAR. DEPTH ASPHALT CONCRETE INTERMEDIATE COURSE, TYPE I19.0C, AT AN AVERAGE RATE OF 114 LBS. PER SQ. YD. PER 1" DEPTH TO BE PLACED IN LAYERS NOT LESS THAN 2.5" IN DEPTH OR GREATER THAN 4" IN DEPTH.
E1	PROP. APPROX. 4" ASPHALT CONCRETE BASE COURSE, TYPE B25.0C, AT AN AVERAGE RATE OF 456 LBS. PER SQ. YARD.
E2	PROP. VAR. DEPTH ASPHALT CONCRETE BASE COURSE, TYPE B25.0C, AT AN AVERAGE RATE OF 114 LBS. PER SQ. YD. PER 1" DEPTH TO BE PLACED IN LAYERS NOT LESS THAN 3" IN DEPTH OR GREATER THAN 5.5" IN DEPTH.
R1	5' MONOLITHIC CONCRETE ISLAND (KEYED IN)
R2	SHOULDER BERM GUTTER
T	EARTH MATERIAL
U	EXISTING PAVEMENT
V	MILLING 1.5" DEPTH
W	WEDGING

NOTES: ALL PAVEMENT EDGE SLOPES ARE 1:1 UNLESS OTHERWISE NOTED. SEE PLANS FOR LOCATION OF AUXILIARY LANES, CONCRETE ISLANDS, AND TAPERS.

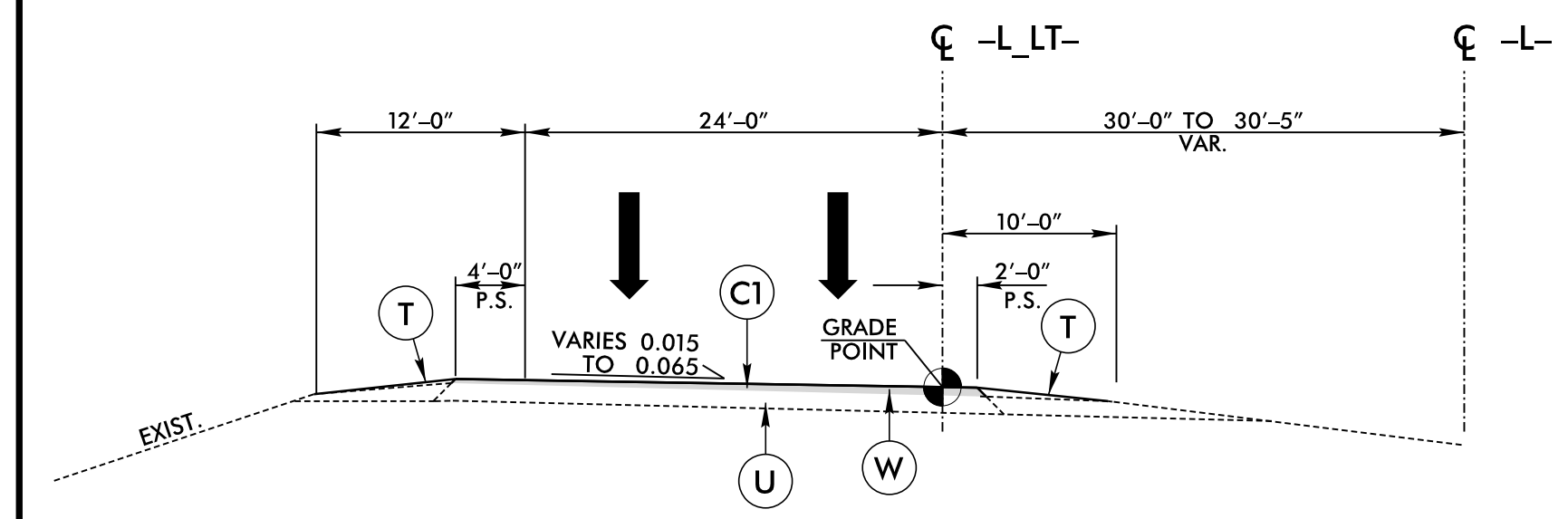
PROJECT REFERENCE NO. W-5701B	SHEET NO. 2A-1
RW SHEET NO.	
ROADWAY DESIGN ENGINEER	PAVEMENT DESIGN ENGINEER
DOCUMENT NOT CONSIDERED FINAL UNLESS ALL SIGNATURES COMPLETED	



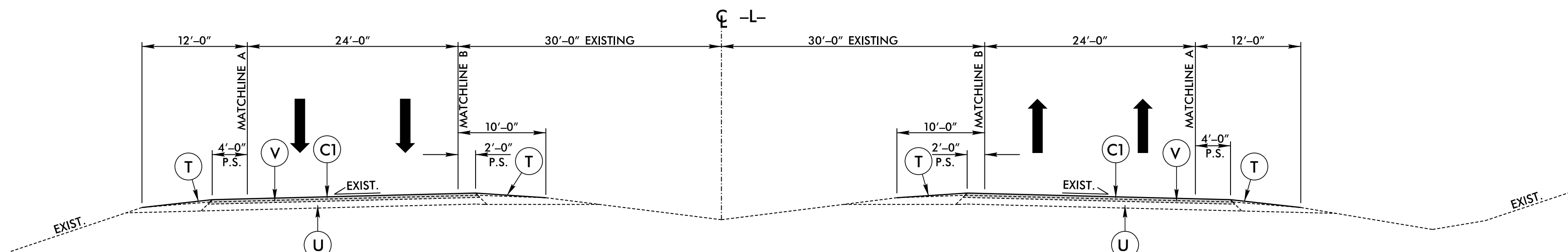
TYPICAL SECTION NO. 1
USE TYPICAL SECTION NO. 1
-L- STA. 15+50.00 TO 20+28.61



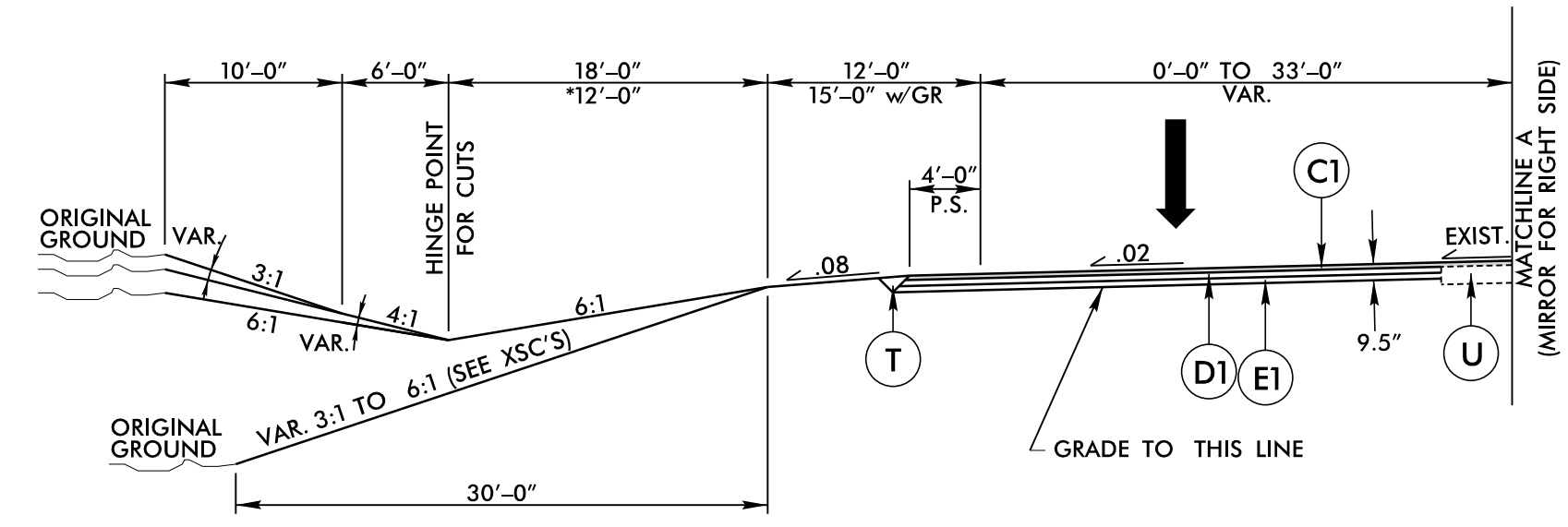
TYPICAL SECTION NO. 2
USE TYPICAL SECTION NO. 2
-L- STA. 20+28.61 TO 28+00.00



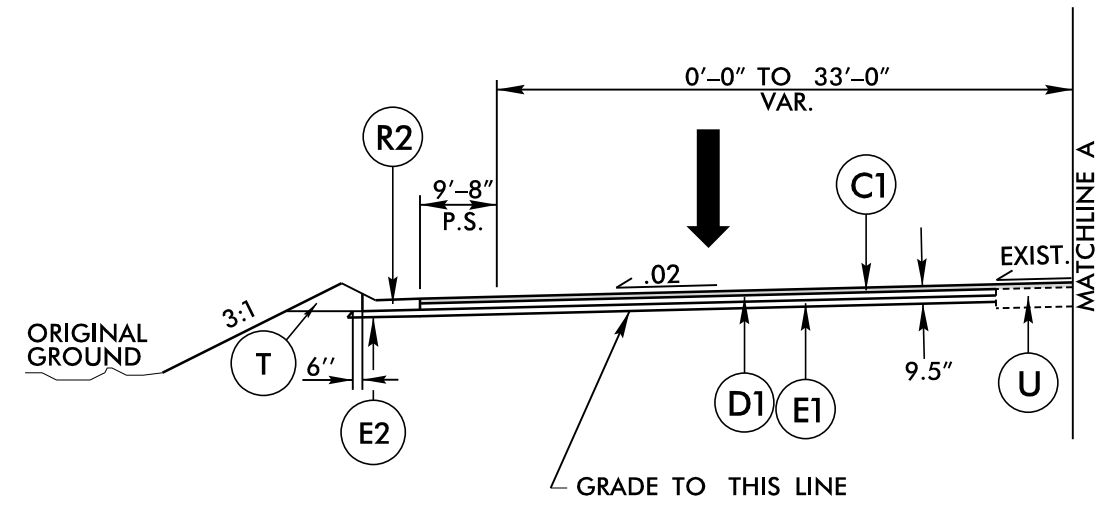
TYPICAL SECTION NO. 2-A
USE IN CONJUNCTION WITH TYPICAL SECTION NO. 2 & 3
-L- STA. 26+50.00 TO 31+90.00 LT.



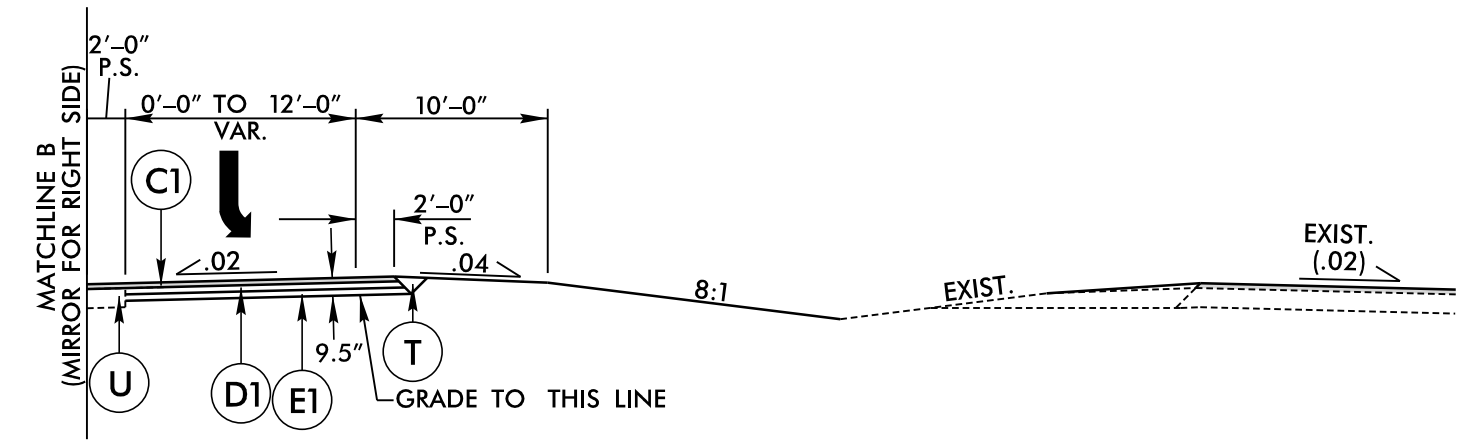
TYPICAL SECTION NO. 3
USE TYPICAL SECTION NO. 3
-L- STA. 28+00.00 TO 52+00.00
-L- STA. 159+00.00 TO 199+00.00



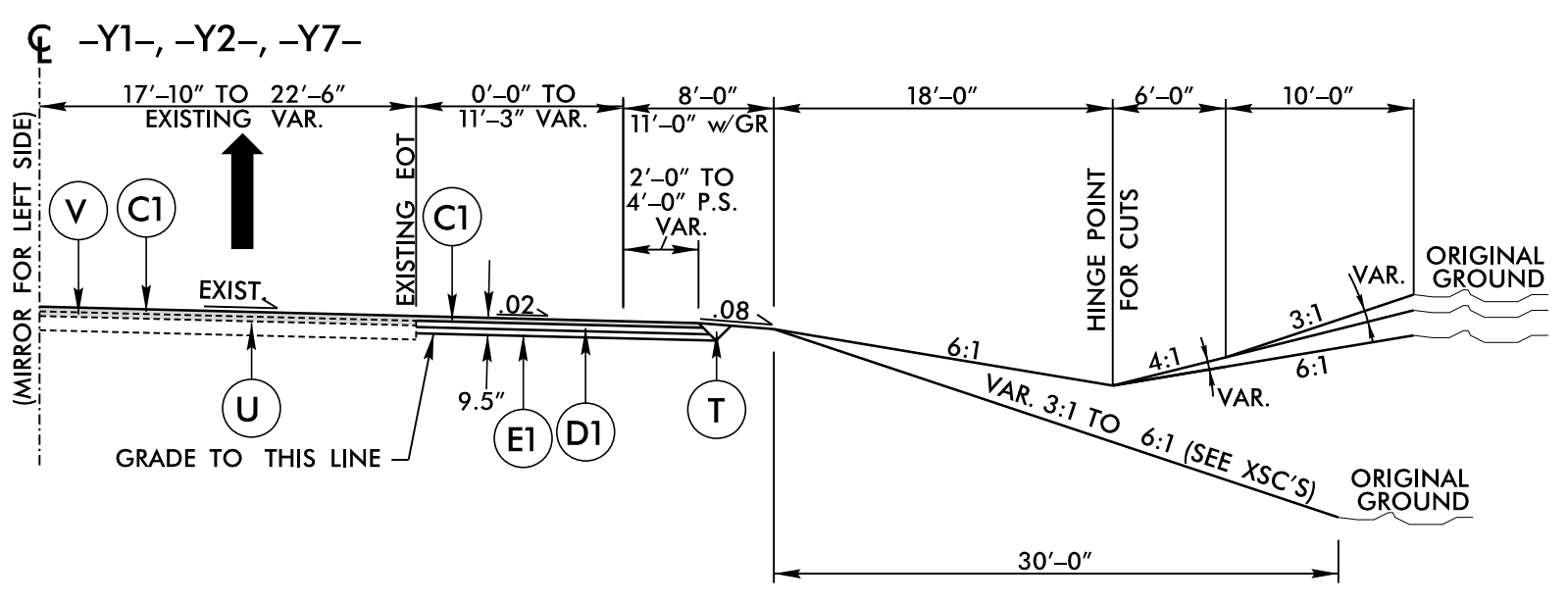
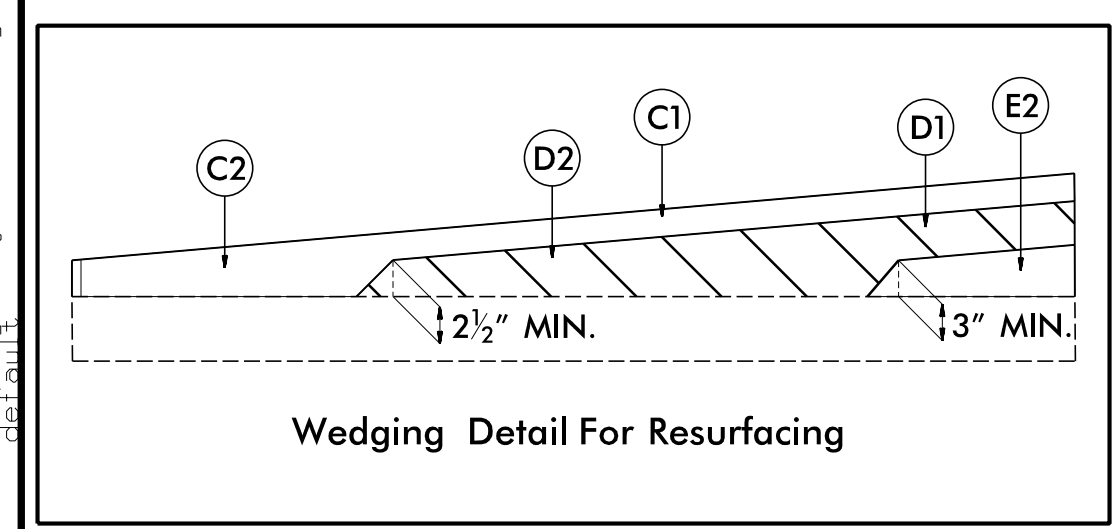
TYPICAL SECTION NO. 3-A
USE IN CONJUNCTION WITH TYPICAL SECTION NO. 3
* -L- STA. 29+30.11 TO 31+54.22 RT.
* -L- STA. 162+06.99 TO 164+30.00 RT.
* -L- STA. 172+84.09 TO 175+07.10 RT.
* -L- STA. 195+65.00 TO 197+88.37 LT.



TYPICAL SECTION NO. 3-B
USE IN CONJUNCTION WITH TYPICAL SECTION NO. 3
-L- STA. 48+69.22 TO 51+76.36 LT.



TYPICAL SECTION NO. 3-C
USE IN CONJUNCTION WITH TYPICAL SECTION NO. 3
-L- STA. 30+24.22 TO 37+24.22 LT.
-L- STA. 31+70.20 TO 38+70.20 RT.
-L- STA. 40+76.70 TO 47+76.70 LT.
-L- STA. 42+49.22 TO 49+49.22 RT.
-L- STA. 163+00.00 TO 170+00.00 LT.
-L- STA. 164+87.10 TO 171+87.10 RT.
-L- STA. 173+97.10 TO 180+67.10 LT.
-L- STA. 174+19.13 TO 180+69.13 RT.
-L- STA. 182+79.13 TO 189+79.13 LT.
-L- STA. 189+95.00 TO 196+95.00 RT.



TYPICAL SECTION NO. 4
USE TYPICAL SECTION NO. 4
-Y1- STA. 12+55.61 TO 13+87.59 RT.
-Y2- STA. 10+11.10 TO 11+31.86 LT.
-Y7- STA. 12+61.63 TO 13+85.99 RT.

USE C1 AT ALL Y LINE RESURFACING LOCATION
-Y1- STA. 10+00.00 TO 12+55.61
-Y2- STA. 11+31.86 TO 14+95.56
-Y6- STA. 10+65.57 TO 11+51.07
-Y7- STA. 8+93.63 TO 12+61.63
-Y7- STA. 14+81.04 TO 19+64.21

RK&K
P: (919) 878-0560
8601 Six Forks Road, Forum 1, Suite 700
Raleigh, North Carolina 27615-3960
NC License No. F-0112
Engineers | Construction Managers | Planners | Scientists
www.rkk.com
Responsive People | Creative Solutions

I:\9\2023\Pro-J\W5701B_Rdy_tjup.dgn