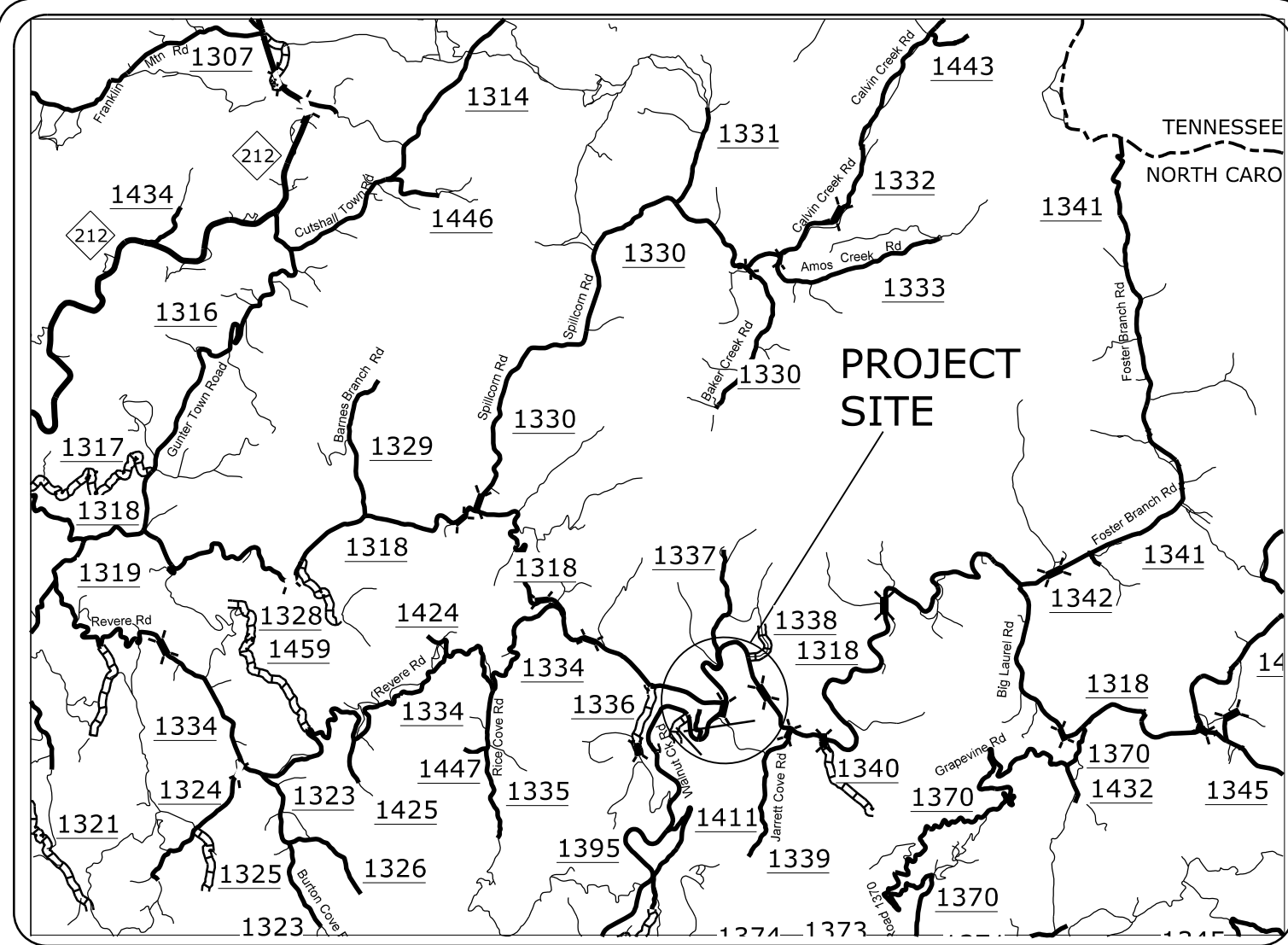


**TIP PROJECT: B-5989**

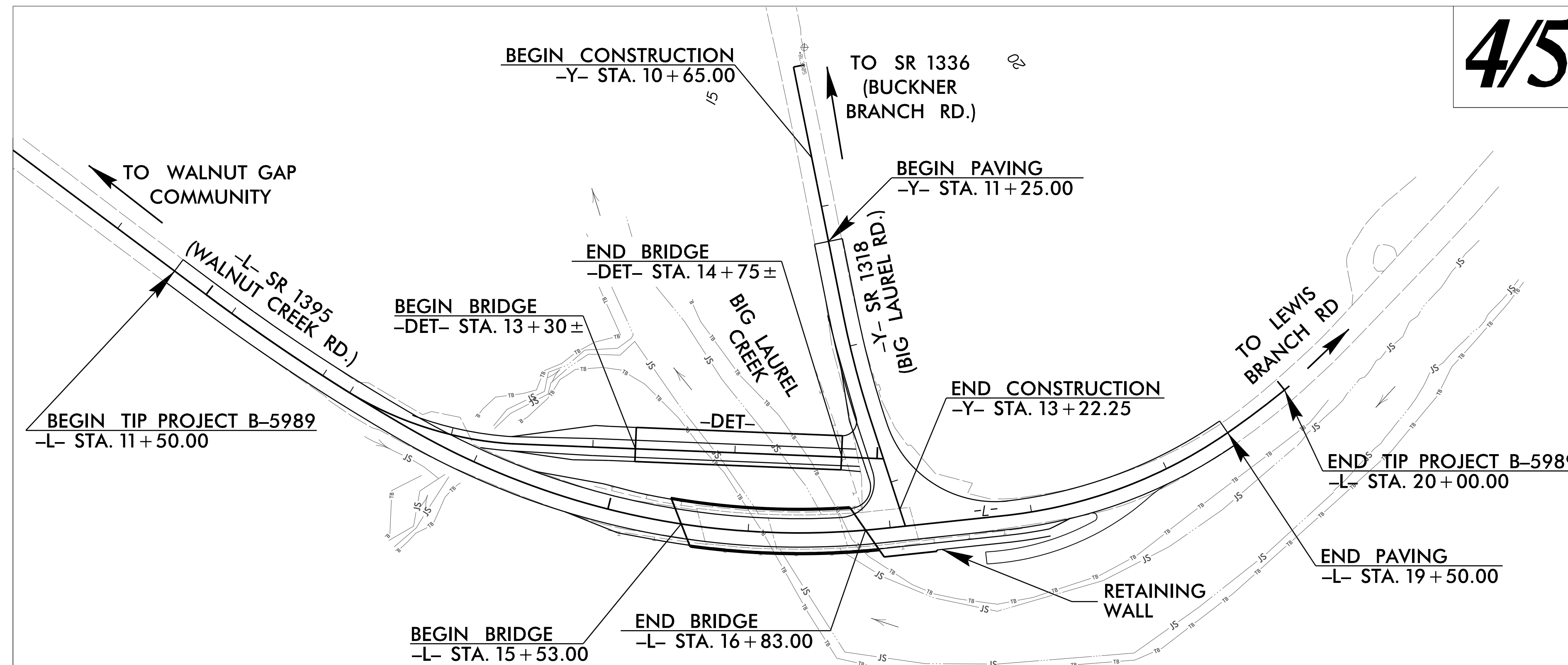


**VICINITY MAP**  
NOT TO SCALE

STATE OF NORTH CAROLINA  
DIVISION OF HIGHWAYS  
PLAN FOR PROPOSED  
HIGHWAY EROSION CONTROL  
**MADISON COUNTY**

**LOCATION: BRIDGE NO. 71 ON SR 1395 (WALNUT CREEK RD)  
OVER BIG LAUREL CREEK**

**TYPE OF WORK: GRADING, DRAINAGE, PAVING, RETAINING WALL  
AND STRUCTURE.**



STATE	STATE PROJECT REFERENCE NO.	SHEET NO.	TOTAL SHEETS
N.C.	B-5989	EC-1	
STATE PROJ. NO.	F.A. PROJ. NO.	DESCRIPTION	

**EROSION AND SEDIMENT CONTROL MEASURES**

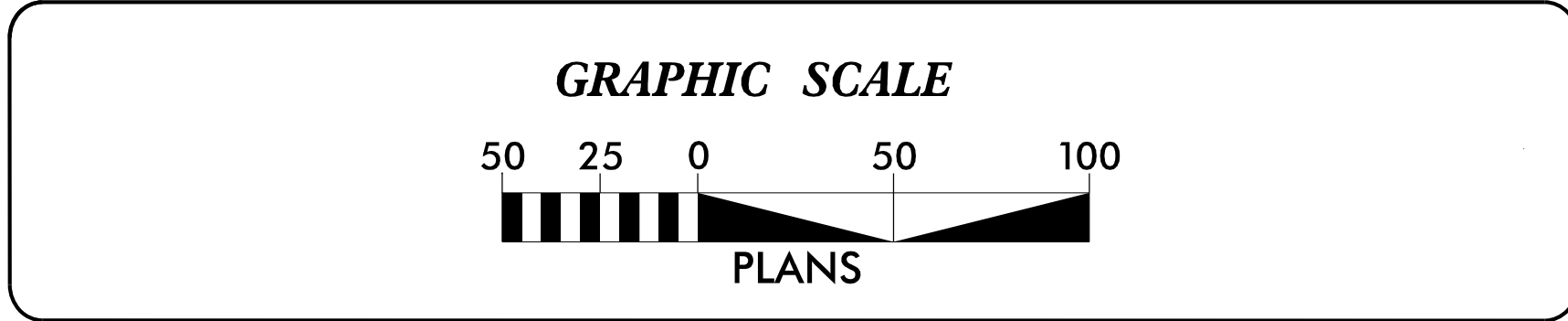
Std. #	Description	Symbol
1630.03	Temporary Silt Ditch	TD
1630.05	Temporary Diversion	TD
1605.01	Temporary Silt Fence	III III III
1606.01	Special Sediment Control Fence	III III III
1622.01	Temporary Berms and Slope Drains	III III III
1630.02	Silt Basin Type B	III III III
1633.01	Temporary Rock Silt Check Type-A	III III III
	Temporary Rock Silt Check Type-A with Matting and Polyacrylamide (PAM)	III III III
1633.02	Temporary Rock Silt Check Type-B	III III III
	Wattle/Coir Fiber Wattle	III III III
	Wattle/Coir Fiber Wattle with Polyacrylamide (PAM)	III III III
1634.01	Temporary Rock Sediment Dam Type-A	III III III
1634.02	Temporary Rock Sediment Dam Type-B	III III III
1635.01	Rock Pipe Inlet Sediment Trap Type-A	III III III
1635.02	Rock Pipe Inlet Sediment Trap Type-B	III III III
1630.04	Stilling Basin	III III III
1630.06	Special Stilling Basin	III III III
	Rock Inlet Sediment Trap:	
1632.01	Type A	A
1632.02	Type B	B
1632.03	Type C	C
	Skimmer Basin	III III III
	Tiered Skimmer Basin	III III III
	Infiltration Basin	III III III

THIS PROJECT CONTAINS EROSION CONTROL PLANS FOR CLEARING AND GRUBBING PHASE OF CONSTRUCTION.

ENVIRONMENTALLY SENSITIVE AREA(S) EXIST ON THIS PROJECT  
Refer To E. C. Special Provisions for Special Considerations.

HIGH QUALITY WATER(S) EXIST ON THIS PROJECT  
High Quality Water Zone(s) Exist  
From Sta. 13+18 -L- to Sta. 20+05 -L-  
Refer To E. C. Special Provisions for Special Considerations.

THIS PROJECT HAS BEEN DESIGNED TO SENSITIVE WATERSHED STANDARDS.



THESE EROSION AND SEDIMENT CONTROL PLANS COMPLY WITH THE APPLICABLE REGULATIONS SET FORTH BY THE NCG-01000 GENERAL CONSTRUCTION PERMIT EFFECTIVE APRIL 1, 2019 AND ISSUED BY THE NORTH CAROLINA DEPARTMENT OF ENVIRONMENTAL QUALITY DIVISION OF WATER RESOURCES.

Prepared in the Office of:  
**320 Executive Ct.**  
**Hillsborough, NC 27278-8551**  
Voice: (919)732-3883  
Fax: (919)732-6776  
www.summitde.com

Designed by:  
**HE YANG** 4408  
NAME LEVEL III CERTIFICATION NO.

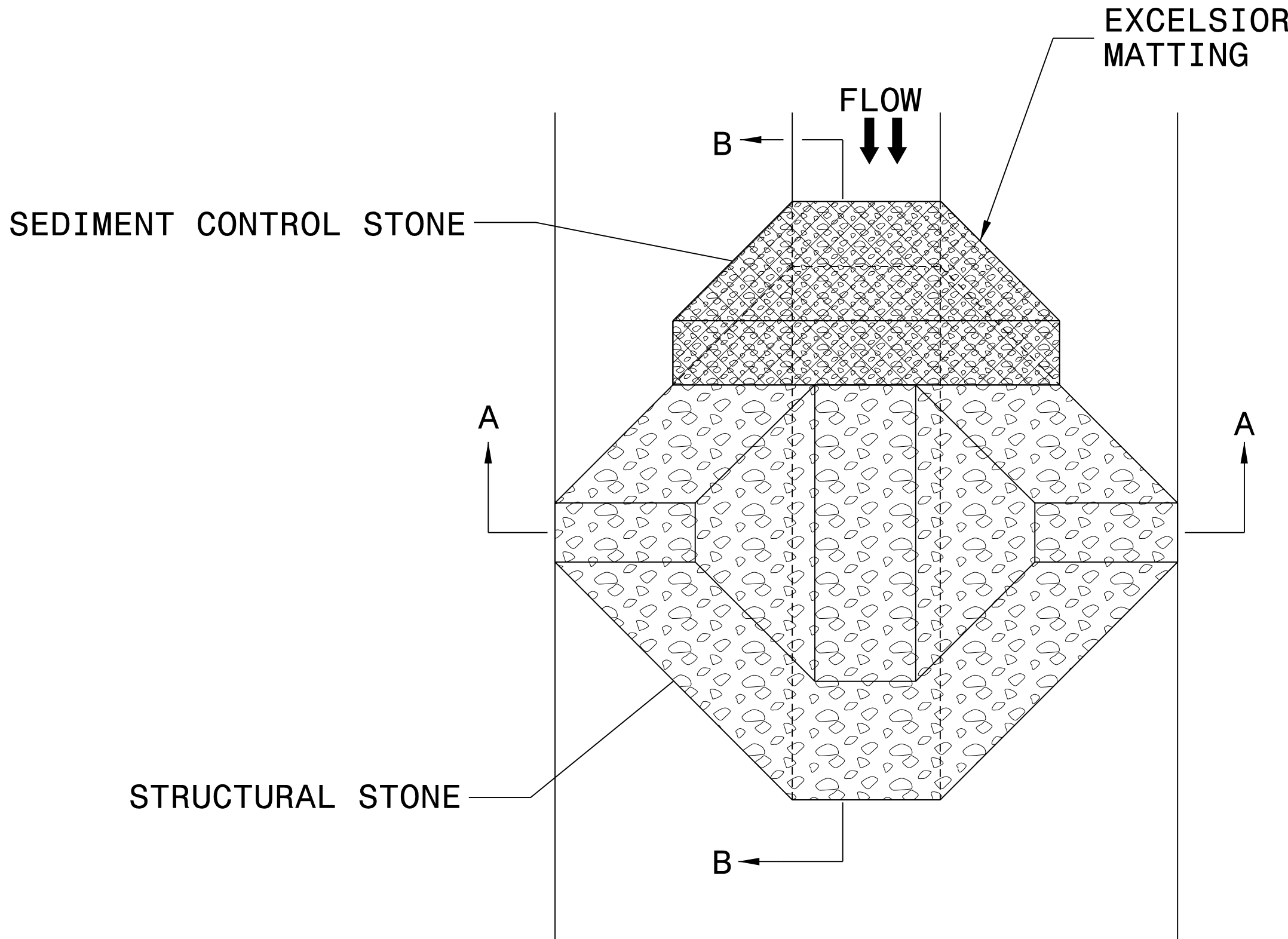
Roadway Standard Drawings

The following roadway english standards as appear in "Roadway Standard Drawings"- Roadway Design Unit - N. C. Department of Transportation - Raleigh, N. C., dated January 2018 and the latest revision thereto are applicable to this project and by reference hereby are considered a part of these plans.

1604.01 Railroad Erosion Control Detail	1632.01 Rock Inlet Sediment Trap Type A
1605.01 Temporary Silt Fence	1632.02 Rock Inlet Sediment Trap Type B
1606.01 Special Sediment Control Fence	1632.03 Rock Inlet Sediment Trap Type C
1607.01 Gravel Construction Entrance	1633.01 Temporary Rock Silt Check Type A
1622.01 Temporary Berms and Slope Drains	1633.02 Temporary Rock Silt Check Type B
1630.01 Riser Basin	1634.01 Temporary Rock Sediment Dam Type A
1630.02 Silt Basin Type B	1634.02 Temporary Rock Sediment Dam Type B
1630.03 Temporary Silt Ditch	1635.01 Rock Pipe Inlet Sediment Trap Type A
1630.04 Stilling Basin	1635.02 Rock Pipe Inlet Sediment Trap Type B
1630.05 Temporary Diversion	1640.01 Coir Fiber Baffle
1630.06 Special Stilling Basin	1645.01 Temporary Stream Crossing
1631.01 Matting Installation	

PROJECT REFERENCE NO. B-5989	SHEET NO. EC-2
ROADWAY DESIGN ENGINEER	HYDRAULICS ENGINEER

# TEMPORARY ROCK SILT CHECK TYPE 'A' WITH EXCELSIOR MATTING AND POLYACRYLAMIDE (PAM) DETAIL



PLAN

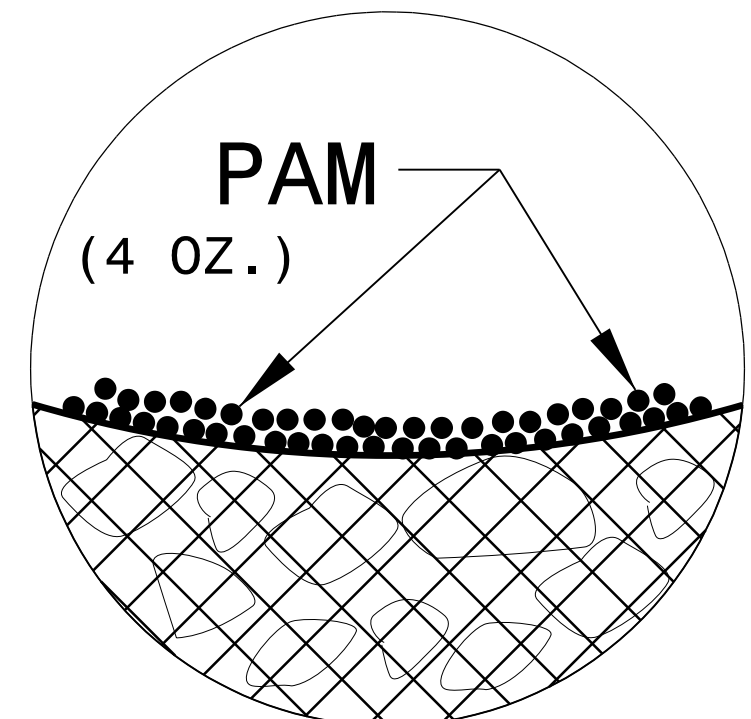
**NOTES:**

INSTALL TEMPORARY ROCK SILT CHECK TYPE A IN ACCORDANCE WITH ROADWAY STANDARD DRAWING NO. 1633.01.

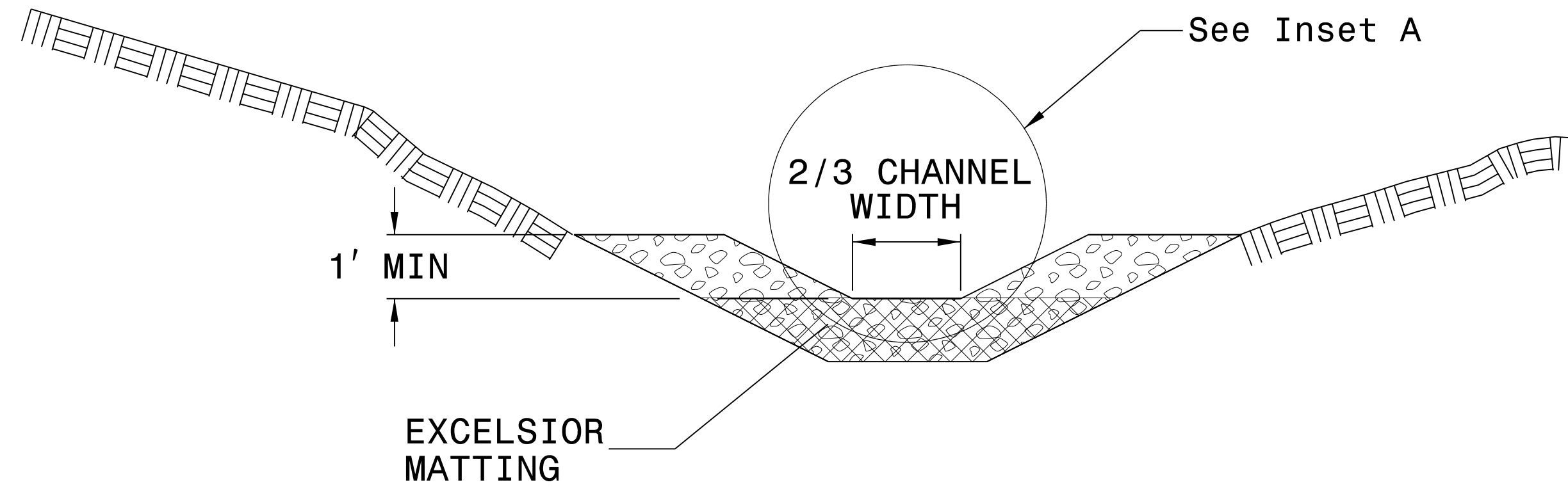
USE EXCELSIOR FOR MATTING MATERIAL AND ANCHOR MATTING SECTION AT TOP AND BOTTOM WITH CLASS B STONE.

PRIOR TO POLYACRYLAMIDE (PAM) APPLICATION, OBTAIN A SOIL SAMPLE FROM PROJECT LOCATION, AND FROM OFFSITE MATERIAL, AND ANALYZE FOR APPROPRIATE PAM FLOCCULANT TO BE APPLIED TO EACH ROCK SILT CHECK.

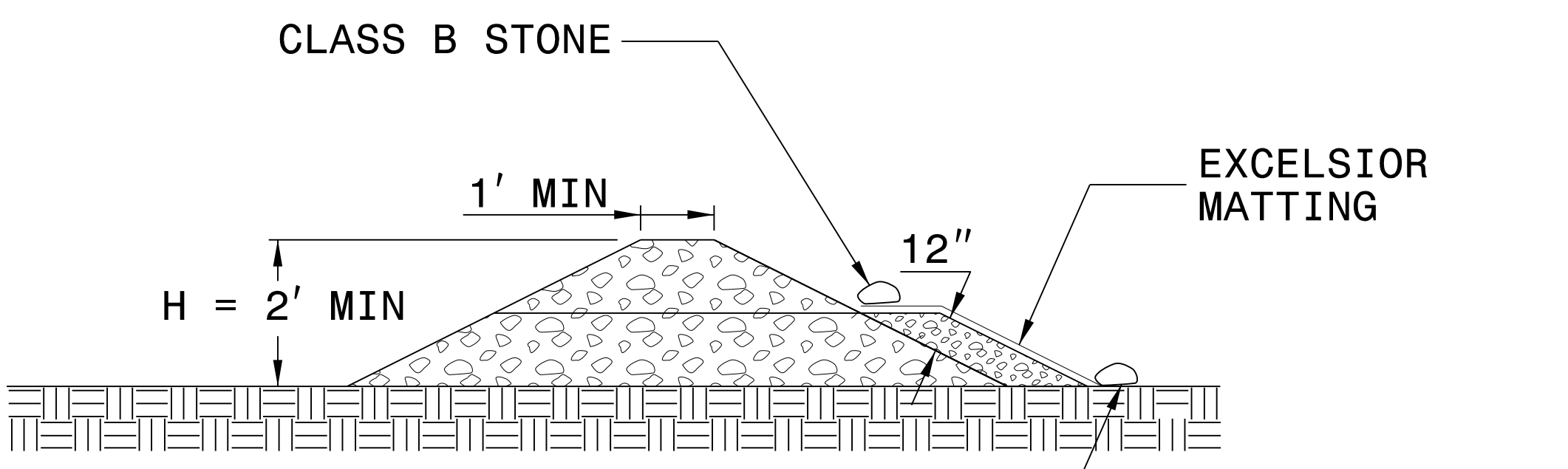
INITIALLY APPLY 4 OUNCES OF POLYACRYLAMIDE (PAM) TO TOP OF MATTING SECTION AND AFTER EVERY RAINFALL EVENT THAT EQUALS OR EXCEEDS 0.50 INCHES.



INSET A



SECTION A-A



SECTION B-B

NOT TO SCALE





DIVISION OF HIGHWAYS  
STATE OF NORTH CAROLINA

---



---

# ***SOIL STABILIZATION TIMEFRAMES***

PROJECT REFERENCE NO. <i>B-5989</i>	SHEET NO. <i>EC-3B</i>
ROADWAY DESIGN ENGINEER	HYDRAULICS ENGINEER
Prepared in the Office of:  SUMMIT NC FIRM LICENSE No: P-0339 320 Executive Ct. Hillsborough, NC 27218 (919) 732-5883 • (919) 732-6676 (FAX)	

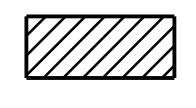
<i>SITE DESCRIPTION</i>	<i>STABILIZATION TIME</i>	<i>TIMEFRAME EXCEPTIONS</i>
PERIMETER DIKES, SWALES, DITCHES AND SLOPES	7 DAYS	NONE
HIGH QUALITY WATER (HQW) ZONES	7 DAYS	NONE
SLOPES STEEPER THAN 3:1	7 DAYS	IF SLOPES ARE 10' OR LESS IN LENGTH AND ARE NOT STEEPER THAN 2:1, 14 DAYS ARE ALLOWED.
SLOPES 3:1 OR FLATTER	14 DAYS	7 DAYS FOR SLOPES GREATER THAN 50' IN LENGTH.
ALL OTHER AREAS WITH SLOPES FLATTER THAN 4:1	14 DAYS	NONE, EXCEPT FOR PERIMETERS AND HQW ZONES.


**CLEARING AND GRUBBING EROSION CONTROL FOR CONSTRUCTION SHEET 4**

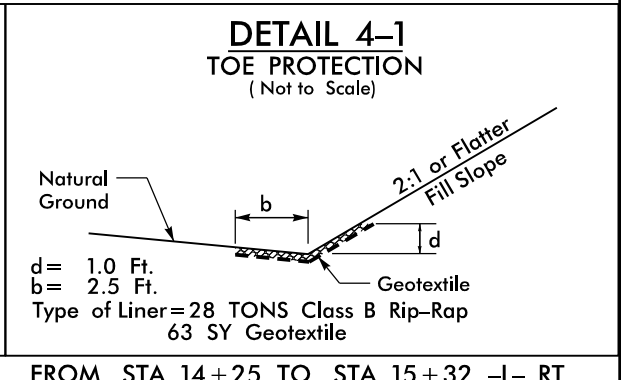
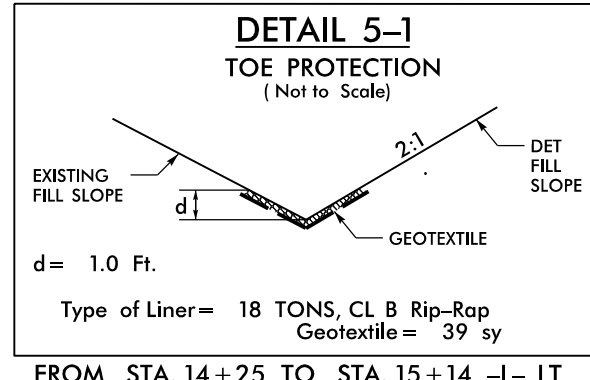
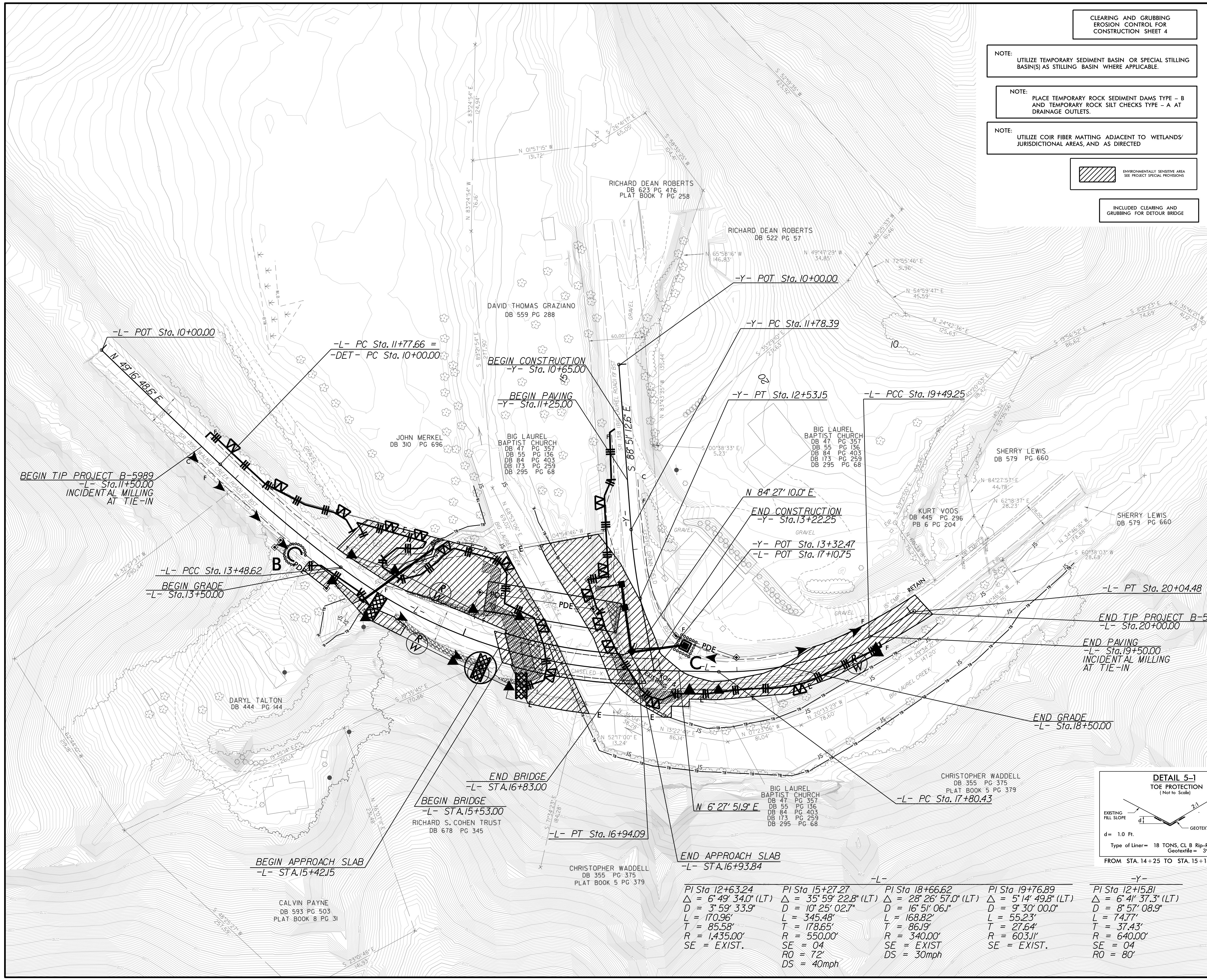
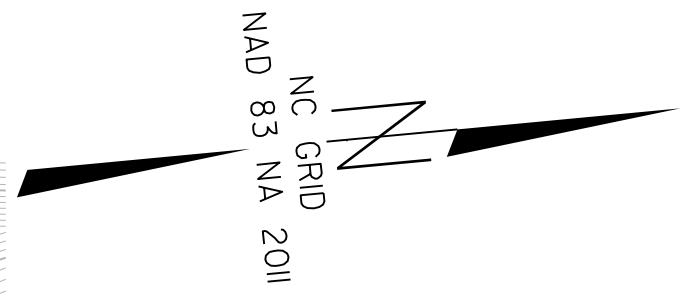
NOTE: UTILIZE TEMPORARY SEDIMENT BASIN OR SPECIAL STILLING BASIN(S) AS STILLING BASIN WHERE APPLICABLE.

NOTE: PLACE TEMPORARY ROCK SEDIMENT DAMS TYPE - B AND TEMPORARY ROCK SILT CHECKS TYPE - A AT DRAINAGE OUTLETS.

NOTE: UTILIZE COIR FIBER MATTING ADJACENT TO WETLANDS/JURISDICTIONAL AREAS, AND AS DIRECTED

 ENVIRONMENTALLY SENSITIVE AREA SEE PROJECT SPECIAL PROVISIONS


 INCLUDED CLEARING AND GRUBBING FOR DETOUR BRIDGE

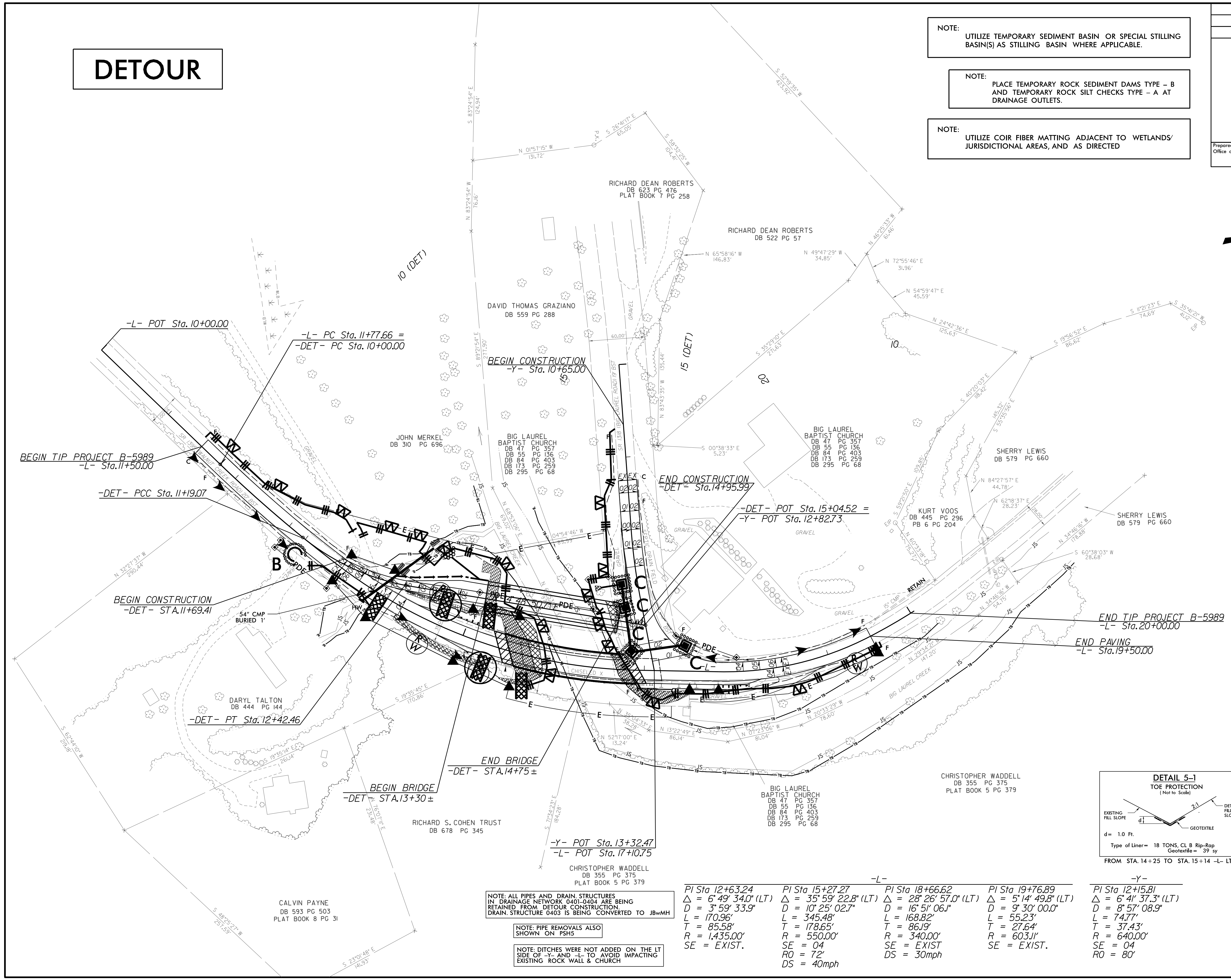
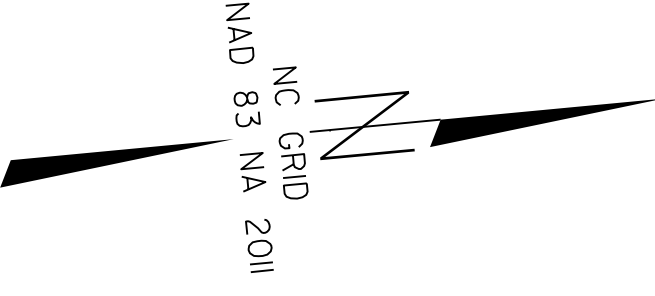


PI Sta	Δ	D	L	T	R	SE	RO
12+63.24	6° 49' 34.0" (LT)	3' 59' 33.9"	170.96'	85.58'	1,435.00'	EXIST.	
15+27.27	35° 59' 22.8" (LT)	10' 25' 02.7"	345.48'	178.65'	550.00'	04	72'
18+66.62	28° 26' 57.0" (LT)	16' 51' 06.1"	168.82'	86.19'	340.00'	EXIST	30mph
19+76.89	5° 14' 49.8" (LT)	9' 30' 00.0"	55.23'	27.64'	603.11'	EXIST.	
12+15.81	6° 41' 37.3" (LT)	8' 57' 08.9"	74.77'	37.43'	640.00'	04	80'

# DETOUR

- NOTE:** UTILIZE TEMPORARY SEDIMENT BASIN OR SPECIAL STILLING BASIN(S) AS STILLING BASIN WHERE APPLICABLE.
- NOTE:** PLACE TEMPORARY ROCK SEDIMENT DAMS TYPE - B AND TEMPORARY ROCK SILT CHECKS TYPE - A AT DRAINAGE OUTLETS.
- NOTE:** UTILIZE COIR FIBER MATTING ADJACENT TO WETLANDS/ JURISDICTIONAL AREAS, AND AS DIRECTED

PROJECT REFERENCE NO.	SHEET NO.
B-5989	EC-5/CONST. 5
	
<small>Prepared in the Office of:</small>	
<small>NC FIRM LICENSE: Not P-0359 504 Meadowslands Drive Hillsborough, NC 27278 (919) 332-3863 (919) 732-6676 (FAX)</small>	

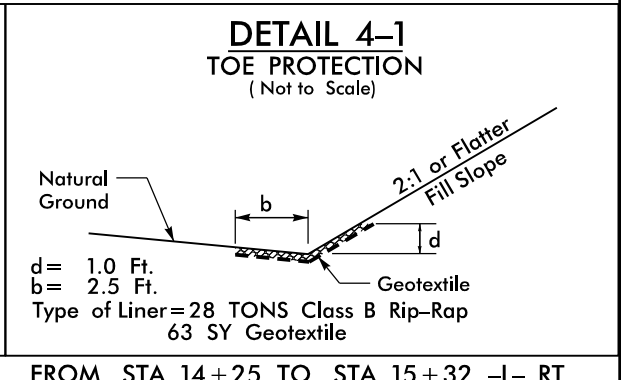
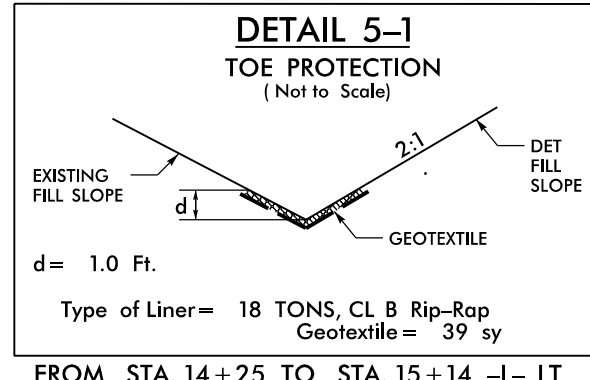


**NOTE:** ALL PIPES AND DRAIN STRUCTURES IN DRAINAGE NETWORK 0401-0404 ARE BEING RETAINED FROM DETOUR CONSTRUCTION. DRAIN STRUCTURE 0403 IS BEING CONVERTED TO JBWMH

**NOTE:** PIPE REMOVALS ALSO SHOWN ON PSHS

**NOTE:** DITCHES WERE NOT ADDED ON THE LT SIDE OF -Y- AND -L- TO AVOID IMPACTING EXISTING ROCK WALL & CHURCH

Station	PI Sta	Δ	D	L	T	R	SE	RO	DS
-L-	12+63.24	6' 49" 34.0" (LT)	3' 59" 33.9"	170.96'	85.58'	1,435.00'	EXIST.		
-L-	15+27.27	35' 59" 22.8" (LT)	10' 25" 02.7"	345.48'	178.65'	550.00'	04	72'	40mph
-L-	18+66.62	28' 26" 57.0" (LT)	16' 51" 06.1"	168.82'	86.19'	340.00'	EXIST		30mph
-L-	19+76.89	5' 14' 49.8" (LT)	9' 30" 00.0"	55.23'	27.64'	603.11'	EXIST.		
-Y-	12+15.81	6' 41' 37.3" (LT)	8' 57" 08.9"	74.77'	37.43'	640.00'	04	80'	



NOTE:  
UTILIZE TEMPORARY SEDIMENT BASIN OR SPECIAL STILLING BASIN(S) AS STILLING BASIN WHERE APPLICABLE.

NOTE:  
PLACE TEMPORARY ROCK SEDIMENT DAMS TYPE - B AND TEMPORARY ROCK SILT CHECKS TYPE - A AT DRAINAGE OUTLETS.

NOTE:  
UTILIZE COIR FIBER MATTING ADJACENT TO WETLANDS/ JURISDICTIONAL AREAS, AND AS DIRECTED

