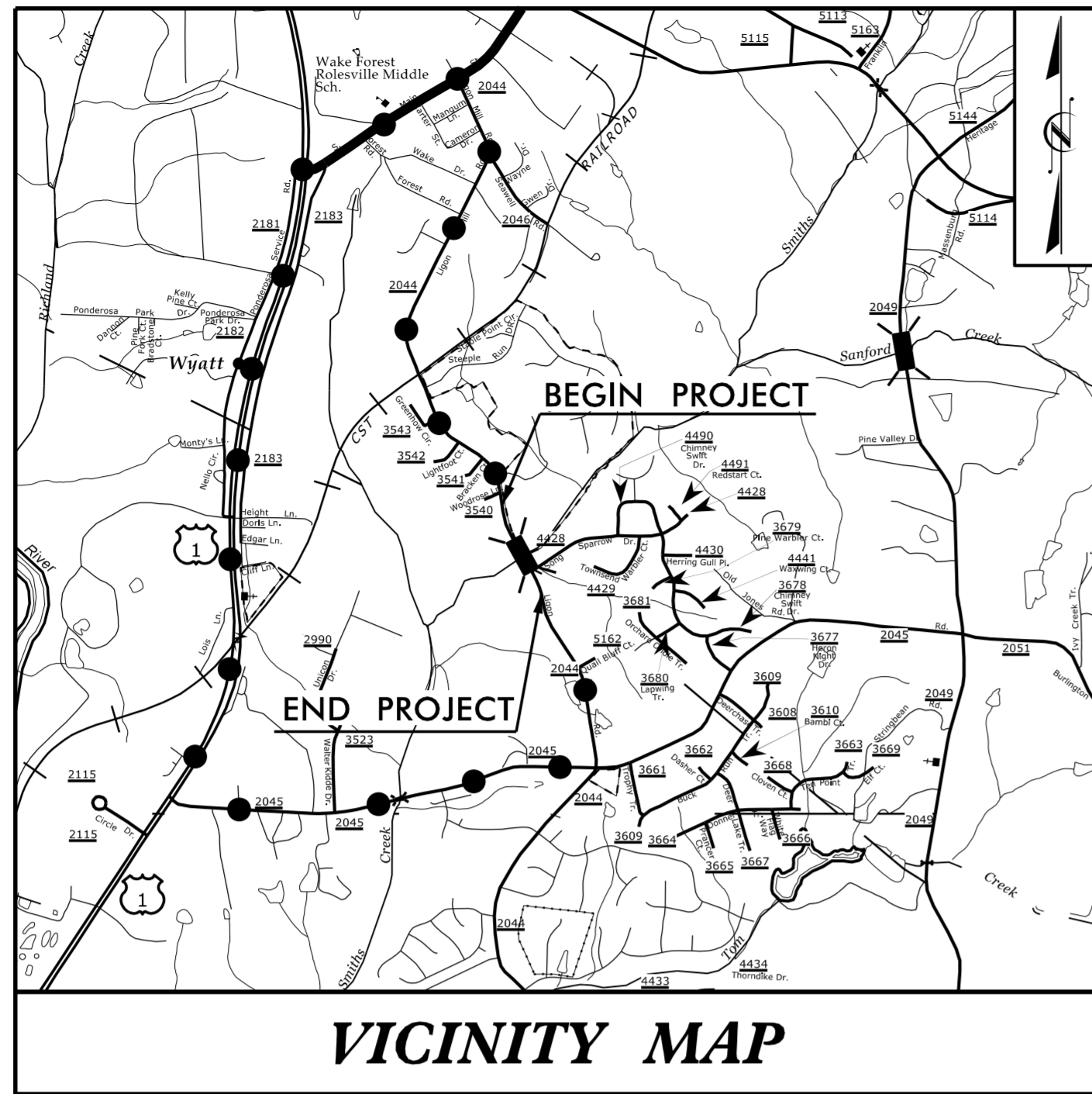


**This electronic collection of documents is provided
for the convenience of the user
and is Not a Certified Document –**

**The documents contained herein were originally issued
and sealed by the individuals whose names and license
numbers appear on each page, on the dates appearing
with their signature on that page.**

**This file or an individual page
shall not be considered a certified document.**

TIP PROJECT: B-5318



STATE OF NORTH CAROLINA
DIVISION OF HIGHWAYS

**UTILITIES BY OTHERS PLANS
WAKE COUNTY**

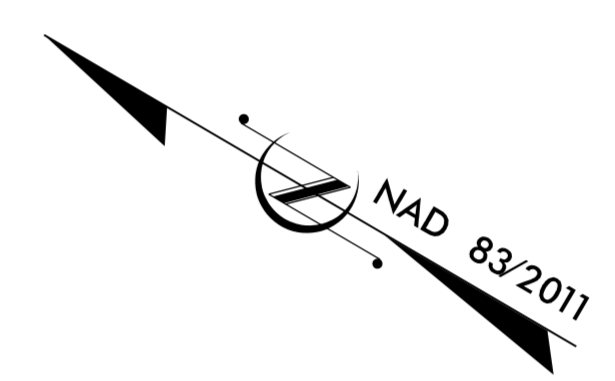
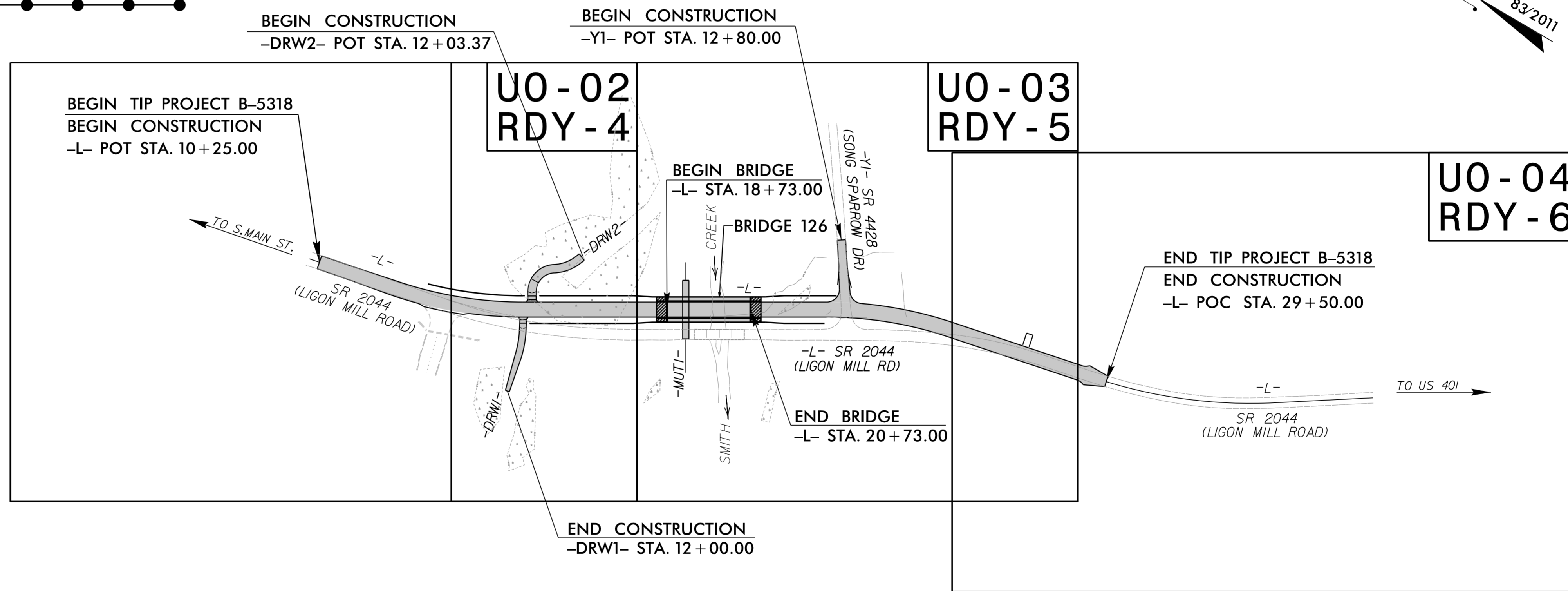
**LOCATION: REPLACE BRIDGE #126 OVER SMITH CREEK
ON SR 2044 (LIGON MILL ROAD)**

TYPE OF WORK: UTILITY RELOCATION

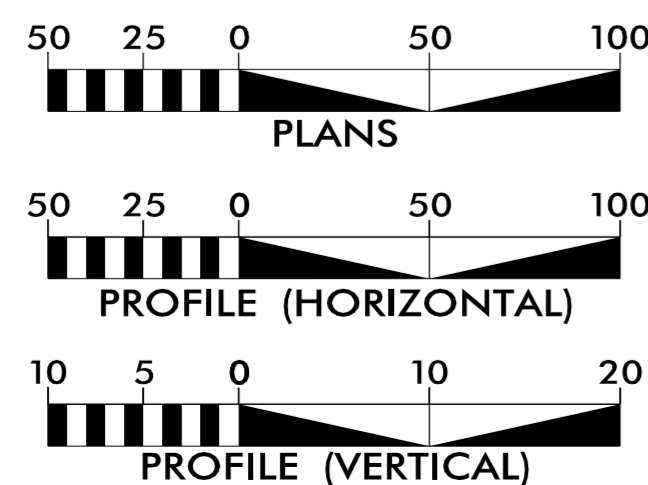
T.I.P. NO.	SHEET NO.
B-5318	UO-01

NOTE:
ALL UTILITY WORK SHOWN ON THIS SHEET WILL BE DONE BY OTHERS. NO PAYMENT WILL BE MADE TO THE CONTRACTOR FOR UTILITY WORK SHOWN ON THIS SHEET.

OFF SITE DETOUR ●●●●●



GRAPHIC SCALES



INDEX OF SHEETS

SHEET NO.:	DESCRIPTION:
UO-01	TITLE SHEET
UO-02 THRU UO-04	UBO PLAN SHEETS

UTILITY OWNERS WITH CONFLICTS

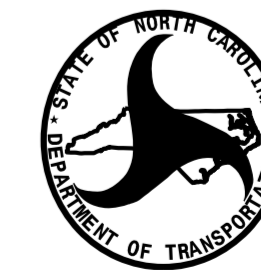
- (A) POWER - DUKE ENERGY
- (B) POWER - WAKE EMC
- (C) TELEPHONE - CENTURYLINK/LUMEN
- (D) CATV - SPECTRUM/CHARTER
- (E) COMMUNICATIONS - TING
- (F) GAS - DOMINION ENERGY

PREPARED IN THE OFFICE OF:



3220 GLEN ROYAL RD. RALEIGH, NC 27617
TELE 919.788.0224 FAX 919.788.0232
NC LICENSE #P-0189

UTILITIES PROJECT ENGINEER
Mary Jo Lee, P.E.



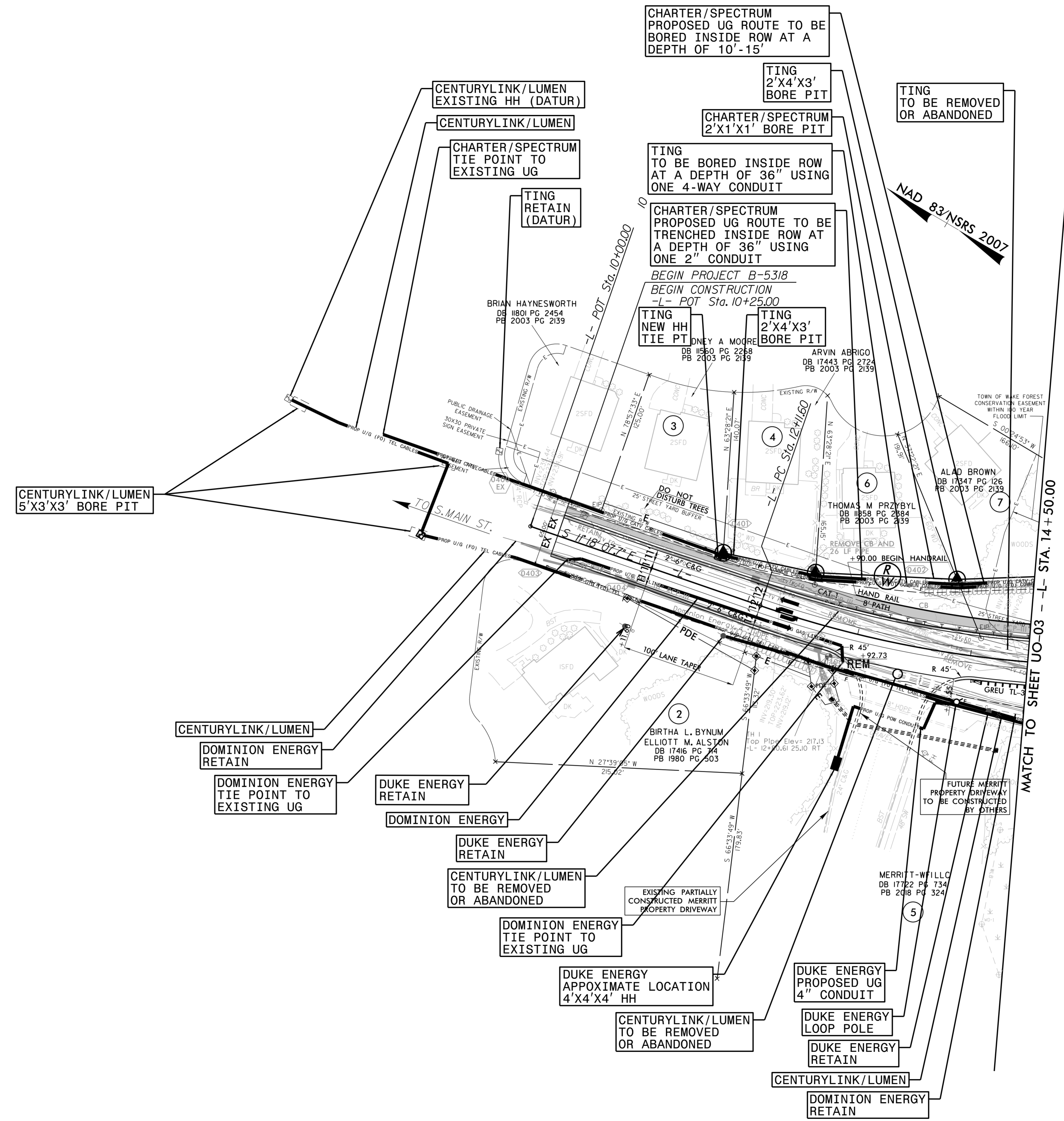
**DIVISION OF HIGHWAYS
DIVISION 5**

PROJECT DELIVERY UNIT
2612 N. DUKE STREET
DURHAM, 27704

BEN UPSHAW, PE TEAM LEAD
LISA B. GILCHRIST BRIDGE PROGRAM MANAGER
DON PROPER DIV 5 UTILITIES ENGINEER
MONROE BROWN DIV 5 UTILITY COORDINATOR

UTILITIES BY OTHERS

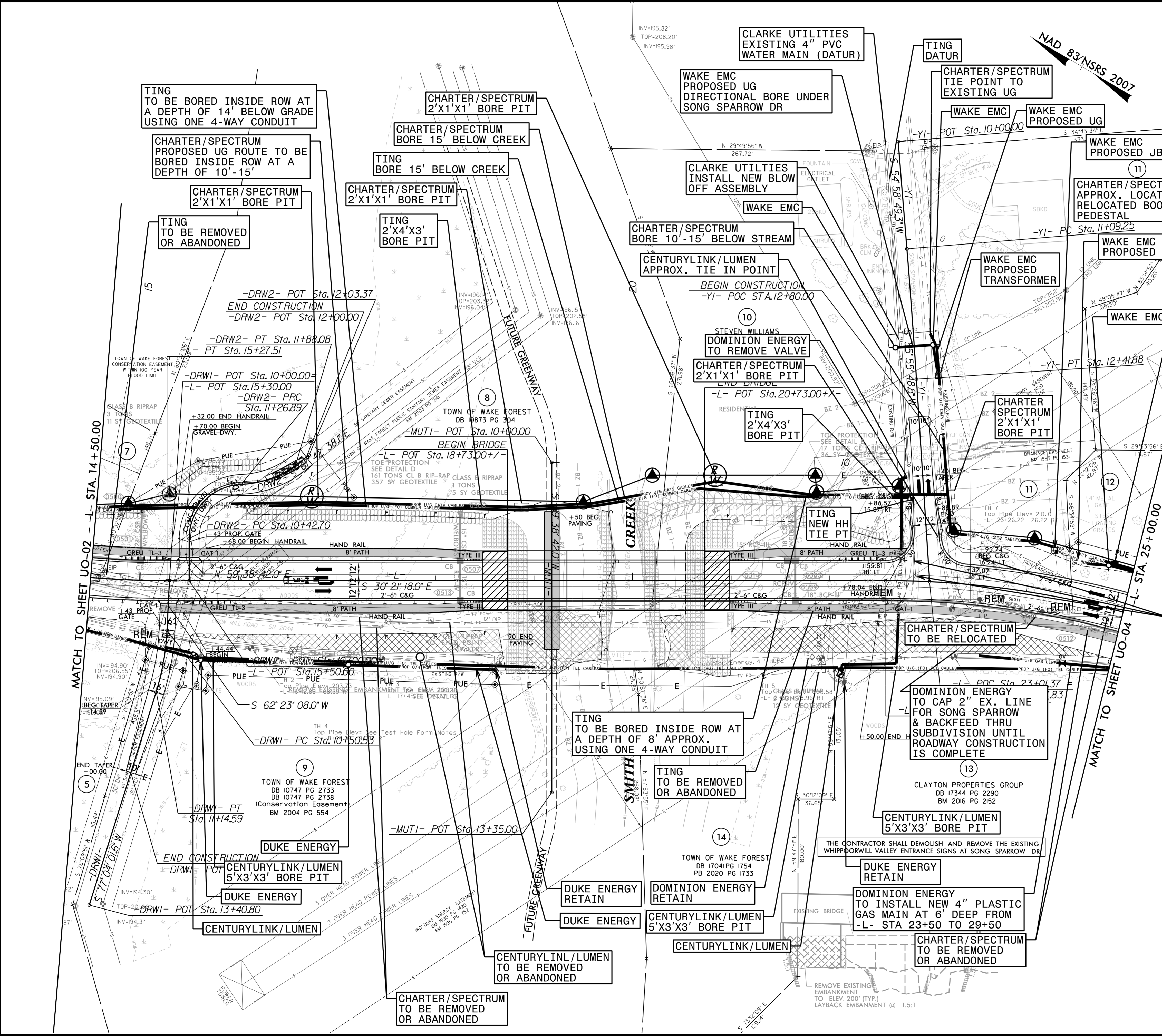
ALL PROPOSED UTILITY WORK SHOWN ON THIS SHEET WILL BE DONE BY OTHERS. NO PAYMENT WILL BE MADE TO THE CONTRACTOR FOR PROPOSED UTILITY WORK SHOWN ON THIS SHEET.



11/03/21
 8/4/2022
 P:\Engineering\UBD\Proj\B5318.ut.-rdy4_U002.psh.dgn

UTILITIES BY OTHERS

ALL PROPOSED UTILITY WORK SHOWN ON THIS SHEET WILL BE DONE BY OTHERS. NO PAYMENT WILL BE MADE TO THE CONTRACTOR FOR PROPOSED UTILITY WORK SHOWN ON THIS SHEET.



TING TO BE BORED INSIDE ROW AT A DEPTH OF 14' BELOW GRADE USING ONE 4-WAY CONDUIT

CHARTER/SPECTRUM PROPOSED UG ROUTE TO BE BORED INSIDE ROW AT A DEPTH OF 10'-15'

CHARTER/SPECTRUM 2'X1'X1' BORE PIT

TING TO BE REMOVED OR ABANDONED

CHARTER/SPECTRUM 2'X1'X1' BORE PIT

CHARTER/SPECTRUM BORE 15' BELOW CREEK

TING BORE 15' BELOW CREEK

CHARTER/SPECTRUM 2'X1'X1' BORE PIT

TING 2'X4'X3' BORE PIT

CLARKE UTILITIES EXISTING 4" PVC WATER MAIN (DATUR)

WAKE EMC PROPOSED UG DIRECTIONAL BORE UNDER SONG SPARROW DR

CLARKE UTILITIES INSTALL NEW BLOW OFF ASSEMBLY

CHARTER/SPECTRUM BORE 10'-15' BELOW STREAM

CENTURYLINK/LUMEN APPROX. TIE IN POINT

BEGIN CONSTRUCTION -YI- POC STA.12+80.00

STEVEN WILLIAMS DOMINION ENERGY TO REMOVE VALVE

CHARTER/SPECTRUM 2'X1'X1' BORE PIT

TING 2'X4'X3' BORE PIT

CHARTER/SPECTRUM TIE POINT TO EXISTING UG

WAKE EMC PROPOSED UG

WAKE EMC PROPOSED UG

WAKE EMC PROPOSED JB

CHARTER/SPECTRUM APPROX. LOCATION RELOCATED BOOSTER PEDESTAL

WAKE EMC PROPOSED UG

WAKE EMC PROPOSED TRANSFORMER

WAKE EMC

CHARTER SPECTRUM 2'X1'X1' BORE PIT

TING NEW HHTIE PT

CHARTER/SPECTRUM TO BE RELOCATED

CLARKE UTILITIES TO BE REMOVED OR ABANDONED

TING TO BE BORED INSIDE ROW AT A DEPTH OF 8' APPROX. USING ONE 4-WAY CONDUIT

TING TO BE REMOVED OR ABANDONED

DOMINION ENERGY TO CAP 2" EX. LINE FOR SONG SPARROW & BACKFEED THRU SUBDIVISION UNTIL ROADWAY CONSTRUCTION IS COMPLETE

CENTURYLINK/LUMEN 5'X3'X3' BORE PIT

DUKE ENERGY RETAIN

DOMINION ENERGY TO INSTALL NEW 4" PLASTIC GAS MAIN AT 6' DEEP FROM -L- STA 23+50 TO 29+50

CHARTER/SPECTRUM TO BE REMOVED OR ABANDONED

TOWN OF WAKE FOREST DB 10747 PG 2733 DB 10747 PG 2738 (Conservation Easement) BM 2004 PG 554

DUKE ENERGY

DUKE ENERGY

CENTURYLINK/LUMEN

DUKE ENERGY RETAIN

DOMINION ENERGY RETAIN

DUKE ENERGY

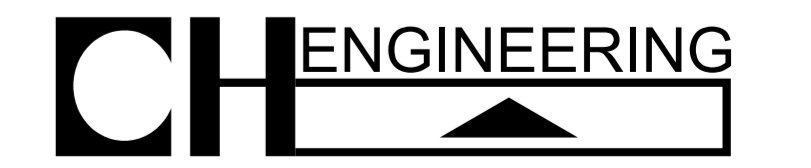
CENTURYLINK/LUMEN 5'X3'X3' BORE PIT

CENTURYLINK/LUMEN

CENTURYLINK/LUMEN TO BE REMOVED OR ABANDONED

CHARTER/SPECTRUM TO BE REMOVED OR ABANDONED

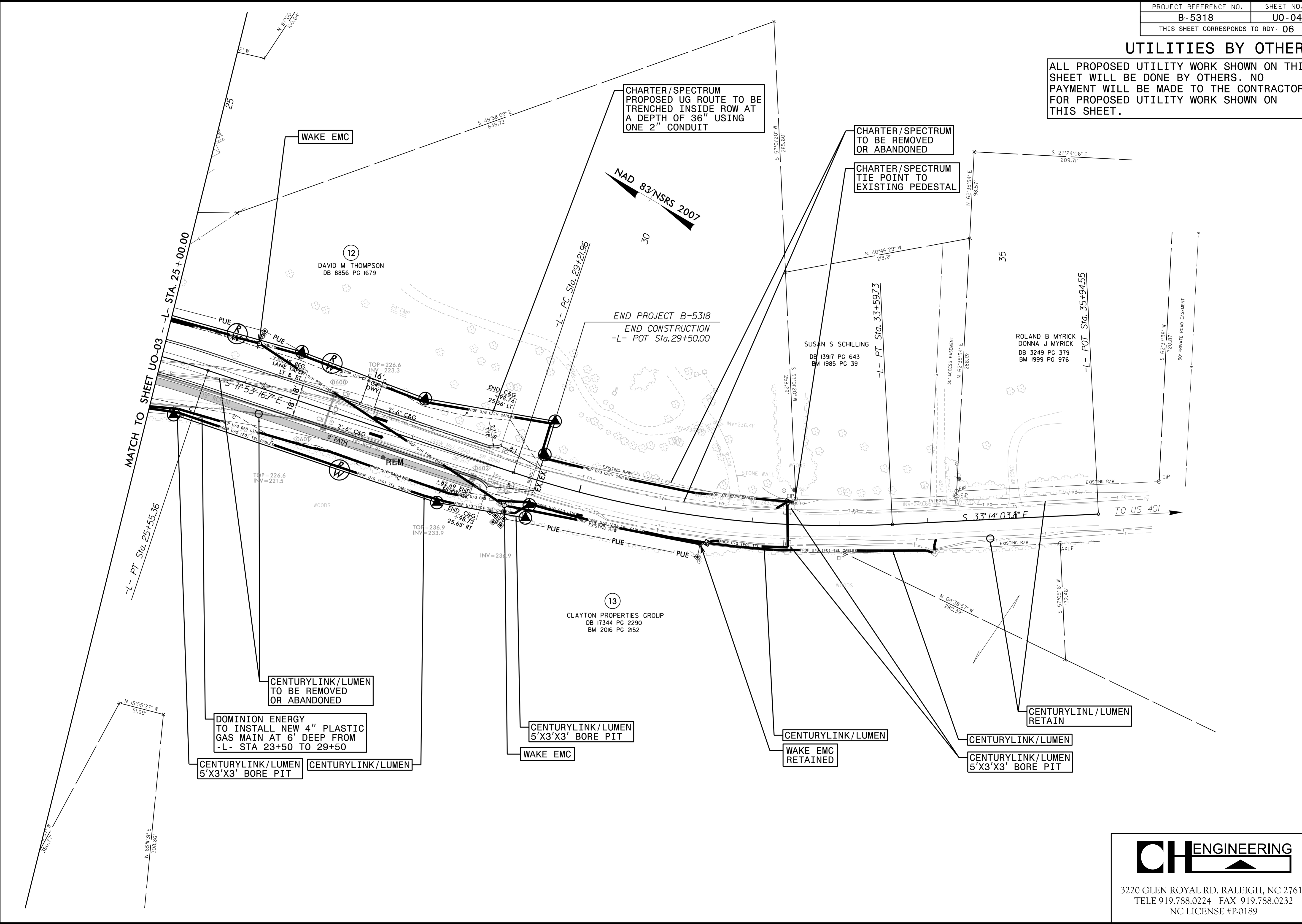
8/4/2022 Engineering\UBO\Projects\B5318\ut_rdy5_U003_psh.dgn



3220 GLEN ROYAL RD. RALEIGH, NC 27617
 TELE 919.788.0224 FAX 919.788.0232
 NC LICENSE #P0189

UTILITIES BY OTHERS

ALL PROPOSED UTILITY WORK SHOWN ON THIS SHEET WILL BE DONE BY OTHERS. NO PAYMENT WILL BE MADE TO THE CONTRACTOR FOR PROPOSED UTILITY WORK SHOWN ON THIS SHEET.



CHARTER/SPECTRUM PROPOSED UG ROUTE TO BE TRENCHED INSIDE ROW AT A DEPTH OF 36" USING ONE 2" CONDUIT

CHARTER/SPECTRUM TO BE REMOVED OR ABANDONED

CHARTER/SPECTRUM TIE POINT TO EXISTING PEDESTAL

WAKE EMC

CENTURYLINK/LUMEN TO BE REMOVED OR ABANDONED

DOMINION ENERGY TO INSTALL NEW 4" PLASTIC GAS MAIN AT 6' DEEP FROM -L- STA 23+50 TO 29+50

CENTURYLINK/LUMEN 5'X3'X3' BORE PIT

CENTURYLINK/LUMEN

CENTURYLINK/LUMEN 5'X3'X3' BORE PIT

WAKE EMC

CENTURYLINK/LUMEN

WAKE EMC RETAINED

CENTURYLINK/LUMEN

CENTURYLINK/LUMEN 5'X3'X3' BORE PIT

CENTURYLINK/LUMEN RETAIN

CLAYTON PROPERTIES GROUP
DB 17344 PG 2290
BM 2016 PG 2152

DAVID M THOMPSON
DB 8856 PG 1679

SUSAN S SCHILLING
DE 13917 PG 643
BM 1985 PG 39

ROLAND B MYRICK
DONNA J MYRICK
DB 3249 PG 379
BM 1999 PG 976

END PROJECT B-5318
END CONSTRUCTION
-L- POT Sta. 29+50.00

MATCH TO SHEET UO-03 -- L- STA. 25+00.00

-L- PT Sta. 25+55.36

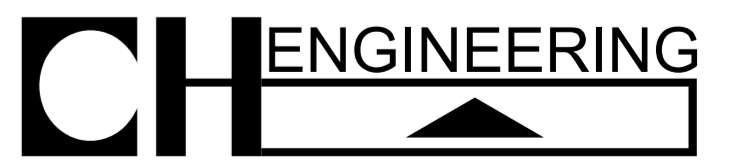
-L- PC Sta. 29+21.96

-L- PT Sta. 33+59.73

-L- POT Sta. 35+94.55

TO US 401

8/4/2022 P:\Engineering\UBD\Projects\B5318\ubd\rdy6_U004_psh.dgn



3220 GLEN ROYAL RD. RALEIGH, NC 27617
TELE 919.788.0224 FAX 919.788.0232
NC LICENSE #P-0189