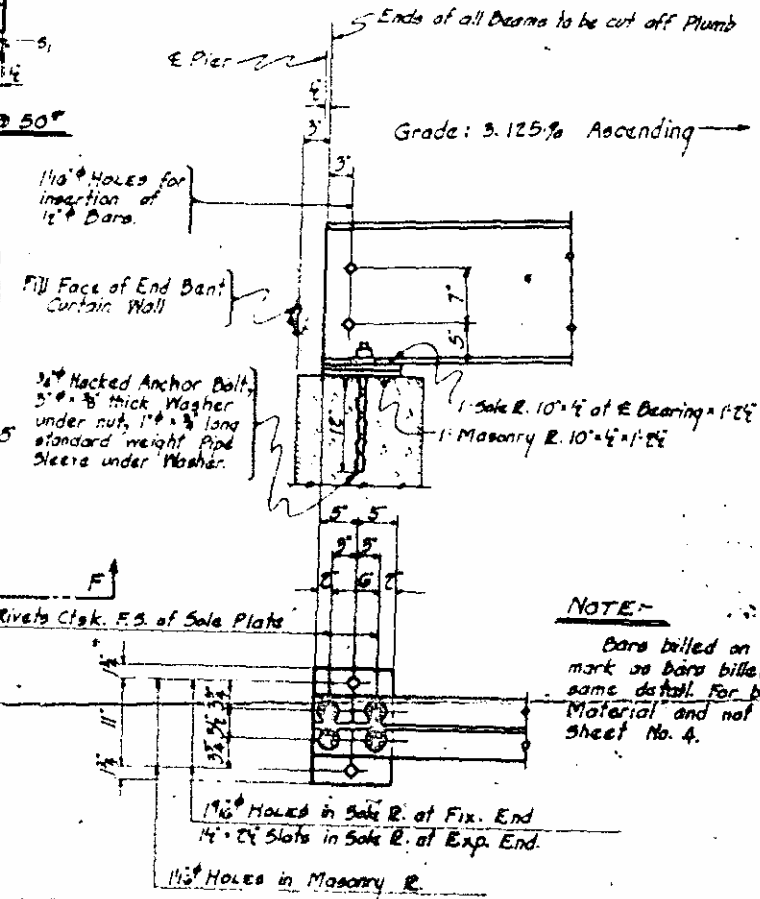
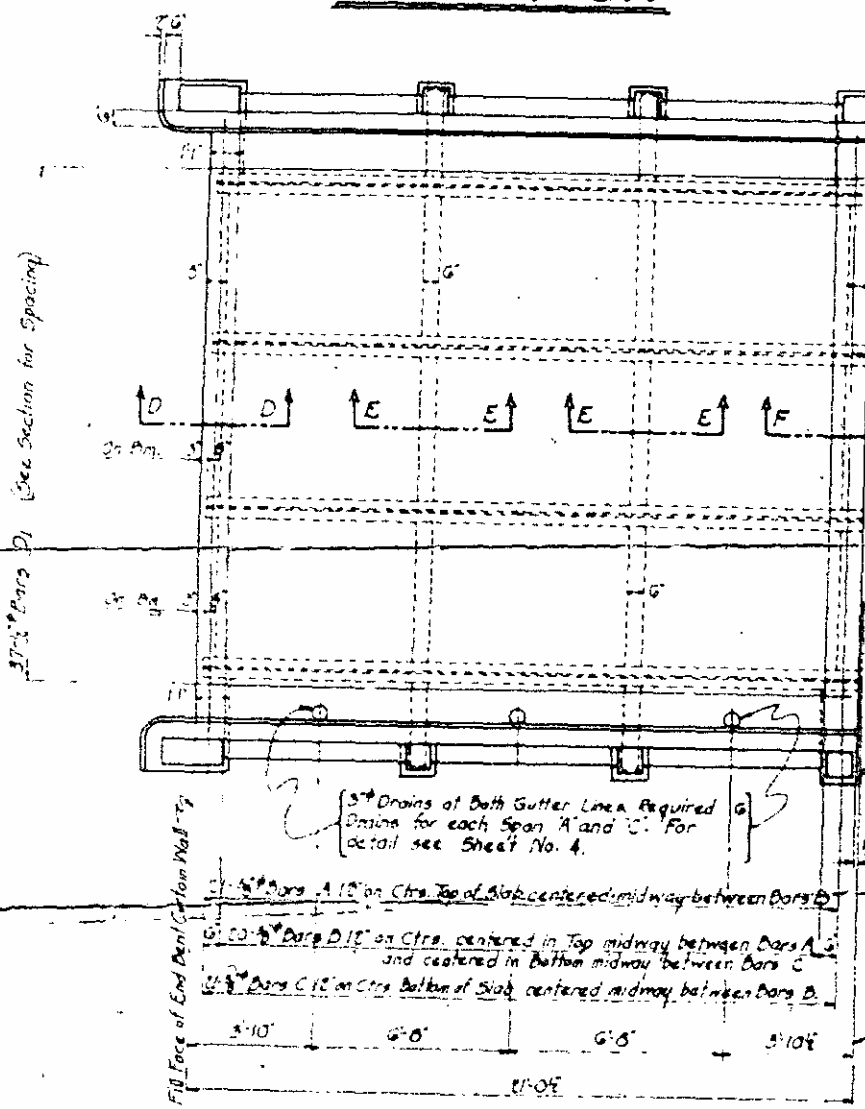
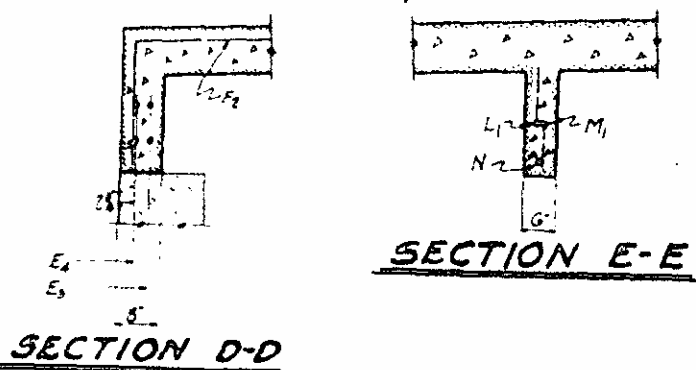
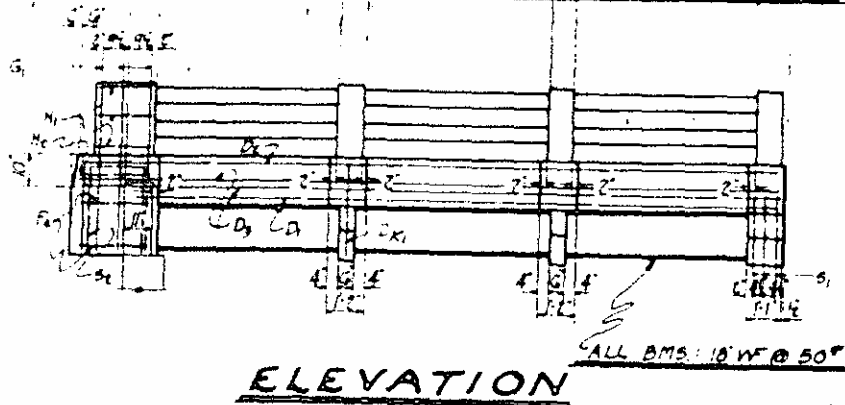


**NOTE:**  
In addition to the expansion joint material, 2 ply roofing felt shall be placed over all joints in the expansion material at all vertical expansion joints below top of curb. This felt shall be placed on the side of joint adjacent to the pouring

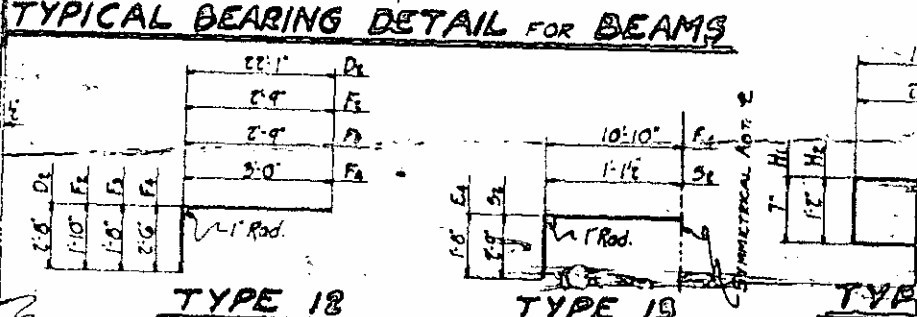
**NOTE:**  
Hand rails for Spans A and C shall have the over-all precast length of 6'7". Rail and rail post details not shown on this Drawing are same as those on Sheet No. 4.

**DEAD LOAD DEFLECTION: 1/4" (All Beams) (No Mill Camber required)**

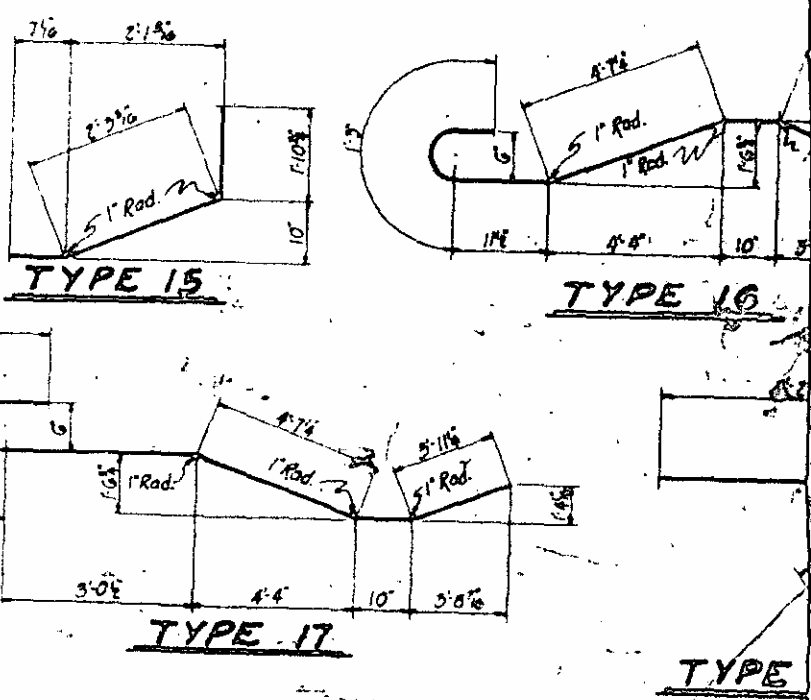
**NOTE:**  
For location of Fix and Exp ends of spans see General Drawing.



**NOTE:**  
Bars billed on this drawing mark as bars billed on Sheet same detail. For bar Types on Material and not detailed on Sheet No. 4.



**PLAN**



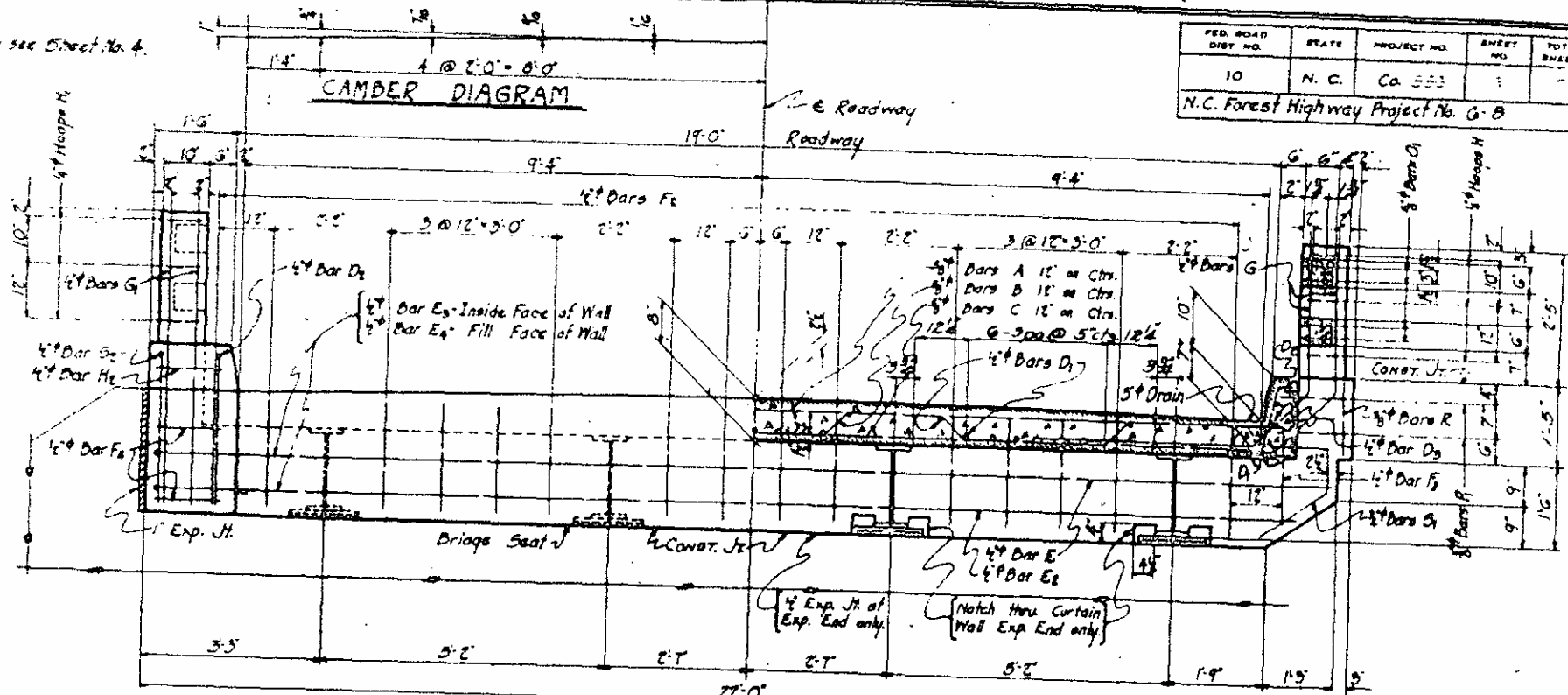
**NOTE:**  
Details shown on this drawing have been made for Span A. Details for Span C are the same except for reversed grade.

FED. ROAD DIST. NO.	STATE	PROJECT NO.	SHEET NO.	TOTAL SHEETS
10	N. C.	Co. 553	1	1

N.C. Forest Highway Project No. G-B

see Flashing see Street No. 4.

**CAMBER DIAGRAM**



**HALF END VIEW**

**HALF SECTION AT PIER**

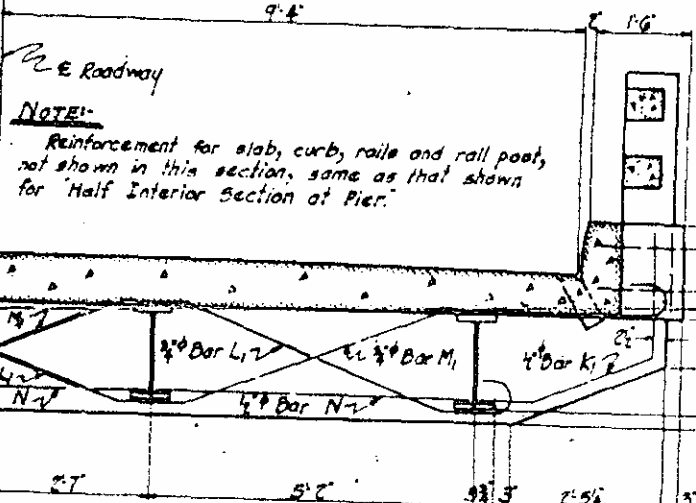
**BILL OF MATERIAL**

No. of Bars in Span:-		Total No. of Bars	Size	Type	Length	Weight of Bars in Span:-		Total Weight of Bars
'A'	'C'					'A'	'C'	
21	21	42	4#	1	21'-3"	435	435	870
20	20	40	4#	2	20'-7"	461	461	922
21	21	42	4#	3	21'-7"	475	475	950
39	39	78	4#	Str.	20'-9"	541	541	1082
2	2	4	4#	12	24'-9"	33	33	66
4	4	8	4#	Str.	22'-0"	59	59	118
1	1	2	4#	Str.	22'-0"	14	14	28
2	2	4	4#	Str.	21'-9"	13	13	26
2	2	4	4#	13	25'-0"	33	33	66
30	30	60	4#	12	4'-7"	42	42	84
2	2	4	4#	12	4'-9"	6	6	12
24	24	48	4#	3	4'-9"	76	76	152
12	12	24	4#	Str.	5'-3"	42	42	84
6	6	12	4#	6	2'-0"	8	8	16
4	4	8	4#	14	5'-0"	20	20	40
4	4	8	4#	15	4'-9"	15	15	30
4	4	8	4#	16	11'-7"	70	70	140
4	4	8	4#	17	13'-8"	82	82	164
6	6	12	4#	Str.	5'-0"	20	20	40
18	18	36	4#	Str.	6'-4"	316	316	632
8	8	16	4#	10	5'-11"	12	12	24
4	4	8	4#	10	3'-10"	6	6	12
2	2	4	4#	Str.	1'-5"	6	6	12
6	6	12	4#	18	8'-0"	77	77	154
2	2	4	4#	15	7'-9"	10	10	20
4	4	8	4#	12	5'-6"	15	15	30
2	2	4	4#	14	7'-6"	10	10	20
2	2	4	4#	6	1'-6"	18	18	36

SPAN	'A'	'C'	TOTAL
STEEL, Lbs.	3020	3020	6040
STEEL, Lbs. (Approximate)	4580	4580	9160
CONCRETE, Cu. Yds.	16.2	16.2	32.4

Steel bars which shall be paid for as Reinforcing Steel. (960 lbs. thus included for and "C")  
 Lbs. of Galvanized Pipe Drains which shall be paid for as Structural Steel.

VISION OF CLASS 'A' CONCRETE TWO SPANS ('A' AND 'C')	
Maximum Size of Coarse Aggregate	Cu. Yds.
1 1/2"	89.8
1"	8.6
CLASS 'A' CONCRETE, Cu. Yds.	98.4



**HALF INTERIOR SECTION**

NOTE:-  
 For General Note and Design Data, see General Drawings.

PROJECT NO. Co. 553  
 MACON COUNTY  
 STA.: 271+80.5

**SPANS: 'A' AND 'C'**

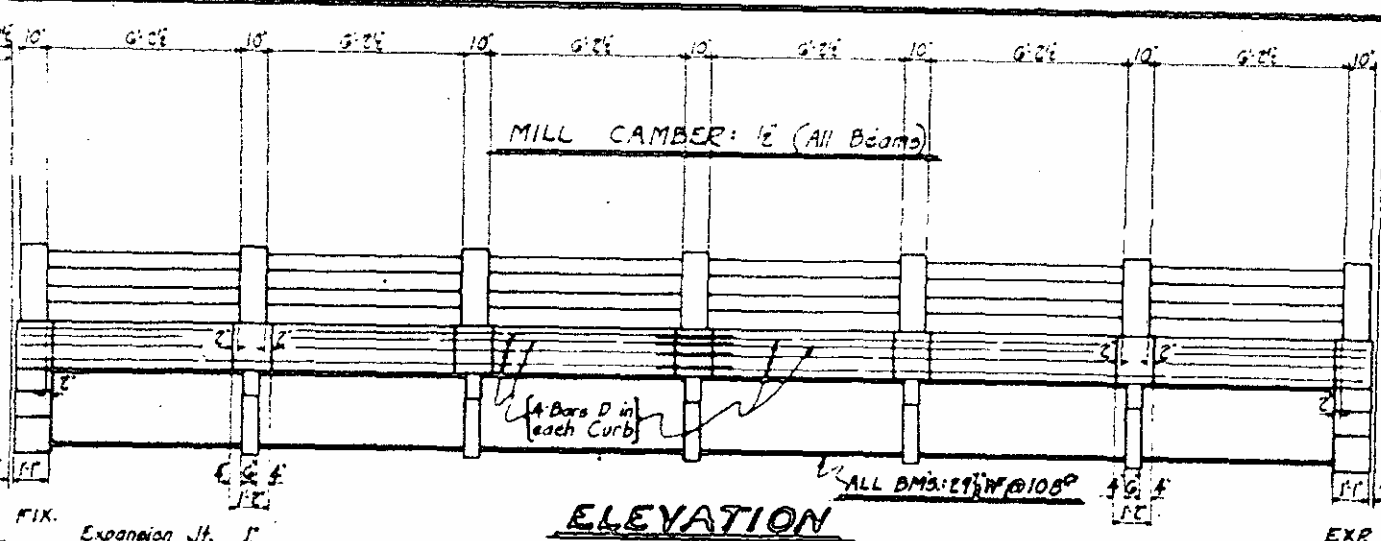
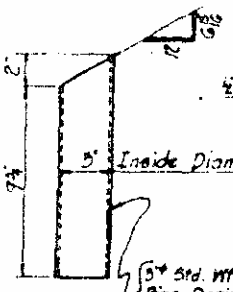
STATE OF NORTH CAROLINA  
 STATE HIGHWAY AND PUBLIC WORKS COMMISSION  
 SUPERSTRUCTURE DETAILS  
 MIDDLE CREEK BRIDGE  
 DILLARD-HIGHLANDS  
 NATIONAL FOREST ROAD  
 NOVEMBER 1937

SUBMITTED BY *W. L. ...* BRIDGE ENGINEER  
 APPROVED BY *W. James Davis*  
 PLAN NO.

**NOTE:**

In addition to the expansion joint material, 2 ply roofing felt shall be placed over all joints in the expansion material at all vertical expansion joints below top of curbs. This felt shall be placed on the side of joint adjacent to the pouring.

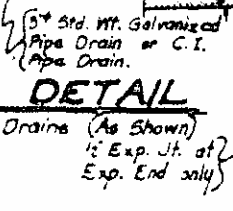
MILL CAMBER: 1/2" (All Beams)



**ELEVATION**

**DRAIN DETAIL**

REQUIRED: 12 Drains (As Shown)  
1/2" Exp. Jt. at Exp. End only

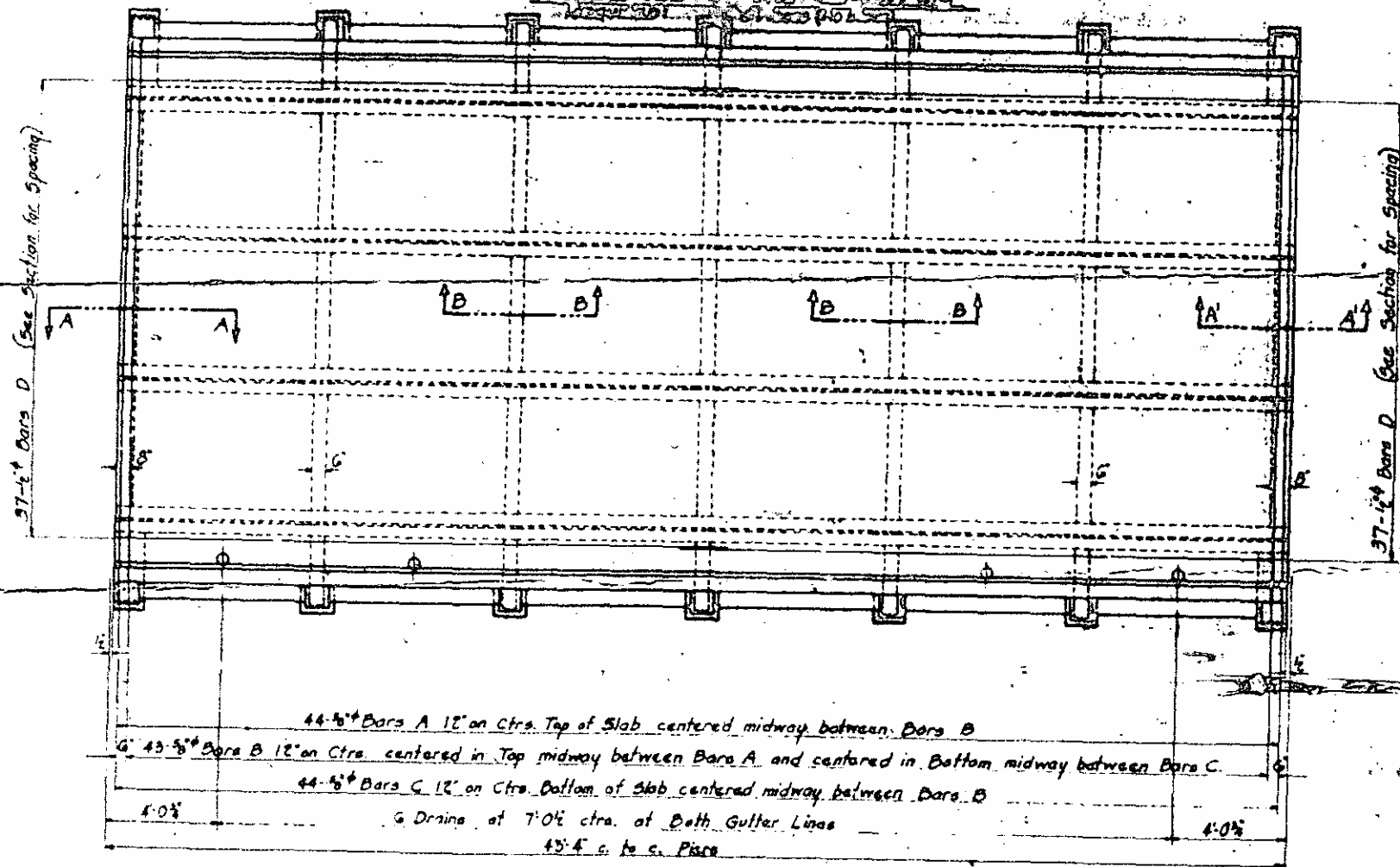
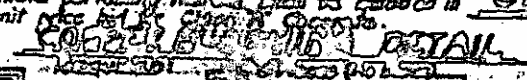


**SECTION A-A**  
(SECTION A-A SIMILAR)

**NOTE:**

Copper flashing shall be of the best grade 20 or 18 oz. Copper 1/8" wide, and shall be drawn bent and punched as shown. No allowance will be made for flashing; the cost of same, including a 10% allowance for labor and incidental pertaining thereto, shall be included in the unit price for the curbs.

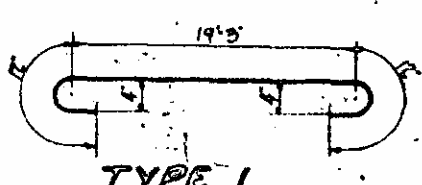
**SECTION B-B**



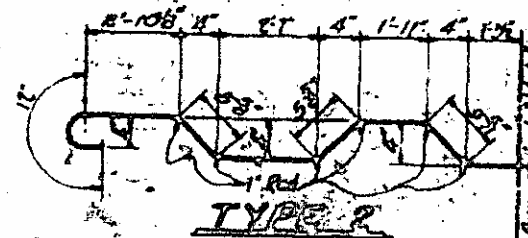
**PLAN SPAN B**

44-#6 Bars A 12" on Ctrs. Top of Slab centered midway between Bars B  
 44-#6 Bars B 12" on Ctrs. centered in Top midway between Bars A and centered in Bottom midway between Bars C  
 44-#6 Bars C 12" on Ctrs. Bottom of Slab centered midway between Bars B  
 4-0% Drains at 7'-0" ctra. at Both Gutter Lines  
 45'-4" c. to c. Piers

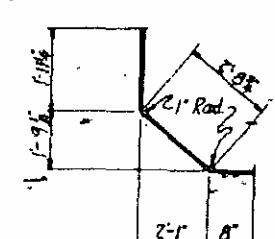
**SPAN "B"**



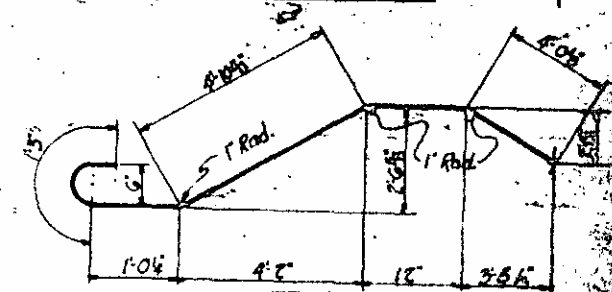
**TYPE 1**



**TYPE 2**



**TYPE 7**



**TYPE 8**

SPECIAL	DESIGNED BY U.S. Forest Service	DATE
	DRAWN BY G. Williams	DATE Nov. 1937
	TRACED BY da	DATE
	CHECKED BY H.W. Sheldon	DATE

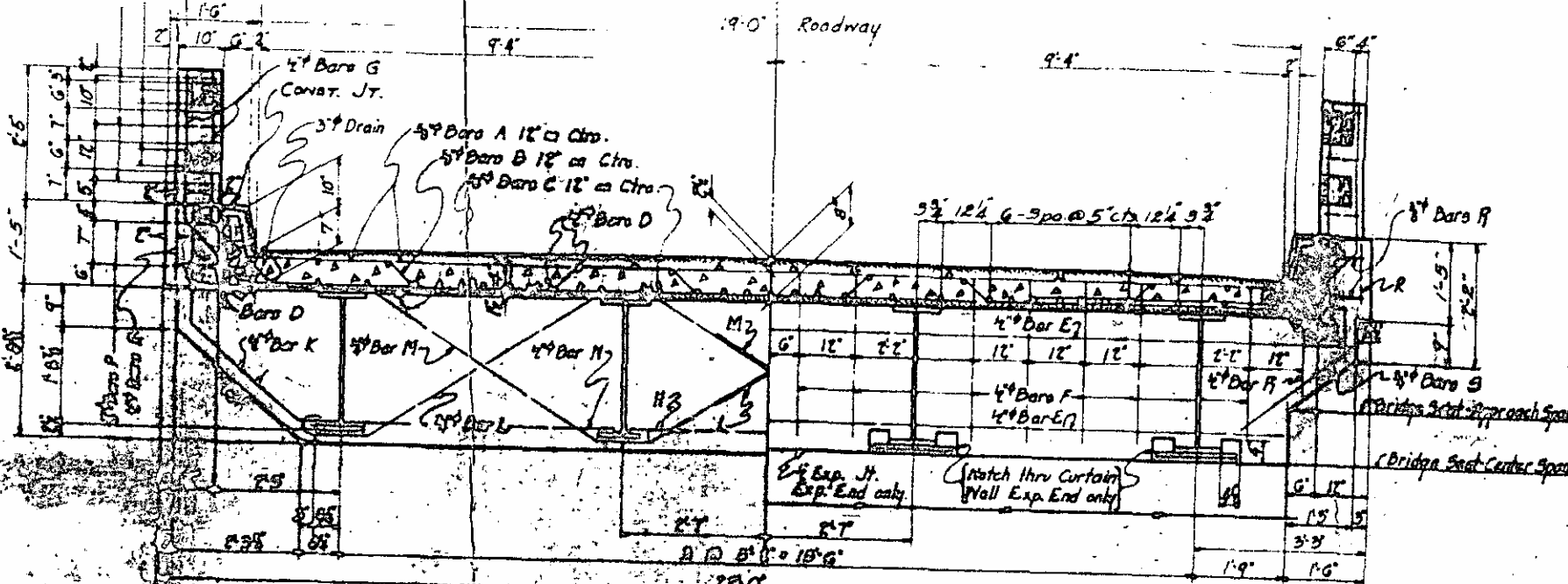
Revised for railing and...

FED. ROAD DIST. NO.	STATE	PROJECT NO.	SHEET NO.	TOTAL SHEETS
10	N. C.	CA 555	4	7

N.C. Forest Highway Project No. G-B

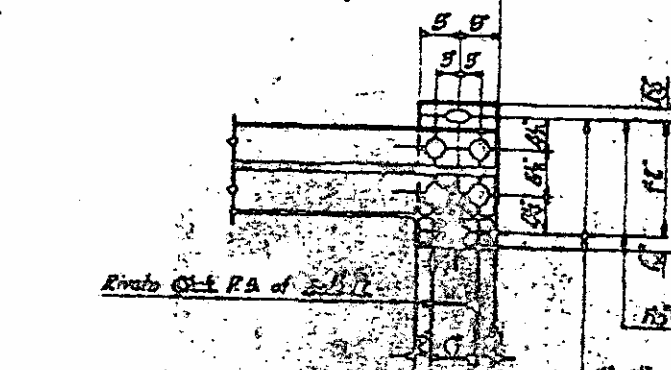
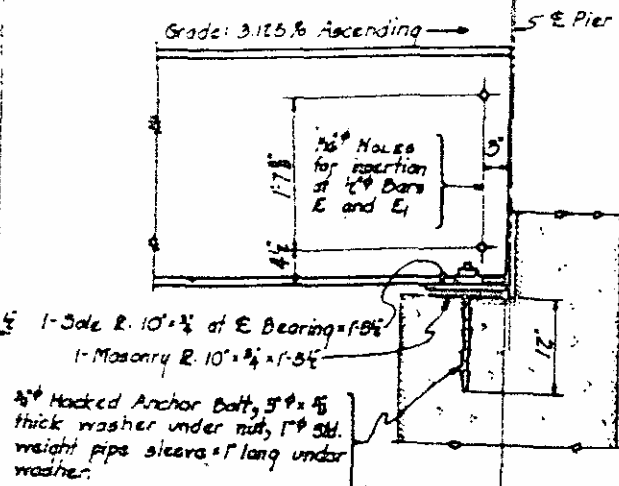
Ends of all Beams to be cut off Plumb

**CAMBER DIAGRAM**



**HALF INTERIOR SECTION**

**HALF SECTION AT PIER**



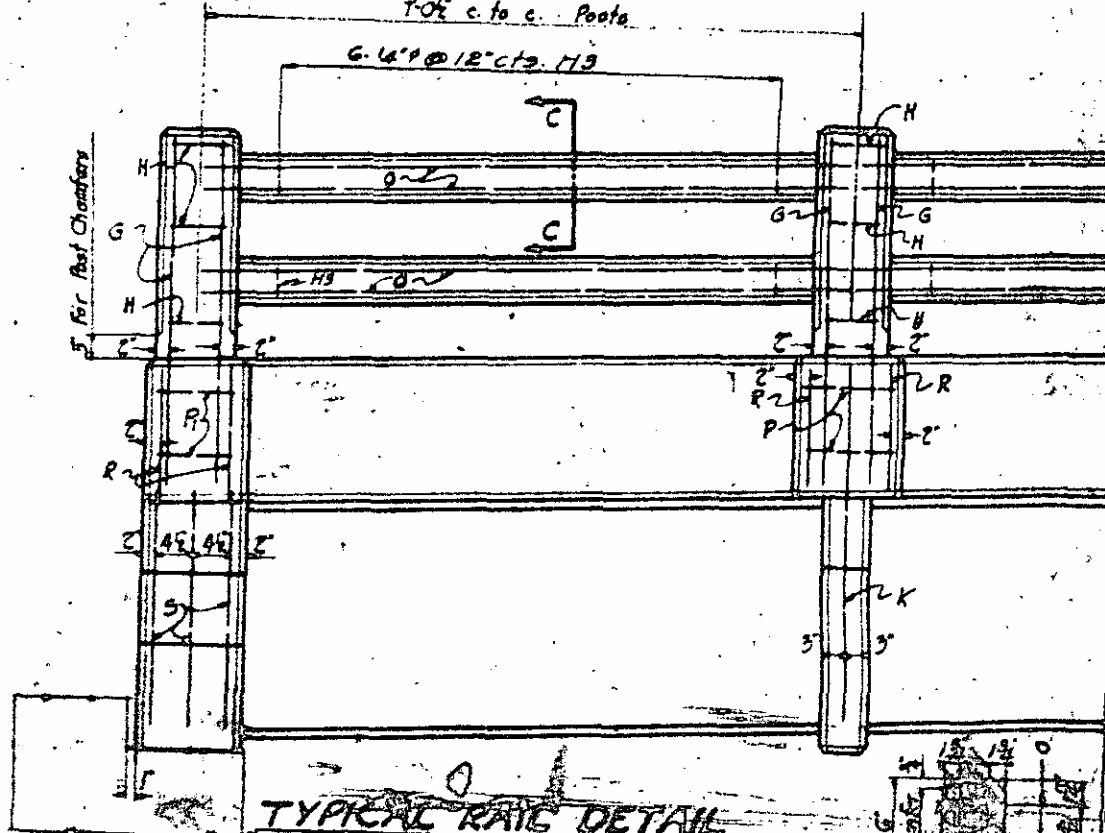
**TYPICAL BEAM DETAIL FOR BEAMS**

DIVISION OF SLAB AT CONCRETE	
Maximum Area of Class II Concrete	Cu Yds.
11	30.5
12	2.3
<b>TOTAL CLASS II CONCRETE</b>	<b>32.8</b>

**BILL OF MATERIAL FOR SPAN 'B'**

Bar	No.	Size	Type	Length	Weight
A	44	3/8"	1	6'-3"	975
B	43	1/2"	2	22'-7"	250
C	44	1/2"	3	21'-7"	240
D	40	3/4"	Straight	22'-6"	13.99
E	2	1/2"		21'-2"	10
F	2	1/2"		18'-6"	25
G	4	1/2"	4	5'-6"	185
H	57	1/2"	5	4'-8"	12
I	48	1/2"	6	2'-9"	178
J	10	1/2"	7	2'-6"	18
K	10	1/2"	8	5'-8"	37
L	10	1/2"	9	18'-2"	105
M	10	1/2"	10	15'-9"	214
N	15	1/2"	Straight	5'-0"	20
O	48	1/2"	11	6'-4"	676
P	20	1/2"	12	5'-11"	29
Q	8	1/2"	13	3'-10"	12
R	18	1/2"	Straight	1'-3"	13
S	12	1/2"	14	4'-8"	167
HA	180	1/2"	6	15'-9"	338

REINFORCING STEEL, Lbs	6057
STRUCTURAL STEEL, Lbs (Approximate)	30,943.0

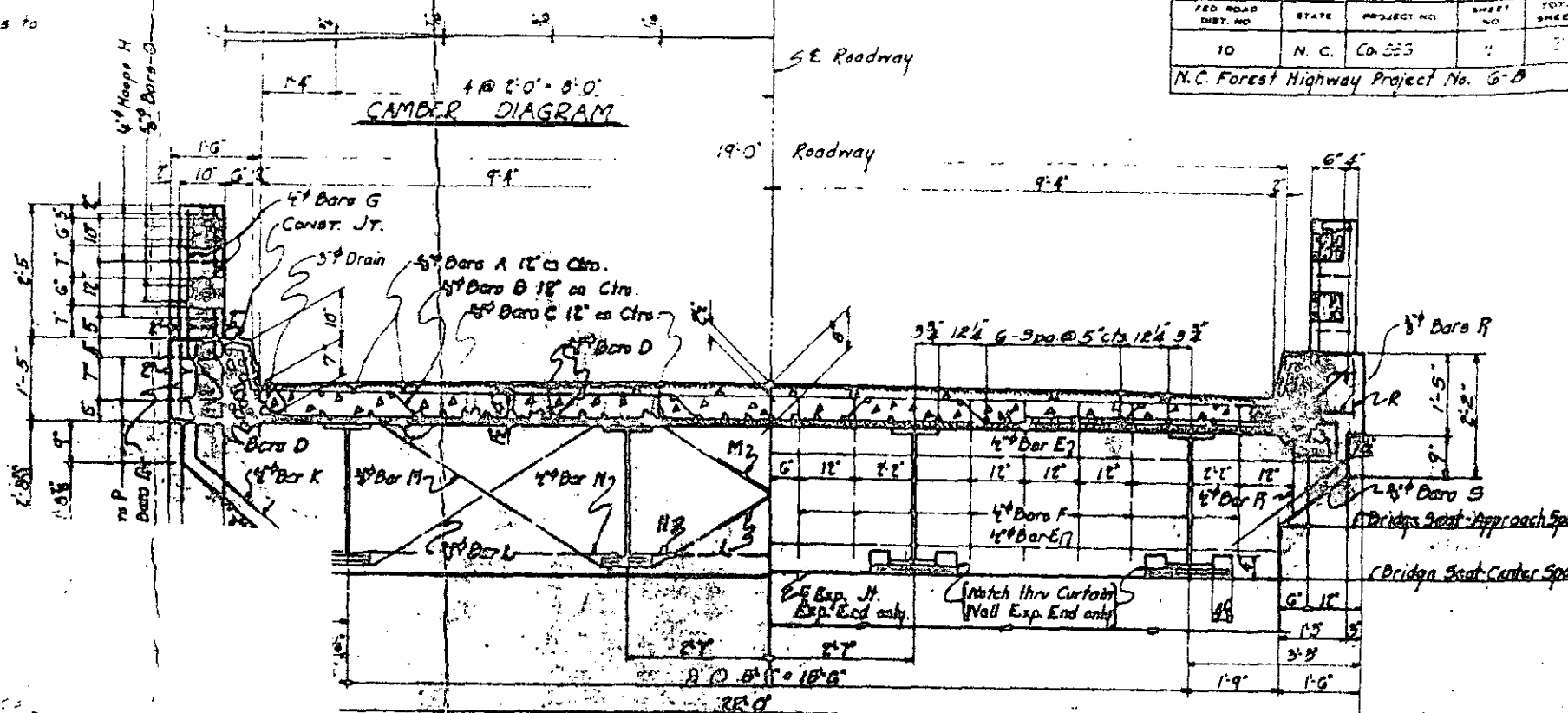
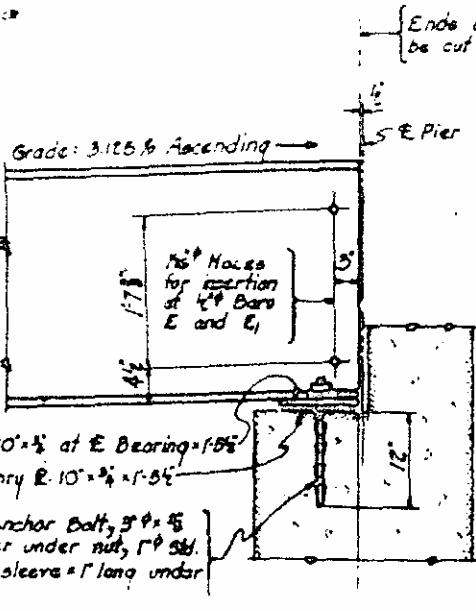


**TYPICAL RAFT DETAIL**

NOTE: See General Notes and Design Data in General Drawing.

**SPAN "B"**

PROJECT NO. CA 555



INTERIOR SECTION

HOLE SECTION AT PIER

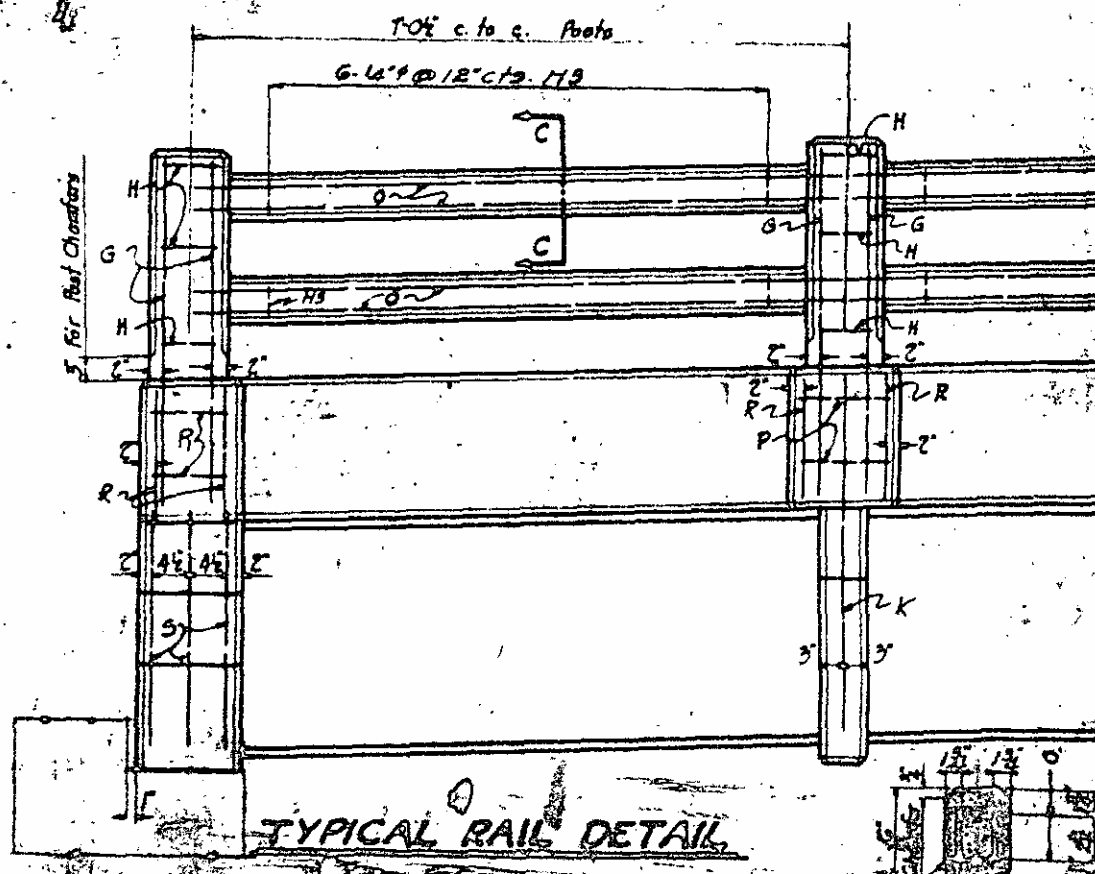
FOR SPAN 'B'

Length	Weight
21'-9"	975
22'-7"	950
21'-7"	930
22'-6"	1953
21'-2"	88
18'-6"	25
5'-6"	105
8'-8"	12
2'-0"	178
2'-6"	18
5'-4"	57
18'-2"	183
18'-9"	212
5'-0"	20
6'-2"	676
9'-11"	29
5'-10"	12
1'-9"	19
9'-8"	167
15'-6"	26

6069

estimate) 19420

32.8

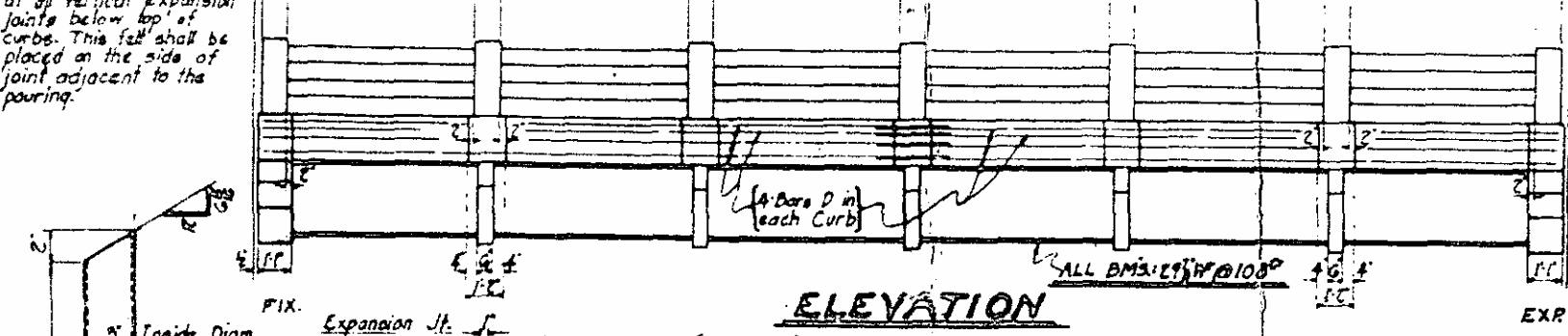


Refer to General Notes and Design Data see General Drawing.

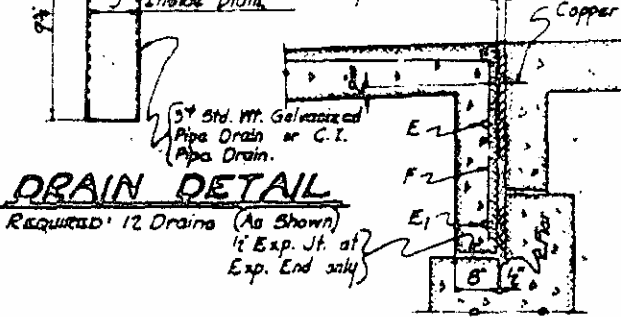
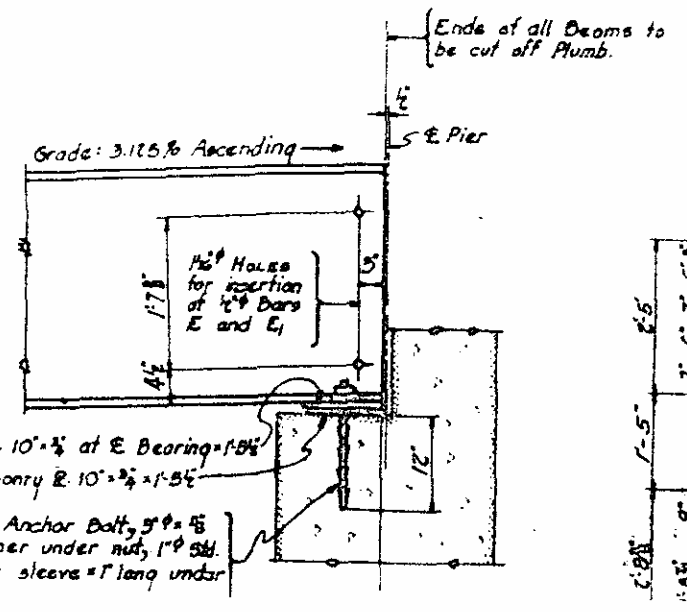
REVISED SPAN "B"

**NOTE:**  
 In addition to the expansion joint material, 2 ply roofing felt shall be placed over all joints in the expansion material at all vertical expansion joints below top of curbs. This felt shall be placed on the side of joint adjacent to the pouring.

MILL CAMBER: 1/2" (All Beams)

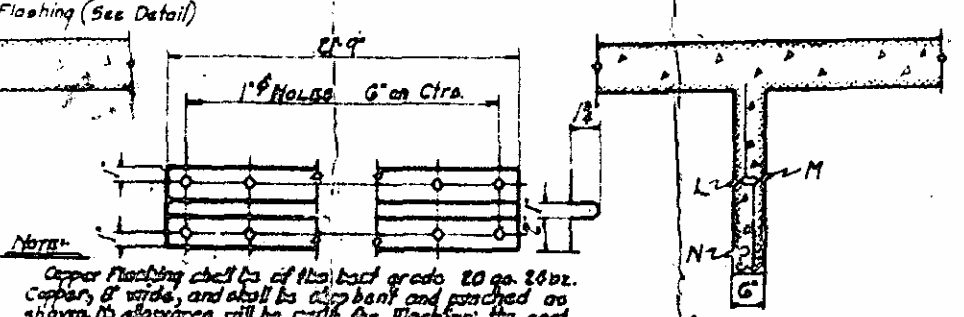


**ELEVATION**



**DRAIN DETAIL**

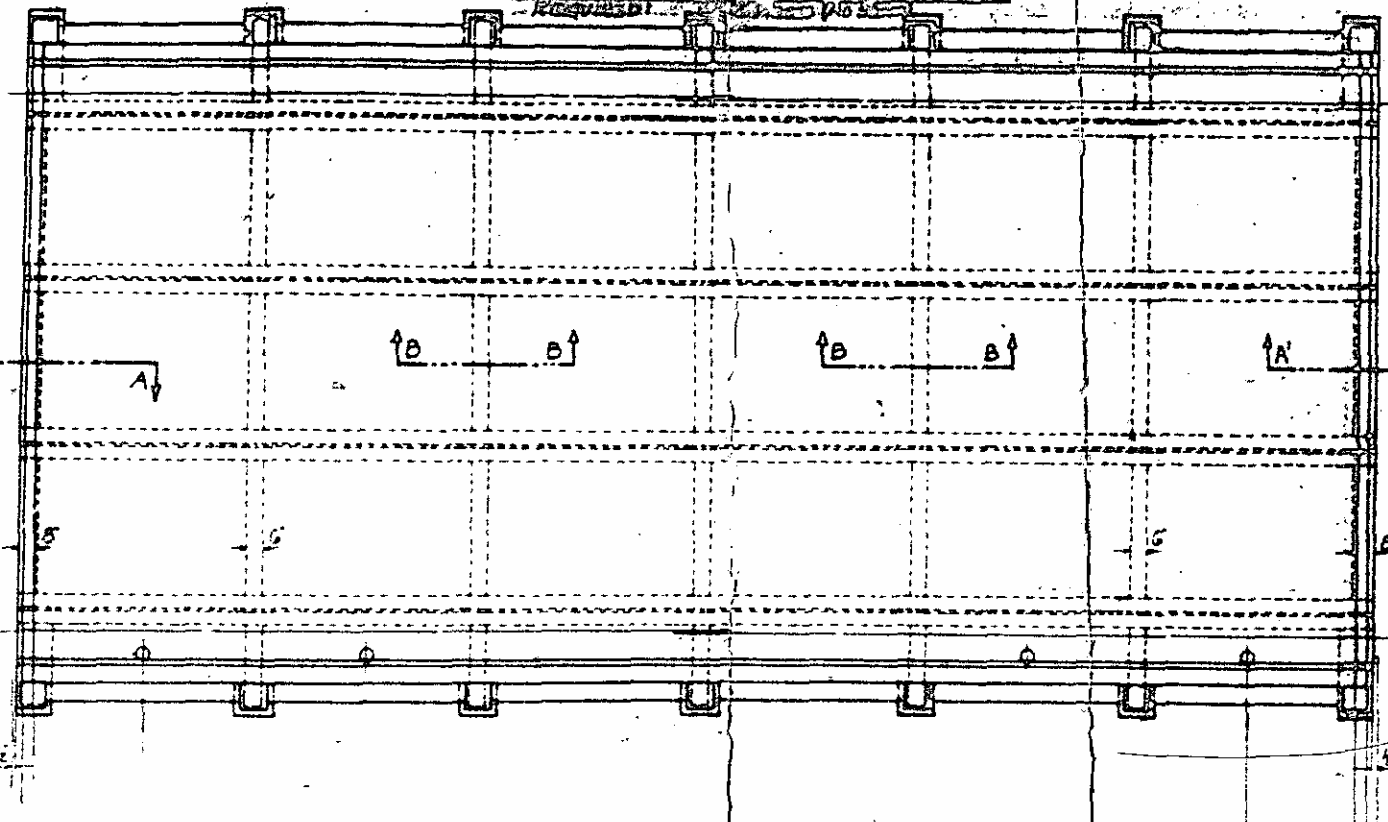
Required: 12 Drains (As Shown)  
 1' Exp. Jt. at Exp. End only



**SECTION A-A**  
 (SECTION A-A SIMILAR)

**SECTION B-B**

**Notes:**  
 Copper Flashing shall be of the best grade 20 or 26 oz. Copper, 8\"/>



44-#8 Bars A 12\"/>
 4-#3 Bars B 12\"/>
 44-#6 Bars C 12\"/>
 6 Drains at 7.05' stop at Both Gutter Lines

REVISED  
 REVISION "B"

