



STATE OF NORTH CAROLINA  
DEPARTMENT OF TRANSPORTATION

ROY COOPER  
GOVERNOR

J. ERIC BOYETTE  
SECRETARY

November 1, 2022

**Addendum No. 1**

RE: Contract # C204345

WBS # 40325.3.46

STATE FUNDED

**Cabarrus County (Y-4810K)**

GRADE SEPARATION AT SR-1625 (ROGERS LAKE RD) OVER NS/NCRR  
AND CLOSURE OF AT-GRADE CROSSING #724408Y IN KANNAPOLIS.

**November 15, 2022 Letting**

To Whom It May Concern:

Reference is made to the plans and proposal form furnished to you on this project.

The following revisions have been made to the Right of Way plans.

Sheet No.	Revision
RW02C-10	“150_009_y4810k_ls_rw02c-10” file name revised to “150_037_y4810k_ls_rw02c-10” to ensure sheets will be in the proper order.
RW02C-11	“150_012_y4810k_ls_rw02c-11” file name revised to “150_038_y4810k_ls_rw02c-11” to ensure sheets will be in the proper order.

The following revisions have been made to the Utility Construction plans.

Sheet No.	Revision
UC-4	Added one 8-inch Valve per NCDEQ comment on WL-2 STA 1+80.
UC-18	Added one 12-inch Valve per NCDEQ comment on WL-4 STA 5+40.
UC-21	Added valve per sheet UC-4.
UC-22	Added valve per sheet UC-18.
UC-23	Adjusted WL-4 profile at STA 11+60 to show proper clearance with existing gas per NCDEQ comment.

Mailing Address:  
NC DEPARTMENT OF TRANSPORTATION  
CONTRACT STANDARDS AND DEVELOPMENT  
1591 MAIL SERVICE CENTER  
RALEIGH, NC 27699-1591

Telephone: (919) 707-6900  
Fax: (919) 250-4127  
Customer Service: 1-877-368-4968

Location:  
1020 BIRCH RIDGE DR.  
RALEIGH, NC 27610

Website: [www.ncdot.gov](http://www.ncdot.gov)

Please void the above listed Sheets in your plans and staple the revised Sheets thereto.

The following revisions have been made to the proposal.

<b>Page No.</b>	<b>Revision</b>
Proposal Cover	Note added that reads "Includes Addendum No. 1 Dated 11-01-2022".

Please void the above listed existing Page in your proposal and staple the revised Page thereto.

On the item sheets the following pay item revisions have been made:

<u>Item</u>	<u>Description</u>	<u>Old Quantity</u>	<u>New Quantity</u>
0119-5546000000-E-1515	8" VALVE	5 EA	6 EA
0120-5558000000-E-1515	12" VALVE	4 EA	5 EA

The Contractor's bid must include these pay item revisions.

The electronic bidding file has been updated to reflect these revisions. Please download the Addendum File and follow the instructions for applying the addendum. Bid Express will not accept your bid unless the addendum has been applied.

The contract will be prepared accordingly.

Sincerely,

DocuSigned by:  
  
 F81B6038A47A442...

Ronald E. Davenport, Jr., PE  
 State Contract Officer

RED/cms  
 Attachments

cc: Mr. Brett D. Canipe, PE  
 Mr. Boyd Tharrington, PE  
 Mr. Jon Weathersbee, PE  
 Mr. Ken Kennedy, PE  
 Project File (2)

Mr. Forrest Dungan, PE  
 Ms. Jaci Kincaid  
 Ms. Penny Higgins  
 Ms. Lori Strickland  
 Mr. Mike Gwyn

STATE OF NORTH CAROLINA  
DEPARTMENT OF TRANSPORTATION  
RALEIGH, N.C.

PROPOSAL

**INCLUDES ADDENDUM No.1 DATED 11-01-2022**

DATE AND TIME OF BID OPENING: **Nov 15, 2022 AT 02:00 PM**

CONTRACT ID C204345  
WBS 40325.3.46

FEDERAL-AID NO. STATE FUNDED  
COUNTY CABARRUS  
T.I.P NO. Y-4810K  
MILES 0.730  
ROUTE NO. SR-1625  
LOCATION GRADE SEPARATION AT SR-1625 (ROGERS LAKE RD) OVER NS/NCRR  
AND CLOSURE OF AT-GRADE CROSSING #724408Y IN KANNAPOLIS.

TYPE OF WORK GRADING, DRAINAGE, PAVING, RETAINING WALL, AND STRUCTURE.

**NOTICE:**

ALL BIDDERS SHALL COMPLY WITH ALL APPLICABLE LAWS REGULATING THE PRACTICE OF GENERAL CONTRACTING AS CONTAINED IN CHAPTER 87 OF THE GENERAL STATUTES OF NORTH CAROLINA WHICH REQUIRES THE BIDDER TO BE LICENSED BY THE N.C. LICENSING BOARD FOR CONTRACTORS WHEN BIDDING ON ANY NON-FEDERAL AID PROJECT WHERE THE BID IS \$30,000 OR MORE, EXCEPT FOR CERTAIN SPECIALTY WORK AS DETERMINED BY THE LICENSING BOARD. BIDDERS SHALL ALSO COMPLY WITH ALL OTHER APPLICABLE LAWS REGULATING THE PRACTICES OF ELECTRICAL, PLUMBING, HEATING AND AIR CONDITIONING AND REFRIGERATION CONTRACTING AS CONTAINED IN CHAPTER 87 OF THE GENERAL STATUTES OF NORTH CAROLINA. NOTWITHSTANDING THESE LIMITATIONS ON BIDDING, THE BIDDER WHO IS AWARDED ANY FEDERAL - AID FUNDED PROJECT SHALL COMPLY WITH CHAPTER 87 OF THE GENERAL STATUTES OF NORTH CAROLINA FOR LICENSING REQUIREMENTS WITHIN 60 CALENDAR DAYS OF BID OPENING.

**BIDS WILL BE RECEIVED AS SHOWN BELOW:**

**THIS IS A ROADWAY & STRUCTURE PROPOSAL**

**5% BID BOND OR BID DEPOSIT REQUIRED**

---

Line #	Item Number	Sec #	Description	Quantity	Unit Cost	Amount
<b>ROADWAY ITEMS</b>						
0001	0000100000-N	800	MOBILIZATION	Lump Sum	L.S.	
0002	0000400000-N	801	CONSTRUCTION SURVEYING	Lump Sum	L.S.	
0003	0001000000-E	200	CLEARING & GRUBBING .. ACRE(S)	Lump Sum	L.S.	
0004	0008000000-E	200	SUPPLEMENTARY CLEARING & GRUBBING	1 ACR		
0005	0022000000-E	225	UNCLASSIFIED EXCAVATION	18,000 CY		
0006	0028000000-N	SP	TYPE I STANDARD APPROACH FILL STATION ***** (31+94.08 -L-)	Lump Sum	L.S.	
0007	0036000000-E	225	UNDERCUT EXCAVATION	14,000 CY		
0008	0106000000-E	230	BORROW EXCAVATION	138,000 CY		
0009	0127000000-N	235	EMBANKMENT SETTLEMENT GAUGES	2 EA		
0010	0134000000-E	240	DRAINAGE DITCH EXCAVATION	1,148 CY		
0011	0156000000-E	250	REMOVAL OF EXISTING ASPHALT PAVEMENT	4,550 SY		
0012	0177000000-E	250	BREAKING OF EXISTING ASPHALT PAVEMENT	350 SY		
0013	0194000000-E	265	SELECT GRANULAR MATERIAL, CLASS III	11,600 CY		
0014	0196000000-E	270	GEOTEXTILE FOR SOIL STABILIZATION	13,200 SY		
0015	0255000000-E	SP	GENERIC GRADING ITEM HAULING AND DISPOSAL OF PETROLEUM CONTAMINATED SOIL	100 TON		
0016	0318000000-E	300	FOUNDATION CONDITIONING MATERIAL, MINOR STRUCTURES	826 TON		
0017	0320000000-E	300	FOUNDATION CONDITIONING GEOTEXTILE	3,551 SY		

County: CABARRUS

Line #	Item Number	Sec #	Description	Quantity	Unit Cost	Amount
0018	0335200000-E	305	15" DRAINAGE PIPE	616 LF		
0019	0335400000-E	305	24" DRAINAGE PIPE	44 LF		
0020	0335850000-E	305	*** DRAINAGE PIPE ELBOWS (15")	12 EA		
0021	0335850000-E	305	*** DRAINAGE PIPE ELBOWS (24")	2 EA		
0022	0366000000-E	310	15" RC PIPE CULVERTS, CLASS III	492 LF		
0023	0372000000-E	310	18" RC PIPE CULVERTS, CLASS III	336 LF		
0024	0378000000-E	310	24" RC PIPE CULVERTS, CLASS III	436 LF		
0025	0384000000-E	310	30" RC PIPE CULVERTS, CLASS III	180 LF		
0026	0448200000-E	310	15" RC PIPE CULVERTS, CLASS IV	1,752 LF		
0027	0448300000-E	310	18" RC PIPE CULVERTS, CLASS IV	512 LF		
0028	0448400000-E	310	24" RC PIPE CULVERTS, CLASS IV	444 LF		
0029	0448500000-E	310	30" RC PIPE CULVERTS, CLASS IV	44 LF		
0030	0995000000-E	340	PIPE REMOVAL	3,333 LF		
0031	1011000000-N	500	FINE GRADING	Lump Sum	L.S.	
0032	1099500000-E	505	SHALLOW UNDERCUT	735 CY		
0033	1099700000-E	505	CLASS IV SUBGRADE STABILIZATION	1,220 TON		
0034	1121000000-E	520	AGGREGATE BASE COURSE	660 TON		

County: CABARRUS

Line #	Item Number	Sec #	Description	Quantity	Unit Cost	Amount
0035	1220000000-E	545	INCIDENTAL STONE BASE	250 TON		
0036	1297000000-E	607	MILLING ASPHALT PAVEMENT, **** DEPTH (2-1/2")	625 SY		
0037	1330000000-E	607	INCIDENTAL MILLING	2,230 SY		
0038	1491000000-E	610	ASPHALT CONC BASE COURSE, TYPE B25.0C	8,000 TON		
0039	1503000000-E	610	ASPHALT CONC INTERMEDIATE COURSE, TYPE I19.0C	4,500 TON		
0040	1519000000-E	610	ASPHALT CONC SURFACE COURSE, TYPE S9.5B	5,400 TON		
0041	1575000000-E	620	ASPHALT BINDER FOR PLANT MIX	930 TON		
0042	1693000000-E	654	ASPHALT PLANT MIX, PAVEMENT REPAIR	340 TON		
0043	1891000000-E	SP	GENERIC PAVING ITEM 7" JOINTED PAVEMENT, TRUCK APRON	700 SY		
0044	2022000000-E	815	SUBDRAIN EXCAVATION	112 CY		
0045	2026000000-E	815	GEOTEXTILE FOR SUBSURFACE DRAINS	500 SY		
0046	2036000000-E	815	SUBDRAIN COARSE AGGREGATE	84 CY		
0047	2044000000-E	815	6" PERFORATED SUBDRAIN PIPE	500 LF		
0048	2070000000-N	815	SUBDRAIN PIPE OUTLET	1 EA		
0049	2077000000-E	815	6" OUTLET PIPE	6 LF		
0050	2275000000-E	SP	FLOWABLE FILL	4 CY		
0051	2286000000-N	840	MASONRY DRAINAGE STRUCTURES	60 EA		

County: CABARRUS

Line #	Item Number	Sec #	Description	Quantity	Unit Cost	Amount
0052	2308000000-E	840	MASONRY DRAINAGE STRUCTURES	9.3 LF		
0053	2364000000-N	840	FRAME WITH TWO GRATES, STD 840.16	19 EA		
0054	2366000000-N	840	FRAME WITH TWO GRATES, STD 840.24	6 EA		
0055	2367000000-N	840	FRAME WITH TWO GRATES, STD 840.29	9 EA		
0056	2374000000-N	840	FRAME WITH GRATE & HOOD, STD 840.03, TYPE ** (E)	2 EA		
0057	2374000000-N	840	FRAME WITH GRATE & HOOD, STD 840.03, TYPE ** (F)	10 EA		
0058	2374000000-N	840	FRAME WITH GRATE & HOOD, STD 840.03, TYPE ** (G)	11 EA		
0059	2451000000-N	852	CONCRETE TRANSITIONAL SECTION FOR DROP INLET	5 EA		
0060	2462000000-E	836	*** SLUICE GATE (8")	1 EA		
0061	2473000000-N	SP	GENERIC DRAINAGE ITEM BICYCLE SAFE STEEL FRAME AND GRATE	2 EA		
0062	2535000000-E	846	*** X *** CONCRETE CURB (9" X 18")	239 LF		
0063	2542000000-E	846	1'-6" CONCRETE CURB & GUTTER	380 LF		
0064	2549000000-E	846	2'-6" CONCRETE CURB & GUTTER	5,580 LF		
0065	2570000000-N	SP	MODIFIED CONCRETE FLUME	2 EA		
0066	2577000000-E	846	CONCRETE EXPRESSWAY GUTTER	750 LF		
0067	2591000000-E	848	4" CONCRETE SIDEWALK	1,530 SY		

County: CABARRUS

Line #	Item Number	Sec #	Description	Quantity	Unit Cost	Amount
0068	2605000000-N	848	CONCRETE CURB RAMPS	5 EA		
0069	2612000000-E	848	6" CONCRETE DRIVEWAY	300 SY		
0070	2655000000-E	852	5" MONOLITHIC CONCRETE ISLANDS (KEYED IN)	930 SY		
0071	2724000000-E	857	PRECAST REINFORCED CONCRETE BARRIER, SINGLE FACED	200 LF		
0072	2800000000-N	858	ADJUSTMENT OF CATCH BASINS	2 EA		
0073	2830000000-N	858	ADJUSTMENT OF MANHOLES	1 EA		
0074	3030000000-E	862	STEEL BEAM GUARDRAIL	2,775 LF		
0075	3150000000-N	862	ADDITIONAL GUARDRAIL POSTS	5 EA		
0076	3215000000-N	SP	GUARDRAIL ANCHOR UNITS, TYPE III	4 EA		
0077	3287000000-N	SP	GUARDRAIL END UNITS, TYPE TL-3	4 EA		
0078	3628000000-E	876	RIP RAP, CLASS I	27 TON		
0079	3649000000-E	876	RIP RAP, CLASS B	39 TON		
0080	3656000000-E	876	GEOTEXTILE FOR DRAINAGE	691 SY		
0081	4072000000-E	903	SUPPORTS, 3-LB STEEL U-CHANNEL	910 LF		
0082	4102000000-N	904	SIGN ERECTION, TYPE E	74 EA		
0083	4108000000-N	904	SIGN ERECTION, TYPE F	2 EA		
0084	4155000000-N	907	DISPOSAL OF SIGN SYSTEM, U- CHANNEL	30 EA		



County: CABARRUS

Line #	Item Number	Sec #	Description	Quantity	Unit Cost	Amount
0085	4400000000-E	1110	WORK ZONE SIGNS (STATIONARY)	573 SF		
0086	4405000000-E	1110	WORK ZONE SIGNS (PORTABLE)	611 SF		
0087	4410000000-E	1110	WORK ZONE SIGNS (BARRICADE MOUNTED)	220 SF		
0088	4430000000-N	1130	DRUMS	150 EA		
0089	4435000000-N	1135	CONES	50 EA		
0090	4445000000-E	1145	BARRICADES (TYPE III)	200 LF		
0091	4455000000-N	1150	FLAGGER	143 DAY		
0092	4480000000-N	1165	TMA	1 EA		
0093	4507000000-E	1170	WATER FILLED BARRIER	1,090 LF		
0094	4508000000-E	SP	REMOVE AND RESET WATER FILLED BARRIER	370 LF		
0095	4510000000-N	1190	LAW ENFORCEMENT	160 HR		
0096	4516000000-N	1180	SKINNY DRUM	150 EA		
0097	4685000000-E	1205	THERMOPLASTIC PAVEMENT MARKING LINES (4", 90 MILS)	26,009 LF		
0098	4695000000-E	1205	THERMOPLASTIC PAVEMENT MARKING LINES (8", 90 MILS)	688 LF		
0099	4709000000-E	1205	THERMOPLASTIC PAVEMENT MARKING LINES (24", 90 MILS)	240 LF		
0100	4725000000-E	1205	THERMOPLASTIC PAVEMENT MARKING SYMBOL (90 MILS)	11 EA		
0101	4726110000-E	1205	HEATED-IN-PLACE THERMOPLASTIC PAVEMENT MARKING SYMBOL (90 MILS)	24 EA		

County: CABARRUS

Line #	Item Number	Sec #	Description	Quantity	Unit Cost	Amount
0102	4770000000-E	1205	COLD APPLIED PLASTIC PAVEMENT MARKING LINES, TYPE ** (4") (II)	1,912 LF		
0103	4810000000-E	1205	PAINT PAVEMENT MARKING LINES (4")	33,761 LF		
0104	4820000000-E	1205	PAINT PAVEMENT MARKING LINES (8")	638 LF		
0105	4835000000-E	1205	PAINT PAVEMENT MARKING LINES (24")	185 LF		
0106	4845000000-N	1205	PAINT PAVEMENT MARKING SYMBOL	5 EA		
0107	4850000000-E	1205	REMOVAL OF PAVEMENT MARKING LINES (4")	3,280 LF		
0108	4865000000-E	1205	REMOVAL OF PAVEMENT MARKING LINES (12")	88 LF		
0109	4870000000-E	1205	REMOVAL OF PAVEMENT MARKING LINES (24")	121 LF		
0110	4875000000-N	1205	REMOVAL OF PAVEMENT MARKING SYMBOLS & CHARACTERS	7 EA		
0111	4900000000-N	1251	PERMANENT RAISED PAVEMENT MARKERS	115 EA		
0112	5325200000-E	1510	2" WATER LINE	1,088 LF		
0113	5325600000-E	1510	6" WATER LINE	728 LF		
0114	5325800000-E	1510	8" WATER LINE	2,693 LF		
0115	5326200000-E	1510	12" WATER LINE	1,245 LF		
0116	5329000000-E	1510	DUCTILE IRON WATER PIPE FITTINGS	10,151 LB		
0117	5536000000-E	1515	2" VALVE	8 EA		
0118	5540000000-E	1515	6" VALVE	11 EA		

County: CABARRUS

Line #	Item Number	Sec #	Description	Quantity	Unit Cost	Amount
0119	5546000000-E	1515	8" VALVE	6 EA		
0120	5558000000-E	1515	12" VALVE	5 EA		
0121	5648000000-N	1515	RELOCATE WATER METER	21 EA		
0122	5649000000-N	1515	RECONNECT WATER METER	8 EA		
0123	5672000000-N	1515	RELOCATE FIRE HYDRANT	5 EA		
0124	5673000000-E	1515	FIRE HYDRANT LEG	112 LF		
0125	5686500000-E	1515	WATER SERVICE LINE	1,034 LF		
0126	5691300000-E	1520	8" SANITARY GRAVITY SEWER	533 LF		
0127	5768000000-N	1520	SANITARY SEWER CLEAN-OUT	27 EA		
0128	5768500000-E	1520	SEWER SERVICE LINE	1,035 LF		
0129	5775000000-E	1525	4' DIA UTILITY MANHOLE	5 EA		
0130	5781000000-E	1525	UTILITY MANHOLE WALL 4' DIA	2 LF		
0131	5800000000-E	1530	ABANDON 6" UTILITY PIPE	1,296 LF		
0132	5801000000-E	1530	ABANDON 8" UTILITY PIPE	2,303 LF		
0133	5802000000-E	1530	ABANDON 10" UTILITY PIPE	1,032 LF		
0134	5815000000-N	1530	REMOVE WATER METER	5 EA		
0135	5816000000-N	1530	ABANDON UTILITY MANHOLE	1 EA		

County: CABARRUS

Line #	Item Number	Sec #	Description	Quantity	Unit Cost	Amount
0136	5828000000-N	1530	REMOVE UTILITY MANHOLE	1 EA		
0137	5835600000-E	1540	12" ENCASEMENT PIPE	176 LF		
0138	6000000000-E	1605	TEMPORARY SILT FENCE	19,065 LF		
0139	6006000000-E	1610	STONE FOR EROSION CONTROL, CLASS A	790 TON		
0140	6009000000-E	1610	STONE FOR EROSION CONTROL, CLASS B	3,790 TON		
0141	6012000000-E	1610	SEDIMENT CONTROL STONE	2,610 TON		
0142	6015000000-E	1615	TEMPORARY MULCHING	18 ACR		
0143	6018000000-E	1620	SEED FOR TEMPORARY SEEDING	1,000 LB		
0144	6021000000-E	1620	FERTILIZER FOR TEMPORARY SEEDING	7.5 TON		
0145	6024000000-E	1622	TEMPORARY SLOPE DRAINS	1,840 LF		
0146	6030000000-E	1630	SILT EXCAVATION	10,760 CY		
0147	6036000000-E	1631	MATTING FOR EROSION CONTROL	17,600 SY		
0148	6037000000-E	SP	COIR FIBER MAT	75 SY		
0149	6038000000-E	SP	PERMANENT SOIL REINFORCEMENT MAT	2,370 SY		
0150	6042000000-E	1632	1/4" HARDWARE CLOTH	4,235 LF		
0151	6071012000-E	SP	COIR FIBER WATTLE	1,250 LF		
0152	6071020000-E	SP	POLYACRYLAMIDE (PAM)	955 LB		

County: CABARRUS

Line #	Item Number	Sec #	Description	Quantity	Unit Cost	Amount
0153	6071030000-E	1640	COIR FIBER BAFFLE	2,490 LF		
0154	6071050000-E	SP	*** SKIMMER (1-1/2")	6 EA		
0155	6071050000-E	SP	*** SKIMMER (4")	1 EA		
0156	6084000000-E	1660	SEEDING & MULCHING	24 ACR		
0157	6087000000-E	1660	MOWING	18 ACR		
0158	6090000000-E	1661	SEED FOR REPAIR SEEDING	200 LB		
0159	6093000000-E	1661	FERTILIZER FOR REPAIR SEEDING	0.75 TON		
0160	6096000000-E	1662	SEED FOR SUPPLEMENTAL SEEDING	550 LB		
0161	6108000000-E	1665	FERTILIZER TOPDRESSING	16.25 TON		
0162	6114500000-N	1667	SPECIALIZED HAND MOWING	10 MHR		
0163	6117000000-N	SP	RESPONSE FOR EROSION CONTROL	75 EA		
0164	6117500000-N	SP	CONCRETE WASHOUT STRUCTURE	4 EA		
0165	6132000000-N	SP	GENERIC EROSION CONTROL ITEM FABRIC INSERT INLET PROTECTION DEVICE	8 EA		
0166	6132000000-N	SP	GENERIC EROSION CONTROL ITEM FABRIC INSERT INLET PROTECTION DEVICE CLEANOUT	48 EA		
0167	7948000000-N	1757	TRAFFIC SIGNAL REMOVAL	2 EA		
<b>WALL ITEMS</b>						
0168	8801000000-E	SP	MSE RETAINING WALL NO **** (1)	1,075 SF		

County: CABARRUS

Line #	Item Number	Sec #	Description	Quantity	Unit Cost	Amount
<b>STRUCTURE ITEMS</b>						
0169	8091000000-N	410	FOUNDATION EXCAVATION FOR BENT ** AT STATION ***** (1, 31+94.08 -L-)	Lump Sum	L.S.	
0170	8091000000-N	410	FOUNDATION EXCAVATION FOR BENT ** AT STATION ***** (2, 31+94.08 -L-)	Lump Sum	L.S.	
0171	8091000000-N	410	FOUNDATION EXCAVATION FOR BENT ** AT STATION ***** (3, 31+94.08 -L-)	Lump Sum	L.S.	
0172	8147000000-E	420	REINFORCED CONCRETE DECK SLAB	20,998 SF		
0173	8161000000-E	420	GROOVING BRIDGE FLOORS	17,294 SF		
0174	8182000000-E	420	CLASS A CONCRETE (BRIDGE)	317.3 CY		
0175	8210000000-N	422	BRIDGE APPROACH SLABS, STATION ***** (31+94.08 -L-)	Lump Sum	L.S.	
0176	8217000000-E	425	REINFORCING STEEL (BRIDGE)	54,375 LB		
0177	8238000000-E	425	SPIRAL COLUMN REINFORCING STEEL (BRIDGE)	4,498 LB		
0178	8277000000-E	430	MODIFIED 72" PRESTRESSED CONC GIRDERS	2,368.33 LF		
0179	8328200000-E	450	PILE DRIVING EQUIPMENT SETUP FOR *** STEEL PILES (HP 12 X 53)	83 EA		
0180	8364000000-E	450	HP 12 X 53 STEEL PILES	4,735 LF		
0181	8391000000-N	450	STEEL PILE POINTS	42 EA		
0182	8392500000-E	450	PREDRILLING FOR PILES	120 LF		
0183	8393000000-N	450	PILE REDRIVES	10 EA		

County: CABARRUS

Line #	Item Number	Sec #	Description	Quantity	Unit Cost	Amount
0184	8475000000-E	460	TWO BAR METAL RAIL	937.67 LF		
0185	8517000000-E	460	1'*** X ***** CONCRETE PARAPET (1'-2" X 2'-6")	476.33 LF		
0186	8517000000-E	460	1'*** X ***** CONCRETE PARAPET (1'-2" X 3'-2 11/16")	476.33 LF		
0187	8524000000-E	SP	*** CHAIN LINK FENCE (72")	400 LF		
0188	8531000000-E	462	4" SLOPE PROTECTION	1,065 SY		
0189	8657000000-N	430	ELASTOMERIC BEARINGS	Lump Sum	L.S.	
0190	8692000000-N	SP	FOAM JOINT SEALS	Lump Sum	L.S.	

0832/Nov01/Q528377.26/D786103072000/E190

Total Amount Of Bid For Entire Project :

**HINDE ENGINEERING**  
 License No. C-2639  
 401 Harrison Oaks Blvd., Suite 220 Cary, NC 27513

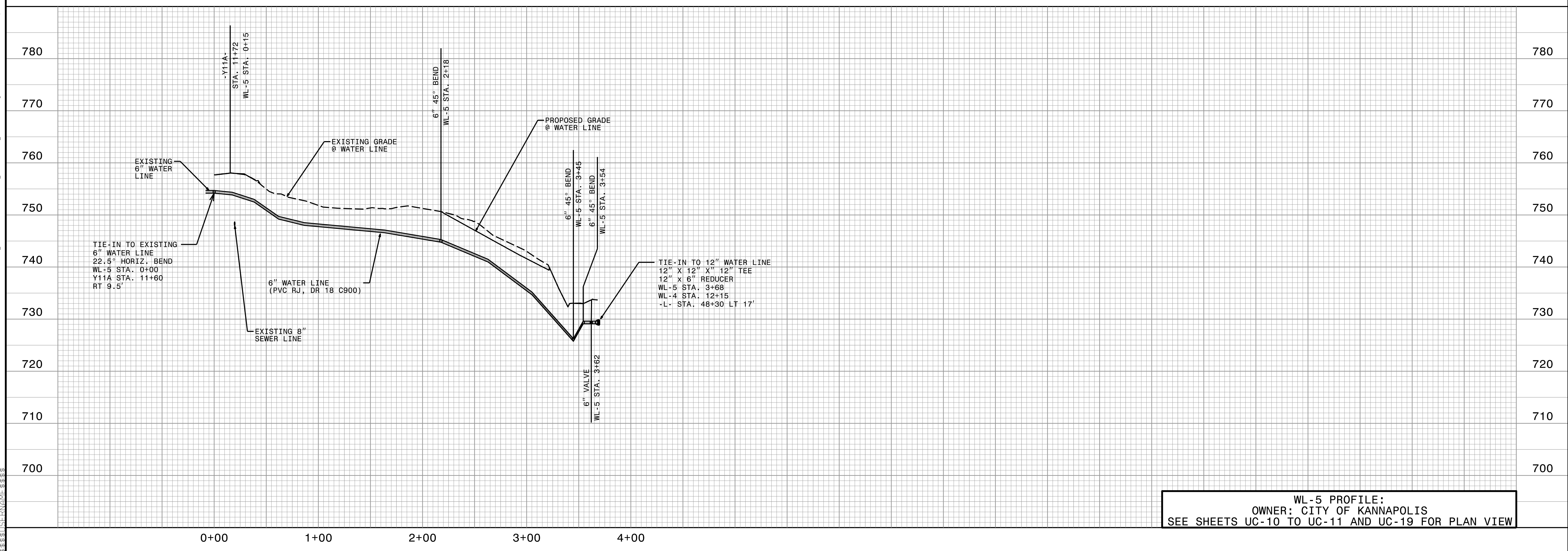
**DOCUMENT NOT CONSIDERED FINAL  
 UNLESS ALL SIGNATURES COMPLETED**

PROJECT REFERENCE NO. <b>Y-4810K</b>	SHEET NO. <b>UC-23</b>
DESIGNED BY: <b>JKC</b>	
DRAWN BY: <b>JNA</b>	
CHECKED BY: <b>JKC</b>	
APPROVED BY: <b>CLS</b>	
REVISED:	
NORTH CAROLINA DEPARTMENT OF TRANSPORTATION UTILITIES ENGINEERING SEC. PHONE: (919) 707-6690 FAX: (919) 250-4151	
UTILITY CONSTRUCTION PLANS ONLY	

### UTILITY CONSTRUCTION



**WL-4 PROFILE:**  
 OWNER: CITY OF KANNAPOLIS  
 SEE SHEETS UC-9 TO UC-11 AND UC-18 FOR PLAN VIEW



**WL-5 PROFILE:**  
 OWNER: CITY OF KANNAPOLIS  
 SEE SHEETS UC-10 TO UC-11 AND UC-19 FOR PLAN VIEW

25-OCT-2022 10:00  
 C:\Users\jstevens\OneDrive\Documents\Projects\2017\A2017401.0000.NCDOT.Y-4810K\Design\Utilities\Engineering\UC\Proj\Y4810K\_Ut\_UC23.pfl\_psh.dgn

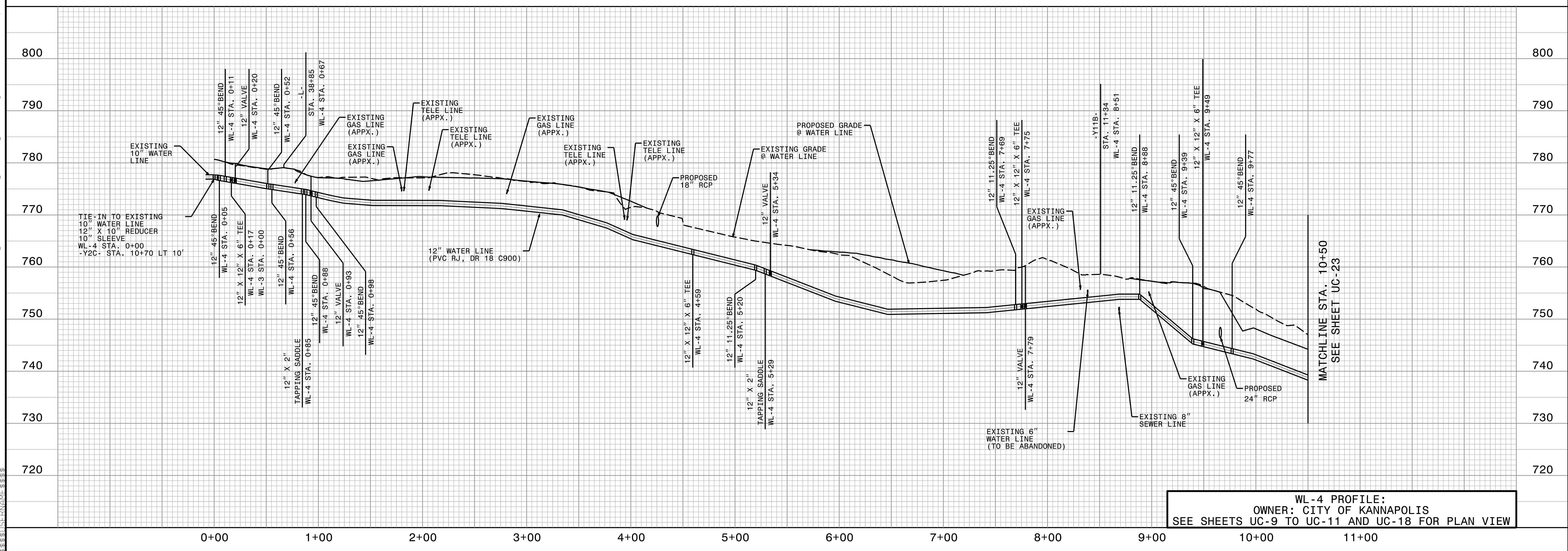
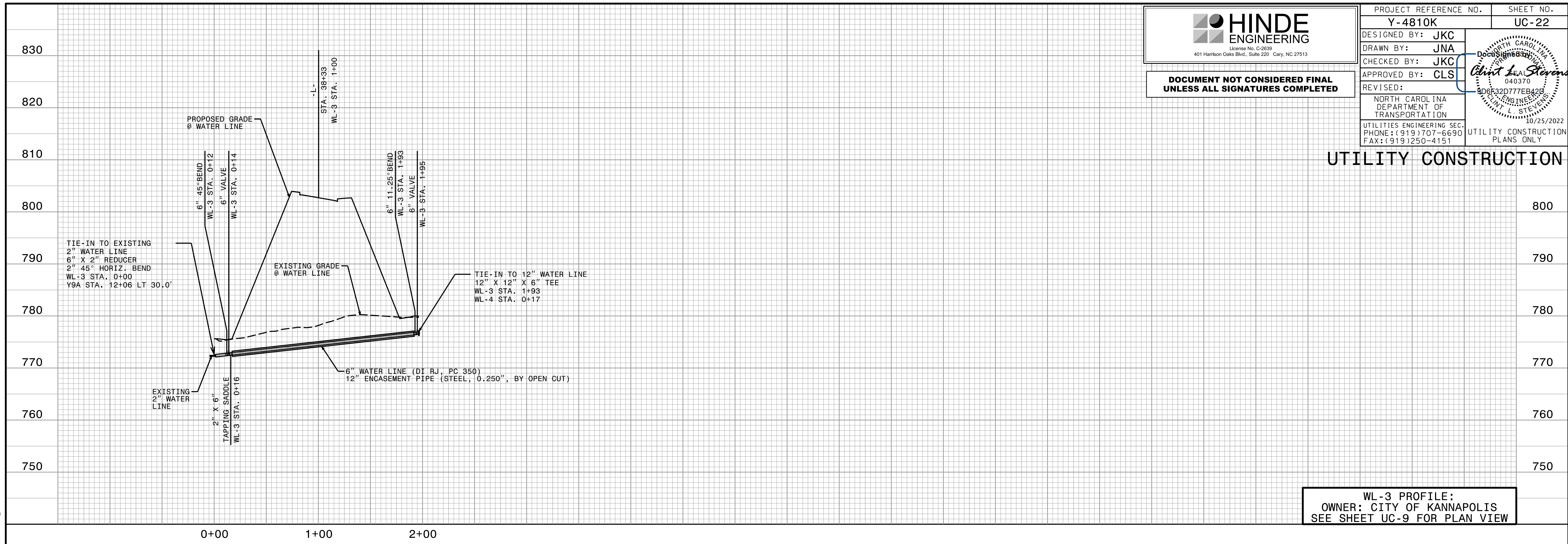


**HINDE ENGINEERING**  
 License No. C-2639  
 401 Harrison Oaks Blvd., Suite 220 Cary, NC 27513

**DOCUMENT NOT CONSIDERED FINAL  
 UNLESS ALL SIGNATURES COMPLETED**

PROJECT REFERENCE NO. <b>Y-4810K</b>	SHEET NO. <b>UC-22</b>
DESIGNED BY: <b>JKC</b>	
DRAWN BY: <b>JNA</b>	
CHECKED BY: <b>JKC</b>	
APPROVED BY: <b>CLS</b>	
REVISED:	NORTH CAROLINA DEPARTMENT OF TRANSPORTATION UTILITIES ENGINEERING SEC. PHONE: (919) 707-6690 FAX: (919) 250-4151
UTILITY CONSTRUCTION PLANS ONLY	

### UTILITY CONSTRUCTION



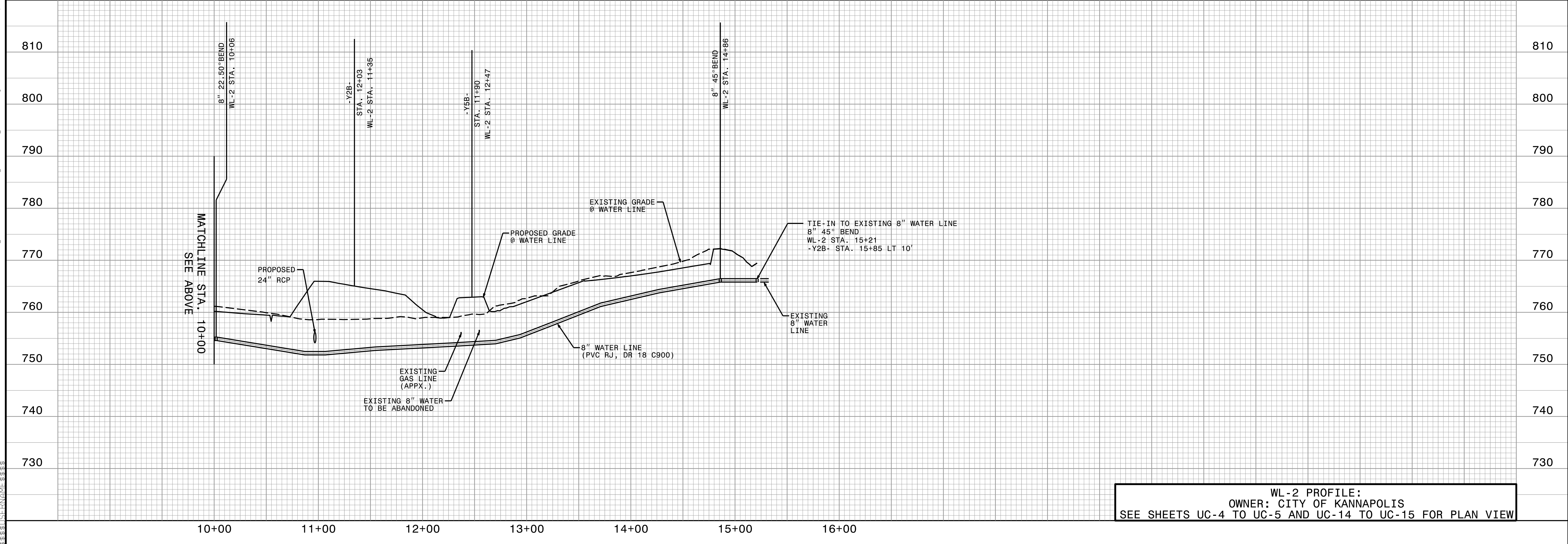
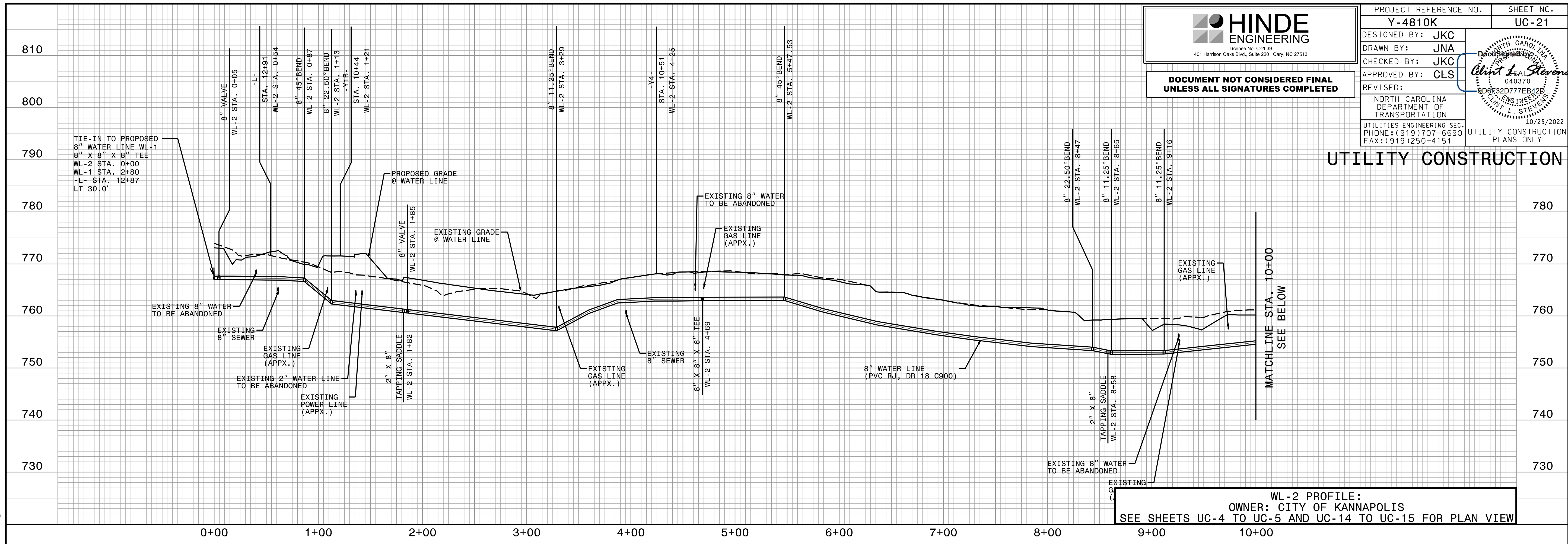
25-001-2022-10-5-56 PROJECTS\2017\A2017401.0000\_NCDOT\_Y-4810K\Design\Utilities\Engineering\UC\Proj\Y4810K\_Ut\_UC22.pfl\_psh.dgn  
 3:33:51 PM 10/25/2022

**HINDE ENGINEERING**  
 License No. C-2639  
 401 Harrison Oaks Blvd., Suite 220 Cary, NC 27513

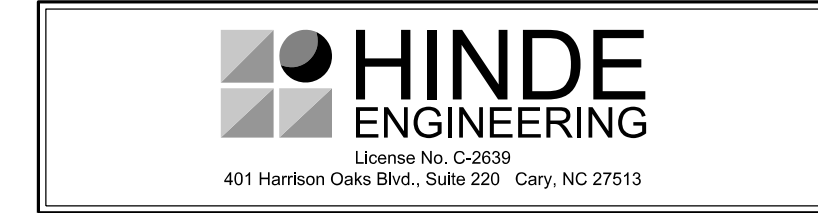
**DOCUMENT NOT CONSIDERED FINAL  
 UNLESS ALL SIGNATURES COMPLETED**

PROJECT REFERENCE NO. <b>Y-4810K</b>	SHEET NO. <b>UC-21</b>
DESIGNED BY: <b>JKC</b>	
DRAWN BY: <b>JNA</b>	
CHECKED BY: <b>JKC</b>	
APPROVED BY: <b>CLS</b>	
REVISED:	10/25/2022
NORTH CAROLINA DEPARTMENT OF TRANSPORTATION	
UTILITIES ENGINEERING SEC. PHONE: (919) 707-6690 FAX: (919) 250-4151	UTILITY CONSTRUCTION PLANS ONLY

### UTILITY CONSTRUCTION



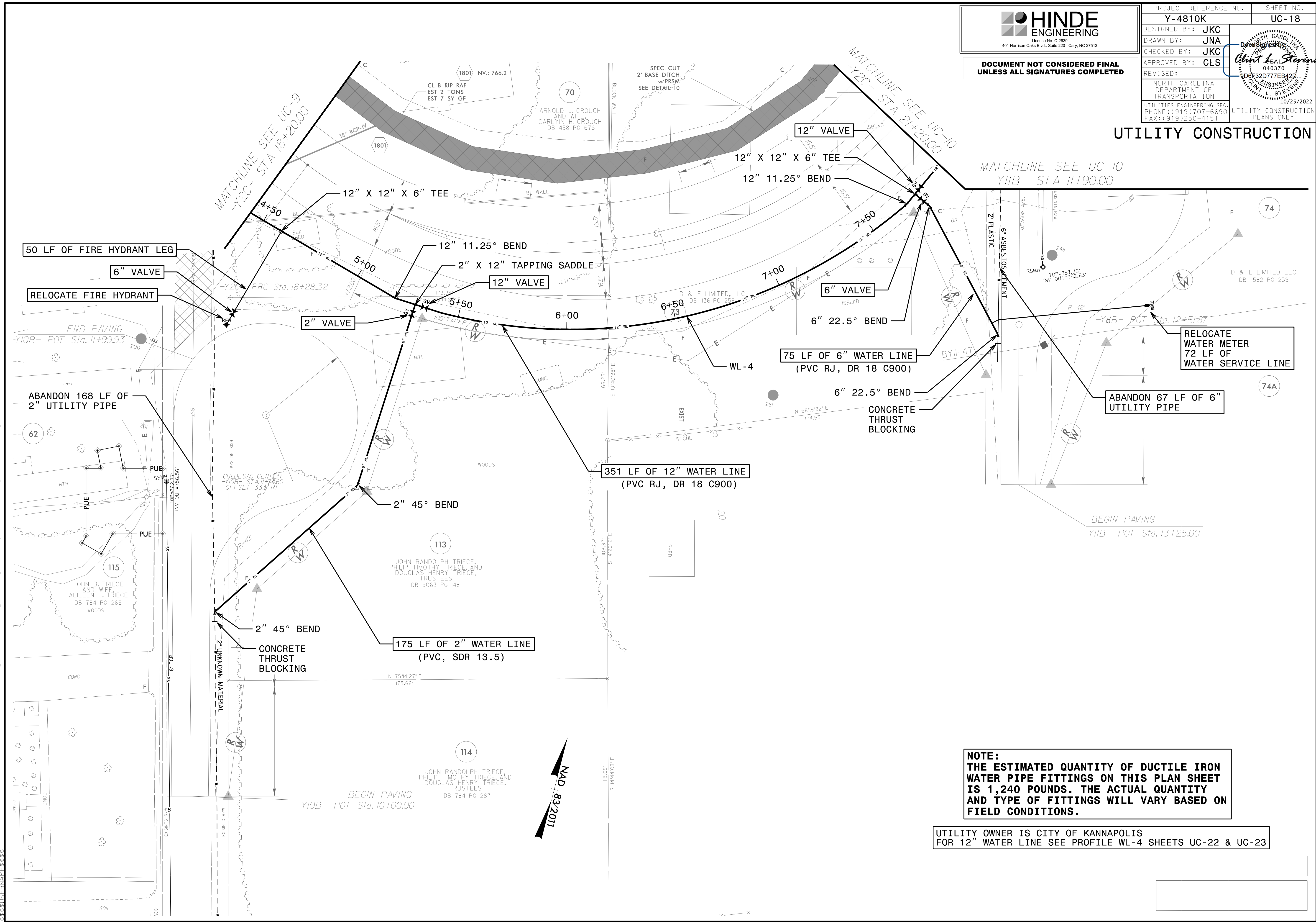
25-OCT-2022 10:56:56 PROJECTS\2017\A2017401.0000.NC001\_Y-4810K\Design\Utilities\Engineering\UC\Proj\Y4810K\_Ut\_UC21\_Ut\_UC21.pf1\_psh.dgn



**DOCUMENT NOT CONSIDERED FINAL  
UNLESS ALL SIGNATURES COMPLETED**

PROJECT REFERENCE NO. <b>Y-4810K</b>	SHEET NO. <b>UC-18</b>
DESIGNED BY: <b>JKC</b>	
DRAWN BY: <b>JNA</b>	
CHECKED BY: <b>JKC</b>	
APPROVED BY: <b>CLS</b>	
REVISED:	
NORTH CAROLINA DEPARTMENT OF TRANSPORTATION UTILITIES ENGINEERING SEC. PHONE: (919) 707-6690 FAX: (919) 250-4151	
UTILITY CONSTRUCTION PLANS ONLY	

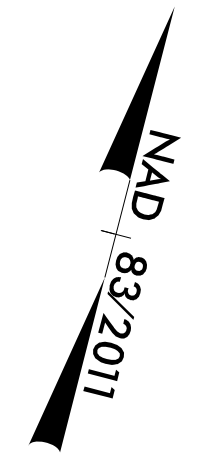
# UTILITY CONSTRUCTION

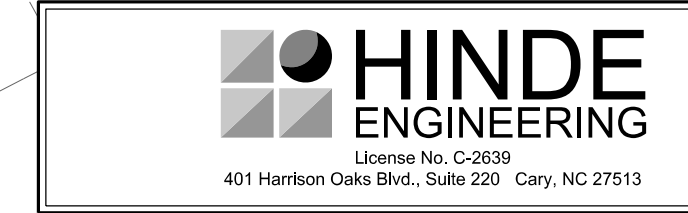


**NOTE:**  
 THE ESTIMATED QUANTITY OF DUCTILE IRON  
 WATER PIPE FITTINGS ON THIS PLAN SHEET  
 IS 1,240 POUNDS. THE ACTUAL QUANTITY  
 AND TYPE OF FITTINGS WILL VARY BASED ON  
 FIELD CONDITIONS.

UTILITY OWNER IS CITY OF KANNAPOLIS  
 FOR 12" WATER LINE SEE PROFILE WL-4 SHEETS UC-22 & UC-23

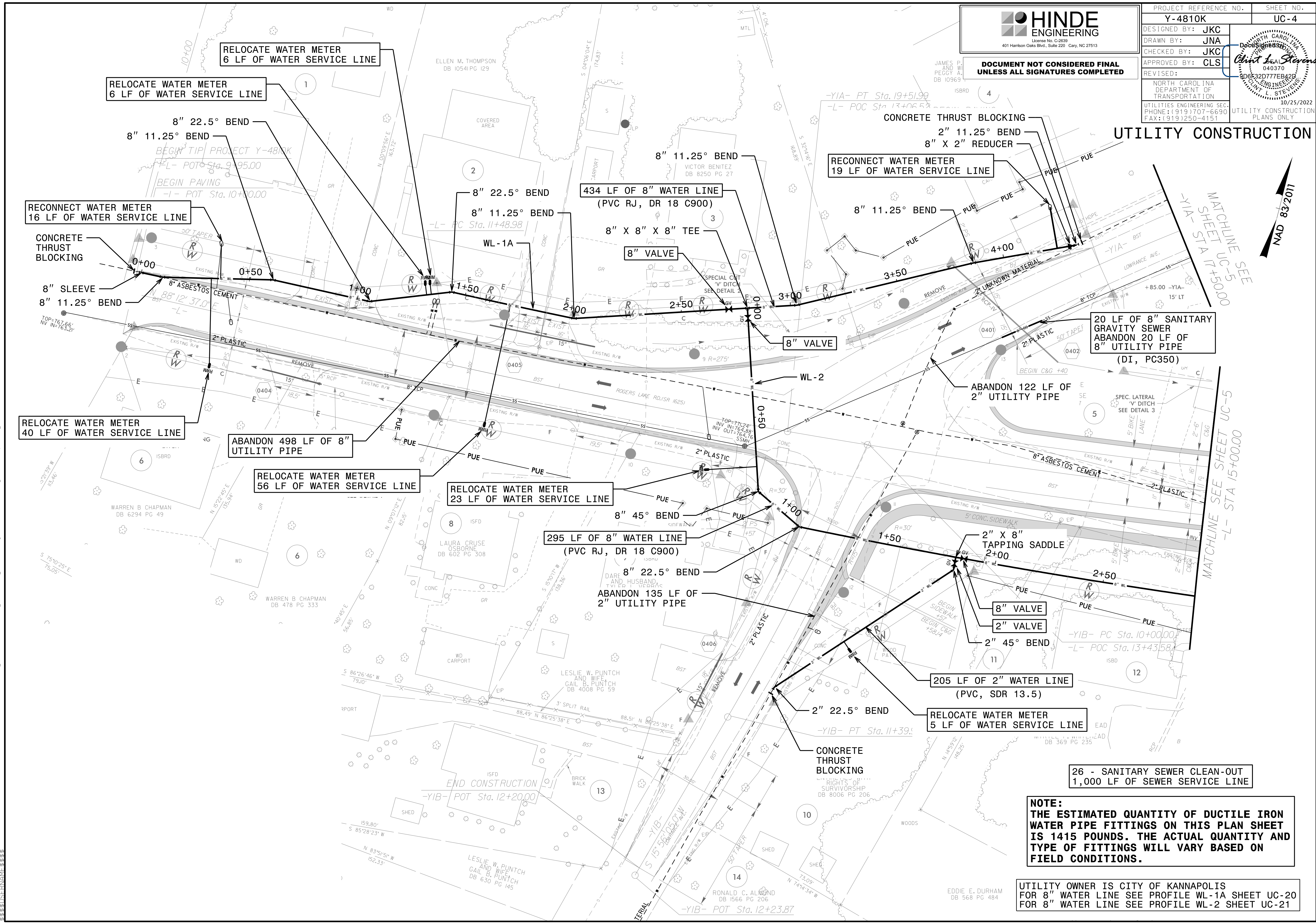
25-OCT-2022 10:55:56 PROJECTS\2017\A2017401.0000.NCDDOT.Y-4810K\Design\Utilities\Engineering\UC\Proj\Y4810K-ut-rd\18\_UC18\_psh.dgn  
 3:33:58 PM





DOCUMENT NOT CONSIDERED FINAL  
UNLESS ALL SIGNATURES COMPLETED

PROJECT REFERENCE NO.	Y-4810K	SHEET NO.	UC-4
DESIGNED BY:	JKC		10/25/2022 UTILITY CONSTRUCTION PLANS ONLY
DRAWN BY:	JNA		
CHECKED BY:	JKC		
APPROVED BY:	CLS		
REVISED:			
NORTH CAROLINA DEPARTMENT OF TRANSPORTATION			
UTILITIES ENGINEERING SEC. PHONE: (919) 707-6690 FAX: (919) 250-4151			



**NOTE:**  
 THE ESTIMATED QUANTITY OF DUCTILE IRON WATER PIPE FITTINGS ON THIS PLAN SHEET IS 1415 POUNDS. THE ACTUAL QUANTITY AND TYPE OF FITTINGS WILL VARY BASED ON FIELD CONDITIONS.

UTILITY OWNER IS CITY OF KANNAPOLIS  
 FOR 8" WATER LINE SEE PROFILE WL-1A SHEET UC-20  
 FOR 8" WATER LINE SEE PROFILE WL-2 SHEET UC-21

25-OCT-2022 10:55:56 PROJECTS\2017\A2017401.000\NCDOT\_Y-4810K\Design\Utilities\Engineering\UC\ProJ\Y4810K\ut\_rdy4\_UC04\_psh.dgn  
 3:38:51 PM

# SURVEY CONTROL SHEET

EY15

POINT	N	E	BEARING	DIST
POT	632629.877	1516627.314		
LINE			N 67°14'32.5" E	1133.51
POT	633068.357	1517672.581		

EY16

POINT	N	E	BEARING	DIST
POT	632015.399	1514811.382		
LINE			N 41°23'19.7" W	208.04
POT	632171.482	1514673.831		

EY17

POINT	N	E	BEARING	DIST	DELTA	D	L	T	R
PC	632216.800	1515174.364							
CURVE			N 39°02'37.7" W	213.06	04°48'03.4"(LT)	02°15'09.5"	213.13	106.63	2543.51
PT	632382.279	1515040.152							

EY18

POINT	N	E	BEARING	DIST	DELTA	D	L	T	R
PC	632339.069	1515405.274							
CURVE			N 40°42'39.2" W	170.67	04°26'04.7"(LT)	02°35'51.8"	170.71	85.40	2205.61
PT	632468.438	1515293.956							
LINE			N 42°55'41.6" W	36.43					
POT	632495.115	1515269.142							

EY19

POINT	N	E	BEARING	DIST
POT	632503.772	1515882.133		
LINE			N 14°17'00.3" W	218.51
POT	632715.529	1515828.222		

**NOTES:**

1. PROJECT CONTROL WAS ESTABLISHED USING GNSS, THE GLOBAL NAVIGATION SATELLITE SYSTEM.
2. THE SURVEY CONTROL DATA FOR THIS PROJECT HAS BEEN COMPILED FROM VARIOUS SOURCES. IF FURTHER INFORMATION REGARDING PROJECT CONTROL IS NEEDED, PLEASE CONTACT THE LOCATION AND SURVEYS UNIT.

REVISIONS

6/2/09  
C:\JUL-2019\12:39\Projects\4810K\LS10-18-074\_RW.staking\From\_roadwayserver\_190722\4810k\_ls\_rw02c-11.dgn

# SURVEY CONTROL SHEET

PROJECT REFERENCE NO. Y-4810K	SHEET NO. RW02C-10
Location and Surveys	

EY11									
POINT	N	E	BEARING	DIST	DELTA	D	L	T	R
POT	632366.278	1517862.843							
LINE			N 14°10'06.6" W	217.83					
POT	632577.478	1517809.525							
LINE			N 16°15'40.6" W	60.58					
POT	632635.635	1517792.562							
LINE			N 14°13'12.4" W	374.37					
PC	632998.529	1517700.600							
CURVE			N 25°13'25.3" W	107.98	22°00'25.7"(LT)	20°15'22.1"	108.64	55.00	282.86
PT	633096.212	1517654.584							
LINE			N 36°13'38.1" W	90.54					
POT	633169.246	1517601.078							
LINE			N 37°14'01.7" W	157.95					
POT	633295.003	1517505.506							
LINE			N 36°33'41.3" W	154.44					
POT	633419.050	1517413.510							
LINE			N 34°28'15.1" W	89.27					
POT	633492.643	1517362.986							
LINE			N 32°00'41.2" W	145.57					
POT	633616.079	1517285.821							

EY12				
POINT	N	E	BEARING	DIST
POT	632627.373	1518416.822		
LINE			N 22°46'25.7" W	216.15
POT	632826.673	1518333.151		

EY13				
POINT	N	E	BEARING	DIST
POT	632868.904	1518434.604		
LINE			N 10°45'40.3" W	246.36
POT	633110.932	1518388.604		

EY14				
POINT	N	E	BEARING	DIST
POT	633240.620	1516473.244		
LINE			N 76°26'54.5" E	1072.83
POT	633492.005	1517516.203		

**NOTES:**

1. PROJECT CONTROL WAS ESTABLISHED USING GNSS, THE GLOBAL NAVIGATION SATELLITE SYSTEM.
2. THE SURVEY CONTROL DATA FOR THIS PROJECT HAS BEEN COMPILED FROM VARIOUS SOURCES. IF FURTHER INFORMATION REGARDING PROJECT CONTROL IS NEEDED, PLEASE CONTACT THE LOCATION AND SURVEYS UNIT.

REVISIONS

6/2/09  
C:\JUL-2019\12:35\Projects\4810K\LS10-18-074\_RW\_staking\From\_roadwayserver-190722\4810k\_ls\_rw02c-10.dgn