



ELEVATION

7'-0"

3'-6"

MID SPAN DIAPHRAGM

INTERIOR BENT DIAPHRAGM

HALF END SECTION

PROJECT NO. 5-5975

ROBERTSON COUNTY

STATION: 12+00 to 12+50

STATE OF NORTH CAROLINA  
**STATE HIGHWAY COMMISSION**  
 RALEIGH  
 SUPERSTRUCTURE

END OF BENT DETAIL





BAR TYPES  
All dimensions in feet

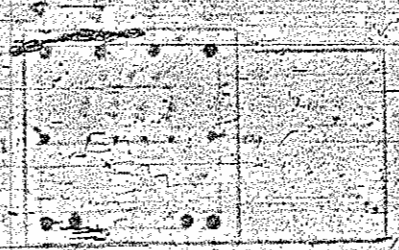
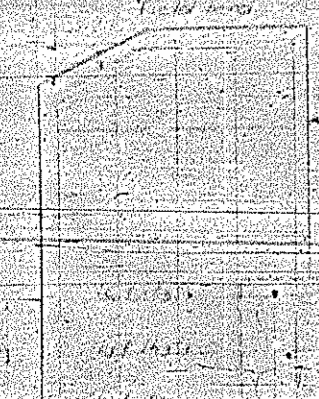
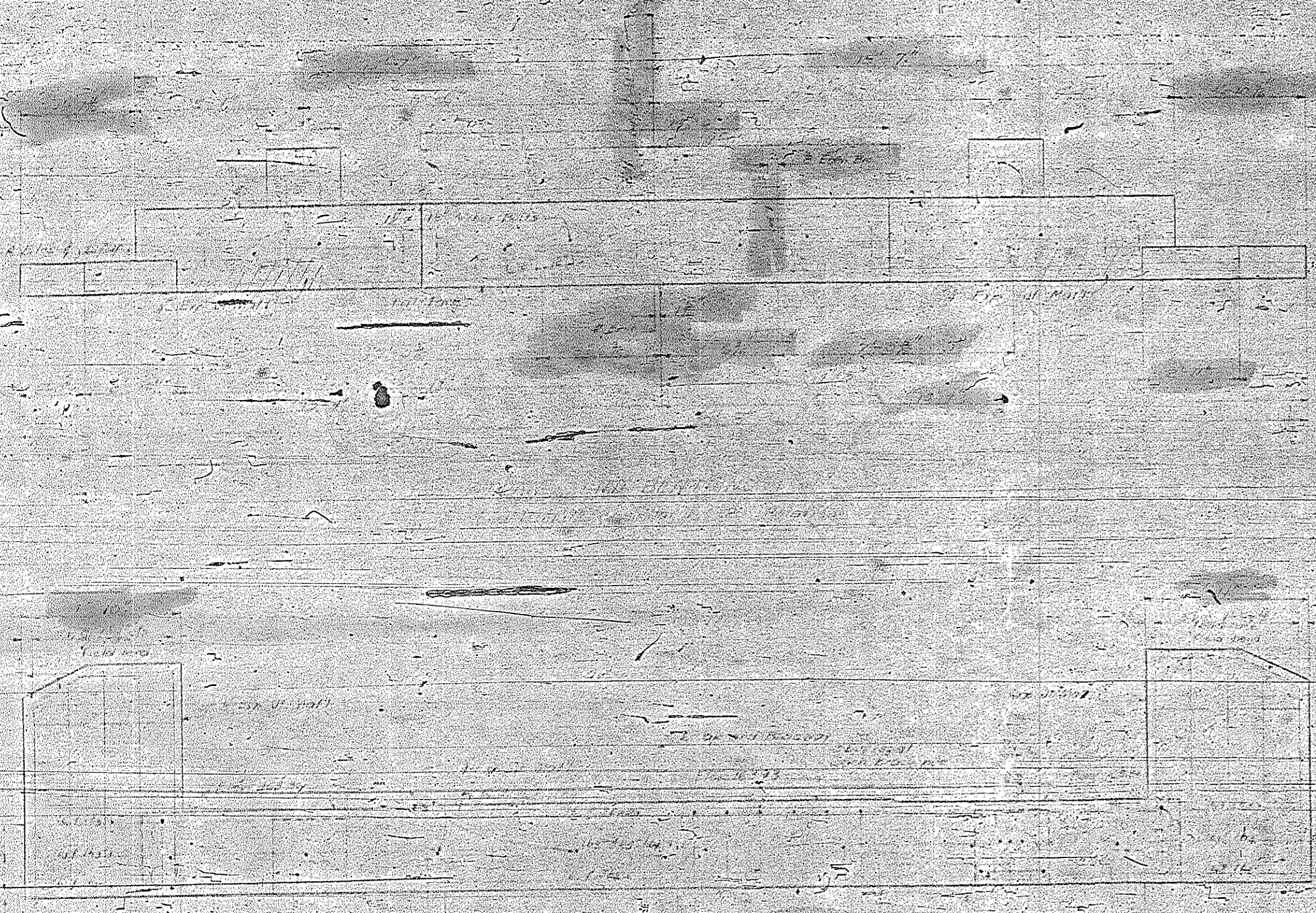
**BILL OF MATERIAL**  
FOR ONE END BENT - TWO REQUIRED

BAR NO.	SIZE	TYP.	LENGTH	REMARKS
4	#4	SH	52'-4"	407
6	#11	S	33'-11"	151
12	#2	SH	32'-4"	22
14	#2	SH	50'-10"	52
15	#4	SH	18'-0"	20
16	#4	SH	2'-8"	11
17	#6	S	5'-2"	17

18	#6	#4	7'-0"	20
19	#6	#4	7'-11"	20
20	#4	SH	5'-10"	70

Reinforcing Steel - 201.000 LBS  
 Class A Concrete - 27.500 CU YD  
 Full Depth #1 - Absolute 5' max  
 End Bent #1 - No. 7 11' x 11' x 22'  
 End Bent #2 - No. 7 11' x 11' x 22'  
 Concrete displaced by pile heads has been deducted.

Notes:  
 1. Piles for this bent are No. 20 and No. 22 shall be driven to a minimum bearing capacity of 27 tons each.



PROJECT NO. R-13272

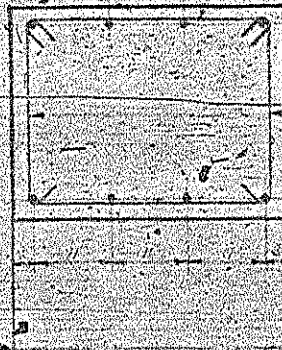
ROEFSON COUNTY

STATION: 12+12.5 (91272-1)

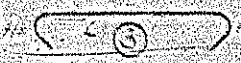
STATE OF NORTH CAROLINA  
**STATE HIGHWAY COMMISSION**  
 SUBSTRUCTURE  
 END BENTS No. 1 & 2



PLAN OF CAP

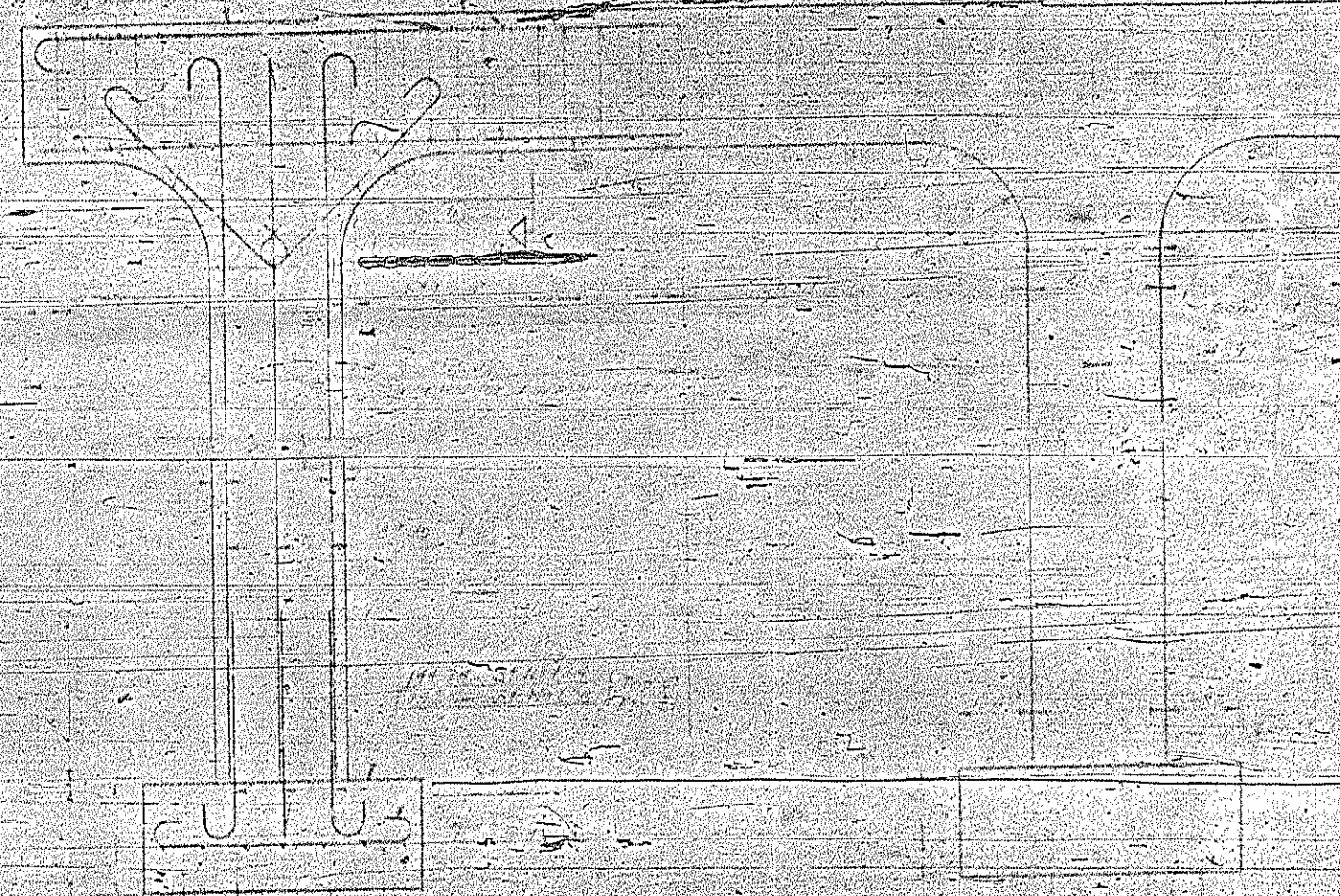


SECTION A-A



BAR TYPES  
ALL DIMENSIONS ARE OUT TO OUT

BAR SCHEDULE - ONE BENT					
BAR	NO.	SIZE	TYPE	LENGTH	WEIGHT
B	4	#10	STR.	11'-6"	118
B	4	#10	1	27'-0"	479
B	2	#5	1	5'-10"	73
M	16	#10	2	8'-7"	268
V	16	#10	2	26'-10"	876
T	4	#5	1	11'-0"	86
L	14	#5	1	11'-0"	86
S	35	#4	4	10'-0"	187
S	16	#3	5	5'-8"	59



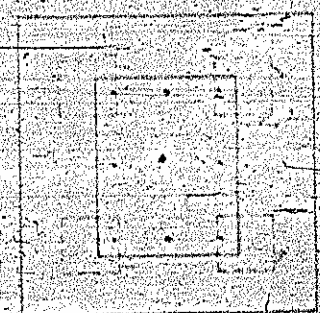
ELEVATION



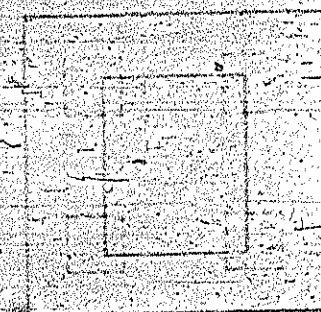
END ELEVATION

BILL OF MATERIAL FOR ONE BENT - FOUR PILES	
10' prestressed conc. pipe	3483
12' prestressed conc. pipe	4251
12' prestressed conc. pipe	4251
12' prestressed conc. pipe	4251

\* Concrete displaced by piles has been deducted



PLAN OF FOOTING



PROJECT NO. 813972

ROBESON COUNTY

STATION: L 122+99.8

VIA 9+277

STATE OF NORTH CAROLINA  
STATE HIGHWAY COMMISSION  
RALEIGH  
INTERIOR BENTS  
No. 123-4  
NOVEMBER 1955