
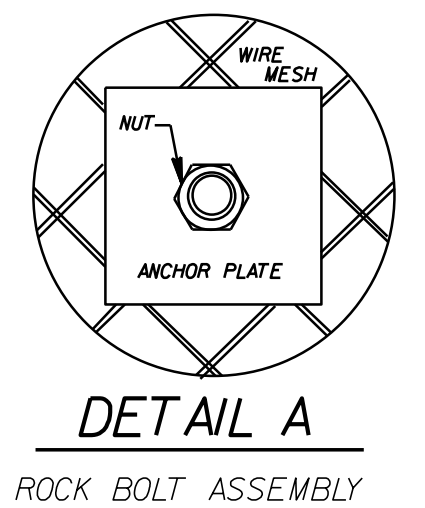
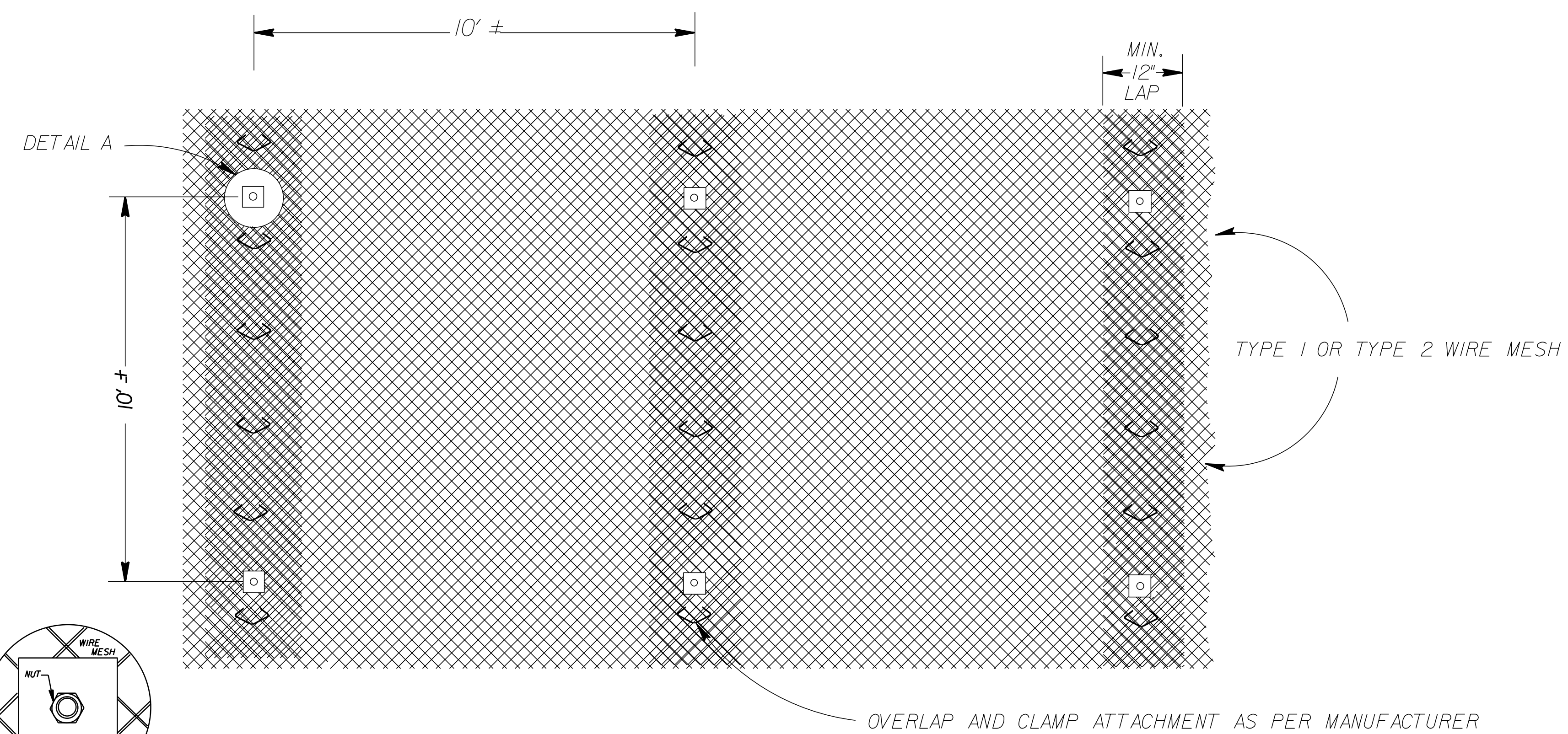
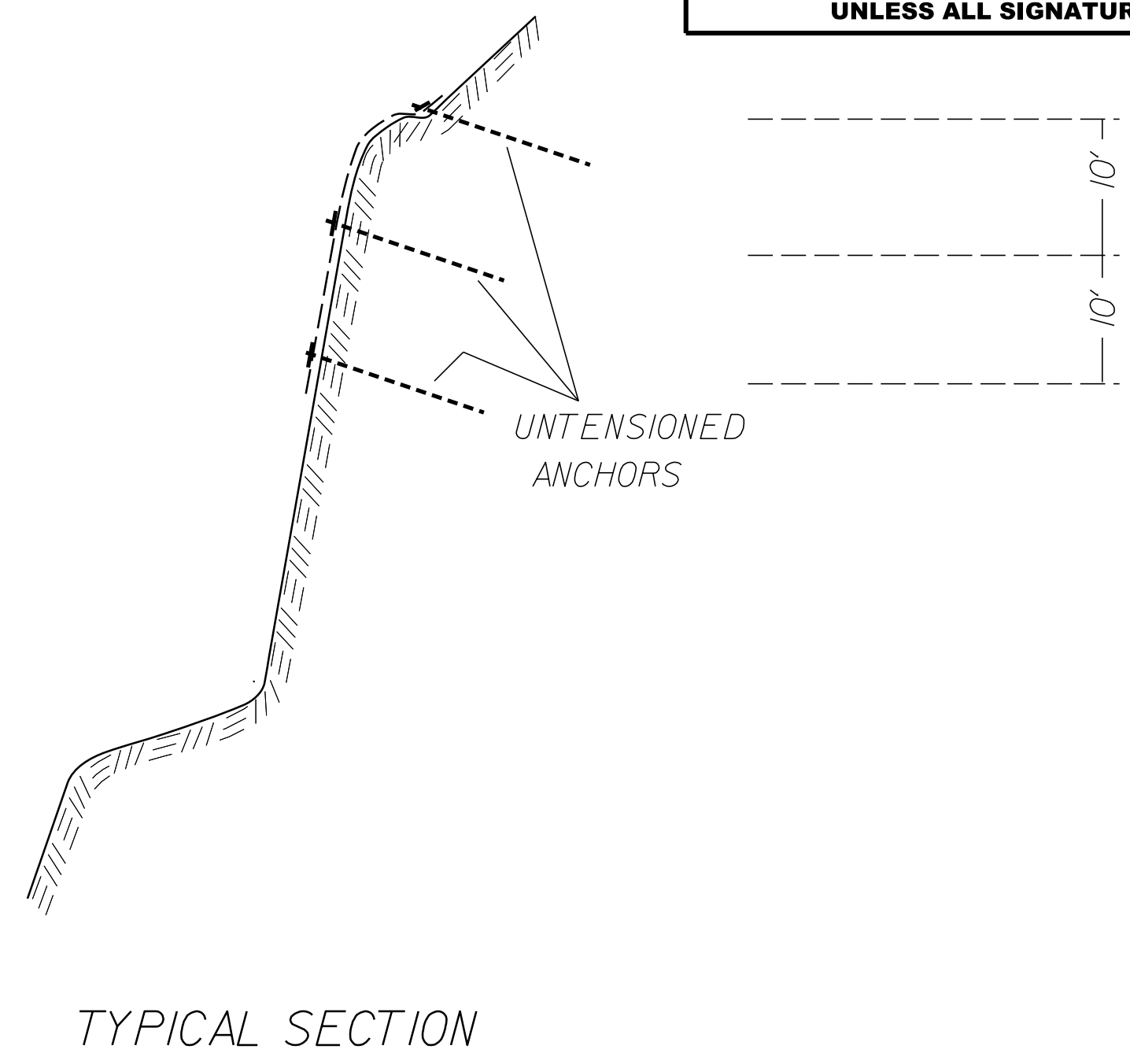


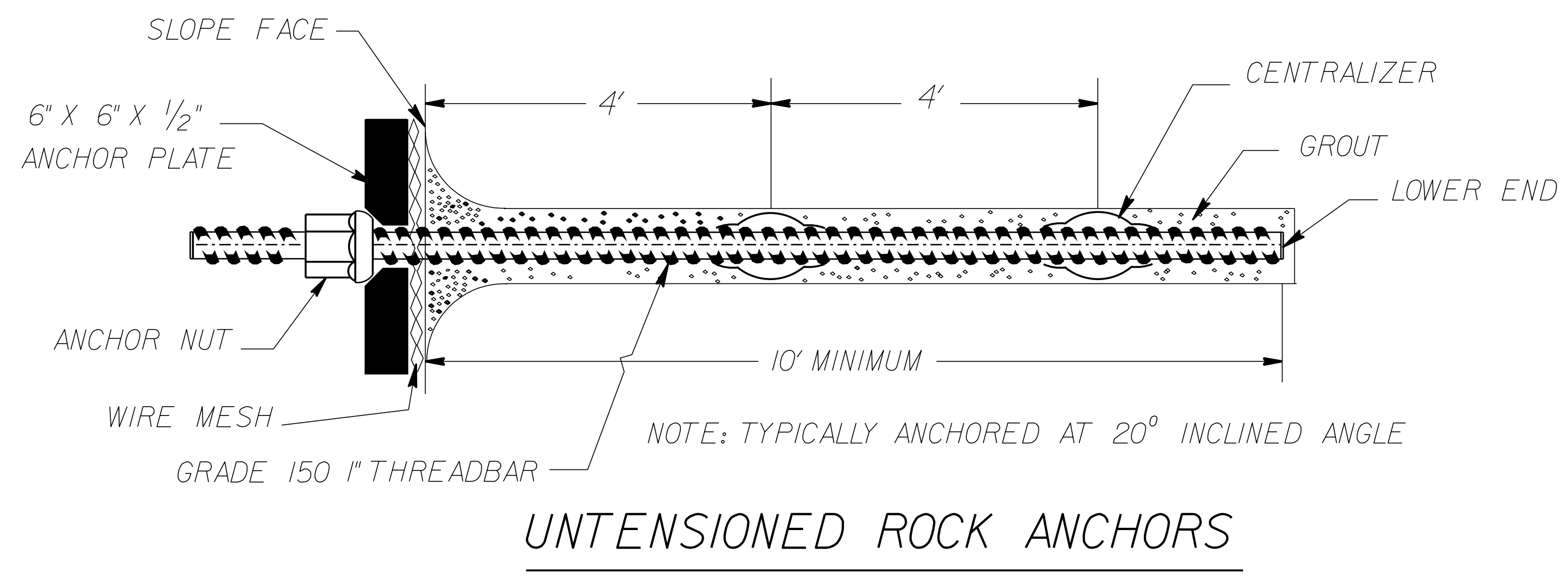
PROJECT REFERENCE NO. A-0009CB		SHEET NO. 2G-7	
GEOTECHNICAL ENGINEER  D. Matthew Brewer 38512920485188 SIGNATURE		ENGINEER DATE 7/14/22	
DOCUMENT NOT CONSIDERED FINAL UNLESS ALL SIGNATURES COMPLETED			



DETAIL OF WIRE MESH



TYPICAL SECTION



UNTENSIONED ROCK ANCHORS

NOTES:

- 1) WIRE MESH SHALL BE INSTALLED ON SLOPES AT LOCATIONS AS DIRECTED BY THE ENGINEER.

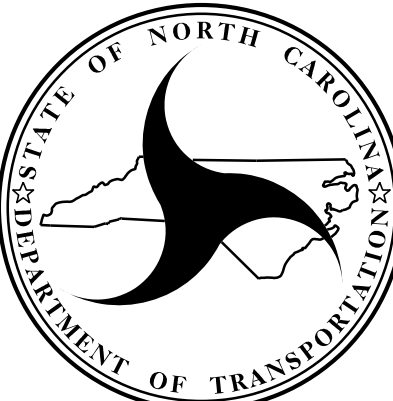
ESTIMATED QUANTITIES	
WIRE MESH (TYPE 1)	300 SY
WIRE MESH (TYPE 2)	300 SY
UNTENSIONED ROCK ANCHOR FOR WIRE MESH	1,250 LF

PREPARED BY: D. MATTHEW BREWER, P.E.	DATE: 7/14/22
REVIEWED BY: ROBERT E. KRAL, P.E.	DATE: 7/14/22

Prepared in the Office of:



CAROLINAS GEOTECHNICAL GROUP
 2400 CROWNPOINT EXECUTIVE DRIVE
 SUITE 800
 CHARLOTTE, NC 28227
 (980) 339-8684



NORTH CAROLINA DEPARTMENT OF TRANSPORTATION
 DIVISION OF HIGHWAYS
GEOTECHNICAL ENGINEERING UNIT

GEOTECHNICAL CONSTRUCTION DETAILS - ROCK SLOPE MATERIALS

REVISIONS					
NO.	BY	DATE	NO.	BY	DATE
1			3		
2			4		